

REVISIONS

SHEET INDEX	
SHEET No.	DESCRIPTION
1	TITLE SHEET
2	YOUNGTREE COURT & WINEGLASS COURT
3	SWANSFIELD ROAD
4	ROADWAY DETAILS
5	DRAINAGE AREA MAP
6	DRAINAGE PROFILES

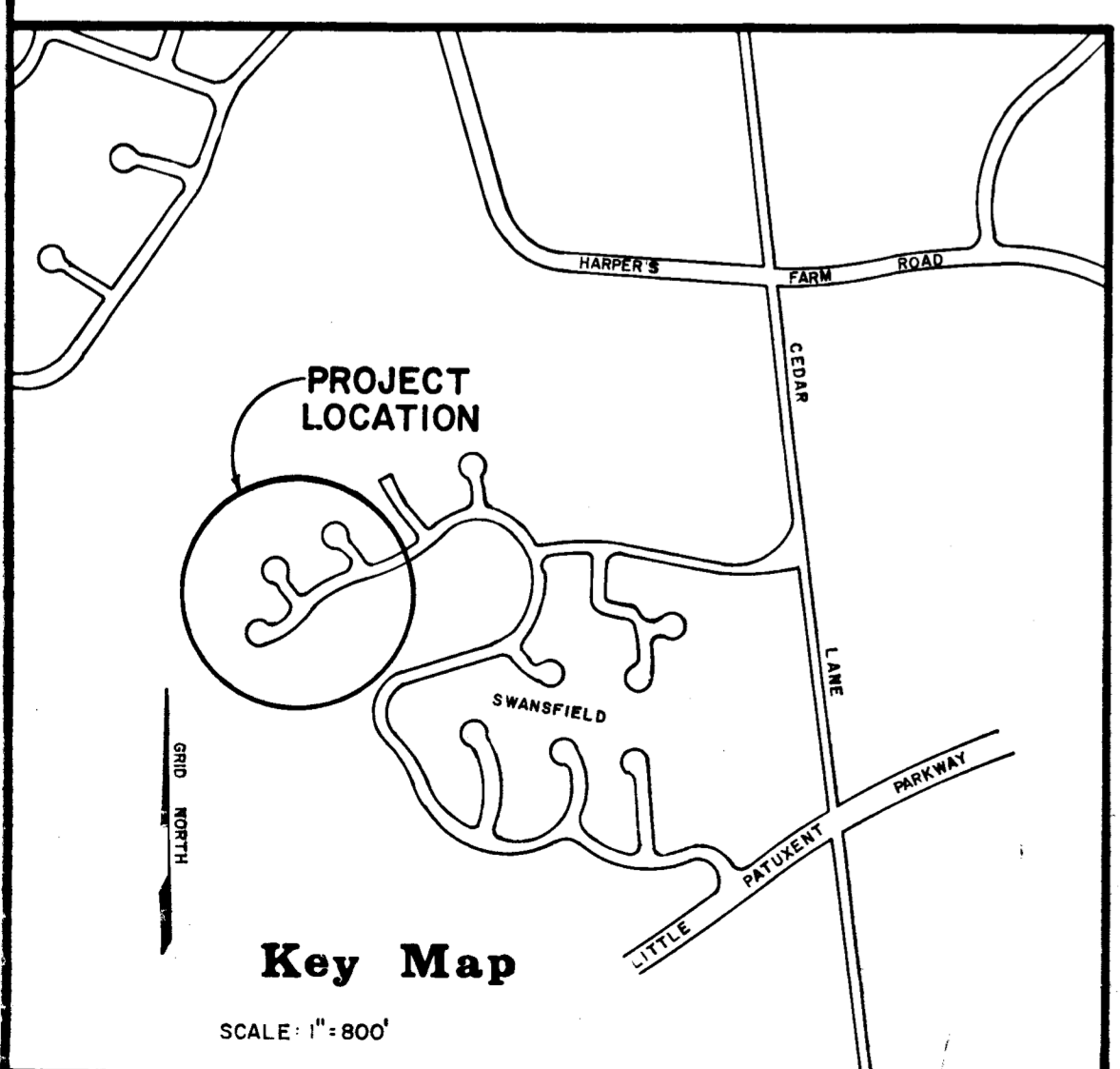
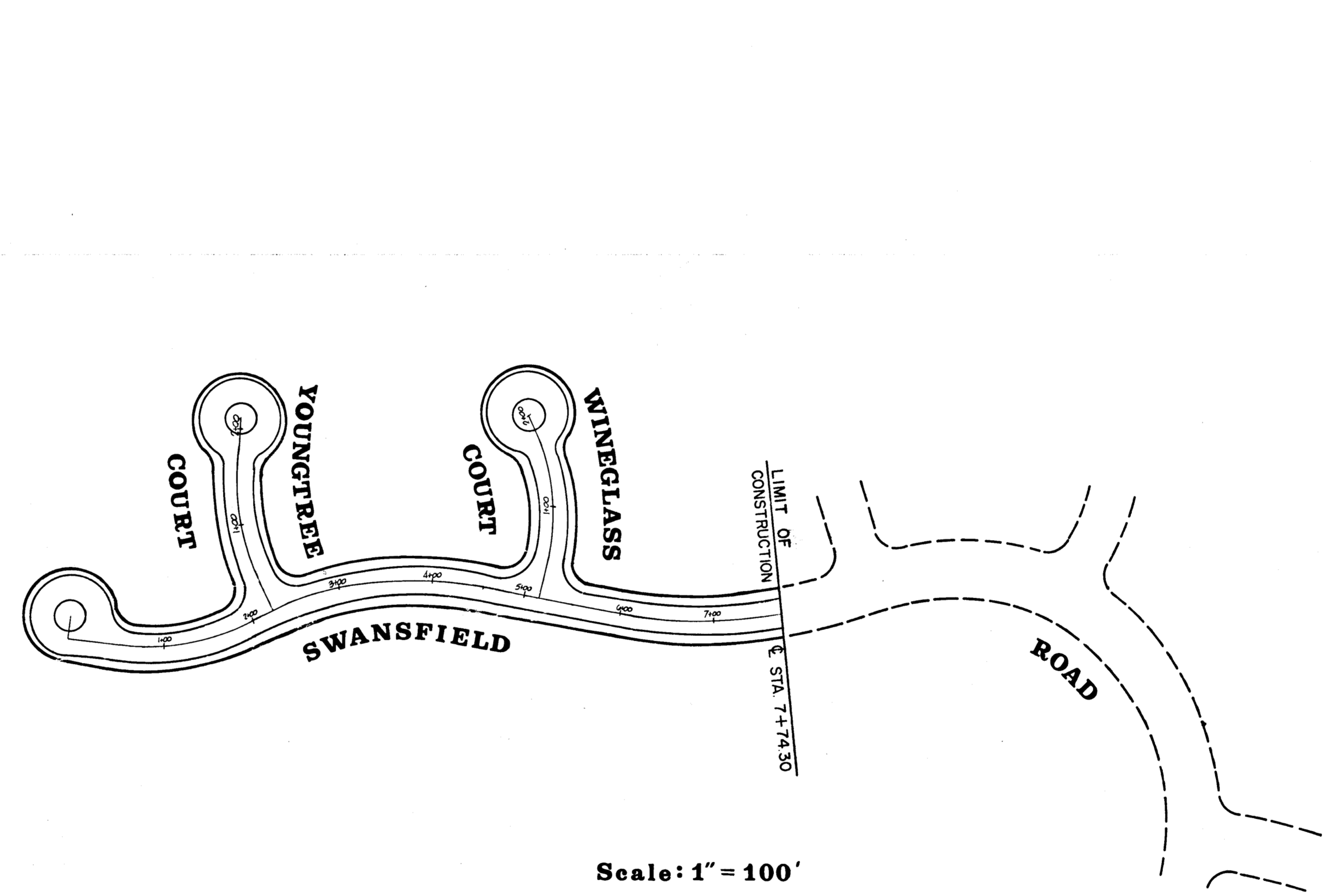
# COLUMBIA

HOWARD COUNTY, MARYLAND  
5th ELECTION DISTRICT

## VILLAGE OF HARPER'S CHOICE SEC. 4 SWANSFIELD AREA 3

**NOTES:**

- ALL DETAILS ARE FROM THE "ROAD CONSTRUCTION CODE AND STANDARD SPECIFICATIONS" ISSUED OR APPROVED BY HOWARD COUNTY.
- ALL ROADS ARE DESIGNED FOR 25 M.P.H. TRAFFIC SPEED IN ACCORDANCE WITH A.A.S.H.O.
- CONTRACTOR TO NOTIFY ALL UTILITY COMPANIES 48 HOURS PRIOR TO STARTING CONSTRUCTION.
- ALL FILL SLOPES AND CUT SLOPES IN THE EXCESS OF 4 VERTICAL FEET SHOULD BE BERMED WITH 18" HIGH DIVERSION BERMS TO HAVE POSITIVE GRADE TO TEMPORARILY CONSTRUCTED CHUTES. BERMS SHOULD BE SEEDED. THE BERMS CAN BE REPLACED WHEN THE STORM DRAINS ARE INSTALLED AND THE FILL AND CUT SLOPES HAVE BEEN SEEDED.
- ALL CONSTRUCTION WILL BE IN ACCORDANCE WITH THE HOWARD COUNTY ROAD CODE AND STANDARD SPECIFICATIONS.
- AREAS TO BE SEEDED WITHIN ROAD R/W'S SHALL USE A SEED MIXTURE AS FOLLOWS: ANNUAL RYE GRASS (20%), KENTUCKY BLUE GRASS (20%) AND KENTUCKY 31" FESCUE (60%) AT THE RATE OF 200#/A. SOW WITH MECHANICAL SPREADER, RAKE, MINIMUM OF TWO (2) PASSES WITH "NOZK RAKE", COVER AND COMPACT WITH CULTIPACKER. SURFACE PREPARATION TO INCLUDE GROUND LIMESTONE OVER TOPSOIL SURFACE AREA AT THE RATE OF 1 1/4 T/A (60#/1000#) COMMERCIAL FERTILIZER (5-10-10) AT THE RATE OF 3/4 T/A (35#/1000#) AND SUPERPHOSPHATE AT THE RATE OF 600#/A (15#/1000#)



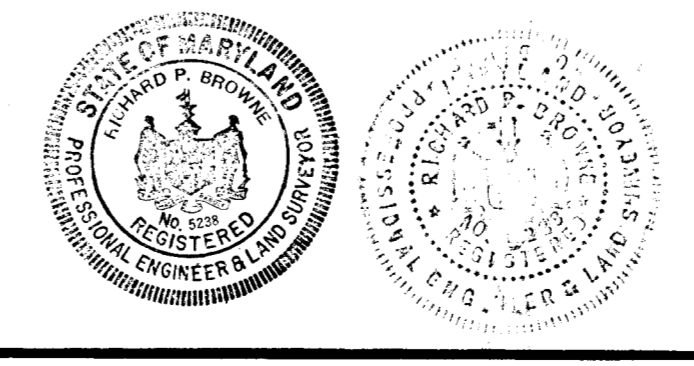
**OWNER & DEVELOPER**  
THE HOWARD RESEARCH AND DEVELOPMENT CORP.  
THE VILLAGE OF CROSS KEYS  
BALTIMORE, MARYLAND

Certification by the Professional Engineer:  
"I certify that the plan of development and the plan for control of silt and erosion meets the requirements, standards, and specifications of the Howard Soil Conservation District."  
Richard P. Browne 8-19-69  
(Signature) P.E. & L.S. # 5238 (Date)

Certification by the developer:  
"I certify that all development and/or construction will be done according to this plan of development and plan of silt and sediment control."  
The Howard Research & Development Corporation  
By: Thomas A. Garland, Agent 8-19-69  
(Signature) (Date)

Signature block for approval by the Howard Soil Conservation District:

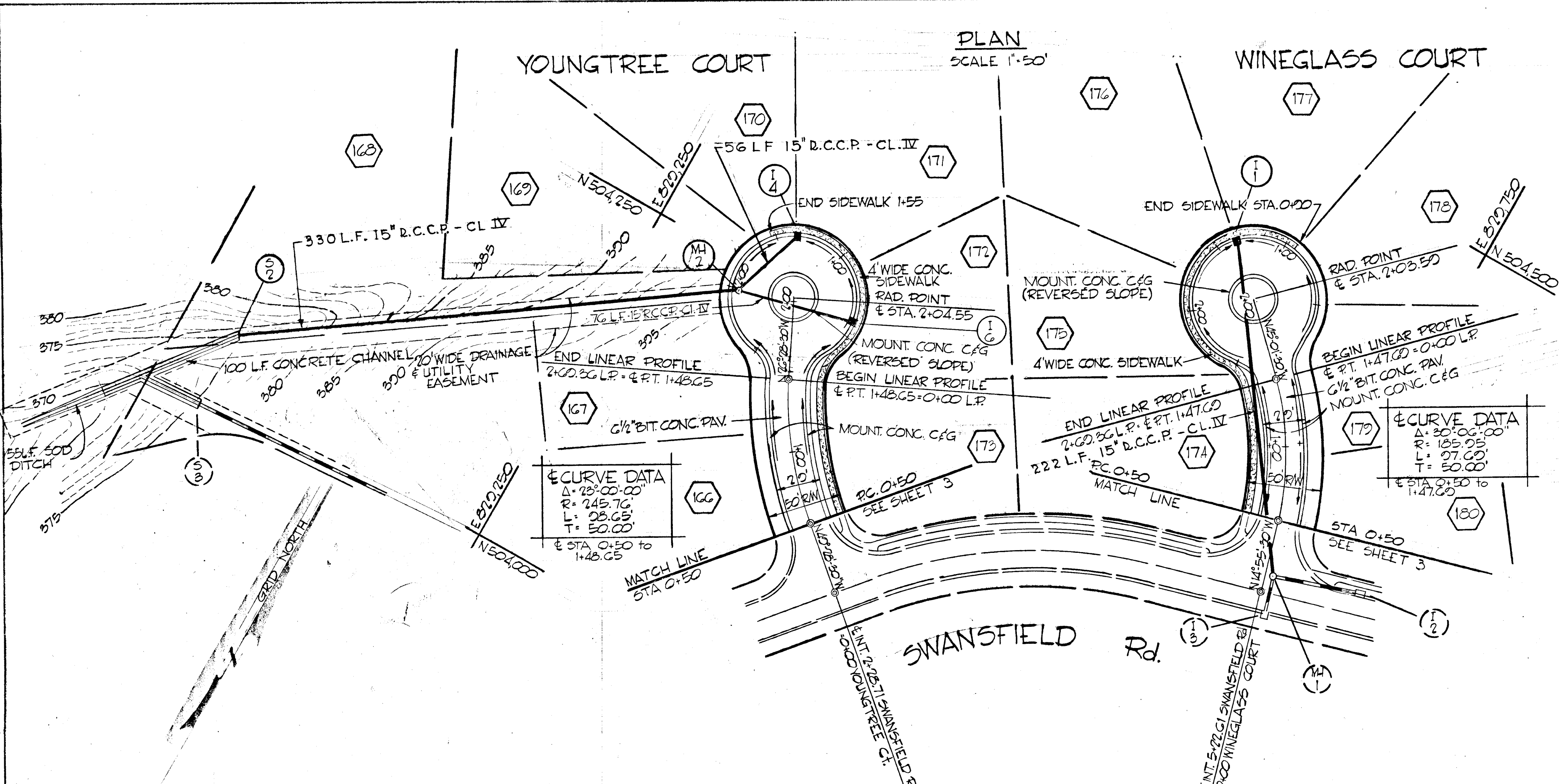
"This development plan is approved for soil erosion and sediment control by the Howard Soil Conservation District."  
Reviewed: Colonel J. Sauer 8/13/69  
Dist. Conservationist (Date)  
Approved: Robert V. Young 8/13/69  
Howard S.C.D. (Date)



RICHARD P. BROWNE ASSOCIATES  
CONSULTING ENGINEERS-PLANNERS  
COLUMBIA, MARYLAND  
Richard P. Browne PE & L.S. DATE  
LIC. NO. 5238 STATE MD.

DEPARTMENT OF PUBLIC WORKS  
D. M. McKeown 8-18-69  
CHIEF, BUREAU OF HIGHWAY DATE  
OFFICE OF PLANNING AND ZONING  
J. H. Clawson 8-22-69  
CHIEF ENGINEER, DIVISION OF LAND DEVELOPMENT DATE

PLAN  
 CHECKED BY: [Signature]  
 DATE: [Date]  
 NO. OF SHEETS: [Number]  
 SHEET NO.: [Number]



NO.	TYPE	LOCATION	INV. IN	INV. OUT	C.C.F. LEV.	REMARKS
I-1	COMB. 'S' INLET (SINGLE GRATE) & INLET	LP Sta. 1+34.68		410.16	423.30	SEE DETAIL SHEET
I-4	COMB. 'S' INLET (SINGLE GRATE) & INLET	LP Sta. 1+24.68		305.50	309.00	SEE DETAIL SHEET
I-6	COMB. 'S' INLET (SINGLE GRATE) & INLET	LP Sta. 0+50		306.76	401.28	SEE DETAIL SHEET
MH-2	Std. MANHOLE	N-504,235.36 E-822,317.92	304.88	306.00		Ho.Co Std. Dwg. D-108 Pg. 158
E-2	TYPE 'C' ENDWALL	SEE PLAN		371.64		Ho.Co Std. Dwg. D-57 Pg. 107

**APPROVED**  
 DIVISION OF  
 LAND DEVELOPMENT  
 OFFICE OF  
 PLANNING AND ZONING  
 OF HOWARD COUNTY  
 DATE: AUG 22 1969

*Richard P. Browne*  
 RICHARD P. BROWNE P.E. & L.S. #5238

CONSULTING ENGINEERS, PLANNERS  
 COLUMBIA MARYLAND  
 MAY 29, 68 2 CHANGED PIPE LABELING IN PLAN.  
 MAR 21, 69 1 CHANGE INLETS TO COMB 'S'  
 DATE: [ ] REV. NO. [ ] REVISION DESCRIPTION: [ ]

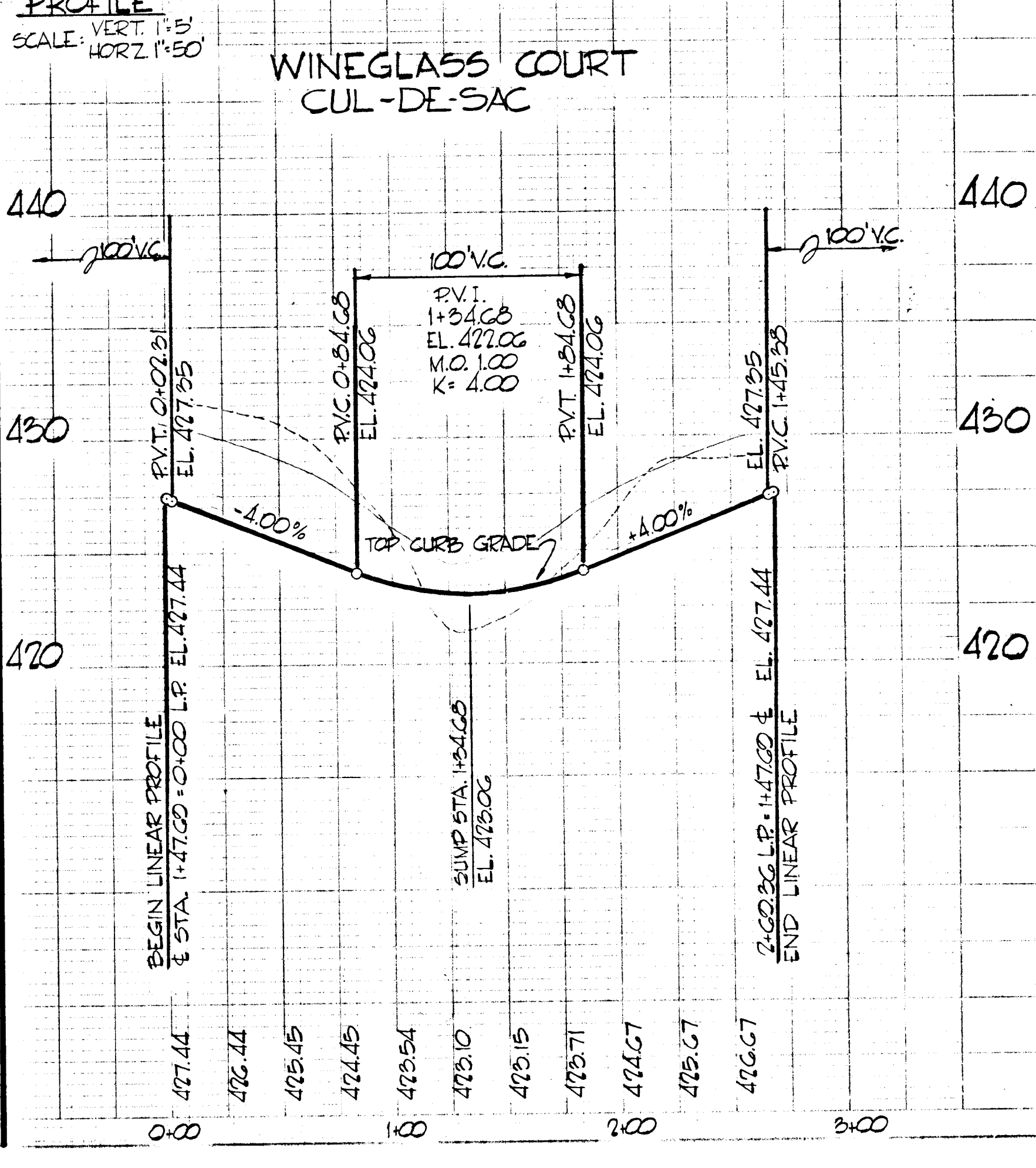
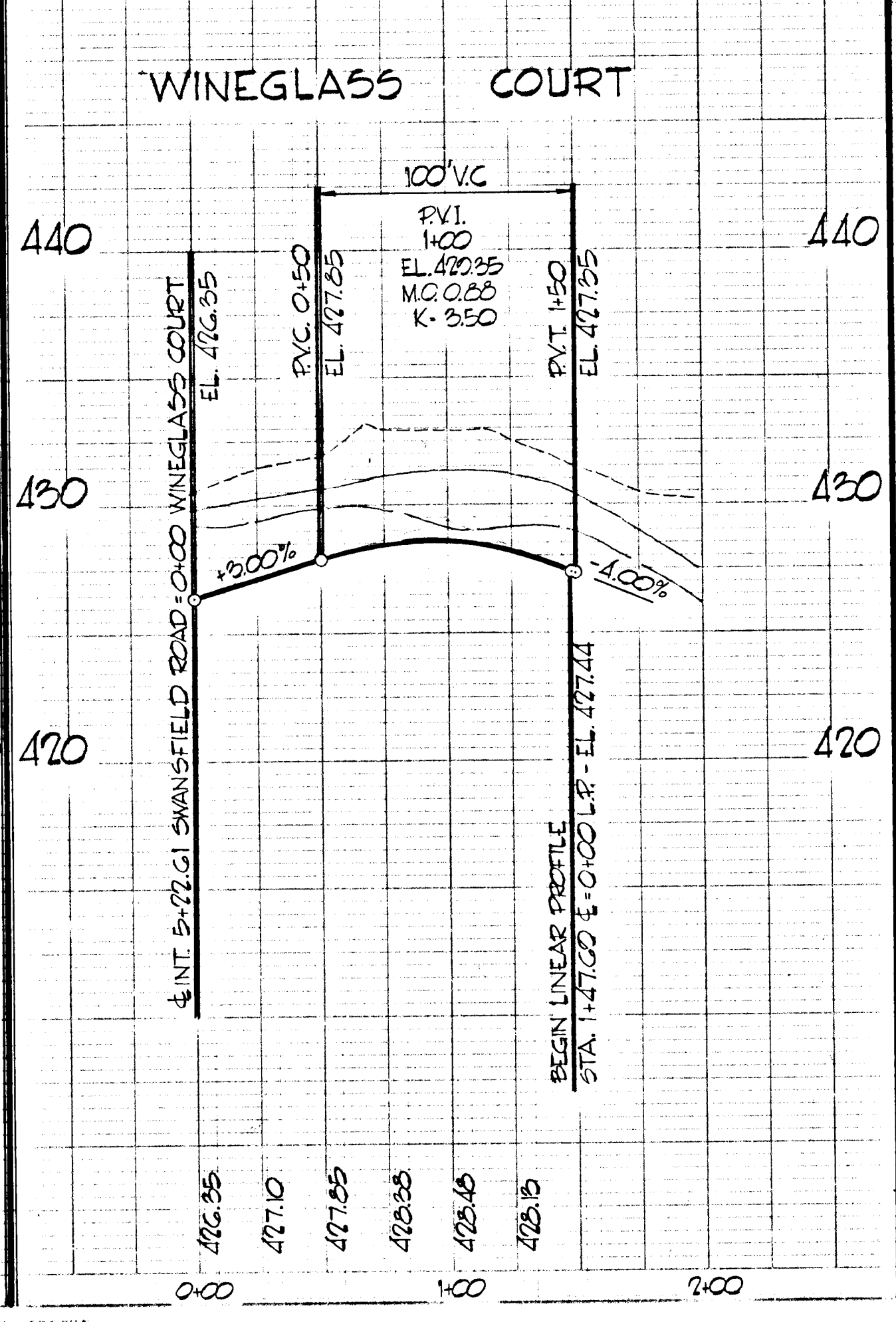
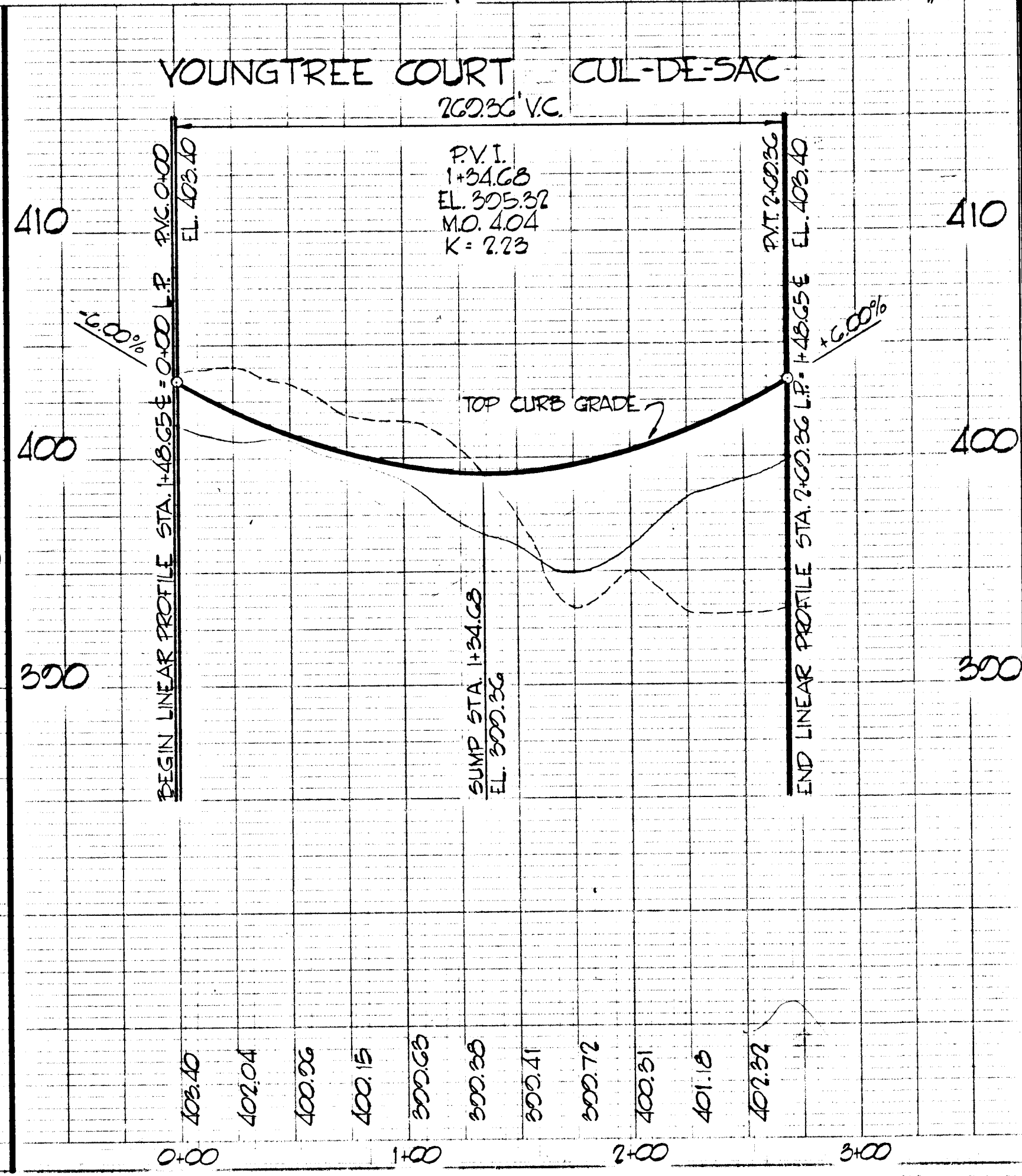
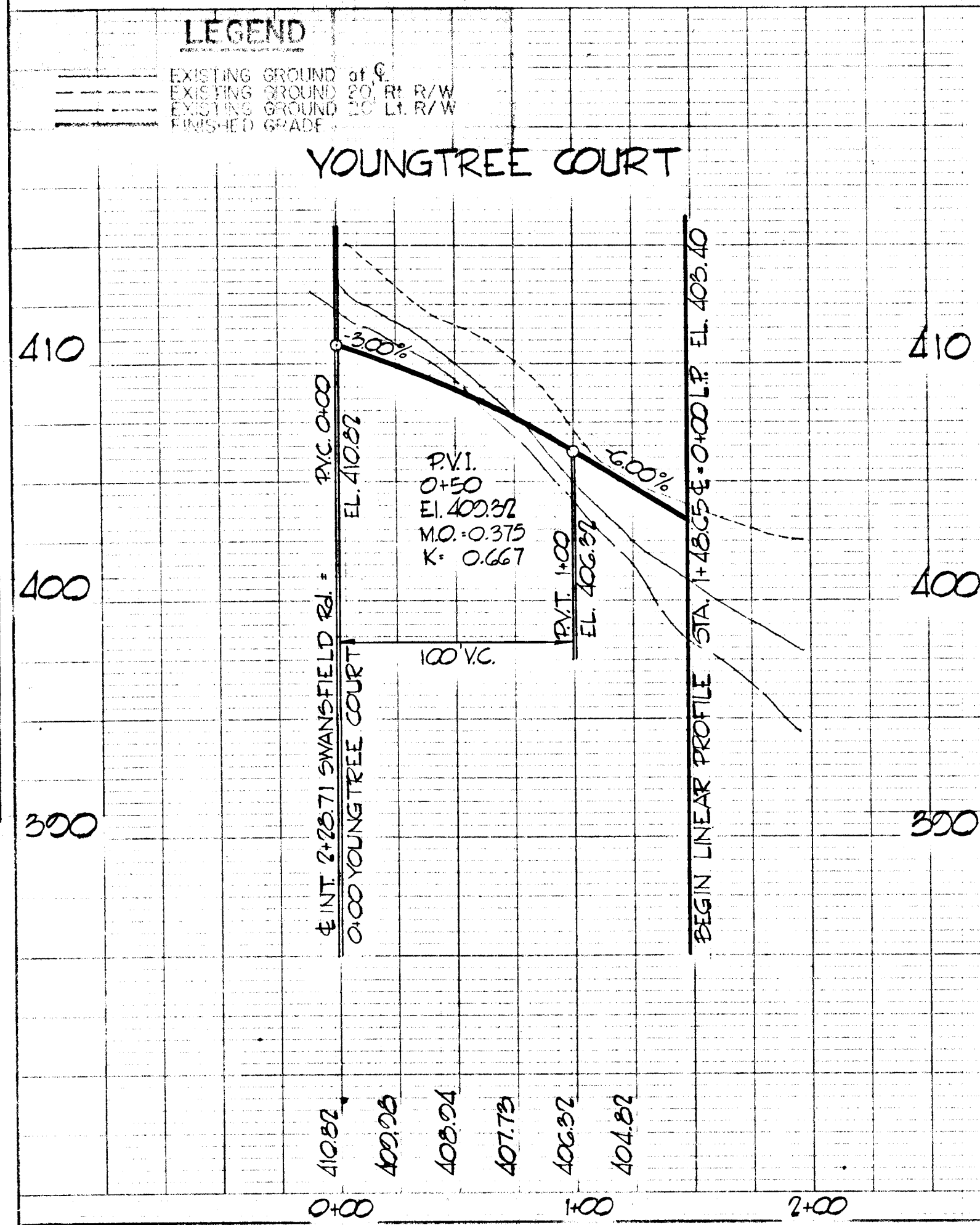
**COLUMBIA**  
 5<sup>TH</sup> ELECTION DISTRICT  
 HOWARD COUNTY, MARYLAND

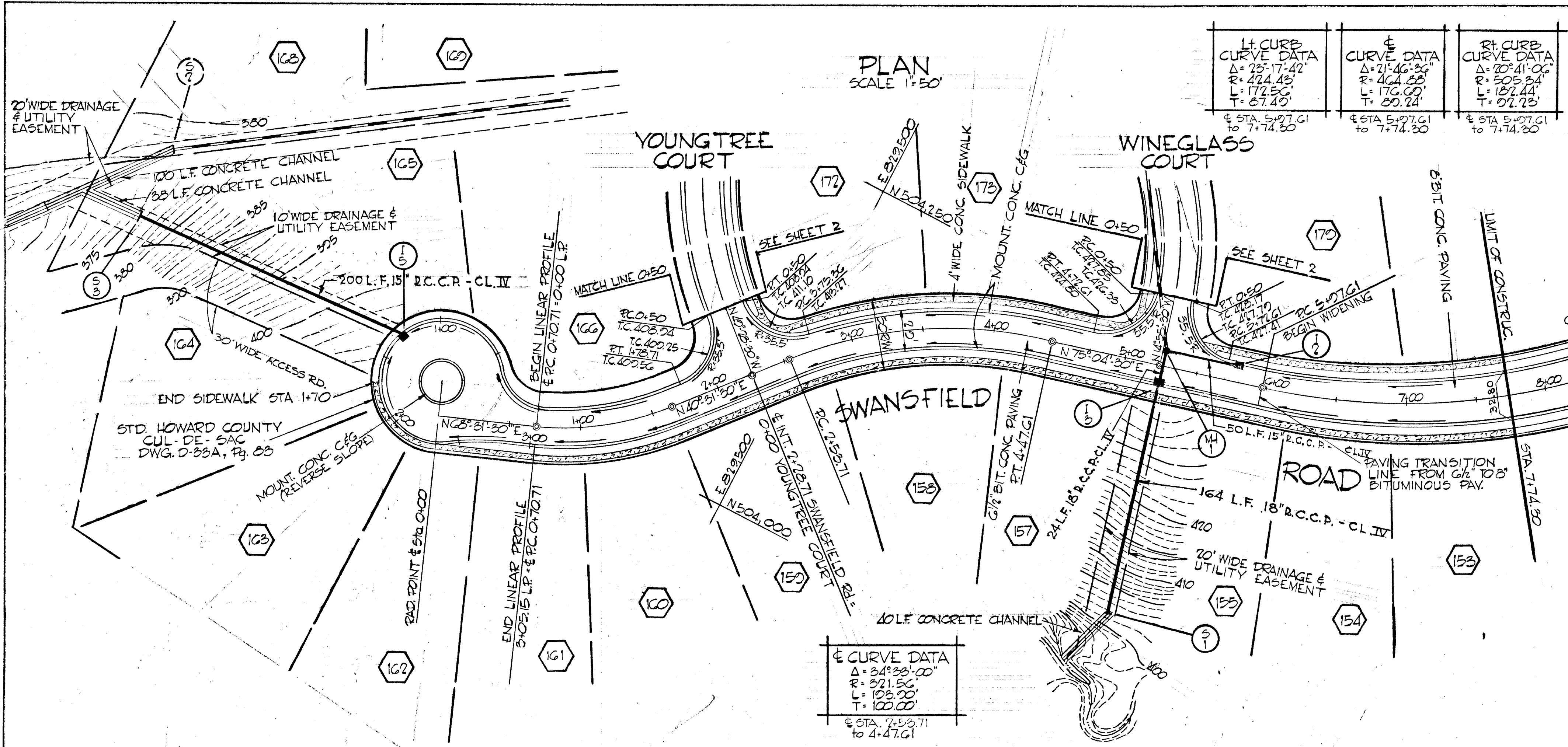
HOWARD RESEARCH AND DEVELOPMENT CORP.  
 THE VILLAGE OF CRANE WAYS - BALTIMORE, MARYLAND 21210  
 VILLAGE OF HARPER'S CHOICE  
 SECTION 4 SWANSFIELD AREA 3

PLAN & PROFILE  
 YOUNGTREE Ct. & WINEGLASS Ct.

By: T.S. Scale: AS SHOWN Eng. No. 7 of 9  
 By: F.T. Date: FEB 26, 1969 C.C.F. No.  
 By: T.S. Approved: [Signature]

**NOTE**  
 THE CUL-DE-SACS SHOWN ON THIS SHEET  
 CONFORM TO THE HOWARD COUNTY STD.  
 DWG. D-38A, PAGE 28





**STORM DRAINAGE STRUCTURE SCHEDULE**

NO.	TYPE	LOCATION	INV. IN	INV. OUT	I.C.P. ELEV.	REMARKS
I-2	COMB. 'S' INLET (SINGLE GRATE)	Sta. 5+28.75 L.F. & INLET	473.00	472.35	472.35	SEE DETAIL SHEET
II-1	Std. MANHOLE	Sta. 5+27.61-10' L.F. & INLET	417.83 472.50	417.03	472.47	Ho. Co. Std. Dwg. D-103 Pg. 128
I-3	COMB. 'S' INLET (SINGLE GRATE)	Sta. 5+27.61 R.F. & INLET	417.30	417.10	472.04	SEE DETAIL SHEET
5-1	Std. 'C' ENDWALL	Sta. 5+27.61-17.5 R.F. & INLET		397.84		Ho. Co. Std. Dwg. D-52 Pg. 107
I-5	COMB. 'S' INLET (SINGLE GRATE)	L.P. Sta. 1+30.43 & INLET	400.00	407.25		SEE DETAIL SHEET
5-3	Std. 'C' ENDWALL	SEE PLAN		371.70		Ho. Co. Std. Dwg. D-52 Pg. 107

**Richard P. Browne**  
 CONSULTING ENGINEERS - PLANNERS  
 COLUMBIA, MARYLAND

RE. # L.S. #5233

**APPROVED**  
 DIVISION OF  
 LAND DEVELOPMENT  
 OFFICE OF  
 PLANNING AND ZONING  
 OF HOWARD COUNTY  
 DATE: AUG 22 1969

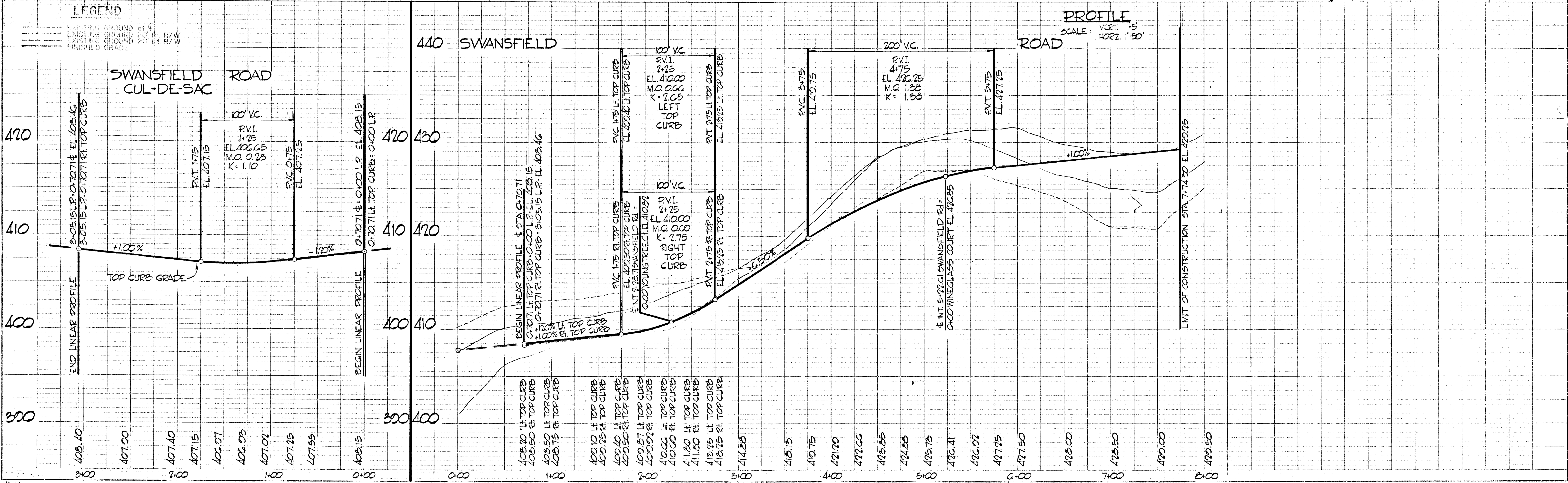
**COLUMBIA**  
 5<sup>th</sup> ELECTION DISTRICT  
 HOWARD COUNTY, MARYLAND

HOWARD RESEARCH AND DEVELOPMENT CORP.  
 THE VILLAGE OF CROSS KEYS - BALTIMORE, MARYLAND 21210

SECTION 4 SWANSFIELD AREA 3

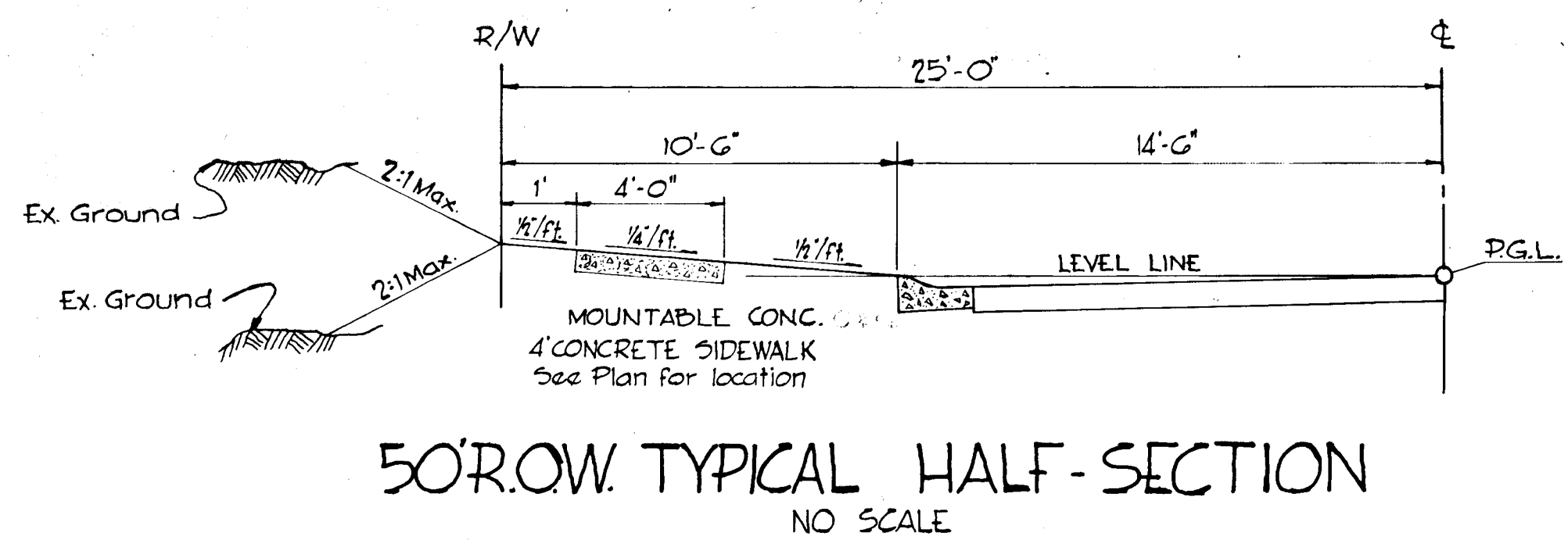
PLAN & PROFILE  
 SWANSFIELD ROAD

Des. By: T.S. Scale: AS SHOWN Dwg. No. 3 of 6  
 Dra. By: F.T. Date: FEB 26, 1969 C.C.F. No.  
 Chk. By: T.S. Approved

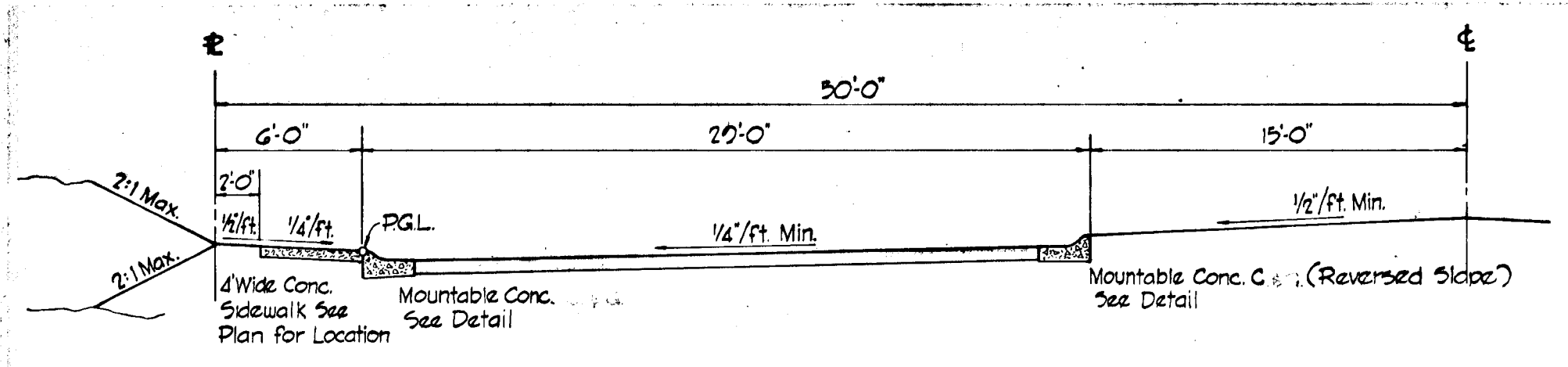


**PLAN**  
 DRAWN: [ ]  
 CHECKED: [ ]  
 DATE: [ ]

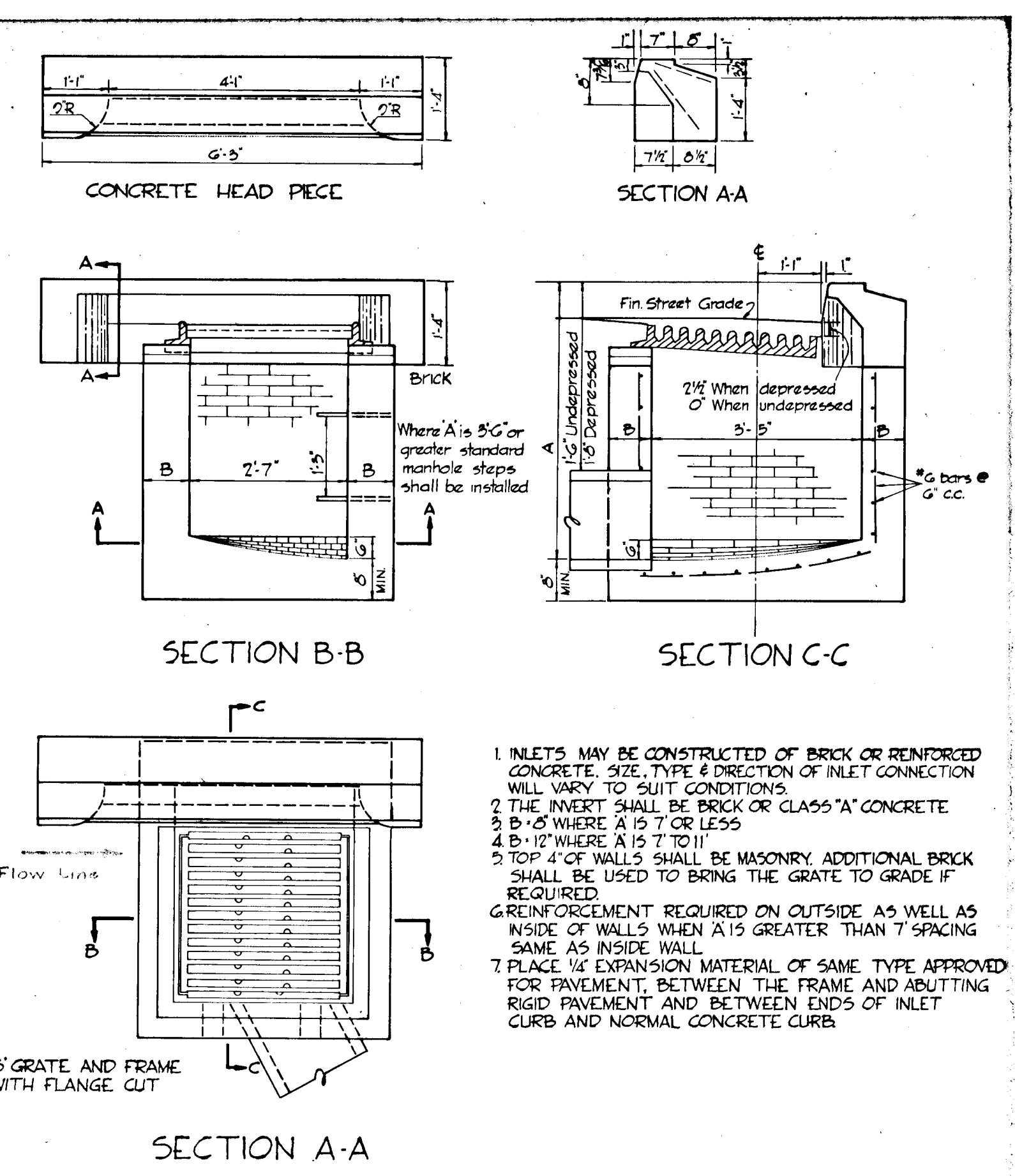
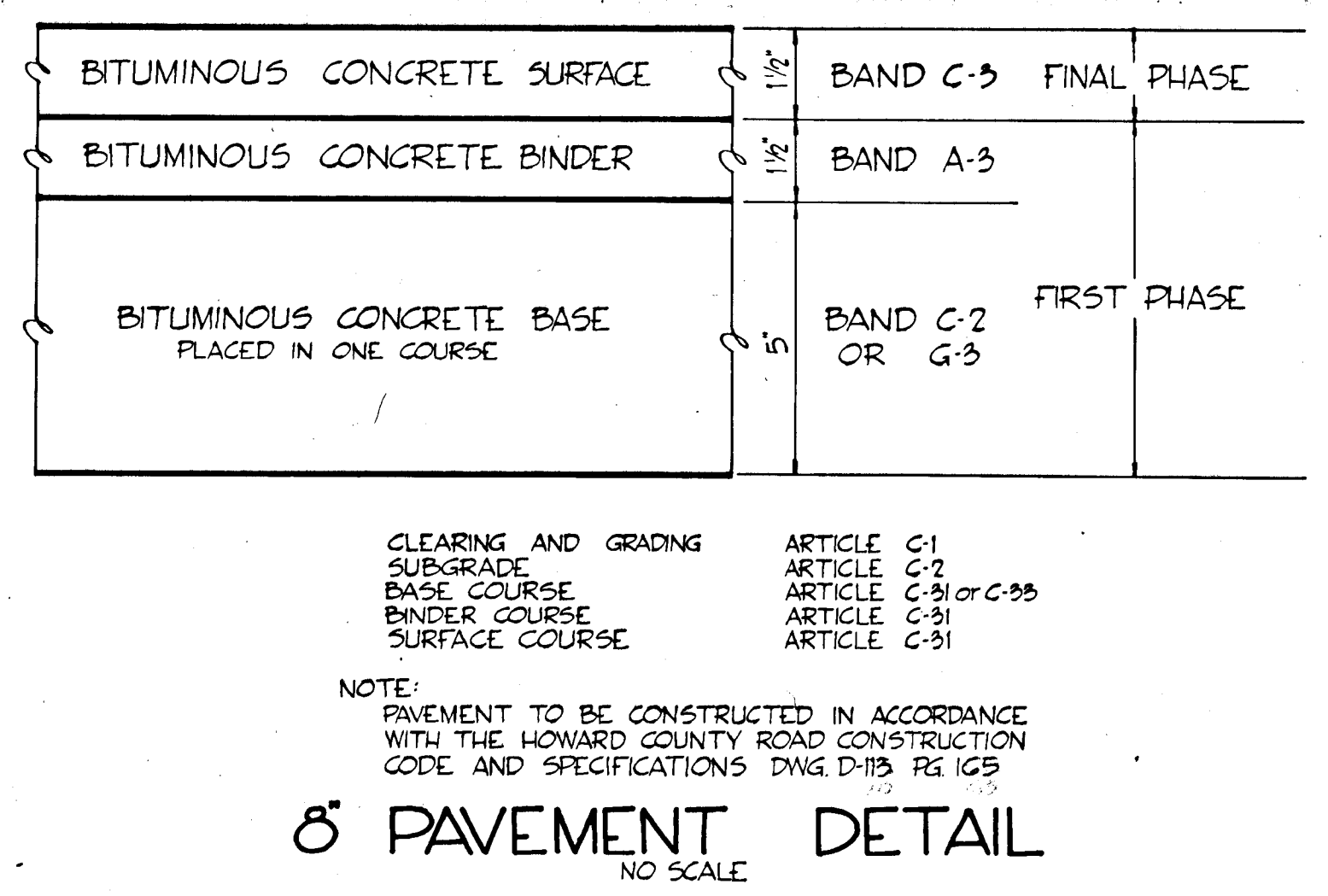
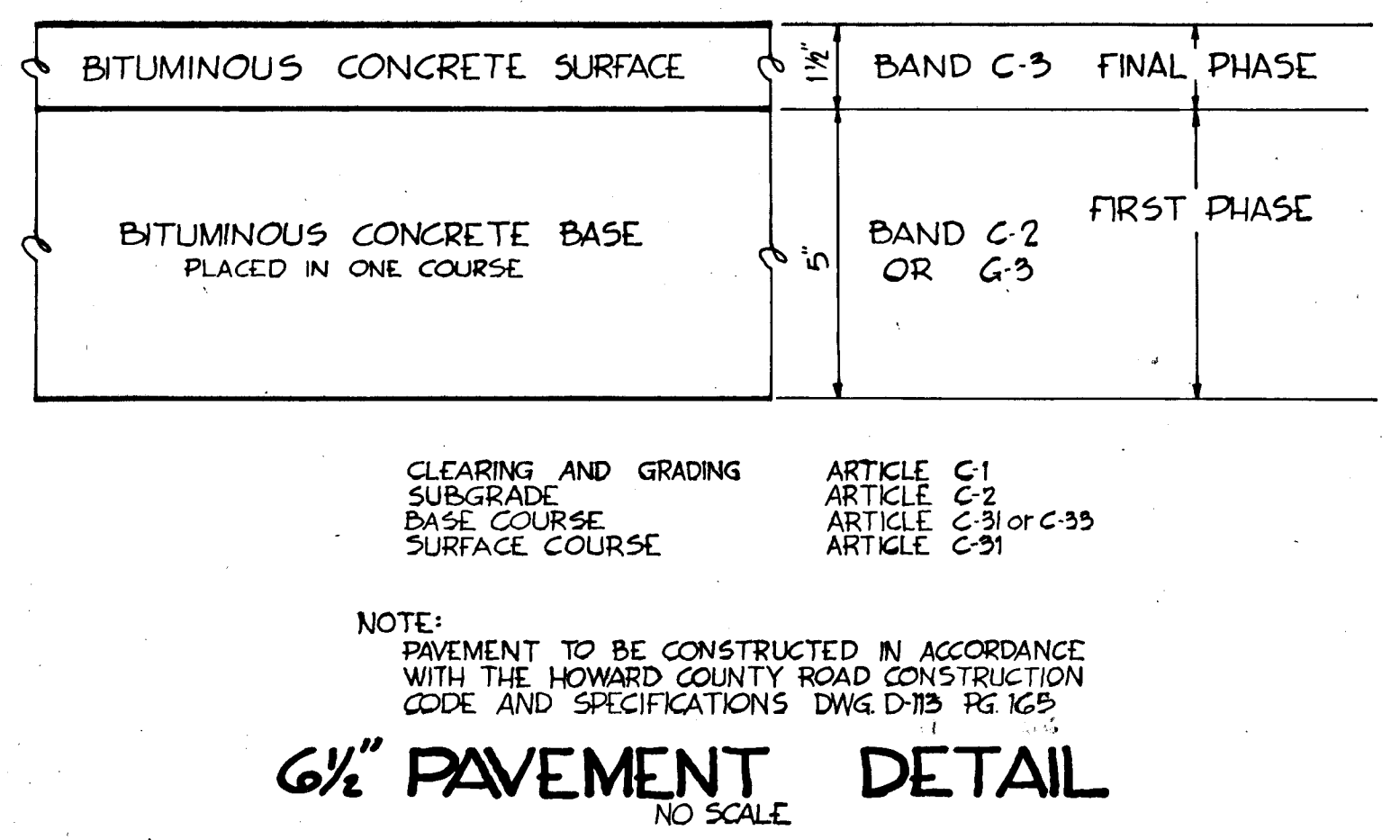
**PROFILE**  
 DRAWN: [ ]  
 CHECKED: [ ]  
 DATE: [ ]



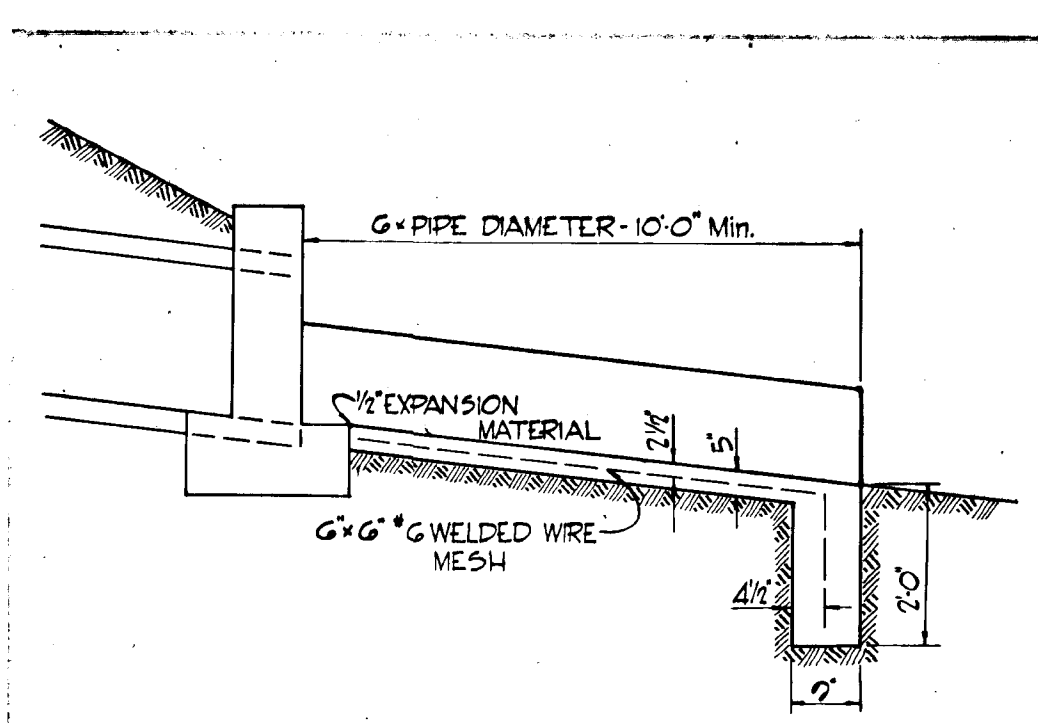
50' R.O.W. TYPICAL HALF-SECTION  
NO SCALE



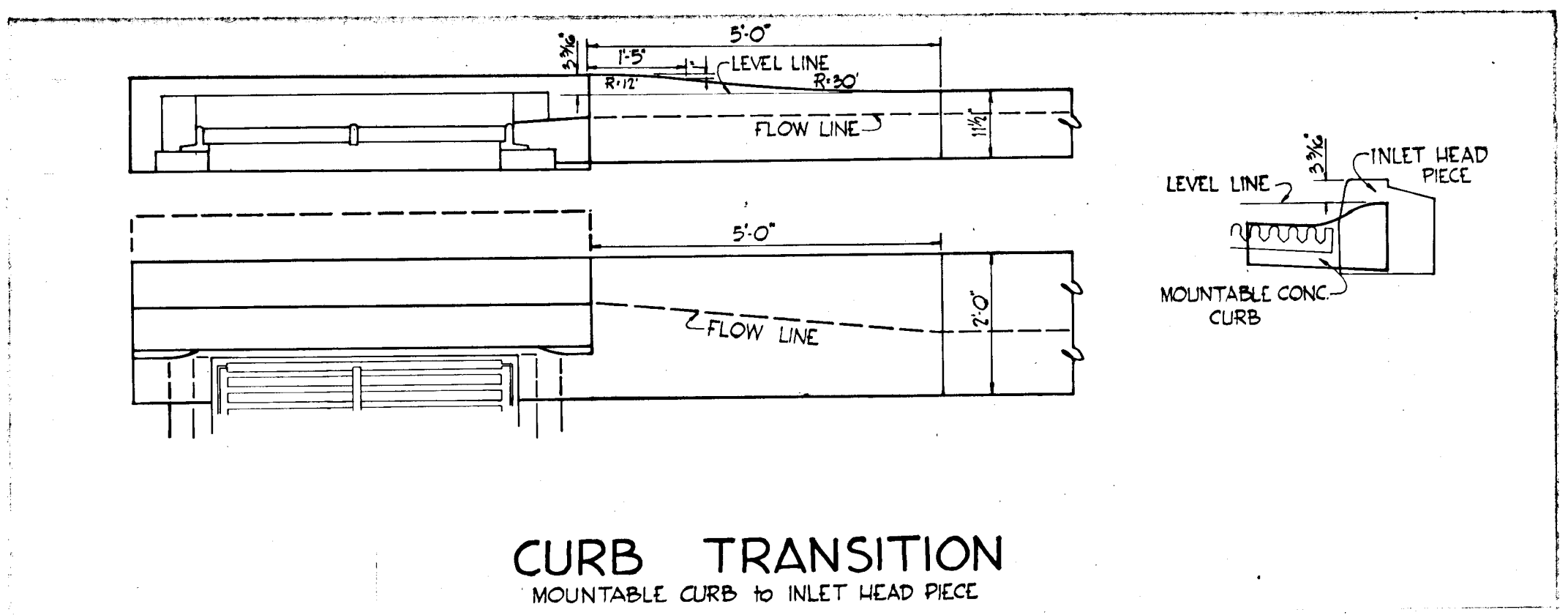
TYPICAL CUL-DE-SAC HALF-SECTION  
NO SCALE



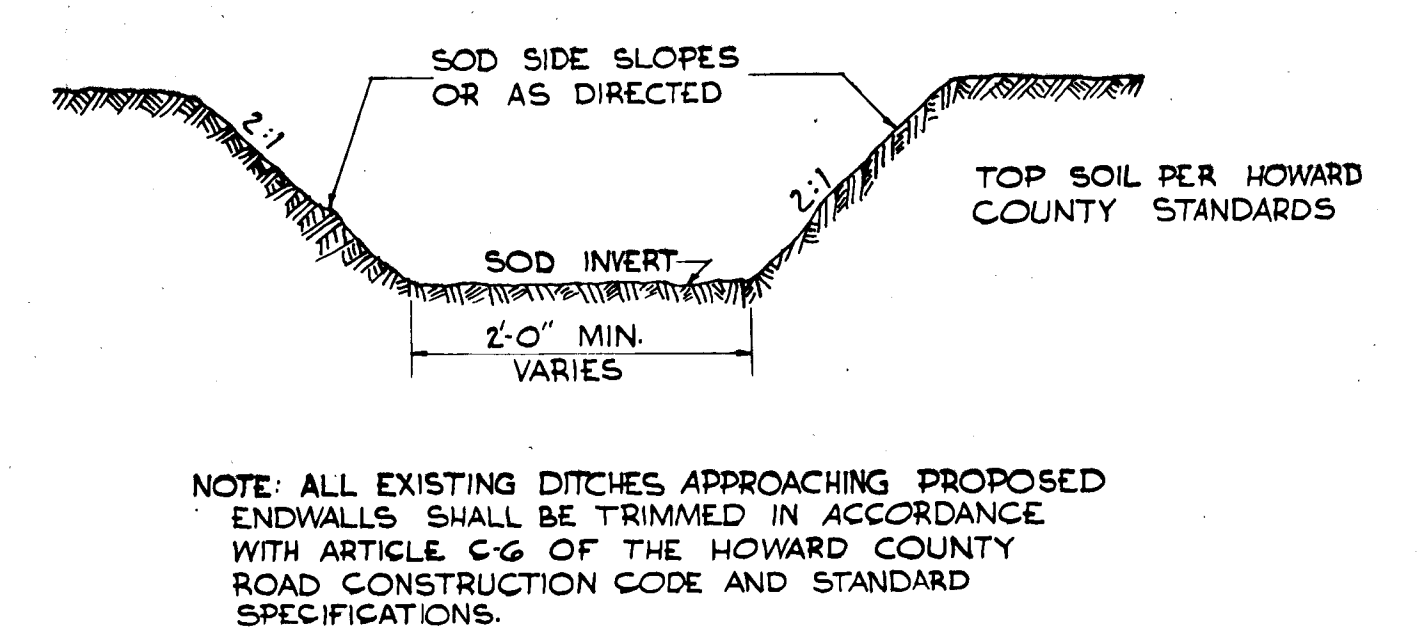
MODIFIED 'S' COMBINATION INLET  
NO SCALE



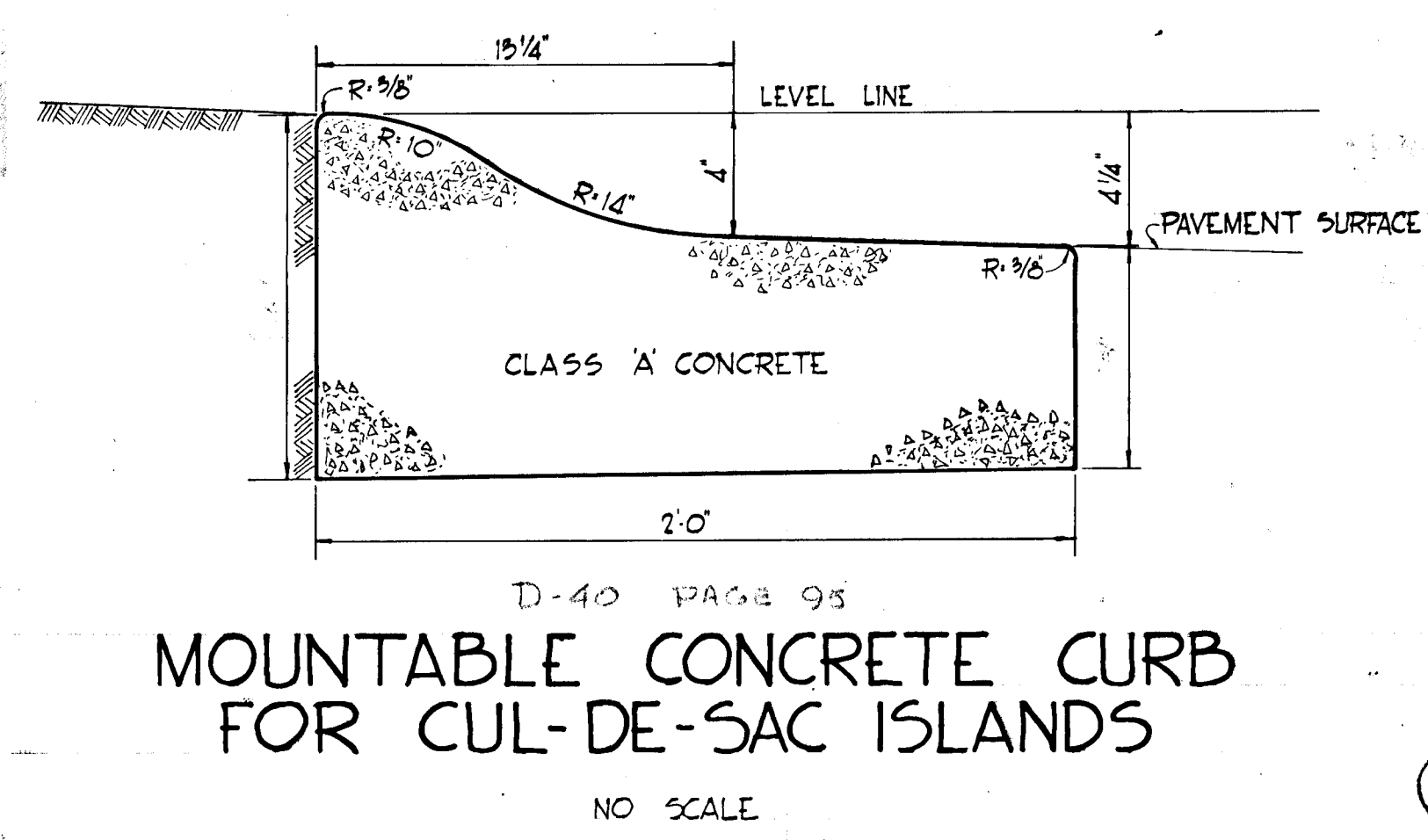
TYPICAL CONCRETE CHANNEL  
AND  
CUTOFF WALL  
NO SCALE



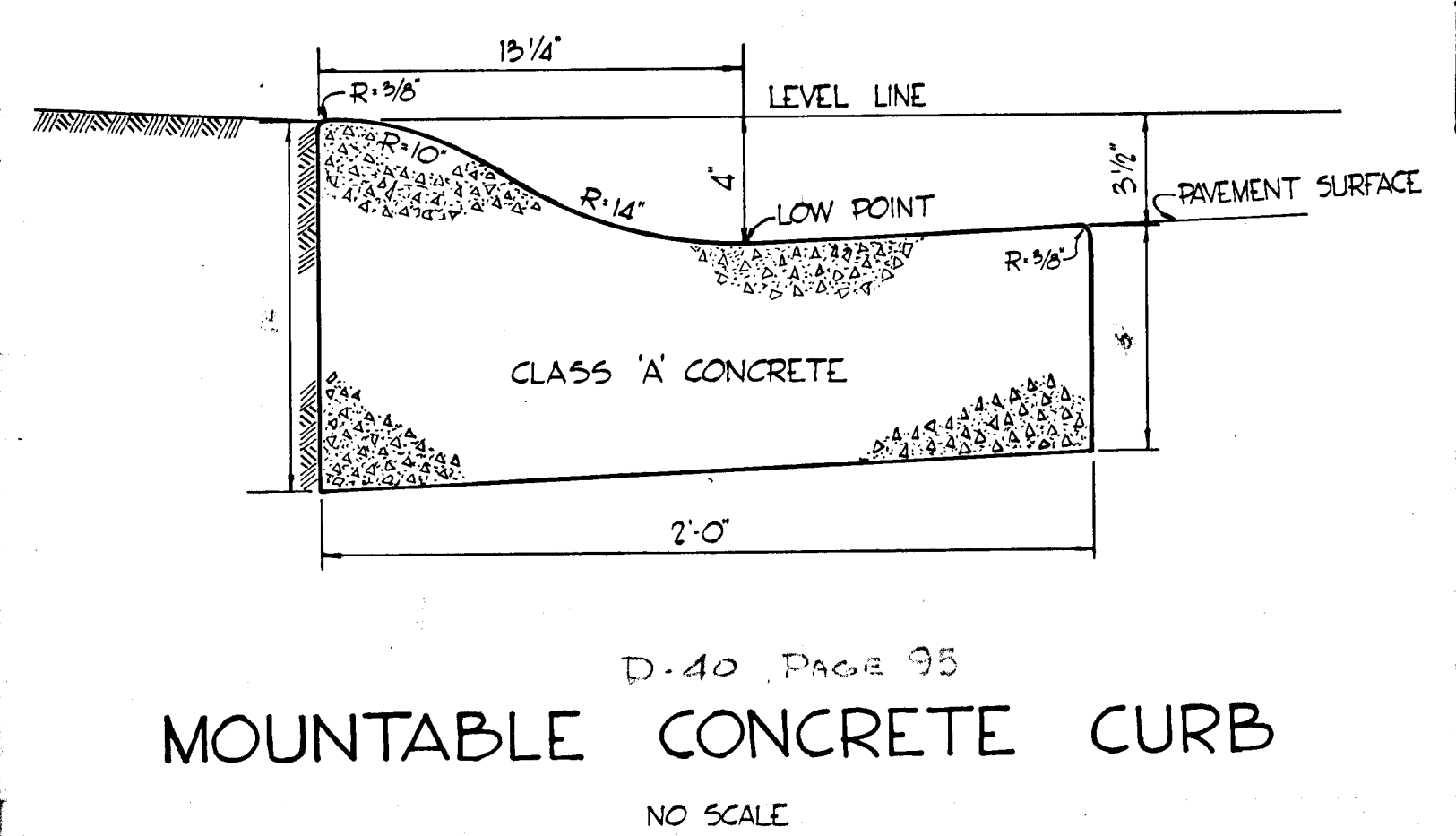
CURB TRANSITION  
MOUNTABLE CURB TO INLET HEAD PIECE



TYPICAL DRAINAGE DITCH  
NO SCALE



MOUNTABLE CONCRETE CURB  
FOR CUL-DE-SAC ISLANDS  
NO SCALE



MOUNTABLE CONCRETE CURB  
NO SCALE

APPROVED  
DIVISION OF  
LAND DEVELOPMENT  
OFFICE OF  
PLANNING AND ZONING  
OF HOWARD COUNTY  
DATE: AUG 22 1989

*Richard P. Browne*  
RICHARD P. BROWNE P.E. & L.C. #5280

RICHARD P. BROWNE ASSOCIATES  
CONSULTING ENGINEERS - PLANNERS  
COLUMBIA, MARYLAND

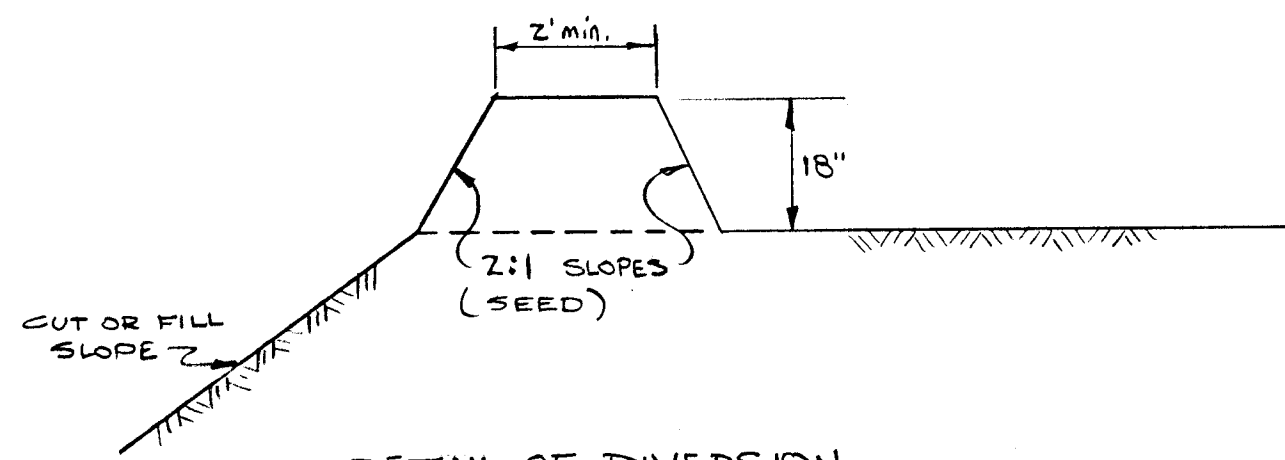
Rev Date	Rev No	Revision Description

**COLUMBIA**  
5 ELECTION DISTRICT  
HOWARD COUNTY, MARYLAND  
OWNER AND DEVELOPER  
HOWARD RESEARCH AND DEVELOPMENT CORP.  
THE VILLAGE OF CROSS KEYS - BALTIMORE, MARYLAND 21210

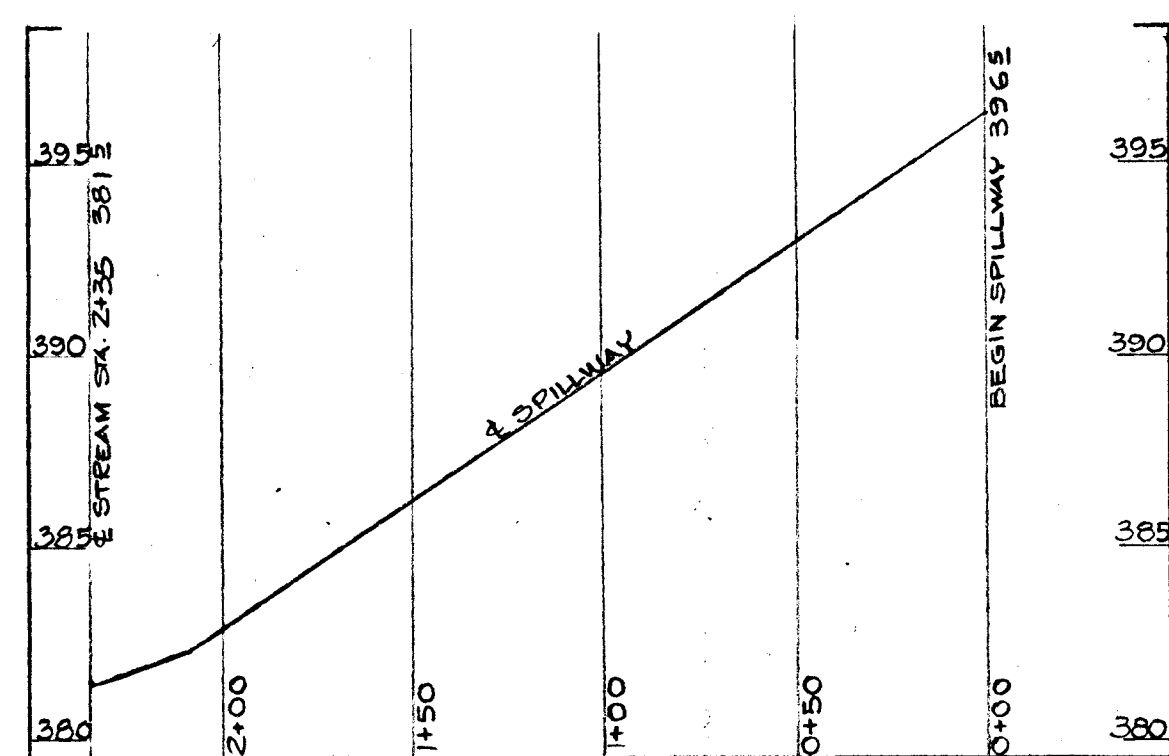
PROJECT AREA: VILLAGE OF HARPER'S CHOICE  
SECTION 4 SWANSFIELD AREA 3

PROJECT TITLE: ROADWAY DETAILS

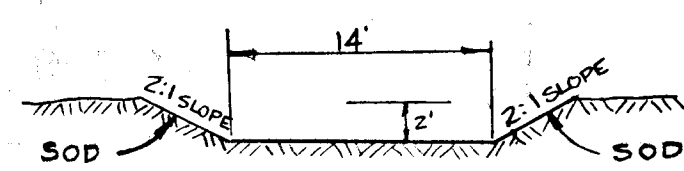
Des By: E.T.	Scale: AS SHOWN	Dwg No: 4-10-95
Drn By: E.T.	Date: FEB 26 1989	C.C.F. No
CHK By: T.S.	Approved	



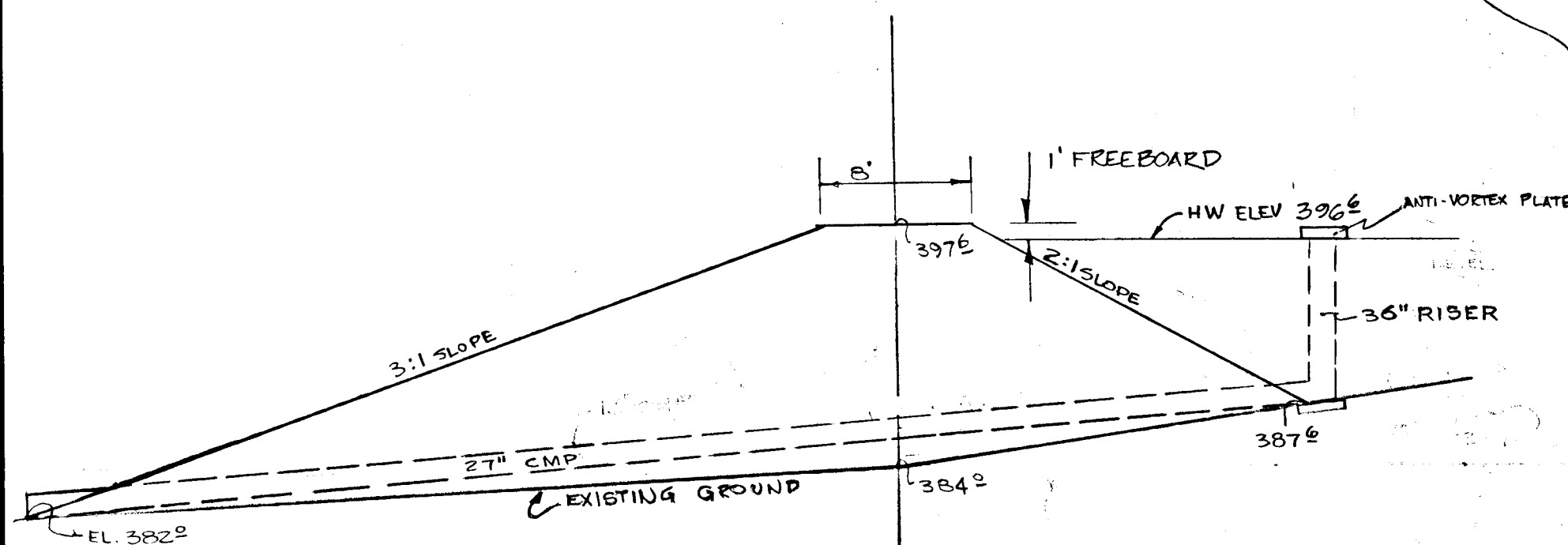
DETAIL OF DIVERSION BERM  
NOT TO SCALE



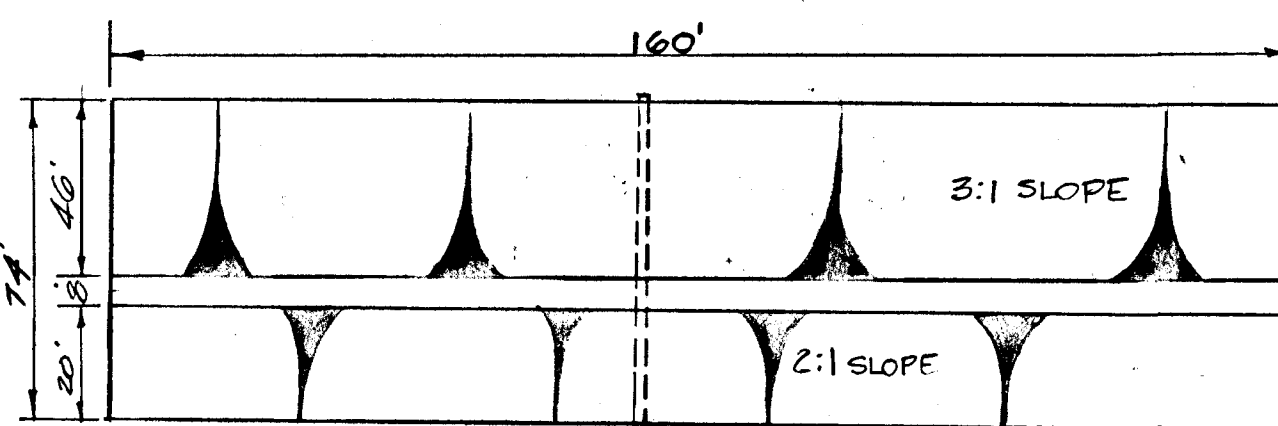
PROFILE OF SPILLWAY  
SCALE: VERT. 1"=5', HOR. 1"=50'



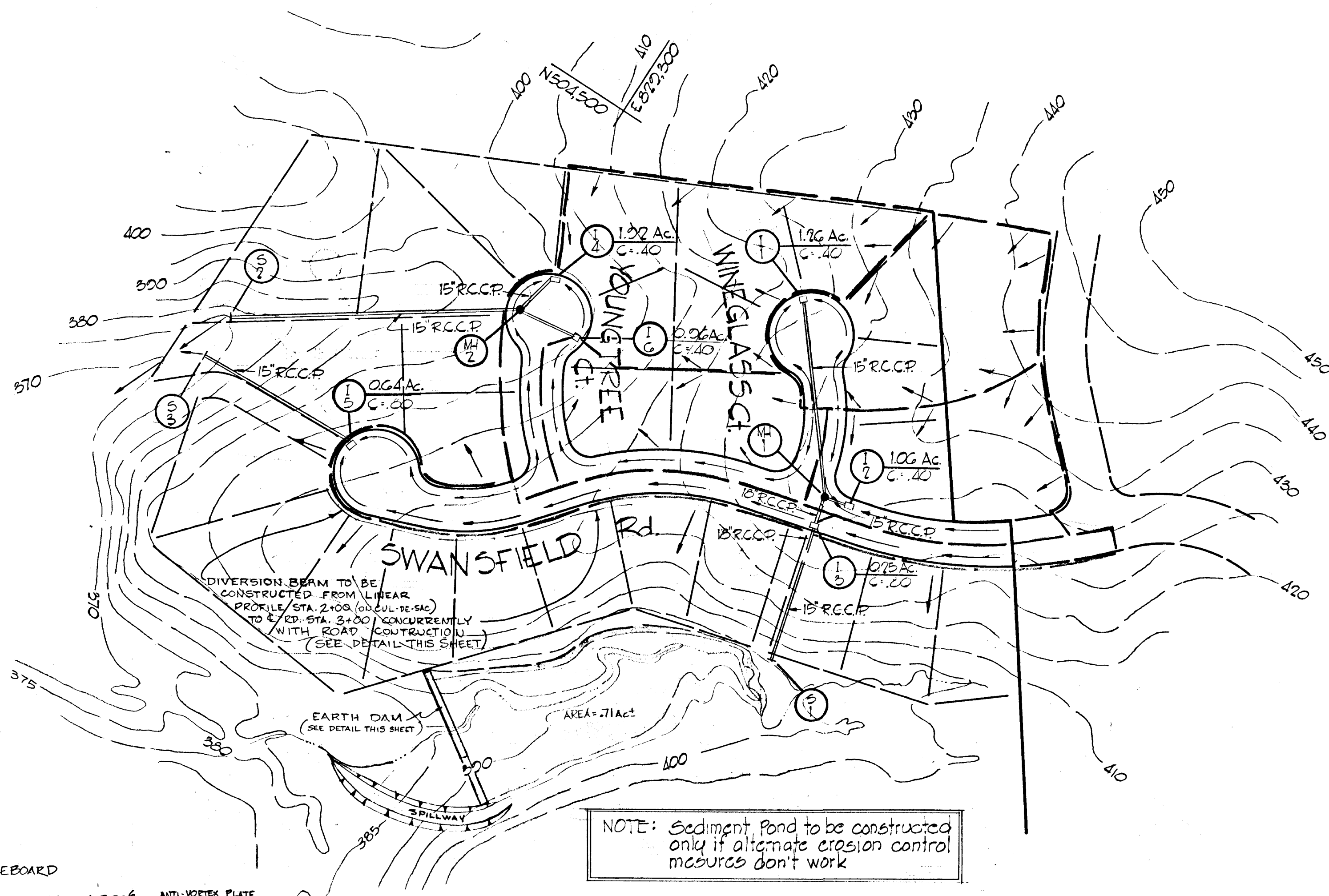
DETAIL OF SOD CHANNEL SPILLWAY  
NOT TO SCALE



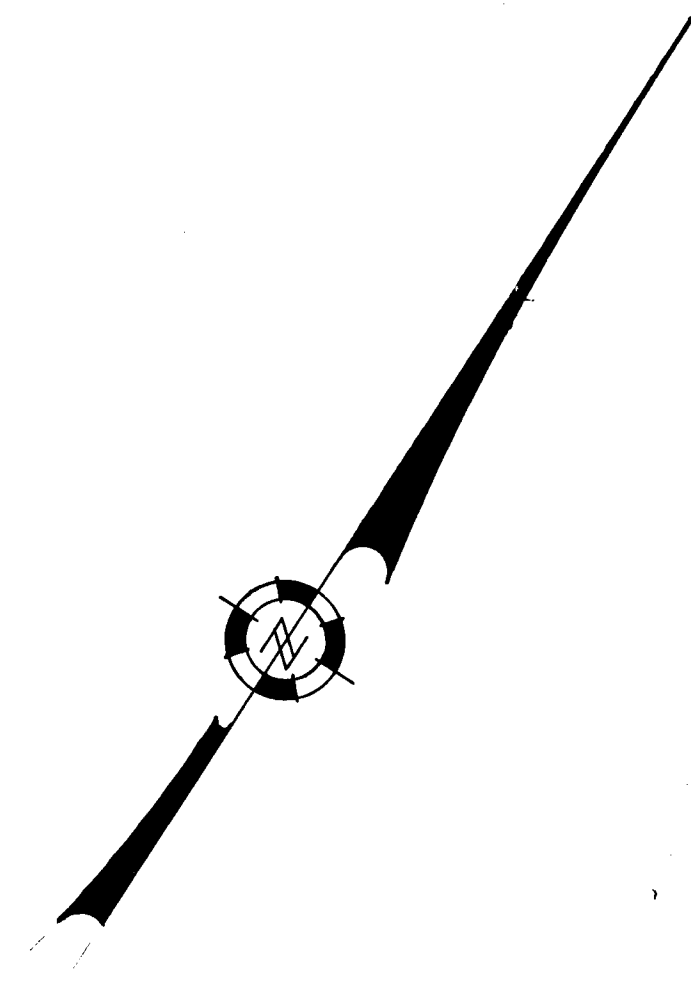
SECTION VIEW OF EARTH DAM  
NOT TO SCALE



PLAN  
NOT TO SCALE

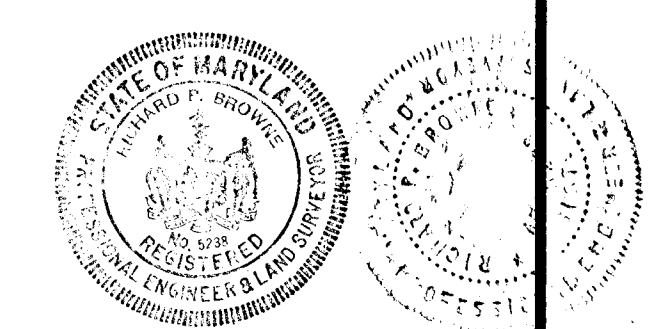


NOTE: Sediment Pond to be constructed only if alternate erosion control measures don't work



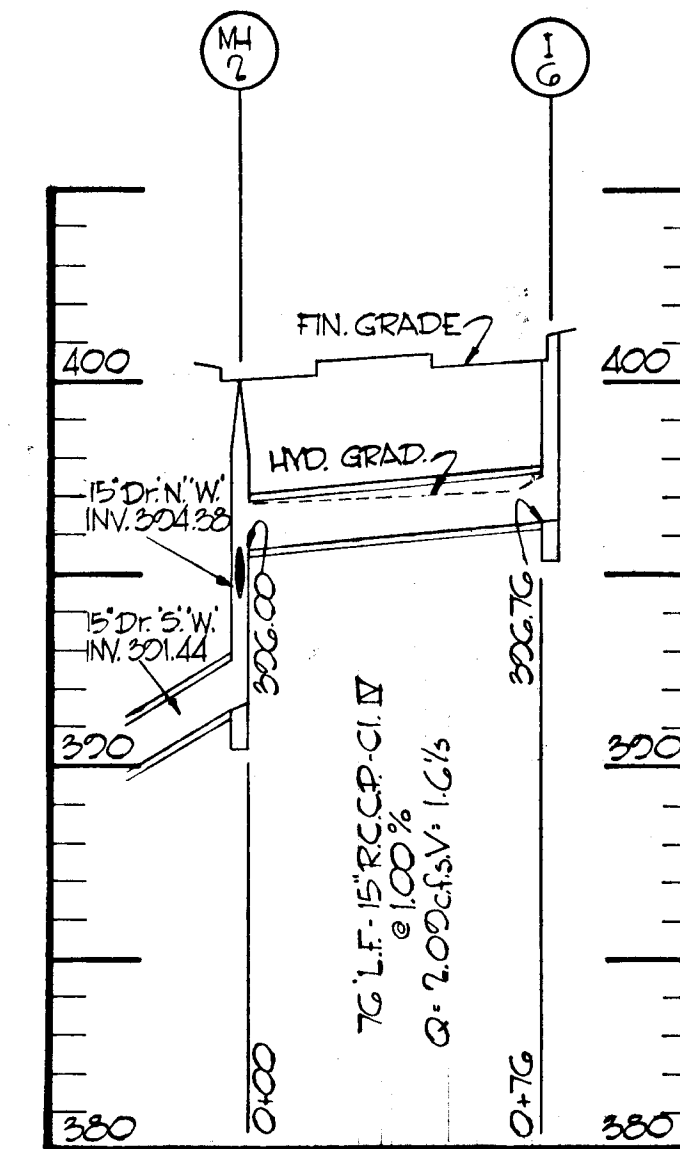
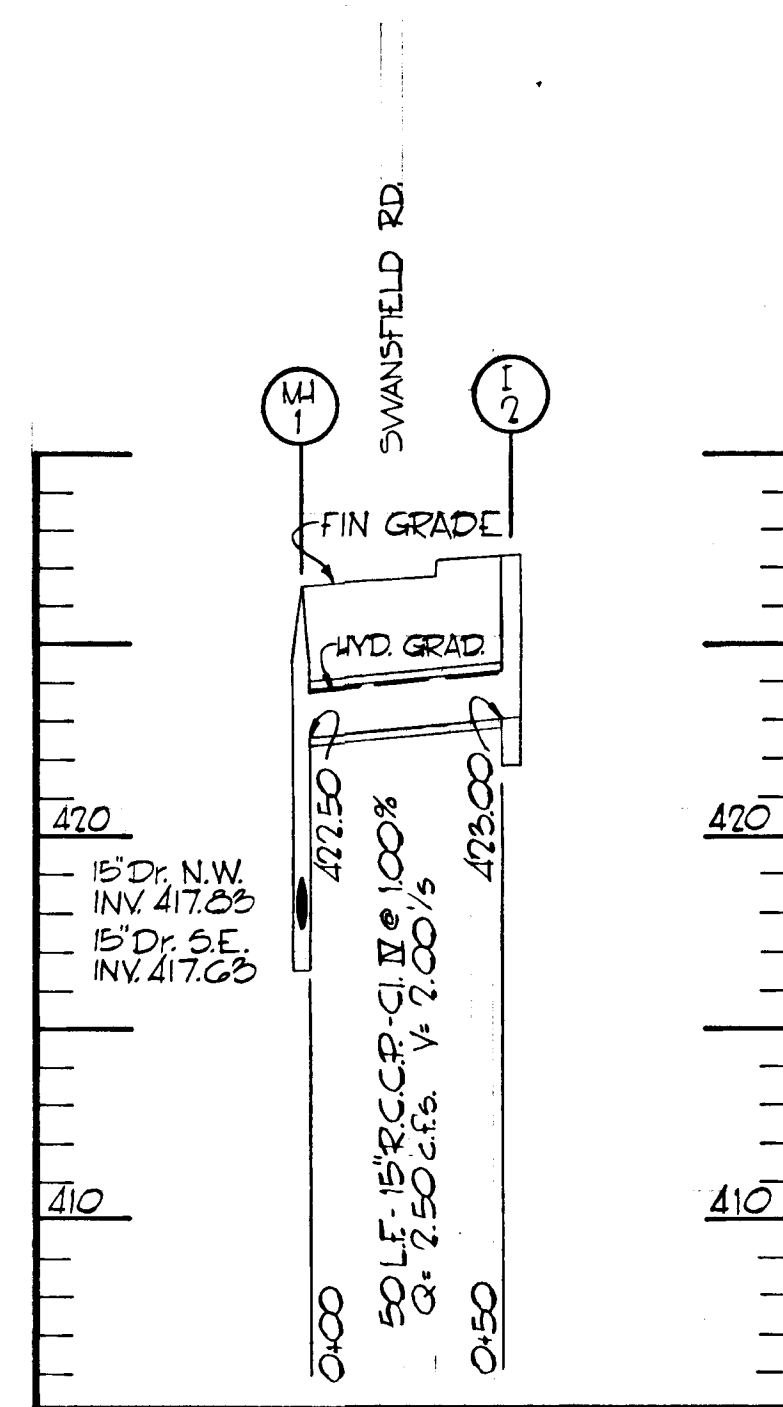
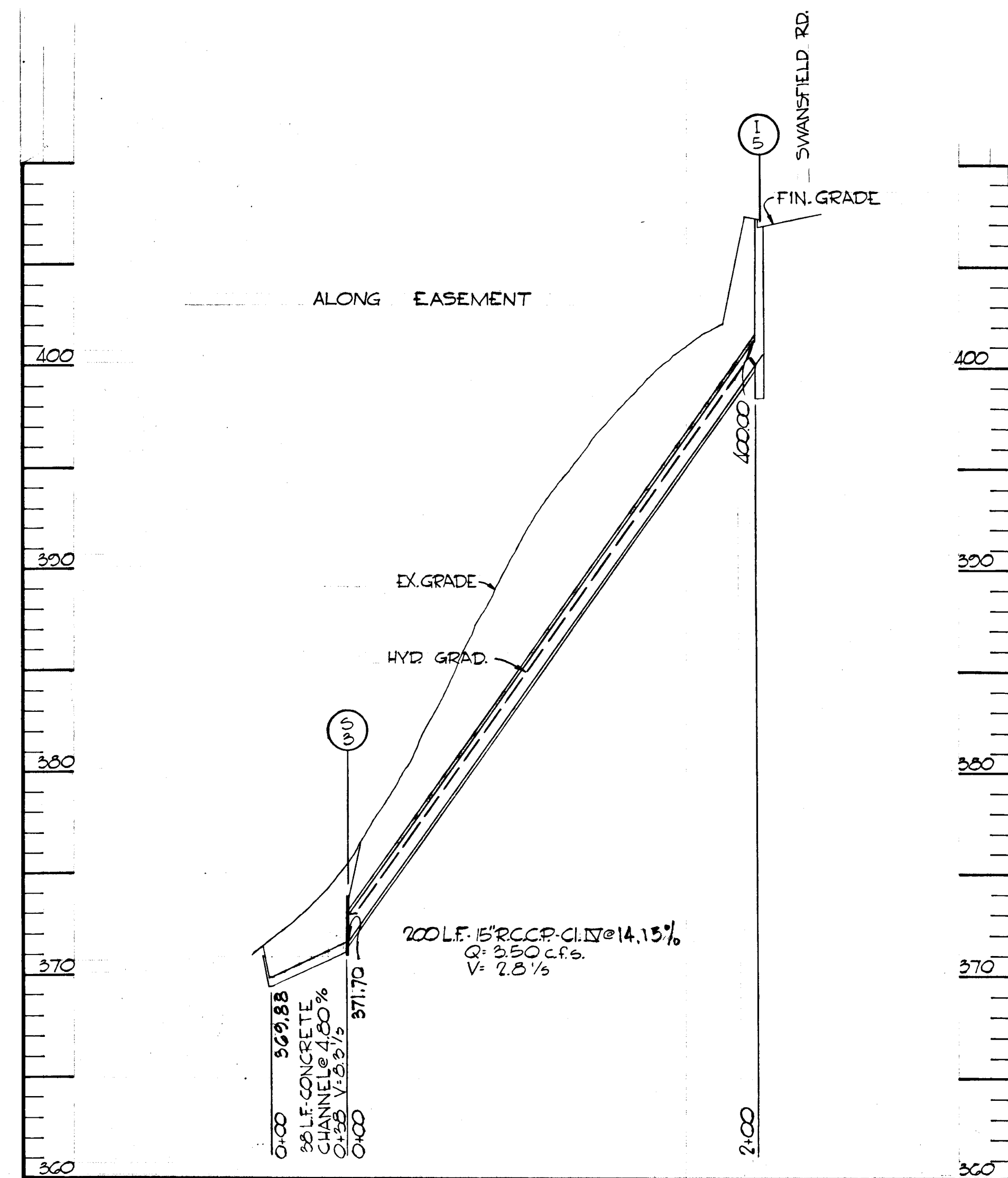
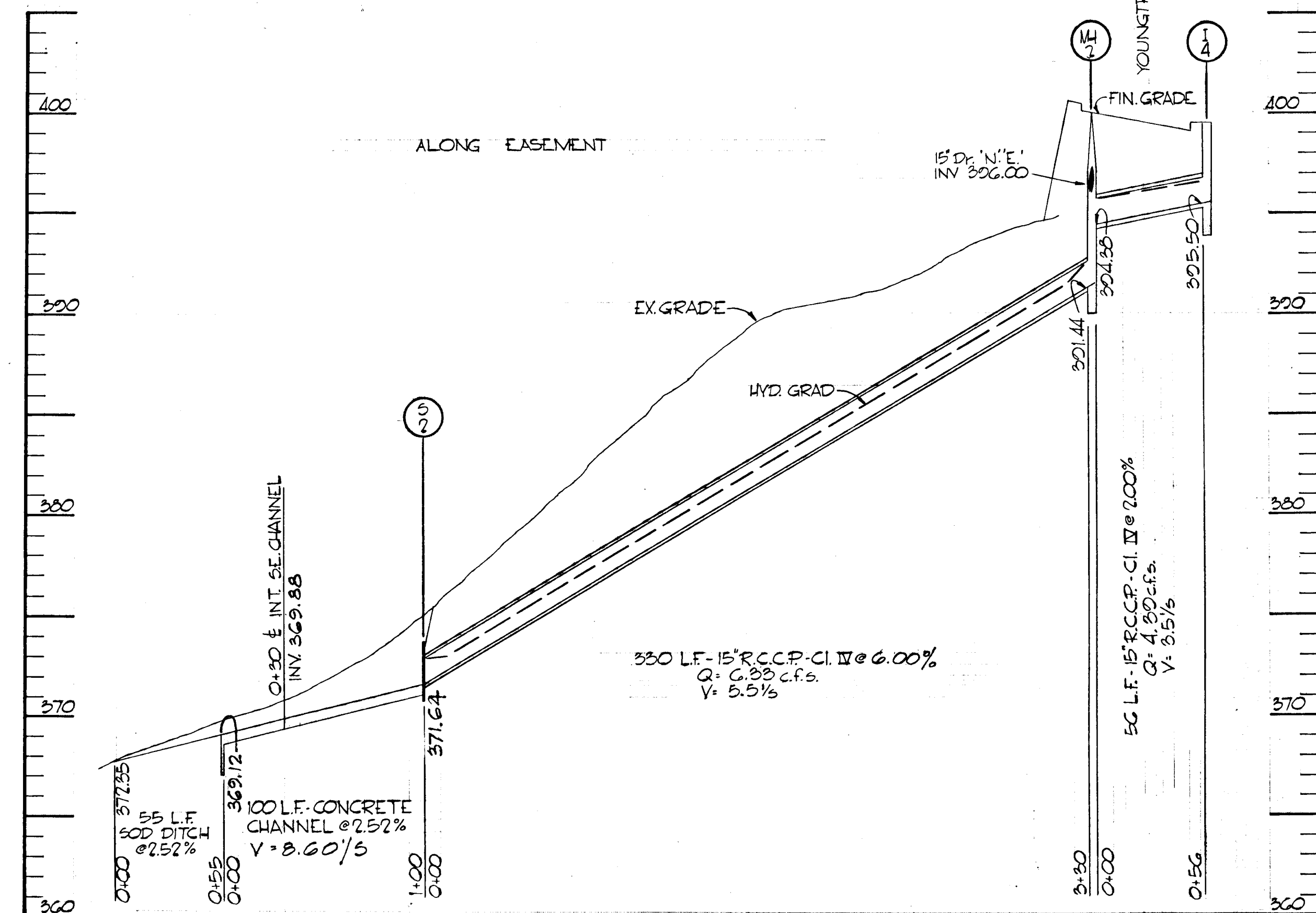
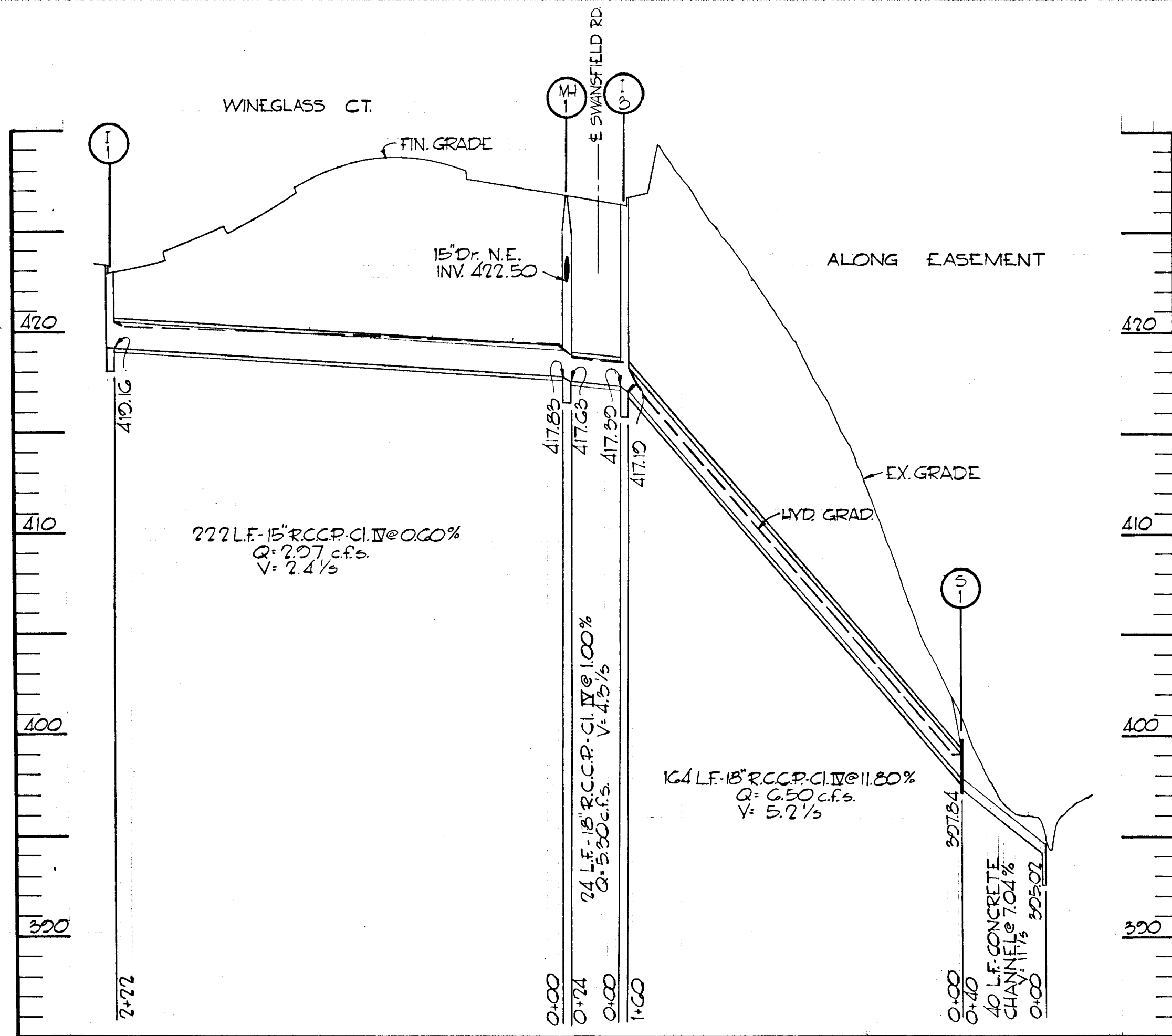
APPROVED  
DIVISION OF  
LAND DEVELOPMENT  
OFFICE OF  
PLANNING AND ZONING  
OF HOWARD COUNTY  
DATE: AUG 22 1969

*J.W.E.T.*



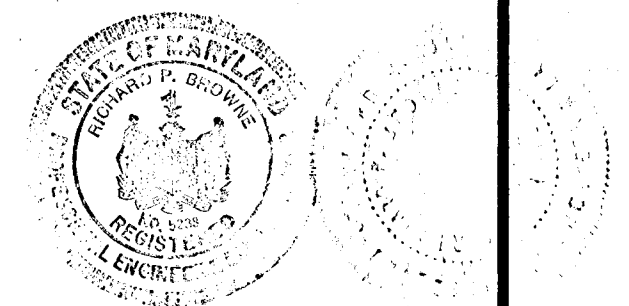
*Richard P. Browne*  
RICHARD P. BROWNE P.E. & L.S. #5225

RICHARD P. BROWNE ASSOCIATES CONSULTING ENGINEERS - PLANNERS COLUMBIA MARYLAND			
Rev Date	Rev No	Revision Description	
<p><b>COLUMBIA</b> 5 ELECTION DISTRICT HOWARD COUNTY, MARYLAND OWNER AND DEVELOPER <b>HOWARD RESEARCH AND DEVELOPMENT CORP.</b> THE VILLAGE OF CROSS KEYS - BALTIMORE, MARYLAND 21210</p>			
PROJECT AREA VILLAGE OF HARPER'S CHOICE SECTION 4 SWANSFIELD AREA 3			
PROJECT TITLE DRAINAGE AREA MAP			
Des By	IS	Scale 1"=100'	Dwg No 5 of 6
Drn By	FT	Date FEB 26, 1969	C.C.F. No
Chk By	IS	Approved	



**APPROVED**  
DIVISION OF  
LAND DEVELOPMENT  
OFFICE OF  
PLANNING AND ZONING  
OF HOWARD COUNTY  
DATE: AUG 22 1968

*J.H.F.*



*Richard P. Browne*  
RICHARD P. BROWNE P.E. # L.S. # 5226

RICHARD P. BROWNE ASSOCIATES CONSULTING ENGINEERS - PLANNERS COLUMBIA, MARYLAND			
Rev Date	Rev No	Revision Description	FT.
6-2-68	3	AOD INLET I-G	
<b>COLUMBIA</b>			
5 ELECTION DISTRICT HOWARD COUNTY, MARYLAND OWNER AND DEVELOPER			
HOWARD RESEARCH AND DEVELOPMENT CORP. THE VILLAGE OF GROSS KEYS - BALTIMORE, MARYLAND 21210			
PROJECT AREA VILLAGE OF HARPER'S CHOICE SECTION 4 SWANSFIELD AREA 3			
PROJECT TITLE DRAINAGE PROFILES			
Des By	T.S.	Scale 1/2" = 1'-0"	Dwg No G-01 G
Drn By	F.T.	Date FEB 20 1968	C.G.F. No
Chk By	T.S.	Approved	