

NOTE

1. THESE PLANS SUPERCEDE PREVIOUS PLANS FOR THE SAME SECTION OF HARPER'S FARM ROAD APPROVED DECEMBER 7, 1967
2. ALL DETAILS ARE FROM THE "ROAD CONSTRUCTION CODE AND STANDARD SPECIFICATIONS" ISSUED OR APPROVED BY HOWARD COUNTY AS REVISED IN AUGUST 1969
3. ALL ROAD CONSTRUCTION SHALL BE IN ACCORDANCE WITH HOWARD COUNTY SPECIFICATIONS

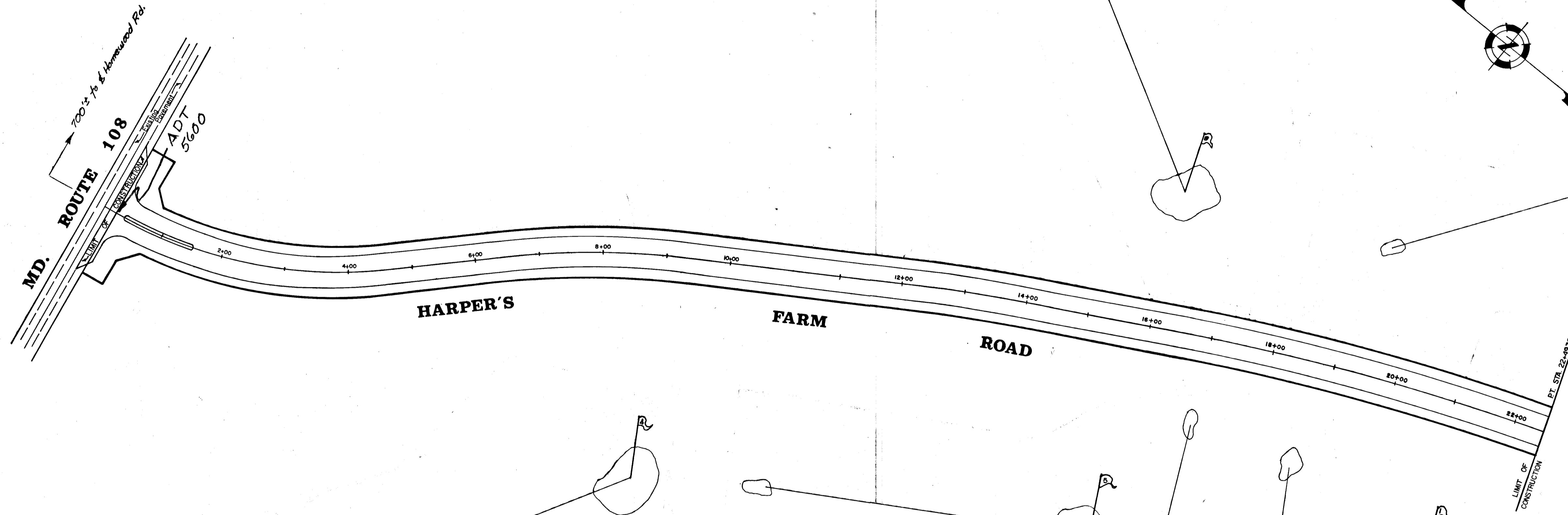
# COLUMBIA

HOWARD COUNTY, MARYLAND  
5th ELECTION DISTRICT

## HARPER'S FARM ROAD

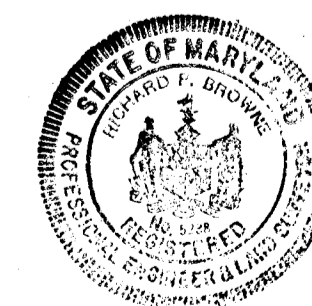
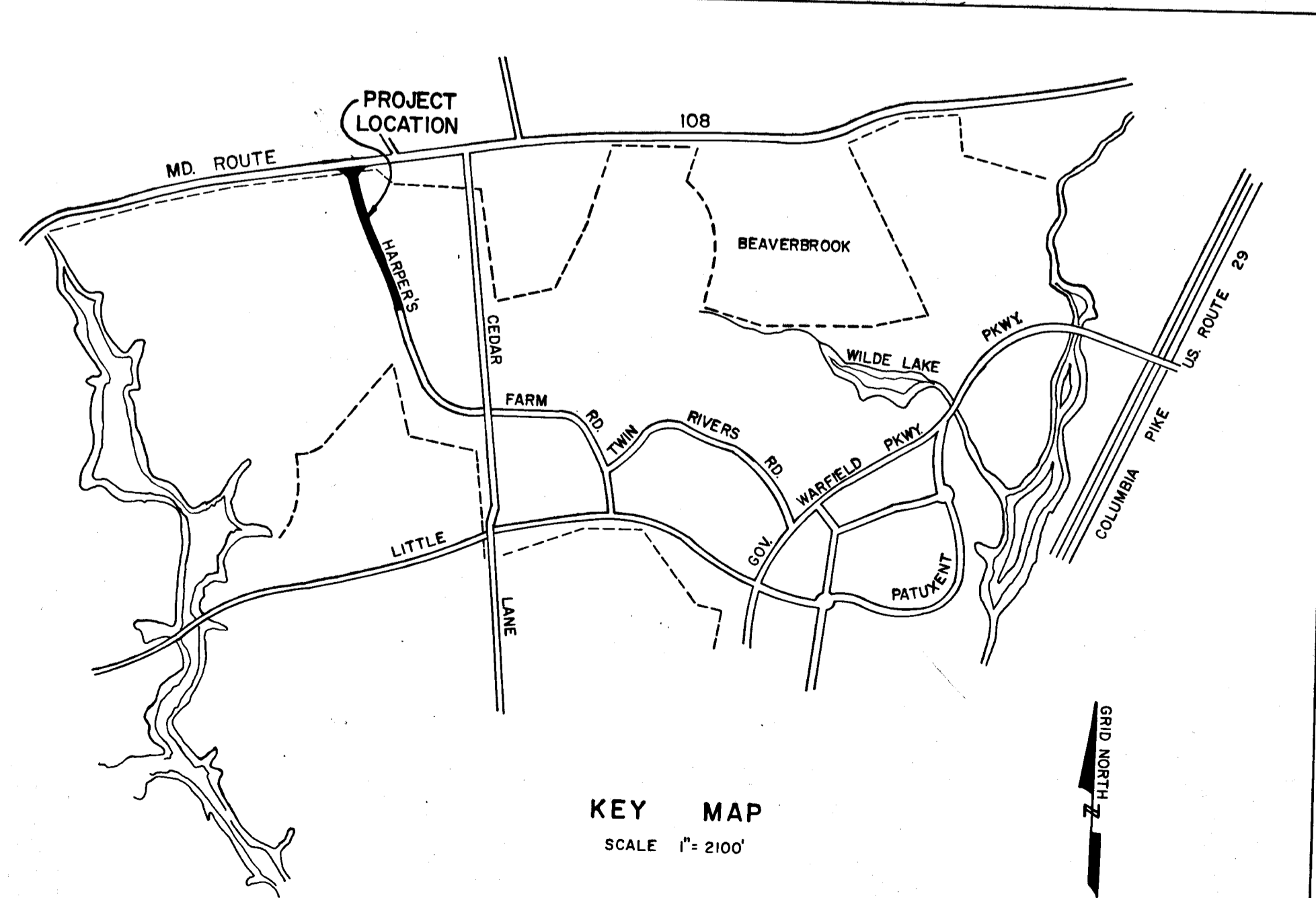
STA. 0+00 to STA. 22+49.30

SHEET INDEX	
SHEET No.	DESCRIPTION
1.	TITLE SHEET
2.	HARPER'S FARM RD. STA. 0+00 - 12+74.61
3.	HARPER'S FARM RD. STA. 12+74.61 - 22+49.30
4.	ROADWAY DETAILS
5.	DRAINAGE AREA MAP



OWNER & DEVELOPER  
**THE HOWARD RESEARCH AND DEVELOPMENT CORP.**  
 THE VILLAGE OF CROSS KEYS  
 BALTIMORE, MARYLAND

Scale: 1" = 100'



RICHARD P. BROWNE ASSOCIATES CONSULTING ENGINEERS-PLANNERS COLUMBIA, MARYLAND Richard P. Browne RICHARD P. BROWNE PE & LS LIC. NO. 5236 STATE MD.	DEPARTMENT OF PUBLIC WORKS Chief, Bureau of Highways Francis W. McLeod 8-5-69 DATE
	OFFICE OF PLANNING AND ZONING Chief Engineer, Division of Land Use J. H. Claws 8-7-69 DATE

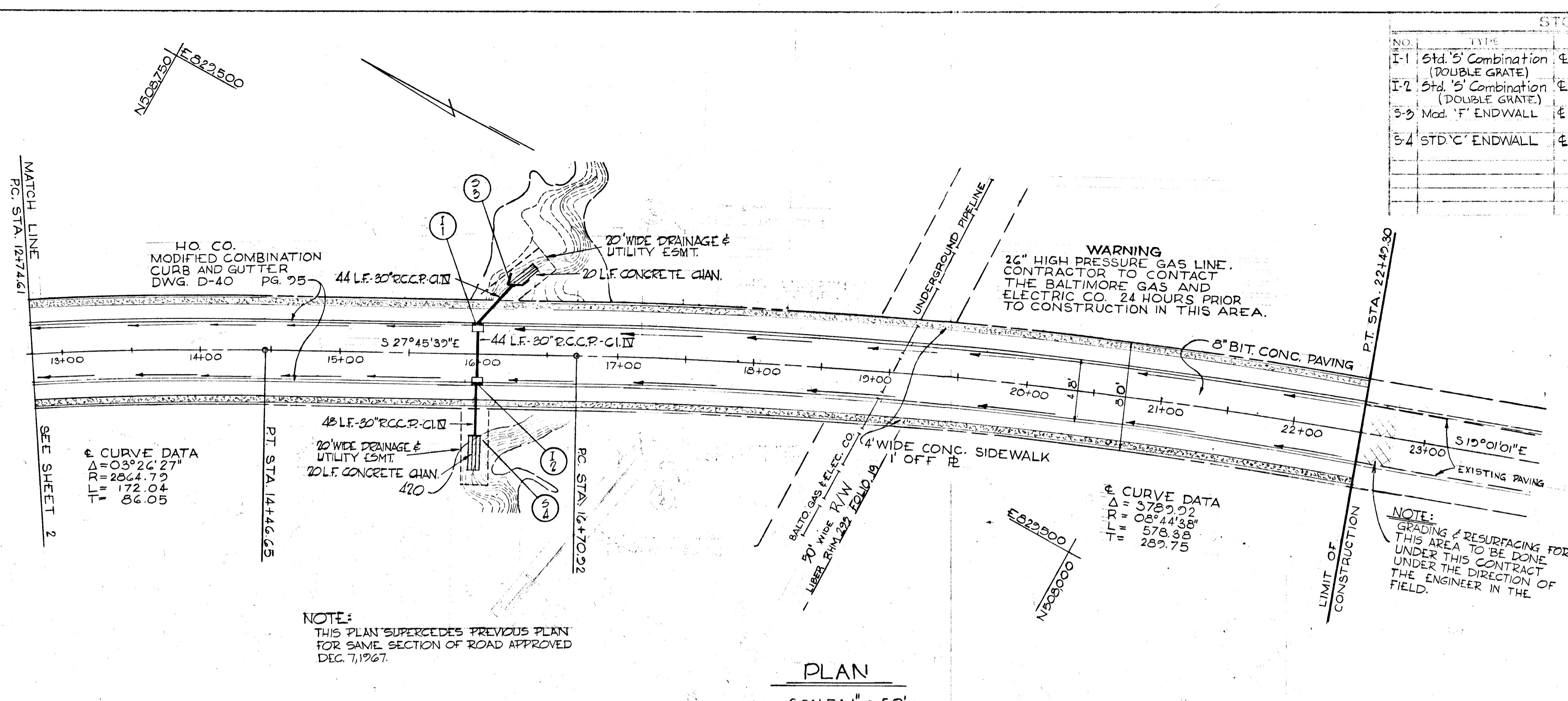
As-Built July 9, 1973

F-69-14



PLAN  
 CHECKED BY: [Signature]  
 DATE: [Date]  
 DRAWN BY: [Signature]  
 DATE: [Date]

PROFILE  
 CHECKED BY: [Signature]  
 DATE: [Date]  
 DRAWN BY: [Signature]  
 DATE: [Date]



NOTE:  
 THIS PLAN SUPERCEDES PREVIOUS PLAN  
 FOR SAME SECTION OF ROAD APPROVED  
 DEC. 7, 1967.

PLAN  
 SCALE: 1" = 50'

NO.	TYPE	LOCATION	IN	OUT	DEPTH	REMARKS
I-1	Std. 5' Combination (DOUBLE GRATE)	± STA. 16+00 22' 16' Lt. E (E INLET)	410.10	418.80	432.64	Ho. Co. Std. DWG D-99 Pg. 154
I-2	Std. 5' Combination (DOUBLE GRATE)	± STA. 16+00 22' 16' Rt. E (E INLET)	417.70	417.50	432.64	Ho. Co. Std. DWG D-99 Pg. 154
S-3	Mod. 1' ENDWALL	± STA. 16+25 55' Lt. E	420.00			HOWARD COUNTY STD. DWG. D-52 Pg. III
S-4	STD. 'C' ENDWALL	± STA. 16+00 05' Rt. E	416.70			HOWARD COUNTY STD. DWG. D-52 Pg. 107

**APPROVED**  
 DIVISION OF  
 LAND DEVELOPMENT  
 OFFICE OF  
 PLANNING AND ZONING  
 OF HOWARD COUNTY  
 DATE: Aug 7 1969

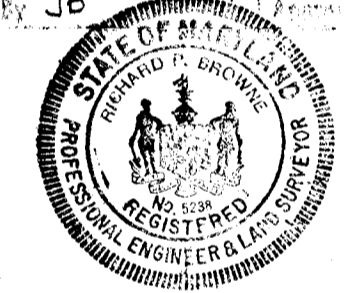
RICHARD P. BROWNE & ASSOCIATES  
 CONSULTING ENGINEERS - PLANNERS  
 COLUMBIA, MARYLAND

MAR-3-00 | REVISE PROFILE GRADE STA 13+00 TO 23+00  
 CHANGE I-1 & I-2 TO 'S' Comb. INLETS - ET.  
 Rev. No. 1  
 Rev. Date [Date]

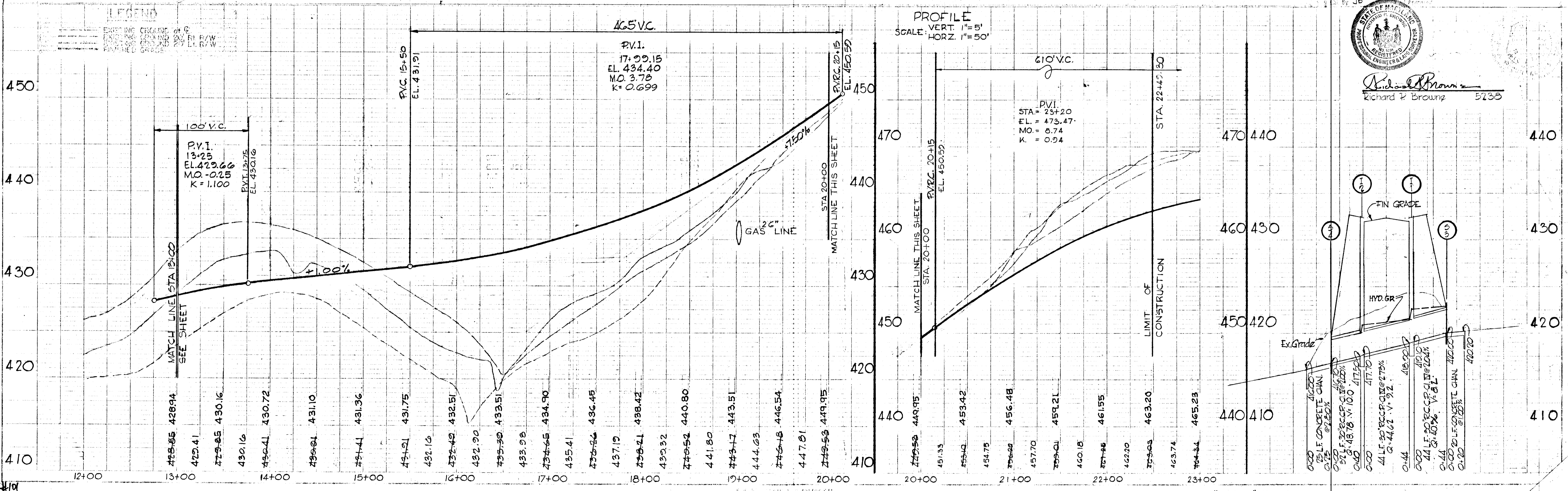
**COLUMBIA**  
 5TH ELECTION DISTRICT  
 HOWARD COUNTY MARYLAND  
 HOWARD RESEARCH AND DEVELOPMENT CORP.  
 THE VILLAGE OF CROSS KEYS - BALTIMORE MARYLAND 21210

**HARPER'S FARM ROAD**  
 PLAN & PROFILE

P.C. STA. 12+74.61 - P.T. STA. 22+49.30  
 T.S. AS SHOWN 3 of 5  
 B.P. 27 JAN. 1969

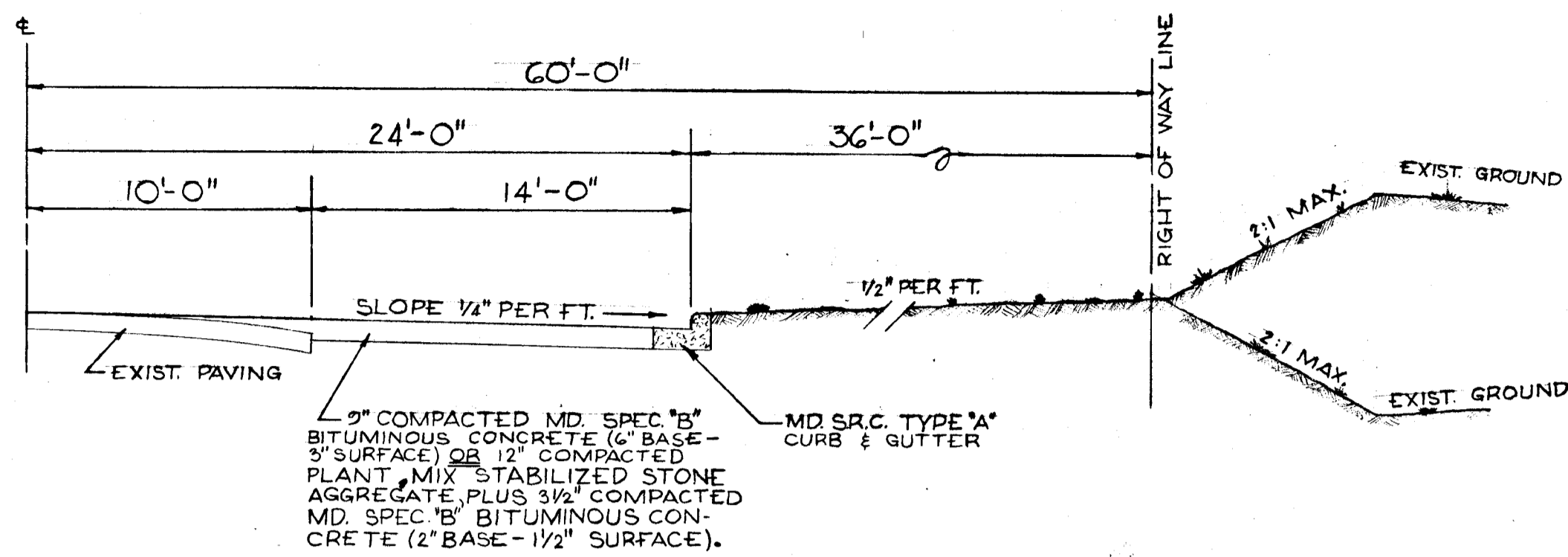


*Richard P. Browne*  
 Richard P. Browne 5238

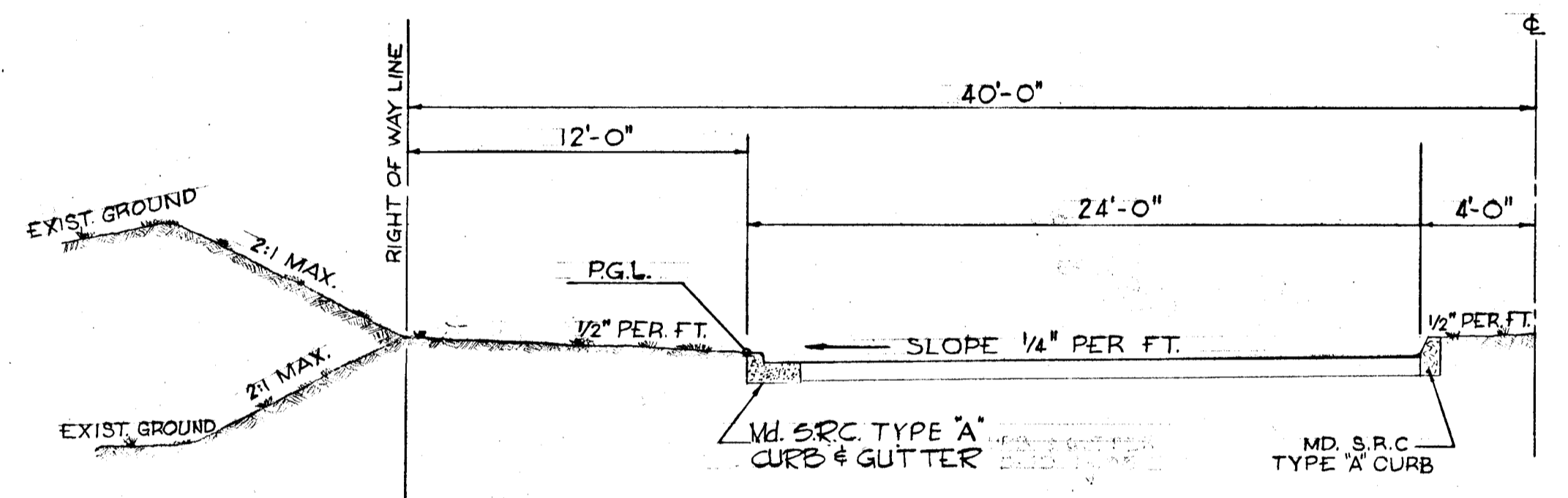
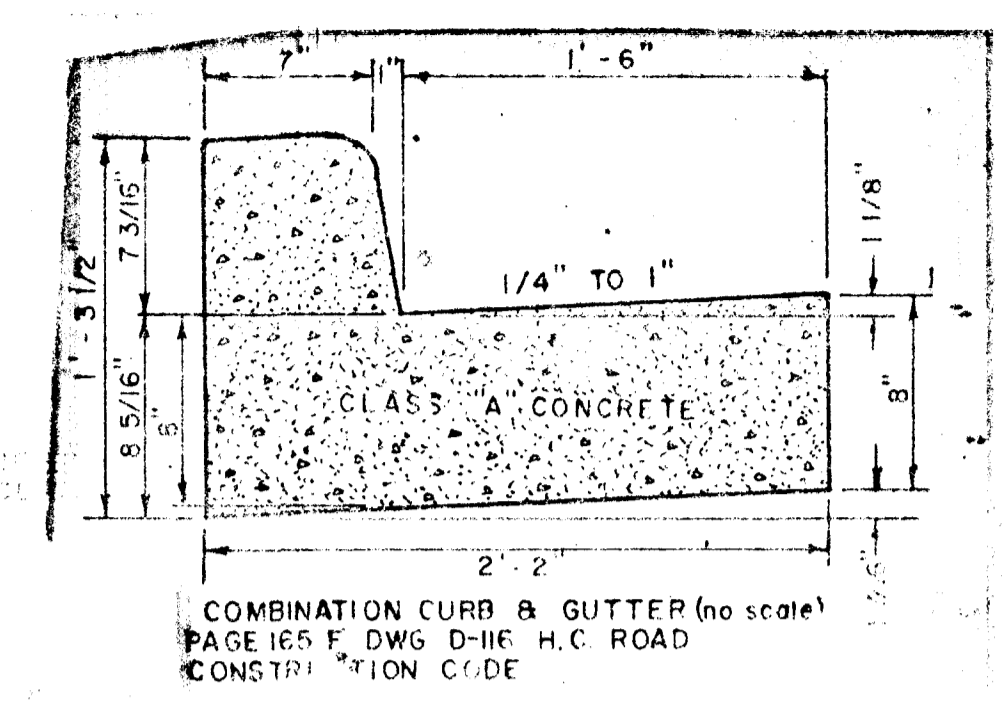


PROFILE  
 SCALE: VERT. 1" = 5'  
 HORZ. 1" = 50'

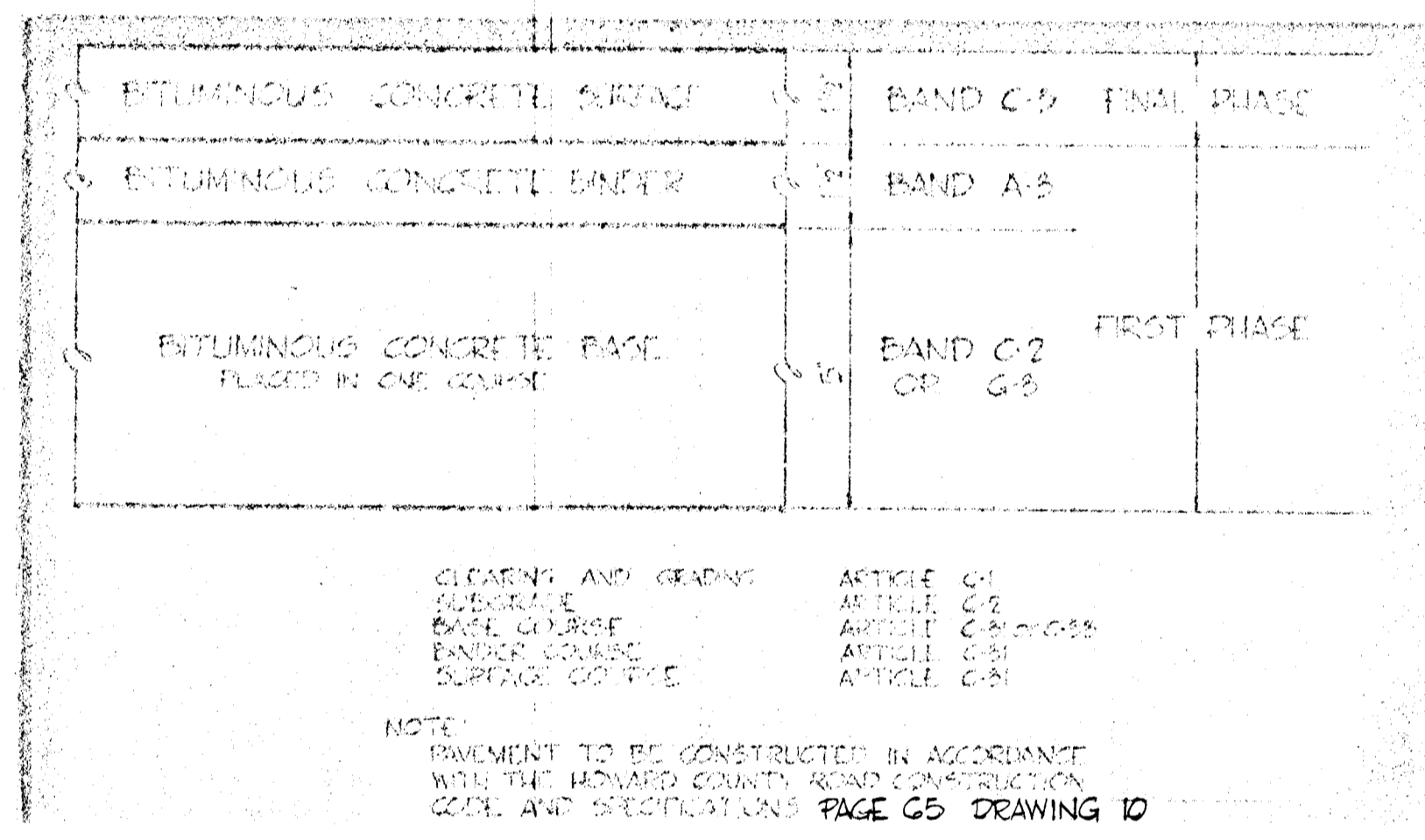
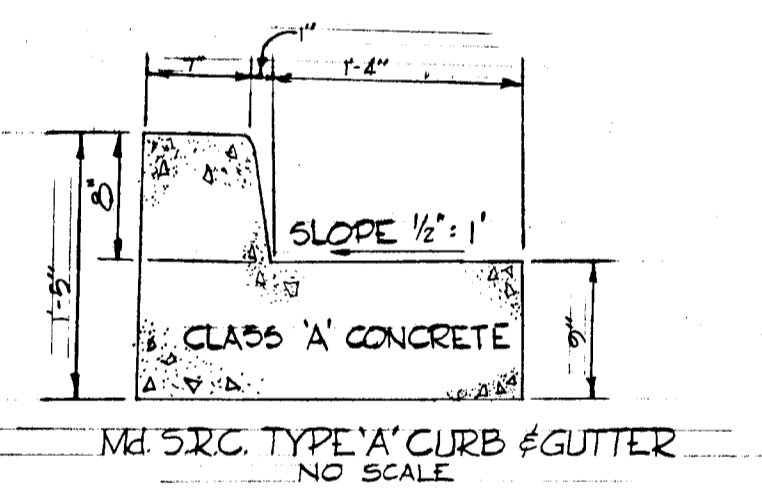
"As-Built" July 3, 1973



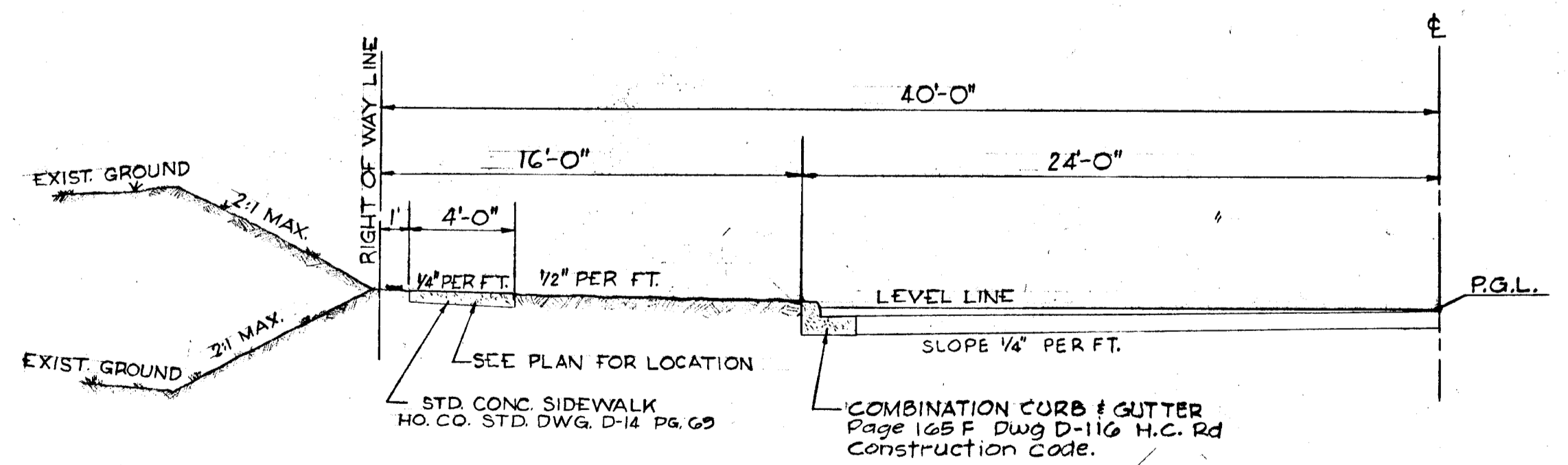
**TYPICAL WIDENING OF RTE. 108**  
 SCALE: 1" = 5'



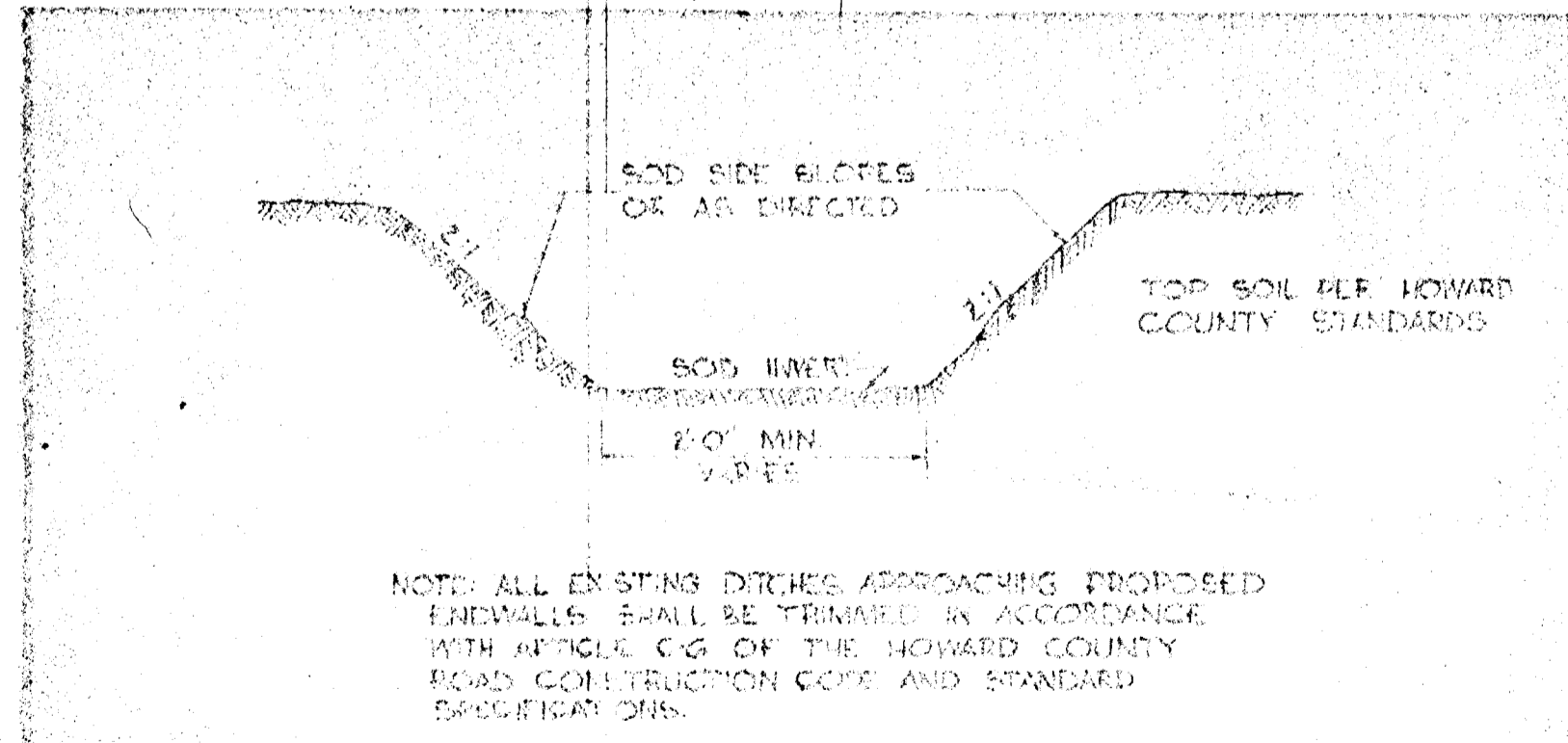
**80' R.O.W. TYPICAL HALF - SECTION**  
 SCALE: 1" = 5'



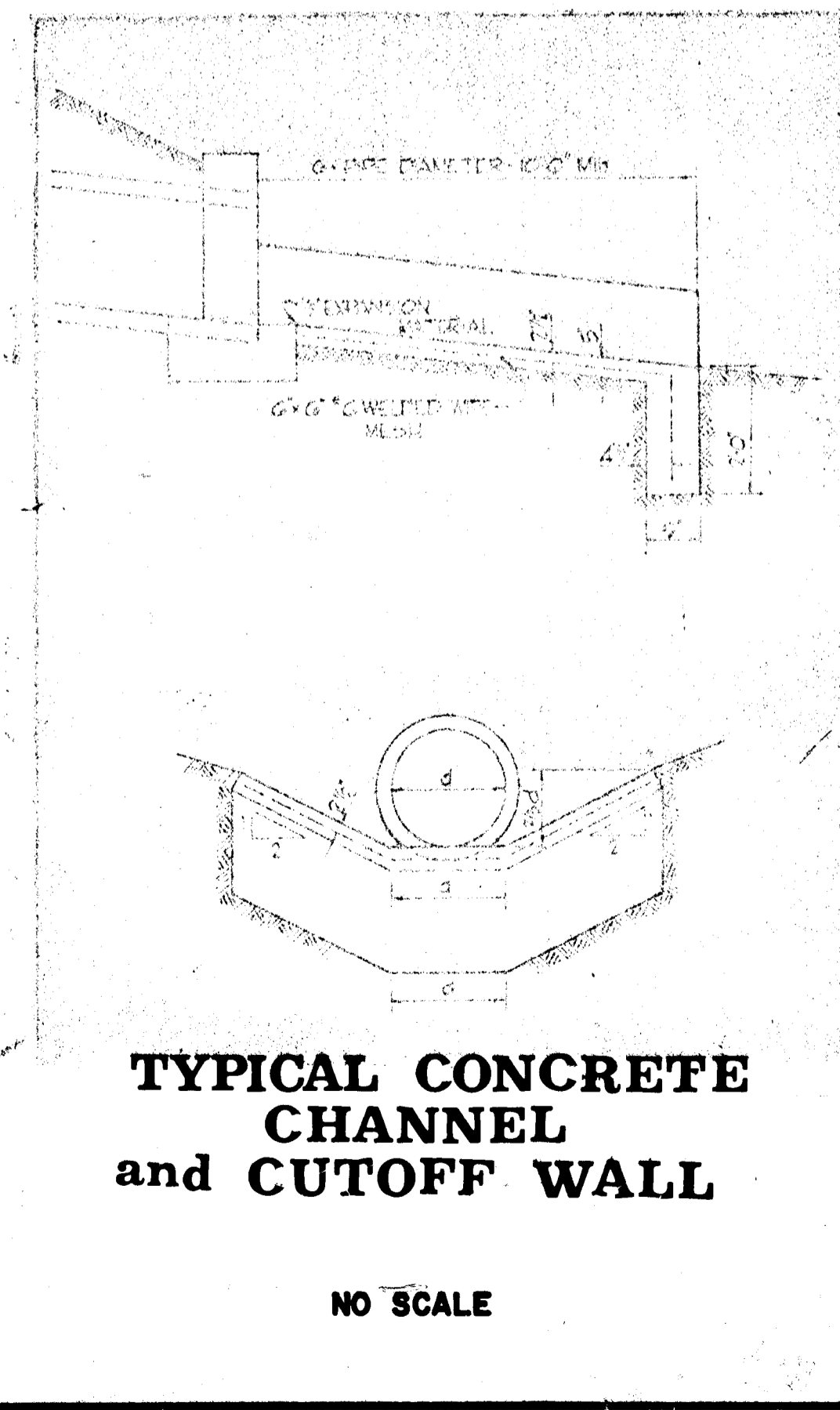
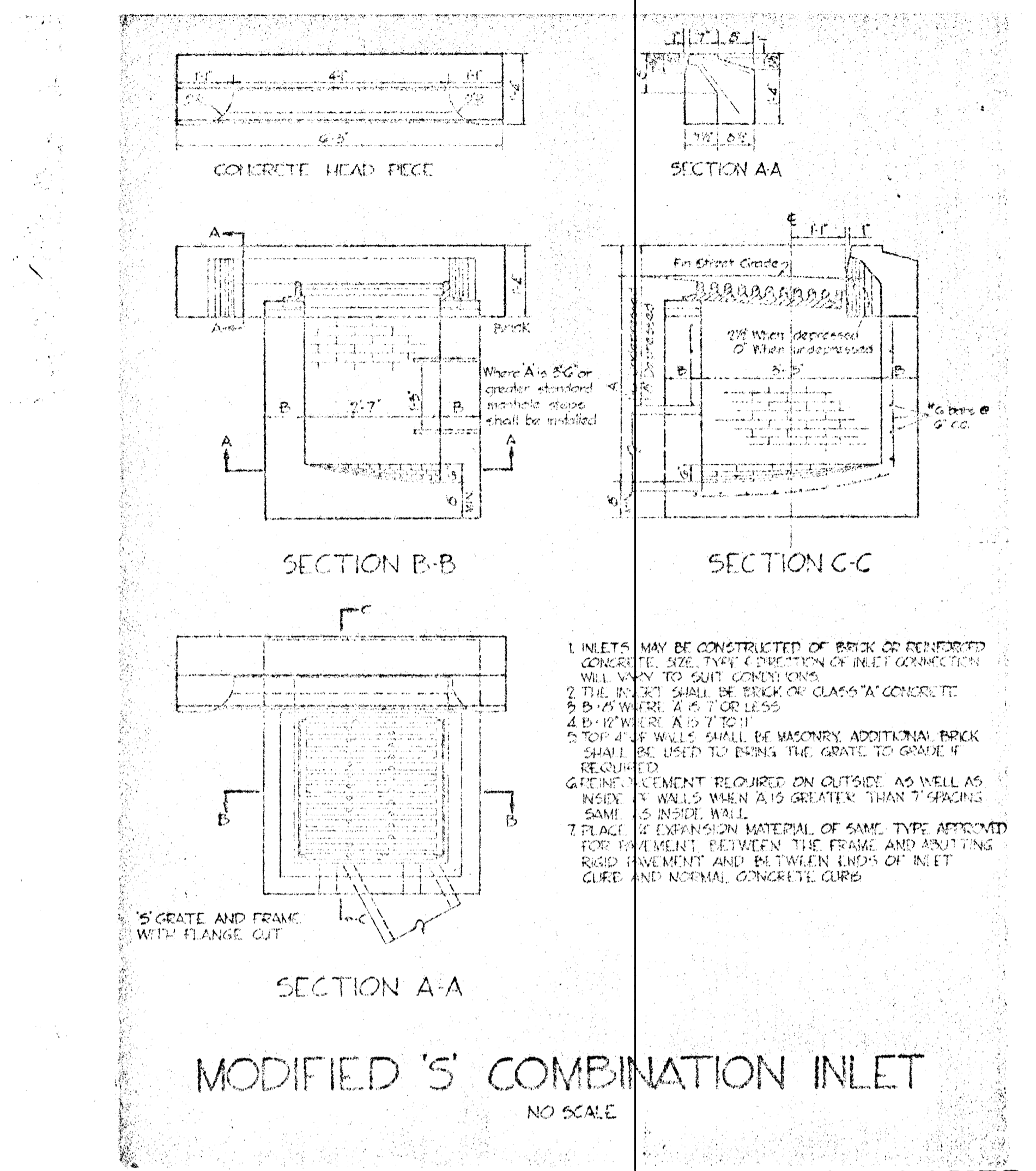
**8" PAVEMENT DETAIL**  
 NO SCALE



**80' R.O.W. TYPICAL HALF - SECTION**  
 SCALE: 1" = 5'



**TYPICAL DRAINAGE DITCH**  
 NO SCALE



**APPROVED**  
 DIVISION OF  
 LAND DEVELOPMENT  
 OFFICE OF  
 PLANNING AND ZONING  
 OF HOWARD COUNTY  
 DATE: AUG 7 1969  
 [Signature]

RICHARD P. BROWNE RE.# LS# 5228

RICHARD P. BROWNE ASSOCIATES  
 CONSULTING ENGINEERS - PLANNERS  
 COLUMBIA, MARYLAND

Rev Date	Rev No	Revision Description

**COLUMBIA**  
 5TH ELECTION DISTRICT  
 HOWARD COUNTY MARYLAND  
 OWNER AND DEVELOPER  
 HOWARD RESEARCH AND DEVELOPMENT CORP.  
 THE VILLAGE OF CROSS KEYS - BALTIMORE, MARYLAND 21210

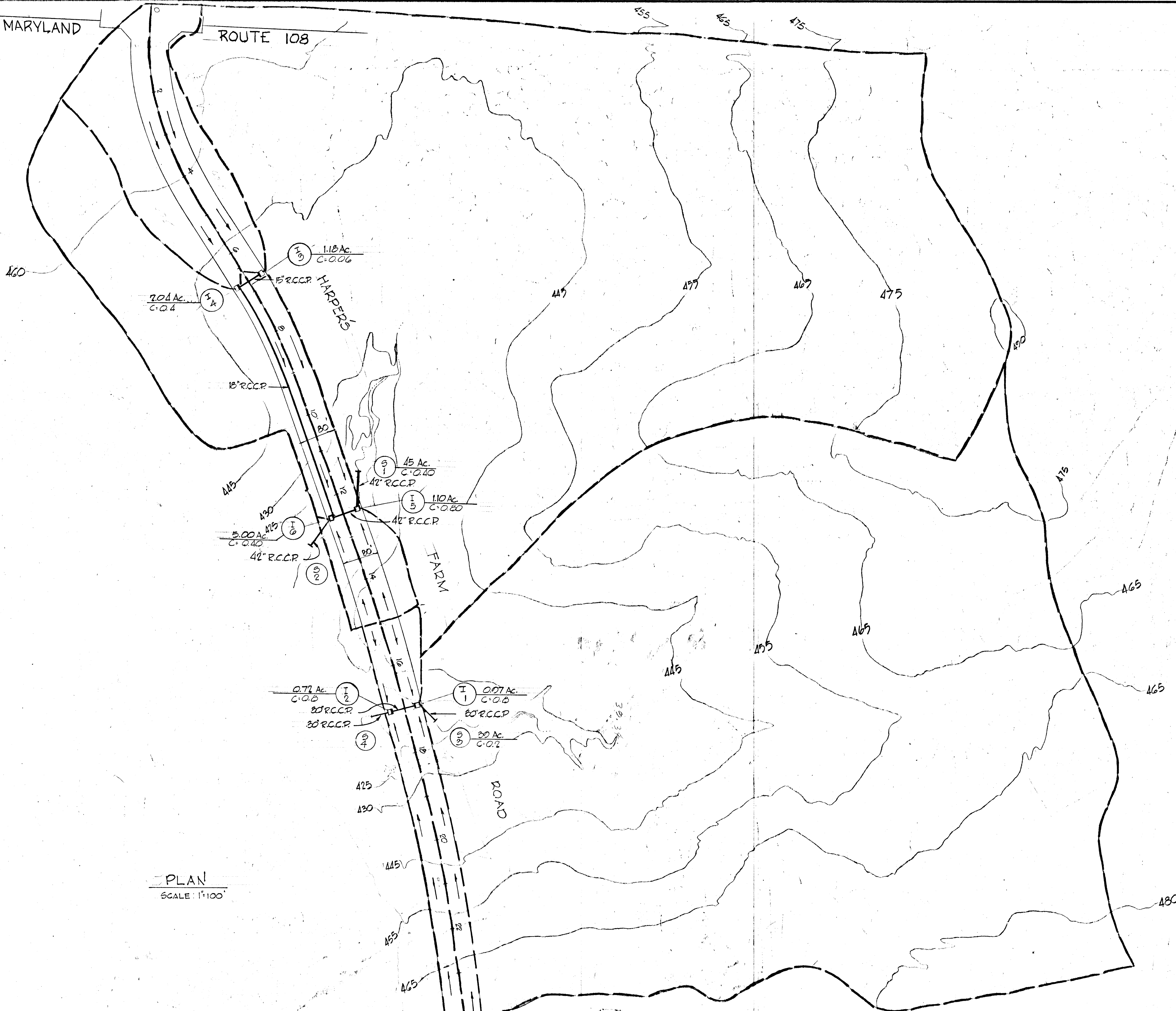
PROJECT AREA  
**HARPER'S FARM ROAD**

PROJECT TITLE  
 ROADWAY DETAILS

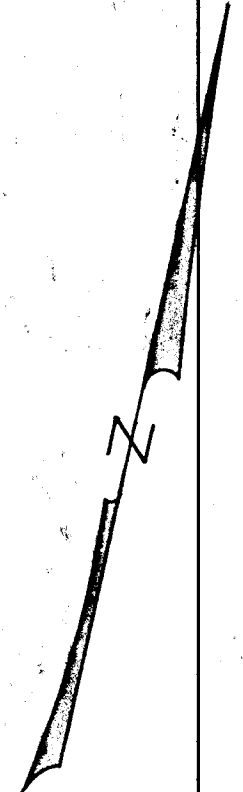
Des By T. S.	Scale AS SHOWN	Dwg No 4 of 5
Drn By	Date 27 JAN. 69	C. C. F. No
Chk By JB.	Approved	

MARYLAND

ROUTE 108



PLAN  
SCALE: 1"=100'



**APPROVED**  
 DIVISION OF  
 LAND DEVELOPMENT  
 OFFICE OF  
 PLANNING AND ZONING  
 OF HOWARD COUNTY  
 DATE: 1/16 / 1969



Richard P. Browne  
 RICHARD P. BROWNE RE. & L.S. #5735

RICHARD P. BROWNE ASSOCIATES  
 CONSULTING ENGINEERS - PLANNERS  
 COLUMBIA, MARYLAND

Rev Date	Rev No	Revision Description
<b>COLUMBIA</b>		
5TH ELECTION DISTRICT HOWARD COUNTY MARYLAND		
OWNER AND DEVELOPER <b>HOWARD RESEARCH AND DEVELOPMENT CORP.</b> THE VILLAGE OF CROSS KEYS - BALTIMORE, MARYLAND 21210		
PROJECT AREA <b>HARPER'S FARM ROAD</b>		
PROJECT TITLE DRAINAGE AREA MAP		
Des By T.S.	Scale AS SHOWN	Dwg No 5 of 5
Drn By	Date 27 JAN 69	C.C.F. No
Chk By J.B.	Approved	

"As-Built" July 3, 1973

F-69-14