

March 11, 1969  
Date

W. J. Wakefield  
Reg. No. 4575

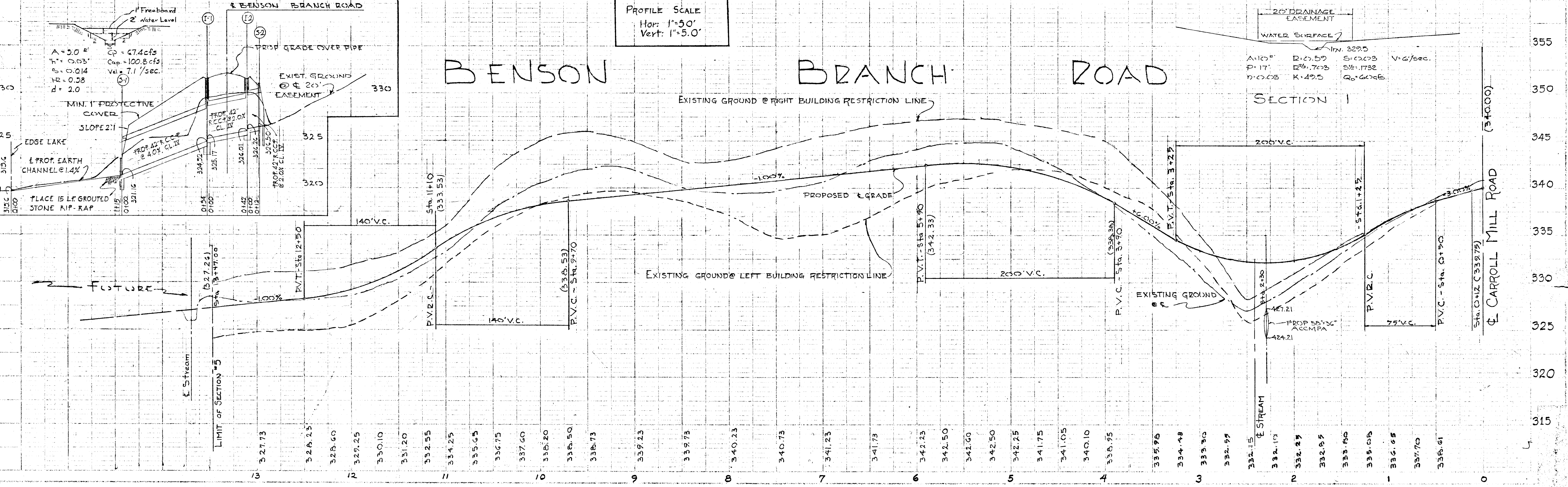
- GENERAL NOTES:**
- All road construction to be in accordance with Howard County Road Construction Code and STANDARD SPECIFICATIONS, Revised Aug. 1969
  - For details of roadway section see drawing D-15, Page 70 of Howard County Road Construction Code & Standard Specifications.
  - For details of TYPE "C" CONCRETE INLET see drawing D-69-C, Page 117-C, of the above mentioned specifications
  - For details of Standard End Support Wall see drwg. D-46 page 101 of the above mentioned specifications.
  - For details of Type "F" Endwall see drwg. D-56 page 111 of the above mentioned specifications.
  - For details of Temporary Dead End Barricade see drwg. D-109 page 164 of the above mentioned specifications.

PLAN & PROFILE: BENSON BRANCH ROAD  
SECTION N<sup>o</sup> 5

# Woodmark

THIRD ELECTION DISTRICT      HOWARD COUNTY MARYLAND  
APRIL 10, 1969      SCALE AS SHOWN

SHEET 1 of 1



#44