

That The Plan Of Development And
 The Control Of Erosion Meet The
 Requirements And Specifications Of The Howard
 Soil Conservation District.
 Date 6-22-71 Joseph C. Huang
 Date 6-22-71 Joseph C. Huang

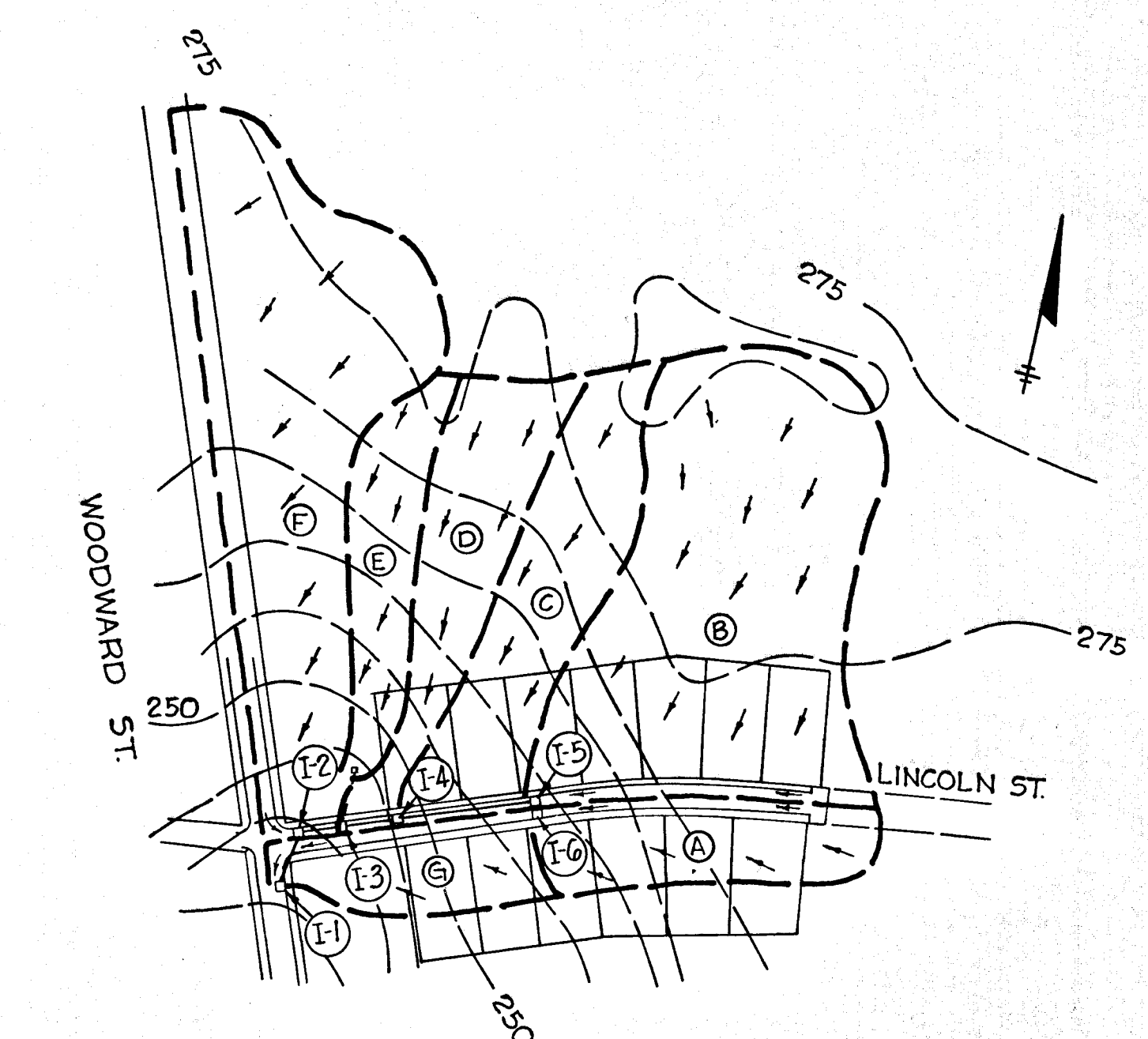
This Development Plan Is Approved For Soil
 Sediment Control By The Howard Soil Conser-
 vation.
 Reviewed Date: 6-29-71 James M. Adams
 DISTRICT CONSERVATIONIST
 Approved Date: 6-30-71 Rhet B. Campbell
 HOWARD SOIL CONSERVATION DISTRICT

I Certify That All Development And/Or Con-
 struction Will Be Done According To This Plan
 Of Development And Plan Of Silt And Sediment
 Control.
Joseph C. Huang 6/22/71
 BOURGHOUS STORCH Date

DEPARTMENT OF PUBLIC WORKS
J. H. Hebebrand 7/7/71
 CHIEF, BUREAU OF HIGHWAYS Date

OFFICE OF PLANNING AND ZONING
J. H. Clauson
 CHIEF, DIVISION OF LAND DEVELOPMENT (TRANSPORTATION)
 PLANNING
 Date 6-30-71

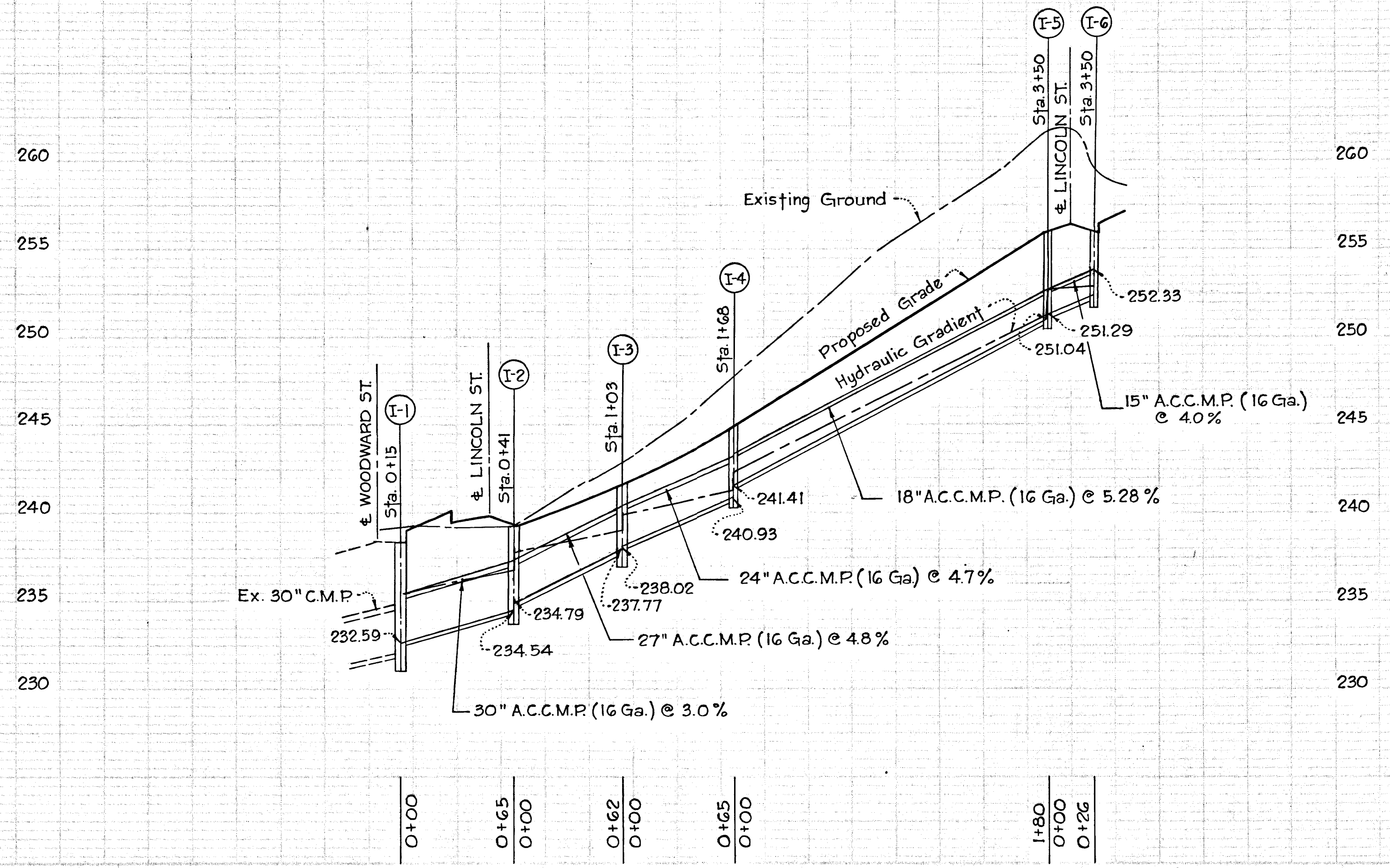
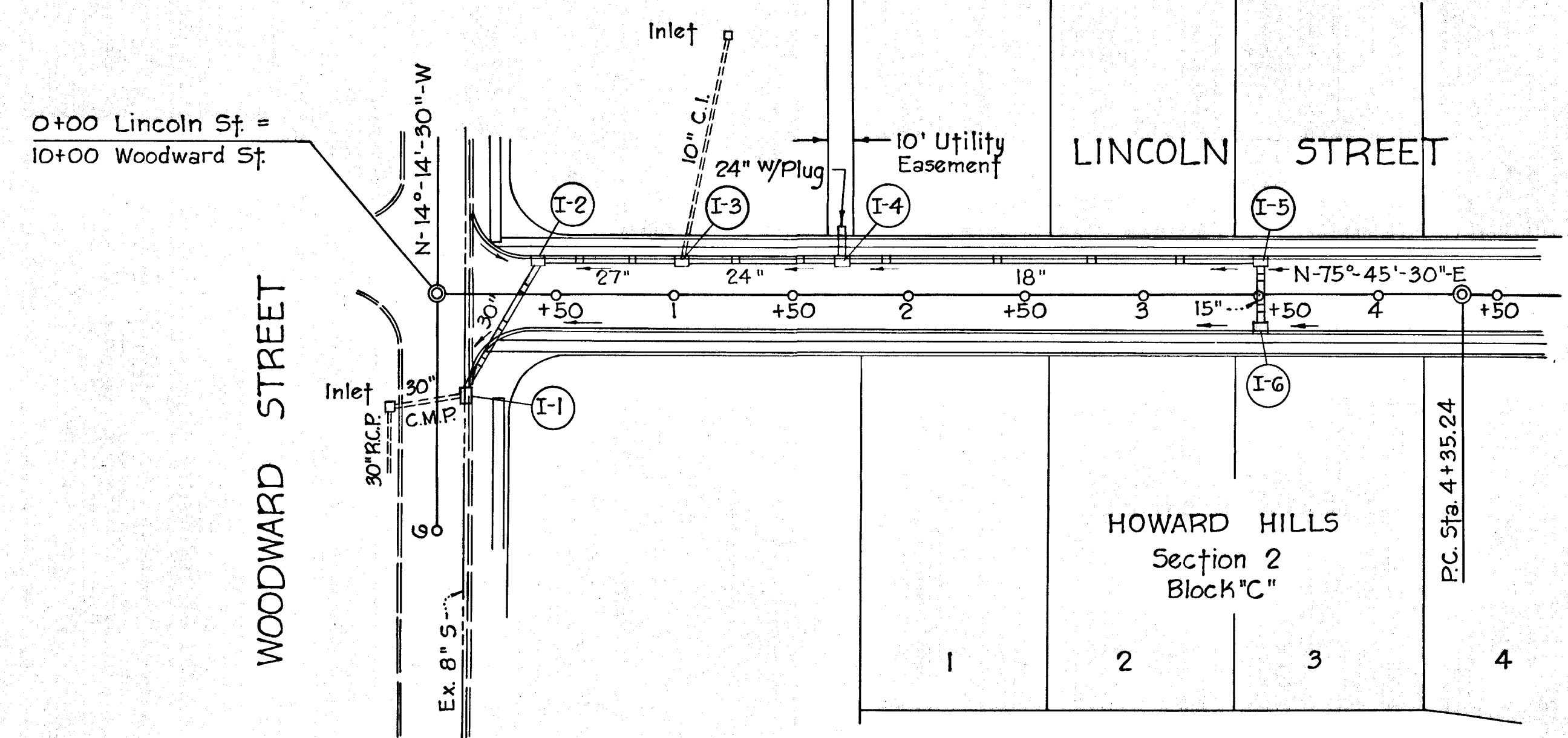
- NOTES:
- Construction To Conform To Road Construction Code And Standard Specification For Howard Co.
 - The Base Will Be Applied To Roadway Area Upon Completion Of Storm Drainage System
 - Reference Is Made To Road Drawing For Lincoln Street, Approved By Howard Co. On March 1, 1971, For Additional Construction Notes.
 - Storm Drainage For Lincoln St. Re-designed At Request Of Owner.



For Std Class S Comb. Inlet
 See Page 154, Drwg. No. D-99

DRAINAGE MAP SCHEDULE					
NO.	Area	"C"	NO.	Area	"C"
A	116 Ac. ±	0.40	E	1.00 Ac. ±	0.40
B	446 Ac. ±	"	F	4.01 Ac. ±	"
C	2.12 Ac. ±	"	G	0.81 Ac. ±	"
D	187 Ac. ±	"			

INLET SCHEDULE				
NO.	TYPE	Q	INV. OUT	TOPELEV.
I-1	"S" Combination	1.9	232.59	236.41
I-2	Dep. Double "S" Comb.	9.1	234.54	239.32
I-3	Dep. "S" Combination	4.5	237.77	241.52
I-4	Dep. "S" Combination	5.0	240.93	244.91
I-5	Dep. Double "S" Comb.	10.0	251.04	255.83
I-6	"S" Combination	2.8	252.33	255.83



SHEET 1 OF 1

GENERAL ENGINEERING CONSULTANTS INC.
 CONSULTING ENGINEERS
 LUTHERVILLE MARYLAND

HOWARD HILLS
 SECTION - I BLOCK A & B
 6TH ELECTION DISTRICT
 HOWARD COUNTY, MARYLAND

SCALE
 Plan: 1" = 50' Profile: Hor: 1" = 50'
 Vert: 1" = 5'

RP226
 #12

