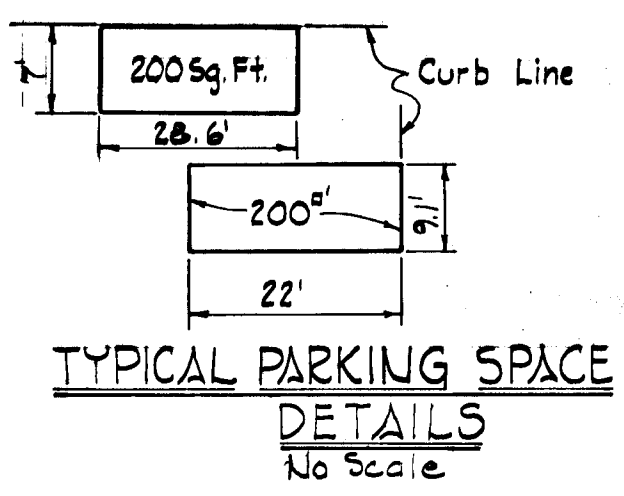


- Notes**
- Existing Mountable Conc. Curb & Gutter to Standard Conc. Curb & Gutter Transition is to be made within a distance of 5'.
 - Remove existing Mountable Curb & Gutter to the joint nearest the P.C. of the Prop. Combination Curb & Gutter.

PLAN
Scale: 1" = 50'

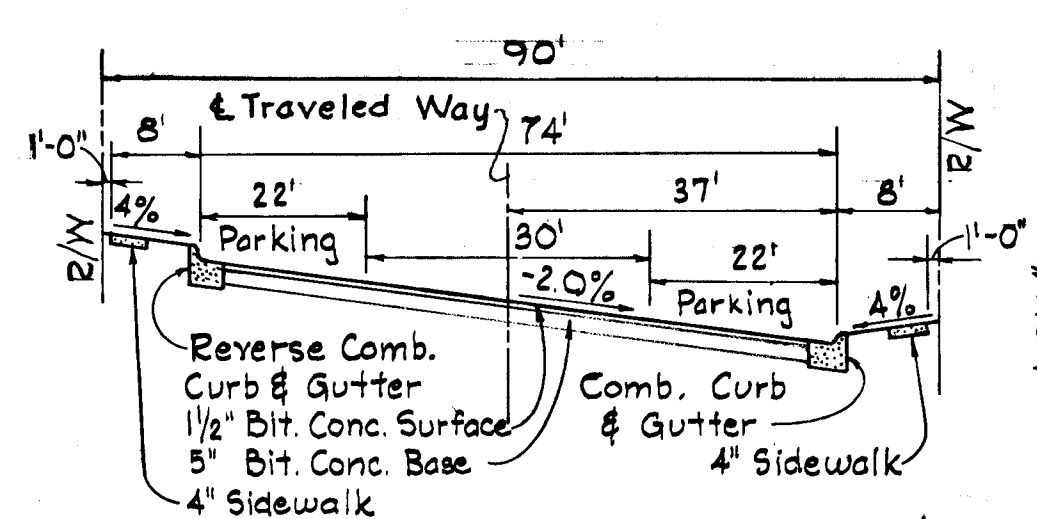
HOWARD HOMES INC.
OWNER AND DEVELOPER
10221 Winopin
Columbia, Maryland

Kenneth A. McCord 2-6-69
KENNETH A. McCORD Date:
Registered Engineer No. 1974
WHITMAN, REQUARDT & ASSOCIATES
ENGINEERS
1304 ST. PAUL STREET
BALTIMORE, MARYLAND

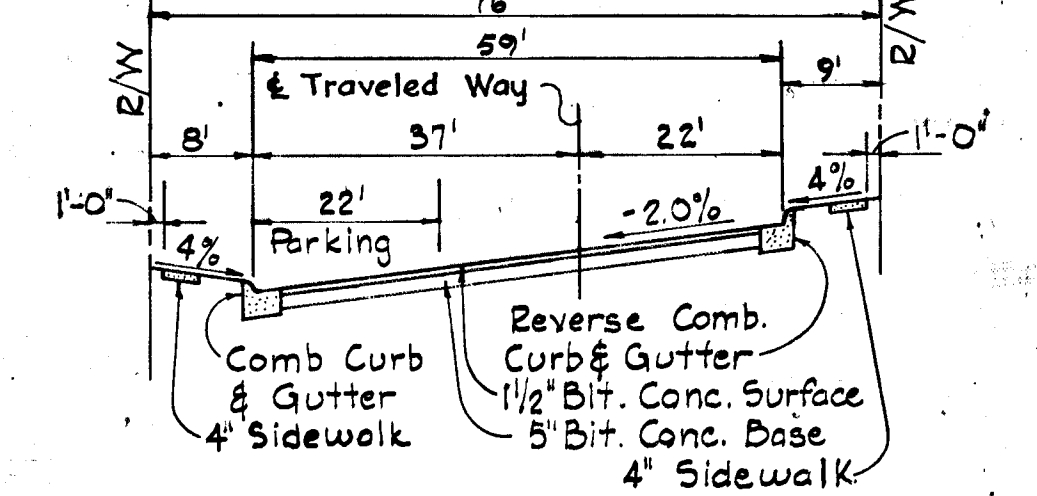


CURVE DATA
P.C. 1+24.66 to P.T. 2+03.74
Δ = 15° 06' 10"
R = 300.00'
L = 79.08'
T = 39.77'
Ch. Brg = 589° 05' 25" E

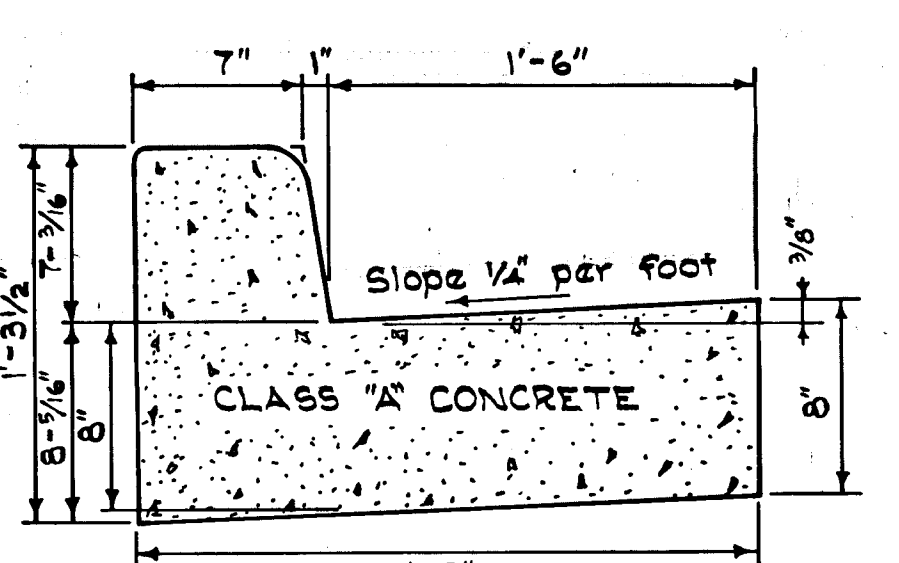
- NOTES:**
- All work to be performed in accordance with the Howard County Road Construction Code and Standard Specifications.
 - Combination Curb & Gutter to be Standard Type unless otherwise noted. (See Drawing D-116, Page 165 f.).
 - Paving thickness shall be 6 1/2" (See Drawing D 114, Page 163 d).



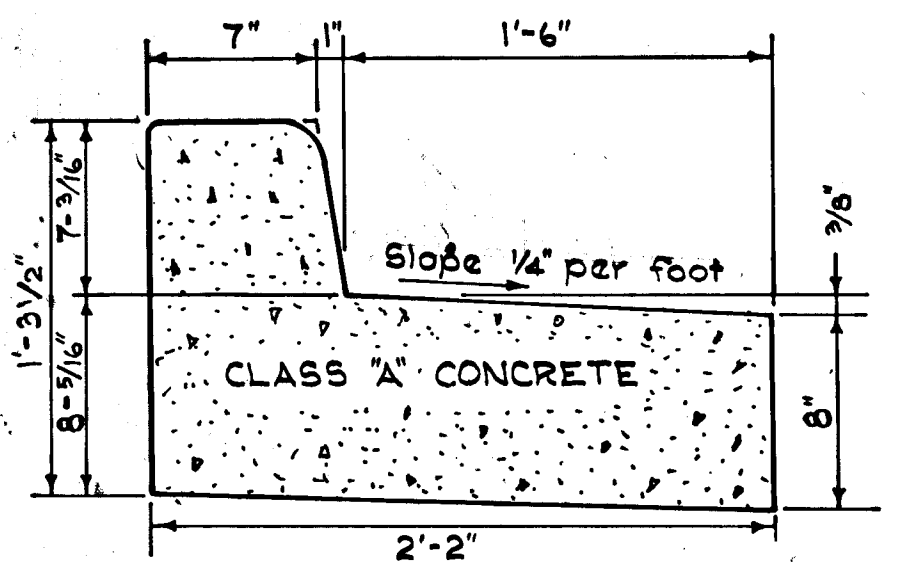
TYPICAL CROSS SECTION HILDEBRAND COURT & FALLRIVER ROW COURT
Sta. 0+79.07 to Sta. 5+17.82
Sta. 0+95.77 to Sta. 1+77.67, Sta. 3+79.43 to Sta. 4+52.28
Sta. 5+27.63 to Sta. 6+91.43



TYPICAL CROSS SECTION FALLRIVER ROW COURT
Sta. 2+64.49 to Sta. 3+06.89



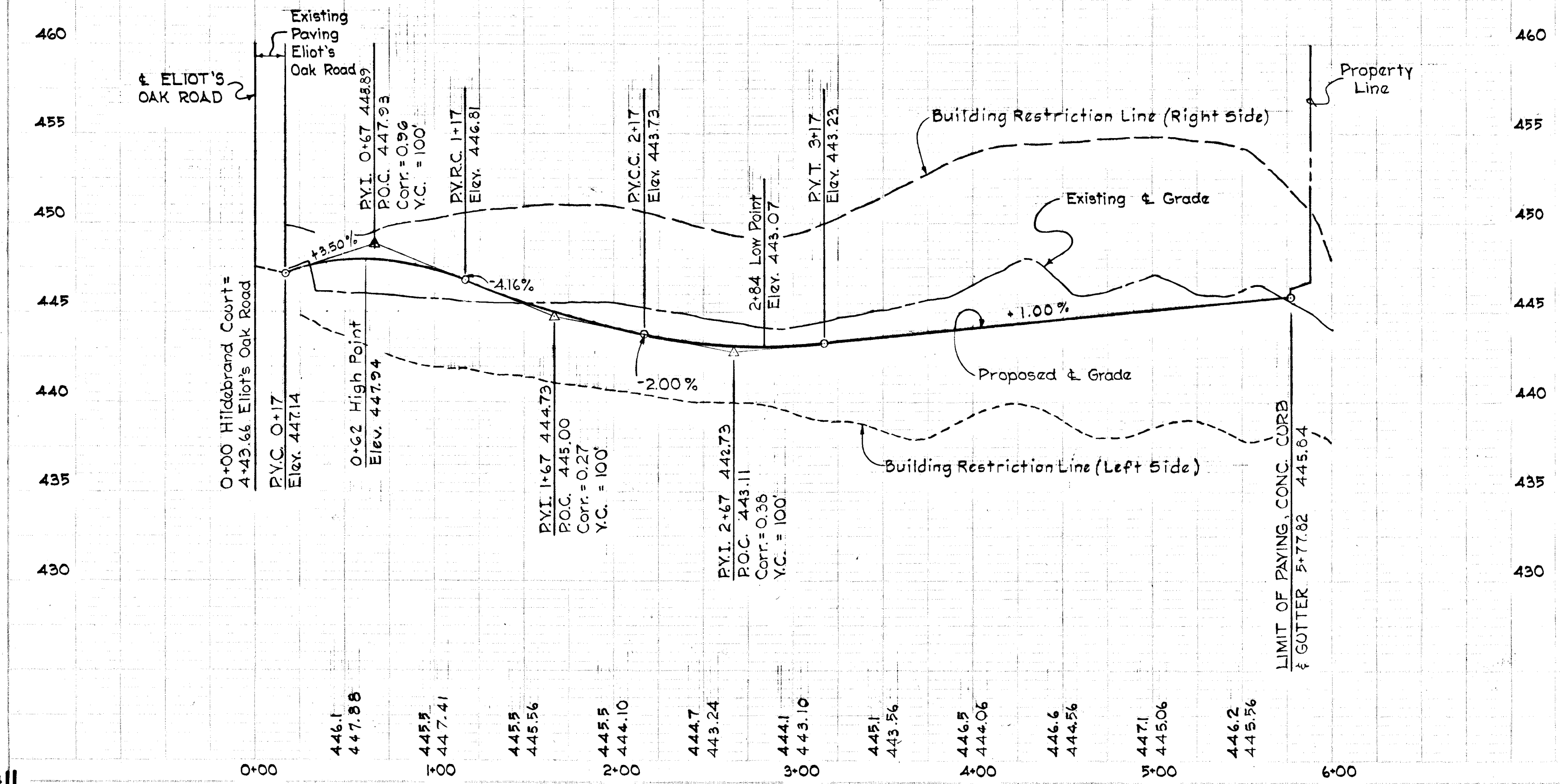
STANDARD COMBINATION CONCRETE CURB & GUTTER
No Scale

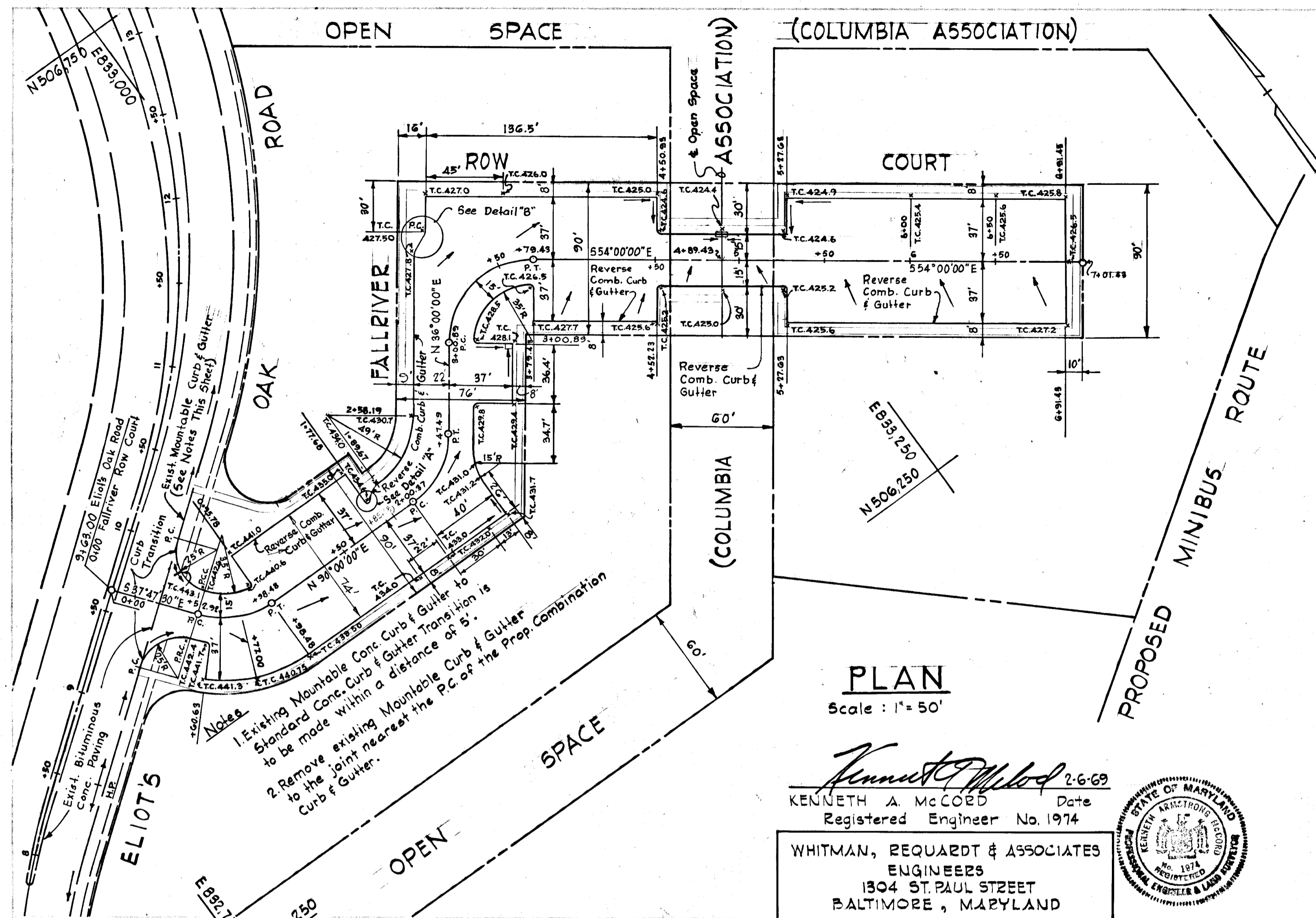


REVERSE COMBINATION CONCRETE CURB & GUTTER
No Scale

DEPARTMENT OF PUBLIC WORKS
Graville N. Weiland 4-7-69
CHIEF, BUREAU OF HIGHWAYS DATE
OFFICE OF PLANNING AND ZONING
J. H. Clowry 4-9-69
CHIEF ENGINEER, DIVISION OF LAND DEVELOPMENT DATE

REV.	DATE	NO.	DESCRIPTION
			COLUMBIA ELECTION DISTRICT No 5 HOWARD COUNTY, MARYLAND
			VILLAGE OF HARPER CHOICE SECTION 3, AREA 2
			RESUBDIVISION OF LOTS #2, 3 & 4
			ROAD GRADES HILDEBRAND COURT
Scale:	As. Shown	Date:	Feb. 7, 1969
Dwg No.	1 of 3		



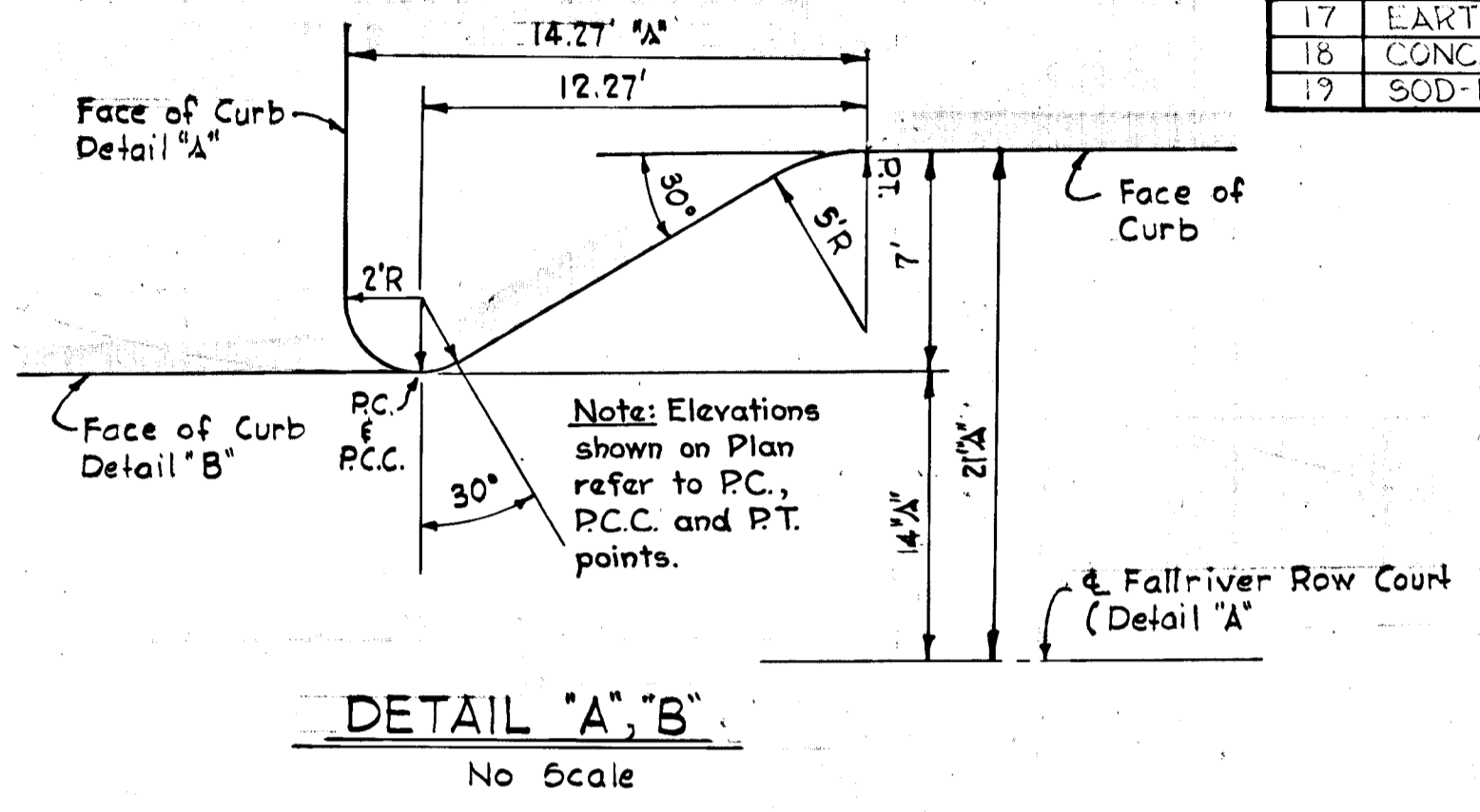


Curve Data

PC: 0+57.92 To PT: 0+98.48
 $\Delta = 52^\circ 12' 30''$
 $R = 50.00'$
 $L = 45.56'$
 $T = 24.50'$
 $Chd. = 44.00'$
 $Chd. Brg. = S63^\circ 59' 46'' E$

PC: 2+00.37 To PT: 2+47.49
 $\Delta = 54^\circ 00' 00''$
 $R = 50.00'$
 $L = 47.12'$
 $T = 25.48'$
 $Chd. = 70.71'$
 $Chd. Brg. = N80^\circ 59' 59'' E$

PC: 3+00.89 To PT: 3+79.43
 $\Delta = 90^\circ 00' 00''$
 $R = 50.00'$
 $L = 78.54'$
 $T = 50.00'$
 $Chd. = 45.40'$
 $Chd. Brg. = N62^\circ 59' 59'' E$



ESTIMATE OF QUANTITIES				
ITEM	DESCRIPTION	UNIT	QUANTITIES	
1	BIT. CONC. SURFACE COURSE 1 1/2" TH.	S.Y.	7,780	
2	BIT. CONC. BASE COURSE 5" TH.	S.Y.	7,780	
3	COMB. CURB AND GUTTER	L.F.	3,110	
4	PLACING TOPSOIL	S.Y.	1,920	
5	EARTH EXCAVATION (ROADWAY)	C.Y.	12,300	
6	CONC. SIDEWALK 4" TH.	S.Y.	1,200	
7	15" CL. IV RCP	L.F.	397	
8	24" CL. IV RCP	L.F.	126	
9	54" CL. IV RCP	L.F.	68	
10	TYPE 'E' COMB. INLET	E.A.	3	
11	TYPE 'S' COMB. INLET (DOUBLE GRATE)	E.A.	1	
12	TYPE 'K' INLET WITH TYPE 'A' GRATE	E.A.	1	
13	TYPE 'A' MANHOLE	E.A.	1	
14	TYPE 'B' MANHOLE (SHALLOW)	E.A.	2	
15	21" TYPE 'C' ENDWALL	E.A.	1	
16	54" TYPE 'B' ENDWALL	E.A.	2	
17	EARTH EXCAVATION (DRAINAGE DITCHES)	C.Y.	330	
18	CONC. PAVING (DRAINAGE DITCHES) 5" TH.	S.Y.	75	
19	SOD DRAINAGE DITCHES	S.Y.	390	

PLAN
 Scale: 1" = 50'

Kenneth A. McCord 2-6-69
 KENNETH A. MCCORD Date
 Registered Engineer No. 1974

WHITMAN, REQUARDT & ASSOCIATES
 ENGINEERS
 1304 ST. PAUL STREET
 BALTIMORE, MARYLAND

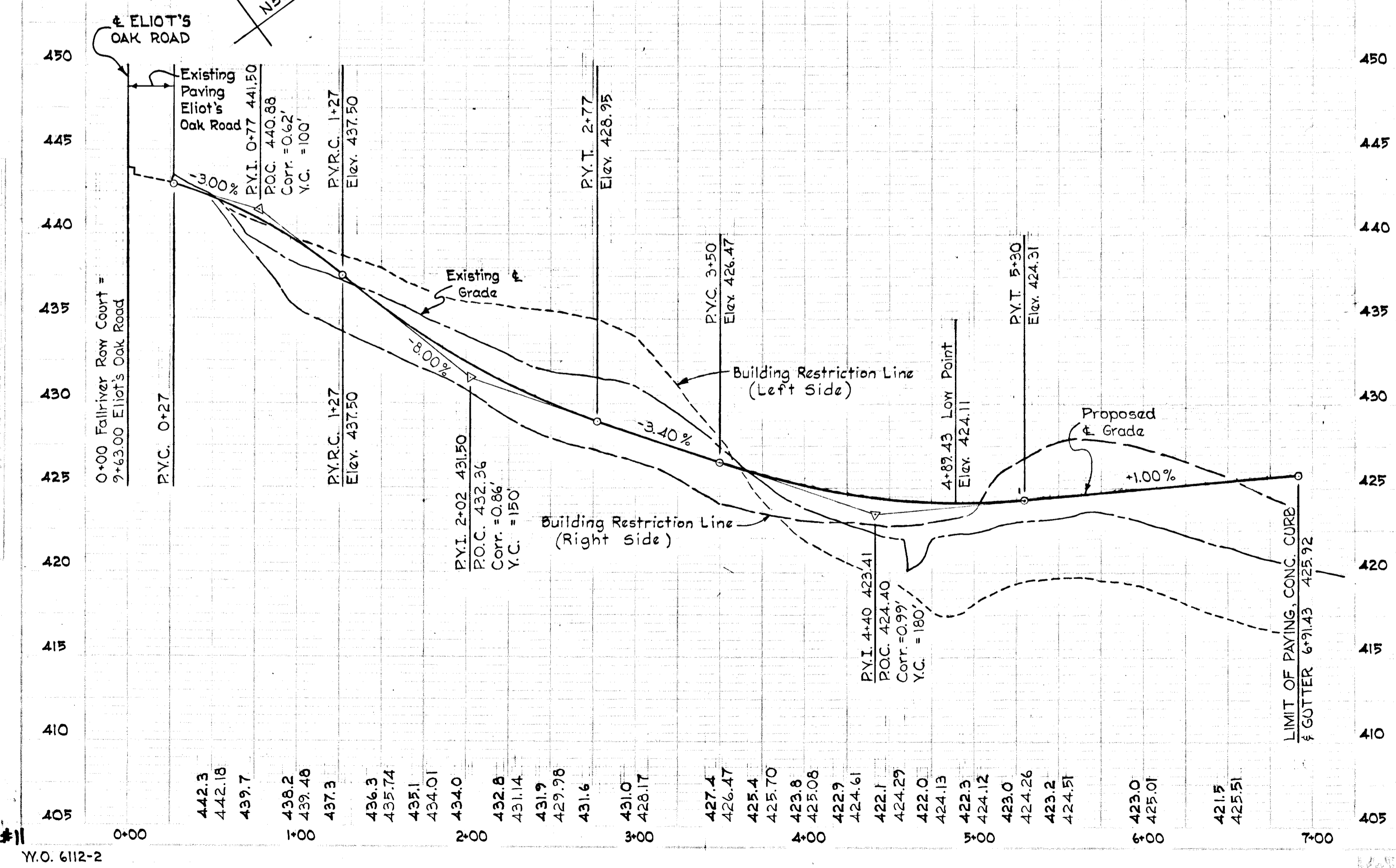


HOWARD HOMES INC.
 OWNER AND DEVELOPER
 10221 Wincopin
 Columbia, Maryland

DEPARTMENT OF PUBLIC WORKS
Brunswick N. McLeod 4-7-69
 CHIEF BUREAU OF HIGHWAYS DATE
 OFFICE OF PLANNING AND ZONING
J.H. Clawson 4-9-69
 CHIEF ENGINEER, DIVISION OF LAND DEVELOPMENT DATE

REV. DATE	No.	DESCRIPTION
		COLUMBIA ELECTION DISTRICT - No 5 HOWARD COUNTY, MARYLAND
		VILLAGE OF HARPERS CHOICE SECTION 3, AREA 2
		RESUBDIVISION OF LOTS #2B, 3, #4
		ROAD GRADES
		FALLRIVER ROW COURT

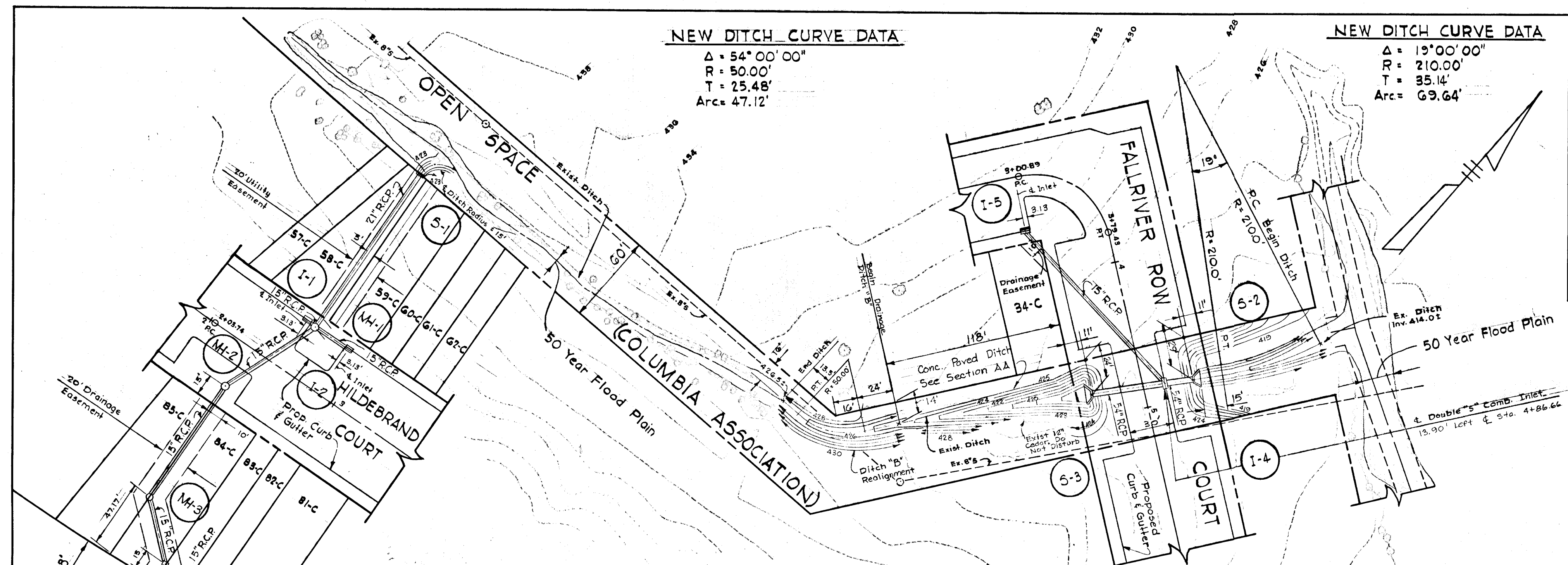
Scale: As Shown Date Feb. 7, 1969 Dwg No. 2 of 3



W.O. 6112-2

March 13, 1969

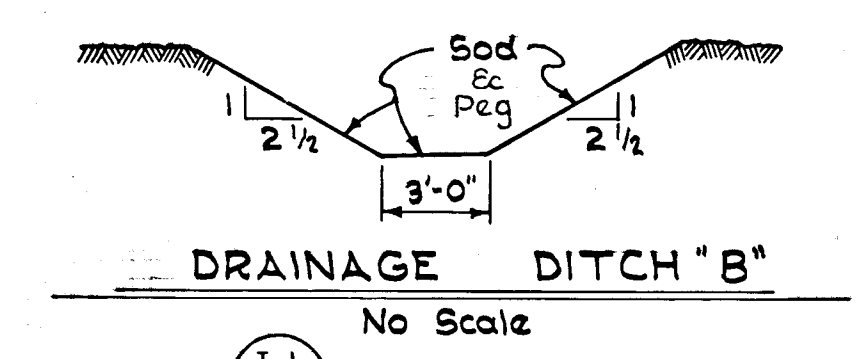
F-69-04



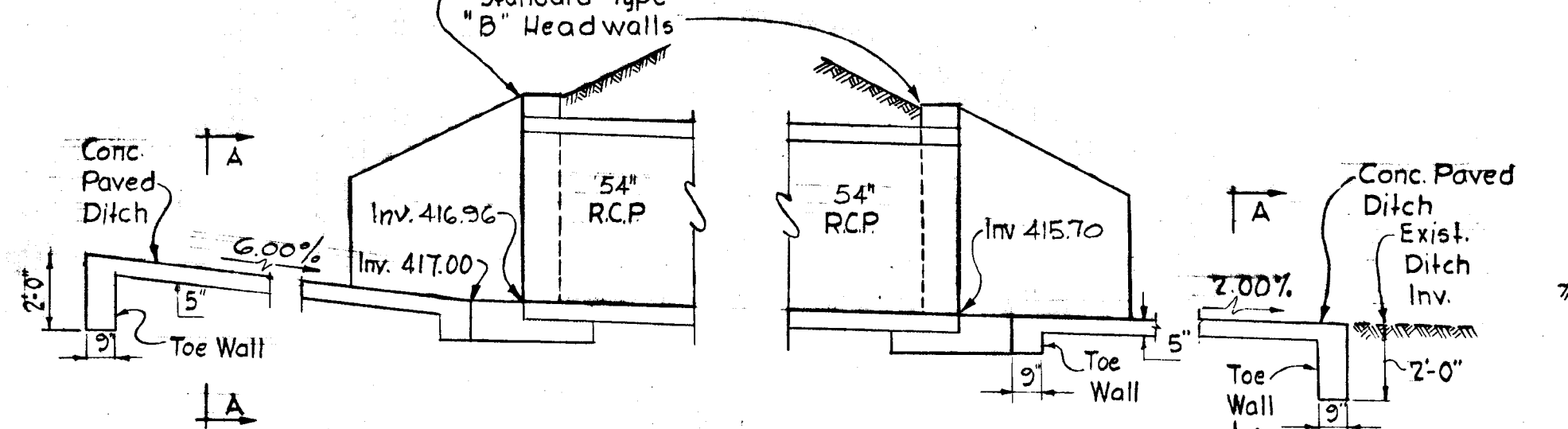
NEW DITCH CURVE DATA
 $\Delta = 54^{\circ}00'00''$
 $R = 50.00'$
 $T = 25.48'$
 $\text{Arcs} = 47.12'$

NEW DITCH CURVE DATA
 $\Delta = 15^{\circ}00'00''$
 $R = 210.00'$
 $T = 35.14'$
 $\text{Arc} = 69.64'$

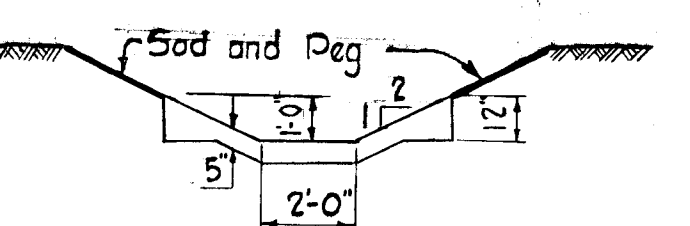
STRUCTURE SCHEDULE					
NO	TYPE	TOP ELEV	INV. OUT	REMARKS	
I-1	"E" COMB INLET	443.10	436.19	Dwg. D-68, Page 123	
I-2	"E" COMB INLET	442.90	437.51	Dwg. D-68, Page 123	
I-3	"K" INLET ("A" GRATE)	454.83	450.43	Dwg. D-93, Page 148	
I-4	"S" COMB INLET ("A" GRATE)	424.40	415.74	Dwg. D-99, Page 154	
I-5	"E" COMB INLET	428.10	422.74	Dwg. D-68, Page 123	
MH-1	"A" MANHOLE	443.07	434.89	Dwg. D-103, Page 158	
MH-2	"B" MANHOLE (SHALLOW)	444.65	440.39		
MH-3	"B" MANHOLE (SHALLOW)	446.50	442.58	with Inlet Grate Top	
S-1	C ENDWALL - 21"	438.36	430.86	Dwg. D-52, Page 107	
S-2	B ENDWALL - 54"	421.20	415.70	Dwg. D-48, Page 103	
S-3	B ENDWALL - 54"	422.46	416.96	Dwg. D-48, Page 103	



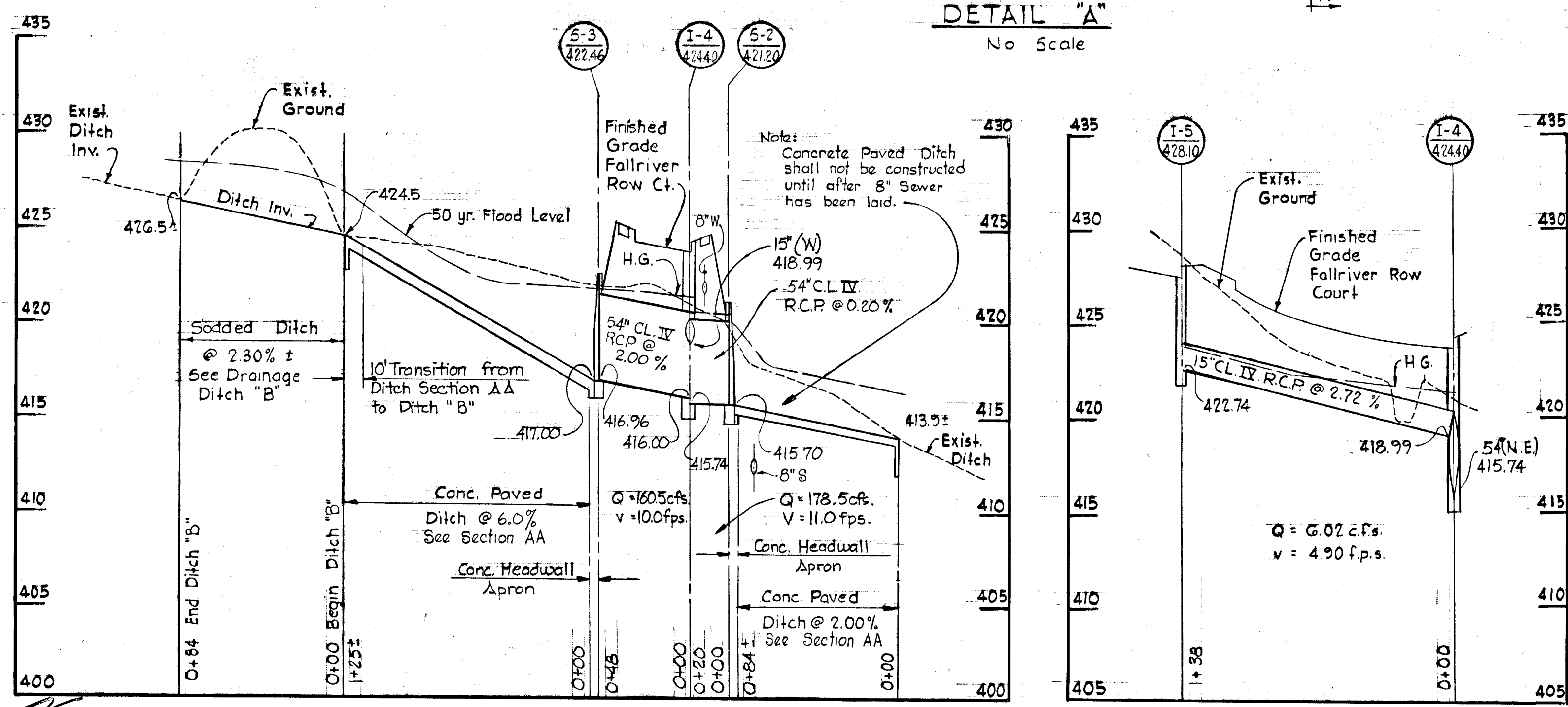
PLAN
 Scale: 1" = 50'



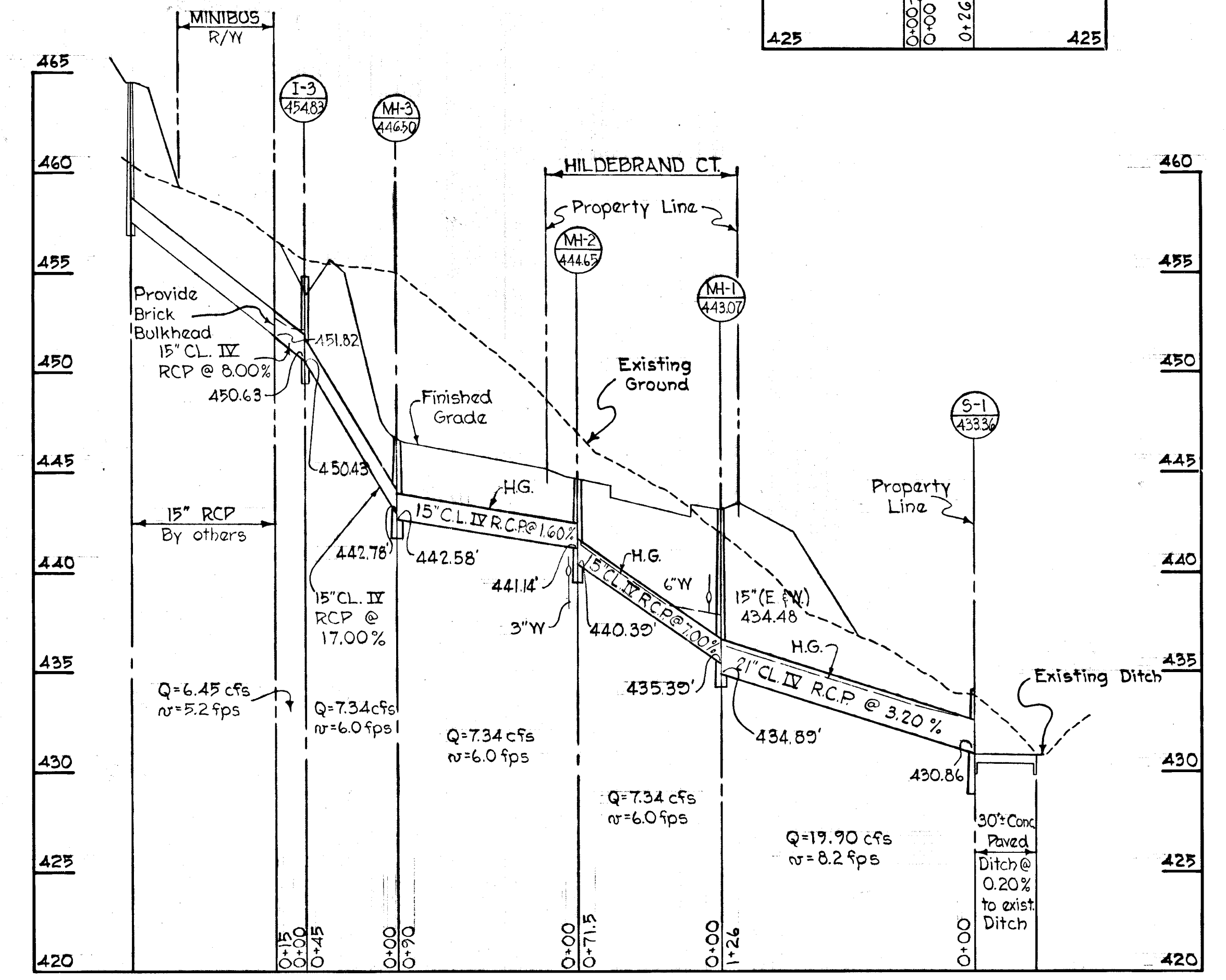
DETAIL "A"
 No Scale



SECTION A-A
 No Scale



PROFILE 5
 Scale: Hor. 1" = 5'
 Vert. 1" = 50'



Rev.	Date	No.	Description
			COLUMBIA ELECTION DISTRICT NO 5 HOYARD COUNTY, MARYLAND
			VILLAGE OF HARPERS CHOICE SECTION 3, AREA 2 RESUBDIVISION OF LOTS 2B, 3 & 4
			STORM DRAINS FALLRIVER ROW AND HILDEBRAND COURT
			Scale: As Shown Date: Feb. 7, 1969 Dwg. No. 3 of 3

WHITMAN, REQUARDT & ASSOCIATES
 ENGINEERS
 1304 ST. PAUL STREET
 BALTIMORE, MARYLAND



DEPARTMENT OF PUBLIC WORKS
Graville M. Maland 4-7-69
 CHIEF, BUREAU OF HIGHWAYS. DATE
J. H. Clawson 4-9-69
 CHIEF ENGINEER, DIVISION OF LAND DEVELOPMENT DATE