

Curve Data  
 R=300.00'  
 L=158.33'  
 Δ=30°14'22"  
 T=81.06'  
 L.Ch.=N65°20'57"E  
 =156.50'

PLAN  
 Scale: 1"=50'

Curve Data for E Channel  
 R=350.00'  
 Dc=16°22'13"  
 L=116.07'  
 Δ=19°00'00"  
 T=58.57'

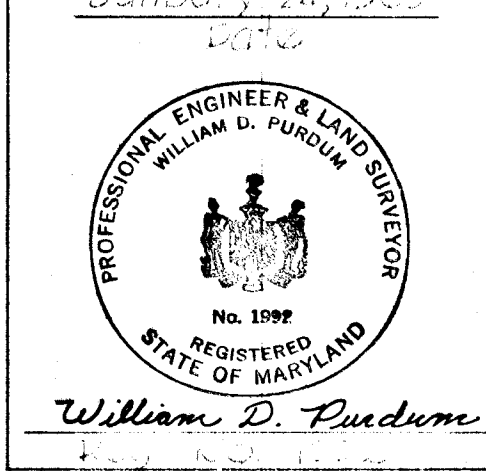
OWNER & DEVELOPER  
 PATUXENT PARK DEVELOPMENT CORP.  
 GLENWOOD, MARYLAND

APPROVED: DEPARTMENT OF PUBLIC WORKS  
*Granville H. Welland* 5-8-69  
 CHIEF, BUREAU OF HIGHWAYS DATE

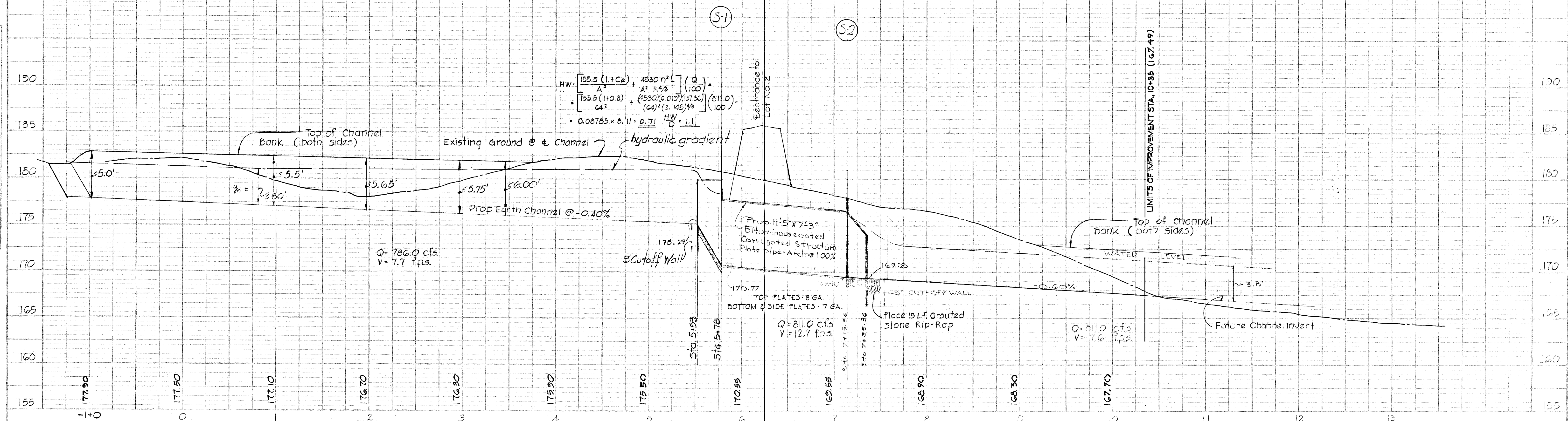
APPROVED: OFFICE OF PLANNING AND ZONING  
*J. H. Clawson* 5-8-69  
 CHIEF ENGINEER, DIVISION OF LAND DEVELOPMENT DATE

PROPOSED CHANNEL  
 PATUXENT PARK INDUSTRIAL AREA  
 SECTION # 2

1023 N. CALVERT ST. BALTIMORE, MARYLAND  
 6TH ELECTION DISTRICT - HOWARD CO. MARYLAND  
 JANUARY 23, 1969  
 REVISION: APRIL 11, 1969 SHEET NO. 2 OF 3



PROFILE  
 Scale: Vert. 1"=5'  
 Horiz. 1"=50'



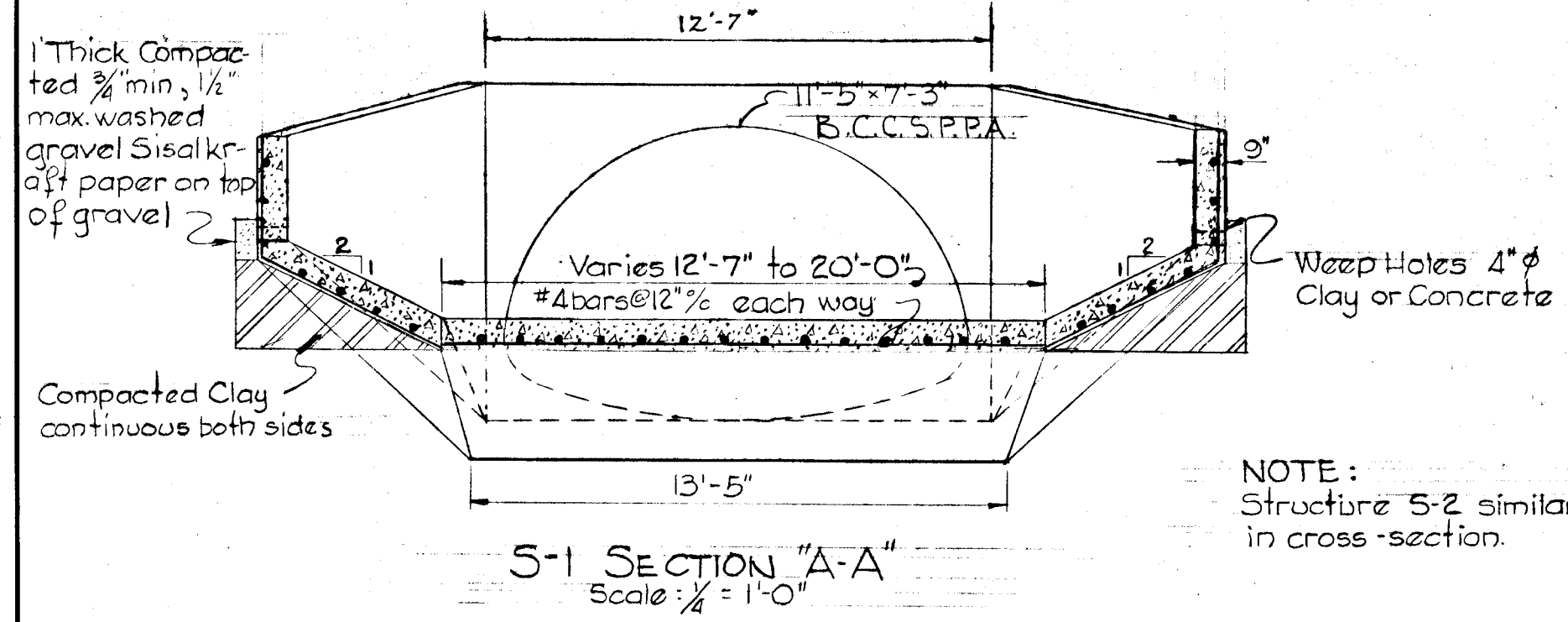
$$HW = \left[ \frac{155.5 (1+C_2)}{A^2} + \frac{4530 n^2 L}{A^2 R^{4/3}} \right] \left( \frac{Q}{100} \right)^2$$

$$= \left[ \frac{155.5 (1+0.8)}{64^2} + \frac{4530 (0.015)^2 (157.36)}{(64)^2 (2.145)^{4/3}} \right] \left( \frac{811.0}{100} \right)^2$$

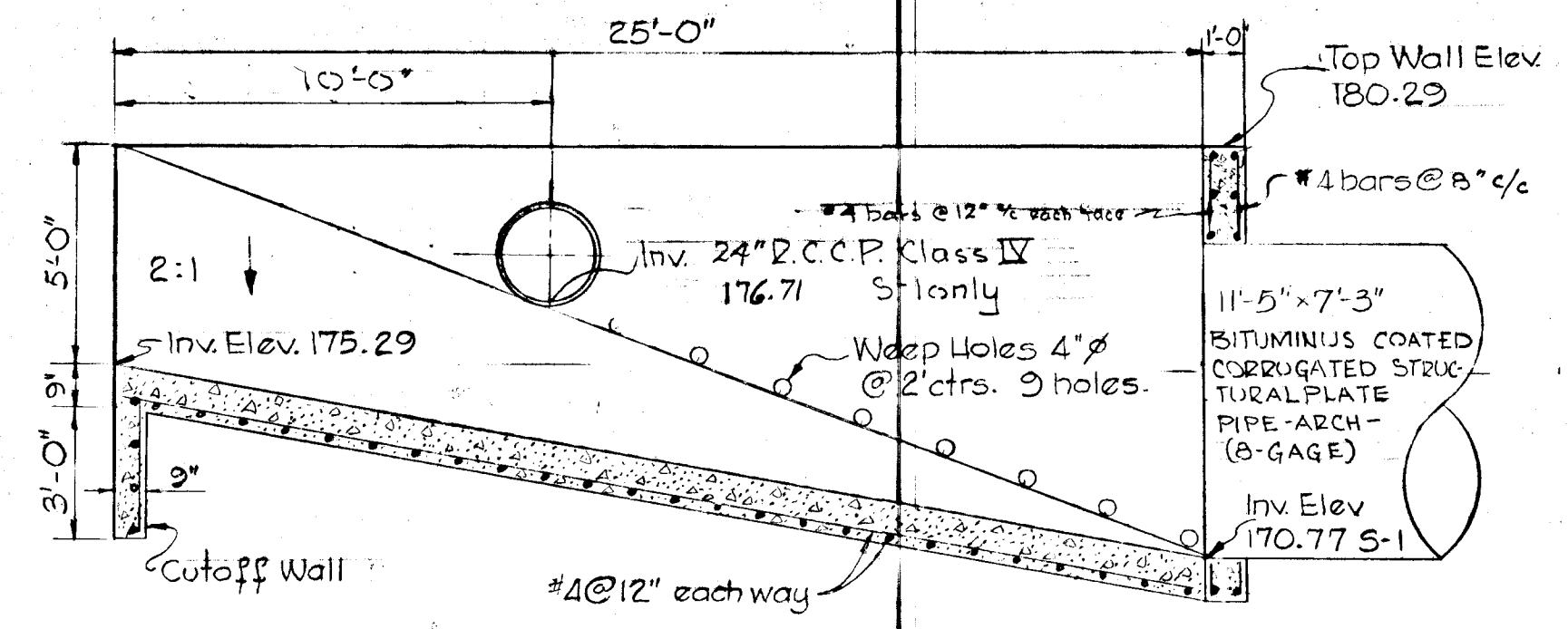
$$= 0.08765 \times 8.11 = 0.71 \quad \frac{HW}{D} = 1.1$$

#105 W.O. D-237 14

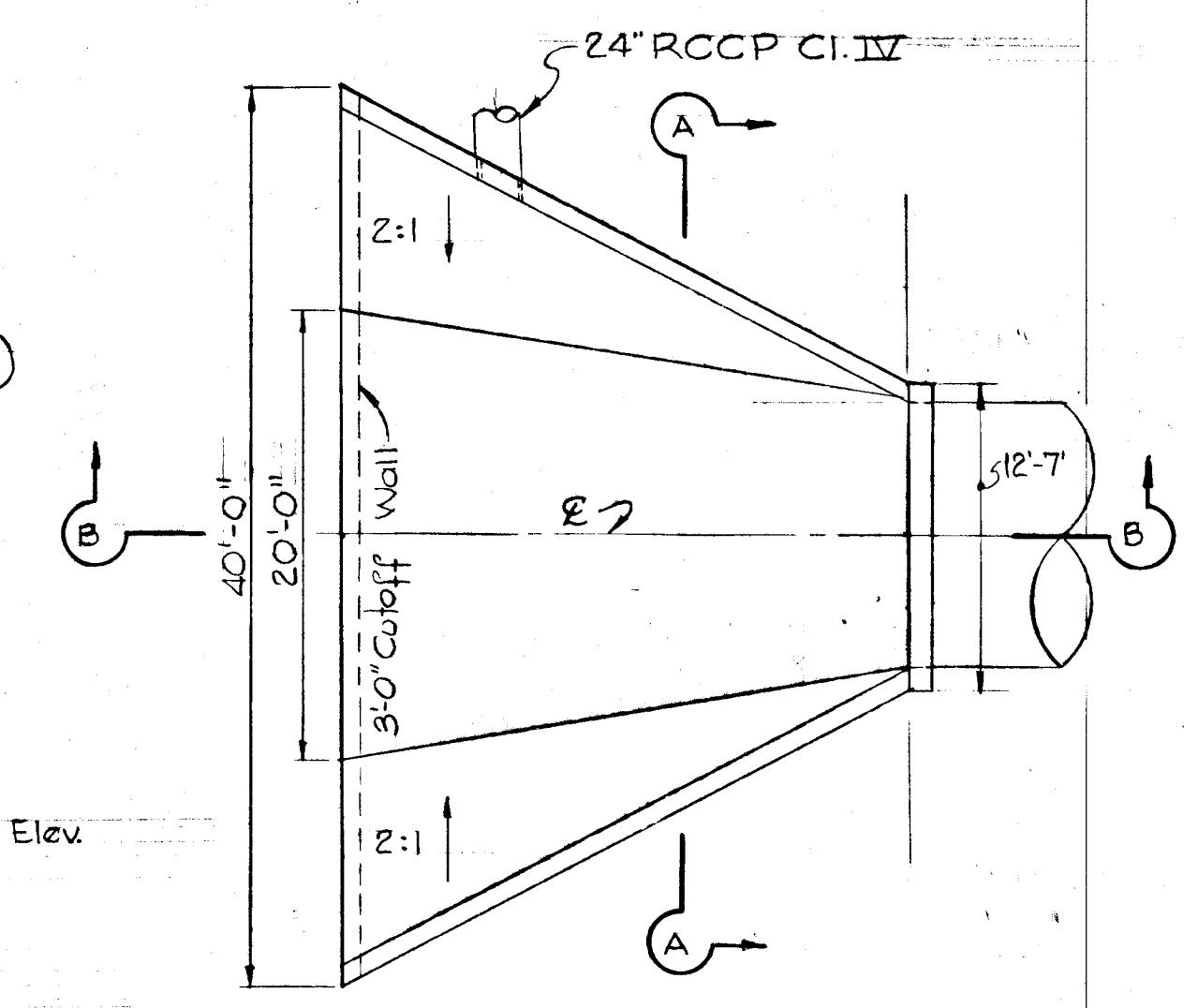
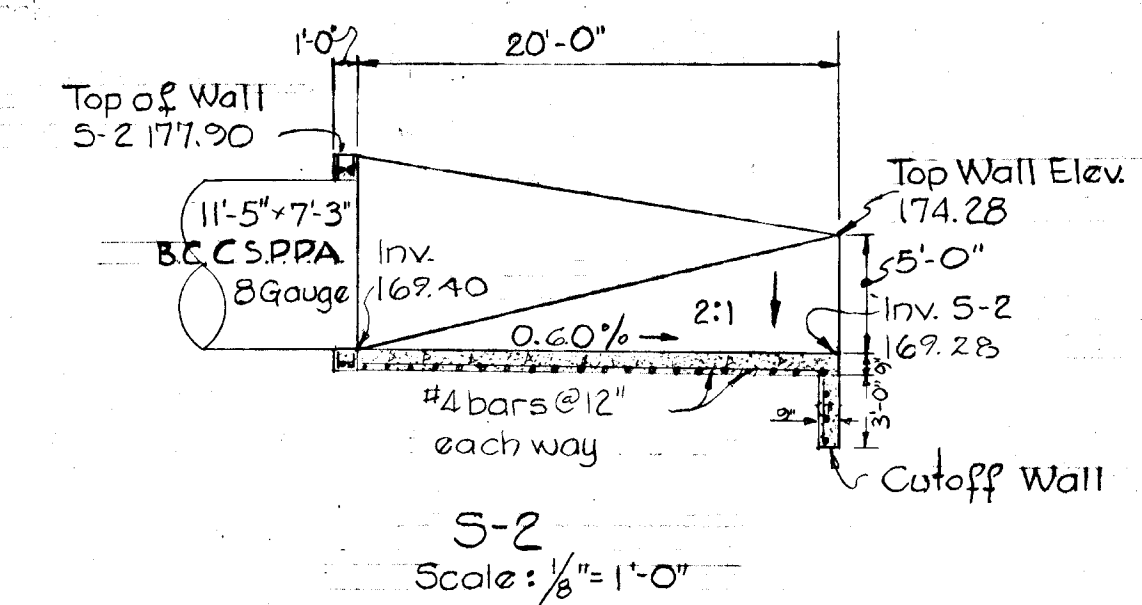
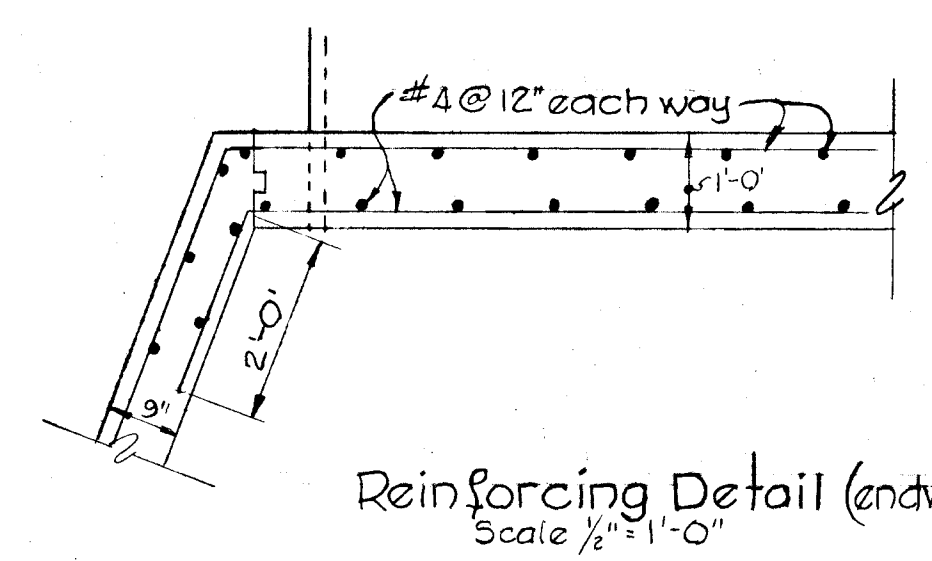




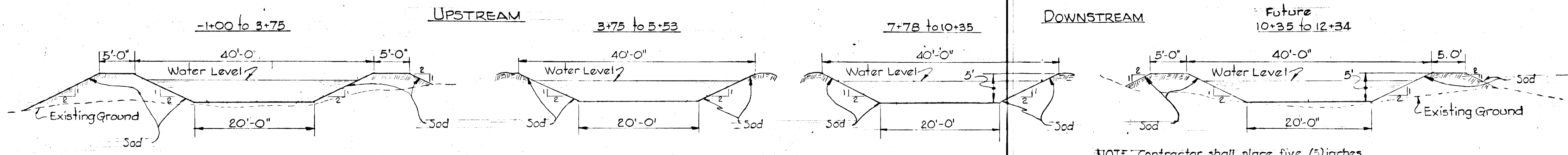
NOTE: Structure 5-2 similar in cross-section.



STRUCTURE NOS. 5-1 & 5-2



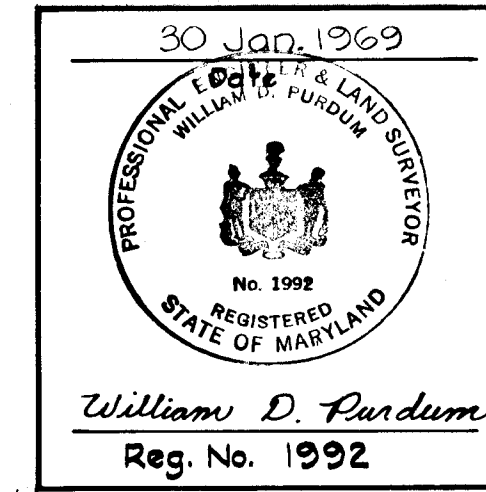
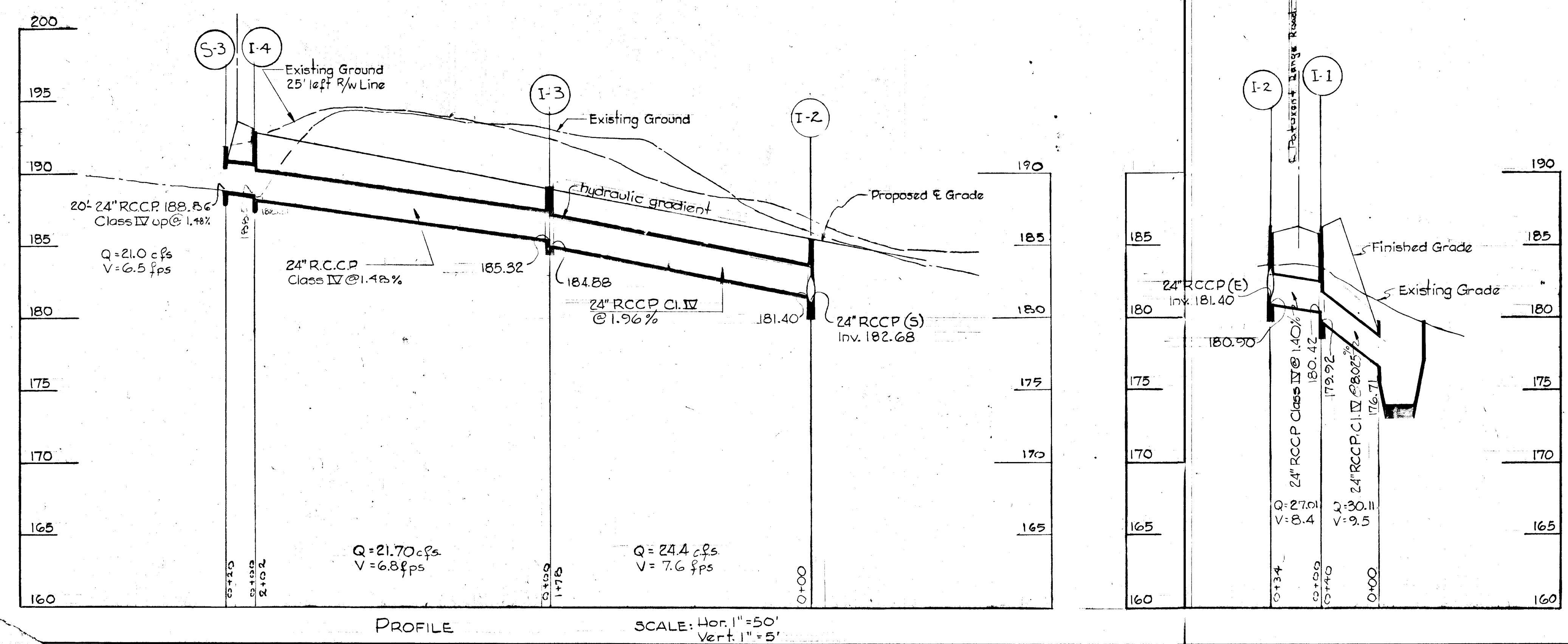
| STRUCTURE SCHEDULE |                 |      |        |           |
|--------------------|-----------------|------|--------|-----------|
| NO.                | TYPE            | Q    | INVERT | TOP ELEV. |
| I-4                | 1' Comb         | 1.0  | 188.31 | 193.12    |
| I-3                | 1' Comb         | 3.54 | 185.07 | 189.13    |
| I-2                | 1' Comb         | 3.58 | 182.63 | 185.65    |
| I-1                | 1' Comb         | 3.57 | 181.95 | 185.65    |
| S-3                | Type F Headwall | —    | 188.31 | 191.90    |
| S-1                | Special         | —    | 170.77 | 180.29    |
| S-2                | Special         | —    | 169.40 | 177.90    |



NOTE: Contractor shall place five (5) inches of topsoil and sod for full width of channel. Sod shall be pegged on bottom & side slopes of channel.

GENERAL NOTES

- For details of Standard Curb & Gutter, see Dwg. D-40, page 95 of Howard County Road Construction Code.
- For details of Temporary Tee Turnaround, see Dwg. D-33 page 88 of Howard County Road Construction Code.
- For details of Type "F" Headwall, see Dwg. D-56, page 111 of Howard County Road Construction Code.
- For details of type "E" Inlet, see Dwg. D-68 page 123 of Howard County Road Construction Code.
- Use minimum 2' clear cover for all reinforcing bars.
- S.R.C. Class "A" Concrete with minimum  $f_c' = 3000$  psi.
- Chamfer all exposed edges of concrete 1" x 1".
- Use deformed steel throughout.
- All construction shown hereon shall be in accordance with the Howard County Road Construction Code and Standard Specifications dated November 27, 1962, and revised August, 1968.



|   |  |
|---|--|
| OWNER & DEVELOPER<br><b>PATUXENT PARK DEVELOPMENT CORP.</b><br>GLENWOOD, MARYLAND           | APPROVED: DEPARTMENT OF PUBLIC WORKS<br><i>Francis M. Ireland</i> 5-8-69<br>CHIEF, BUREAU OF HIGHWAYS DATE               |
|   | APPROVED: OFFICE OF PLANNING AND ZONING<br><i>J.H. Clary</i> 5-8-69<br>CHIEF ENGINEER, DIVISION OF LAND DEVELOPMENT DATE |
| PURDUM & JESCHKE<br>ENGINEERS and LAND SURVEYORS<br>1023 N. CALVERT ST. BALTIMORE, MARYLAND | DETAIL SHEET<br><b>PATUXENT PARK INDUSTRIAL AREA</b><br>SECTION #2   |
|   | 6th ELECTION DISTRICT HOWARD COUNTY, MARYLAND<br>Scale: As Shown<br>REVISED: APRIL 11, 1962 Sheet No. 3 of 3             |