

COLUMBIA

ELECTION DISTRICT 5

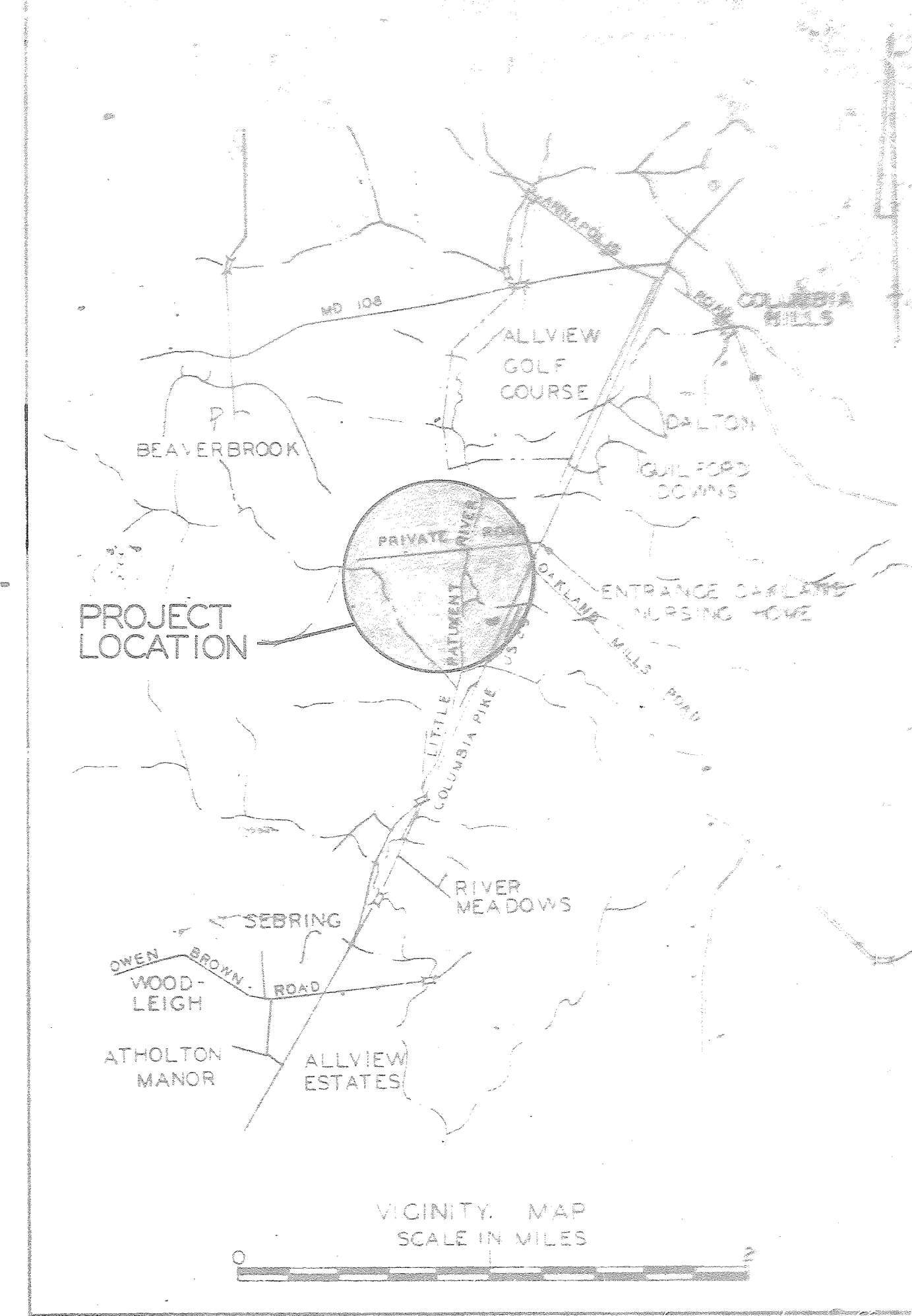
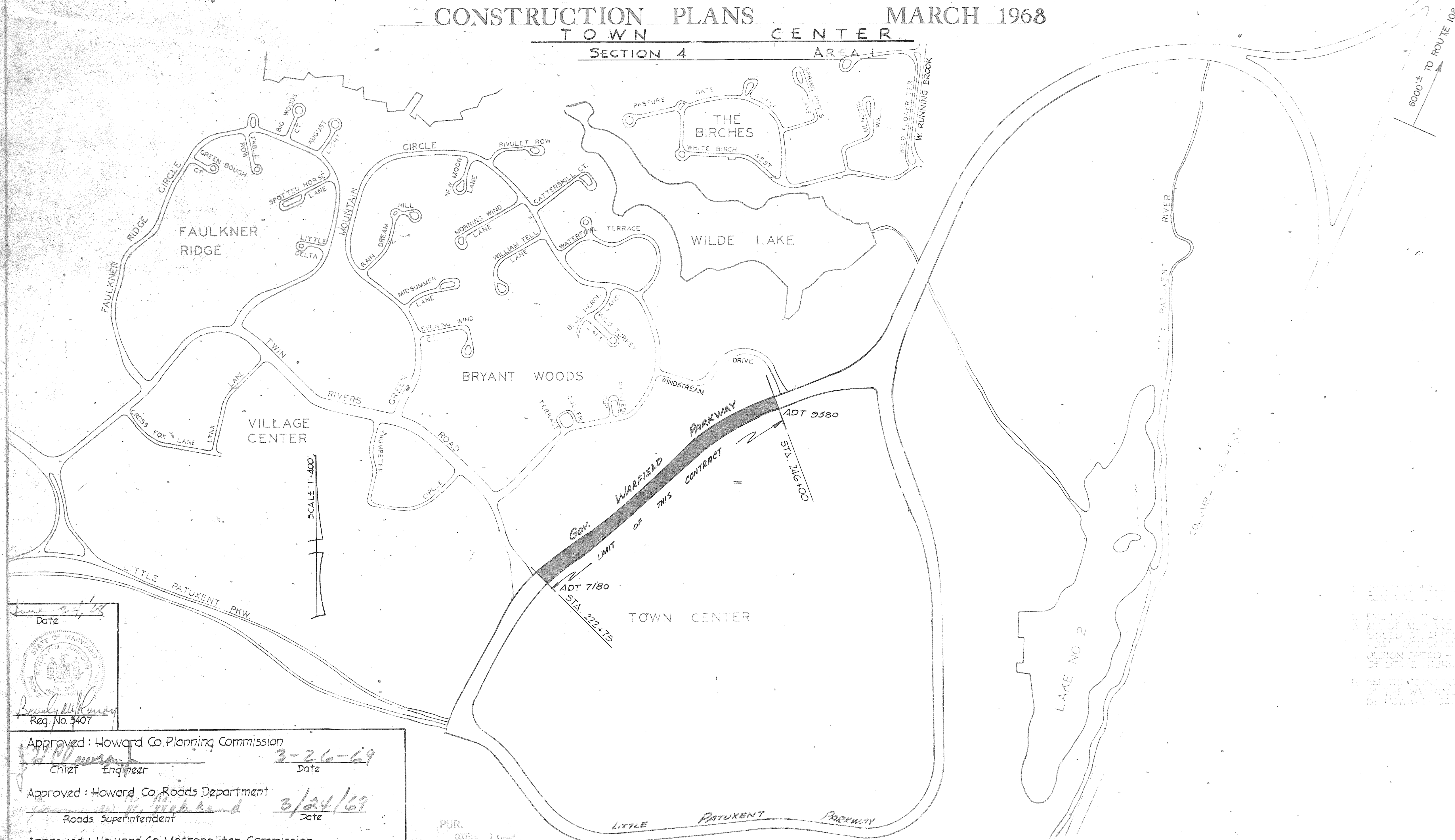
GOVERNOR WARFIELD PARKWAY ROADWAYS - DRAINAGE

HOWARD RESEARCH & DEVELOPMENT CORP.

HOWARD COUNTY, MARYLAND

CONSTRUCTION PLANS MARCH 1968

TOWN CENTER
SECTION 4 AREA



INDEX	
SHEET NO.	DESCRIPTION
224	
234	
244	
254	

Date: 3-24-68

Approved: Howard Co. Planning Commission
 Chief Engineer: [Signature] Date: 3-26-69

Approved: Howard Co. Roads Department
 Roads Superintendent: [Signature] Date: 3/24/69

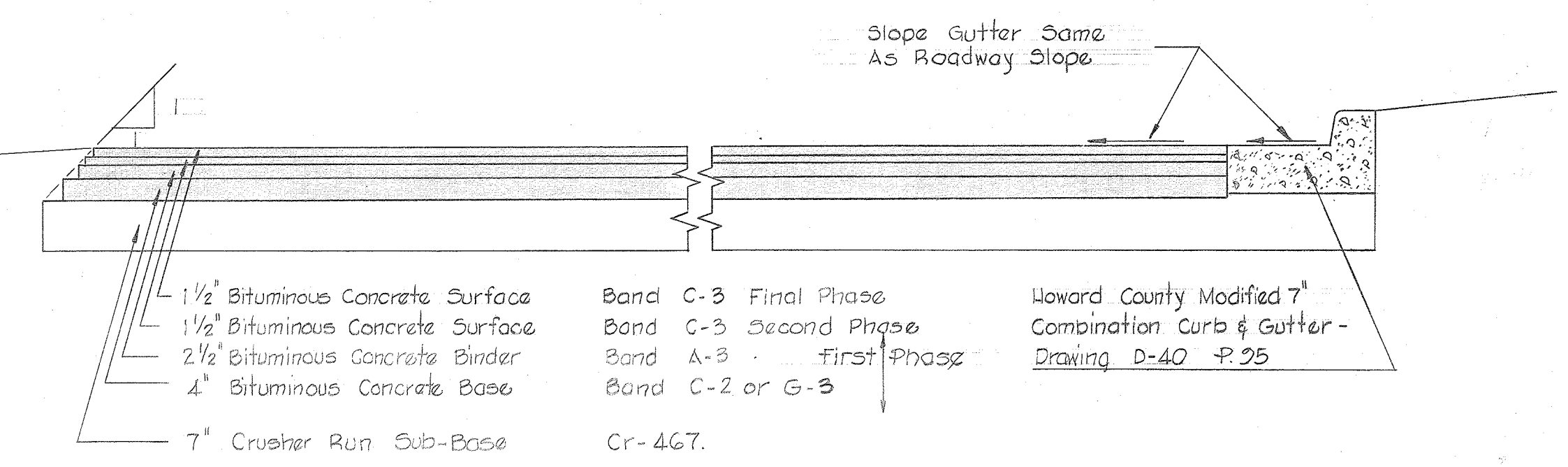
Approved: Howard Co. Metropolitan Commission
 Chief Engineer: [Signature] Date: 3-26-69

PUR.
 CONSULTING ENGINEERS
 1023 NORTH CALVERT STREET
 BALTIMORE, MARYLAND 21202

1. THIS PLAN SHALL BE USED FOR THE PURPOSES AND NOTHING AT NO COST TO THE COUNTY.
2. ENGINEERING CONTRACT NO. 100101-1-1-68, ESTABLISHED BY J.A. 1968.
3. ALL OF THIS PLAN SHALL BE SUBJECT TO THE "STANDARD SPECIFICATIONS" ADOPTED AND APPROVED BY THE COUNTY COMMISSIONERS OF THE HOWARD COUNTY LOCAL DEPARTMENT.
4. DESIGN SPEED - 50 MPH. THIS PLAN SHALL BE IN ACCORDANCE WITH AMERICAN ASSOCIATION OF STATE HIGHWAY OFFICIAL STANDARDS.
5. SEE THE CONSTRUCTION SPECIFICATIONS FOR GOVERNOR WARFIELD PARKWAY FOR DETAILS OF THE WASHINGTON TYPE "B" MANHOLE, WASHINGTON TYPE "B" INLET, APPROVED BY HOWARD COUNTY DATED JUNE 14, 1967.

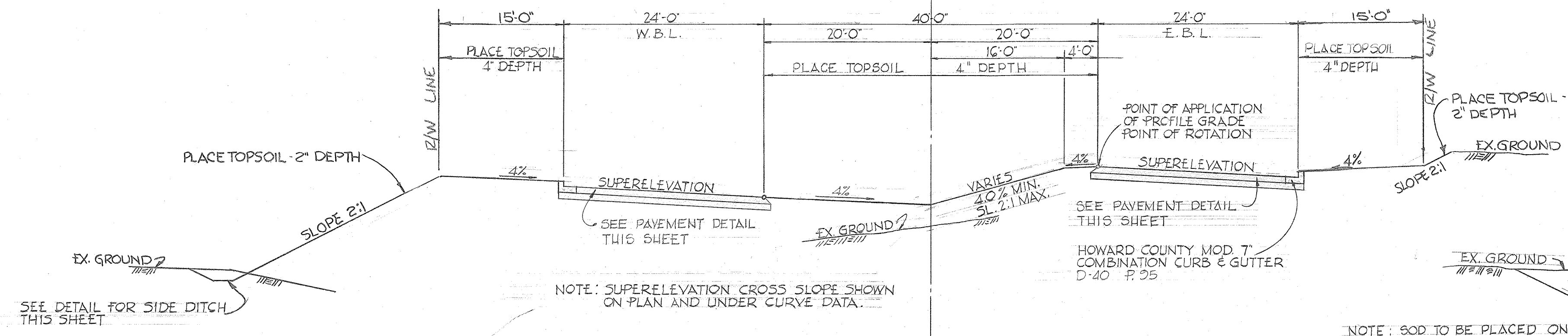
NOTE: 4" & 2" TOPSOIL, SEED (ART. 36.04) & MULCH (ART. 36.05) TO BE PLACED AS INDICATED ON TYPICAL SECTIONS & DETAILS, UNLESS OTHERWISE NOTED ON THE PLANS.
SEEDING & MULCHING TO BE DONE BY THE OWNER.
SODDING TO BE DONE BY THE OWNER.

- Clearing and Grading Article C-1
- Subgrade Article C-2
- Sub-Base Course Article C-25-2(0)
- Base Course Article C-31 or C-33
- Binder Course Article C-31
- Surface Article C-31



TYPICAL PAVING DETAIL

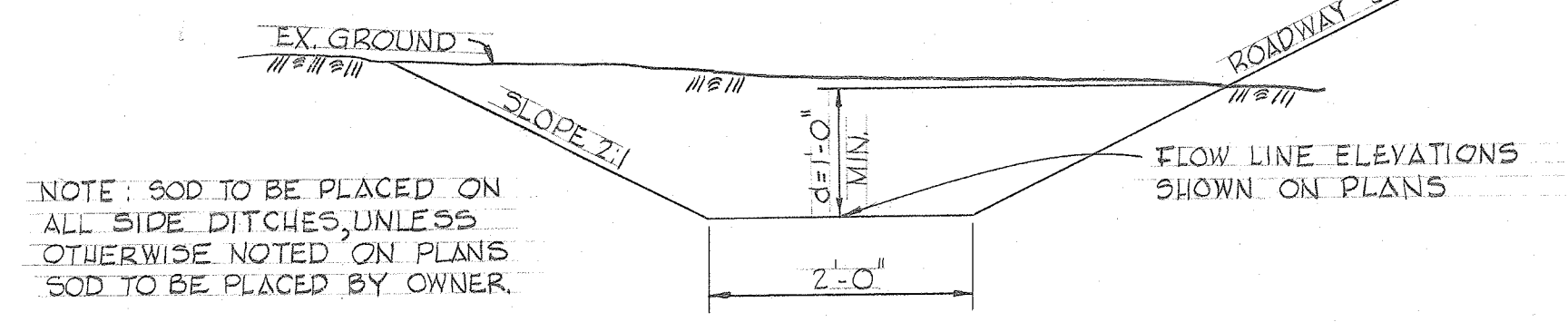
SCALE: 1/2" = 1'-0"
SEE D-112, P. 165 B



TYPICAL GRADED SECTION

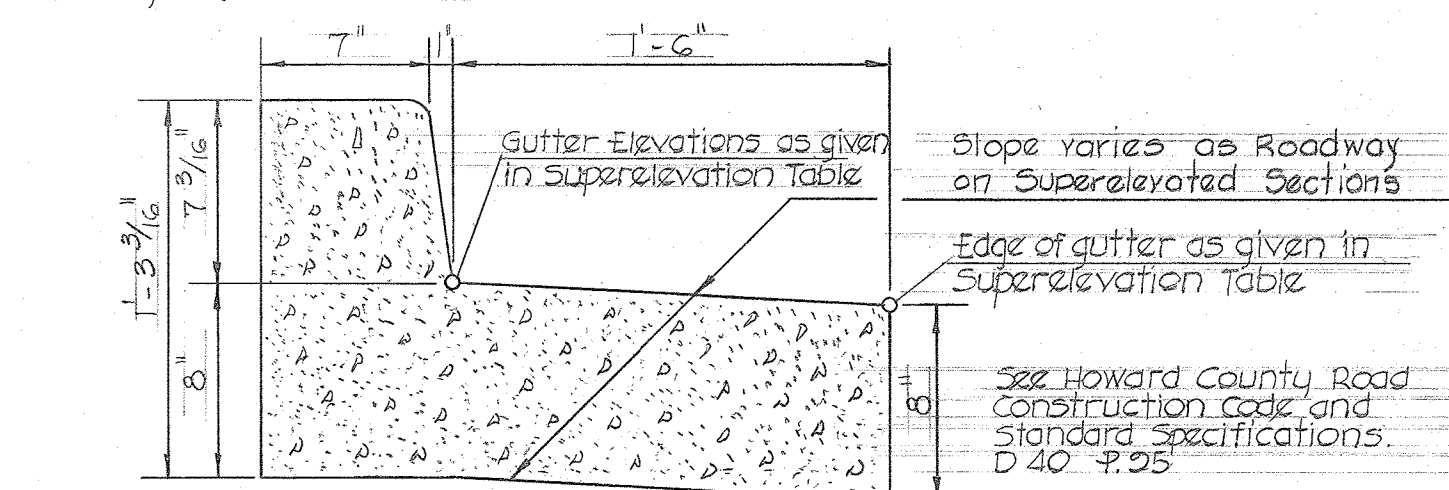
SCALE: 1" = 10'

STA. 236+ TO STA. 246+



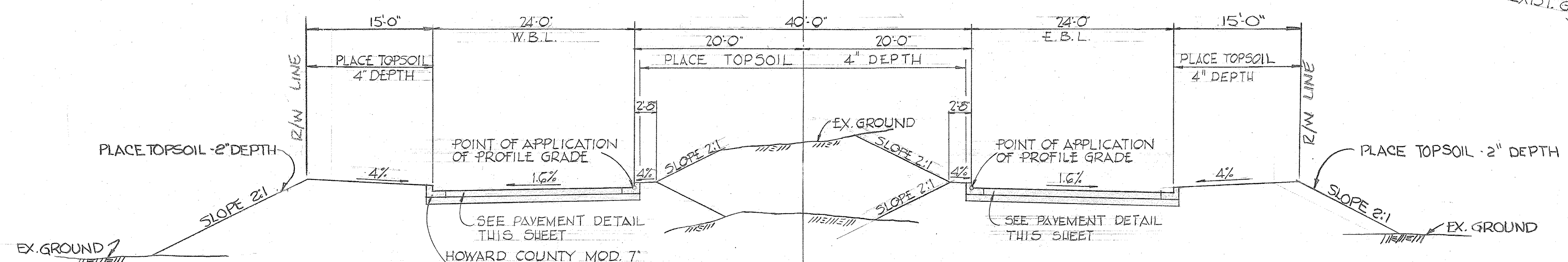
DETAIL SIDE DITCH

SCALE: 1/2" = 1'-0"



DETAIL - MODIFIED COMBINATION CURB & GUTTER

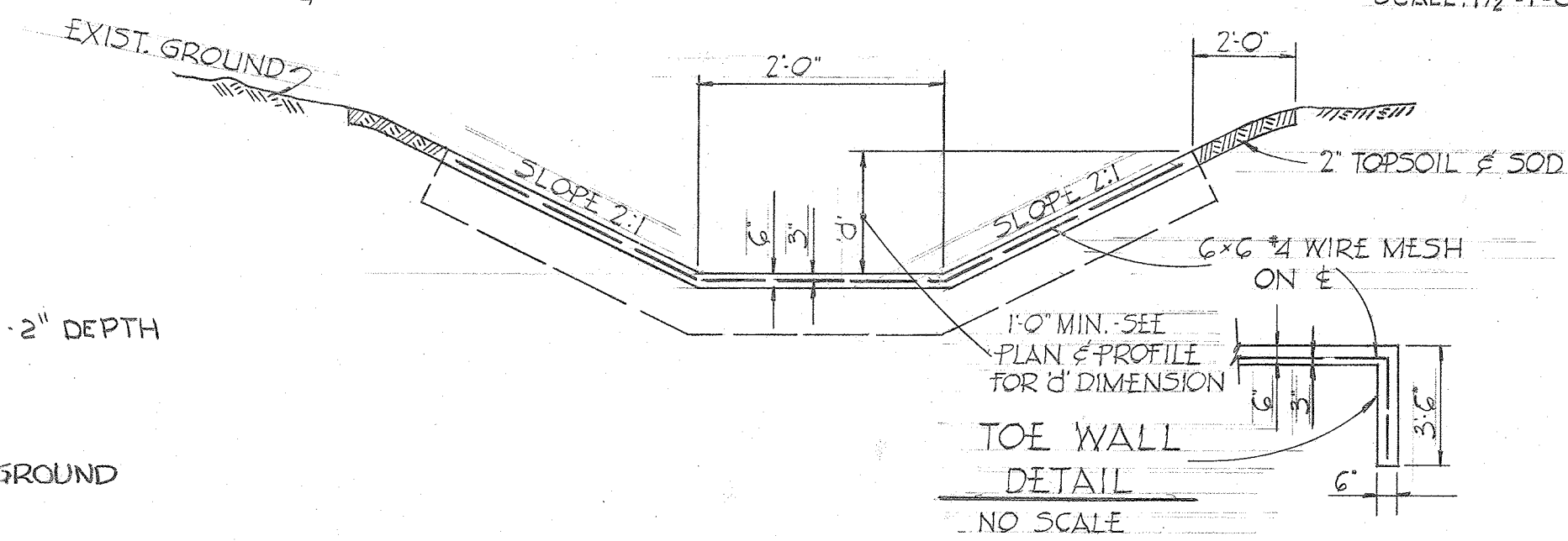
SCALE: 1 1/2" = 1'-0"



TYPICAL GRADED SECTION

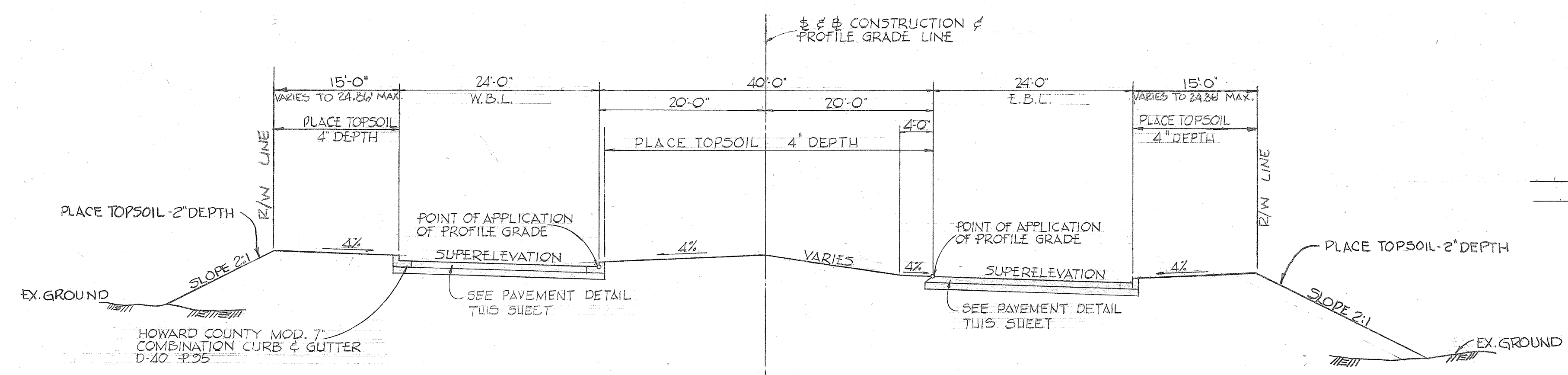
SCALE: 1" = 10'

STA. 229+ TO STA. 236+



CONCRETE SIDE DITCH, INLET & OUTLET CHANNEL

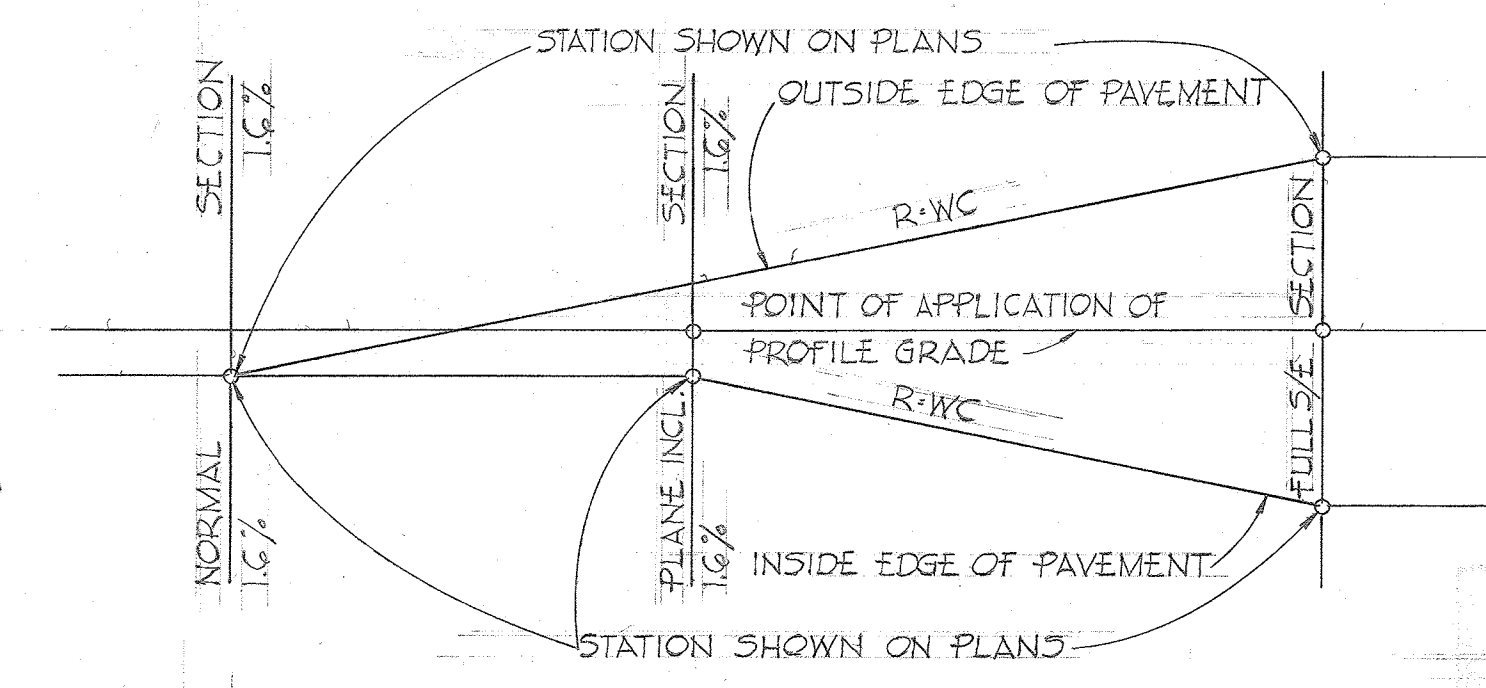
NO SCALE



TYPICAL GRADED SECTION

SCALE: 1" = 10'

STA. 223 TO STA. 228+25
(R/W VARIES FROM 118.00 MIN TO 137.71 MAX)
FROM STA 223+75 TO STA 226+49.35



DETAIL SUPERELEVATION TRANSITION

APPROVED
PLANNING COMMISSION
OF HOWARD COUNTY
DATE 3-26-69
J.R.C.

Rev No	Rev Date	Revision Description
4/68		ADDED TYPICALS STA. 223 TO STA. 246+

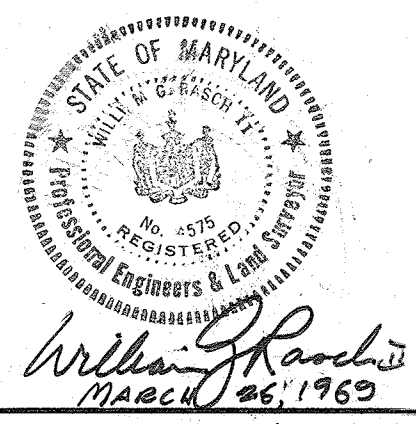
OWNER AND DEVELOPER
COLUMBIA MARYLAND
HOWARD RESEARCH AND DEVELOPMENT CORP.
THE VALLEY OF CROSS KEY - BALTIMORE, MARYLAND 21202

PROJECT AREA
GOV. WARFIELD PARKWAY

PROJECT TITLE
TYPICAL SECTIONS & DETAILS

Des. By: D.E.H.	Scale: AS SHOWN	Des. No.
Drawn By: D.E.H.	Date	C.C.F. No.
Chk. By: B.M.J.	Approved	

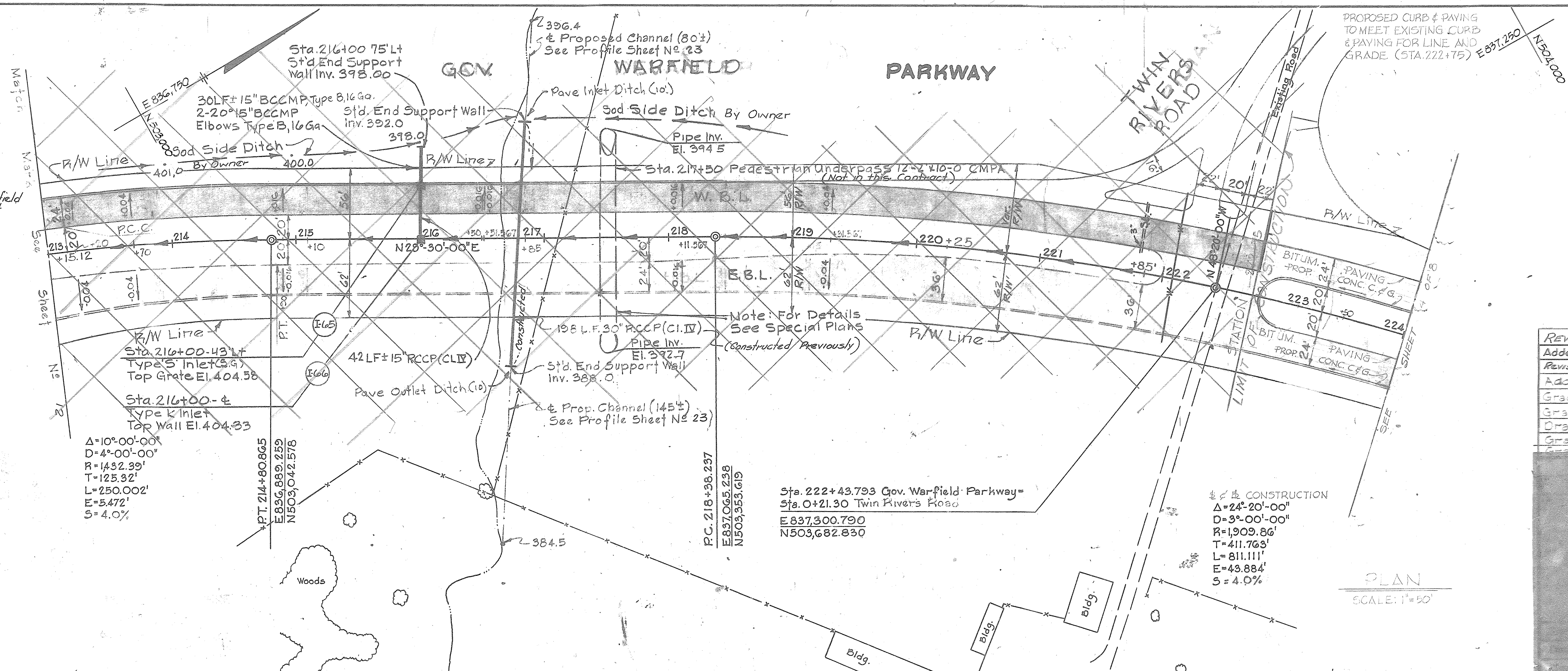
PURDUM & JESCHKE
CONSULTING ENGINEERS &
LAND SURVEYORS
1023 N. CALVERT STREET
BALTIMORE, MARYLAND 21202



DATE	
BY	
SURVEYED	
PLOTTED	
ALIGNED	
CHECKED	
RT. OF WAY	
NO.	

DATE	
BY	
SURVEYED	
PLOTTED	
CHECKED	
STRUCTURE	
NO.	

For Construction of Gov Warfield Parkway From Little Patuxent Parkway to Station 213. See Sheet 12



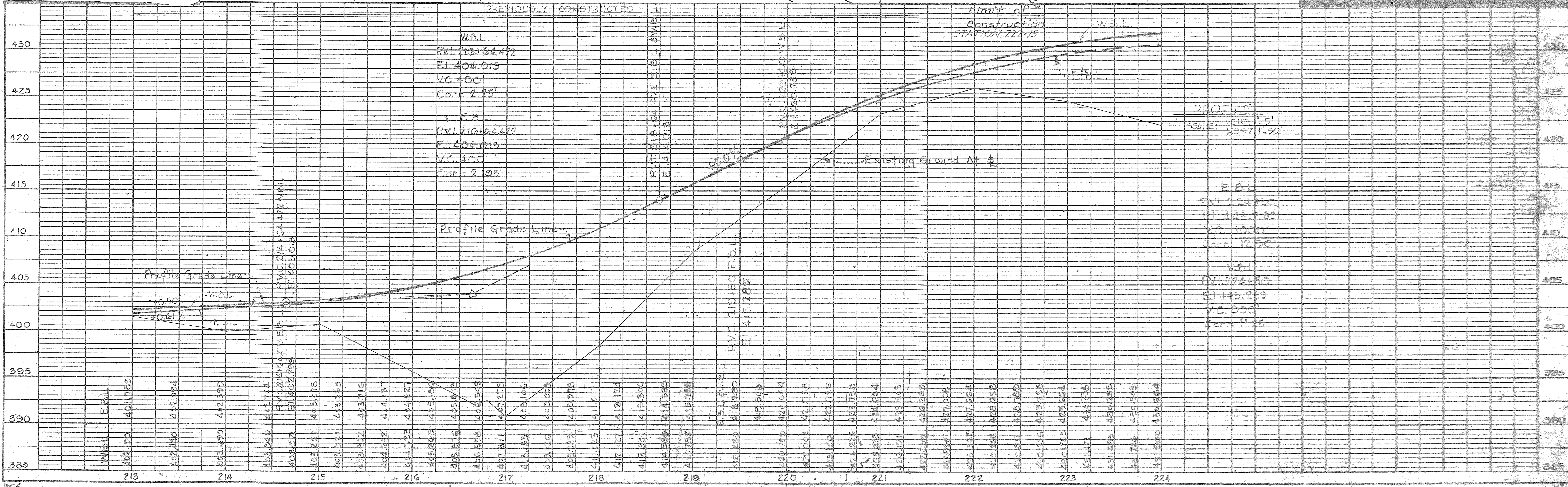
Storm Drain Profiles
Sta 216+75 See Sheet No 9
Sta 213+00 to 224+00 See Sheet No 9

NOTE: VEHICULAR INGRESS AND EGRESS IS RESTRICTED ALONG THE ENTIRE ROADWAY SHOWN HEREON EXCEPT AT POINTS OF ACCESS APPROVED BY THE HOWARD COUNTY PLANNING COMMISSION!

APPROVED
PLANNING COMMISSION
OF HOWARD COUNTY
DATE 3-26-69
JWC

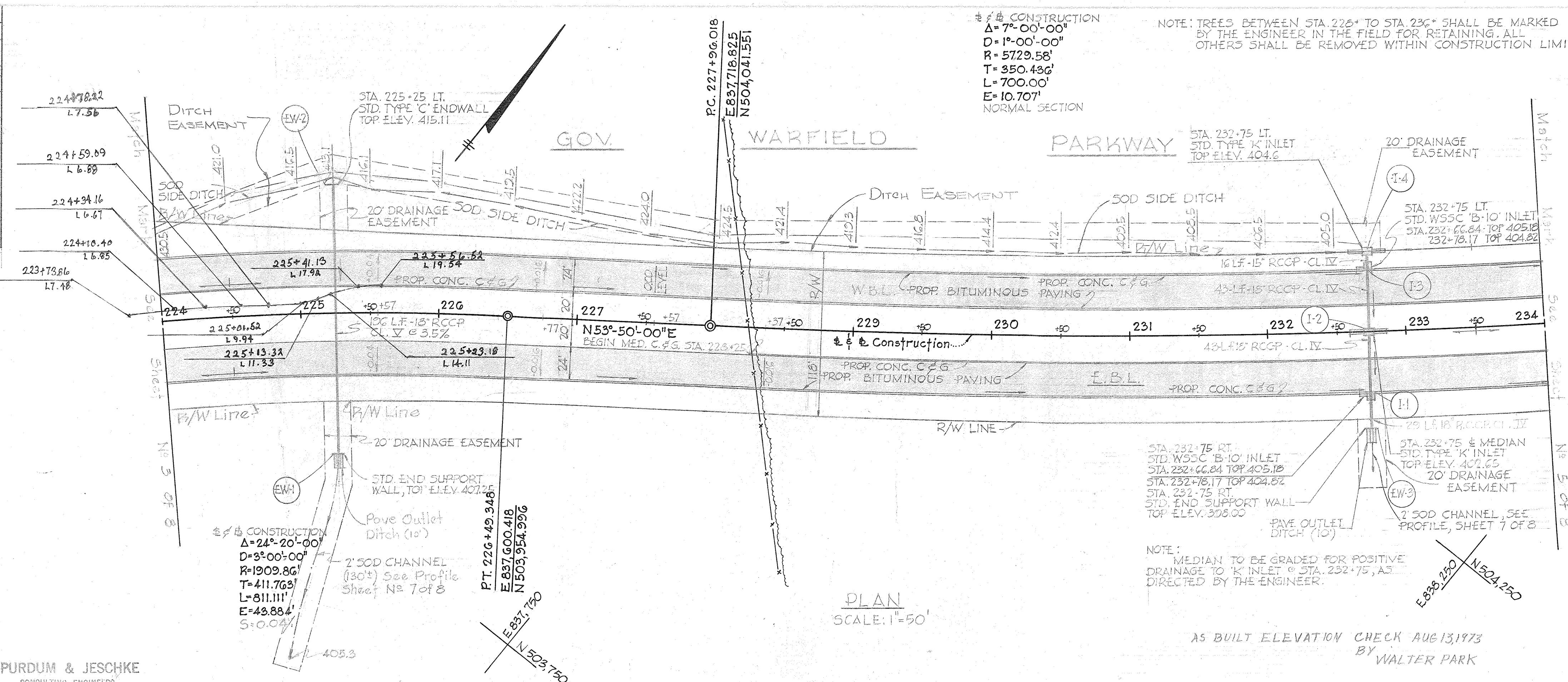
REVISED FOR CONSTRUCTION PLANS	9/2/68
Added Duct for Street Lighting, Added Water Line	5/1/67
Revised For Contract Plans	3/2/67
Added Drainage	9/2/66
Grade Revised	5/1/66
Grade Revised	7/2/64
Drainage	4/29/64
Grade	6/24/64
Grade & Drainage	5/1/64

PLAN
SCALE: 1"=50'



PROFILE
VERT. 1"=5'
SCALE: HORIZ. 1"=50'

STRUCTURE		SCHEDULE		REMARKS
NO.	TYPE	TOP ELEV.		
EW-2	'C'	415.11		HOWARD COUNTY STANDARD ENDWALL DRWG. D-52, P.107
EW-1	—	407.25		STANDARD END SUPPORT WALL SEE DRWG. D-46, P.101
EW-3	—	398.00		STANDARD END SUPPORT WALL SEE DRWG. D-46, P.101
I-1	W55C 'B-10'	405.18 404.82		SEE GENERAL NOTES SHEET 1 OF 8.
I-2	'K'	402.65		HOWARD COUNTY STANDARD DRAWING D-33, P.146
I-3	W55C 'B-10'	405.16 404.82		SEE GENERAL NOTES SHEET 1 OF 8.
I-4	'K'	404.6		HOWARD COUNTY STANDARD DRAWING D-33, P.146



AS-BUILT CERTIFICATION
 I HEREBY CERTIFY, BY SEAL, THAT THE FACILITIES SHOWN ON THIS PLAN WERE CONSTRUCTED AS SHOWN ON THIS PLAN. MEET THE CURRENT APPROVED PLANS AND SPECIFICATIONS.

Walter Park
 WALTER PARK
 PROFESSIONAL LAND SURVEYOR #10849
 LICENSE EXPIRATION DATE 4/1/2020
 AS-BUILT SURVEY DATE 6-10-2018

PURDUM & JESCHKE
 CONSULTING ENGINEERS
 AND LAND SURVEYORS
 1023 NORTH CALVERT STREET
 BALTIMORE, MARYLAND 21202

Storm Drain Profiles
 Sta. 224+00 to 234+00 See Sheet No. 7 of 8

APPROVED
 PLANNING COMMISSION
 OF HOWARD COUNTY
 DATE 3-26-69
Walter Park
 March 26, 1969

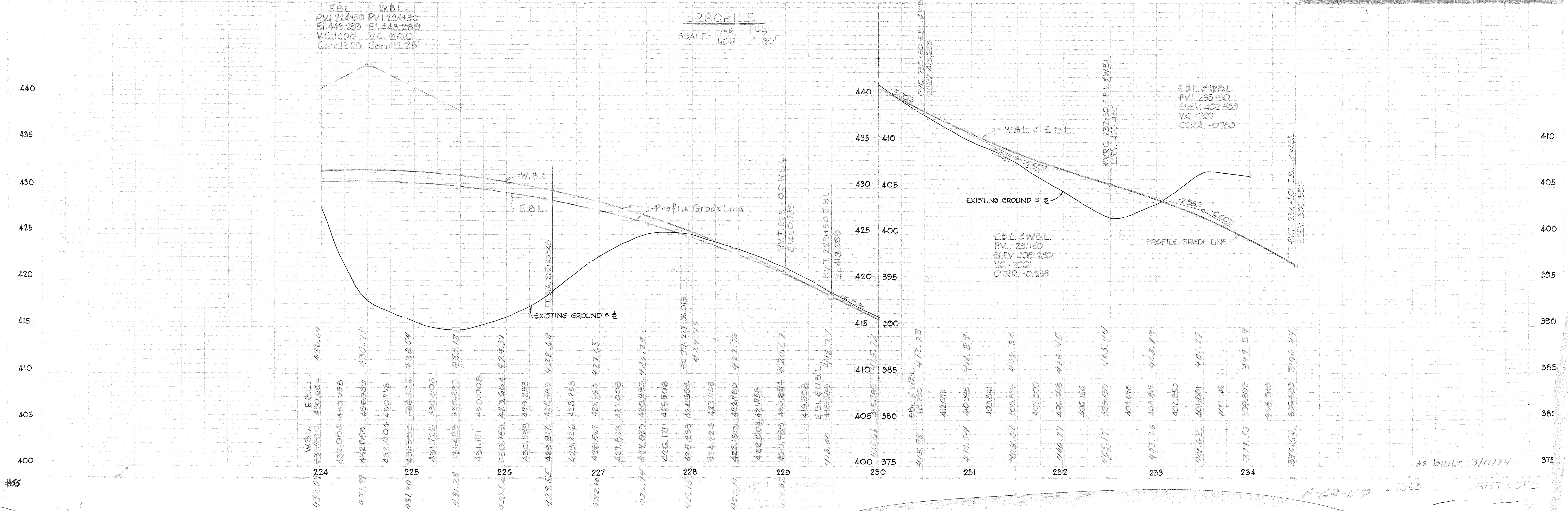
REVISED FOR CONSTRUCTION PLANS 3-2-68

Drainage Added Sept. 22, 1966
 Drainage Added Aug. 22, 1966
 Grade Change Aug. 18, 1966
 Grade Change July 22, 1966

GOV. WARFIELD PARKWAY
 Sta. 224+ To Sta. 234+

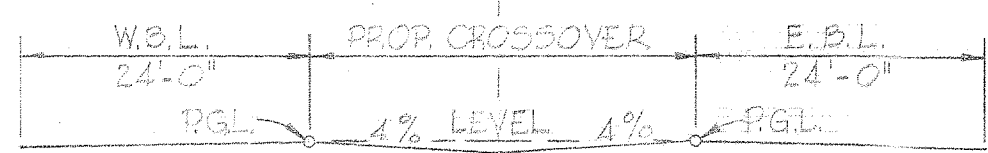
COLUMBIA

As BUILT 3/11/74



STRUCTURE NO.	TYPE	TOP ELEV.	SCHEDULE	REMARKS
EW-4	—	381.37		STANDARD END SUPPORT WALL, SEE DRWG. D-46, P.101
I-5	W55C B-10	385.13 384.49		SEE GENERAL NOTES SEE SHEET 1 OF 8
EW-5	C	357.9		HOWARD COUNTY STANDARD ENDWALL DRWG. D-52, P.107
I-6	K	363.0		HOWARD COUNTY STANDARD DRAWING D-93, P.145
I-7	W55C B-10	366.56 366.58		SEE GENERAL NOTES SEE SHEET 1 OF 8
EW-6	C	362.16		HOWARD COUNTY STANDARD ENDWALL DRWG. D-52, P.107

NOTE: PAVING TO BE SAME AS MAINLINE

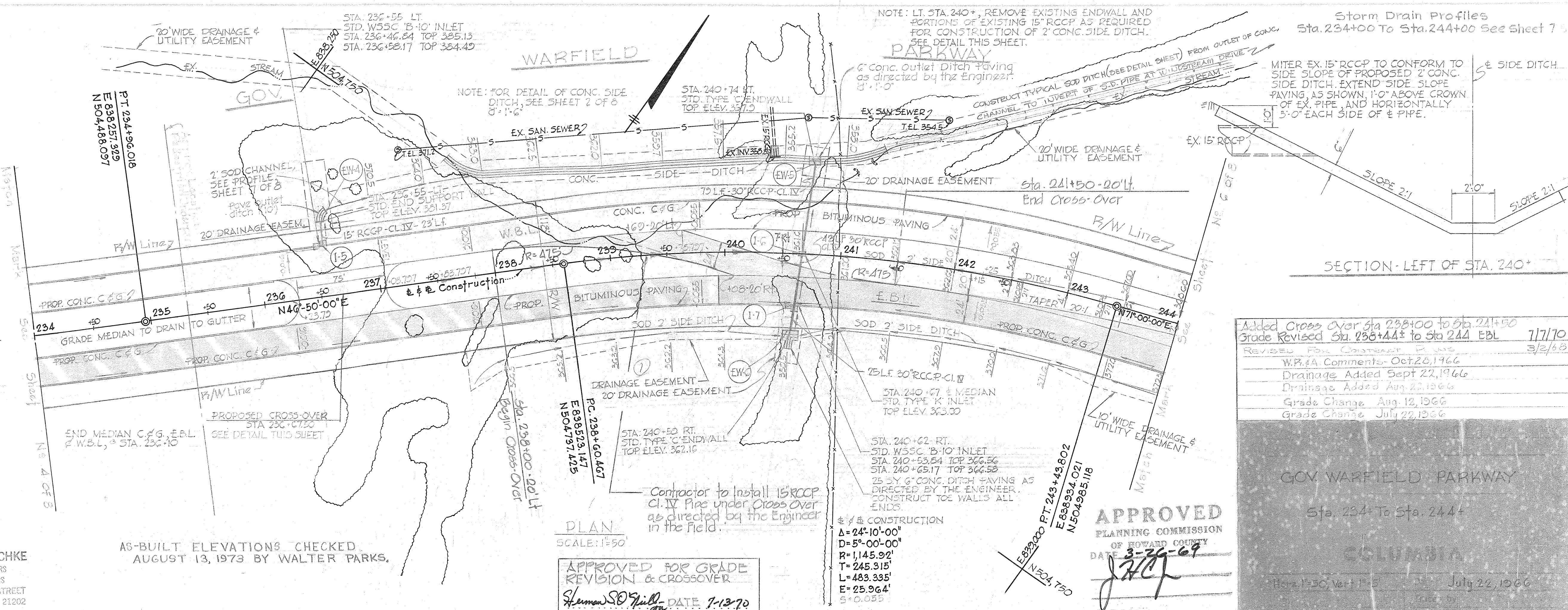


TYPICAL CROSS-OVER DETAIL
NO SCALE
STA. 236+67.50

NOTE: VEHICULAR INGRESS AND EGRESS IS RESTRICTED ALONG THE ENTIRE ROADWAY SHOWN HEREON EXCEPT AT POINTS OF ACCESS APPROVED BY THE HOWARD COUNTY PLANNING COMMISSION.

PURDUM & JESCHKE
CONSULTING ENGINEERS
AND LAND SURVEYORS
1023 NORTH CALVERT STREET
BALTIMORE, MARYLAND 21202

AS-BUILT ELEVATIONS CHECKED
AUGUST 13, 1973 BY WALTER PARKS.



PLAN
SCALE: 1"=50'

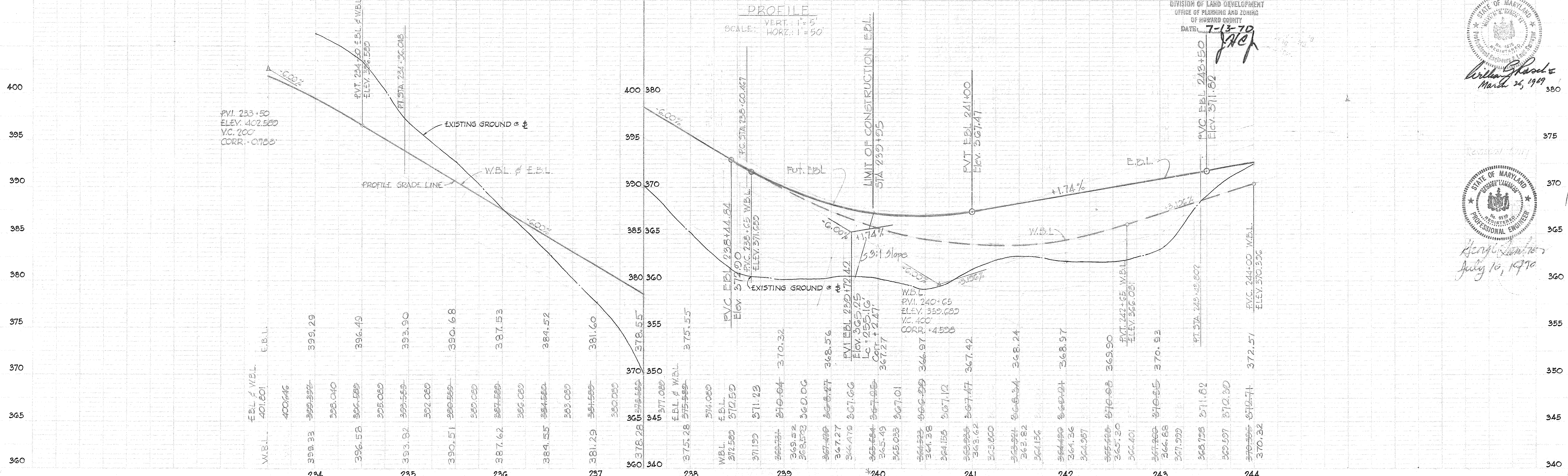
APPROVED FOR GRADE REVISION & CROSSOVER
S. H. Hill DATE: 7-13-70

APPROVED
PLANNING COMMISSION
OF HOWARD COUNTY
DATE: 3-29-69
J. H. Hill

Added Cross Over Sta 238+00 to Sta 241+50
Grade Revised Sta. 236+44 to Sta 244 EBL 7/17/70
REVISION FOR CONTRACT P. 105
W.P.A. Comments - Oct. 26, 1966
Drainage Added Sept 22, 1966
Drainage Added Aug 22, 1966
Grade Change Aug. 12, 1966
Grade Change July 22, 1966

GOV WARFIELD PARKWAY
Sta. 234 To Sta. 244
COLUMBIA
REV. 1-50, Vert. P. 5 July 22, 1966

PROFILE
SCALE: VERT. 1"=5'
HORIZ. 1"=50'



REVISION
DIVISION OF LAND DEVELOPMENT
OFFICE OF PLANNING AND ZONING
OF HOWARD COUNTY
DATE: 7-13-70
J. H. Hill

STATE OF MARYLAND
PROFESSIONAL ENGINEER
Walter Parks
March 26, 1969
Henry Hillman
July 10, 1970

NOTE: VEHICULAR INGRESS AND EGRESS IS RESTRICTED ALONG THE ENTIRE ROADWAY SHOWN HEREON EXCEPT AT POINTS OF ACCESS APPROVED BY THE HOWARD COUNTY PLANNING COMMISSION.

PLAN
SCALE: 1"=50'

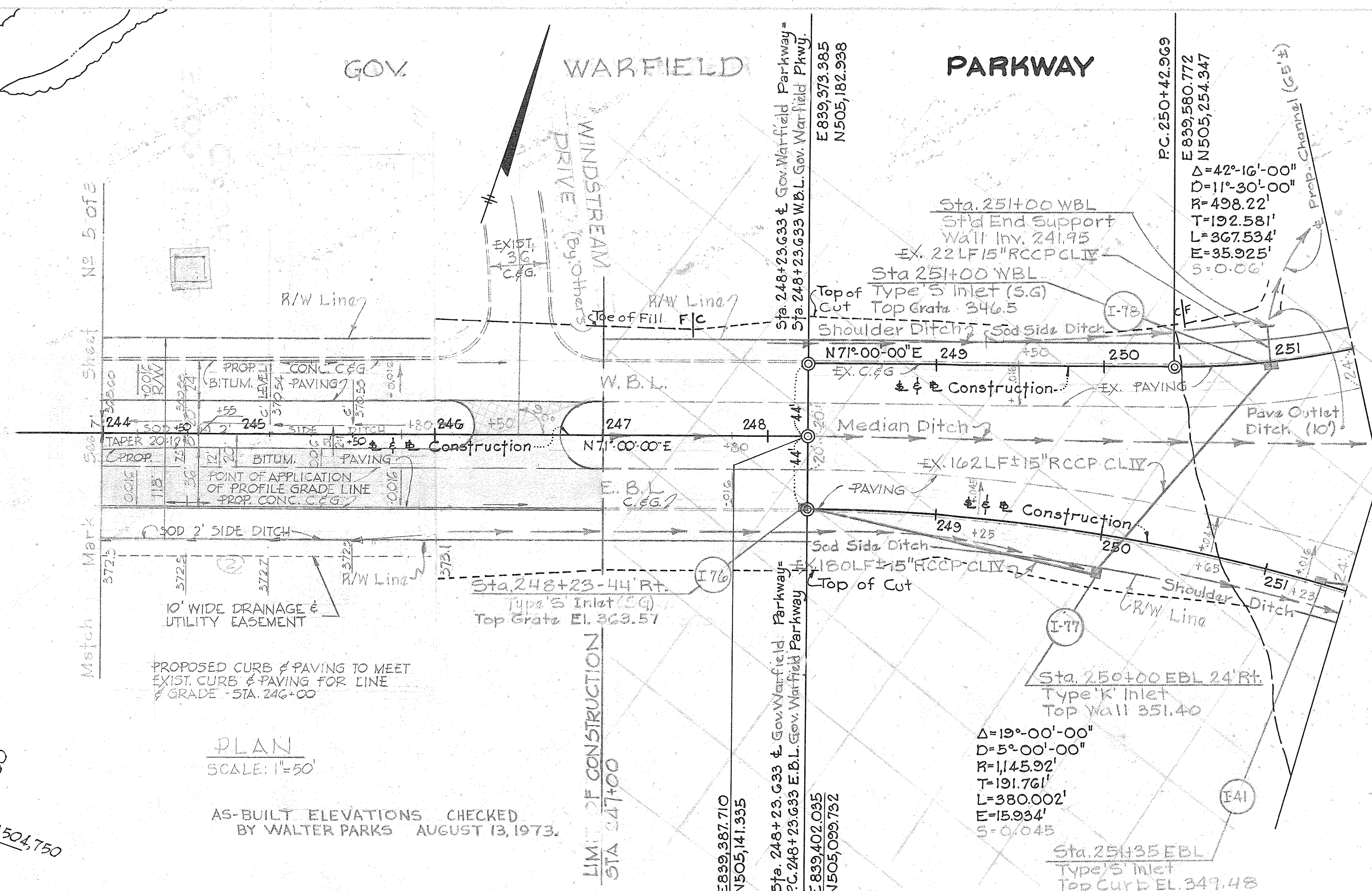
PURDUM & JESCHKE
CONSULTING ENGINEERS
AND LAND SURVEYORS
1023 NORTH CALVERT STREET
BALTIMORE, MARYLAND 21202

E839,000
N504,750

PLAN
SCALE: 1"=50'

AS-BUILT ELEVATIONS CHECKED
BY WALTER PARKS AUGUST 13, 1973.

LIMIT OF CONSTRUCTION
STA 247+00



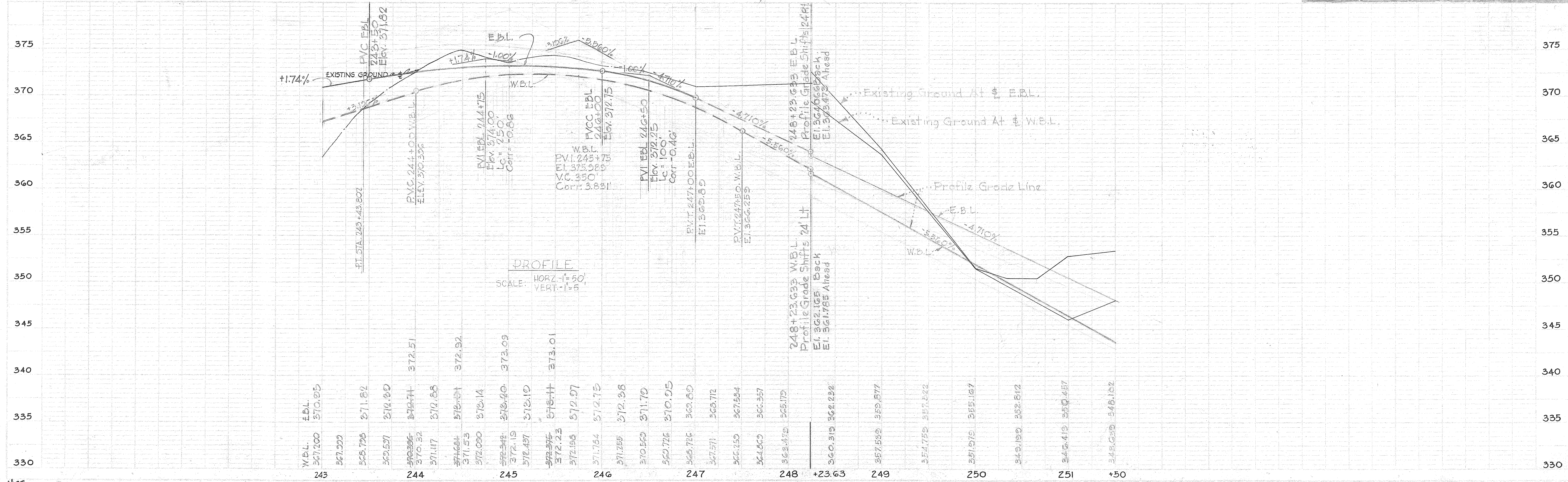
APPROVED FOR GRADE
REVISION & CROSSOVER
DATE: 7-13-70
S. O'Neil

REVISED
DIVISION OF LAND DEVELOPMENT
OFFICE OF PLANNING AND ZONING
OF HOWARD COUNTY
DATE: 7-13-70
JNEJ

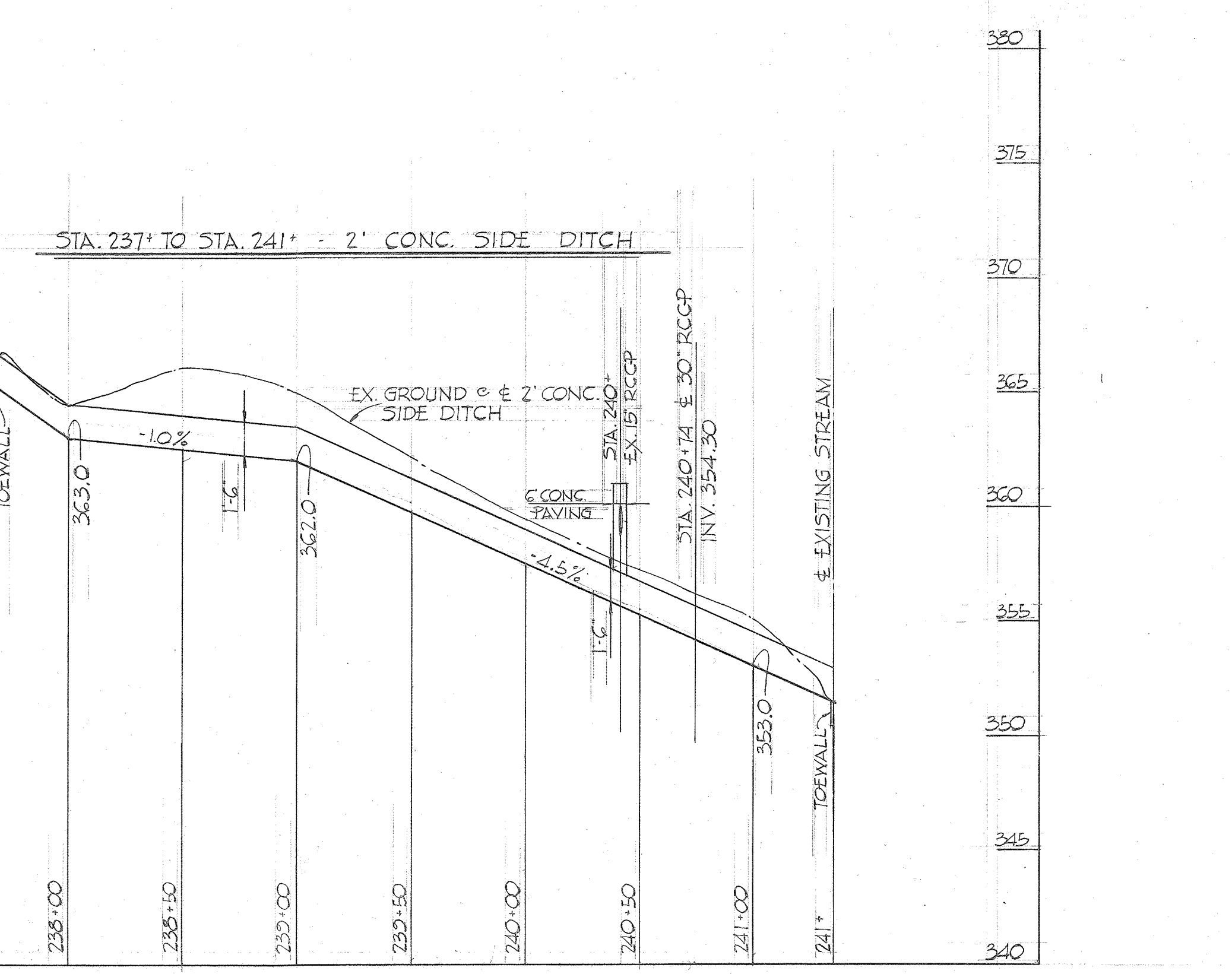
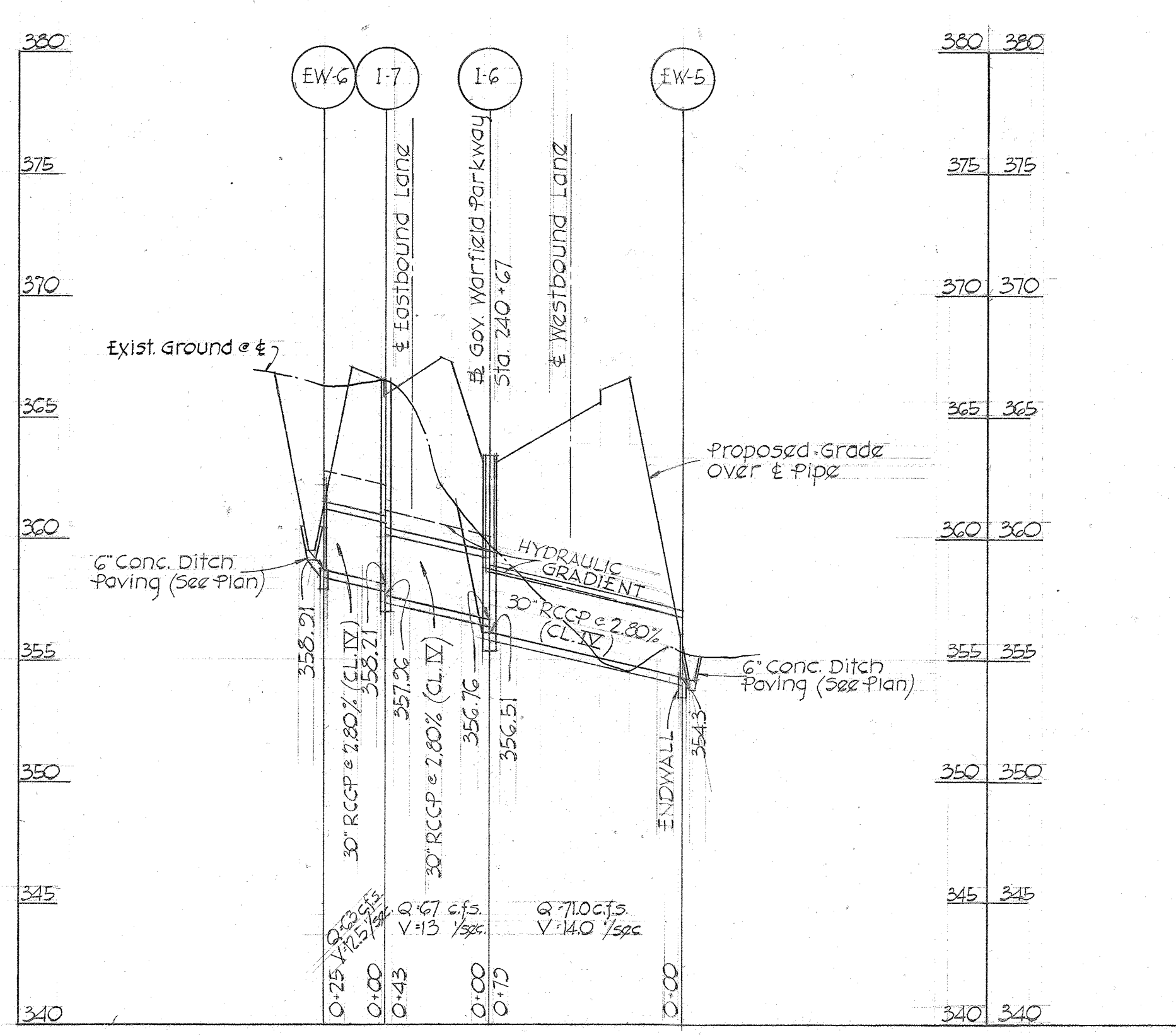
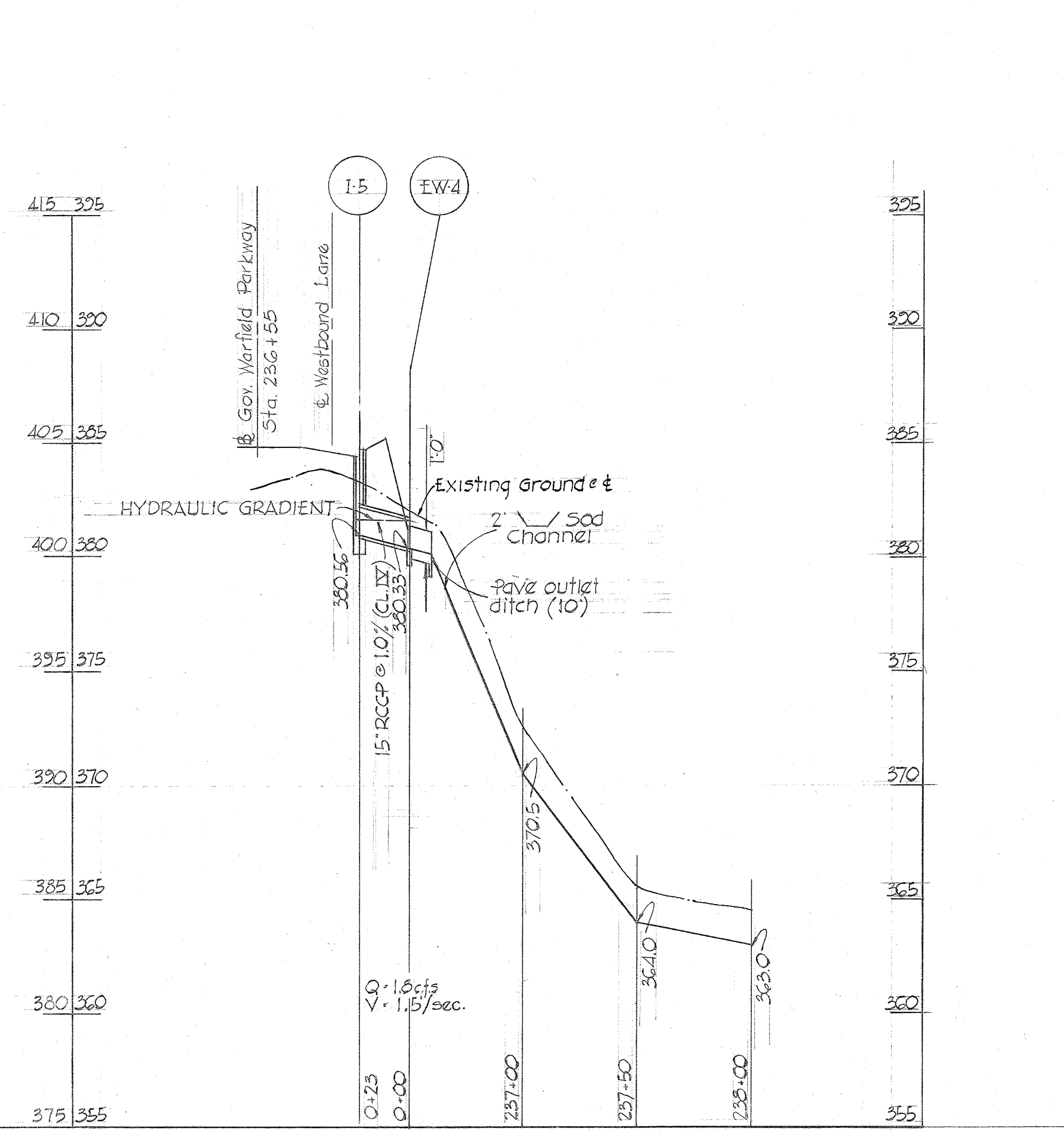
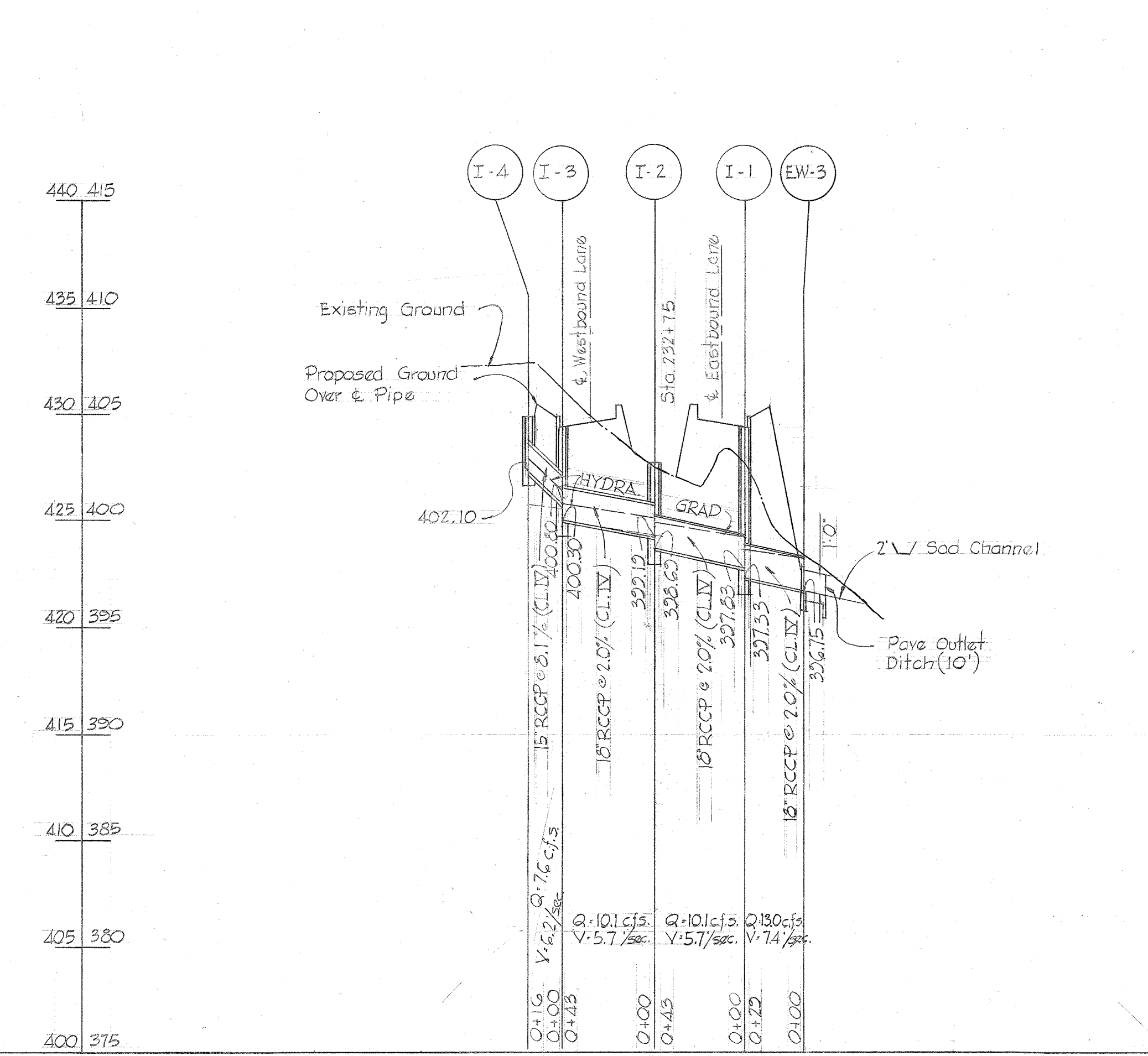
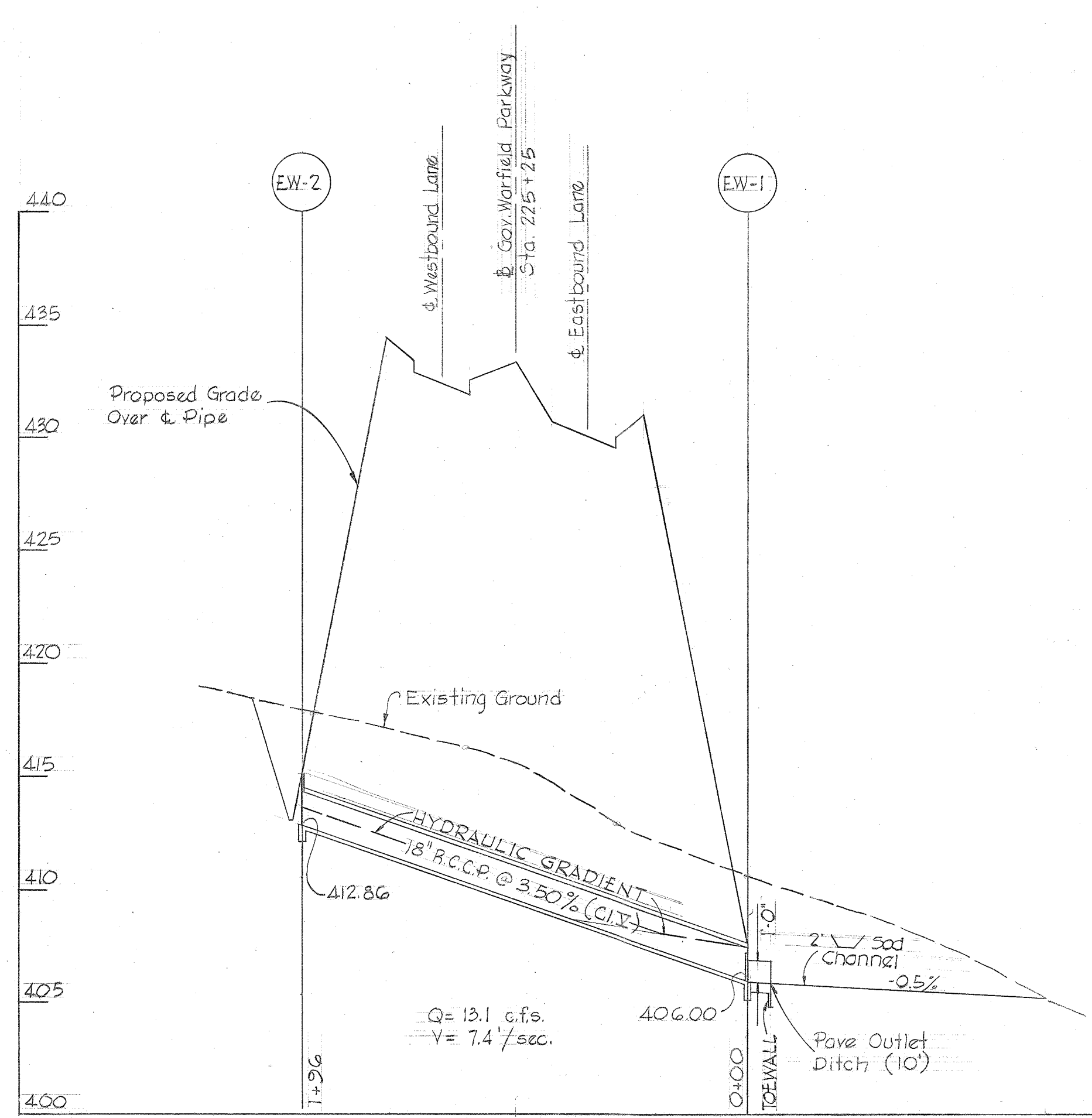
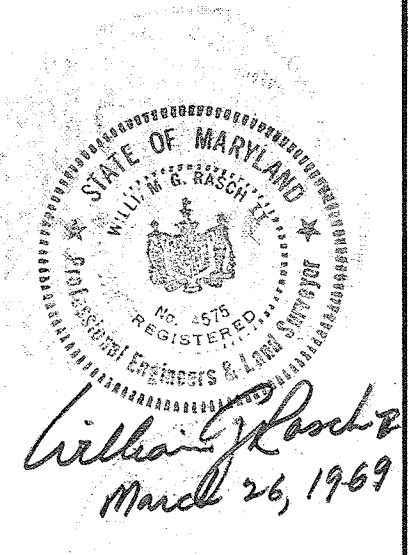
APPROVED
PLANNING COMMISSION
OF HOWARD COUNTY
DATE: 3-26-69
JNEJ

Revision only
STATE OF MARYLAND
PROFESSIONAL ENGINEER
C. W. G. G. G.
March 26, 1969

Grade Revised Sta. 244 to Sta. 247 E.B.L.	7/7/70
REVISED FOR CONTRACT PLANS	3/2/68
Added Drainage	9/22/66
Grade Revised	8/12/66
Grade Revised	7/23/66
Drainage	4/23/66
Grade & Green Cove Road Location	5/18/66



PROFILE
SCALE: HORIZ. 1"=50'
VERT. 1"=5'



APPROVED
 PLANNING COMMISSION
 OF HOWARD COUNTY
 DATE 3-26-69
J.R.P.

PURDUM & JESCHKE
 CONSULTING ENGINEERS &
 LAND SURVEYORS
 1023 N. CALVERT STREET
 BALTIMORE, MARYLAND 21202

Rev. Date	Rev. No.	Revision Description
COLUMBIA MARYLAND		
OWNER AND DEVELOPER HOWARD RESEARCH AND DEVELOPMENT CORP. THE VILLAGES OF TROGS LANE, BALTIMORE, MARYLAND 21202		
PROJECT AREA GOY. WARFIELD PARKWAY		
PROJECT TITLE STORM DRAIN PROFILES		
Des. By: D.E.H.	Scale: HOR. 1"=50', VER. 1"=5'	Dwg. No.
Dist. By: D.E.H.	Date	C.C.F. No.
Chk. By: B.M.J.	Approved	

