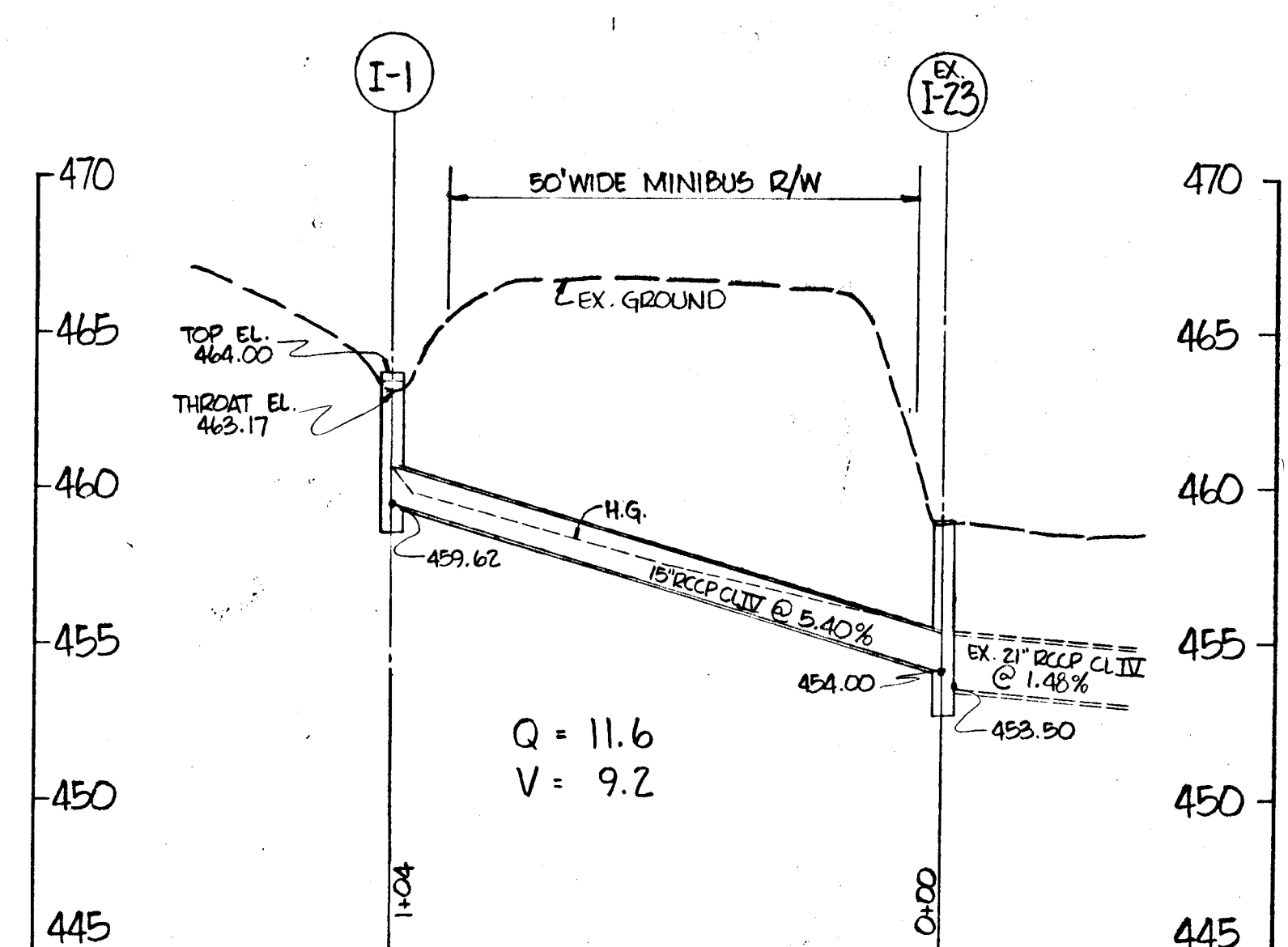


STORM DRAINAGE STRUCTURE SCHEDULE			
NO.	TYPE	EX. OUT.	IN. ELEV.
I-1	STD "D" TYPE INLET	459.62	464.00

LOCATION	NO.	AREA	ACRES	COEFF.	EA	SEA	TIME CONC. MIN	INVEN.	Q'S DIA.	SIZE	LENGTH	REMARKS
I-1	EX. 23	A	2.69	0.65	175		7.0	6.6	11.6	15"	35'	9.2 104
-	EX. 23B	B	0.22	0.48	0.11		5.0	7.0	0.77			
-	EX. 23C	C	0.18	0.48	0.09		5.0	7.0	0.63			
-	EX. 23D	D	0.99	0.48	0.19		5.0	7.0	1.33			
-	23	E	0.54	0.48	0.26		5.0	7.0	1.82			
EX. 23B	EX. 23	B-E	1.33	0.48	0.64		5.0	7.0	4.48			
EX. 23	EX. 24	A-E	4.02	0.60	2.41		7.0	0.2	7.2	6.6	15.9	EX. 21 1.1' 6.5' 115' 1.48'



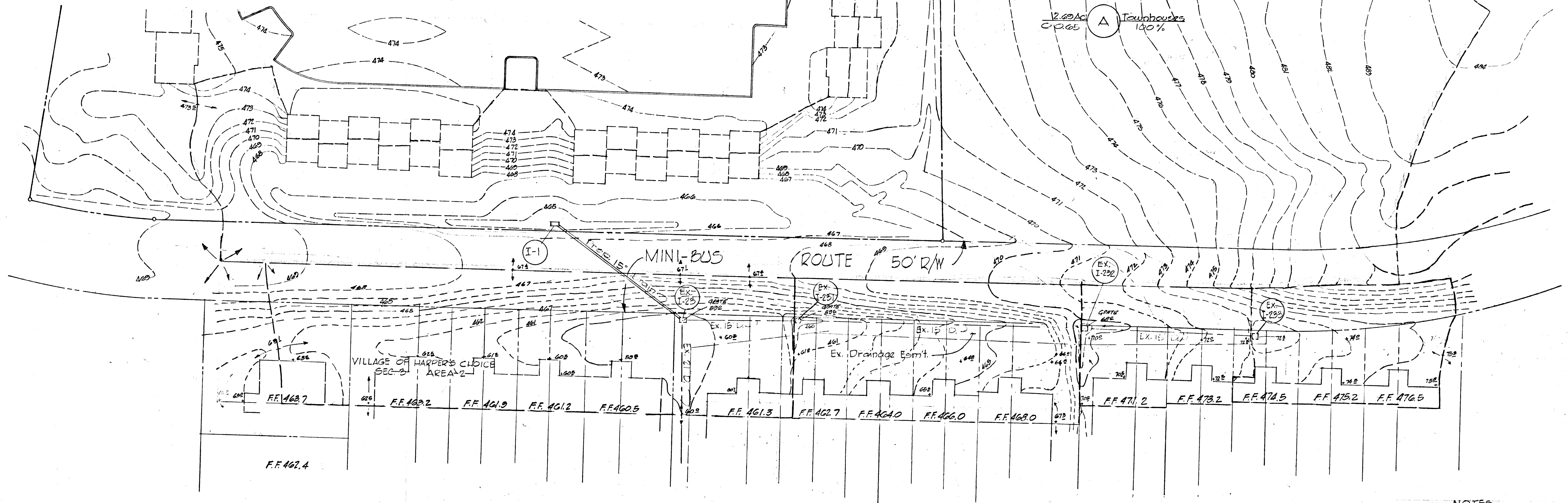
DEPARTMENT OF PUBLIC WORKS  
*Granville N. Weiland* 7/1/70  
 OFFICE OF PLANNING AND ZONING  
*J. H. Clawson* 7-2-70

Rev Date	Rev No	Revision Description
<b>COLUMBIA</b> MARYLAND		
THE ROUSE COMPANY THE VILLAGE OF CROSS KEYS, BALTIMORE, MARYLAND 21210		
PROJECT AREA VILLAGE OF HARPER'S CHOICE SEC. 3 AREA 2		
PROJECT TITLE STORM DRAIN EXTENSION PLAN & PROFILE		
Des By T.O. WILK III	Scale AS SHOWN	Dwg No 1 OF 2
Drn By C.H. CREAMER	Date 6-2-70	C.C.F. No
Chk By T.O. WILK III	Approved	



*Columbia* 6519 6/2/70

VILLAGE OF HARPER'S CHOICE  
 SEC. 3 AREA 4  
 HARPER'S VILLAGE TOWNHOUSES



NOTES  
 1. For Plan & Profile of Storm Drain System  
 I-1 to Ex. I-23 see Sht. 1 of 2

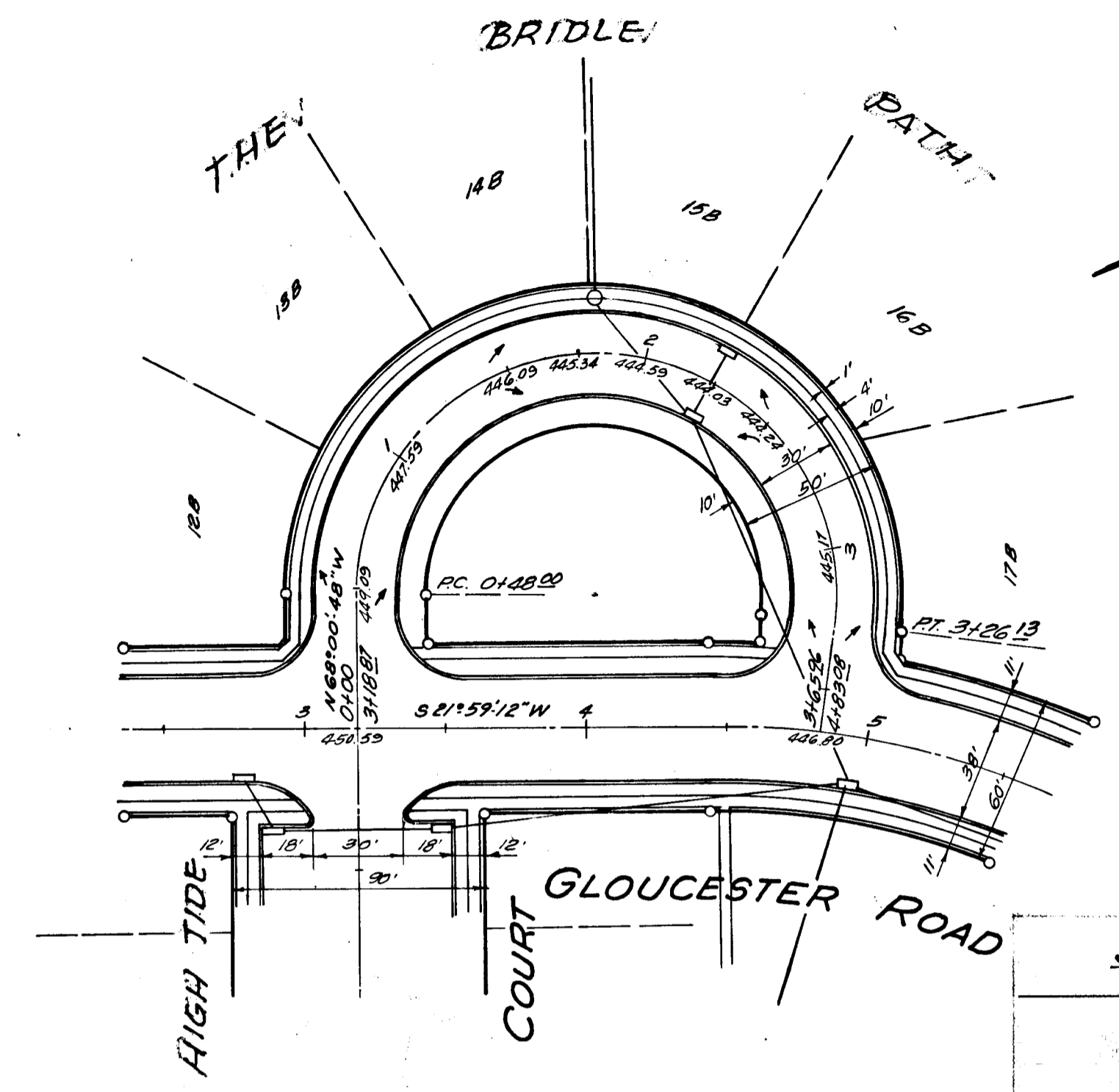
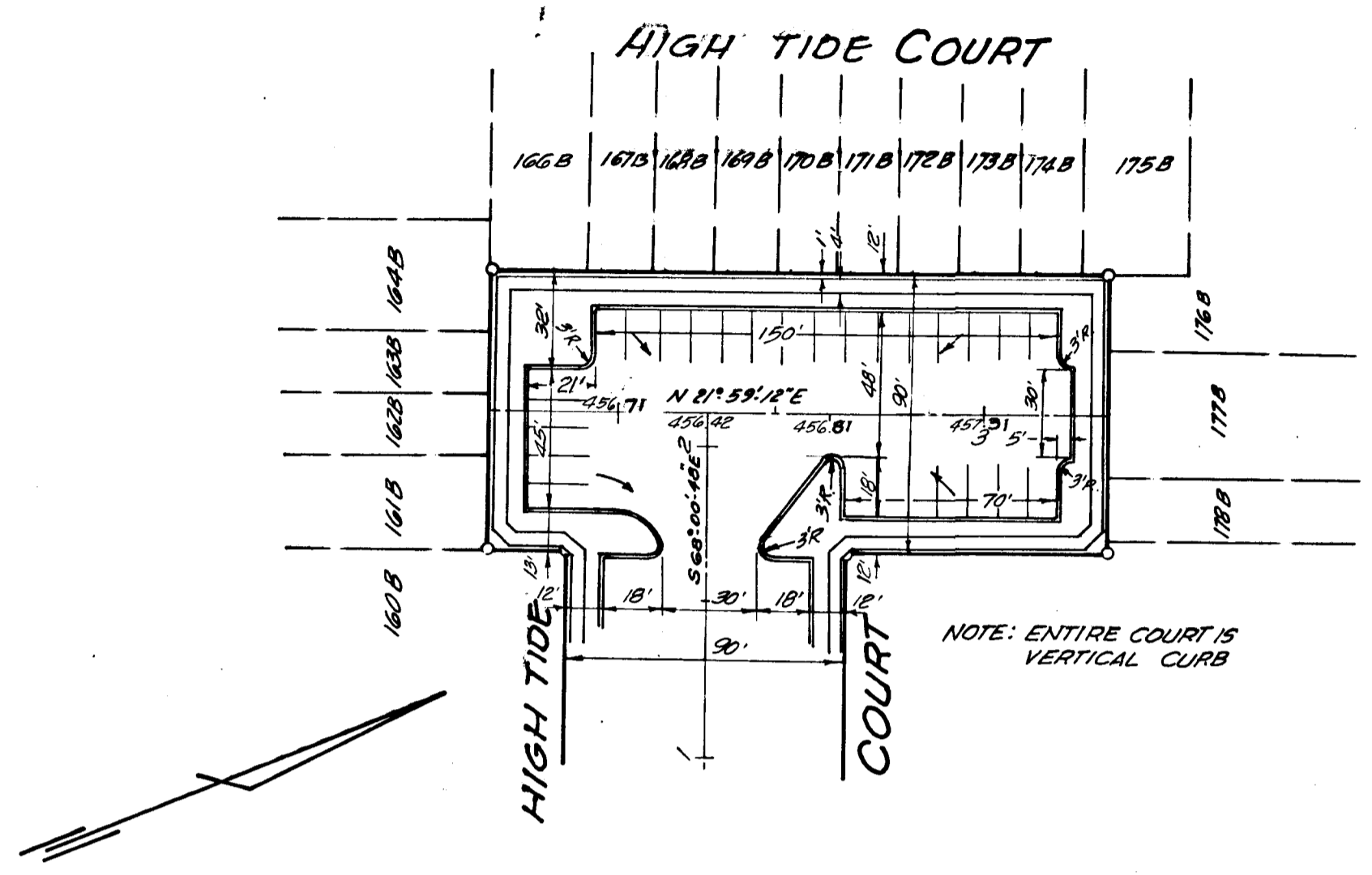
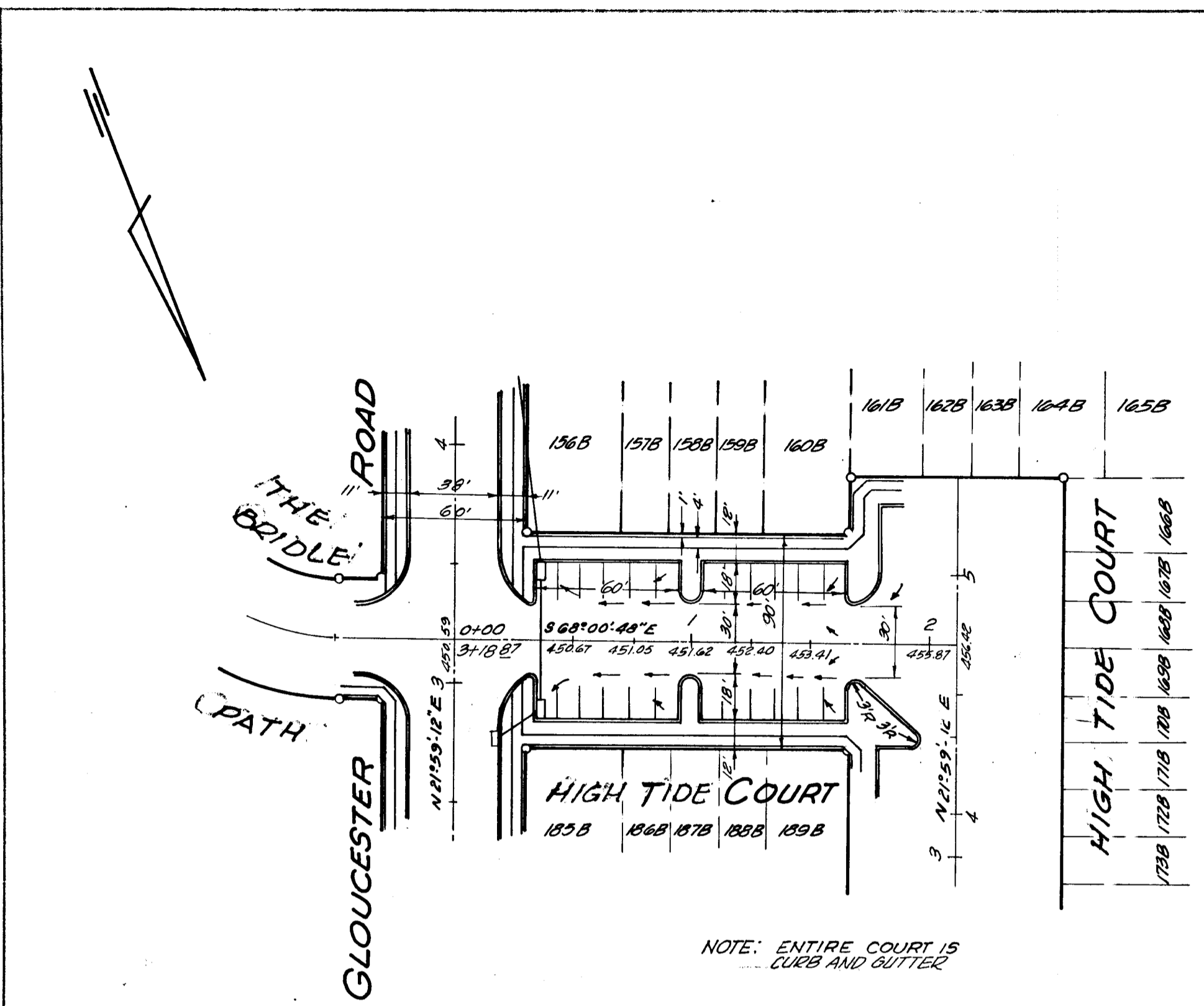
DEPARTMENT OF PUBLIC WORKS  
*Francis M. McLeod 7/1/70*  
 DIVISION OF PLANNING AND ZONING  
*J. J. Clawson 7/2/70*

Rev Date	Rev No	Revision Description
<b>COLUMBIA</b> MARYLAND		
THE ROUSE COMPANY		THE VILLAGE OF CROSS KEYS, BALTIMORE, MARYLAND 21210
PROJECT AREA VILLAGE OF HARPER'S CHOICE SEC. 3 AREA 2		
PROJECT TITLE DRAINAGE AREA MAP FOR INLET I-1		
Des By	Scale	Dwg No
Drn By	Date	C.C.F. No
Chk By	Approved	

PLAN SHEET NO. 49-8400-1  
 DATE: 11-7-68  
 BY: [Signature]  
 CHECKED BY: [Signature]  
 TITLE: [Title]  
 PROJECT: [Project Name]

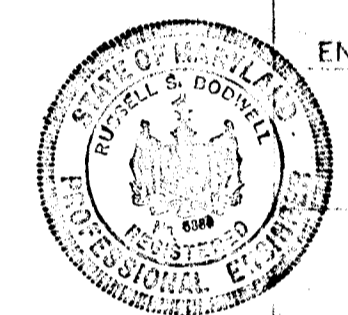
APPROVED: HOWARD COUNTY ROADS DEPT.  
 [Signature] 11-7-68  
 APPROVED: HOWARD COUNTY PLANNING COMM.  
 [Signature] 2-6-69  
 APPROVED: HOWARD COUNTY METROPOLITAN COMM.  
 [Signature] Dec 30-68

REVISED AS PER PLANNING COMMISSION  
 1-31-69



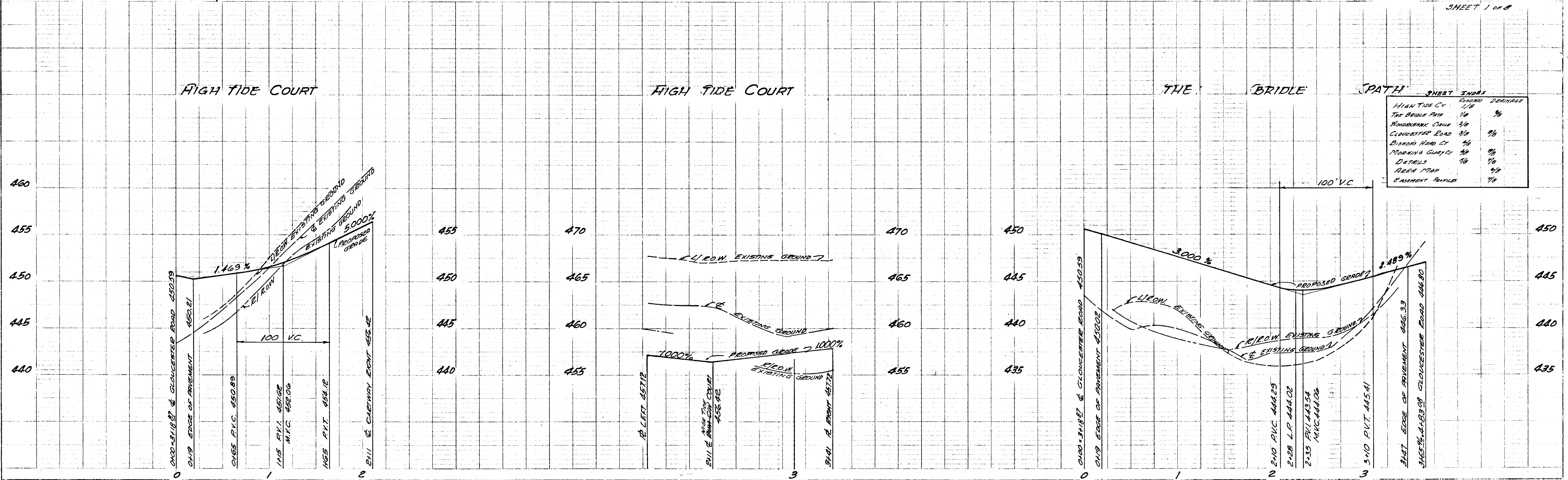
**STRATHMORE AT COLUMBIA**  
**PART I**  
**VILLAGE OF HARPER'S CHOICE**  
 SECTION 3, AREA 2, RESUB LOT 13 PART I  
 OWNER & DEVELOPER  
 THE HOMER DEVELOPMENT CORP.  
 C/O SMITH, SOMMERSVILLE & CASE, 1700 ONE CHARLES CENTER  
 BALTIMORE, MARYLAND  
 5TH ELECTION DISTRICT, HOWARD Co., MD.

PREPARED BY  
 ENGINEERING DEPARTMENT, LEVITT & SONS, INCORPORATED  
 [Signature] - P.E. MD 5880  
 R.S. BODWELL - CIVIL ENGINEER  
 DATE: AUG. 9, 1968



SCALE: 1" = 50'

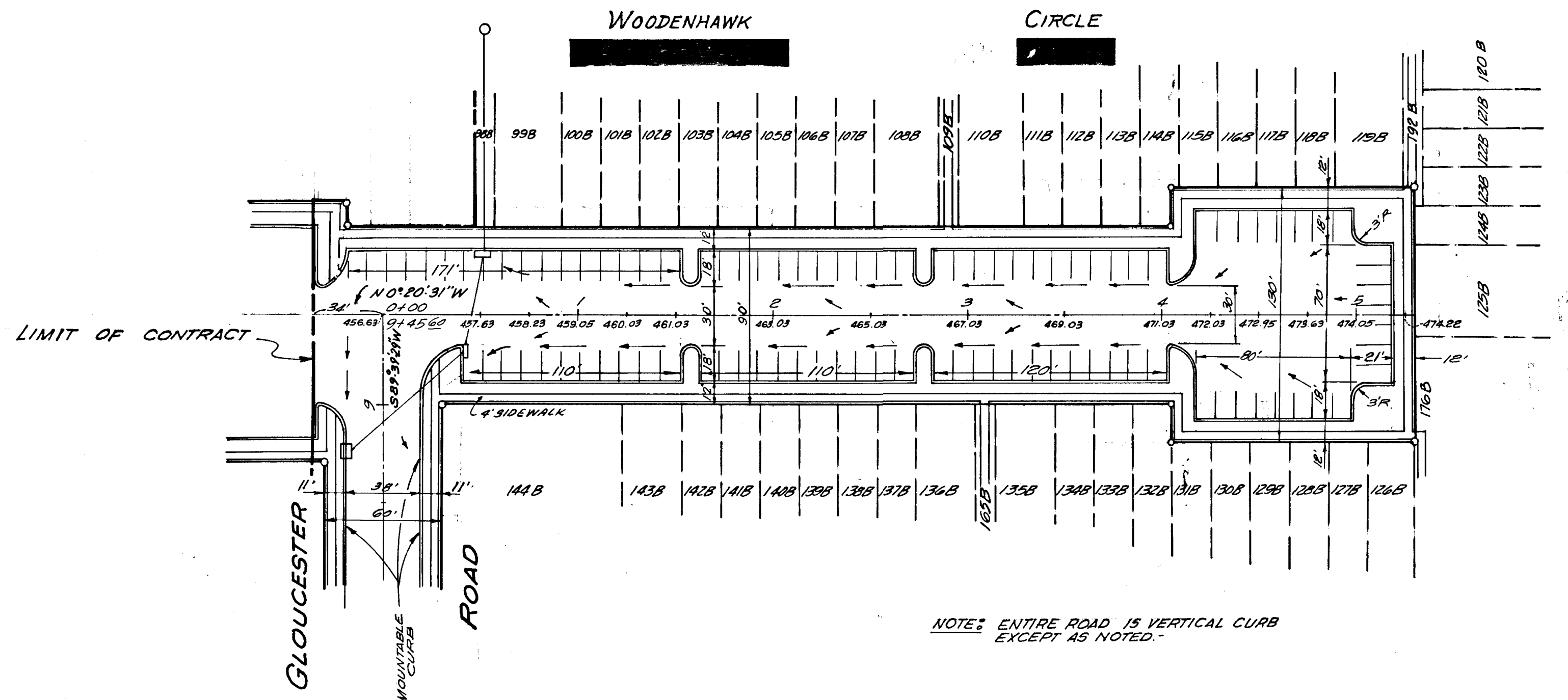
SCALE: 1" = 5' HORIZ.  
 5' VERT.  
 DRAWING No 49-8400  
 SHEET 1 of 2



MINIMUM BUILDING SETBACK RESTRICTION FROM PROPERTY LINE & RIGHT OF WAY OF ANY PUBLIC ROAD OR STREET IS TO BE IN ACCORDANCE WITH THE RECORDED FINAL DEVELOPMENT PLAN CRITERIA

ALL CORNER RADII TO BE 25' TO FACE OF CURB UNLESS OTHERWISE NOTED (SEE DETAIL SHEET)

ALL CURBS & GUTTERS TO BE MOUNTABLE TYPE EXCEPT AT INLETS AND NON-PARALLEL PARKING AREAS, AS NOTED (SEE ROAD CROSS SECTIONS ON DETAIL SHEET)



**STRATHMORE AT COLUMBIA**  
**PART I**  
**VILLAGE OF HARPER'S CHOICE**  
**SECTION 3, AREA 2, RESUB LOT 13 PART I**  
 OWNER & DEVELOPER  
 THE HOMER DEVELOPMENT CORP.  
 C/O SMITH, SOMMERVILLE & CASE, 1700 ONE CHARLES CENTER  
 BALTIMORE, MARYLAND  
 ELECTED IN  
 5<sup>TH</sup> ELECTION DISTRICT HOWARD COUNTY, MD

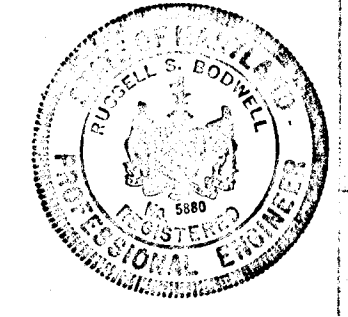
PREPARED BY  
 ENGINEERING DEPARTMENT, LEVITT & SONS, INCORPORATED

*R.S. Howell* - P.E. MD 5880  
 R.S. HOWELL CHIEF ENGINEER

DATE: AUG 9, 1968

SCALE: 1" = 30' HORIZ  
 5" VERT

DRAWING No. 49-9A01  
 SHEET 2 of 8

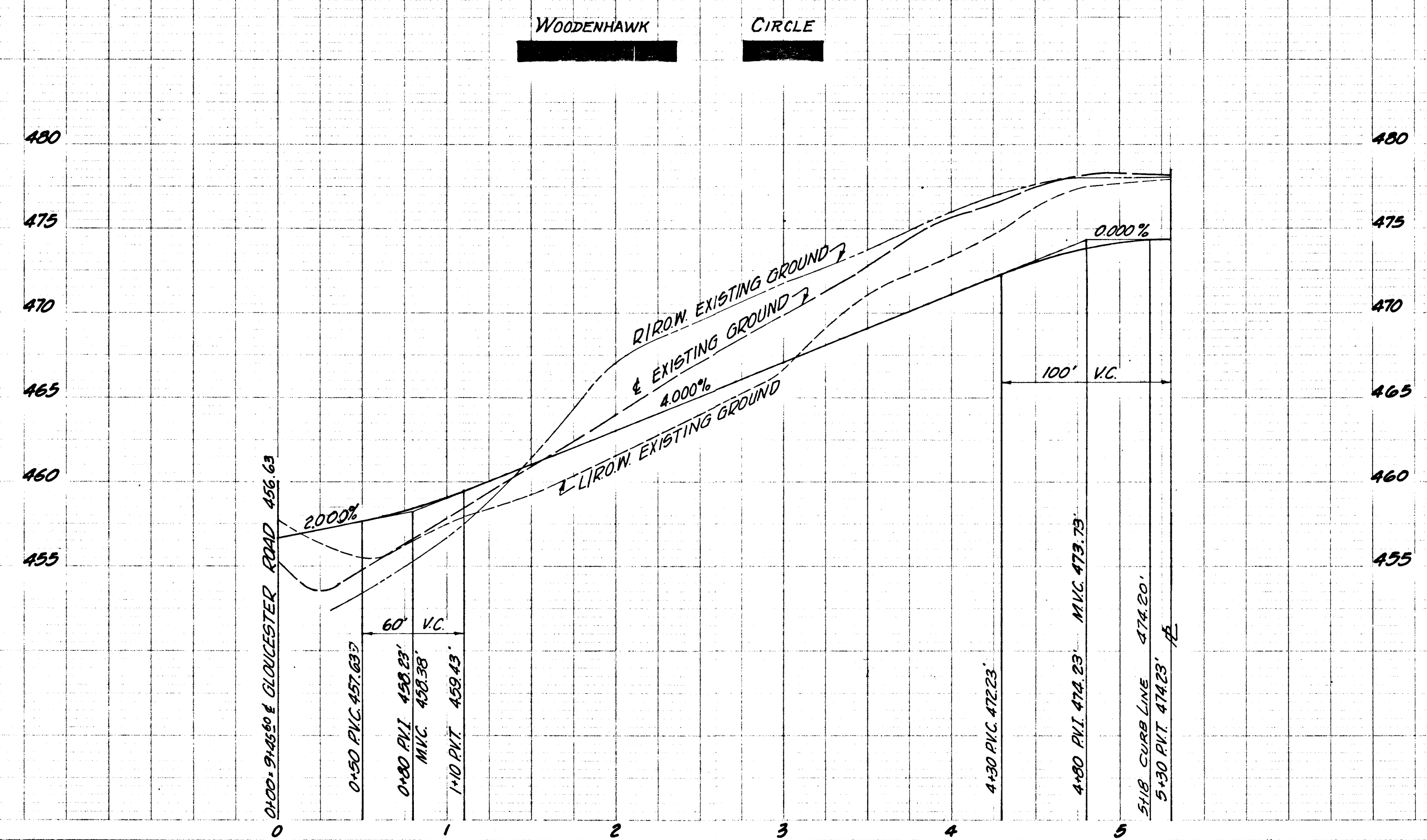


APPROVED: HOWARD COUNTY PLANNING COMM. 2-6-69  
*J.H. Clawson, Jr.*  
 Date

APPROVED: HOWARD COUNTY ROADS DEPT. 11-7-68  
*Kenneth M. Nelson*  
 Date

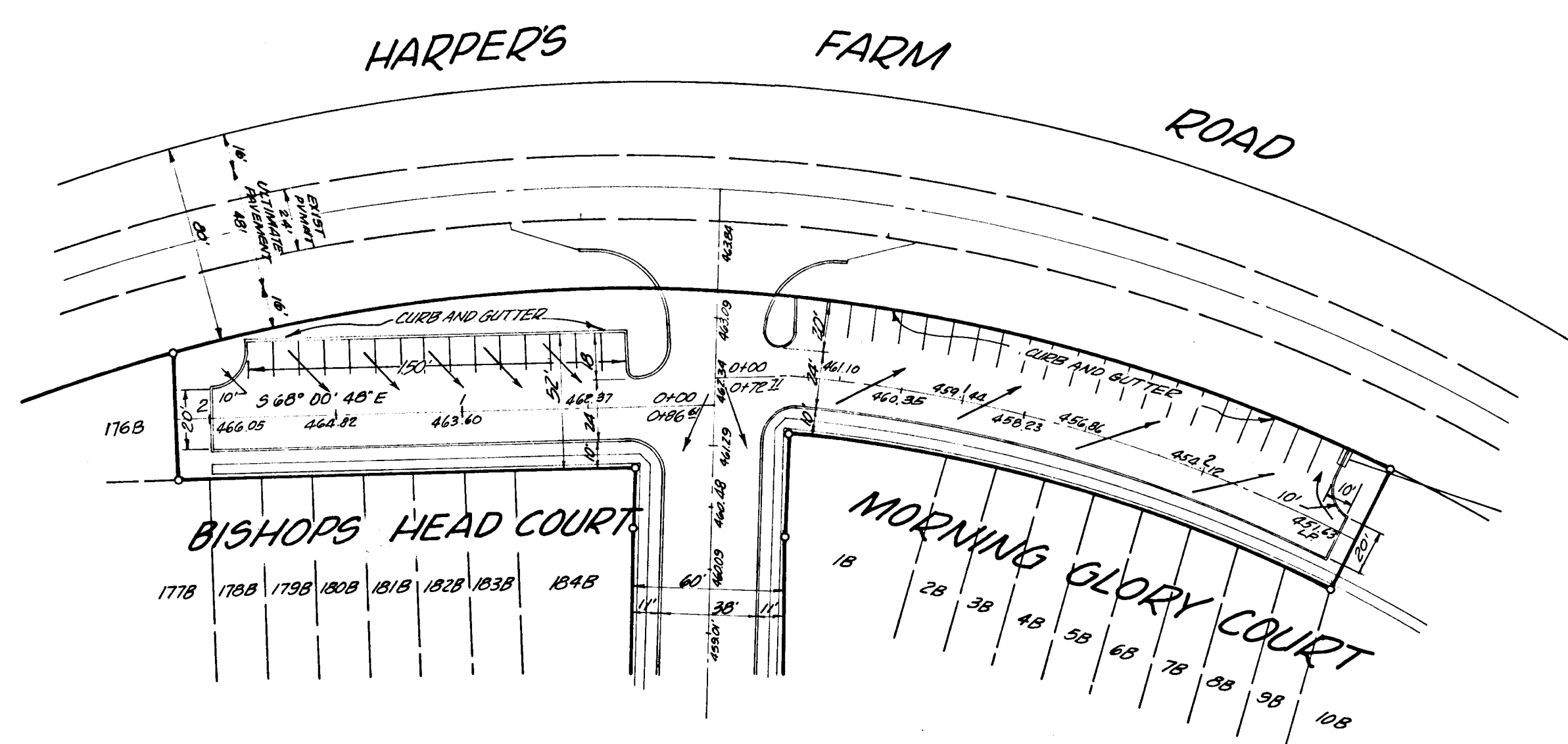
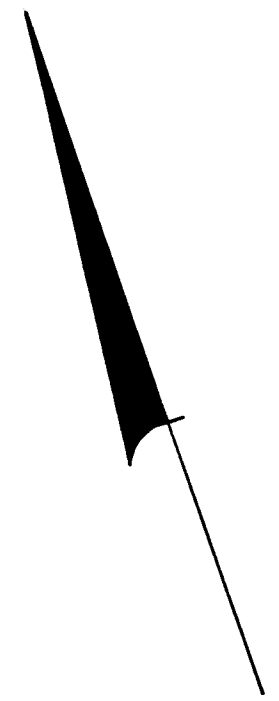
APPROVED: HOWARD COUNTY METROPOLITAN COMM. 12-30-68  
*W.O. Salt*  
 Date

REVISED AS PER PLANNING COMM. 1-31-69





PLAN  
 NOTE: SEE CROSS SECTION SHEET  
 NO. 1  
 DATE: 12-30-68



MINIMUM BUILDING SETBACK RESTRICTION FROM  
 PROPERTY LINE & RIGHT OF WAY OF ANY PUBLIC  
 ROAD OR STREET IS TO BE IN ACCORDANCE WITH  
 THE RECORDED FINAL DEVELOPMENT PLAN CRITERIA  
 ALL CORNER RADII TO BE 25' TO FACE OF CURB UNLESS  
 OTHERWISE NOTED (SEE DETAIL SHEET).  
 ALL CURBS & GUTTERS TO BE MOUNTABLE TYPE EXCEPT  
 AT INLETS AND NON-PARALLEL PARKING AREAS, AS NOTED.  
 (SEE ROAD CROSS SECTION ON DETAIL SHEET).

**STRATHMORE AT COLUMBIA**  
**PART I**  
**VILLAGE OF HARPER'S CHOICE**  
**SECTION 3, AREA 2, RESUB LOT 13 PART I**  
 OWNER & DEVELOPER  
**THE HOMER DEVELOPMENT CORP.**  
 C/O SMITH, SOMMERVILLE & CASE, 1100 ONE CHARLES CENTER  
 BALTIMORE, MARYLAND  
 5<sup>TH</sup> ELECTION DISTRICT, HOWARD COUNTY, MD.

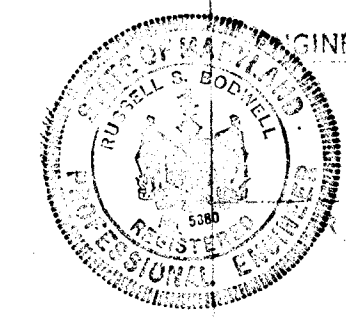
APPROVED HOWARD COUNTY PLANNING COMM.  
*J. H. Clauson, Jr.* 2-6-69  
 Date:

APPROVED HOWARD COUNTY ROADS DEPT.  
*Domènec R. Wehner* 11-7-68  
 Date:

APPROVED HOWARD COUNTY METROPOLITAN COMM.  
*W. O. Albert* 12-30-68  
 Date:

REVISED AS PER PLANNING COMMISSION  
 1-31-69

SCALE: 1" = 50'



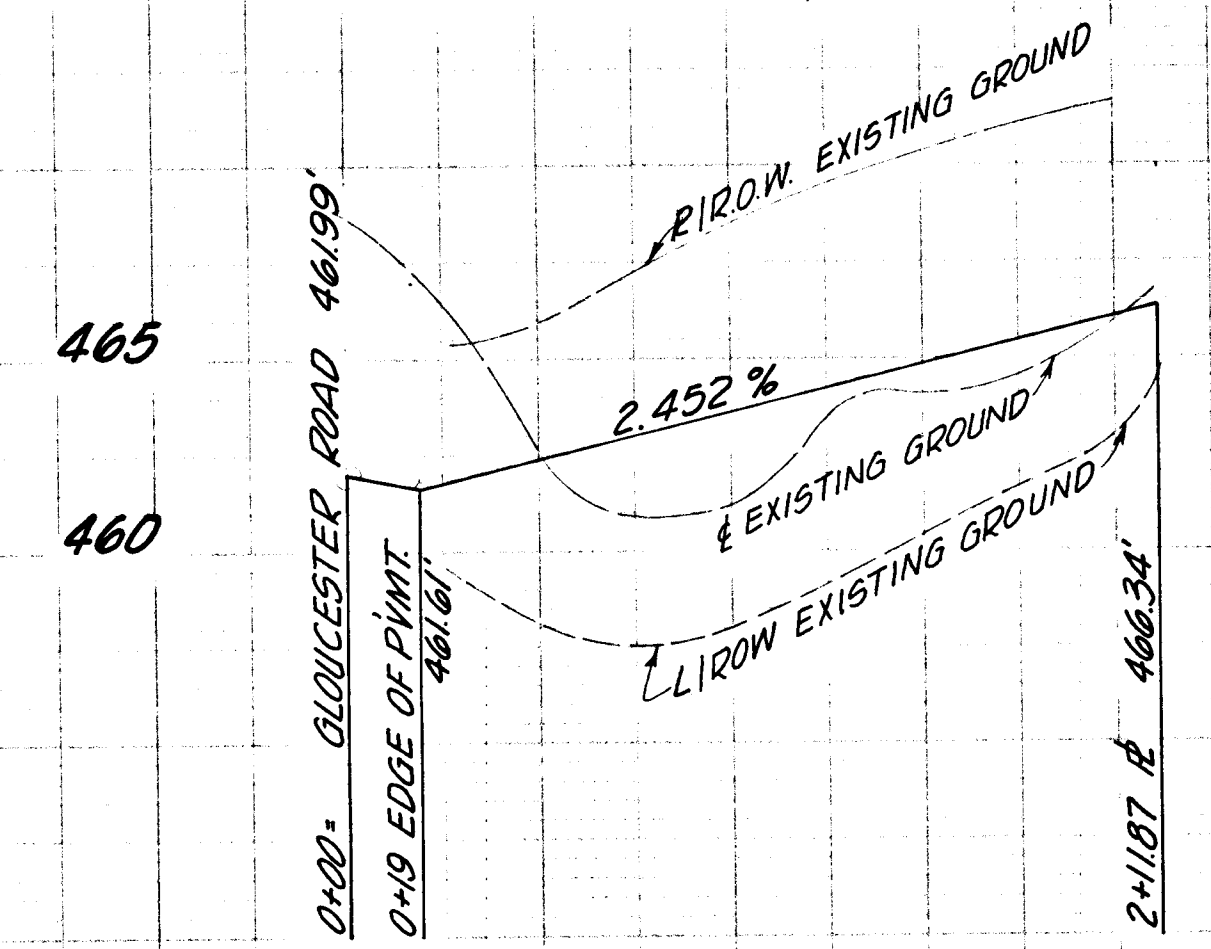
PREPARED BY  
 ENGINEERING DEPARTMENT LEVITT & SONS, INCORPORATED

*G. S. Bodwell* - P.E. MD 5800  
 CHIEF ENGINEER  
 DATE: AUG. 9, 1968

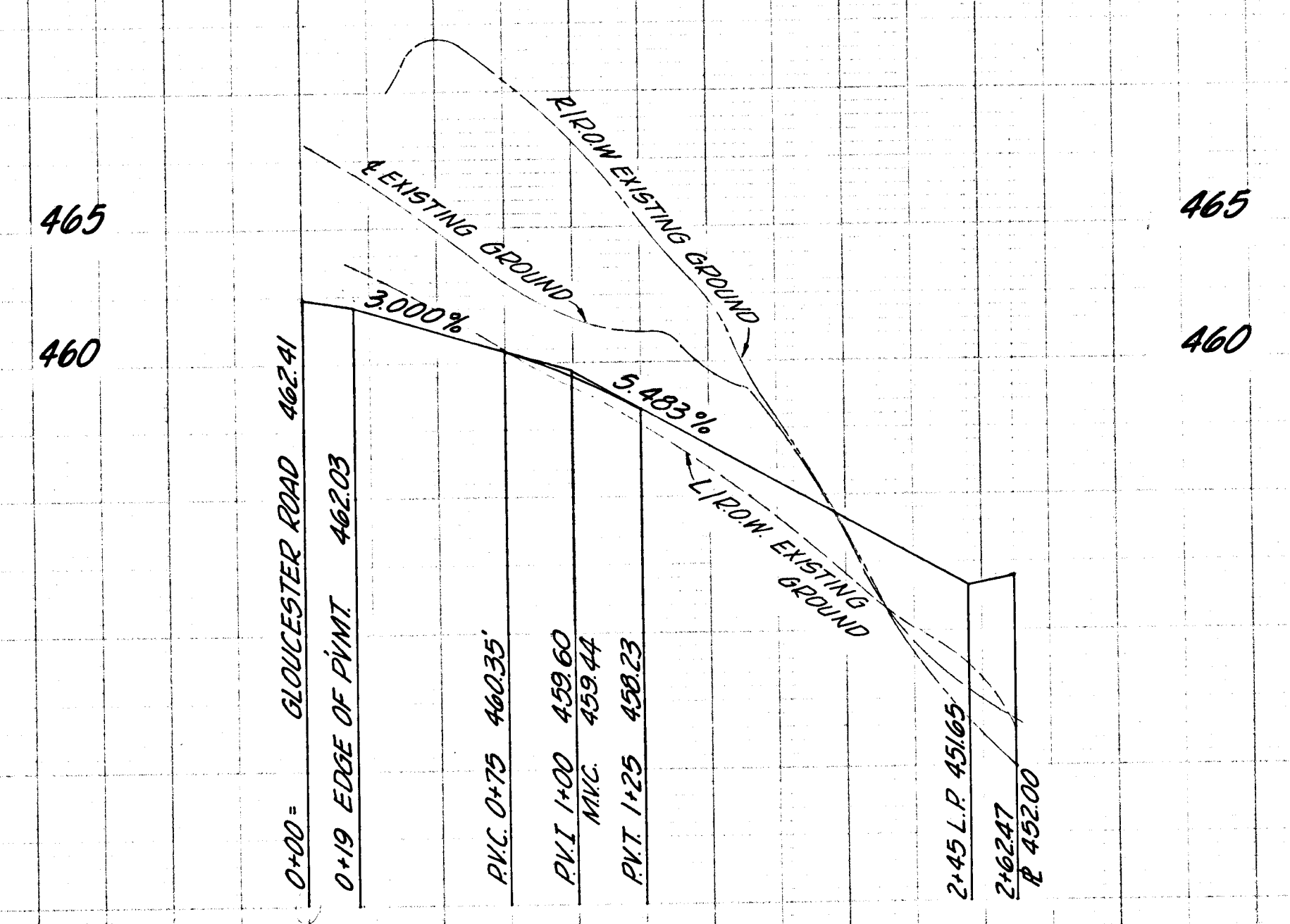
SCALE: 1" = 50' HORIZ  
 3" VERT  
 DRAWING No. 43-8403  
 SHEET 4 OF 8

PROFILE  
 NOTE: SEE CROSS SECTION SHEET  
 NO. 1  
 DATE: 12-30-68

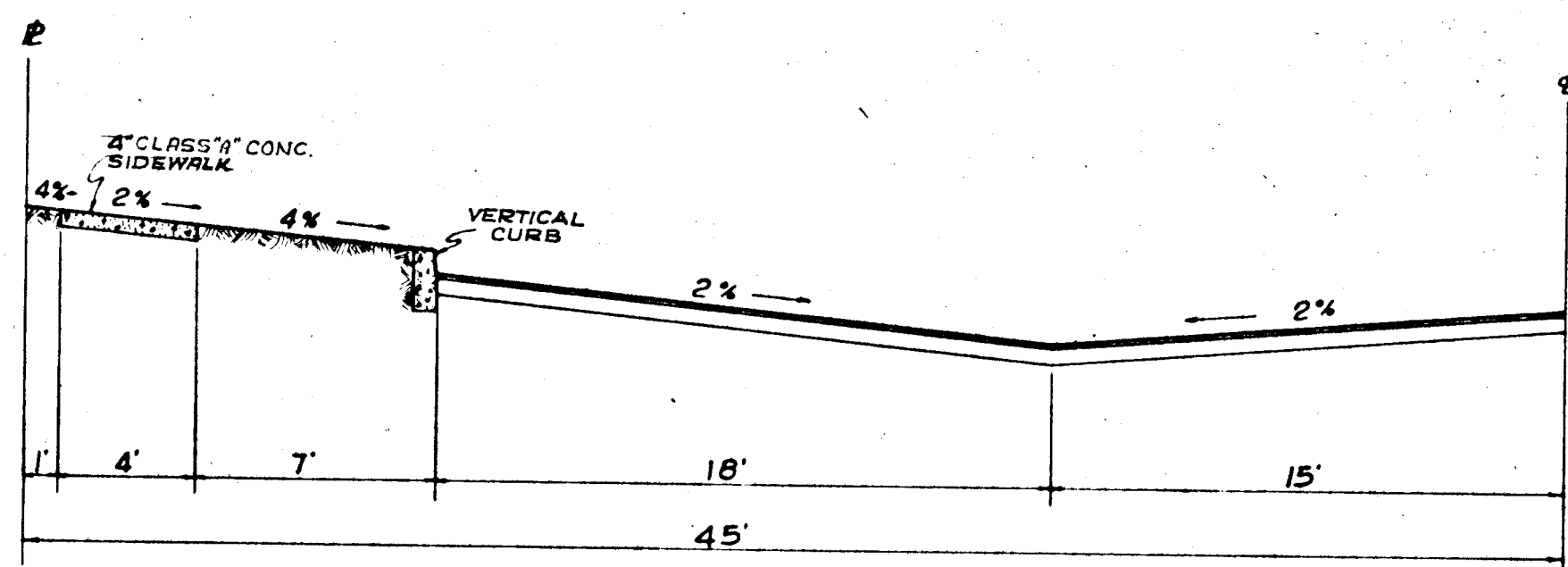
BISHOPS HEAD COURT



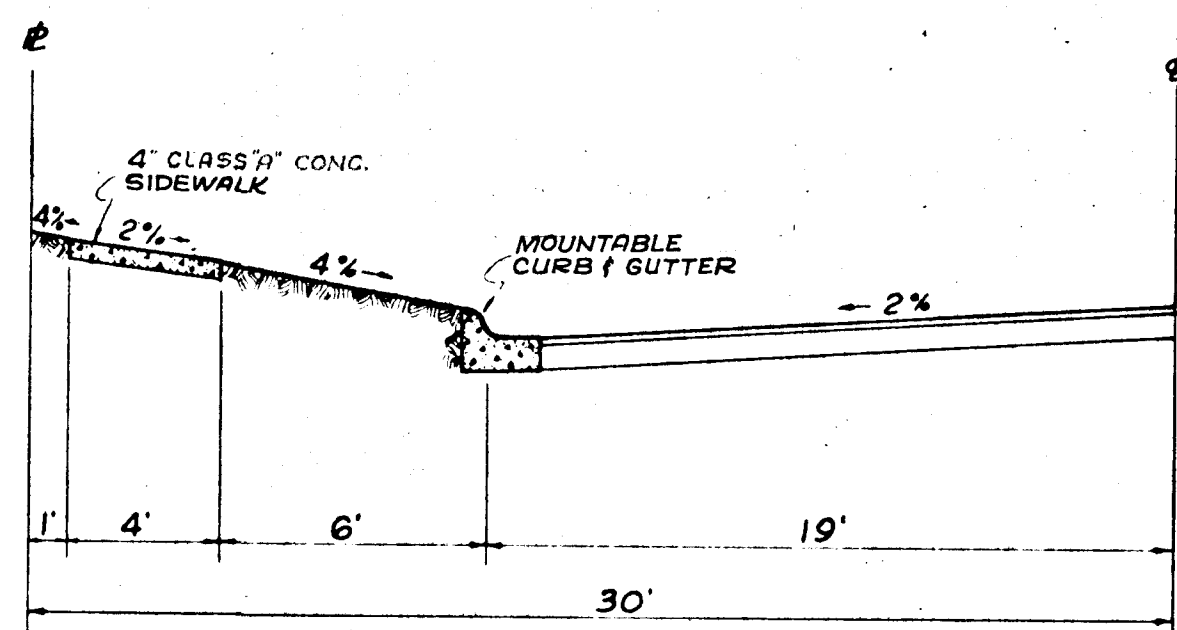
MORNING GLORY COURT



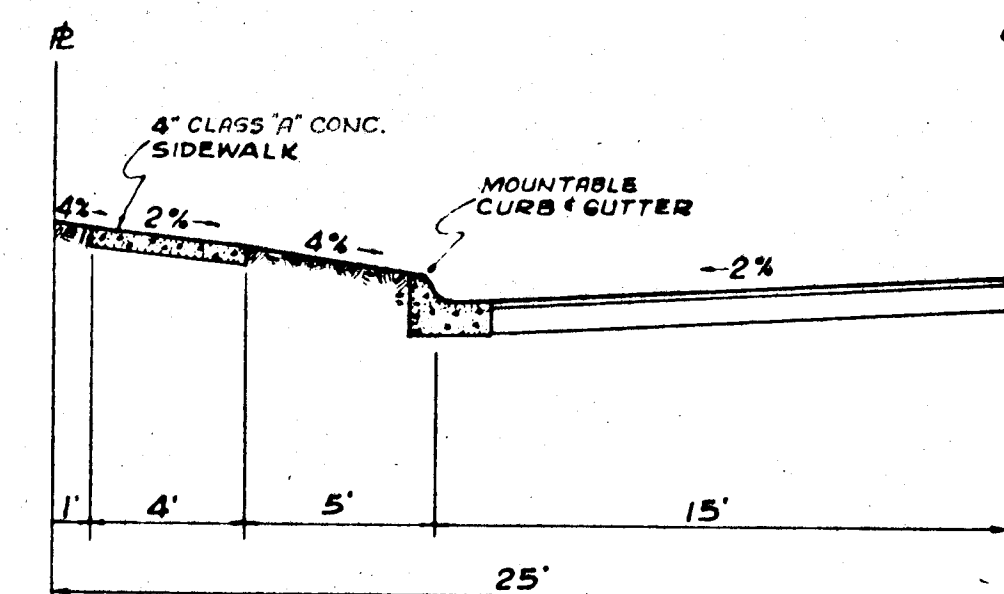
# TYPICAL ROAD HALF-SECTIONS



90' R.O.W.

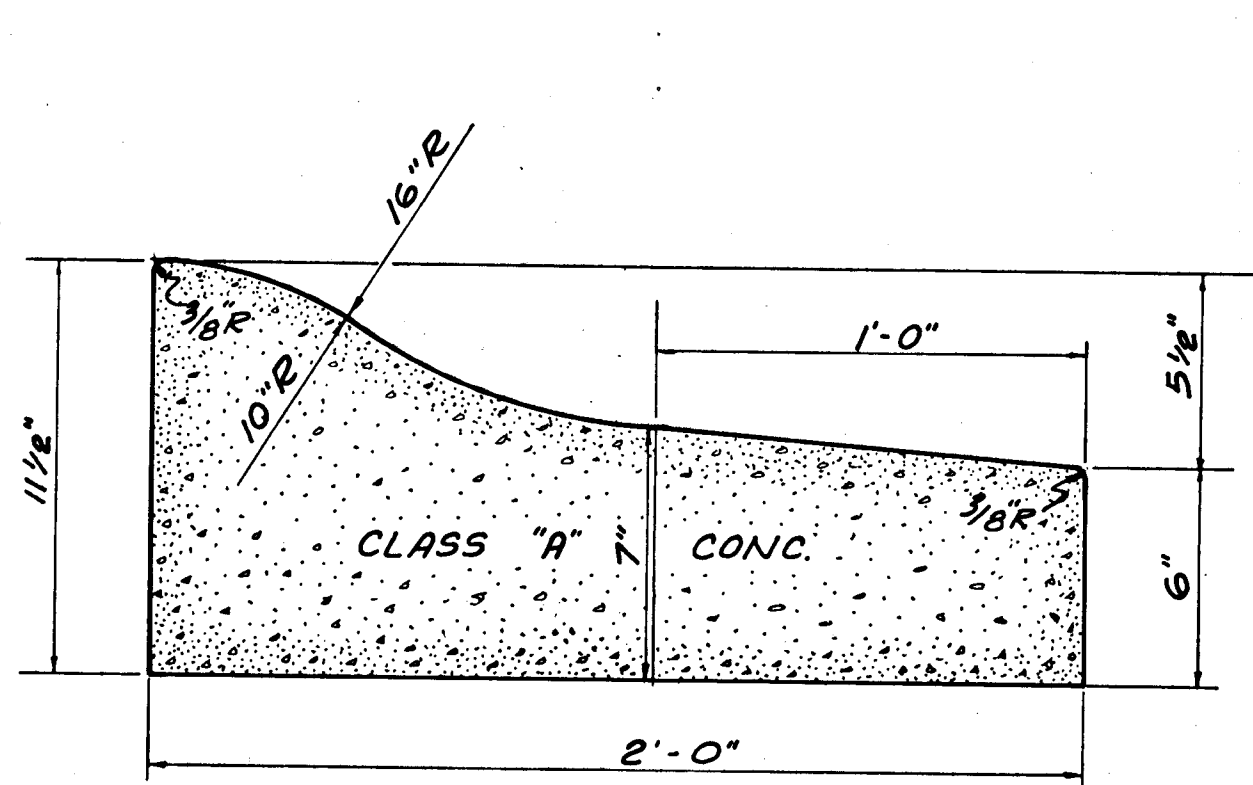


60' R.O.W.

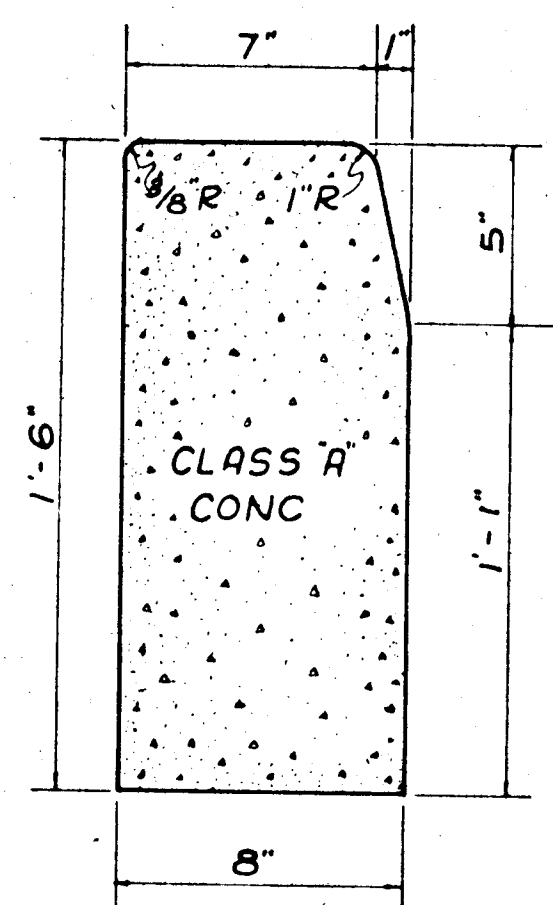


50' R.O.W.

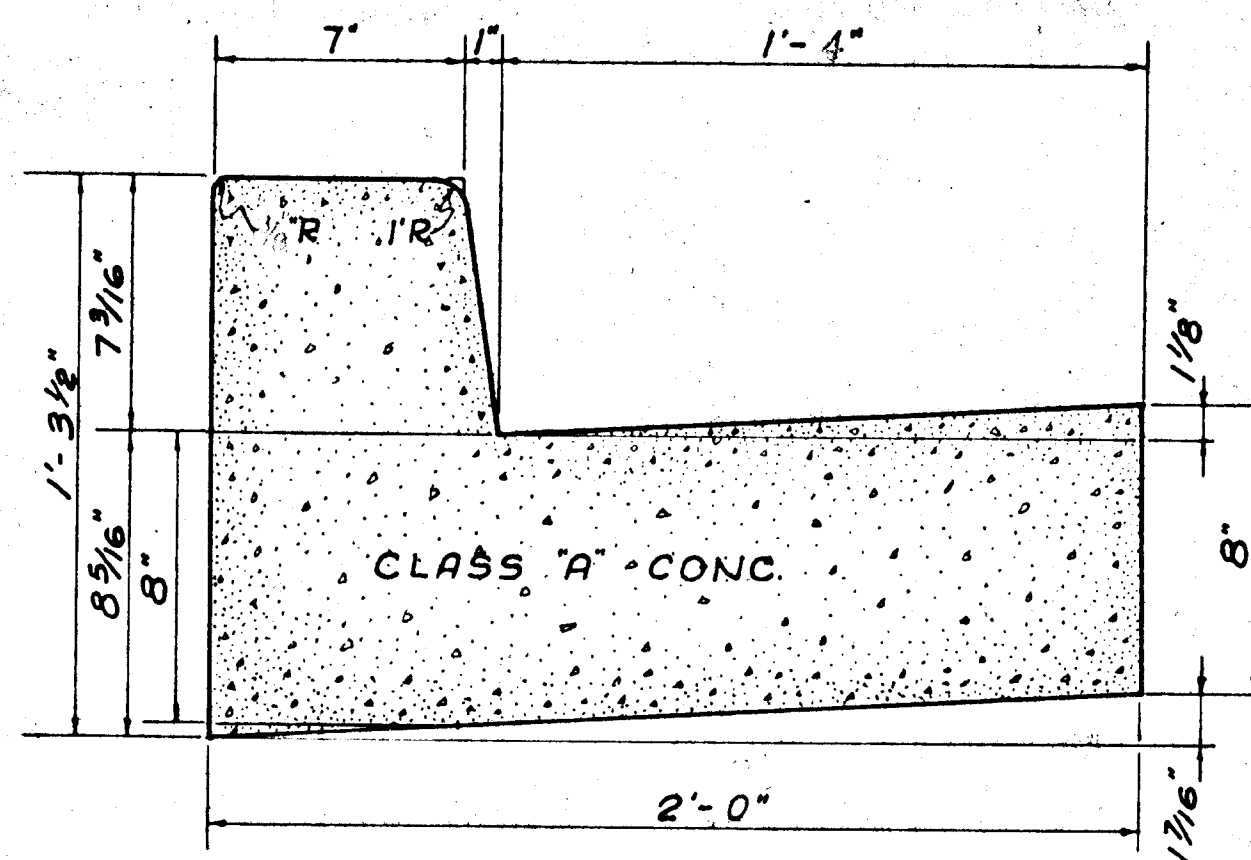
NOTE: PAVING SECTION TO CONSIST OF 5" BITUMINOUS CONCRETE BASE COURSE AND 1.5" BITUMINOUS CONCRETE SURFACE. CONSTRUCTED IN ACCORDANCE WITH THE HOWARD COUNTY ROAD CONSTRUCTION CODE AND SPECIFICATIONS.



REVERSE MOUNTABLE CURB & GUTTER DET.

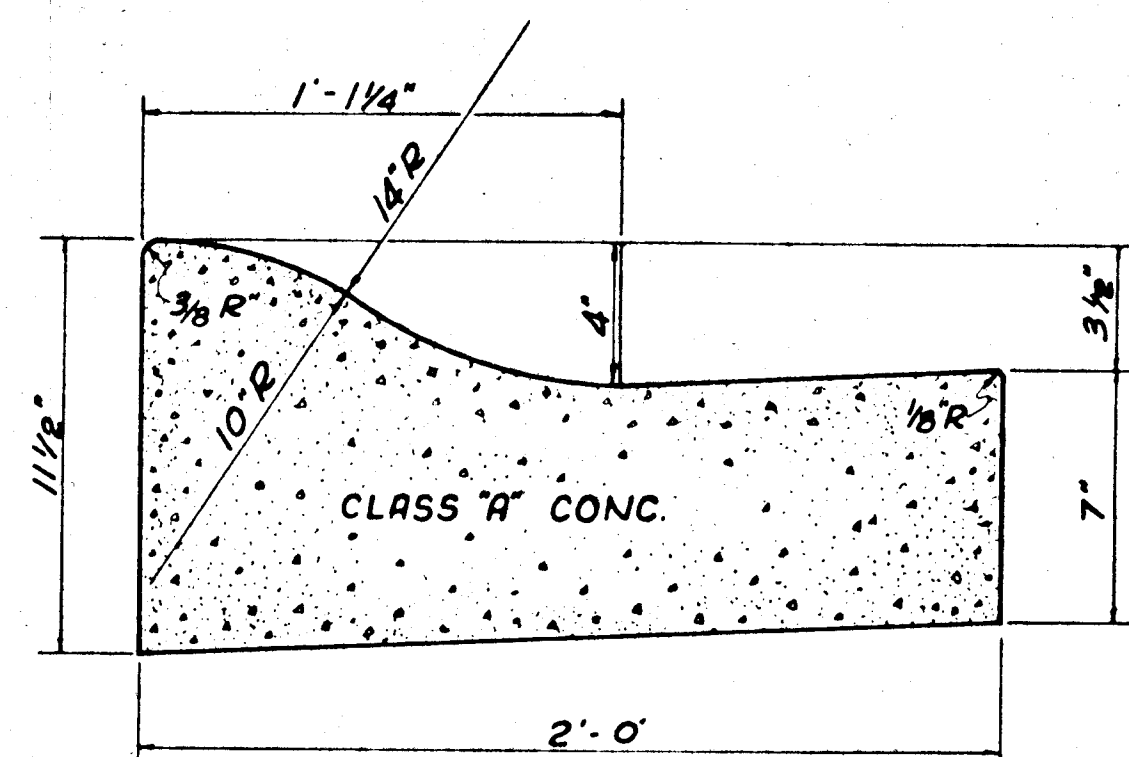


VERTICAL CURB



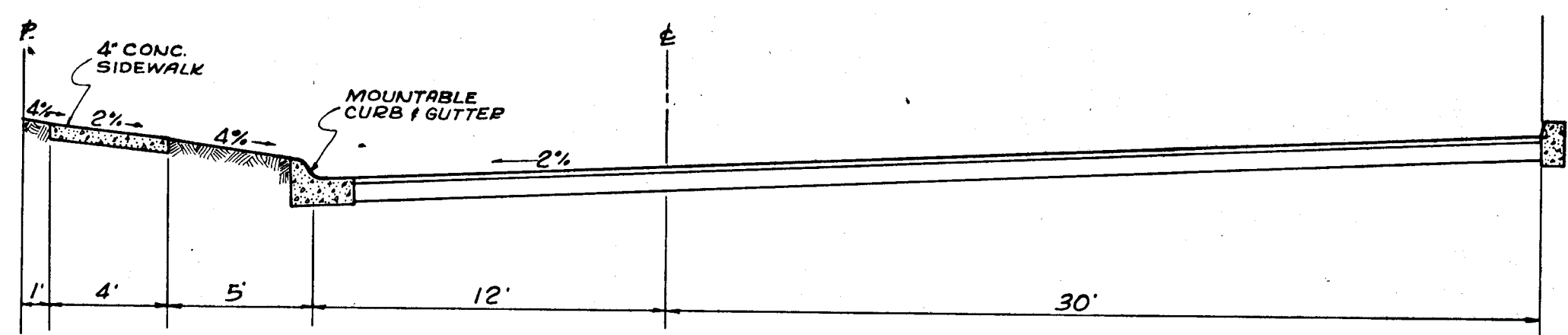
STD. 7" CURB & GUTTER

NOTE: TO BE USED AT CURB INLETS WITH A 10' TRANSITION FROM MOUNTABLE CURB.

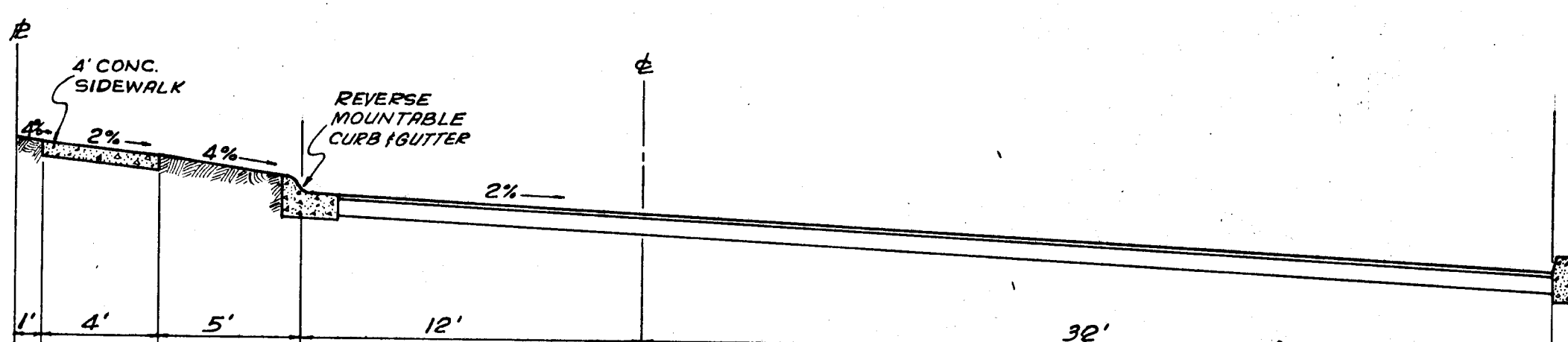


MOUNTABLE CURB & GUTTER DET.

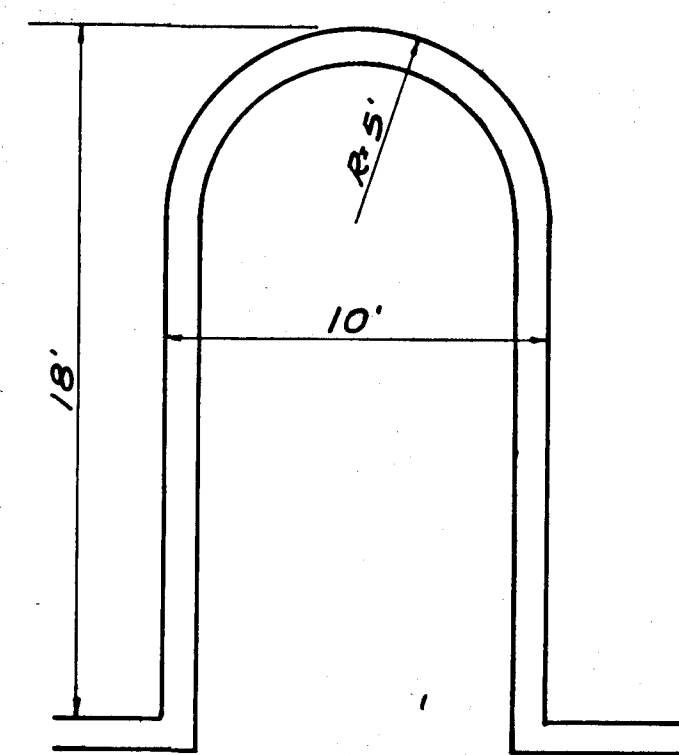
APPROVED  
PLANNING COMMISSION  
OF HOWARD COUNTY  
DATE: 2/16/69  
*[Signature]*



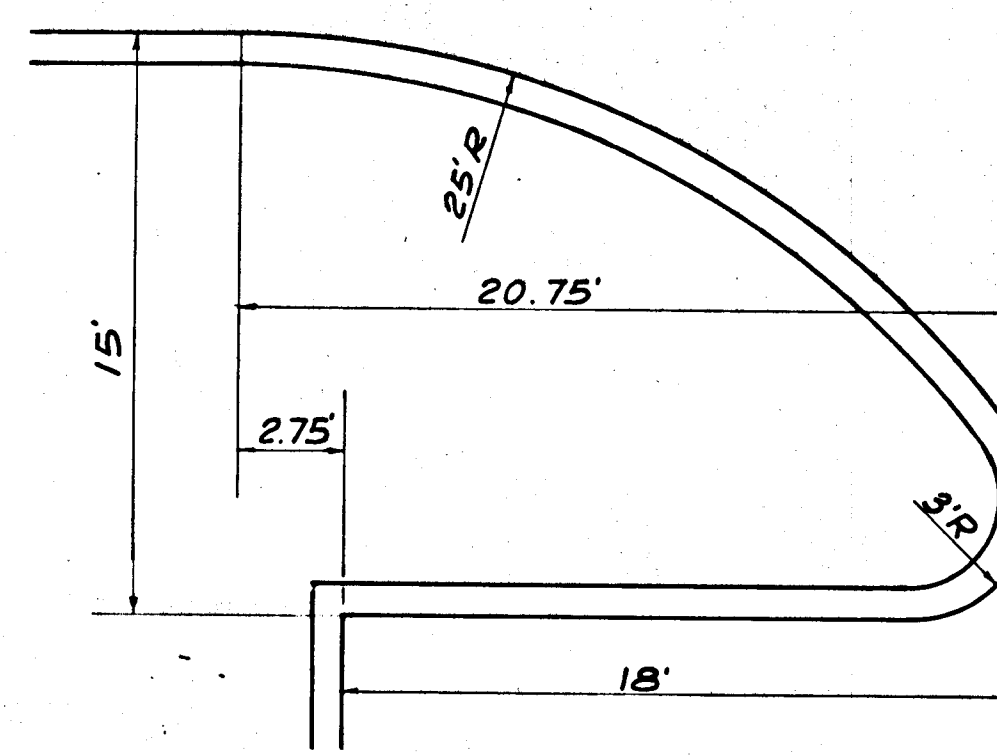
BISHOPS HEAD COURT.



MORNING GLORY COURT



TYPICAL CURB DETAIL OF PARKING AREA DIVIDER



TYPICAL CURB DETAIL OF ENTRANCE TO PARKING AREA

APPROVED: HOWARD COUNTY PLANNING COMM.			
<i>[Signature]</i>		2-6-69 Date	
APPROVED: HOWARD COUNTY ROADS DEPT.			
<i>[Signature]</i>		Date	
APPROVED: HOWARD COUNTY METROPOLITAN COMM.			
<i>[Signature]</i>		Date	
REVISIONS			
NO	DATE	SUBJECT	CHECKED

**ROAD DETAILS**  
**STRATHMORE AT COLUMBIA**  
PART 1  
**VILLAGE OF HARPER'S CHOICE**  
SECTION-3, AREA-2.

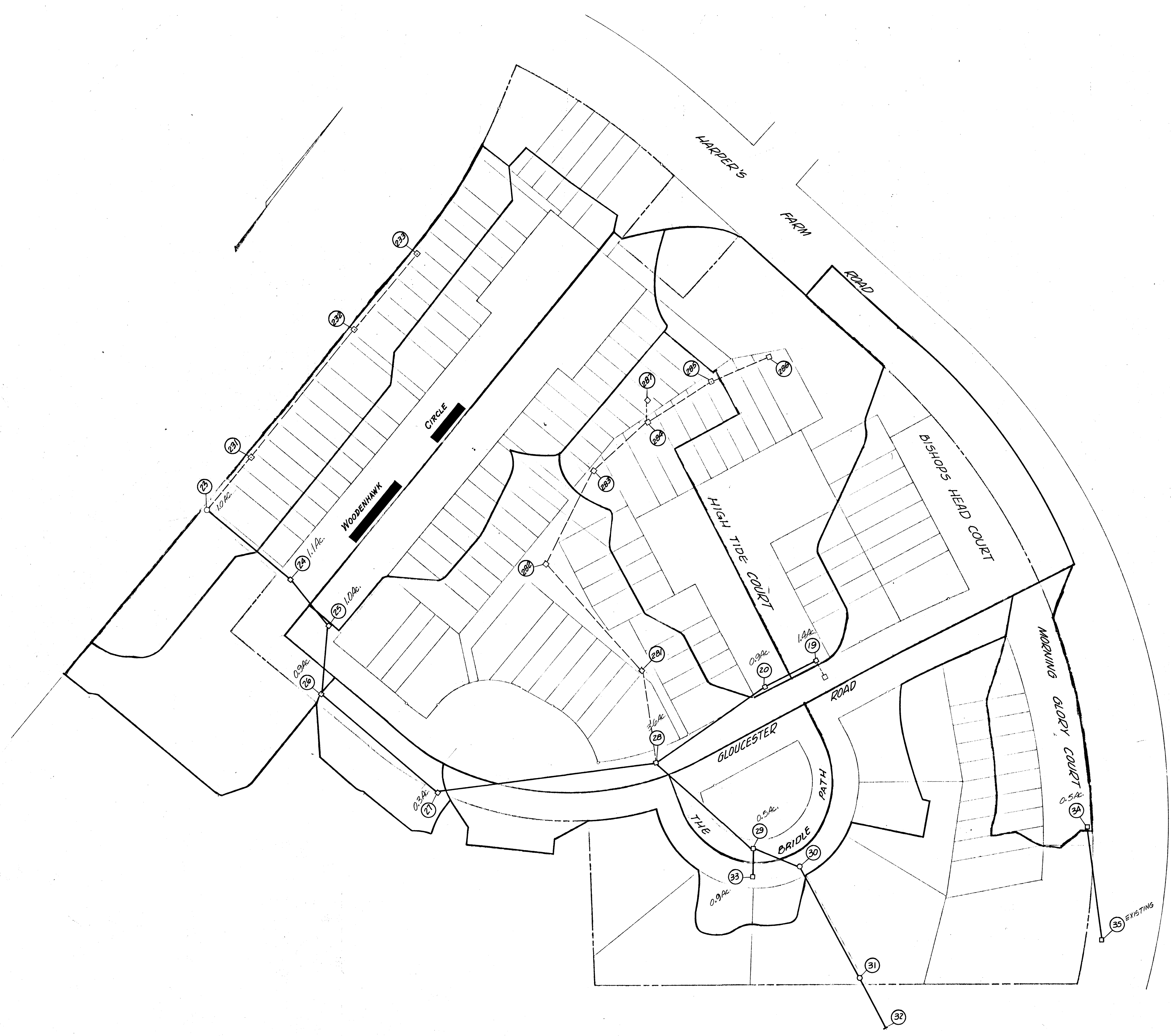
5<sup>TH</sup> ELECTION DISTRICT, HOWARD CO., MD.  
OWNER & DEVELOPER:  
THE HOMER DEVELOPMENT CORP.  
60 SMITH, BOWMILLS & COPE, 1700 FINE CHANNES CENTER  
BALTIMORE, MARYLAND

DESIGNED BY  
ENGINEERING, DEPT. LEVITT AND SONS, INCORPORATED  
LANS SUCCESS, NEW YORK

EXECUTIVE ENGINEER  
*[Signature]*  
APPROVED BY:  
DATE: 2/10/68

R.S. BODWELL CHIEF ENGINEER  
DATE: 2/10/68

SCALE: NO SCALE DRAWING No. 43-7000

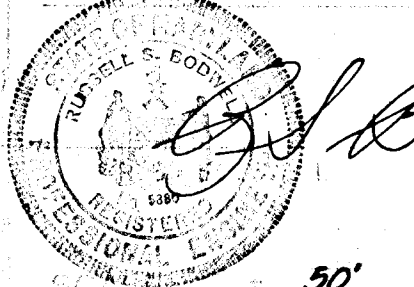


#11  
R.T.T.B.

**APPROVED**  
 PLANNING COMMISSION  
 OF HOWARD COUNTY  
 DATE 2/12/69  
*[Signature]*

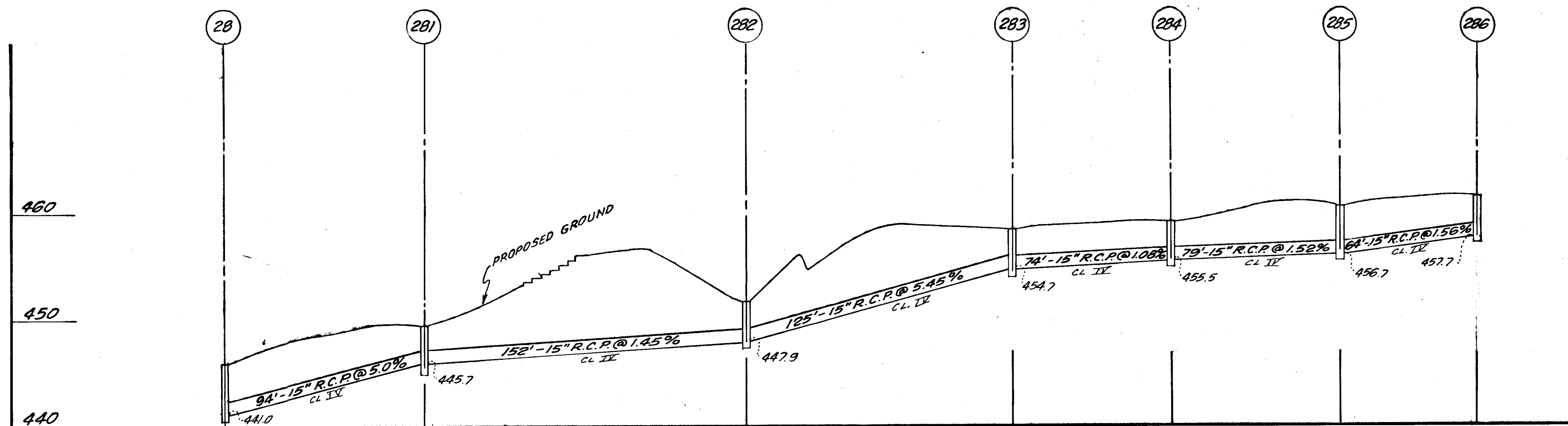
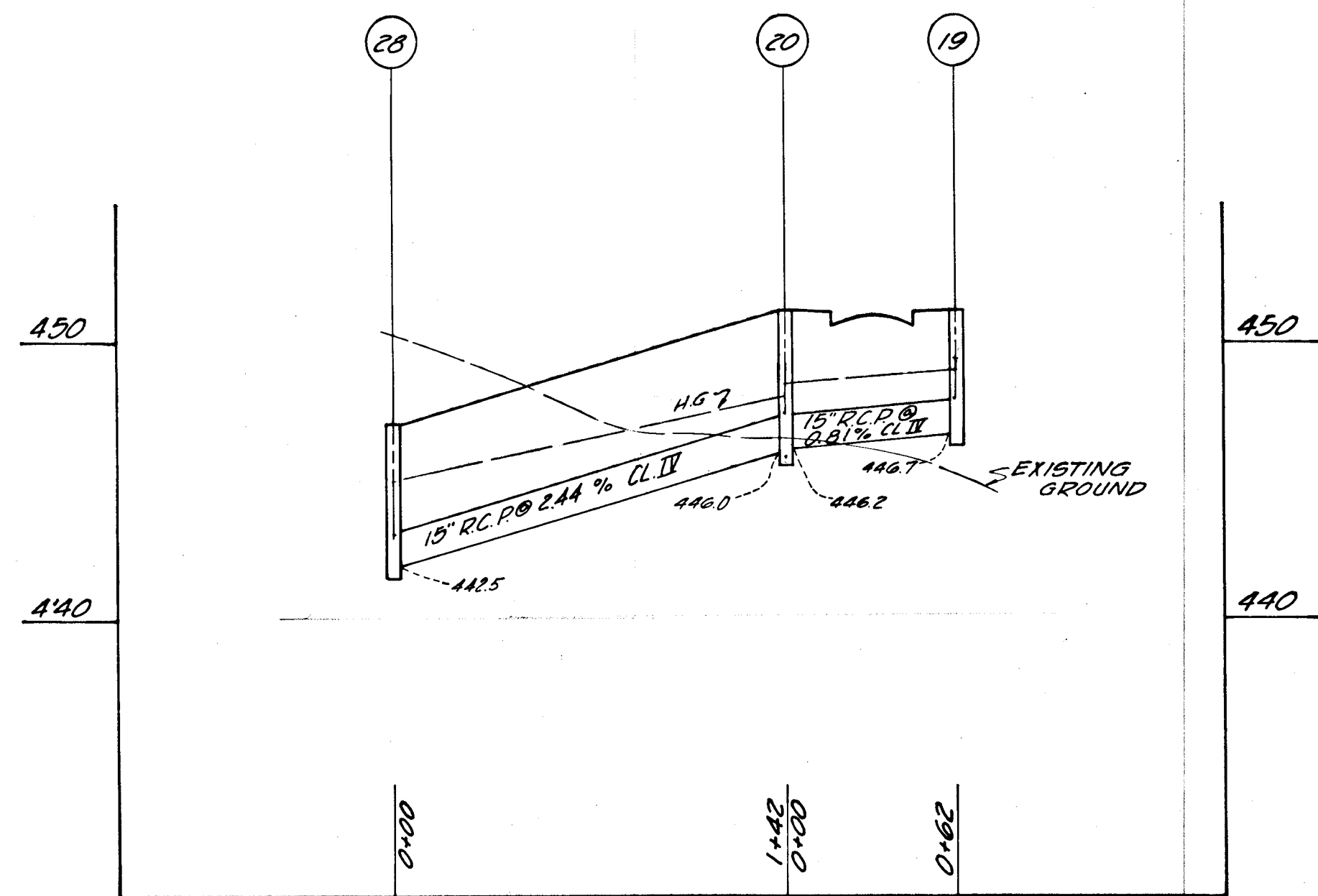
**DRAINAGE AREA MAP**  
 STRATHMORE AT COLUMBIA  
 PART I  
 VILLAGE OF HARPER'S CHOICE  
 SECTION 3, AREA 2, RESUB LOT 13, PART 1  
 PREPARED BY  
 5<sup>TH</sup> ELECTION DISTRICT, HOWARD COUNTY, MD.

PREPARED BY  
 ENGINEERING DEPARTMENT, LEVITT & SONS, INCORPORATED  
*[Signature]* - P.E. MD. 5880  
 DATE AUG. 9, 1968  
 REV. 1-31-69  
 DRAWN BY M.D.  
 SHEET 1 OF 2



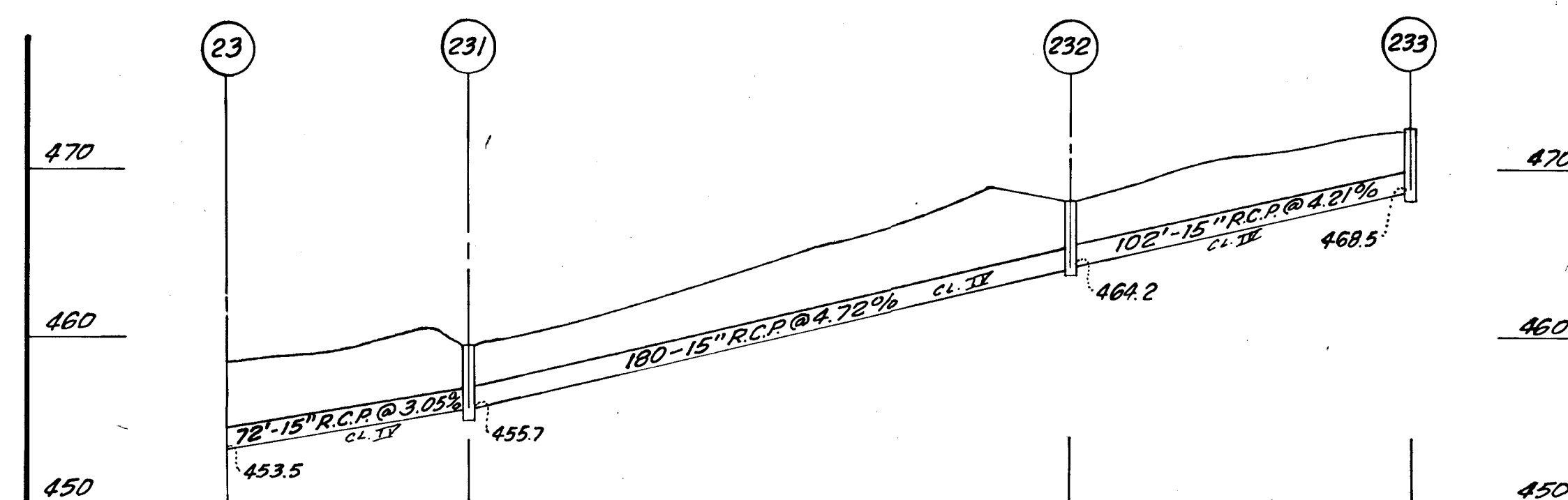
50' SCALE  
 F-6-56





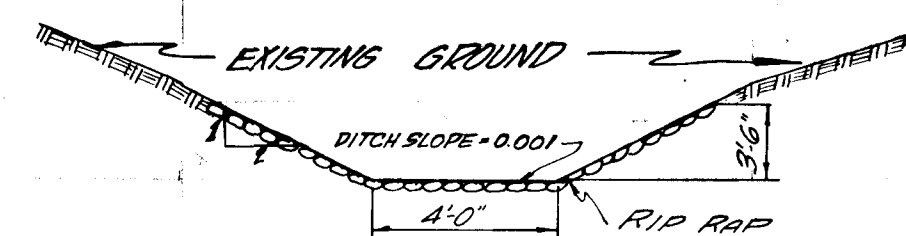
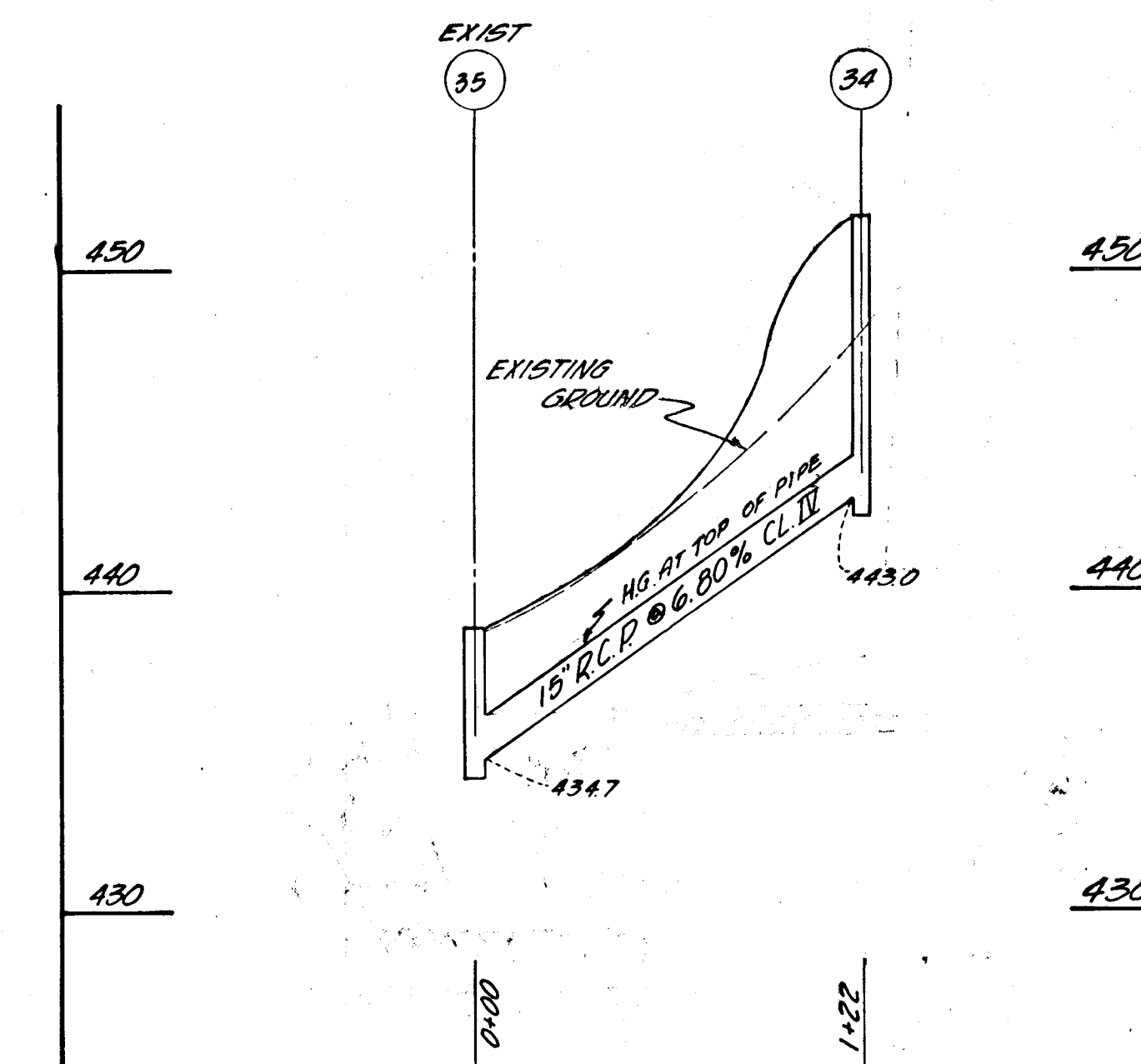
PROFILE REAR YARD DRAINAGE  
LOTS 126B THRU 175 B

SCALE: VERT. 1"=8'  
HORIZ. 1"=40'



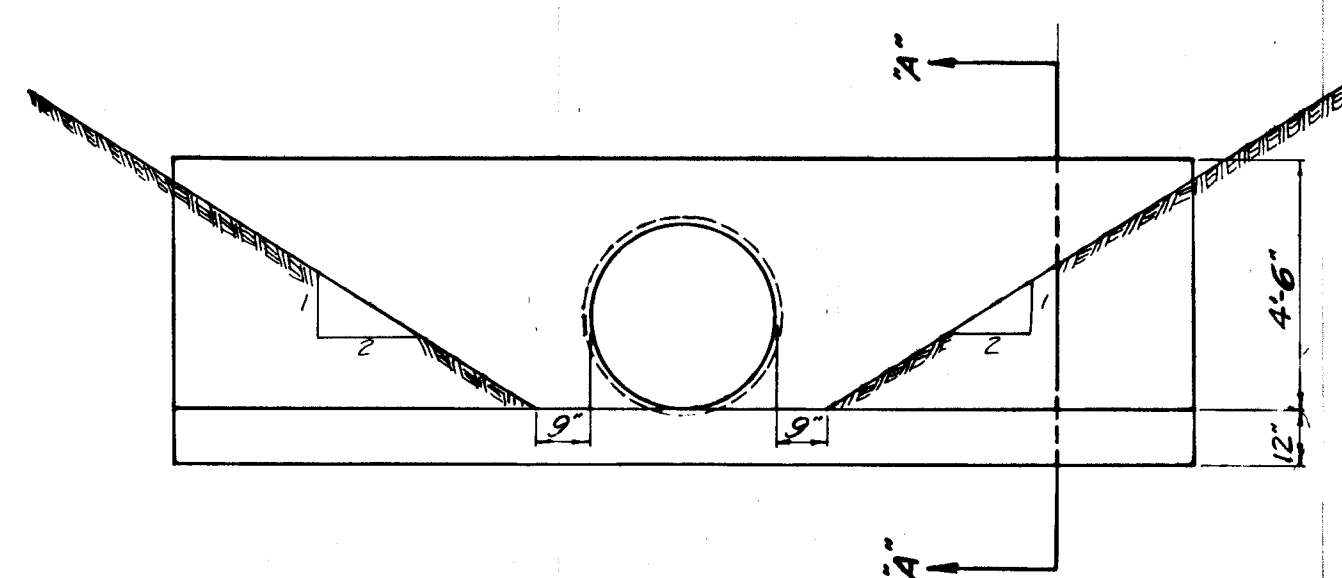
PROFILE REAR YARD DRAINAGE  
LOTS 99B THRU 114B

SCALE: VERT. 1"=8'  
HORIZ. 1"=40'

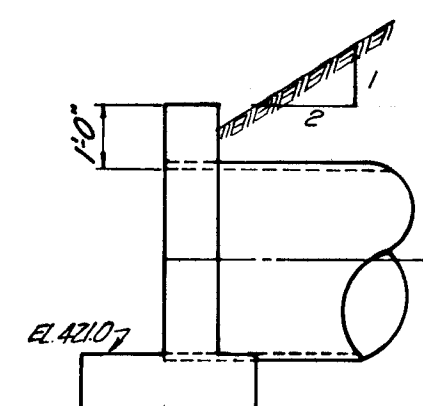


CHANNEL SECTION  
NO SCALE

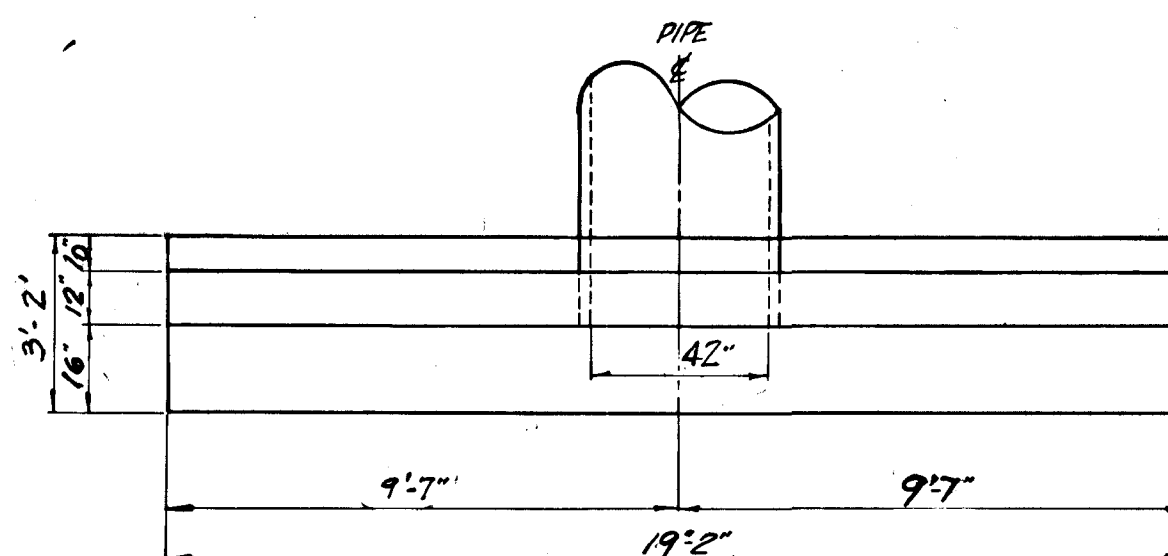
STANDARD TYPE "C" ENDWALL



ELEVATION



SECTION "A-A"



PLAN

NOTE: FOR DETAILS NOT SHOWN SEE  
HOWARD COUNTY ROAD CONSTRUCTION  
CODE AND STANDARD SPECIFICATIONS  
DATED NOV. 27, 1962 WITH ALL SUBSEQUENT  
REVISIONS, DING. N° D-52, PAGE 107.

REVISIONS			
NO.	DATE	SUBJECT	CHECKED
1	12-6-68	ENDWALL DETAIL CHANGED	JCB
2	1-31-69	ADDED REAR YARD DRAINS	

DRAINAGE PLAN AND PROFILE  
STRATHMORE AT COLUMBIA  
SECTION 1  
VILLAGE OF HARPERS CHOICE  
SECTION-3, AREA-2 RESUB LOT-13, PART-1  
5<sup>TH</sup> ELECTION DISTRICT, HOWARD CO., MD.

APPROVED  
PLANNING COMMISSION  
OF HOWARD COUNTY  
DATE: 7/16/69

EXECUTIVE ENGINEER

APPROVED BY:  
DATE: 8/17/68

PREPARED BY:  
PARTMENT, LEVITT & SONS, INCORPORATED  
CHIEF ENGINEER  
DATE: AUG. 9, 1968  
SCALE: 1"=5' HORIZ.  
5' VERT.  
DRAWING No. 43-7551

