

VICINITY MAP
SCALE: 1" = 2000'

Based 2-A-1 per resolution of Howard County Zoning Commission Case No. H.C.C. 357, dated 9 July 1964.

SITE ANALYSIS

Area of Site (Net):
Acres: 2.967
sq. ft.: 128,502

Unit Count:
Allowable @ 2500 sq. ft./unit - 45.8
Provided @ 3212.5 sq. ft./unit - 40

Coverage:
Allowable @ 20% of tract - 25,700 sq. ft.
Provided @ 10% of tract - 12,850 sq. ft.

Parking:
Required - 1/2 spaces/dwelling unit - 60 spaces
Provided - 60 spaces

Units:
No. 1 Bedroom units - 20
Area of smallest 1 Bdrm. unit - 617 sq. ft.
No. 2 Bedroom units - 14
Area of smallest 2 Bdrm. unit - 792 sq. ft.

COMPUTATION OF INLET TYPES

INLET No.	AREA ACRES	TIME	I In/hr	C	CA	Q C.F.S.	ST. SLOPE	INLET TYPE	TOILET CAP	REMARKS
1	1.1	10	5.8	0.82	0.90	5.2	13.0%	Sump "A"	7.5	
2	1.5	12	5.5	0.60	0.90	5.0	13.0%	Sump "A"	7.5	
3	0.2	5	6.8	0.90	0.18	1.2	13.0%	Comb	1.4	
4	2.5	12	5.5	0.40	1.00	5.5	8.0%	Comb	6.5	

OWNER & DEVELOPER
VALLEY CREST INC.
11530 Ellicott Pike, Ellicott City, Md.

RECEIVED
AUG 7 1968
HOWARD COUNTY
PLANNING COMMISSION

SHEET 1
PROPOSED LAYOUT AND GRADING PLAN
VALLEY CREST APARTMENTS
2ND ELECT. DIST. - HOWARD Co., MD.
SCALE: 1" = 30'

GENERAL NOTES:

- 1) For dimensions, setbacks & yard areas, see Sht. No. 2.
- 2) All retaining walls to be built to elevations shown.
- 3) All fillets & roundings to be 5' radius unless noted.
- 4) Elevations based on Bench Mark - W.R. & A. 53-F. (Elev. 302.28 - R.R. Spike in base of Pole # 20 1/2)
- 5) For details of Entrance @ Columbia Pike, see Sht. No. 2
- 6) For details of:
 - 1) Type "A" comb Inlet - dwg. D-79, page 134
 - 2) Type "E" comb Inlet - D-65, - 123
 - 3) Standard Junction Box - D-105, - 163
 - 4) Bit. Mountable Curb - D-39, - 94

* Howard County Road Building Code & Standard Specifications.
7) For location and details of Sanitation and Water Supply Systems, see Sht. No. 2.

APPROVED: HOWARD COUNTY PLANNING COMM.
Date: _____

2 August 1968
Date
Paul J. ...
Reg. No. 2551

COMPUTATION OF PIPES

No.	REMARKS	AREA AC	TIME	I In/hr	C	CA	Q C.F.S.	ST. SLOPE	PIPE SIZE	VEL. FT.
A	To Inlet 4	3.9	12	5.5	0.4	1.00	12	13.0%	15"	8.95
E		0.2	5	6.8	0.9	0.18	5	13.0%	12"	1.2
A-B		2.7	12	5.5	0.9	1.18	12	13.0%	15"	14.0
C		1.5	12	5.5	0.9	0.90	12	13.0%	15"	11.2
A-C		4.2	12	5.5	0.9	2.08	12	13.0%	15"	15.0
D		1.1	10	5.8	0.9	0.90	10	13.0%	15"	9.50
A-D		5.3	12	5.5	0.4	2.98	12	13.0%	15"	8.50

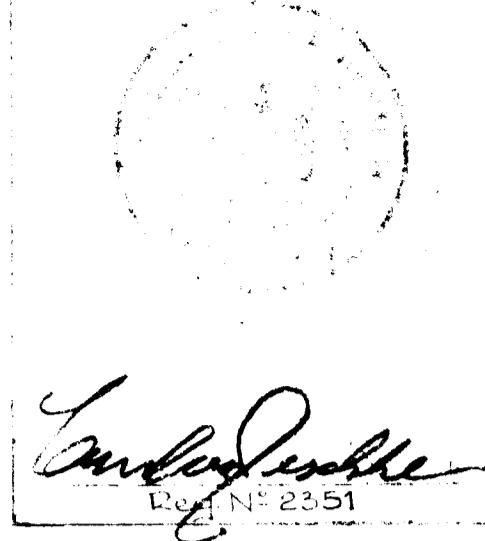
Site plan approved on _____ by a majority of the Howard County Planning Commission.
PLANNING DIRECTOR
APPROVED: HOWARD COUNTY HEALTH DEPARTMENT
County Health Officer _____ Date _____
APPROVED: HOWARD COUNTY ROADS DEPARTMENT
Roads Department _____ Date _____
APPROVED: HOWARD COUNTY METROPOLITAN COMM.
Chief Engineer _____ Date _____

179
PURDUM & JESCHKE
CONSULTING ENGINEERS
AND LAND SURVEYORS
24 PARK AVENUE
ELLCOTT CITY, MARYLAND

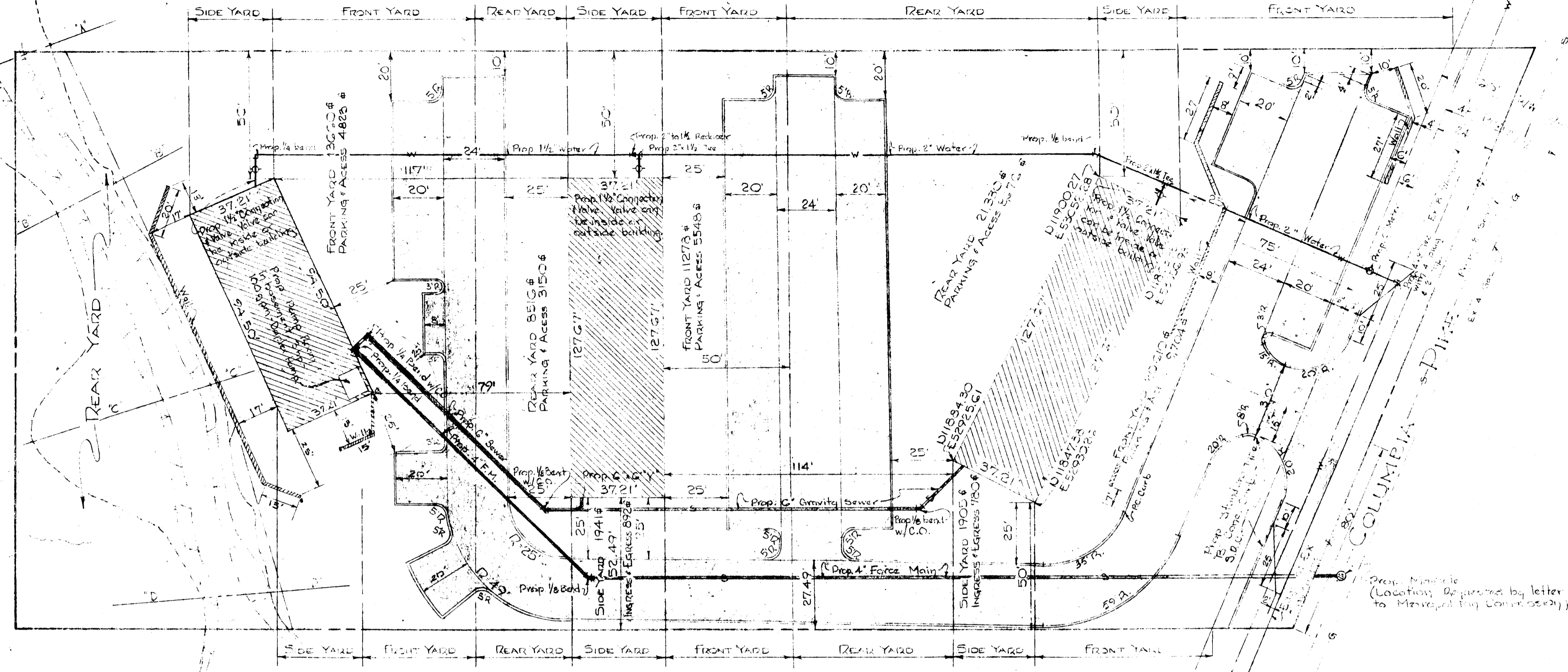
179

F-68-59

2 August, 1968
Date



PLAN
SURVEYED, PLOTTED, GRADES CHECKED, RT. OF WAY CHECKED.
NOTE BOOK NO. _____
BY _____ DATE _____



- SEWAGE PUMP INFORMATION**
- 1) 24" duplex pump - w/ail - C-170 (4" dia. 24")
 - 2) 24" - 100 gpm - 50' hd - 3 ph. - 3 phase.
 - 3) Wet Well - 12' dia - 4' deep - cast iron cov.
 - 4) Basin Cover - 24"
 - 5) Electric Alternator - 100'
 - 6) Float switches - 2 ea.
 - 7) Magnetic starters - 2 ea.
 - 8) High water alarm with bell - 1 ea.

ENGINEERS
PORDUM FJESCHKE
LAND SURVEYORS
24 PARK AVE
ELICOTT CITY, MARYLAND

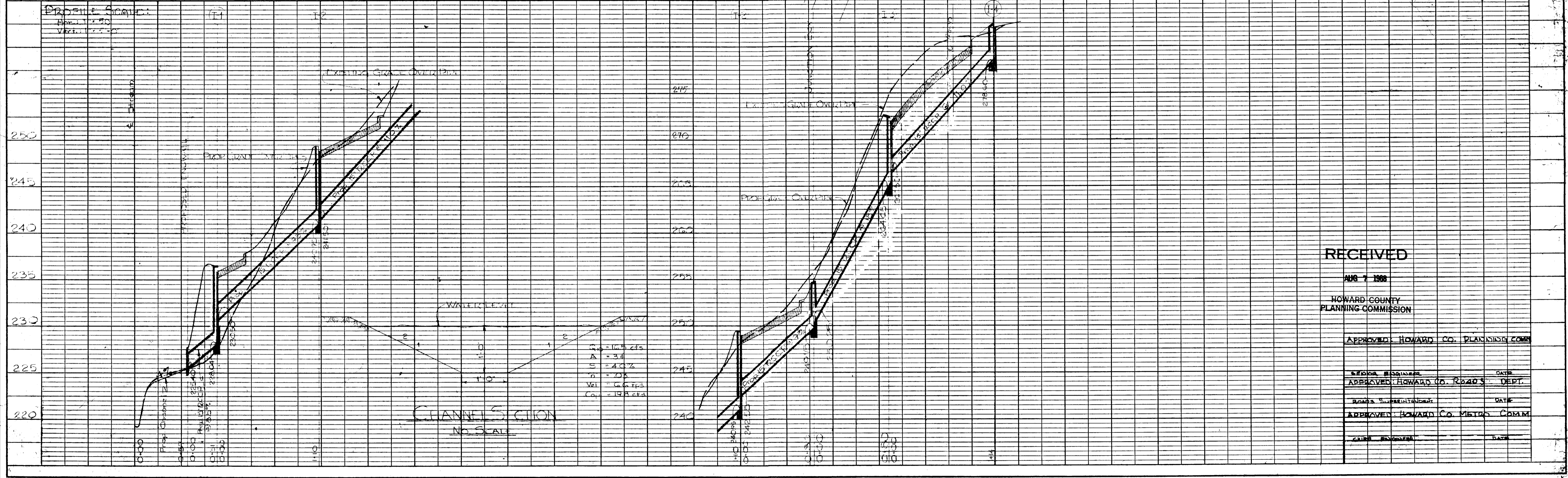
SHEET 2
DETAIL SHEET

DETAIL PLAN
Scale: 1" = 20'

OWNER & DEVELOPER
VALLEY CREST INC.
1082 GREENBRIER WAY, ELICOTT CITY, MD.

VALLEY CREST APARTMENTS
80' ELEC. DIST. # HOWARD CO., MD.
AUGUST 2, 1968
SCALE: AS SHOWN

PROFILE
SURVEYED, PLOTTED, GRADES CHECKED, STRUCTURE NOTATION CHKD.
NOTE BOOK NO. _____
BY _____ DATE _____



RECEIVED
AUG 7 1968
HOWARD COUNTY
PLANNING COMMISSION

APPROVED: HOWARD CO. PLANNING COM.

SEAL: _____ DATE: _____
APPROVED: HOWARD CO. ROADS DEPT.
SEAL: _____ DATE: _____
APPROVED: HOWARD CO. METRS. COMM.
SEAL: _____ DATE: _____

F-68-54