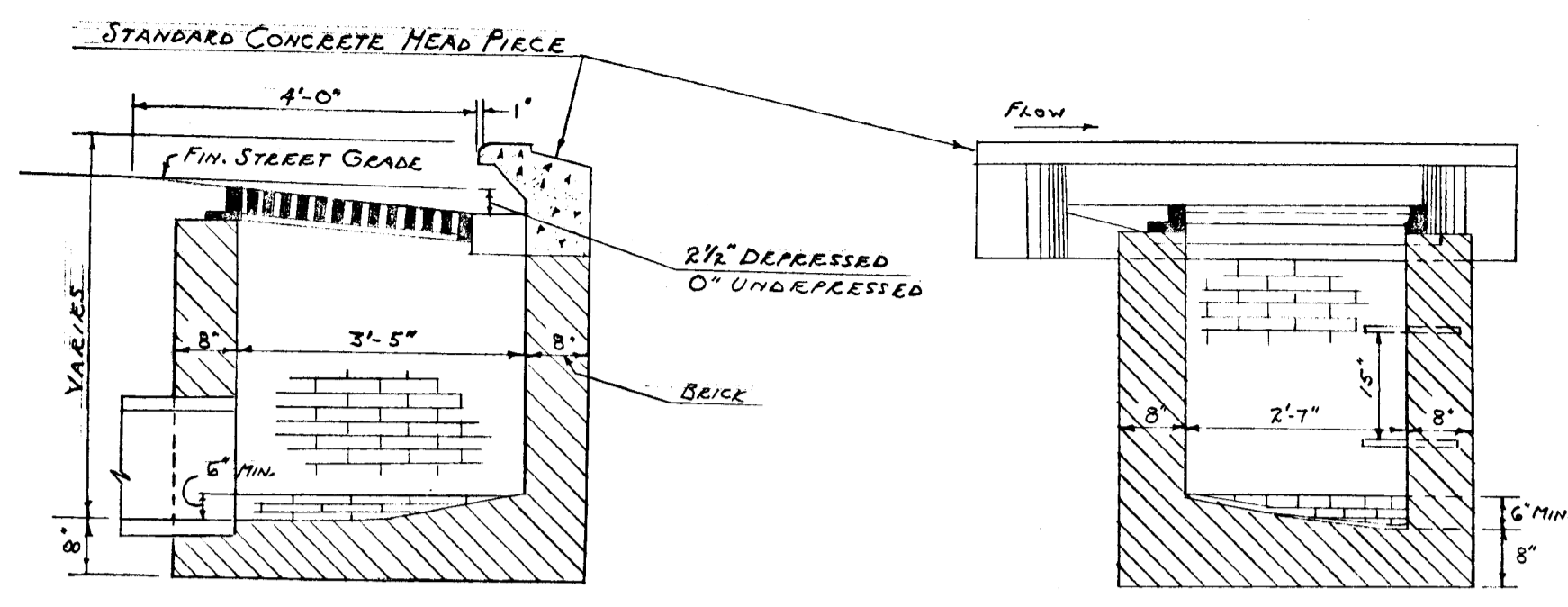


NOTE: FOR SPEEDS ON SEEDING SEE ARTICLE C-36 OF THE HOWARD CO. ROAD CODE.

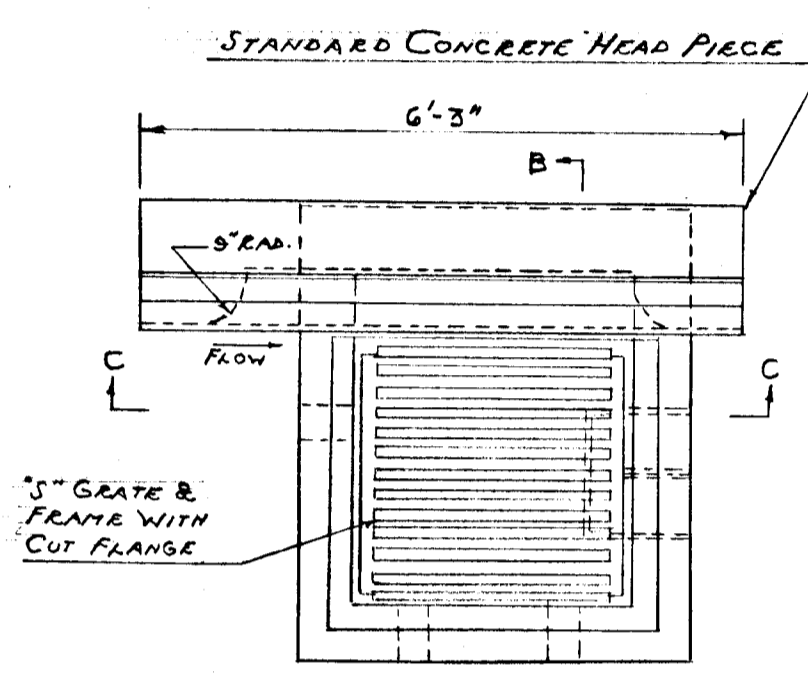
SECTION 5



SECTION 'B-B'

SECTION 'C-C'

DETAILS TYPE 'S' COMBINATION INLET



PLAN B-B

GENERAL NOTES

1. ALL INLETS TO BE TYPE 'S' COMB.
2. ALL PIPING TO BE REINFORCED CONCRETE CULVERT PIPE-A.S.T.M. CLASS IV.

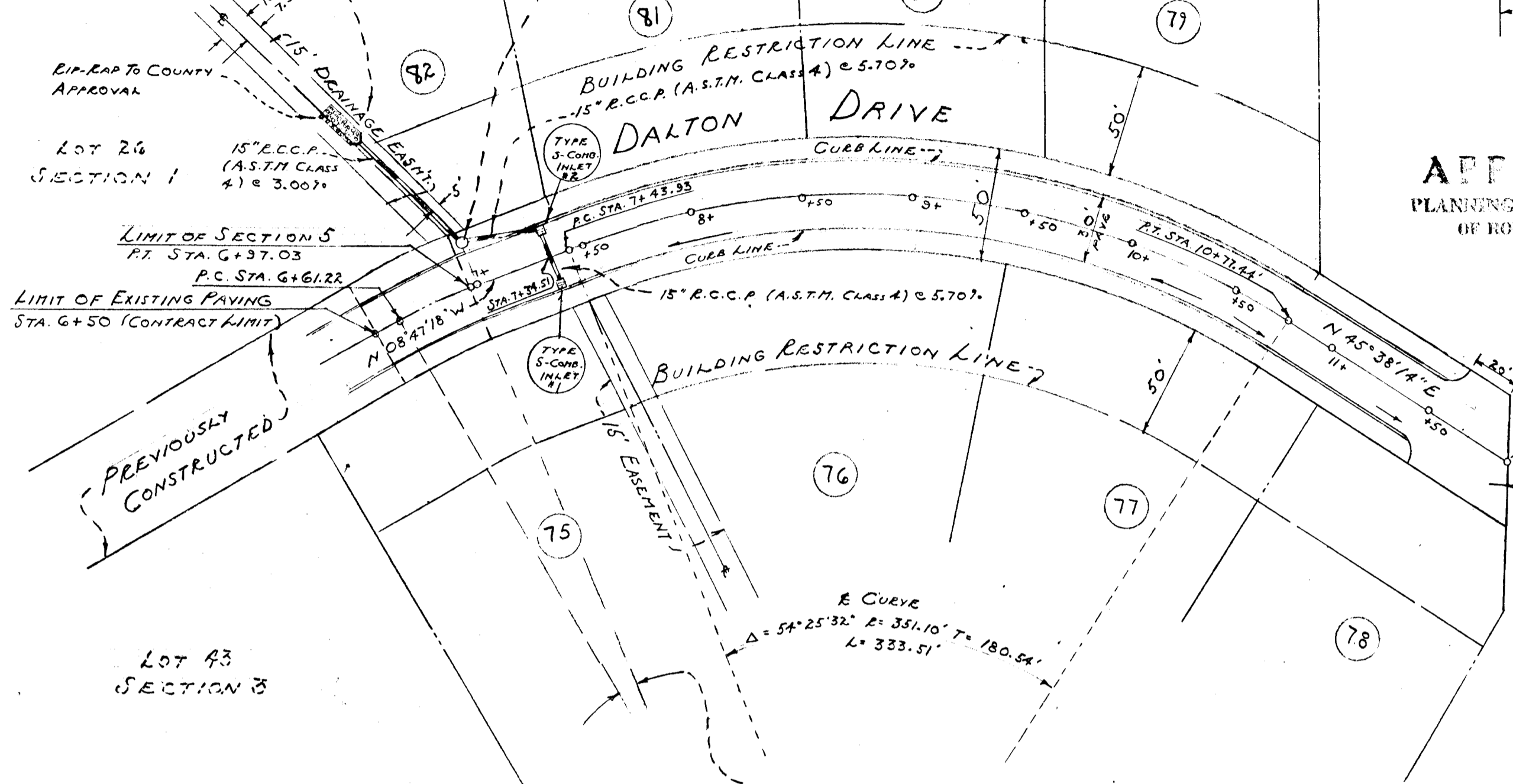
HOWARD COUNTY STD. TYPE 'F' CONC. ENDWALL (WINGS MODIFIED TO 45°) SEE PAGE III, DWG. D-56 OF THE HOWARD COUNTY ROAD CODE

LOT 26 SECTION 1  
15" R.C.C.P. (A.S.T.M. CLASS IV) @ 3.00'

LIMIT OF SECTION 5  
P.C. STA. 6+37.03

LIMIT OF EXISTING PAVING  
STA. 6+50 (CONTRACT LIMIT)

LOT 43 SECTION 3

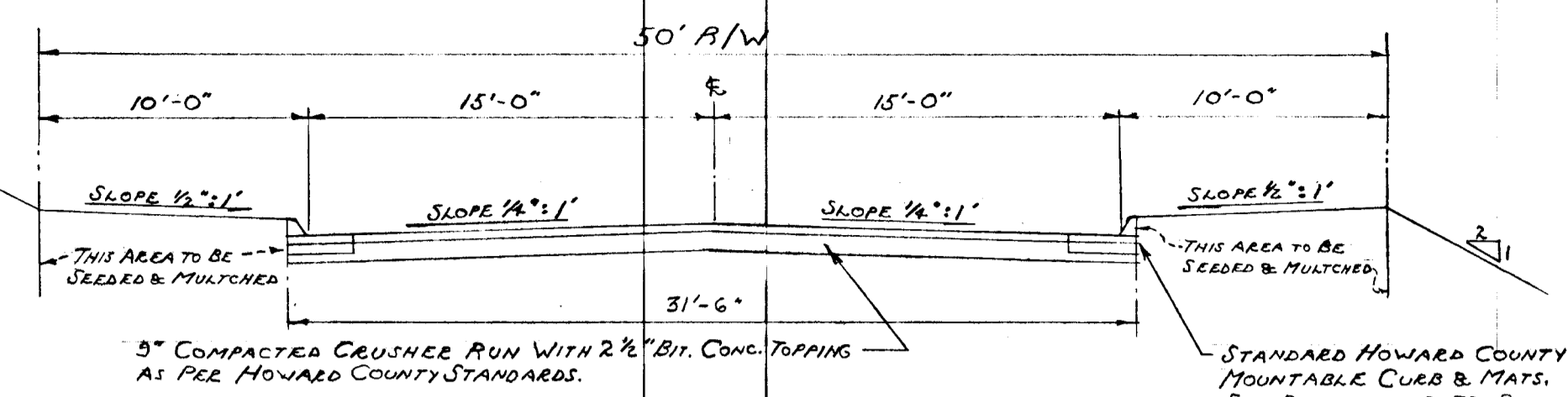


E CURVE  
Δ 08°43'52"  
R 235.00'  
T 17.34'  
L 35.81'

John T. Latham  
JOHN T. LATHAM (REGISTERED SURVEYOR - 76 42689)

APPROVED  
PLANNING COMMISSION  
OF HOWARD COUNTY

TYPICAL ROADWAY SECTION  
NOT TO SCALE  
(DETAIL D-15, PAGE 70 OF THE ROAD CONSTRUCTION CODE AND STANDARD SPECIFICATIONS OF HOWARD COUNTY & DETAIL D-16, PAGE 71 OF SAID CODE.)

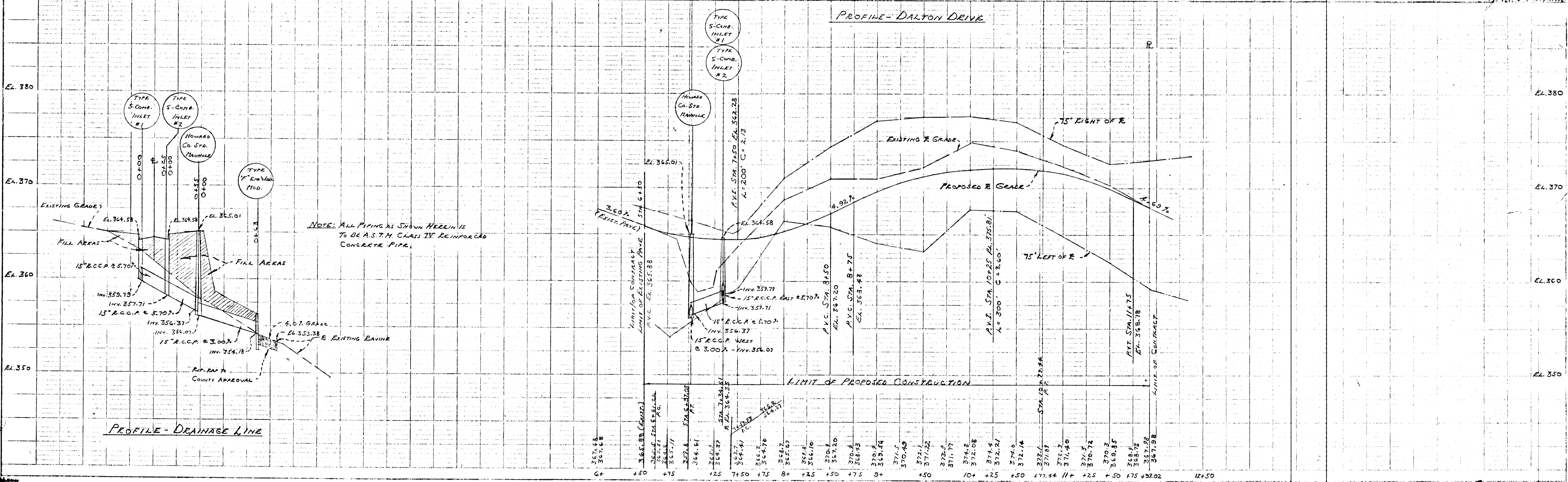


- 4-25-68 J. H. Clawson Jr. (PLANNING COMMISSION)
- 4-16-68 Herman S. O'Neill (COUNTY ROADS)
- 4-23-68 Wm. O. Filbert (METROPOLITAN COMMISSION)

DESIGNED BY	HOLMES HAWKINS & CHARLES MADDOX, OWNERS	1 OF 1
APPROVED BY	ELLIOTT CITY, MARYLAND	
DRAWN BY	ROAD IMPROVEMENTS & STORM DRAINAGE	
TITLE	"DALTON" SECTION 5	
DATE	10-6-65	
SCALE	1" = 10'	
JOB NUMBER	2535	

REGISTERED PROFESSIONAL ENGINEERS AND LAND SURVEYORS  
MARCUS, MARYLAND

PROFILE - DALTON DRIVE



PROFILE - DRAINAGE LINE

NOTE: ALL PIPING AS SHOWN HEREIN IS TO BE A.S.T.M. CLASS IV REINFORCED CONCRETE PIPE.

SCALE  
NOTE: BOOKS, COPIES, ETC.  
NO. 1000