

COLUMBIA

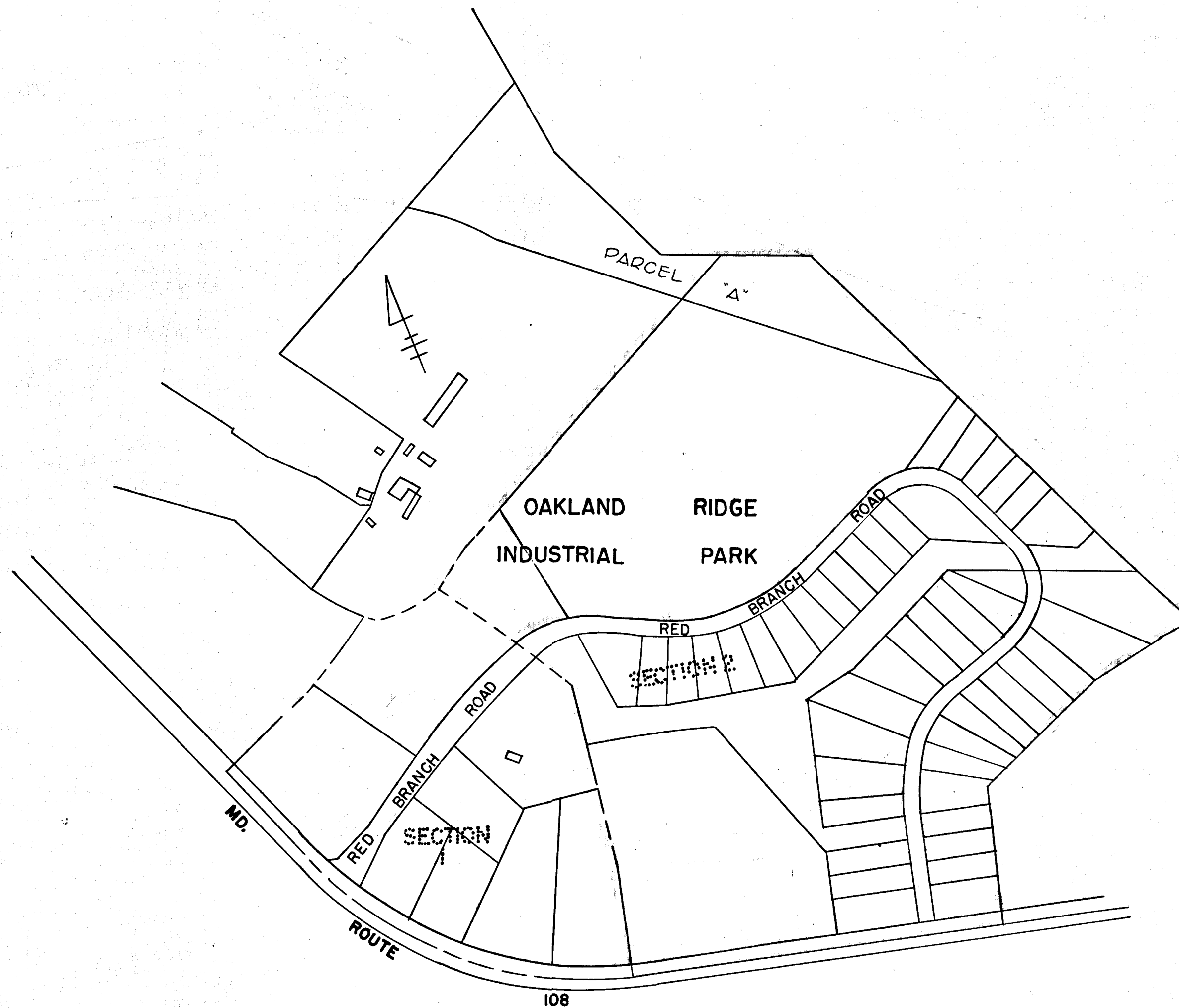
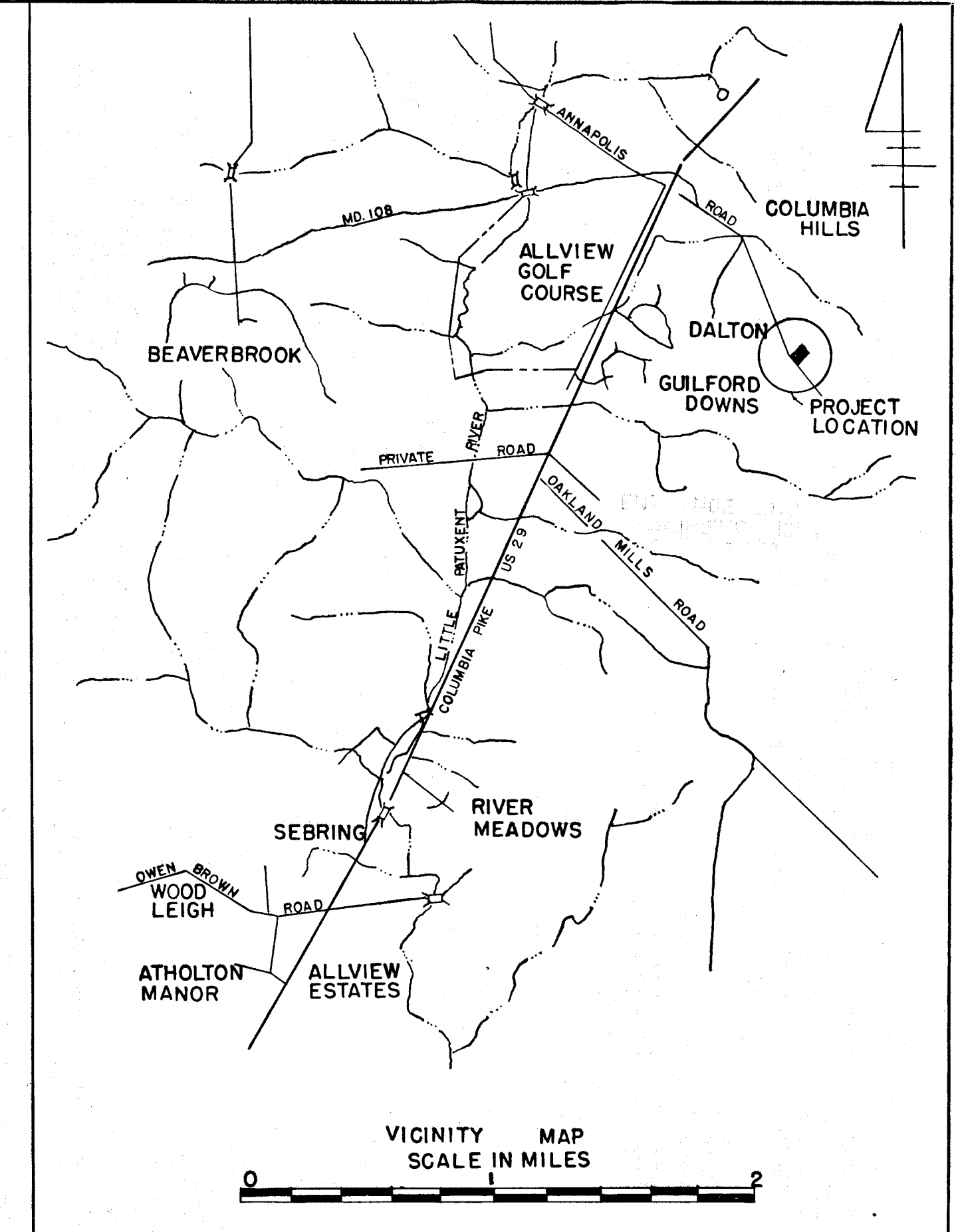
ELECTION DISTRICT 2

OAKLAND RIDGE INDUSTRIAL PARK

SECTION 2

HOWARD RESEARCH & DEVELOPMENT CORP.

HOWARD COUNTY, MARYLAND

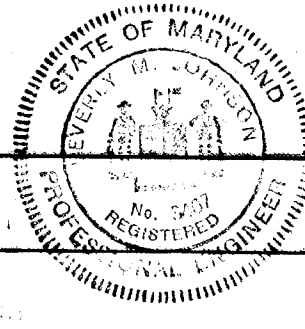


SITE PLAN
SCALE 1" = 400'

APPROVED
PLANNING COMMISSION
OF HOWARD COUNTY

Approved: Howard County Planning Commission <i>J. A. [Signature]</i> Senior Engineer	<u>5-2-68</u> Date
Approved: Howard County Roads Department <i>Franklin N. Heiland</i> Roads Superintendent	<u>5-1-68</u> Date
Approved: Howard County Metropolitan Commission <i>Ed O. [Signature]</i> Chief Engineer	<u>5-2-68</u> Date

PURDUM & JESCHKE ENGINEERS & LAND SURVEYORS
1023 NORTH CALVERT ST. BALTIMORE, MARYLAND



Bearly W. Johnson
Reg. No. 3407

#64

PLAN & PROFILE OF RED BRANCH ROAD
SECTION 2
OAKLAND RIDGE INDUSTRIAL PARK
COLUMBIA

SECOND ELECTION DISTRICT HOWARD COUNTY, MD
SCALE: AS SHOWN

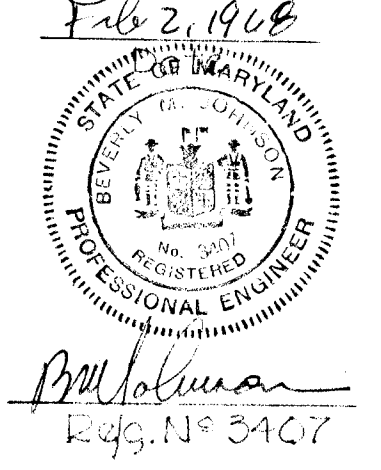
SHEET 2 OF 10

THE HOWARD RESEARCH AND DEVELOPMENT CORP.
THE VILLAGE OF CROSS KEYS
BALTIMORE, MARYLAND 21202

PURDUM & JESCHKE
ENGINEERS & LAND SURVEYORS
1023 NORTH CALVERT ST.
BALTIMORE, MARYLAND

APPROVED
PLANNING COMMISSION
OF HOWARD COUNTY

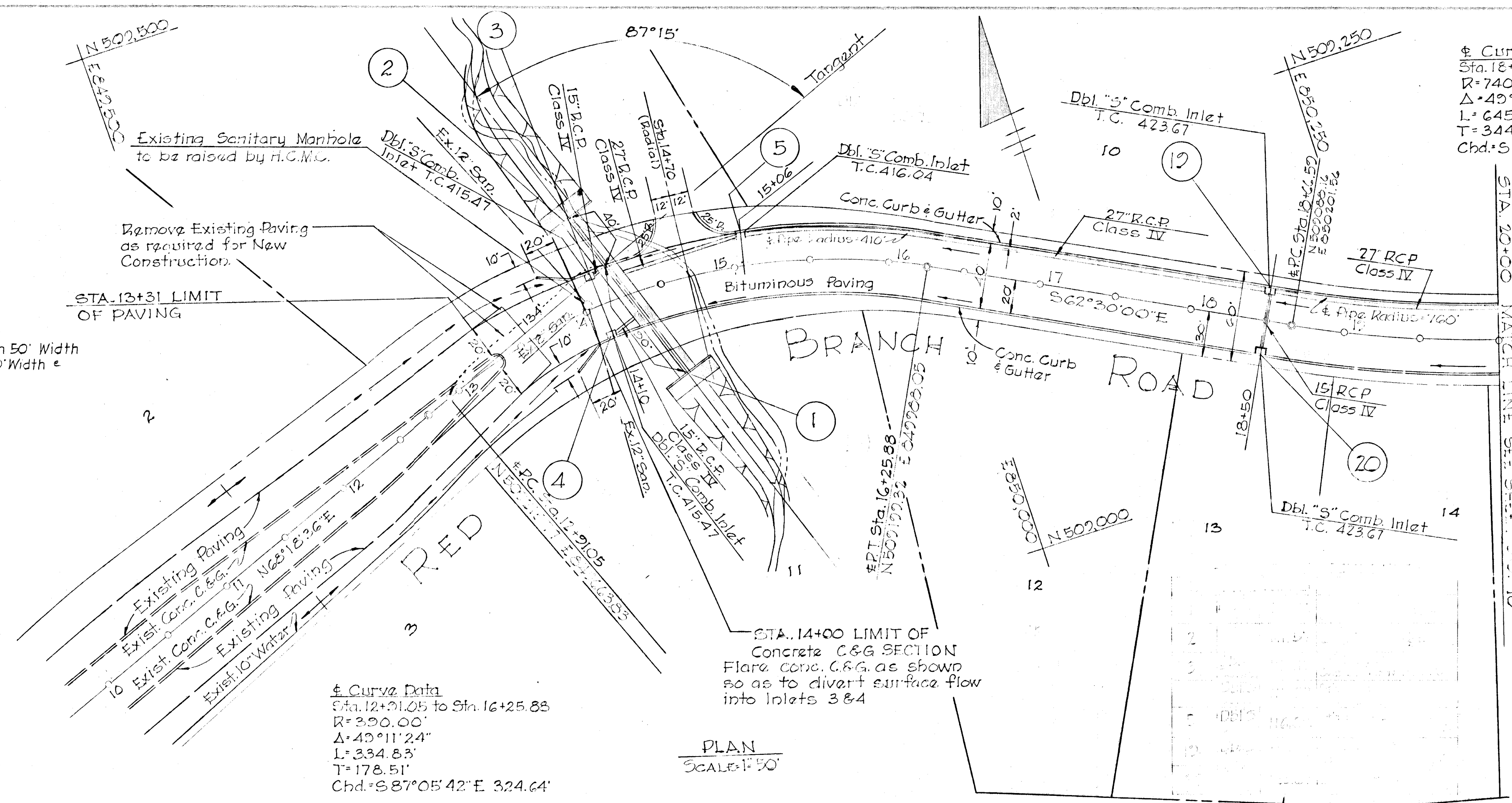
DATE: 5-2-68
DATE: 5-2-68
DATE: 5-2-68



NOTE: Warp Paving From 50' Width
e Sta. 13+31 to 40' Width e
Sta. 16+25.88

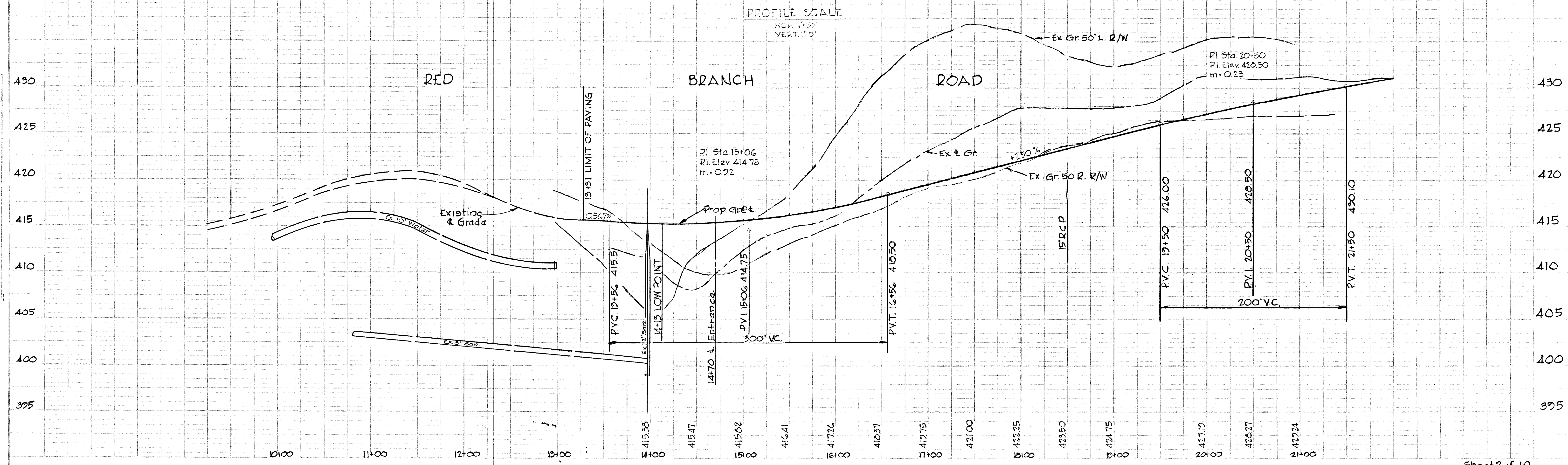
- STRUCTURE SCHEDULE -

NO.	TYPE	LOPELEV.	REMARKS
1	Endwall	412.43	See detail sh. 7
2	Endwall	411.57	See detail sh. 7
3	Dbl. 5' Comb.	415.47	See Struct. Notes sh. 7
4	Dbl. 5' Comb.	415.47	See Struct. Notes sh. 7
5	Dbl. 5' Comb.	416.04	See Struct. Notes sh. 7
19	Dbl. 5' Comb.	423.67	See Struct. Notes sh. 7
20	Dbl. 5' Comb.	423.67	See Struct. Notes sh. 7

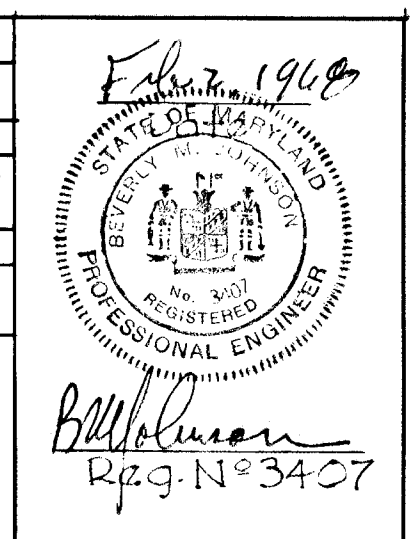


Curve Data
Sta. 12+21.05 to Sta. 16+25.88
R=320.00'
Δ=43°11'24"
L=334.83'
T=178.51'
Chd.=8.87°05'42" E 324.64'

PROFILE SCALE
HOR. 1"=50'
VERT. 1"=5'



Approved: Howard County Planning Comm.
 5-2-68
 5-1-68
 5-1-68



PLAN & PROFILE OF RED BRANCH ROAD
 SECTION 2
 OAKLAND RIDGE INDUSTRIAL PARK
 COLUMBIA
 SECOND ELECTION DISTRICT
 HOWARD COUNTY MD.
 SCALE: AS SHOWN

SHEET 3 OF 10
 THE HOWARD RESEARCH AND DEVELOPMENT CORP.
 THE VILLAGE OF CROSS KEYS
 BALTIMORE, MARYLAND 21202
 FULDM & JESCHKE
 ENGINEERS & LAND SURVEYORS
 1023 NORTH CALVERT ST.
 BALTIMORE, MARYLAND

± CURVE DATA
 Sta. 16+44.50 to Sta. 25+72.14
 R=740.00'
 Δ=42°58'58"
 L=645.55'
 T=344.93'
 Chd.=S67°20'22"E 625.27'

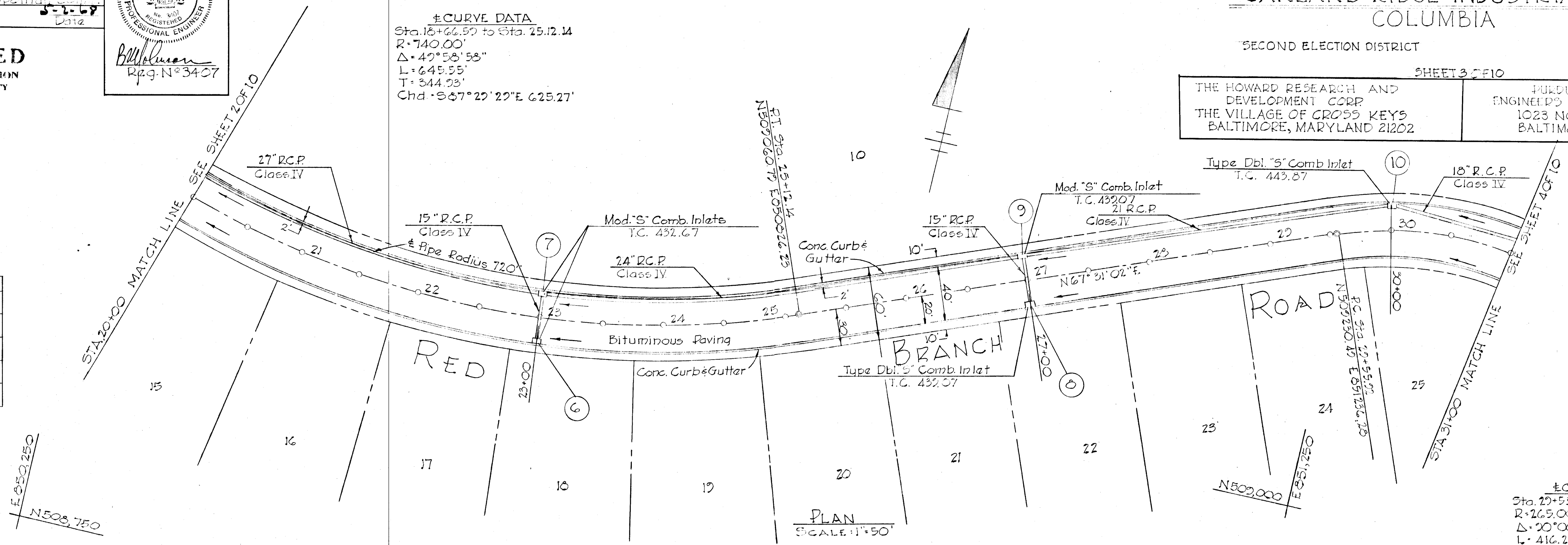
1:50,000
 N502,000

APPROVED
 PLANNING COMMISSION
 OF HOWARD COUNTY

PLAN
 SCALE: 1"=50'

STRUCTURE SCHEDULE

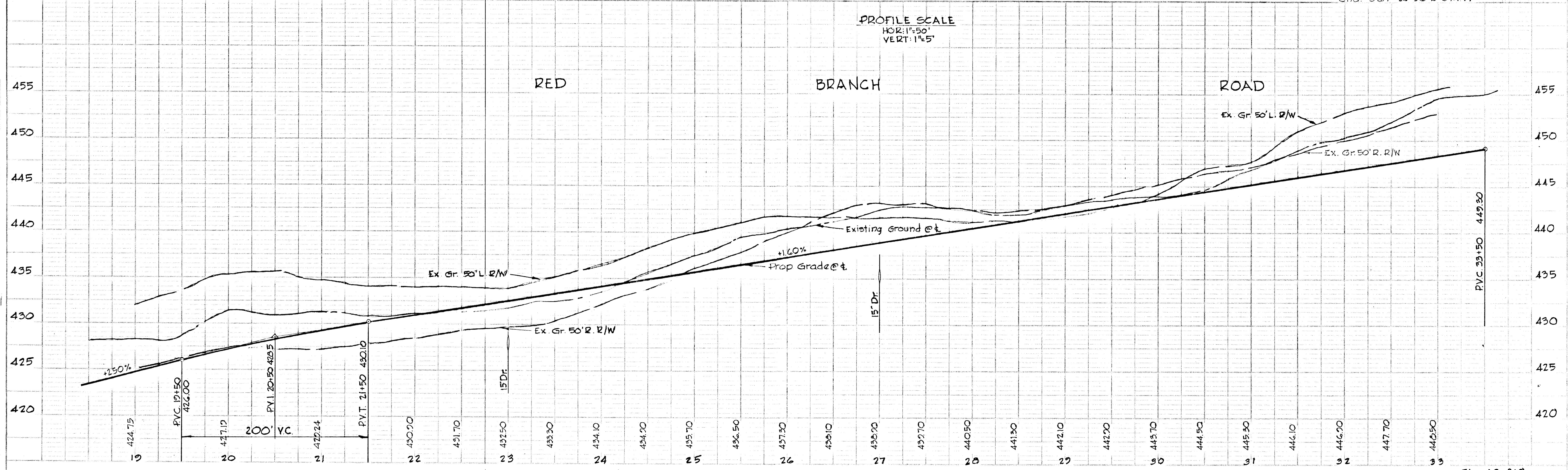
No.	Structure	Elevation	Notes
6	Mod. 'S' Comb.	432.67	See Detail Sh. 8
7	Mod. 'S' Comb.	432.67	See Detail Sh. 8
8	18" R.C.P.	432.07	Std. Drwg. D-55 See Struct. Notes Sh. 7
9	Mod. 'S' Comb.	432.07	See Detail Sh. 8
10	24" R.C.P.	443.87	Std. Drwg. D-55 See Struct. Notes Sh. 7



± CURVE DATA
 Sta. 27+55.92 to Sta. 33+72.16
 R=265.00'
 Δ=20°00'00"
 L=416.26'
 T=265.00'
 Chd.=S67°20'55"E 374.77'

PLAN
 SCALE: 1"=50'

PROFILE SCALE
 HOR: 1"=50'
 VERT: 1"=5'



PROFILE
 SCALE: 1"=50'

#64

Sheet 3 of 10

PLAN & PROFILE OF RED BRANCH ROAD
SECTION 2
OAKLAND RIDGE INDUSTRIAL PARK
COLUMBIA

SECOND ELECTION DISTRICT HOWARD COUNTY, MD.
SCALE: AS SHOWN

SHEET 4 OF 10

THE HOWARD RESEARCH AND DEVELOPMENT CORP.
THE VILLAGE OF CROSS KEYS
BALTIMORE, MARYLAND 21202

PURDUM & JESCHKE
ENGINEERS & LAND SURVEYORS
1023 NORTH CALVERT ST.
BALTIMORE, MARYLAND

Approved by Howard County Planning Comm.
Date: 3-2-68

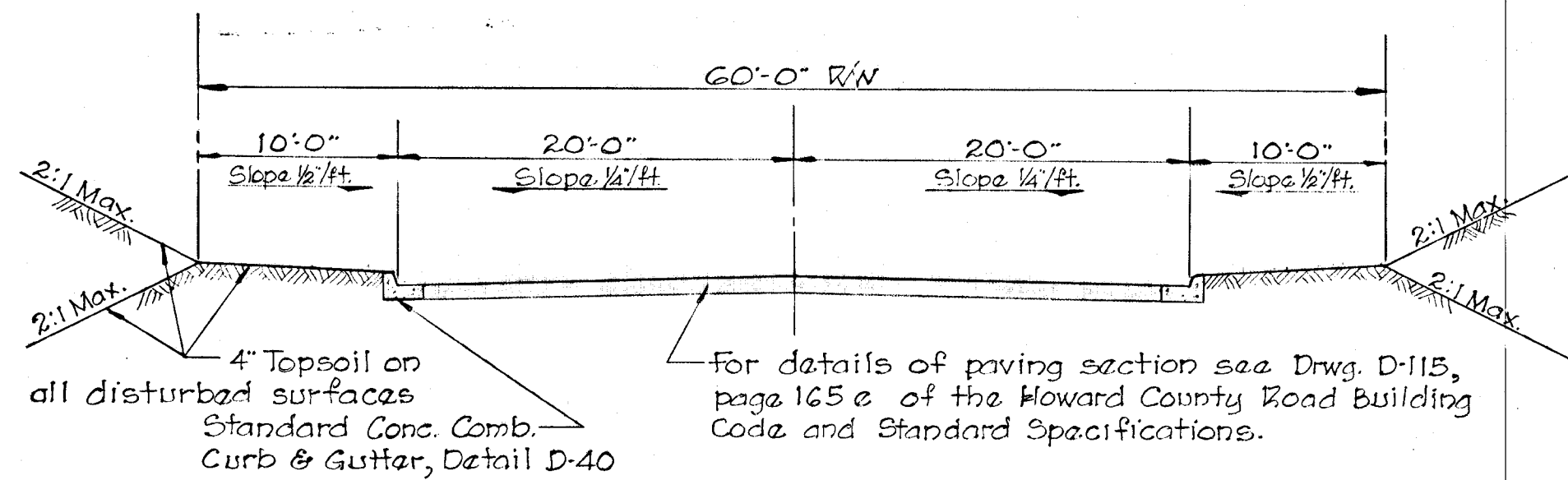
Approved by Howard County Road Dept.
Date: 3-1-68

Approved by Howard County Metropolitan Comm.
Date: 5-2-68

Feb 2, 1968

Professional Engineer
Reg. No. 3407

APPROVED
PLANNING COMMISSION
OF HOWARD COUNTY



TYPICAL SECTION
Scale: 1/8"=1'-0"

± CURVE DATA
Sta. 20+83.72 to Sta. 33+72.16
R=265.00'
Δ=20°00'00"
L=416.22'
T=265.00'
Chd.=567°28'58"E 374.77'

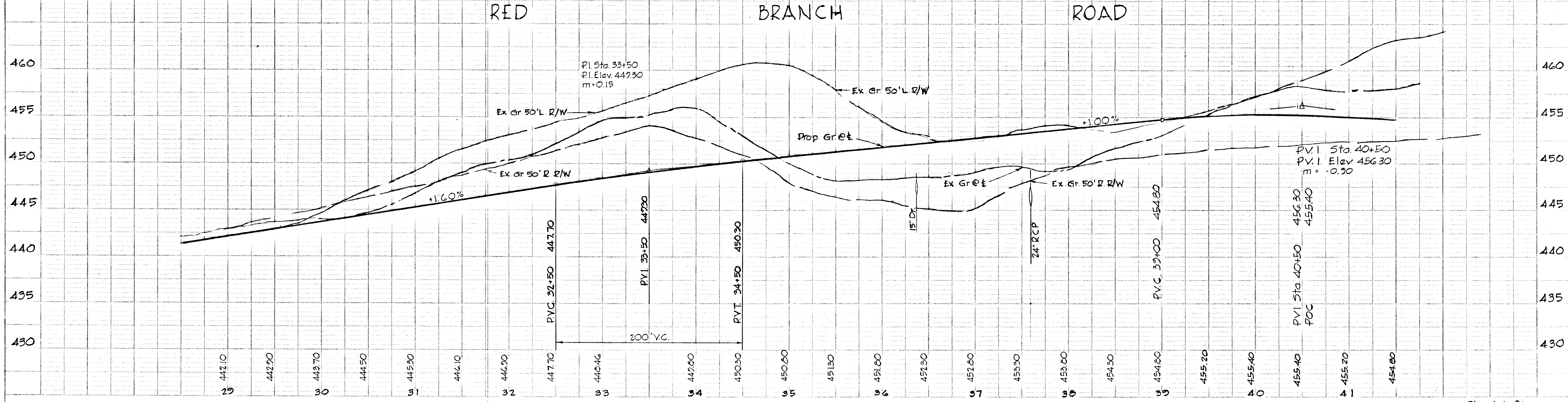
± CURVE DATA
Sta. 36+72.46 to Sta. 40+45.35
R=265.00'
Δ=60°37'25"
L=372.89'
T=224.83'
Chd.=517°49'44"W 342.88'

PLAN
SCALE: 1"=50'

- STRUCTURE SCHEDULE -

NO.	TYPE	FOOT/ELEV.	REMARKS
11	Mod. S Comb.	446.24	See Detail Sh. 8
12	Dbl. S Comb.	448.63	See Drwg. D-22 See Struct. Notes Sh. 7
13	Dbl. S Comb.	452.22	See Drwg. D-22 See Struct. Notes Sh. 7
14	Mod. S Comb.	452.27	See Detail Sh. 8
15	"C" Endwall	446.70	See Howard Co. Std. Endwall Drwg. D-52
16	"C" Endwall	447.25	See Howard Co. Std. Endwall Drwg. D-52
17	"C" Endwall	449.79	See Howard Co. Std. Endwall Drwg. D-52
18	Dbl. S Comb.	453.67	See Drwg. D-22 See Struct. Notes Sh. 7

PROFILE SCALE
HOR. 1"=50'
VERT. 1"=5'



Howard County Planning Comm.
 3-2-68
 3-2-68
 5-1-68
 5-2-68
 5-6-68

APPROVED
 PLANNING COMMISSION
 OF HOWARD COUNTY

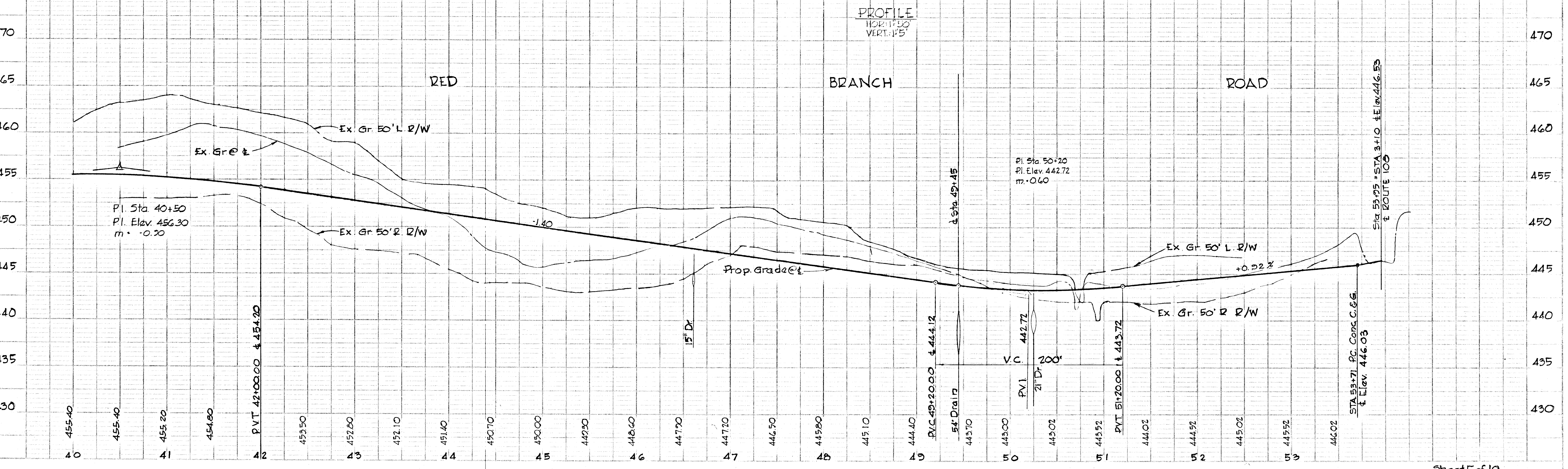
STRUCTURE SCHEDULE

No.	TYPE	LOCATION	REMARKS
21	Dbl. 'S' Comb.	451.43	See Struct. Notes Sh. 7
22	Dbl. 'S' Comb.	447.93	See Struct. Notes Sh. 7
23	Dbl. 'S' Comb.	447.93	See Struct. Notes Sh. 7
24	Dbl. 'S' Comb.	444.23	See Struct. Notes Sh. 7
25	Dbl. 'S' Comb.	443.07	See Struct. Notes Sh. 7
26	Dbl. 'S' Comb.	443.07	See Struct. Notes Sh. 7
27	Dbl. 'S' Comb.	443.82	See Struct. Notes Sh. 7
28	Dbl. 'S' Comb.	444.74	See Struct. Notes Sh. 7
29	Endwall	442.52	See Howard Co. Std. Endwall Dwg. D-52
30	Endwall	441.60	See Howard Co. Std. Endwall Dwg. D-52

PLAN & PROFILE OF RED BRANCH ROAD
 SECTION 2
OAKLAND RIDGE INDUSTRIAL PARK
COLUMBIA
 SECOND ELECTION DISTRICT
 HOWARD COUNTY, MD.
 SCALE: AS SHOWN
 SHEET 5 OF 10

THE HOWARD RESEARCH AND DEVELOPMENT CORP.
 THE VILLAGE OF CROSS KEYS
 BALTIMORE, MARYLAND 21202

PURDUM & JESCHKE
 ENGINEERS & LAND SURVEYORS
 1023 NORTH CALVERT
 BALTIMORE, MARYLAND



STORM DRAIN - DETAIL SHEET
SECTION 2

OAKLAND RIDGE INDUSTRIAL PARK
COLUMBIA

SECOND ELECTION DISTRICT

HOWARD COUNTY, MD.
SCALE: AS SHOWN

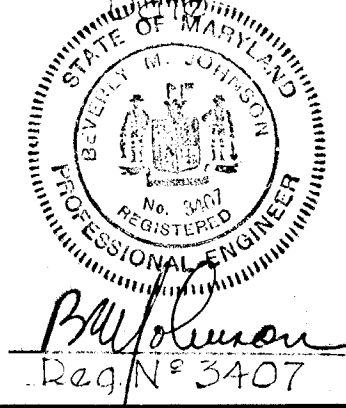
SHEET 7 OF 10

THE HOWARD RESEARCH AND
DEVELOPMENT CORP.
THE VILLAGE OF CROSS KEYS
BALTIMORE, MARYLAND 21202

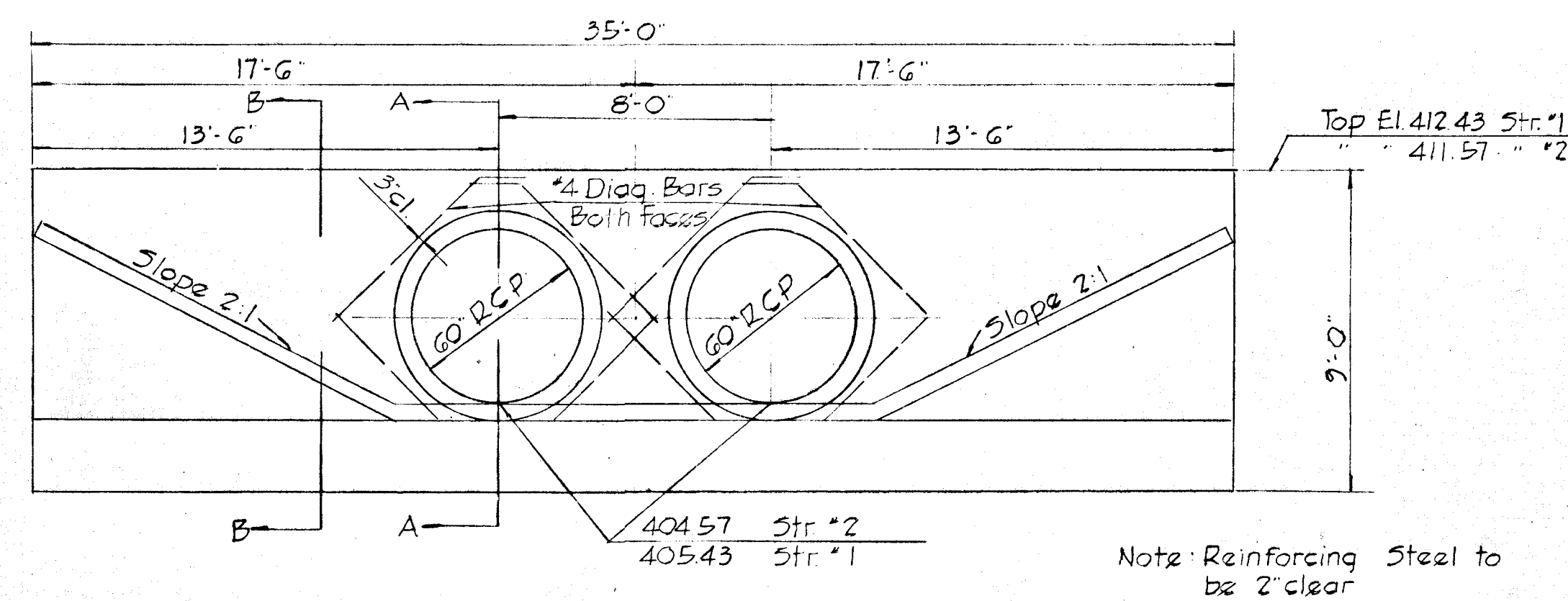
PURDUM & JR. SCHKE
ENGINEERS & LAND SURVEYORS
1023 NORTH CALVERT ST.
BALTIMORE, MARYLAND

Approved: Howard County Planning Comm.
Senior Engineer: *J.H. Clavson* 5-2-68
Approved: Howard County Road Dept.
Roads Superintendent: *Shawelle M. Meland* 5-1-68
Approved: Howard County Metropolitan Comm.
Chief Engineer: *W.O. Fallant* 1-2-68

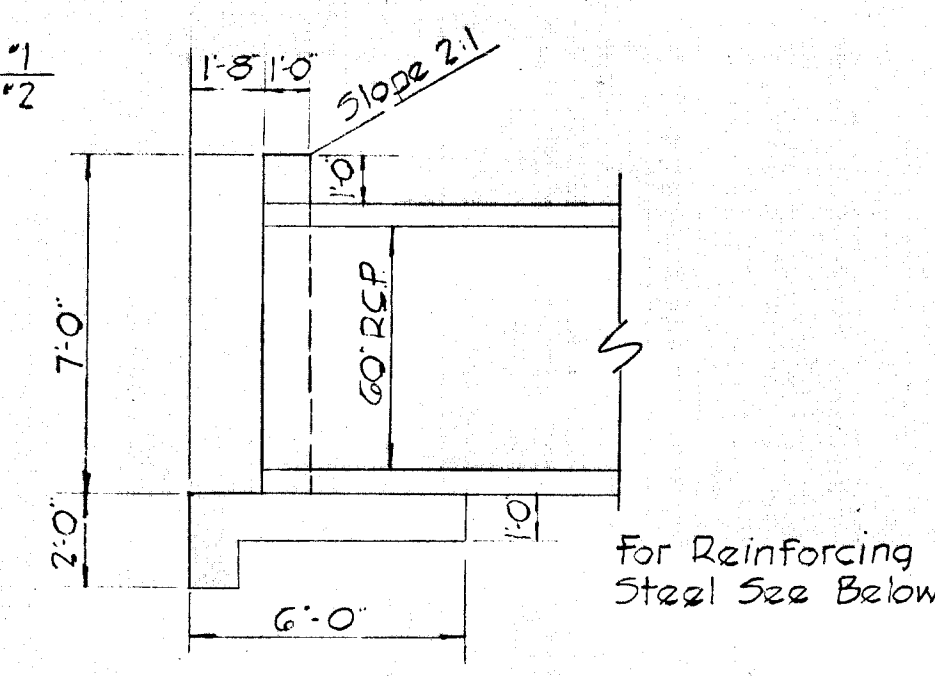
Feb 2, 1968



APPROVED
PLANNING COMMISSION
OF HOWARD COUNTY



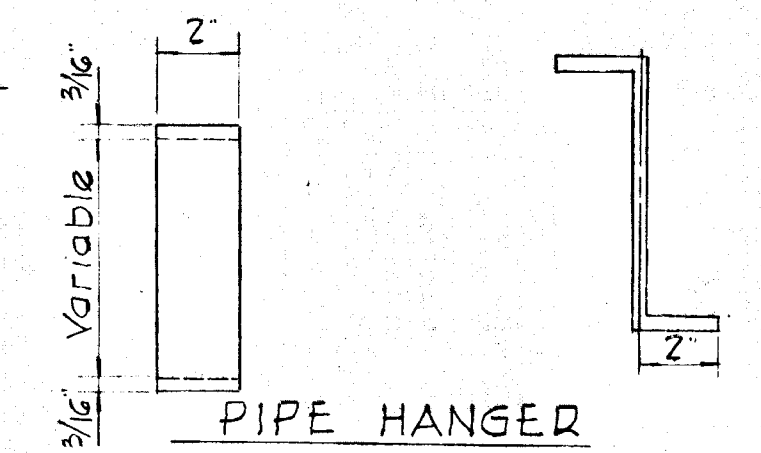
ELEVATION
Scale: 1/4"=1'-0"



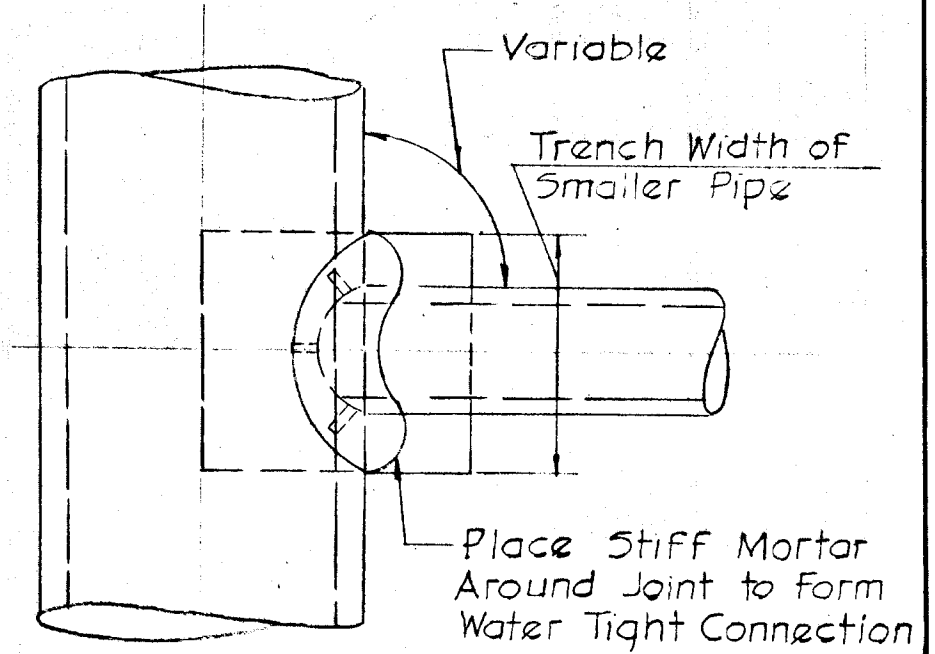
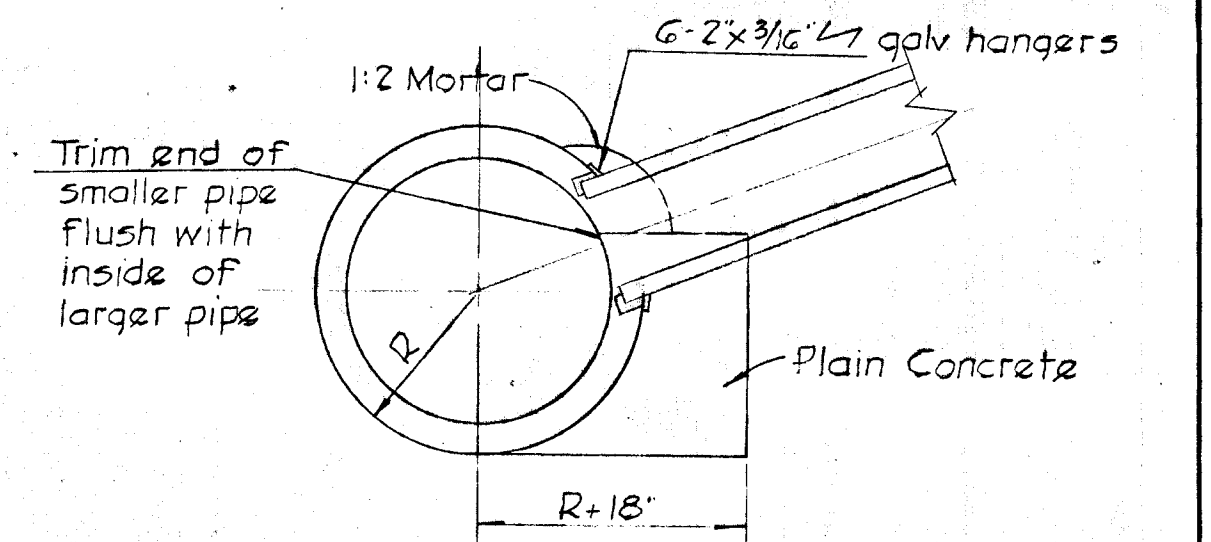
SECTION A-A
Scale: 1/4"=1'-0"

- STRUCTURAL NOTES
- All Concrete to be 3000 psi. = 28 Days Unless Otherwise Noted.
 - Chamfer All Exposed Edges of Concrete.
 - Provide Brick Invert and Bench for all Inlets as per Standard MH D-103
 - All Type 5 Comb Inlets to be Constructed with Brick Masonry.
 - Provide Inlet Grates for all Type 5 Comb Inlets as per Standard Details D100-101.

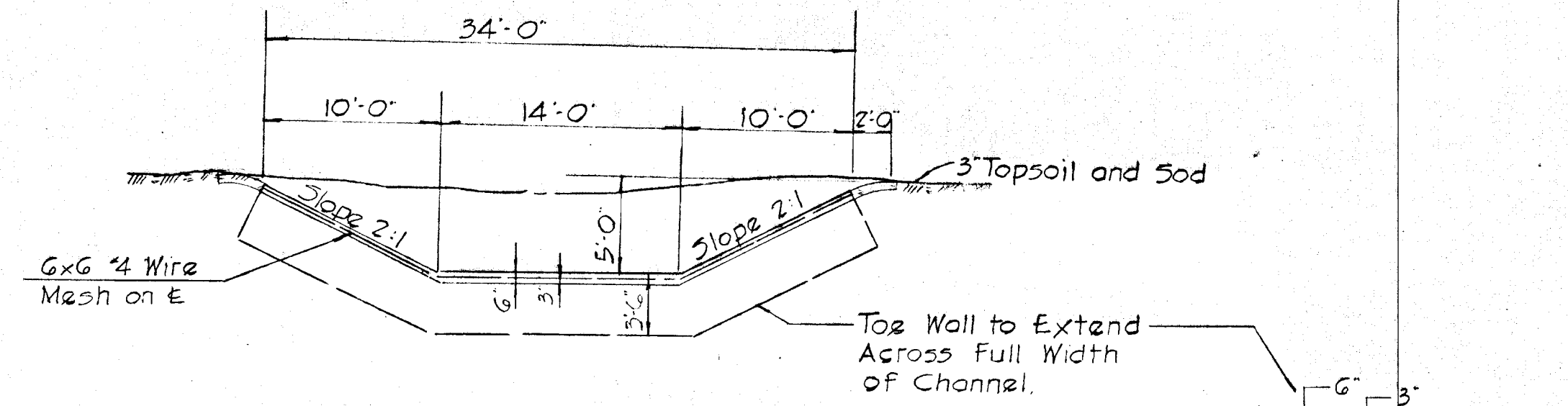
For Reinforcing Steel See Below



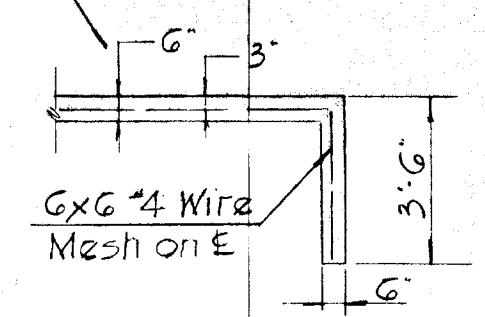
PIPE HANGER



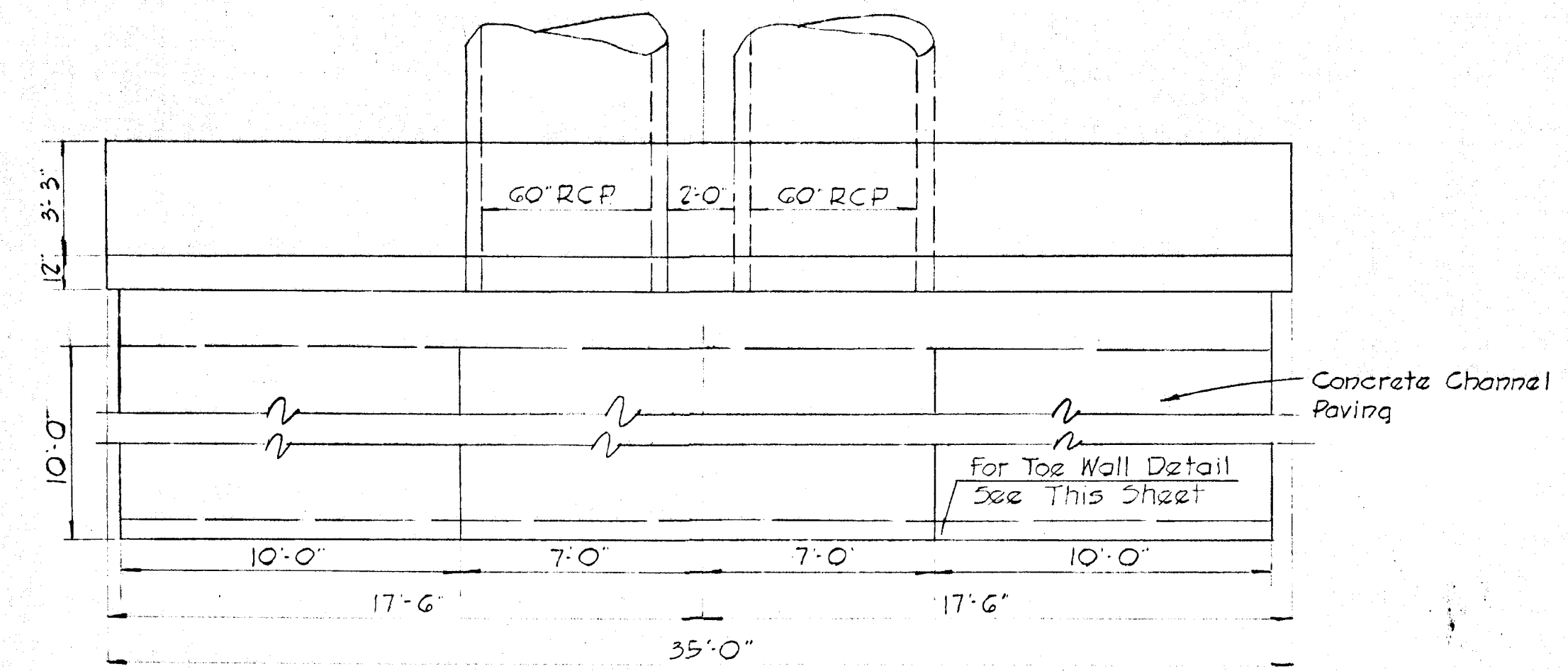
STANDARD FIELD CONNECTION
No Scale



CONCRETE CHANNEL
Scale: 1/8"=1'-0"

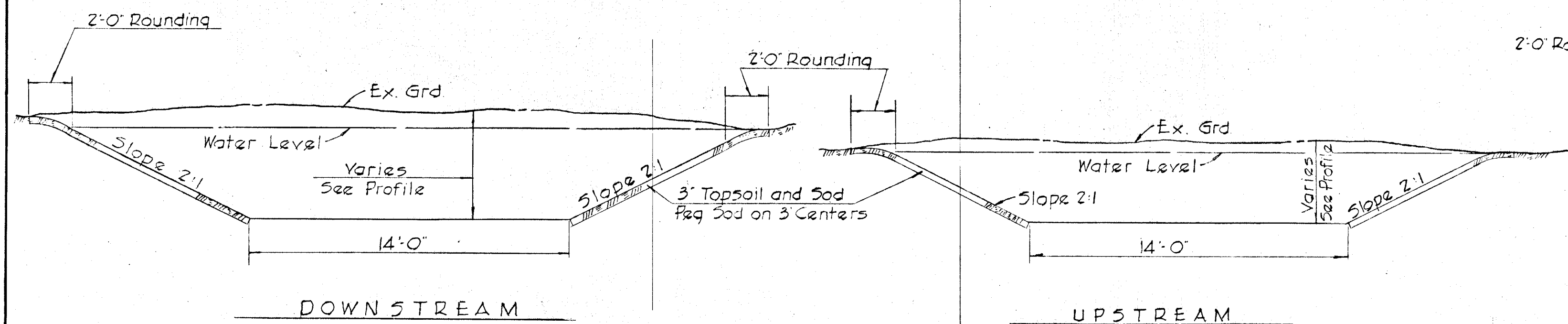


TOE WALL DETAIL
Scale: 1/4"=1'-0"

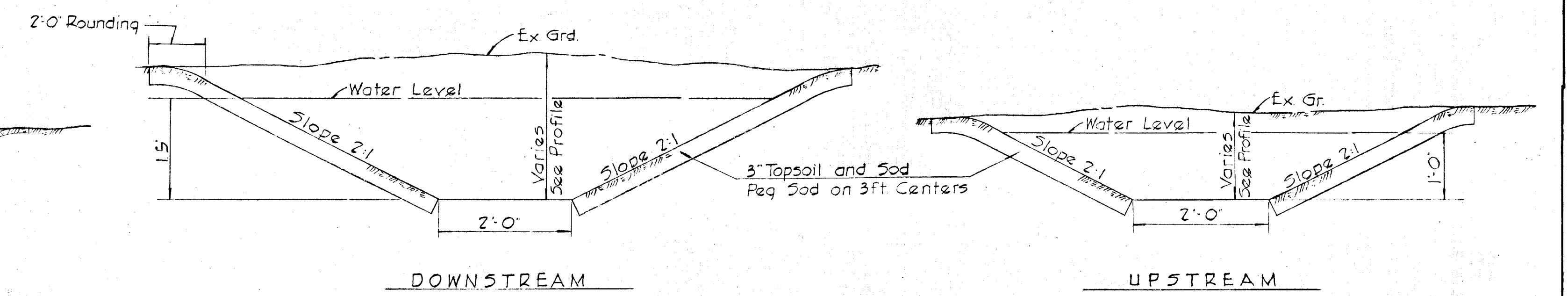


PLAN
Scale: 1/4"=1'-0"

STRUCTURES NUMBER 1&2



EARTH CHANNEL SECTION STA. 14+30
Scale: 1/4"=1'-0"



EARTH CHANNEL SECTION STA. 37+58
Scale: 3/4"=1'-0"

STORM DRAIN DETAIL SHEET
SECTION 2

OAKLAND RIDGE INDUSTRIAL PARK
COLUMBIA

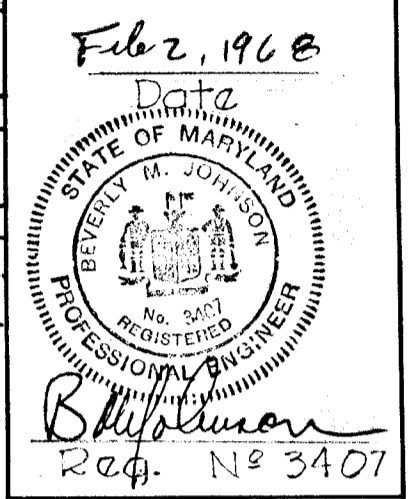
SECOND ELECTION DISTRICT HOWARD COUNTY MD
SCALE AS SHOWN

SHEET 8 OF 10

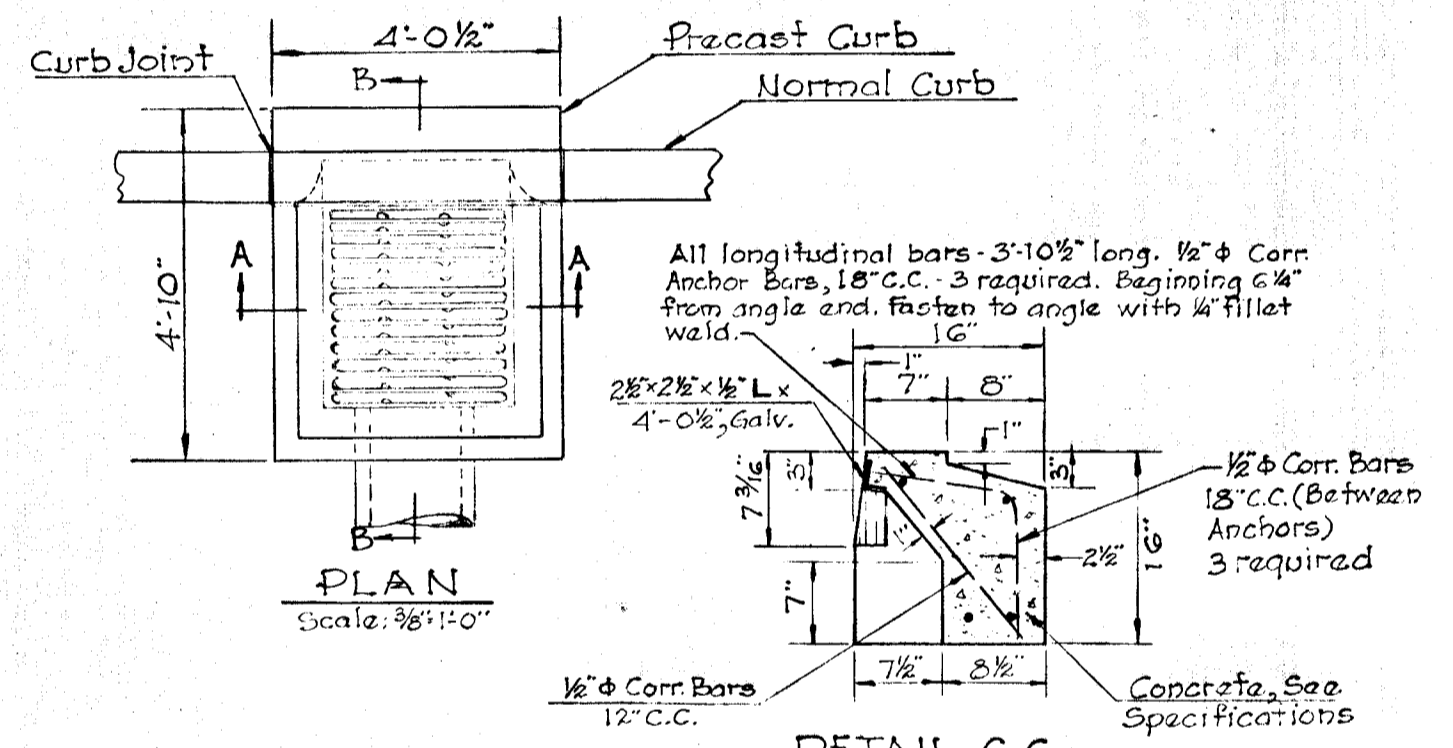
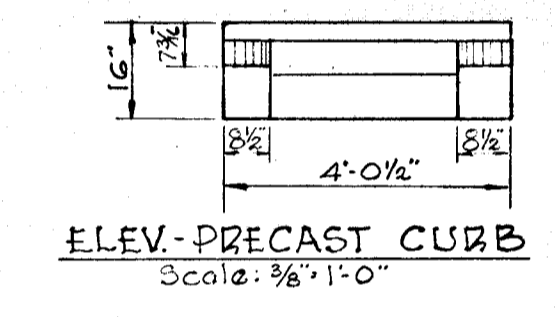
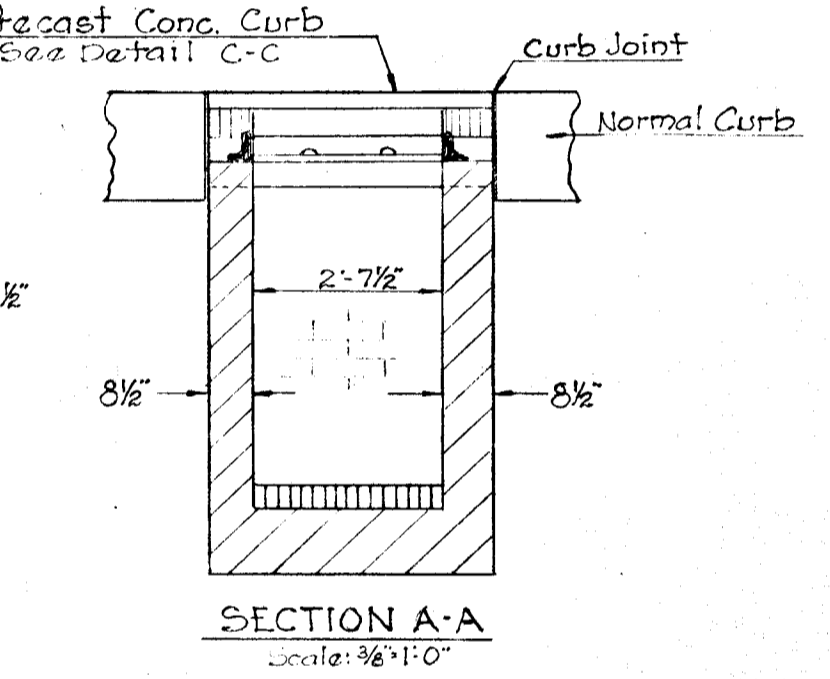
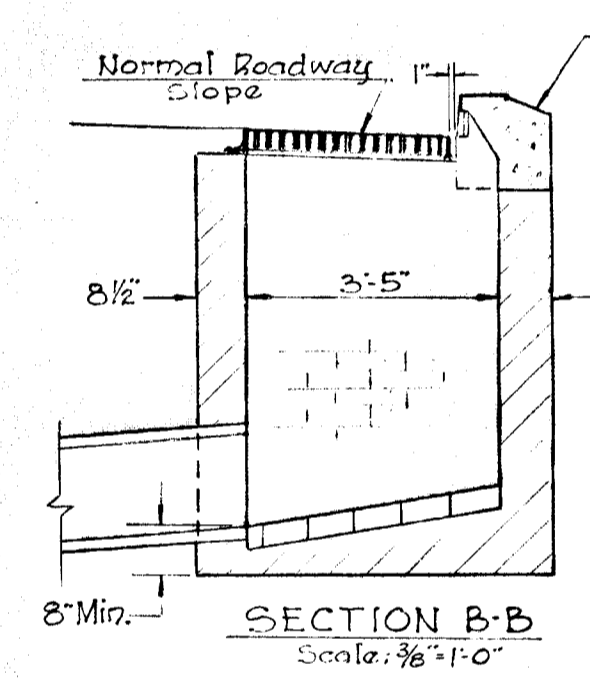
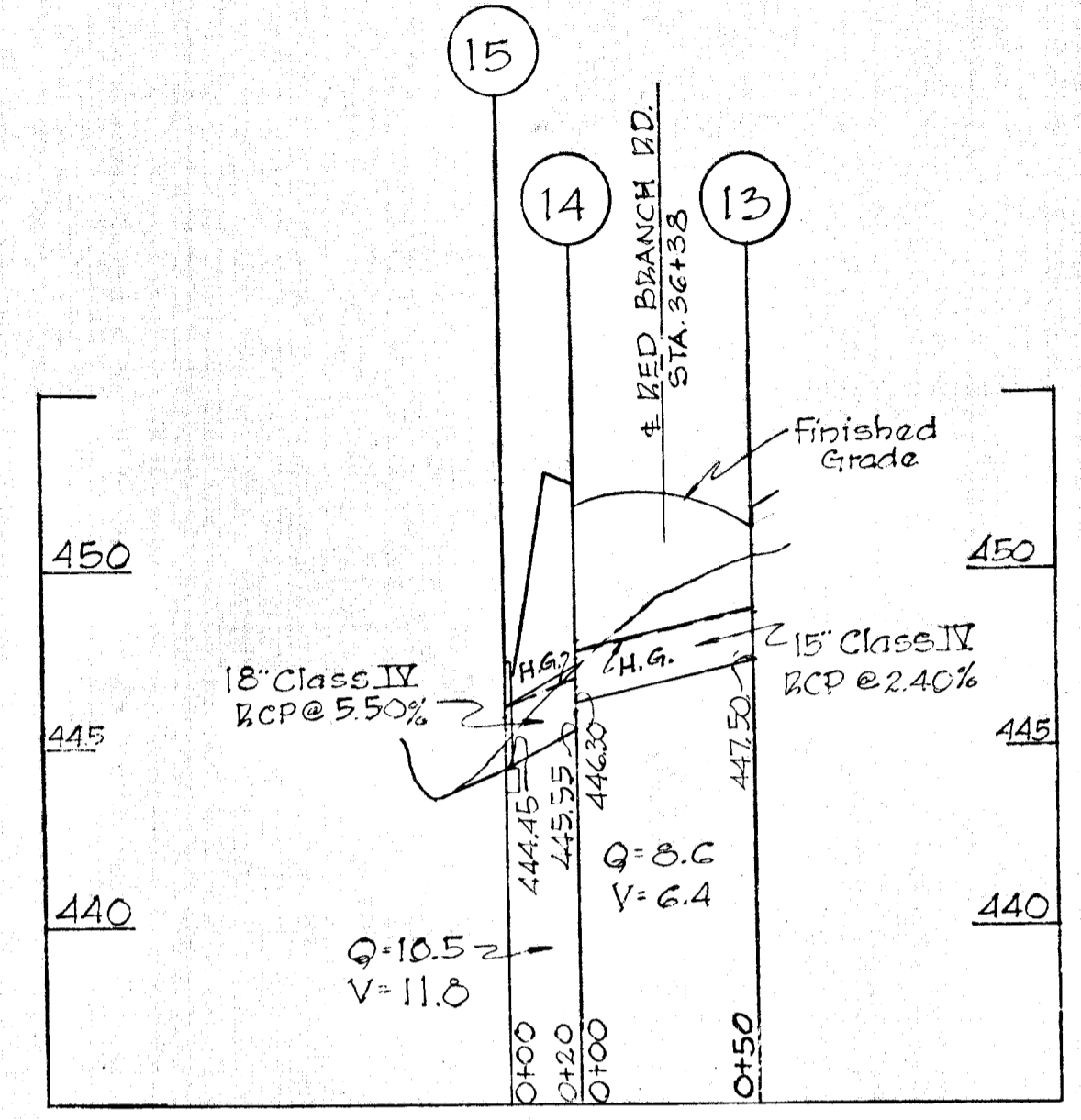
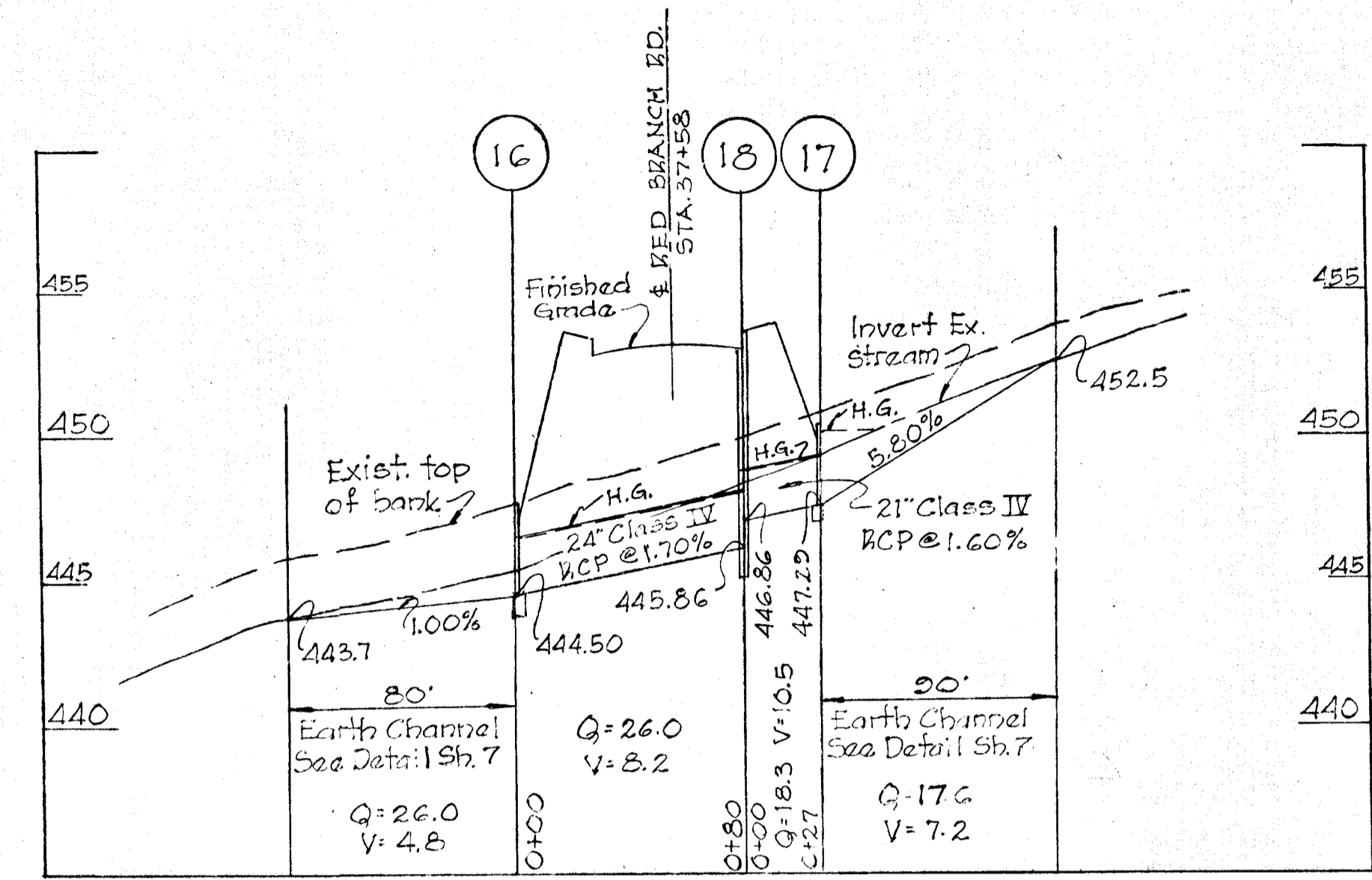
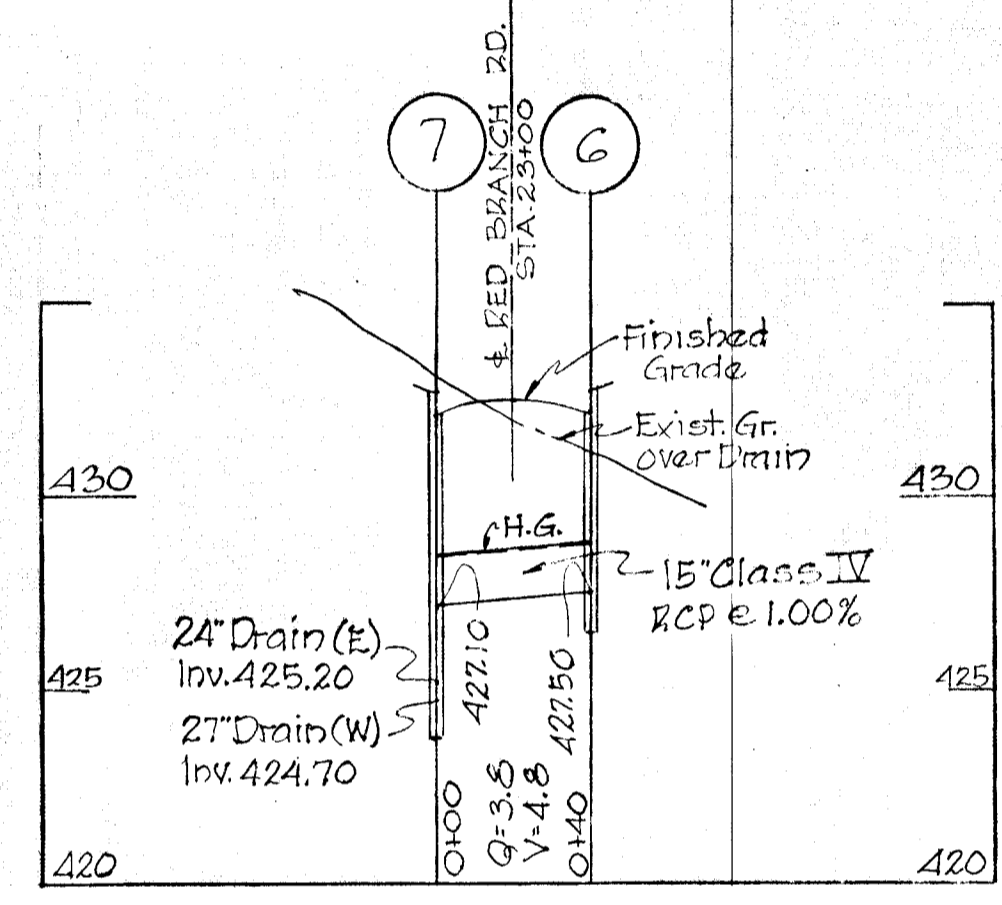
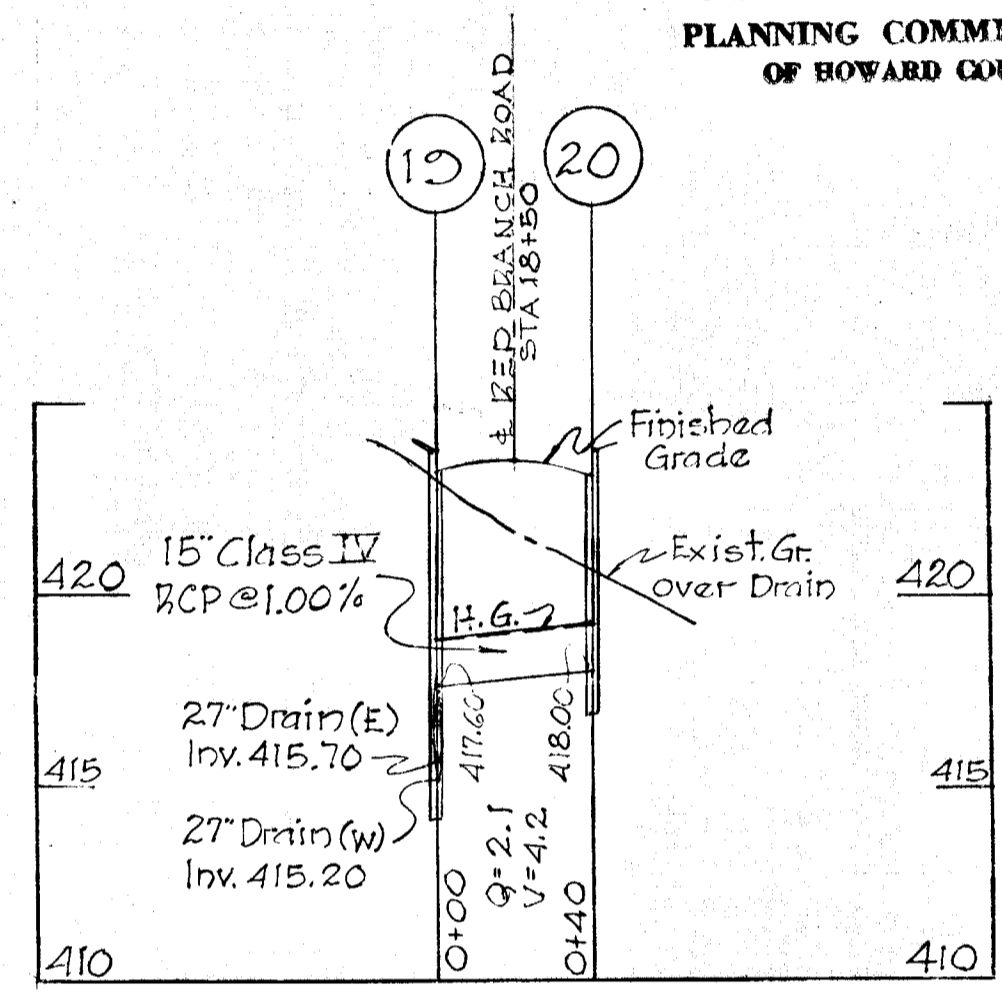
THE HOWARD RESEARCH AND DEVELOPMENT CORP.
THE VILLAGE OF CROSS KEYS
BALTIMORE, MARYLAND 21202

PURDUM & JESCHKE
ENGINEERS & LAND SURVEYORS
1023 NORTH CALVERT ST.
BALTIMORE, MARYLAND

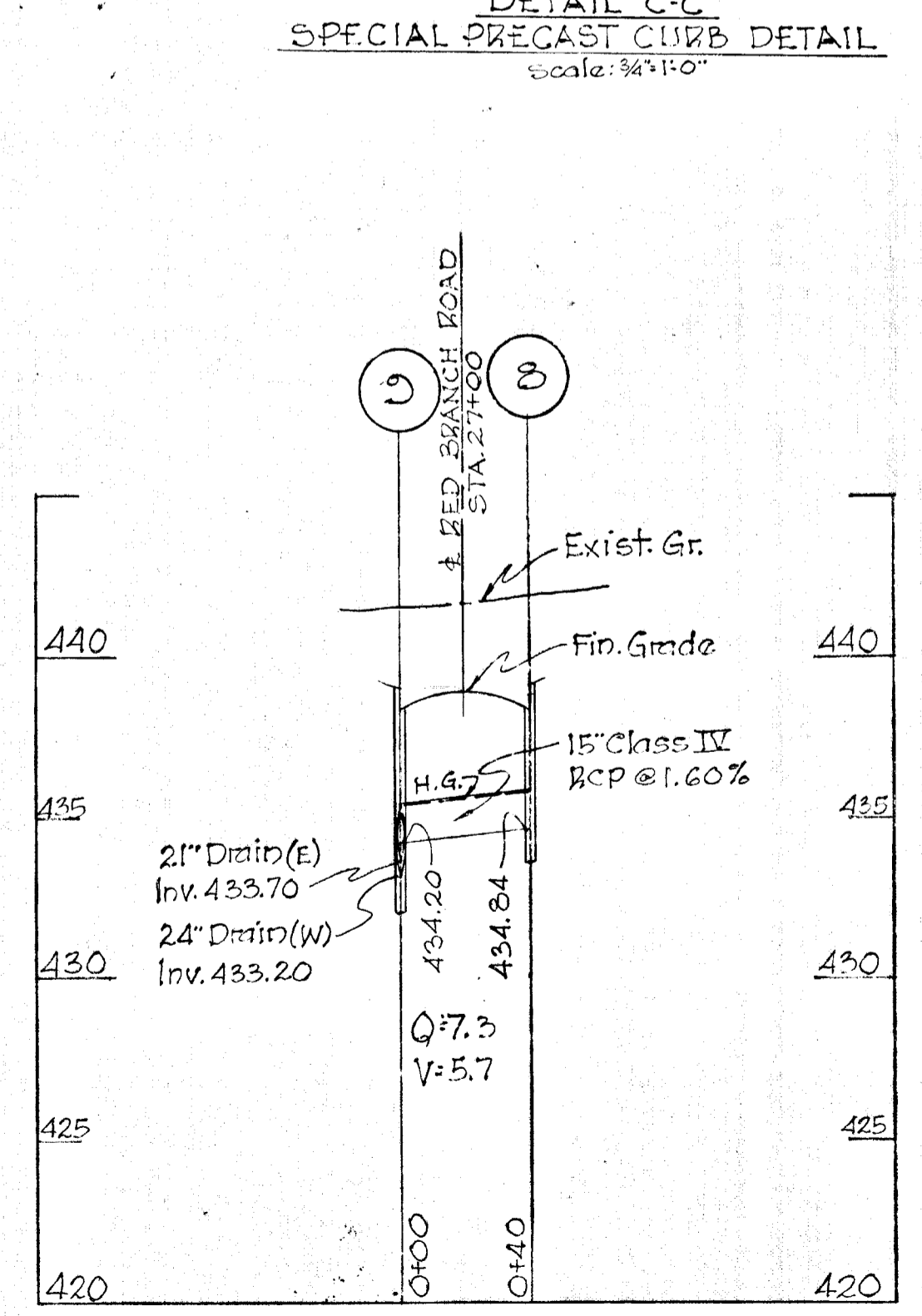
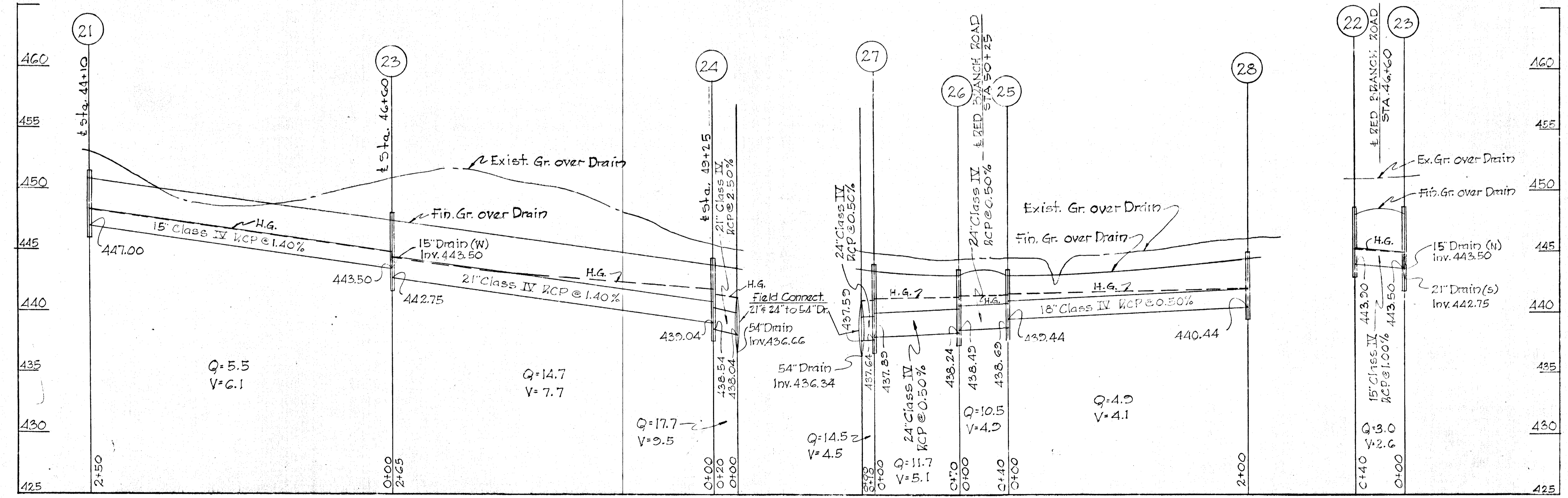
Approved by Howard County Planning Comm.
5-2-68
Date
5-1-68
5-2-68



APPROVED
PLANNING COMMISSION
OF HOWARD COUNTY



DETAIL-MODIFIED 'S' INLET



Handwritten initials or mark.

STORM DRAIN - DETAIL SHEET
SECTION 2

OAKLAND RIDGE INDUSTRIAL PARK
COLUMBIA

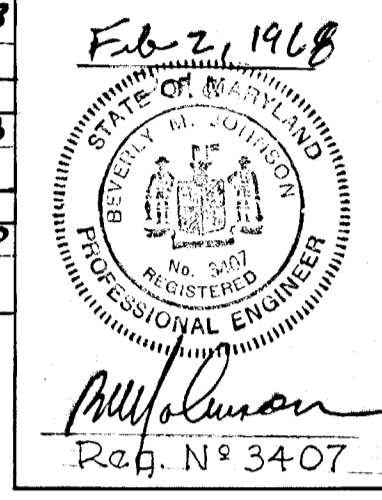
SECOND ELECTION DISTRICT

HOWARD COUNTY MD.
SCALE: AS SHOWN

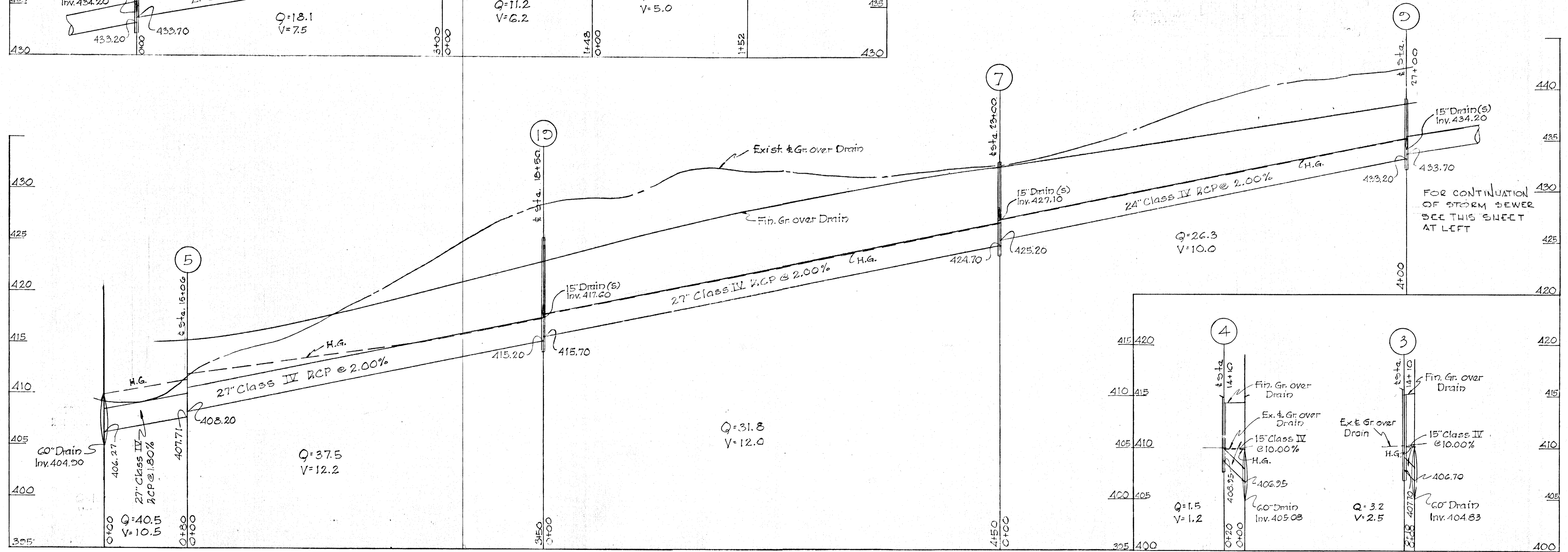
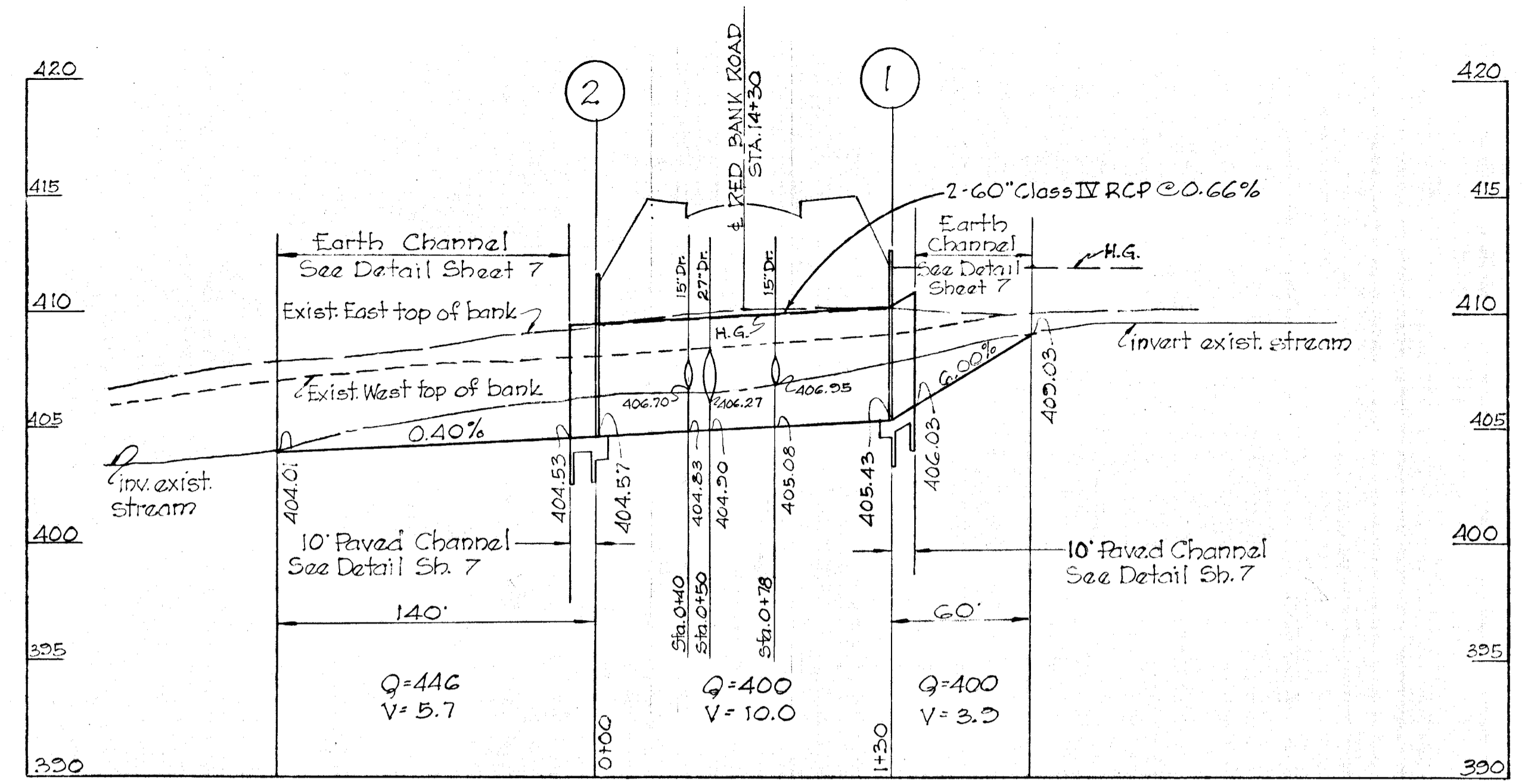
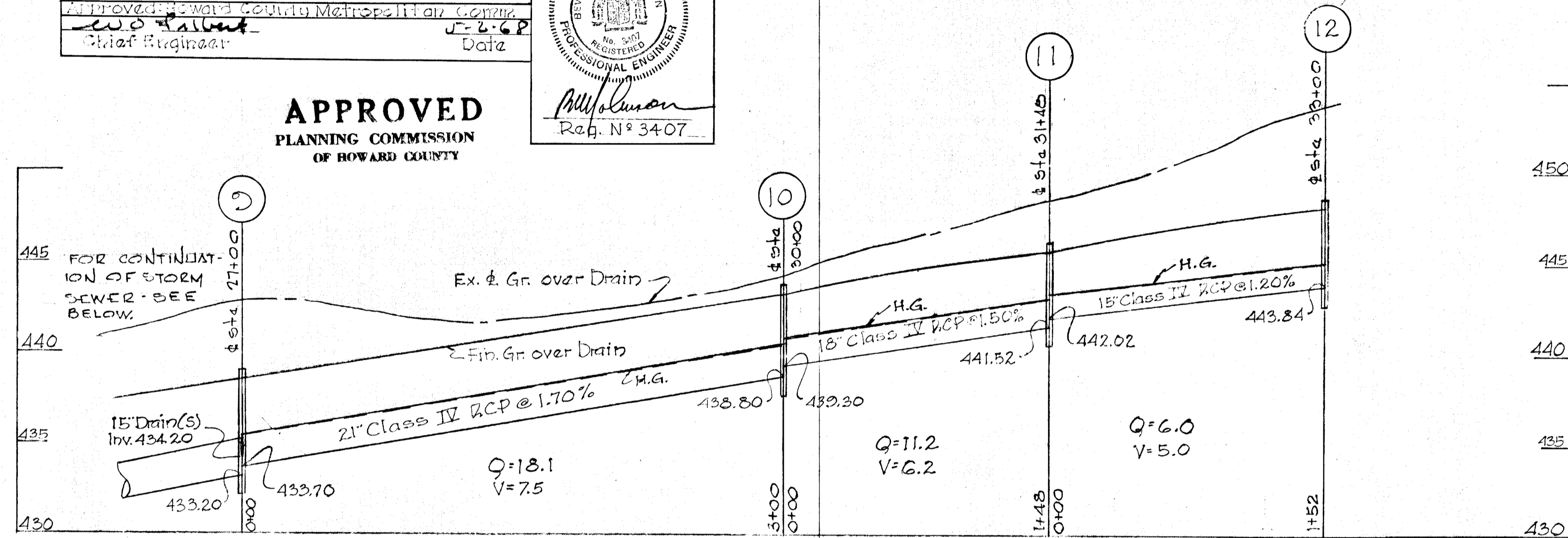
SHEET 9 OF 10

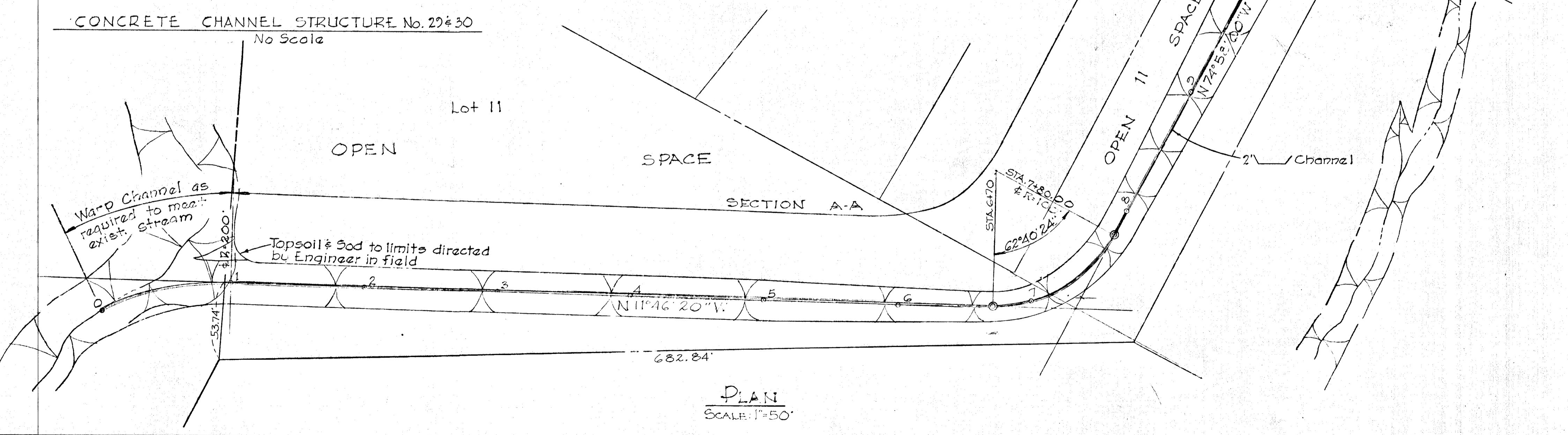
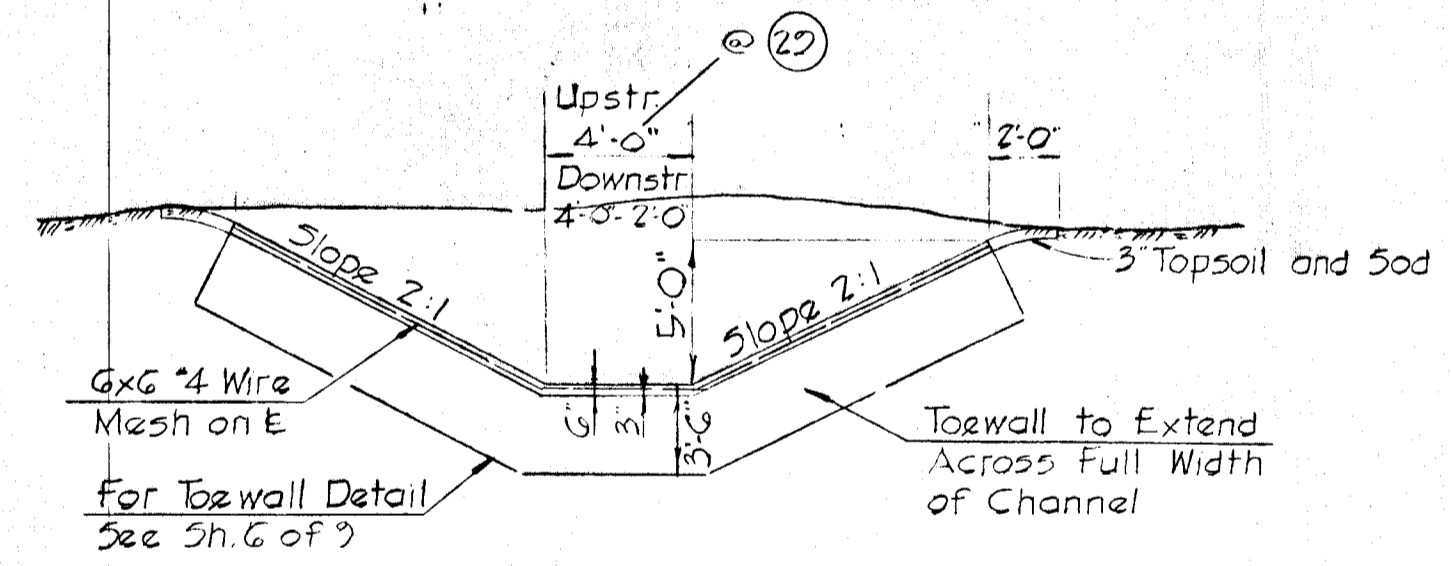
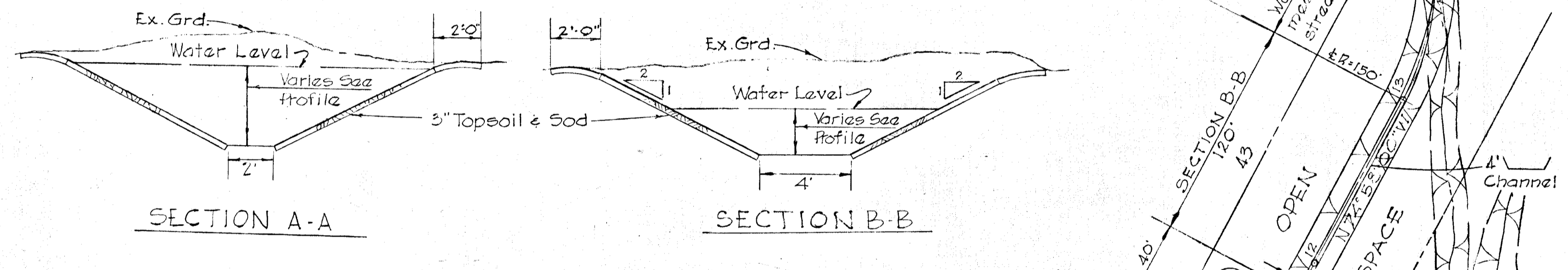
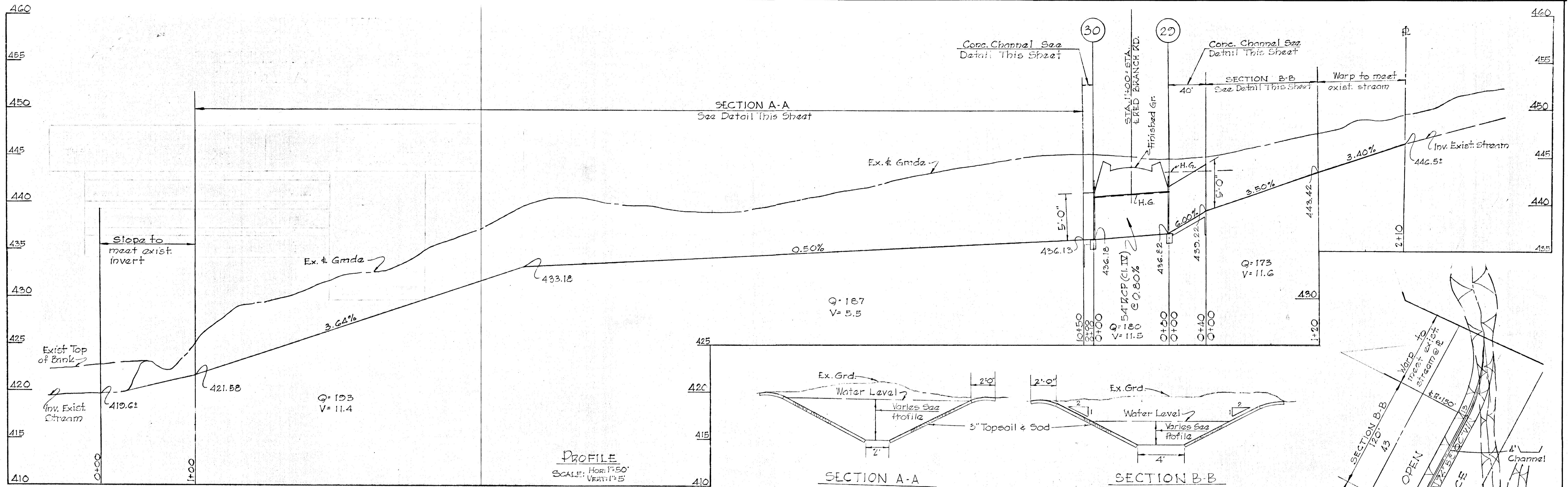
THE HOWARD RESEARCH AND DEVELOPMENT CORP. THE VILLAGE OF CROSS KEYS BALTIMORE, MARYLAND 21202	PURDUM & JESCHKE ENGINEERS & LAND SURVEYORS 1023 NORTH CALVERT ST. BALTIMORE, MARYLAND
---	---

Approved: Howard County Planning Comm.
H. Clawson 5-2-68
Chief Engineer
Approved: Howard County Roads Dept.
Lawrence H. McLean 5-7-68
Roads Superintendent
Approved: Howard County Metropolitan Comm.
J. L. G. P. 5-6-68
Chief Engineer



APPROVED
PLANNING COMMISSION
OF HOWARD COUNTY





STORM DRAIN DETAIL SHEET
SECTION 2
OAKLAND RIDGE INDUSTRIAL PARK
COLUMBIA

SECOND ELECTION DISTRICT HOWARD COUNTY MD.
SCALE: AS SHOWN

THE HOWARD RESEARCH AND DEVELOPMENT CORP.
THE VILLAGE OF CROSS KEYS
BALTIMORE, MARYLAND 21202

PURDUM & JESCHKE
ENGINEERS & LAND SURVEYORS
1023 NORTH CALVERT ST.
BALTIMORE, MARYLAND

Approved: Howard County Planning Comm. 5-2-68
Date
Approved: Howard County Roads Dept. 5-1-68
Date
Approved: Howard County Metropolitan Comm. 5-1-68
Date
Chief Engineer

2 Feb 68
Date
Approved: [Signature]
Req. No 3407

APPROVED
PLANNING COMMISSION
OF HOWARD COUNTY