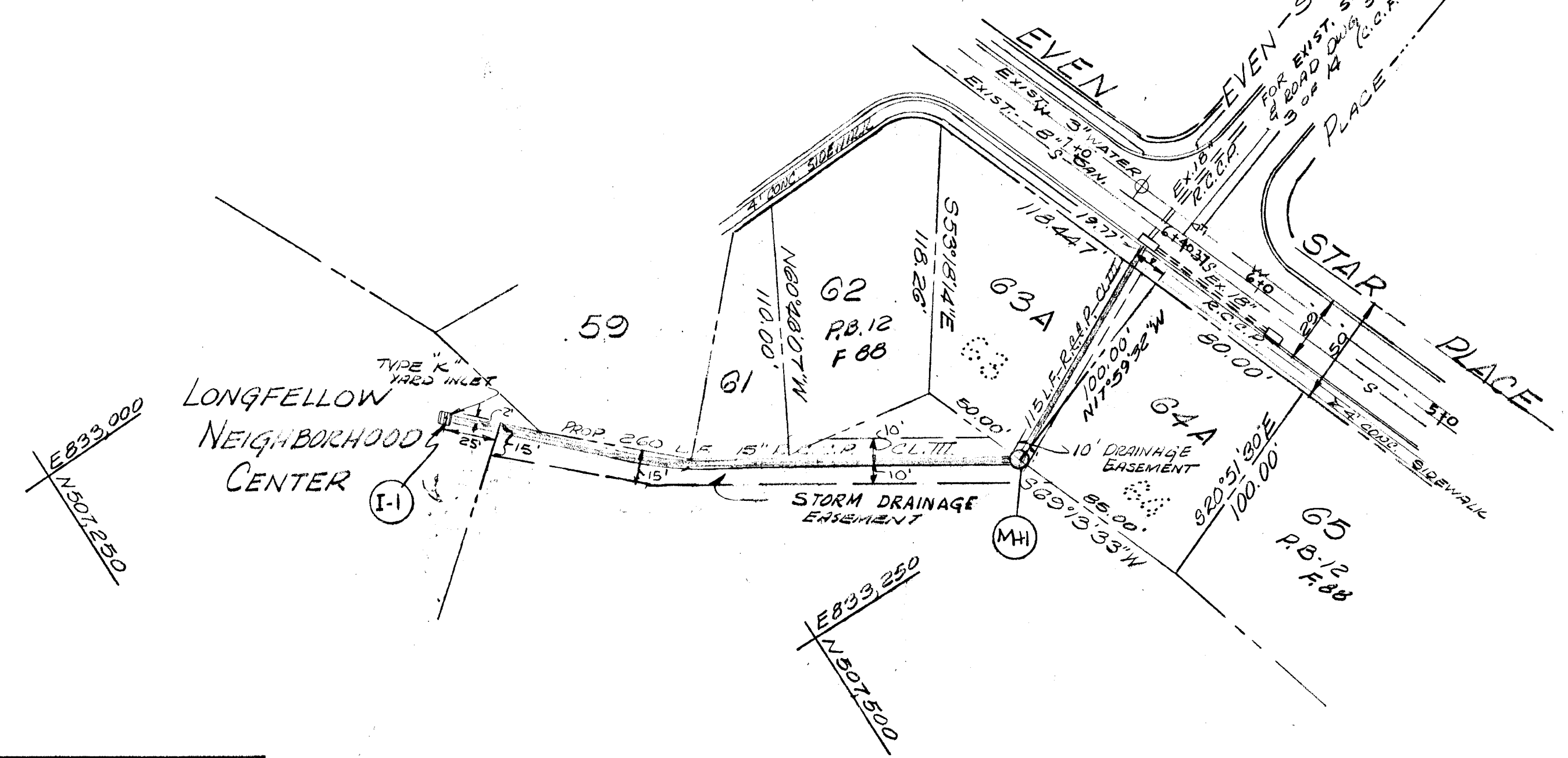


VILLAGE OF HARDER'S CHOICE
 SEC. 1
 LONGFELLOW AREA I
 R.B. 12 FOLIO 88

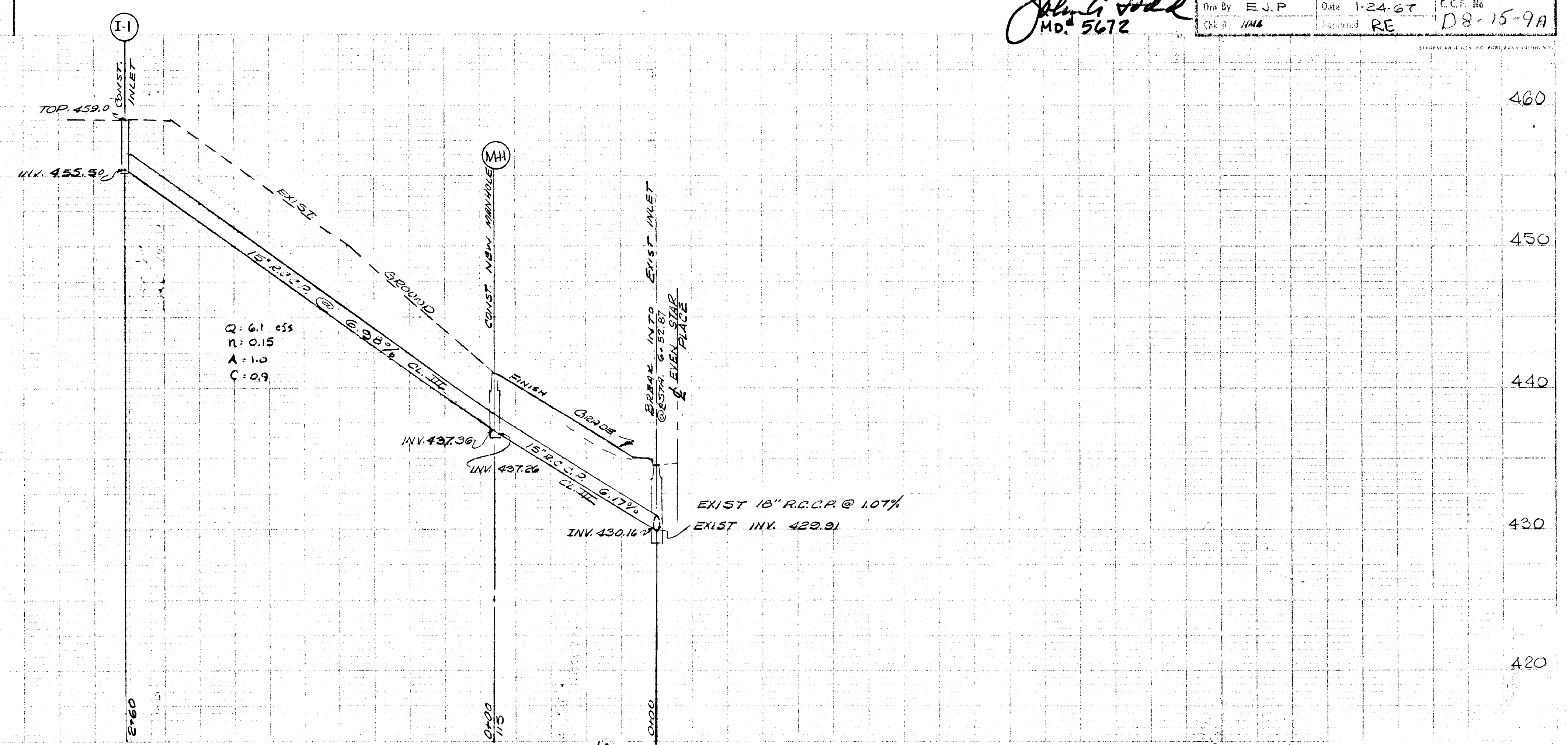


APPROVED HOWARD COUNTY PLANNING COMM.	
<i>J. N. Clawson</i>	3-19-68
SENIOR ENGINEER	DATE
APPROVED HOWARD COUNTY ROADS DEPT.	
<i>J. W. McLean</i>	3-14-68
ROADS SUPERINTENDENT	DATE
APPROVED HOWARD COUNTY METROPOLITAN COMM.	
<i>W. O. Felber</i>	3-14-68
CHIEF ENGINEER	DATE

HOWARD COUNTY
 BOARD OF EDUCATION

Rev. Date	Rev. No.	Revision Description
COLUMBIA MARYLAND		
OWNER AND DEVELOPER		
HOWARD RESEARCH AND DEVELOPMENT CORP.		
THE VILLAGE OF HARDER'S CHOICE, WASHINGTON, MARYLAND 21210		
PROJECT AREA LONGFELLOW AREA I		
SUBDIVISION LOTS 63-A#64-A		
PROJECT TITLE		
PROPOSED STORM DRAIN		
Des. By	E.J.P.	Scale 1"=50'
Drawn By	E.J.P.	Date 1-24-67
Checked By	H.M.A.	Approved RE
Drawn No.	L-13-A	Sheet No. D8-15-9A

John G. Ford
 No. 5672



Q: 6.1 cfs
 N: 0.15
 A: 1.0
 C: 0.9