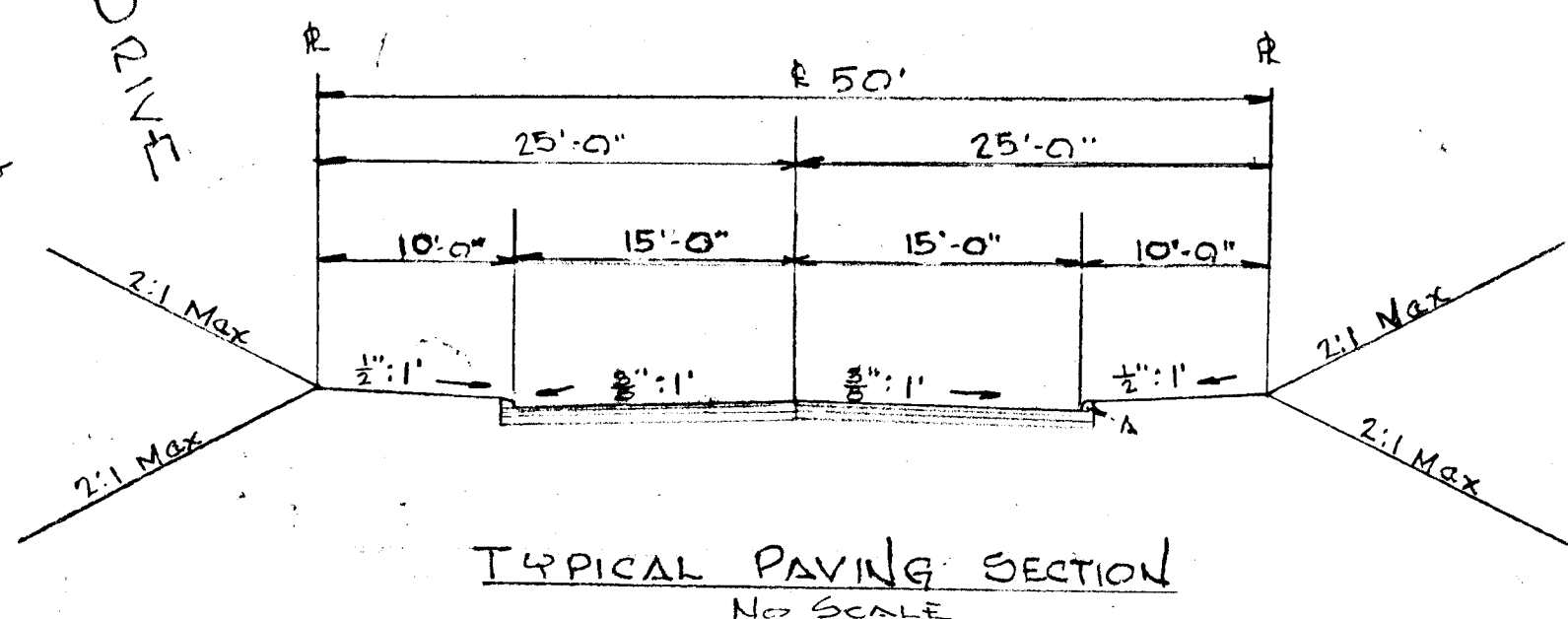
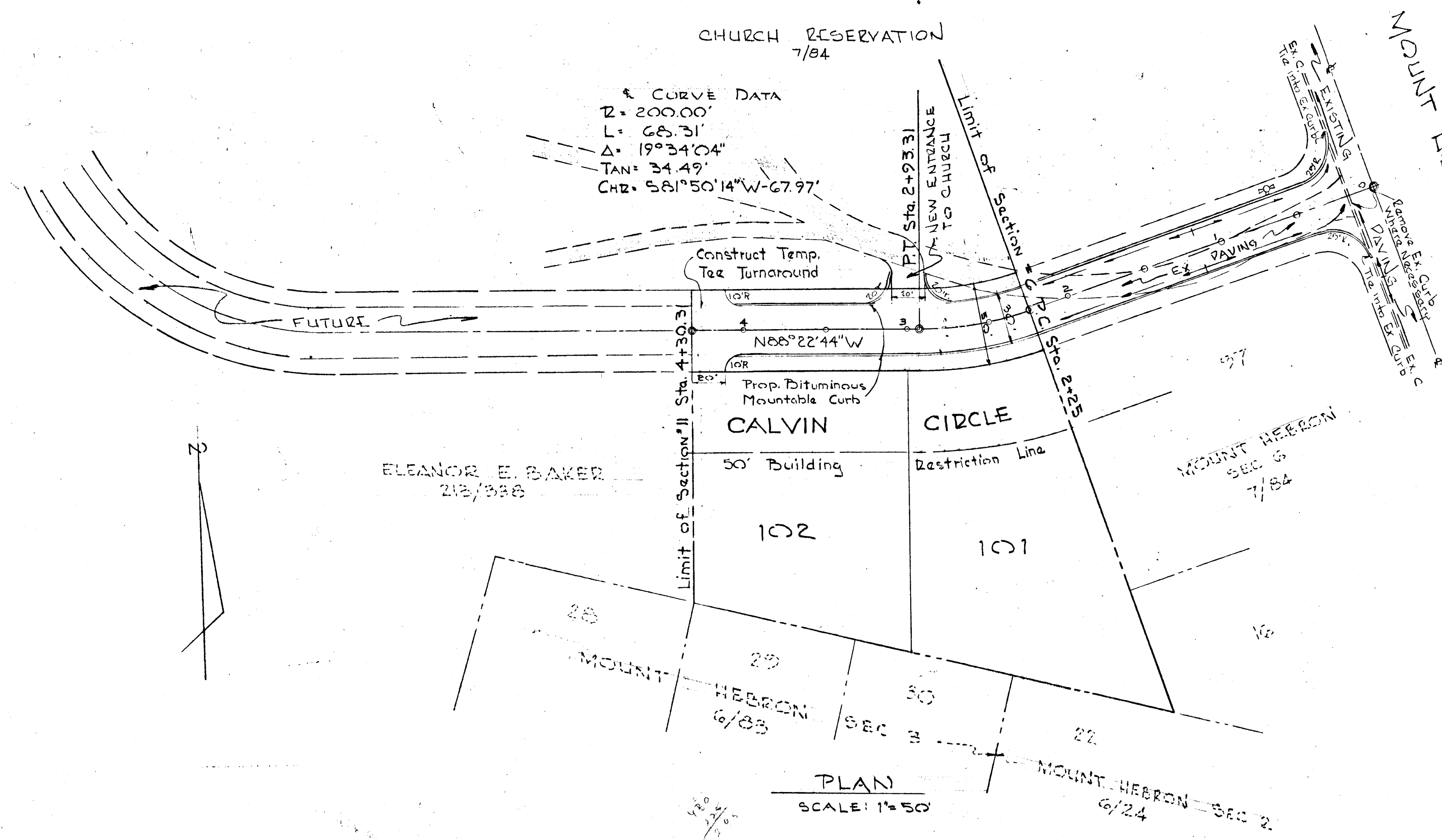


CHURCH RESERVATION  
7/84

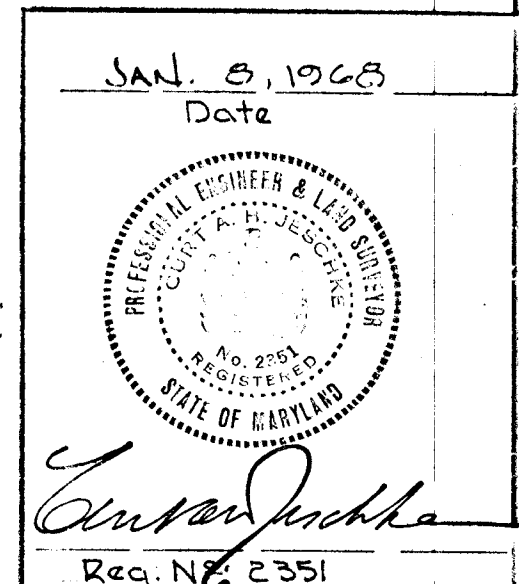
Curve Data  
R = 200.00'  
L = 65.31'  
Δ = 19°34'04"  
TAN = 34.49'  
CH2 = 581°50'14"W - 67.97'

GENERAL NOTES

- 1) FOR DETAILS OF BITUMINOUS CURB SEE DRAWG D-39 PAGE 24, OF THE ABOVE MENTIONED SPECIFICATIONS.
- 2) PAVING ALTERNATES D-3 pg 32, D-4 pg 33 OR D-5 pg. 60, OF HOWARD CO. ROAD STANDARD SPEC.



TYPICAL PAVING SECTION  
No SCALE



DEPARTMENT OF PUBLIC WORKS  
Graville W. Meland 10-8-69  
Chief, Bureau of Highways Date  
OFFICE OF PLANNING AND ZONING

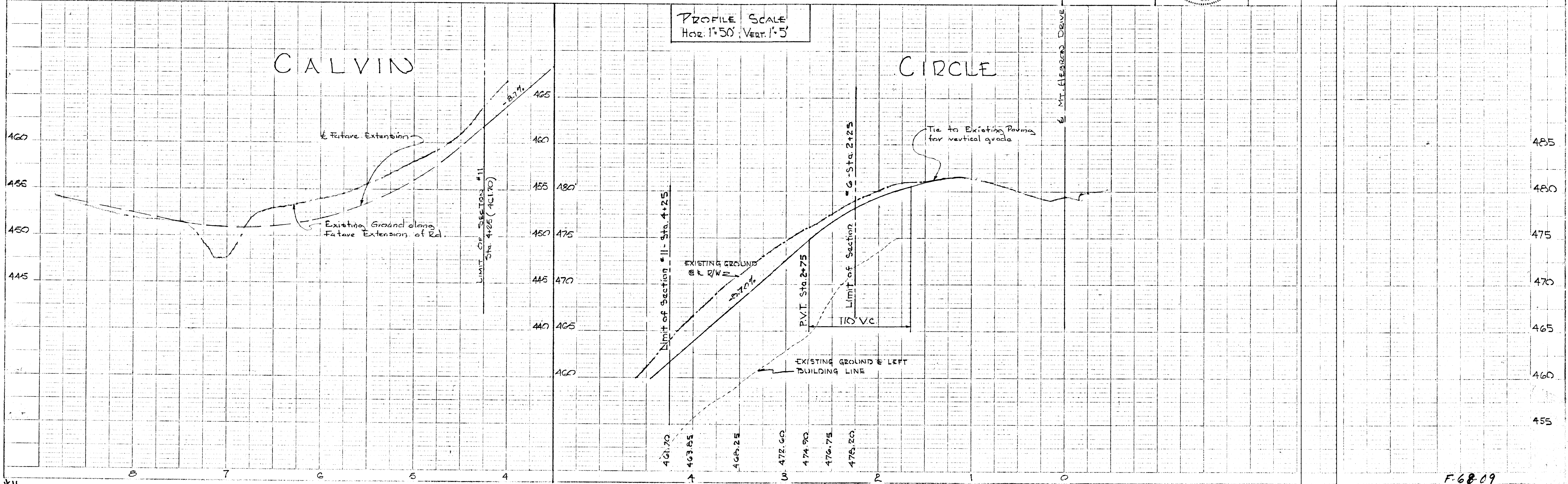
OWNER / DEVELOPER  
MT. HEBRON INC.  
410 MT. HEBRON DRIVE  
ELLICOTT CITY, MARYLAND  
J. H. Clawson 9-17-69  
Chief Engineer Date  
Division of Land Development

PURDUM  
AND  
JESCHKE  
ENGINEERS  
24 PARK AVE.  
ELLICOTT CITY, MD.



PLAN & PROFILE: CALVIN CIRCLE  
SECTION No 11  
MT. HEBRON  
2<sup>ND</sup> ELECTION DIST. HOWARD COUNTY, MD.  
14 SEPT. 1967  
9 SEPT. 1969  
SCALE: AS SHOWN

PROFILE SCALE  
Horz. 1" = 50' VERT. 1" = 5'



PLAN  
NO. 1  
DATE 9/17/69

PROFILE  
NO. 1  
DATE 9/17/69