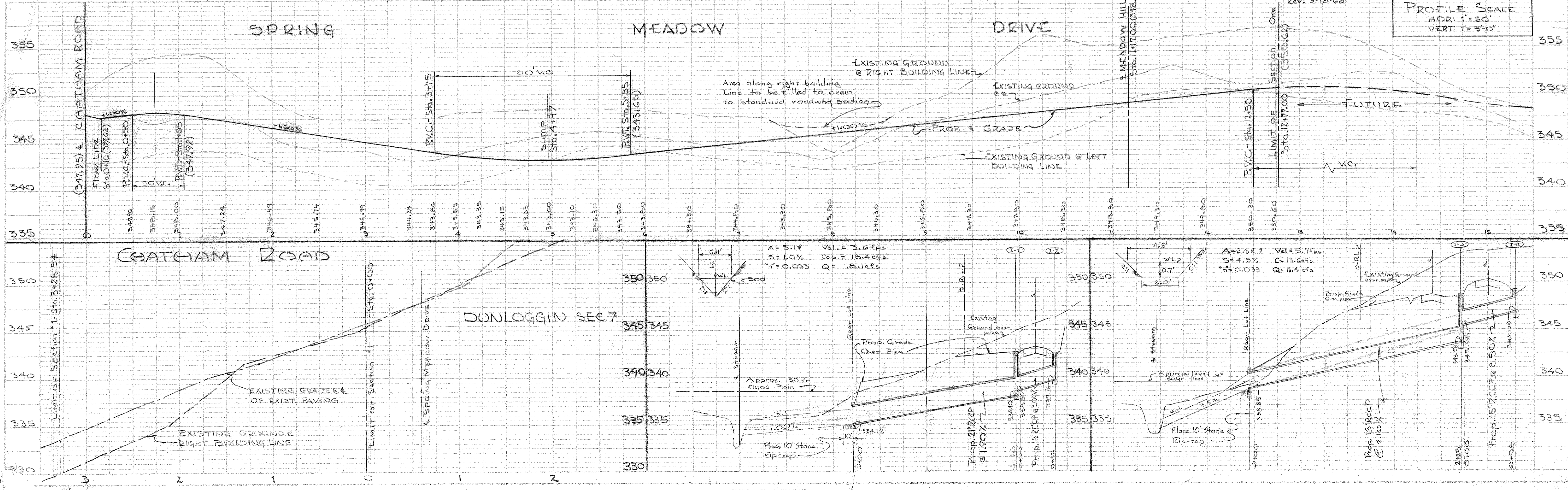
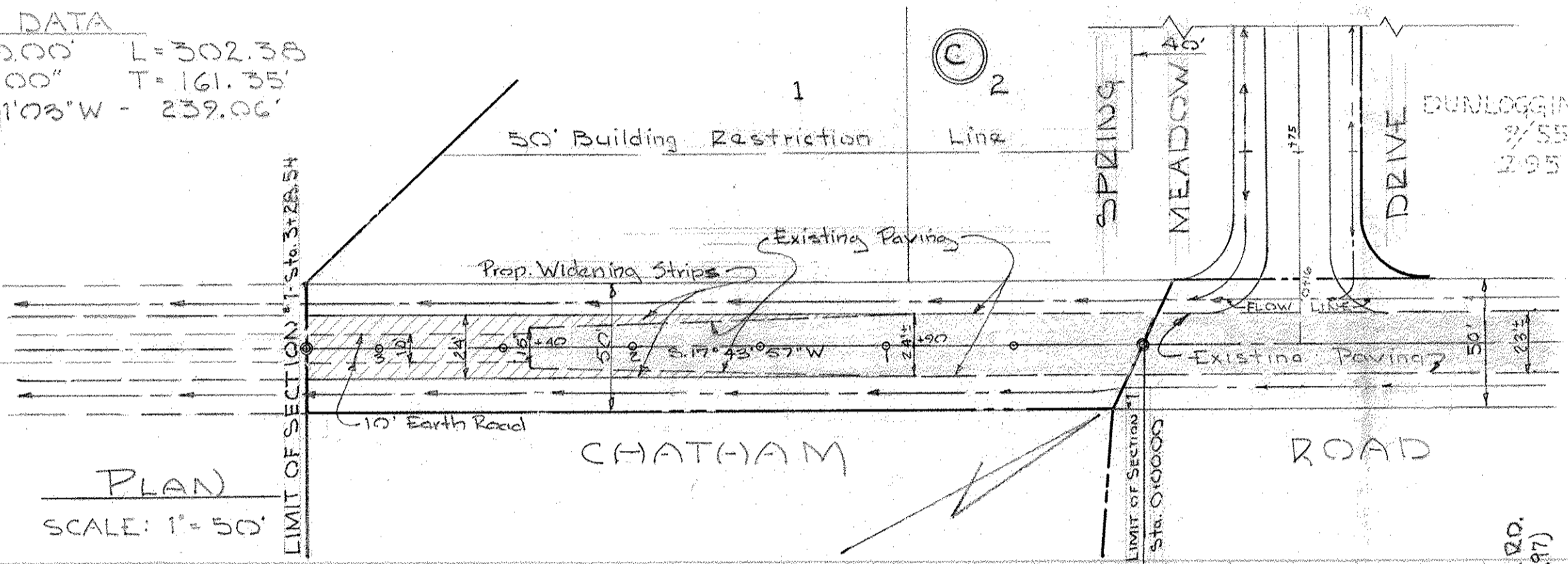
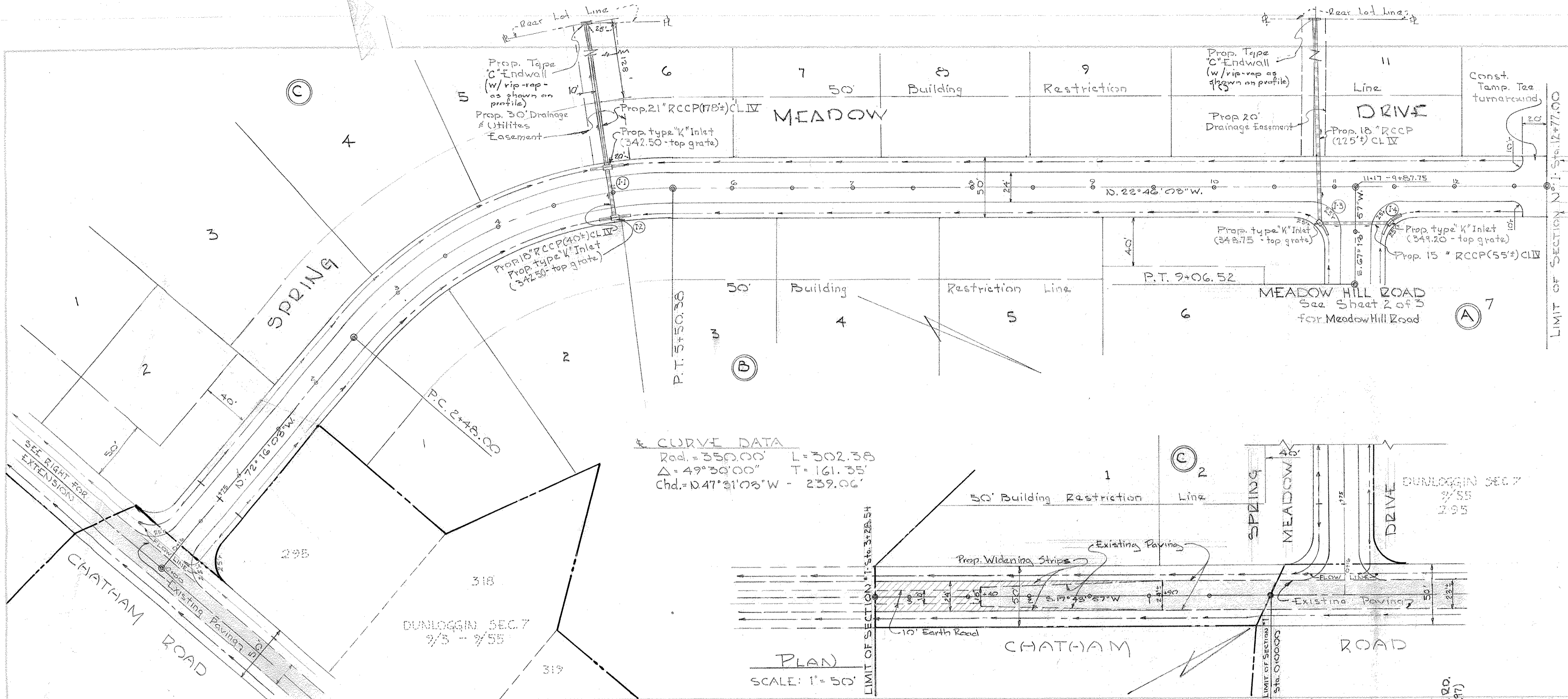


DATE	
BY	
CHECKED	
DESIGNED	
NOTED	
PLANNED	
NO.	

DATE	
BY	
CHECKED	
DESIGNED	
NOTED	
PLANNED	
NO.	



Date: 12-19-1967
 Date:

 Reg. No. 2351

OWNER & DEVELOPER:
 The Dunlaggin Corp. of Md. Co.
 607 Balto. National Pike
 Ellicott City, Maryland

ENGINEER:
 PURDUM & WESCHKE
 24 Park Ave.
 Ellicott City, Maryland

APPROVED: Howard County Planning Comm.
 J. J. Lawson, Jr. 3-20-68
 Senior Engineer Date

APPROVED: Howard County Roads Dept.
 Thomas Schell 3-19-68
 Roads Superintendent Date

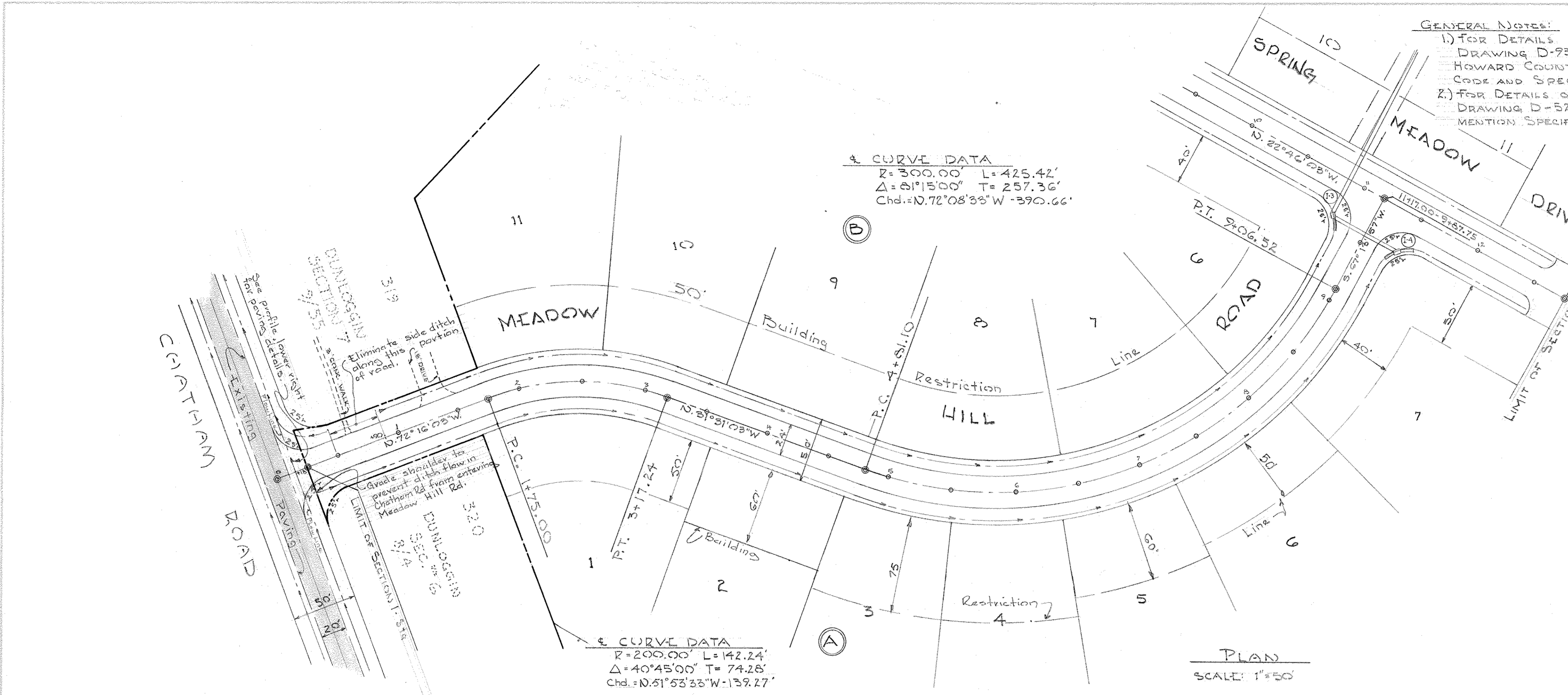
APPROVED: Howard County Metropolitan Comm.
 W. O. Albert 3-19-69
 Chief Engineer Date

PLAN & PROFILE: SPRING MEADOW DRIVE & CHATHAM ROAD
 SECTIONS NO. ONE
DUNLOGGIN II
 SECOND ELECTION DISTRICT - HOWARD COUNTY, MARYLAND

Dec. 19, 1967 SCALE: AS SHOWN
 Rev: 1-23-68 Sheet 1 of 3
 Rev: 2-18-68

PLAN
 DRAWN BY: [blank]
 CHECKED BY: [blank]
 DATE: [blank]

PROFILE
 DRAWN BY: [blank]
 CHECKED BY: [blank]
 DATE: [blank]



OWNER & DEVELOPER: THE DUNLOGGIN CORP. OF HO. CO. 687 BALTO. NATIONAL PK. ELICOTT CITY, MARYLAND	APPROVED: HOWARD COUNTY PLANNING COMM. <i>J. H. Clavson</i> Senior Engineer Date: 3-20-68
ENGINEER: PURDUM & WESCHKE 24 PARK AVE. ELICOTT CITY, MARYLAND	APPROVED: HOWARD COUNTY ROADS DEPT. <i>Harmon Schill</i> Roads Superintendent Date: 3-19-68
Date: Dec. 19, 1967	APPROVED: HOWARD COUNTY METROPOLITAN COMM. <i>W. O. Falbert</i> Chief Engineer Date: 3-19-68

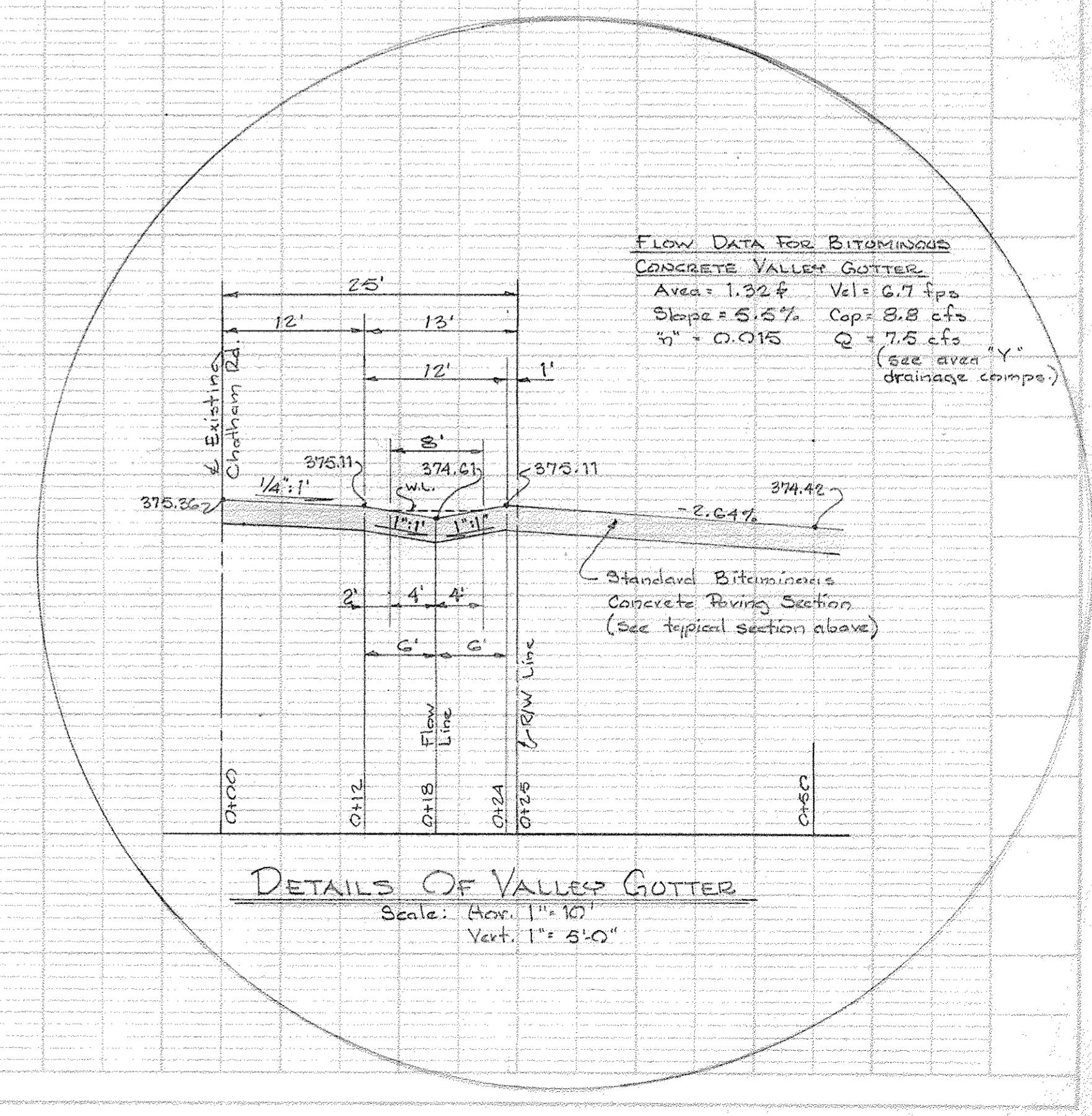
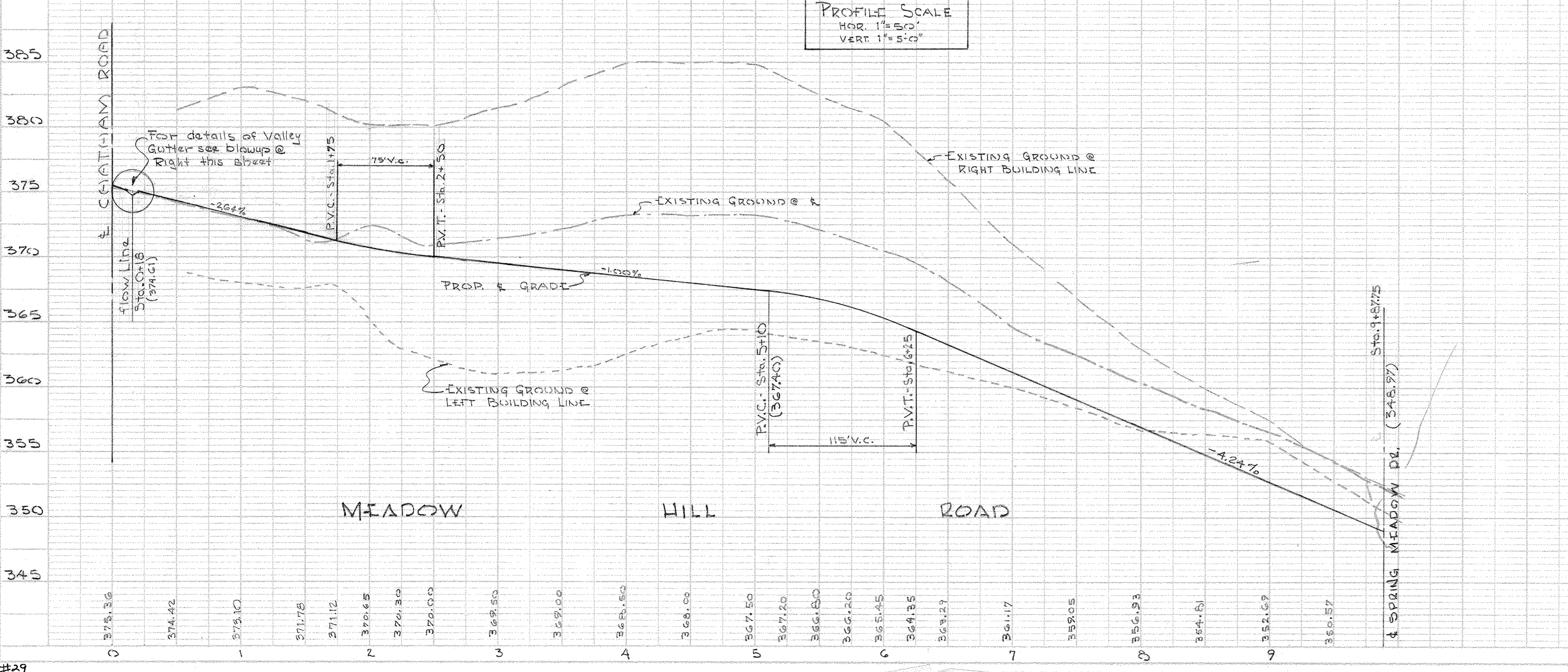
PLAN & PROFILE: MEADOW HILL ROAD SECTION N^o 1

DUNLOGGIN II

SECOND-ELECTION DISTRICT - HOWARD COUNTY, MARYLAND

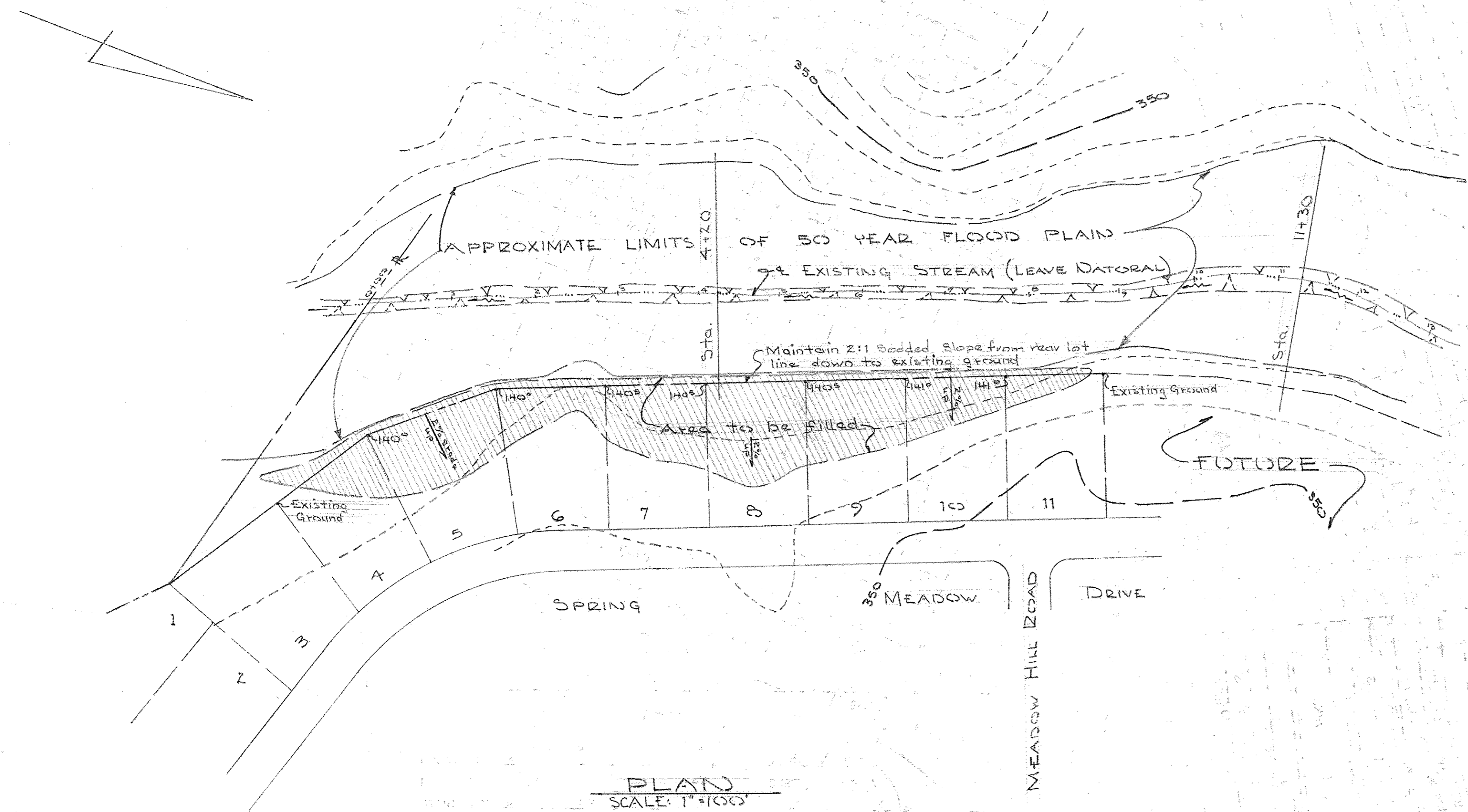
Dec. 19, 1967
 Rev: 1-23-68
 Sheet 2 of 3

SCALE: AS SHOWN



DATE	
BY	
REVISIONS	
NO.	DESCRIPTION
1	PLANNING
2	DESIGN
3	CONSTRUCTION
4	AS BUILT
5	FINAL
6	
7	
8	
9	
10	
11	
12	
13	
14	
15	

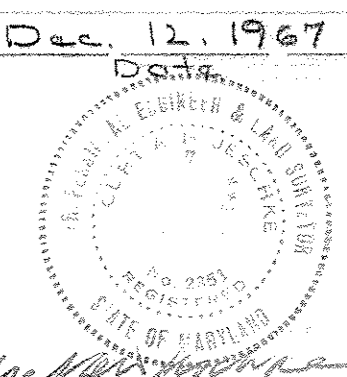
DATE	
BY	
REVISIONS	
NO.	DESCRIPTION
1	PLANNING
2	DESIGN
3	CONSTRUCTION
4	AS BUILT
5	FINAL
6	
7	
8	
9	
10	
11	
12	
13	
14	
15	



PLAN
SCALE: 1"=100'

OWNER & DEVELOPER: Dec. 12, 1967

The Dunloggin Corp. of Ho. Co.
687 Baltimore National Pike
Ellicott City, Maryland.



ENGINEER:
PURDUM & GESCHKE
24 Park Avenue
Ellicott City, Maryland.

J. Paul A. Eberle
Reg. No. 2351

APPROVED: HOWARD COUNTY PLANNING COMM.

J. H. Clauson
Senior Engineer
Date: 3-20-68

APPROVED: HOWARD COUNTY ROADS DEPT.

Herman Schell
Roads Superintendent
Date: 3-19-68

APPROVED: HOWARD COUNTY METROPOLITAN COMM.

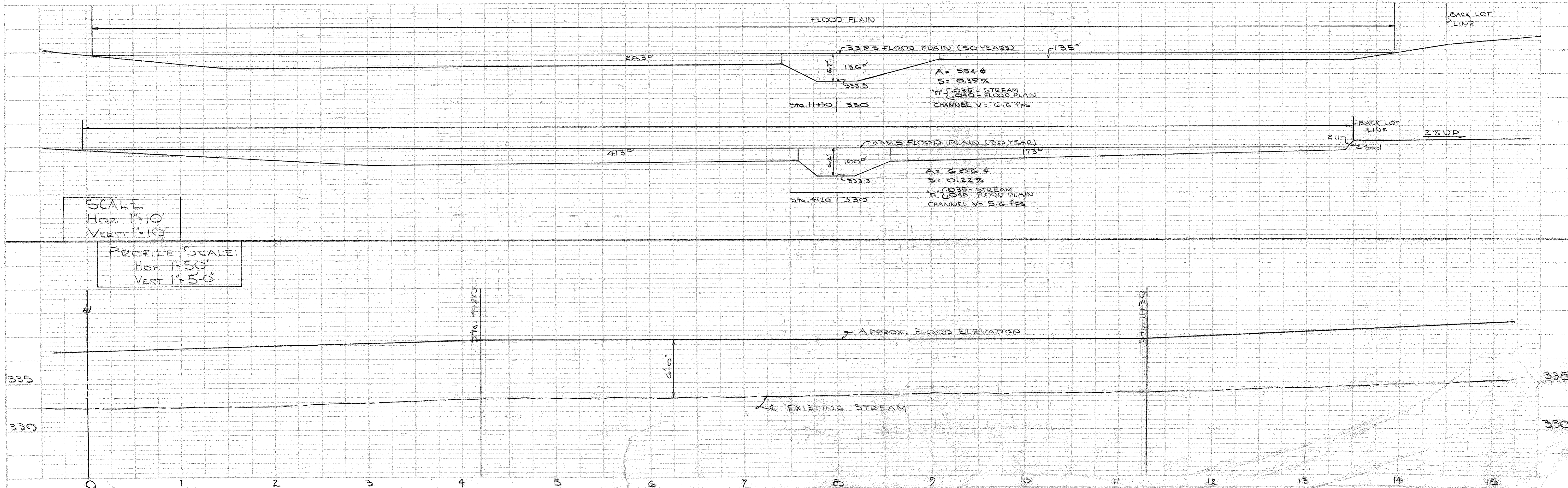
W. O. Albert
Chief Engineer
Date: 3-19-68

FLOOD PLAINS PLAN & DETAILS
SECTION N^o 1

DUNLOGGIN II

Second Election District - Howard County, Maryland

December 12, 1967 Scale: As Shown
Rev: 1-23-68 Sheet 3 of 3



SCALE
HOR. 1"=10'
VERT. 1"=10'

PROFILE SCALE:
HOR. 1"=50'
VERT. 1"=5'-0"