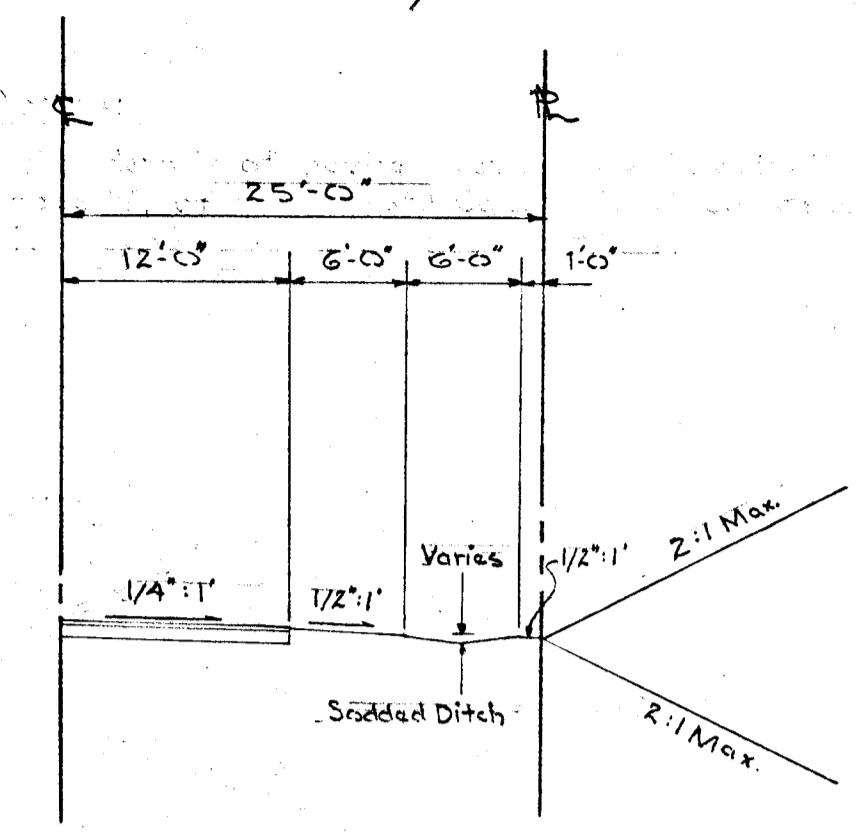


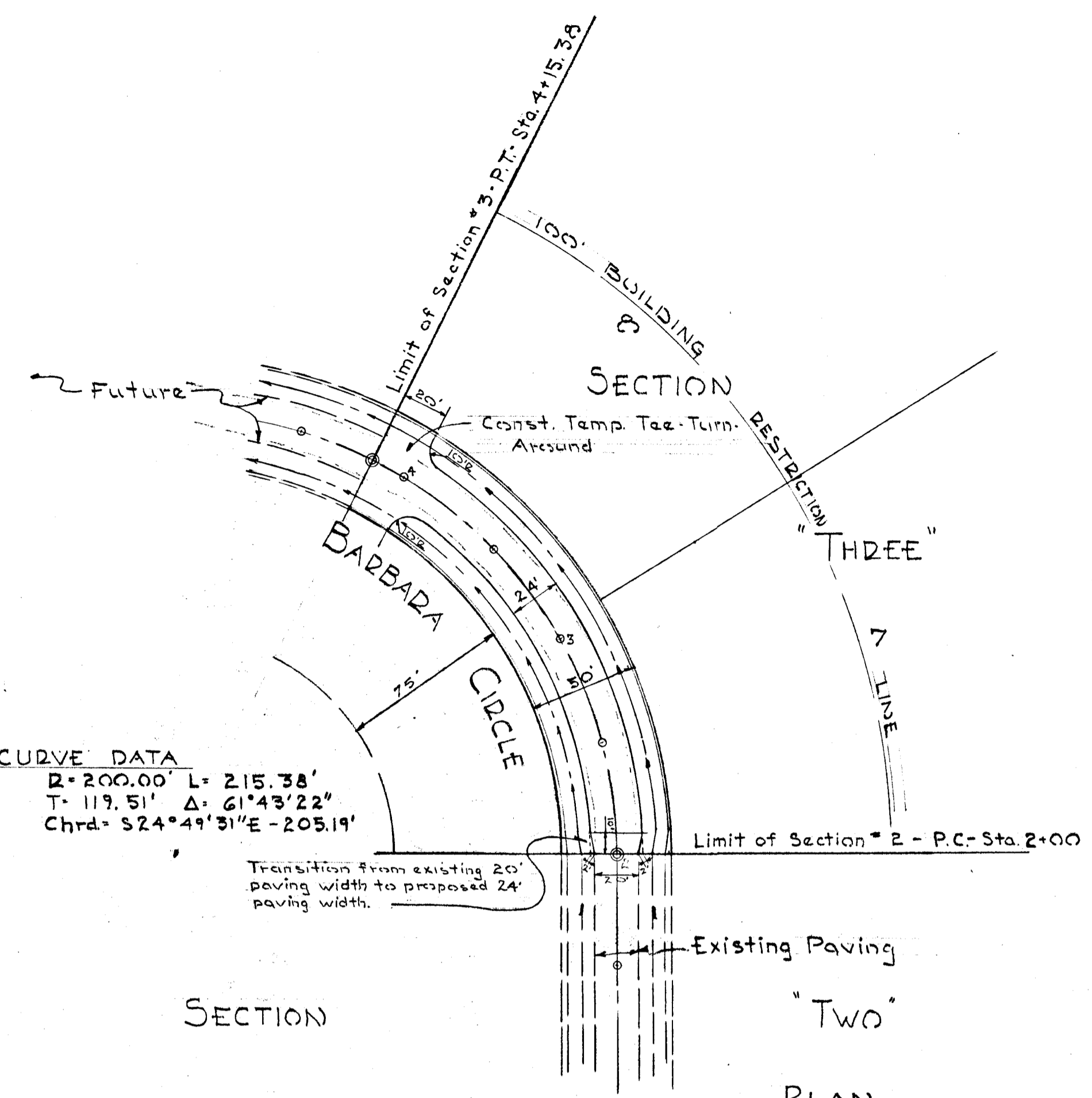
1/2 TYPICAL SEC.
30' R/W



SCALE: 1"=10'

Minimum 7" of compacted Crushed Run M.S.D.C. Spec.
2 lbs. Calcium Chloride per Sq. Yd. - leave 30 days
5/10 gal. oil per Sq. Yd. - #3 stone 75 lb. per Sq. Yd.
7/10 gal. oil per Sq. Yd. - #4 stone 50 lb. per Sq. Yd.
5/10 gal. oil per Sq. Yd. - #7 stone 30 lb. per Sq. Yd.
(This surface type to be constructed in accordance
with Article C-30 Howard County Road Spec.)

CURVE DATA
R = 200.00' L = 215.38'
T = 119.51' Δ = 61°43'22"
Chrd. S24°49'31"E - 205.19'



PLAN
SCALE: 1"=50'

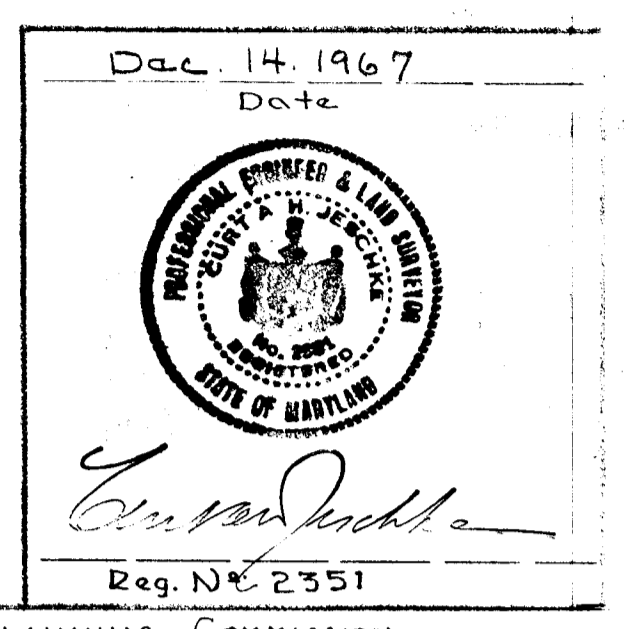
APPROVED
PLANNING COMMISSION
OF HOWARD COUNTY

OWNER / DEVELOPER
DOMINIC & LEXIE
MONTICELLO
COOKSVILLE,
MARYLAND

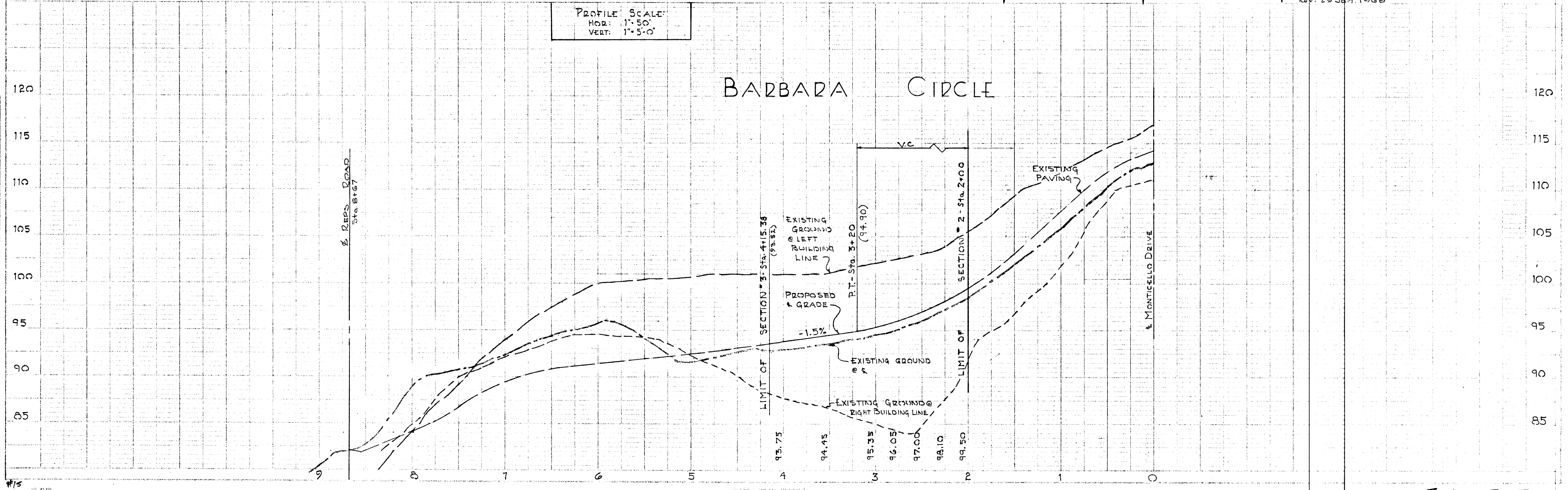
PURDUM
& JESCHKE
ENGINEERS
LAND SURVEYORS
24 PARK AVENUE
ELLCOTT CITY MARYLAND

APPROVED: HOWARD COUNTY PLANNING COMMISSION
J.H. Clawson, Jr. Senior Engineer Date: 2-20-68
APPROVED: HOWARD COUNTY ROADS DEPARTMENT
B.A. Ireland Roads Superintendent Date: Feb 20, 1968
APPROVED: HOWARD COUNTY METROPOLITAN COMMISSION
J.O. Fulbert Chief Engineer Date: 2-22-68

PLAN & PROFILE - BARBADA CIRCLE
SECTION * 3
VILLA MONTICELLO
4TH ELECTION DISTRICT - HOWARD COUNTY, MARYLAND
DEC. 14, 1967 SCALE: AS SHOWN
REV. 29 Jan. 1968



PROFILE SCALE:
HOR: 1"=50'
VERT: 1"=5'-0"



F-67-85