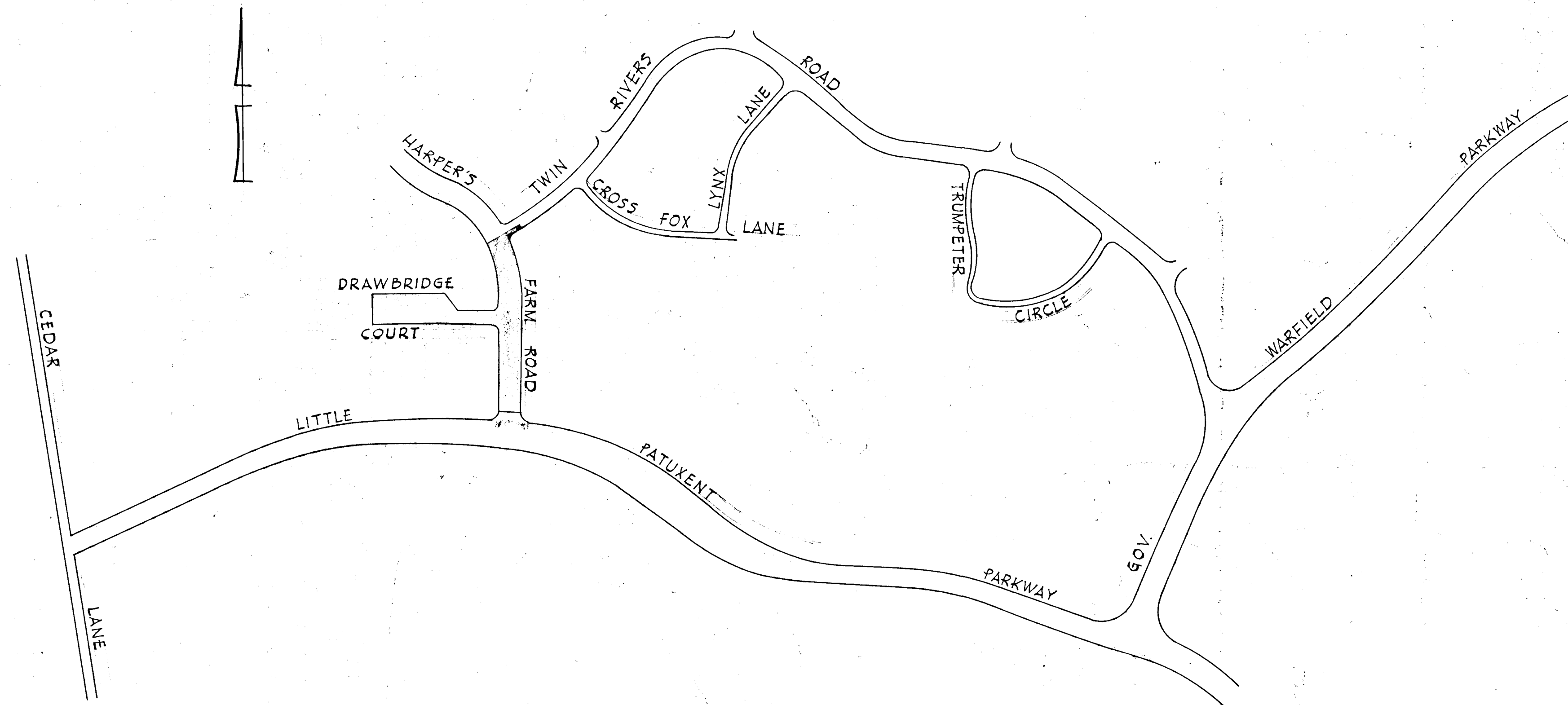
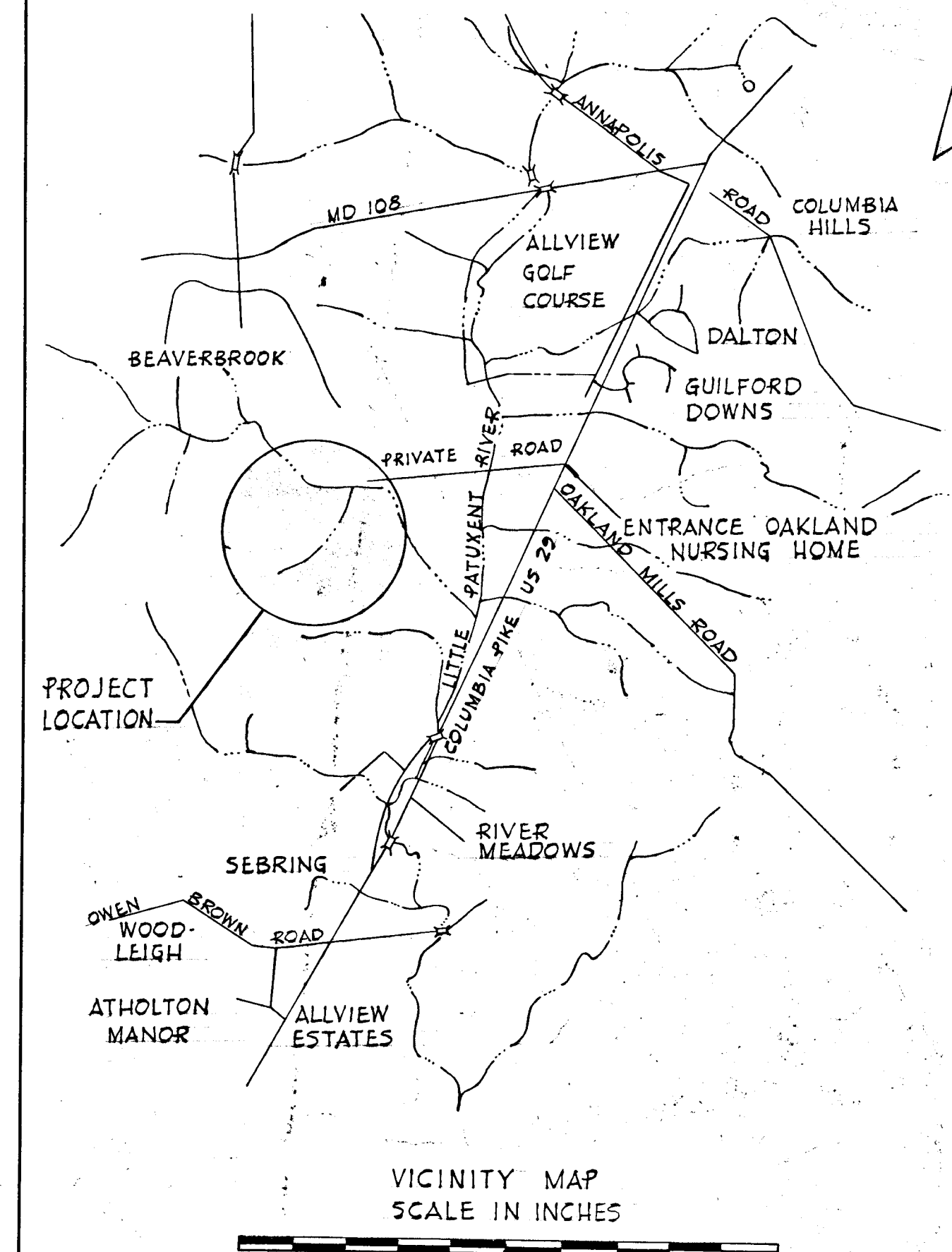


**COLUMBIA**  
**ELECTION DISTRICT 5**  
**HARPER'S FARM ROAD**  
 THE VILLAGE OF HARPER'S CHOICE  
 SECTION 3 AREA 1  
**HOWARD RESEARCH & DEVELOPMENT CORP.**  
**HOWARD COUNTY, MARYLAND**  
 JANUARY 15, 1968



INDEX		
DESCRIPTION	STREET	DRWG NO.
TITLE SHEET		1
PLAN & PROFILE	HARPER'S FARM ROAD	2
PLAN & PROFILE	HARPER'S FARM ROAD	3
PLAN & PROFILE	DRAWBRIDGE COURT	4
DETAIL SHEET	STORM DRAIN PROFILES	5

17 Nov 1967  
DATE

*J. H. Lawson*  
REG. NO. 3407

**APPROVALS**

HOWARD COUNTY PLANNING COMMISSION *J. H. Lawson 2-16-68*  
SENIOR ENGINEER

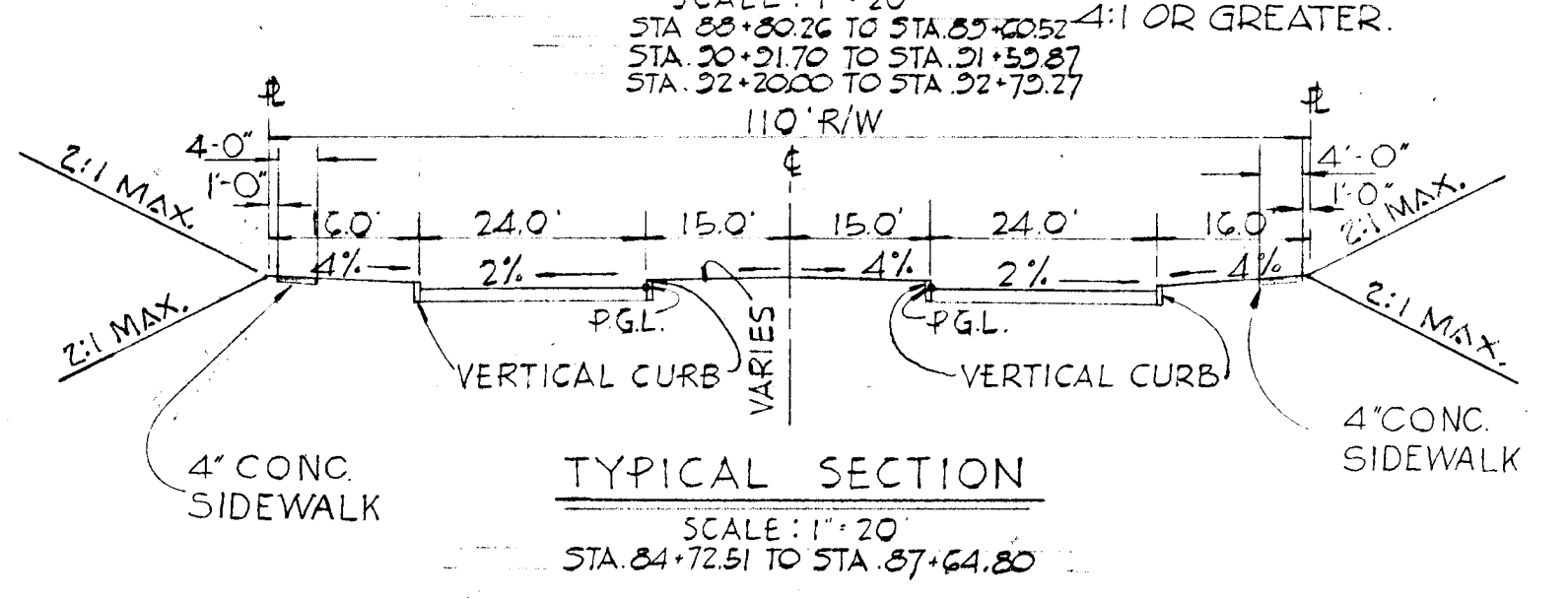
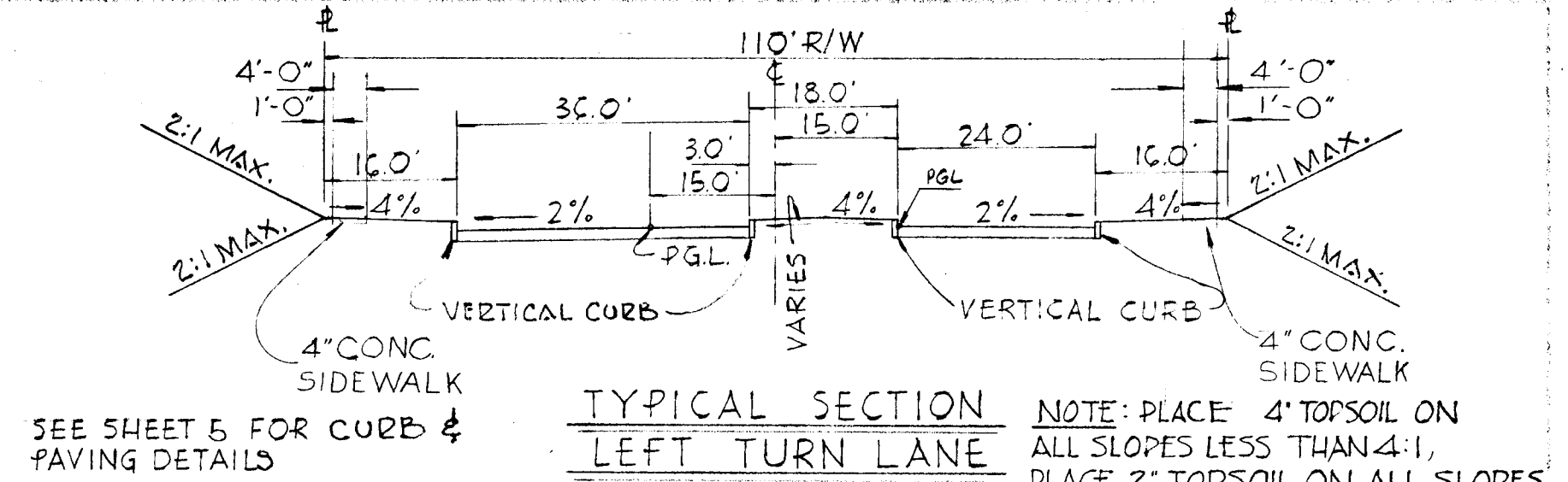
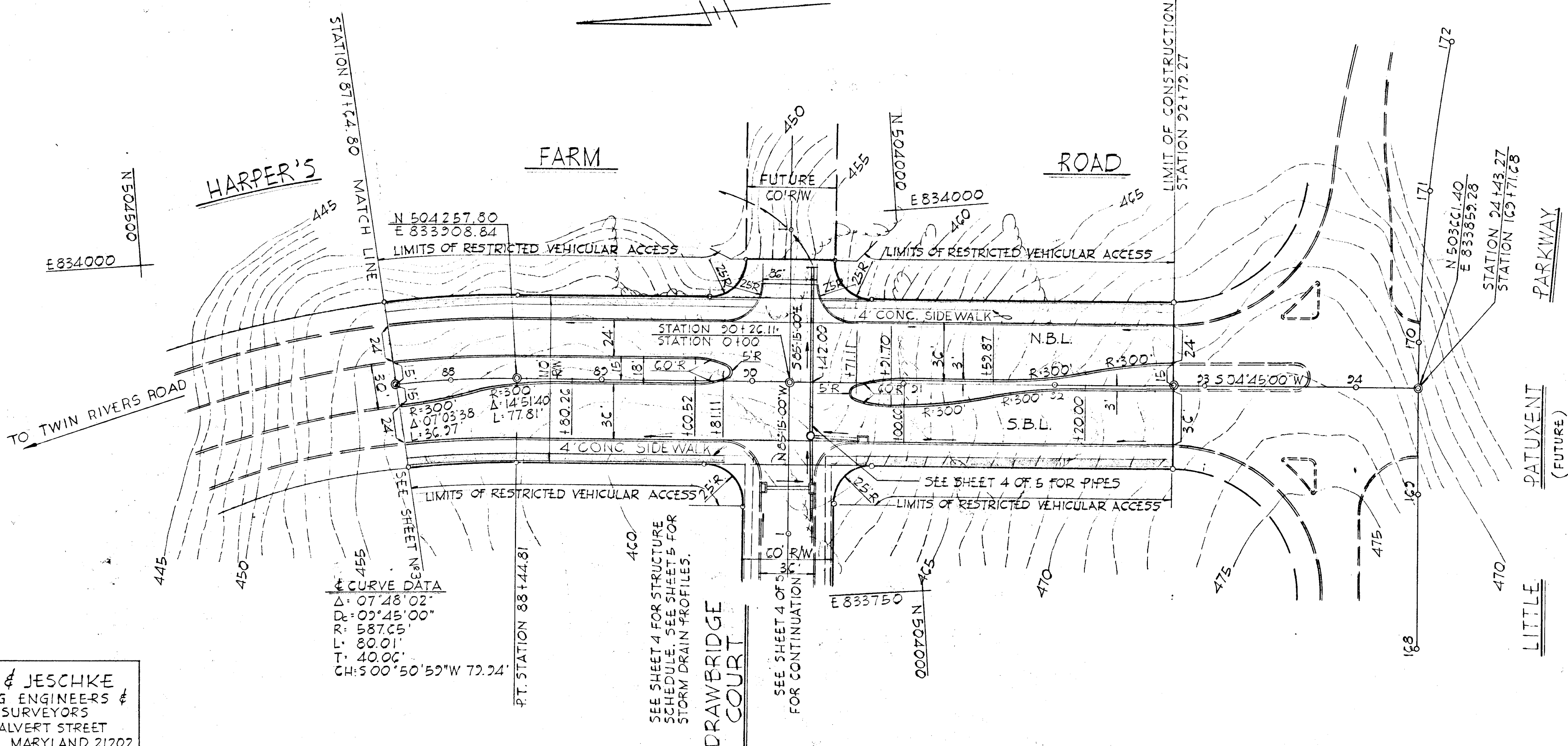
HOWARD COUNTY METROPOLITAN COMMISSION *W. O. Hill 2-7-68*  
CHIEF ENGINEER

HOWARD COUNTY ROADS DEPARTMENT *Herbert S. Schell 1-23-68*  
ROADS SUPERINTENDENT

**PURDUM & JESCHKE**  
 CONSULTING ENGINEERS  
 & LAND SURVEYORS  
 1023 N. CALVERT STREET  
 BALTIMORE, MARYLAND 21202

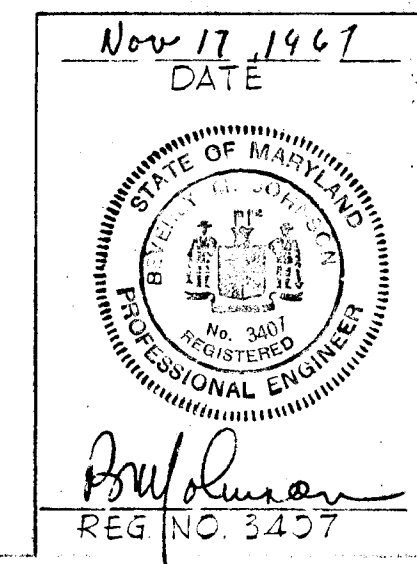
File - F-67-70

VEHICULAR INGRESS & EGRESS IS RESTRICTED EXCEPT AT POINTS OF ACCESS APPROVED BY THE HCPC (HOWARD COUNTY PLANNING COMMISSION)

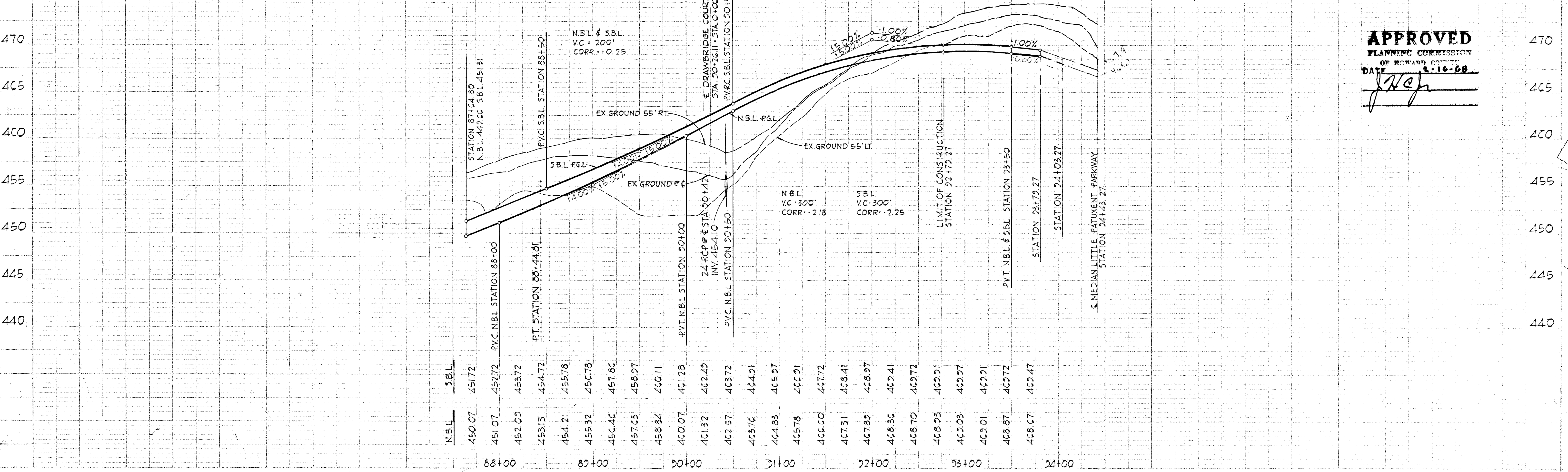


HARPER'S FARM ROAD  
48' DIVIDED ROAD SECTION

PURDUM & JESCHKE  
CONSULTING ENGINEERS &  
LAND SURVEYORS  
1023 N. CALVERT STREET  
BALTIMORE MARYLAND 21202

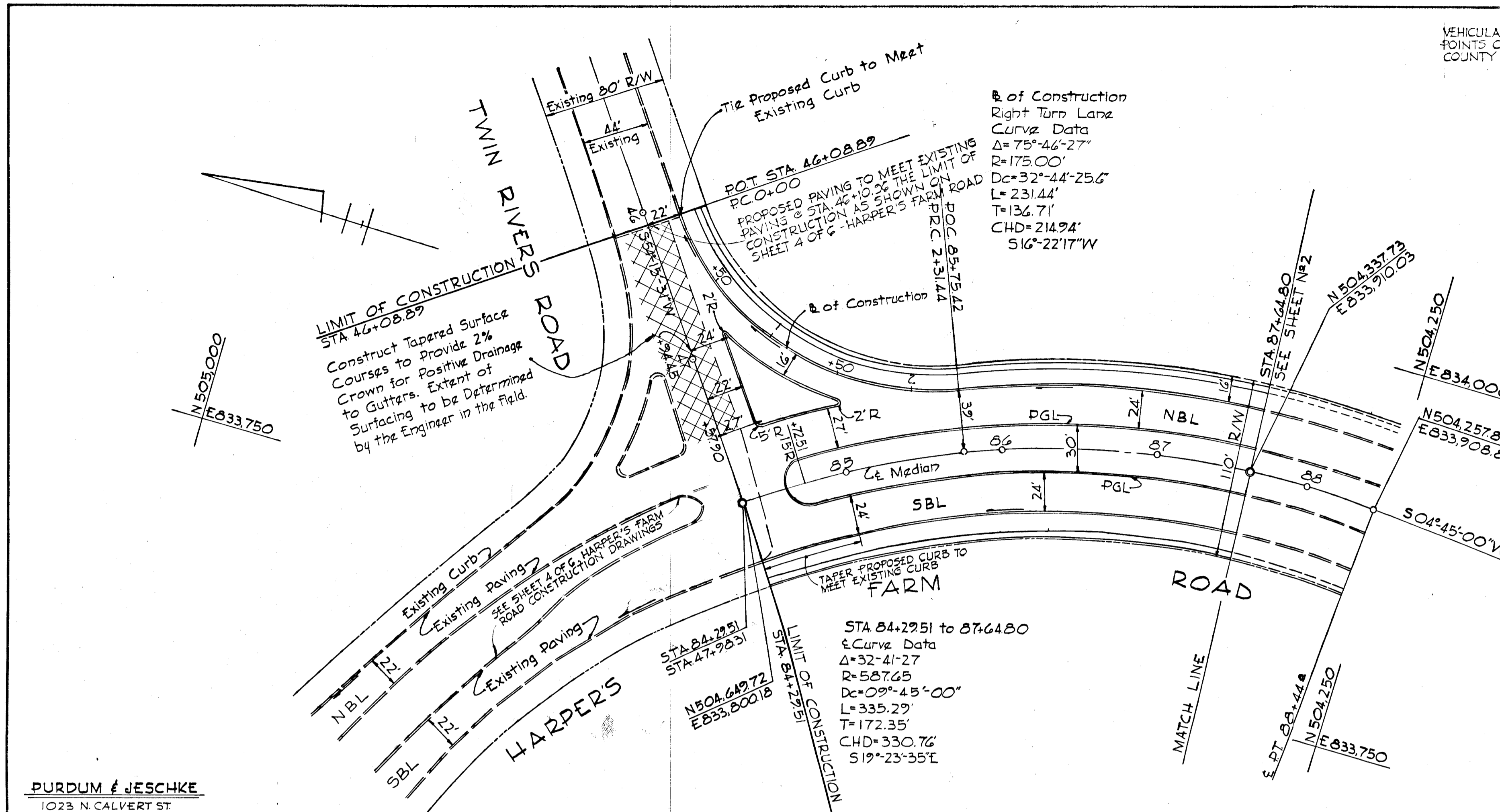


Nov 17, 1967 DATE	REVISIONS	<b>COLUMBIA</b> HOWARD RESEARCH AND DEVELOPMENT CORPORATION ROAD PLAN <b>HARPER'S FARM ROAD</b> FIFTH ELECTION DISTRICT VILLAGE OF HARPER'S CHOICE - SECTION 3 AREA 1
DES.: E.L.B.	SCALE:	
DRN.: DWB	PLAN: 1" = 50'	
CHK.: B.M.J.	PROF: 1" = 50'	
	VERT: 1" = 5'	

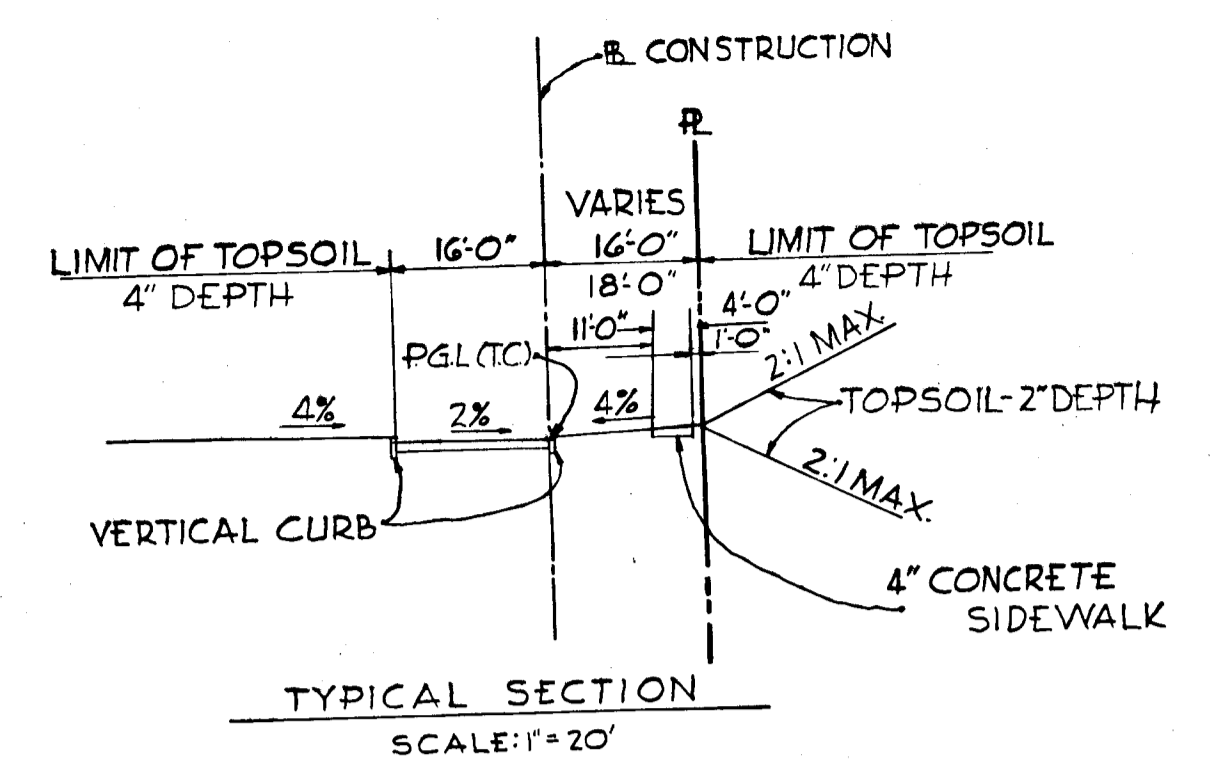


**APPROVED**  
 PLANNING COMMISSION  
 OF HOWARD COUNTY  
 DATE: 3-16-68  
*[Signature]*

DATE	
BY	
SURVEYED	
PLANNED	
NOTED	
ALIGNED	
CHECKED	
RT OF WAY	
CHECKED	
NO.	



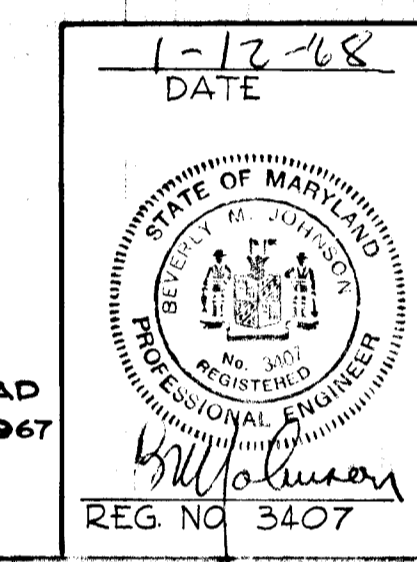
VEHICULAR INGRESS / EGRESS IS RESTRICTED EXCEPT AT POINTS OF ACCESS APPROVED BY THE HCPC (HOWARD COUNTY PLANNING COMMISSION)



**APPROVED**  
PLANNING COMMISSION  
OF HOWARD COUNTY  
DATE: 2-16-68  
*J.H.C.*

**PURDUM & JESCHKE**  
1023 N. CALVERT ST  
BALTIMORE, MARYLAND 21202

NOTE:  
THIS PLAN SUPERSEDES HARPERS FARM ROAD  
PLAN SHEET 5 OF 6, APPROVED OCTOBER 11, 1967  
BY H.C.P.C.



DATE	REVISIONS
1-12-68	

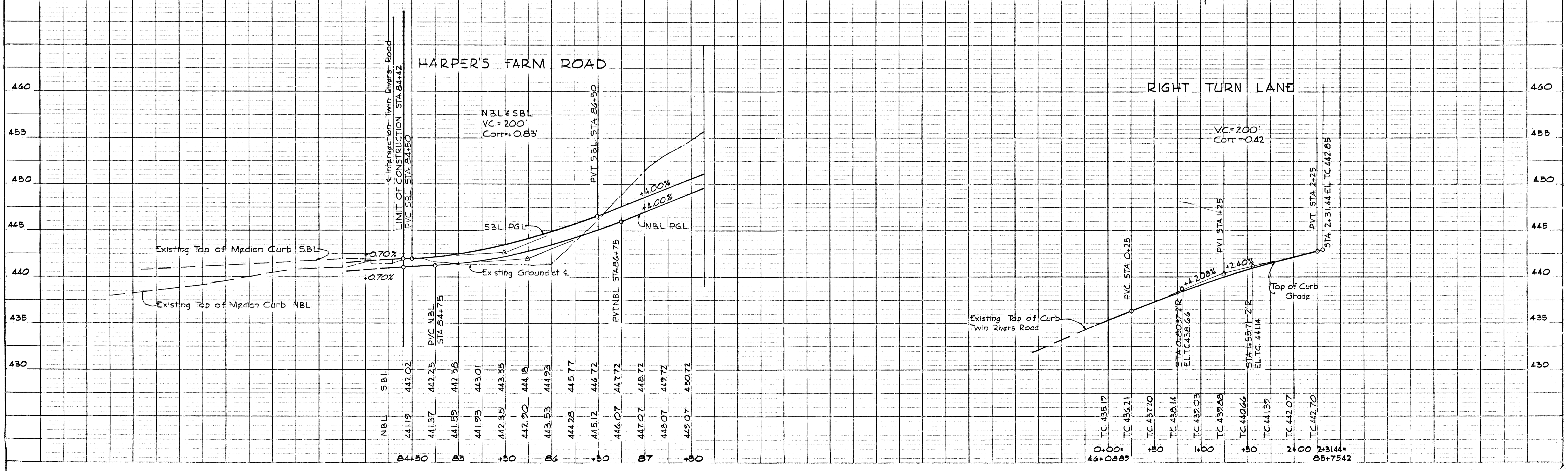
**COLUMBIA**  
THE ROUSE COMPANY

ROAD PLAN FOR  
HARPERS FARM ROAD  
FIFTH ELECTION DISTRICT  
VILLAGE OF HARPER'S CHOICE SECTION 3 AREA 1

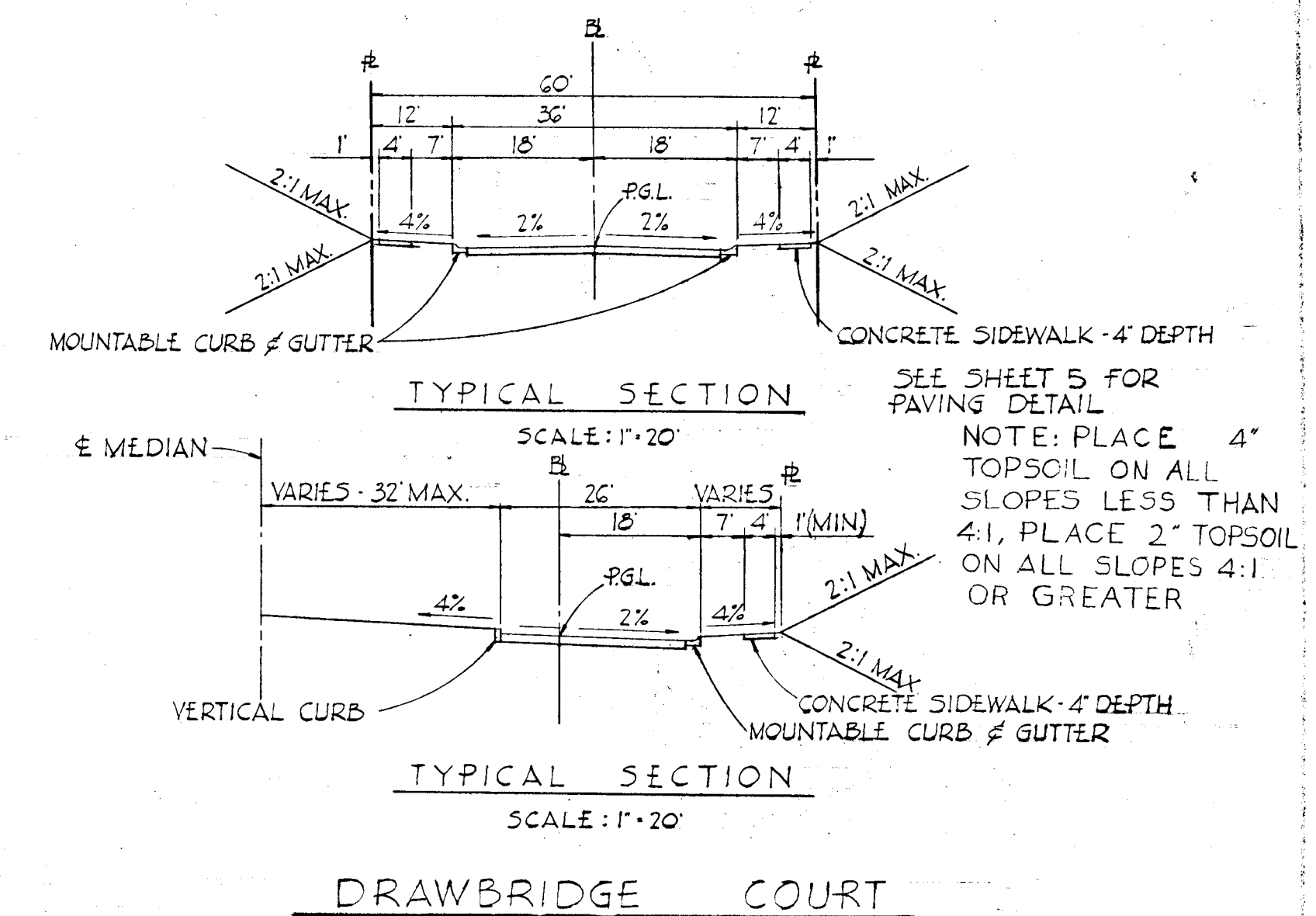
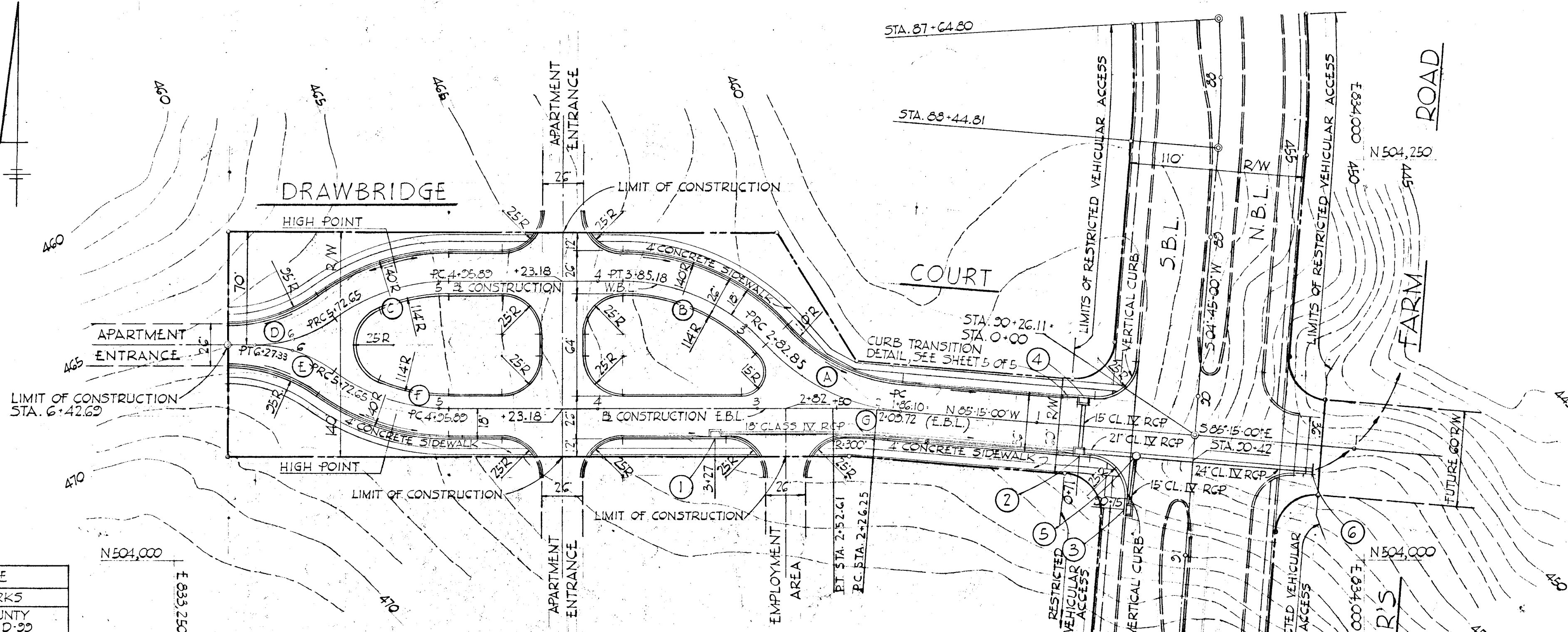
DES: E.L.B. PLAN: 1" = 50'  
DRAWN: J.P.B. HORZ: 1" = 50'  
CHK: APPROVED: VERT: 1" = 5'

DRWG NO 3 OF 5  
C.C.F. NO

DATE	
BY	
SURVEYED	
PLANNED	
NOTED	
GRADES	
CHECKED	
STRUCTURE	
NOTATIONS	
CHECKED	
NO.	



VEHICULAR INGRESS & EGRESS IS RESTRICTED EXCEPT AT POINTS OF ACCESS APPROVED BY THE HCPC (HOWARD COUNTY PLANNING COMMISSION)



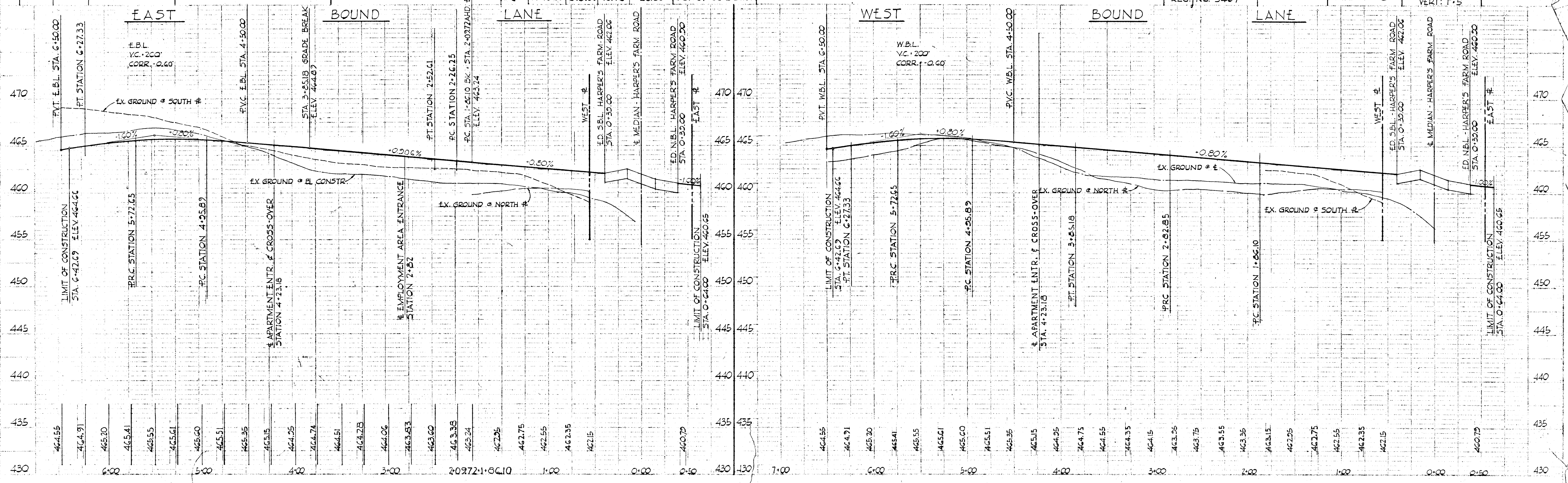
NO.	TYPE	TOP ELEV.	REMARKS
1	5' COMB.	464.61	HOWARD COUNTY STD. INLET D-33
2	5' COMB.	462.64	HOWARD COUNTY STD. INLET D-33
3	5' COMB.	465.10	HOWARD COUNTY STD. INLET D-33
4	5' COMB.	462.64	HOWARD COUNTY STD. INLET D-33
5	STD. MANHOLE	462.30	HOWARD COUNTY STD. MANHOLE D-103
6	STD. END SUPP. WALL	455.71	HOWARD COUNTY STD. END SUPPORT W. D-46

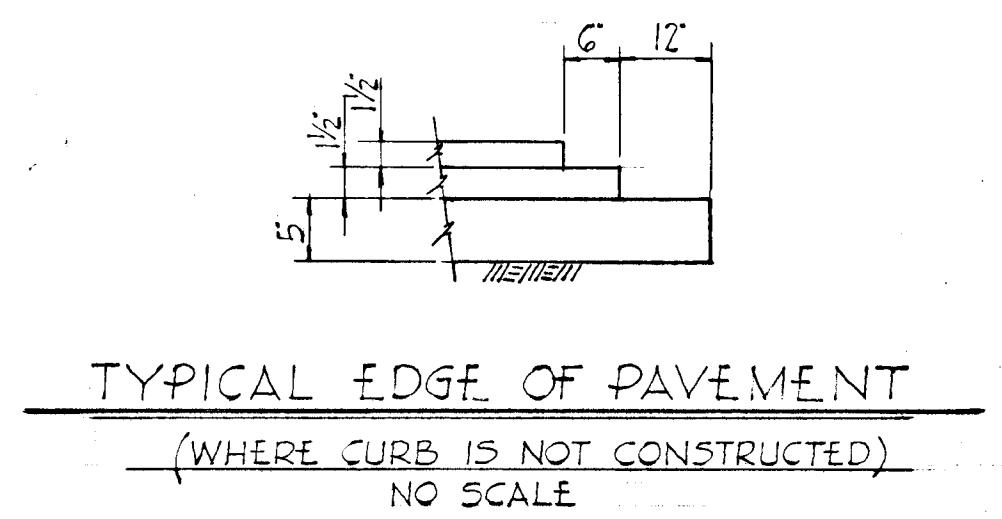
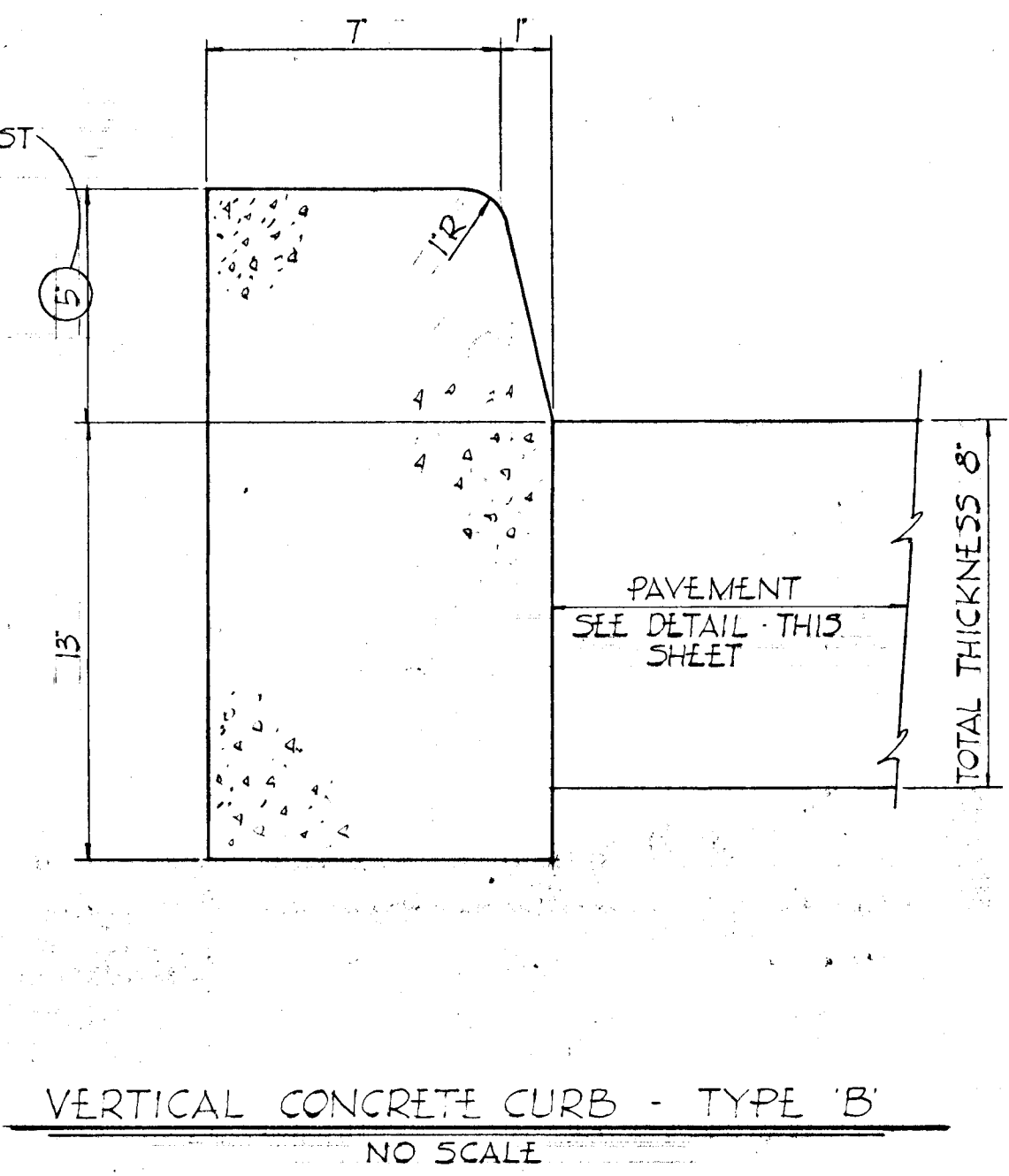
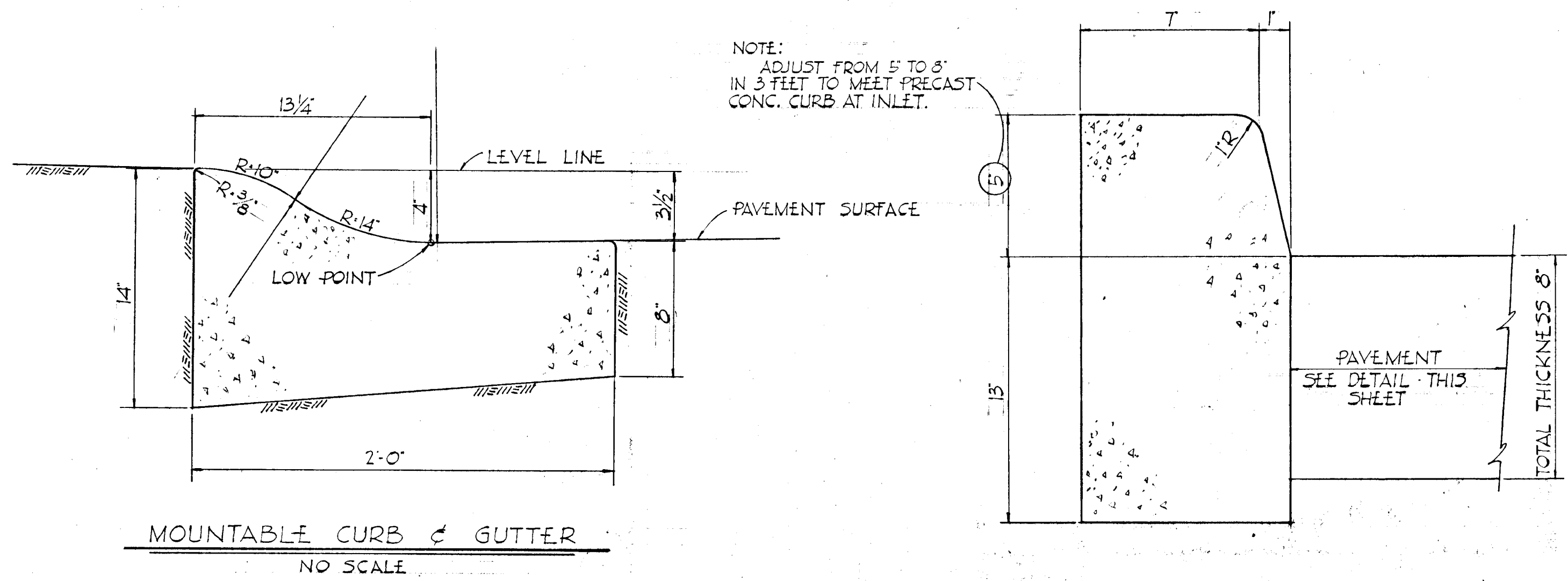
PURDUM & JESCHKE  
CONSULTING ENGINEERS &  
LAND SURVEYORS  
1023 N. CALVERT STREET  
BALTIMORE, MARYLAND 21202

CURVE	Δ	R	T	L	CHD. BRG. & DIST.
A	43°18'26"	128.00	50.67	96.75	N63°35'47"W 74.46'
B	48°03'20"	122.00	54.37	102.33	N65°58'17"W 99.36'
C	36°02'55"	122.00	39.70	76.76	S71°58'32"W 75.50'
D	36°02'55"	86.91	28.28	54.68	S71°58'32"E 53.78'
E	36°02'55"	86.91	28.28	54.68	S71°58'32"E 53.78'
F	36°02'55"	122.00	39.70	76.76	S71°58'32"E 53.78'
G	04°45'00"	318.00	13.18	26.36	S87°37'30"E 26.36'

**APPROVED**  
PLANNING COMMISSION  
OF HOWARD COUNTY  
DATE: 2-16-68

Nov 17, 1967 DATE	REVISIONS	<b>COLUMBIA</b> HOWARD RESEARCH AND DEVELOPMENT CORPORATION ROAD PLAN <b>DRAWBRIDGE COURT</b> FIFTH ELECTION DISTRICT VILLAGE OF HARPER'S CHOICE - SECTION 3 AREA
	DES: B.M.J. DRN: 'D.E.H.' CHK: B.M.J.	
SCALE: PLAN: 1"=50' PROFILE: 1"=50' VERT: 1"=5'		DRWG NO. 4 OF 9 C.C.F. NO.

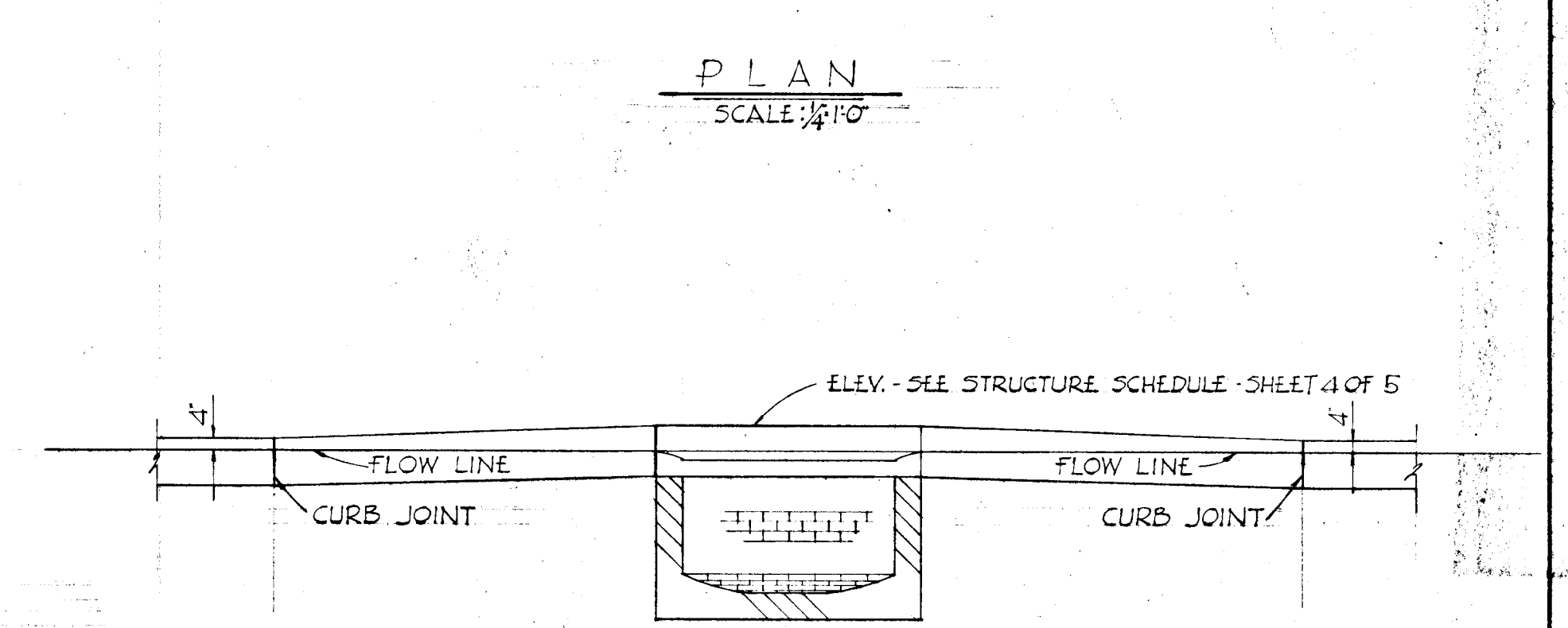
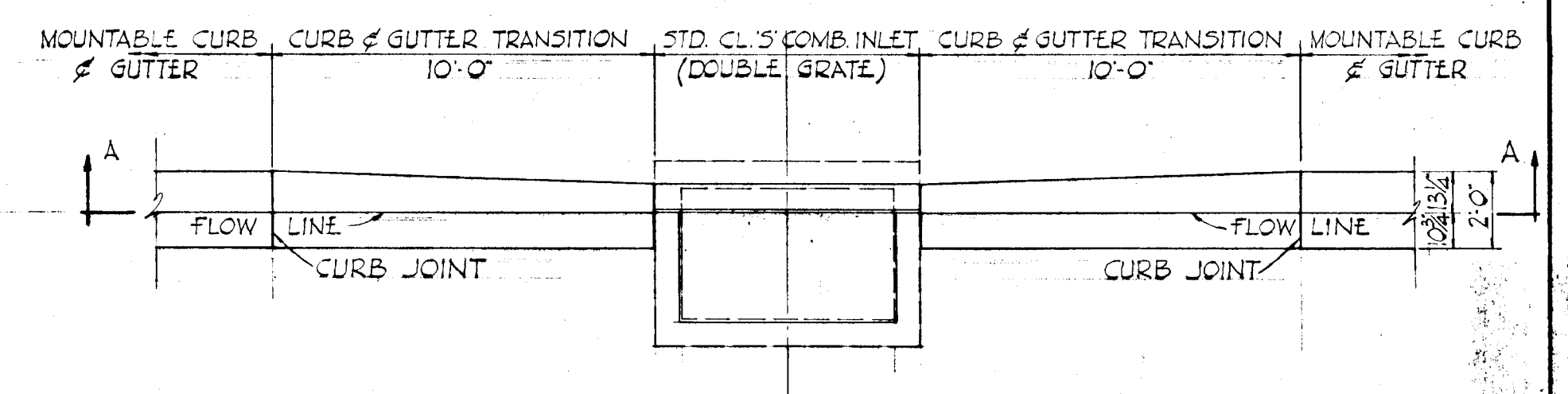




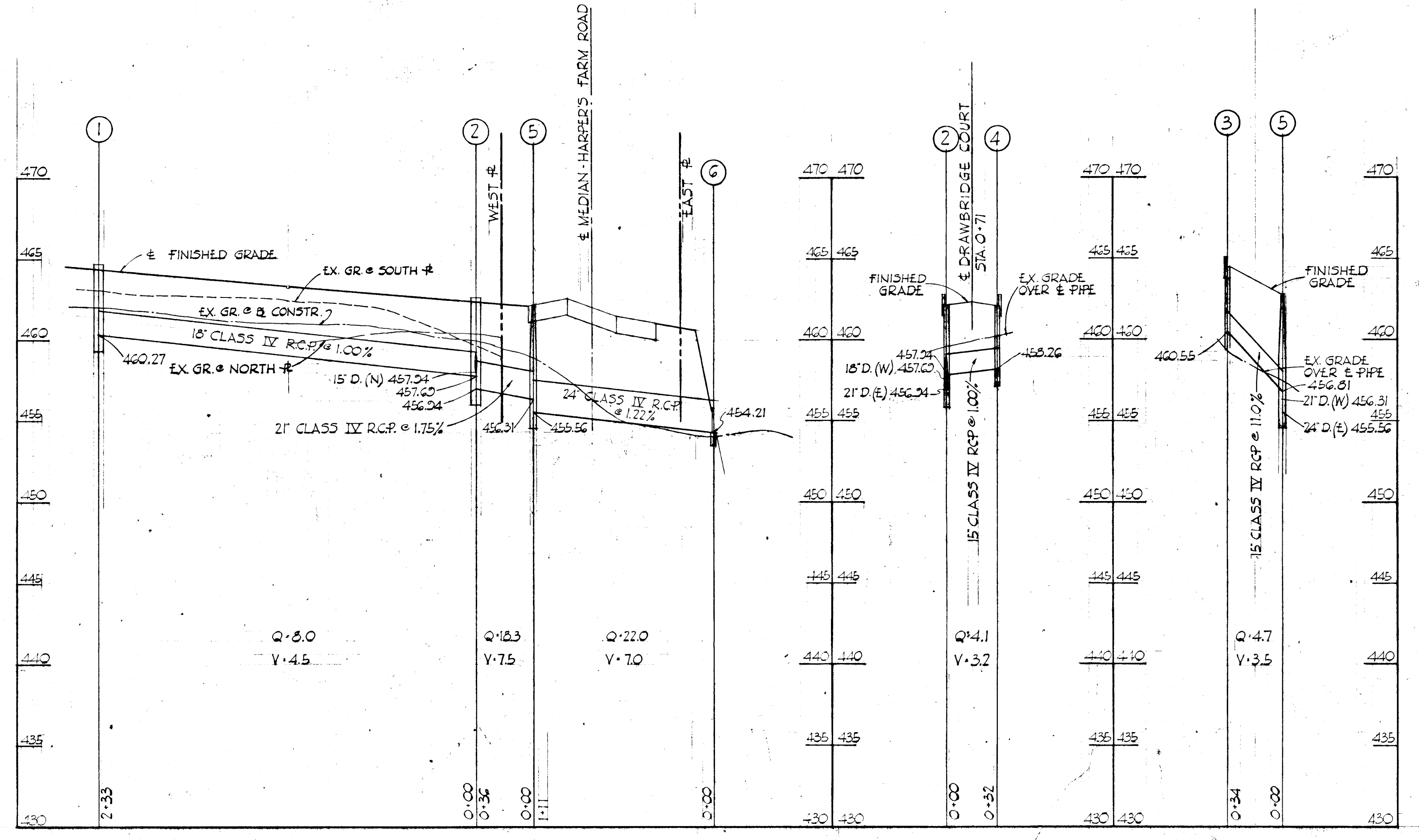
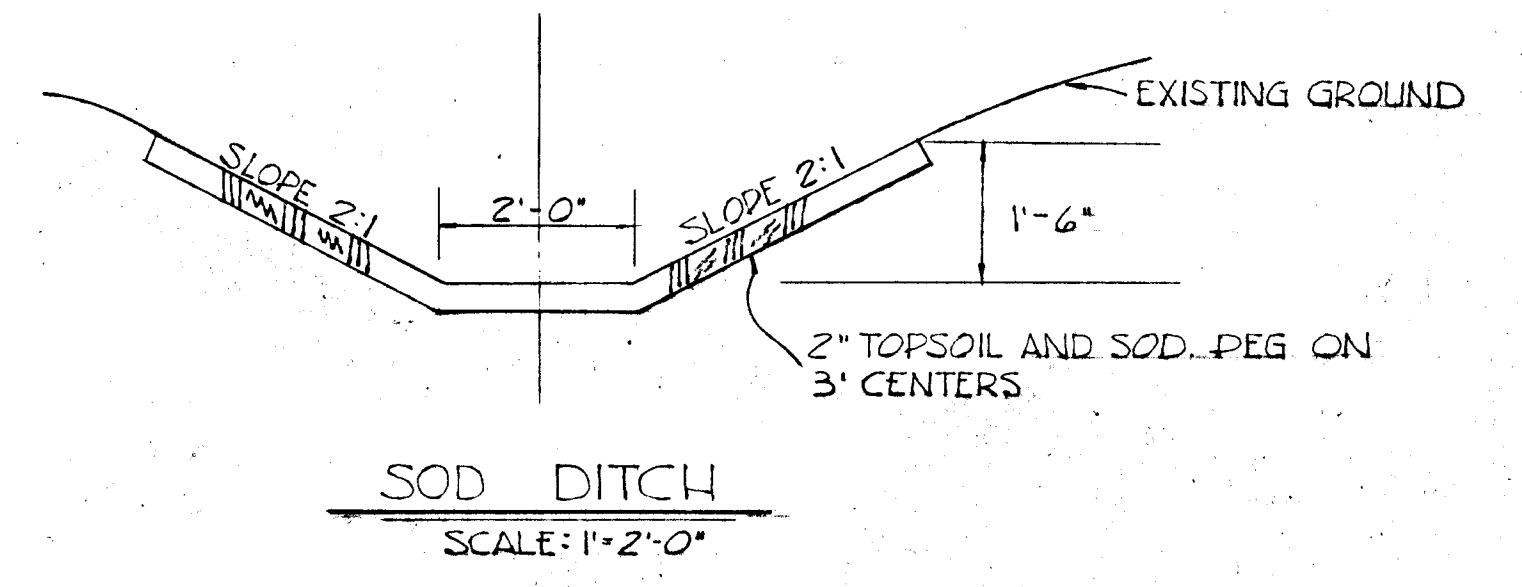
BITUMINOUS CONCRETE SURFACE COURSE	1 1/2"	BAND C-3	FINAL PHASE
BITUMINOUS CONCRETE BINDER COURSE	1 1/2"	BAND A-3	FINAL PHASE
BITUMINOUS CONCRETE BASE COURSE - PLACE IN ONE COURSE	5"	BAND G-2 OR G-3	FIRST PHASE
CLEARING & GRADING		ARTICLE C-1	
SUBGRADE		ARTICLE C-2	
BASE COURSE		ARTICLE C-31 OR C-33	
BINDER COURSE		ARTICLE C-31	
SURFACE COURSE		ARTICLE C-31	

TO BE CONSTRUCTED IN ACCORDANCE WITH THE HOWARD COUNTY ROAD CONSTRUCTION CODE AND SPECIFICATIONS.

PRIMARY RESIDENTIAL STREET  
NO SCALE



CURB & GUTTER TRANSITION



**APPROVED**  
PLANNING COMMISSION  
OF HOWARD COUNTY  
DATE: 2-16-68  
*J. J. [Signature]*

PURDUM & JESCHKE  
CONSULTING ENGINEERS &  
LAND SURVEYORS  
1023 N. CALVERT STREET  
BALTIMORE, MARYLAND 21202

	DATE: Nov 17, 1967	REVISIONS	<b>COLUMBIA</b> HOWARD RESEARCH AND DEVELOPMENT CORPORATION STORM DRAIN PROFILES & MISCELLANEOUS DETAILS FIFTH ELECTION DISTRICT VILLAGE OF HARPER'S CHOICE - SECTION 3 AREA 1 DES: B.M.J. SCALE: AS NOTED DRN: "D.E.H." C.C.F. NO. CHK: B.M.J.