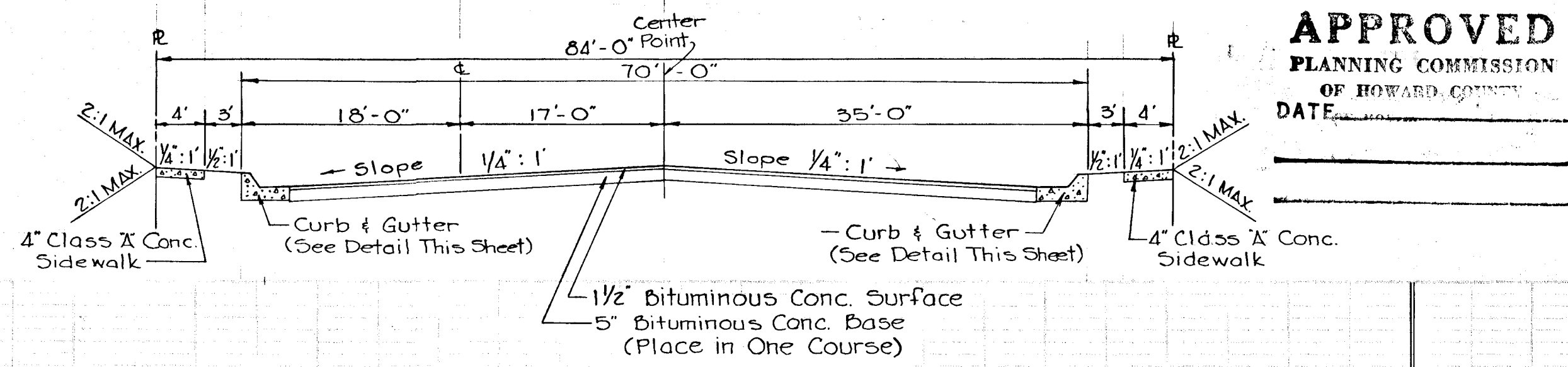
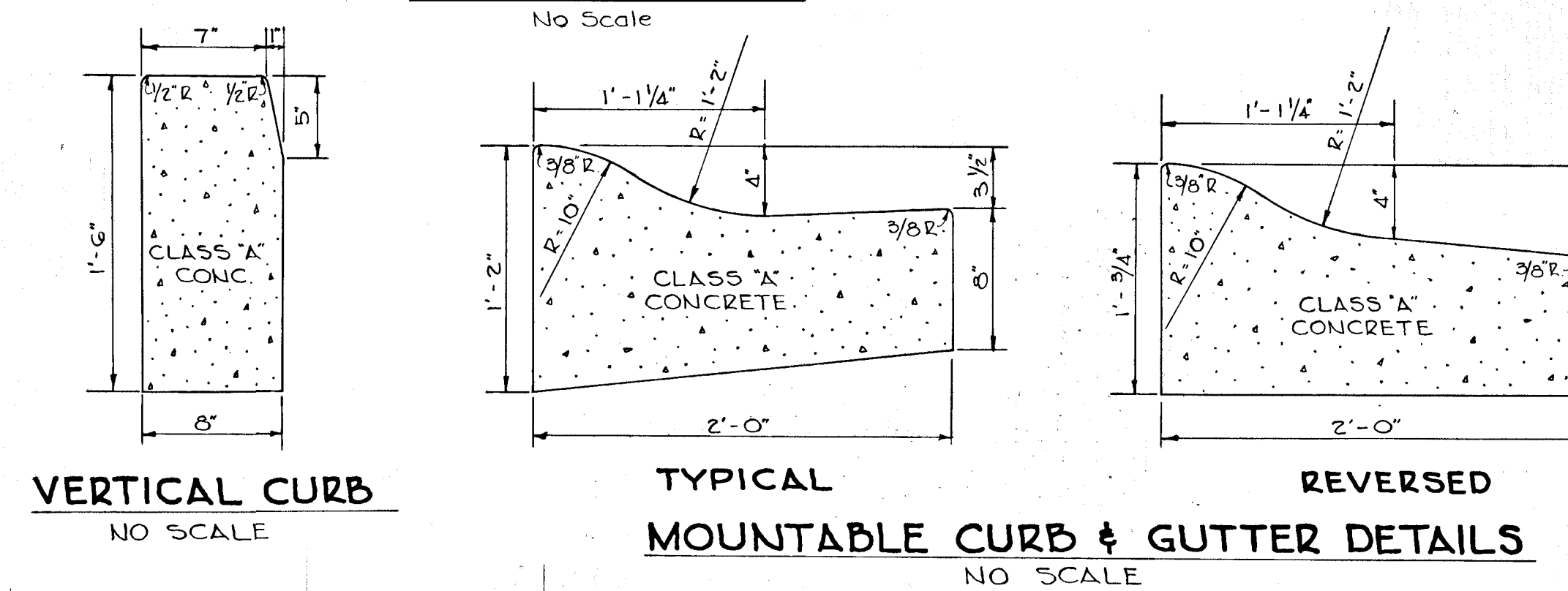
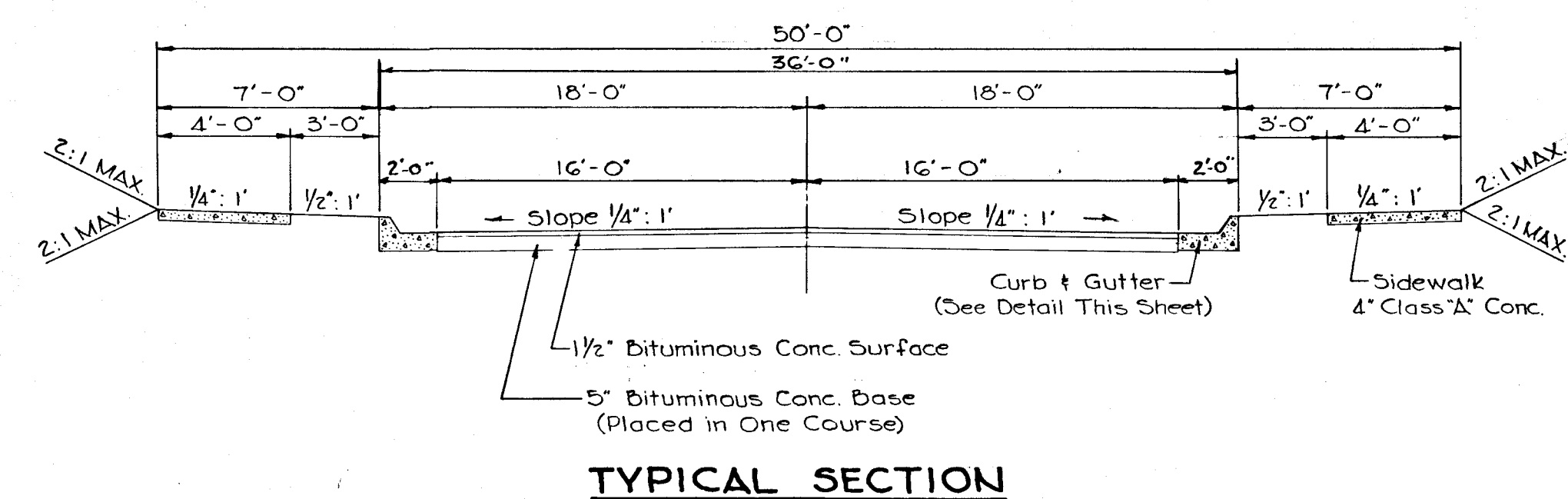
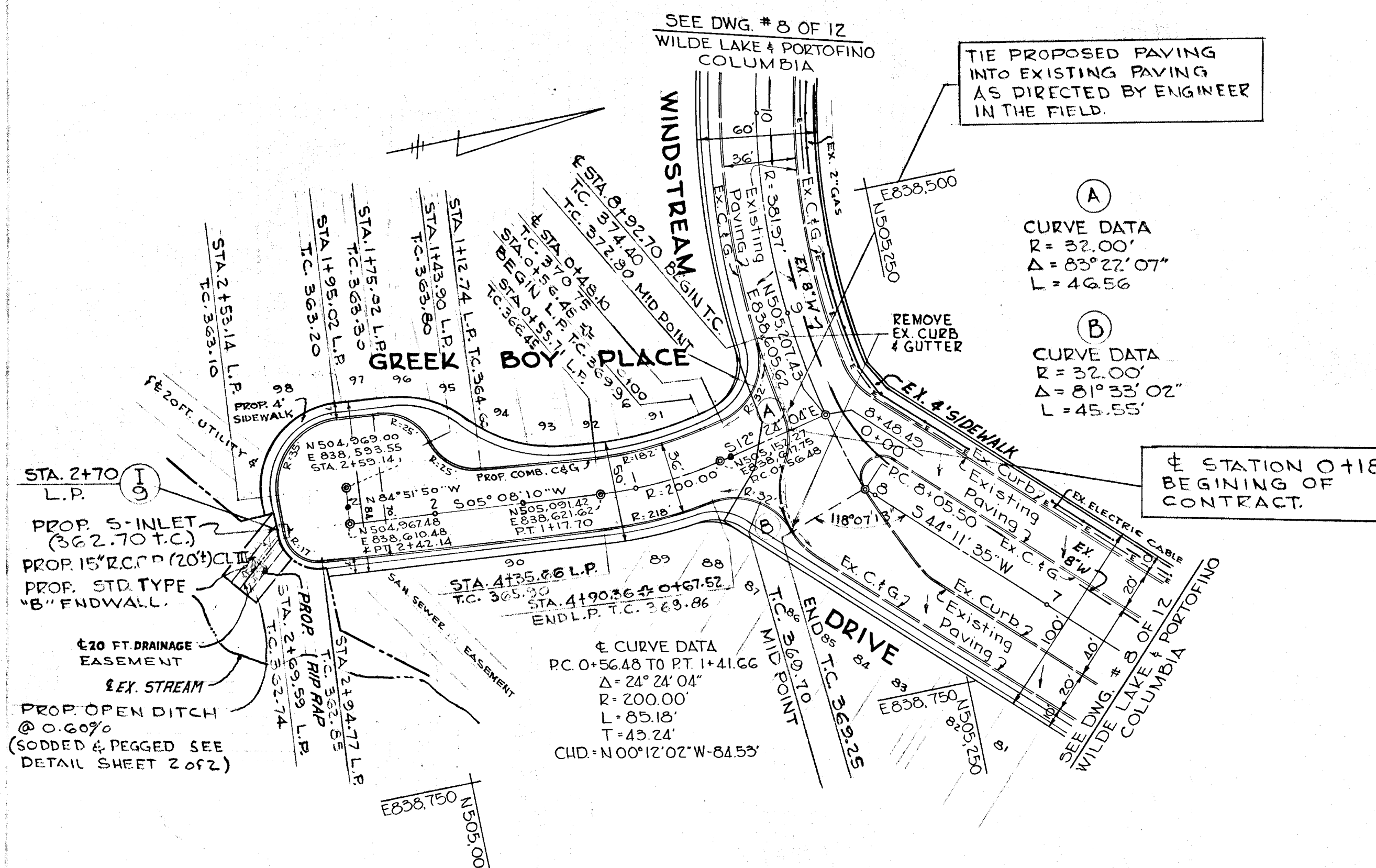
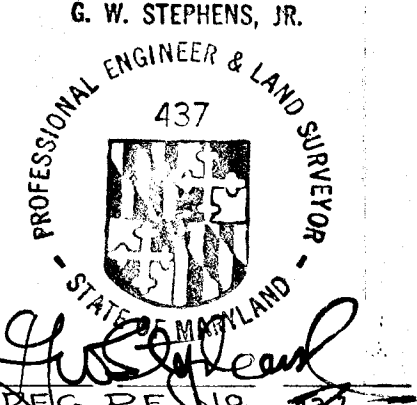


GENERAL NOTES

1. FOR ROADWAY SECTION OF GREEK BOY PLACE, SEE DETAIL THIS SHEET.
2. FOR DETAIL OF MOUNTABLE CONCRETE CURB & GUTTER AND VERTICAL CURB, SEE DETAILS THIS SHEET.
3. FOR DETAILS OF AN S-INLET AND STD. END SUPPORT WALL, SEE THE FOLLOWING DRAWINGS IN THE HOWARD COUNTY ROAD CONSTRUCTION CODE AND STD. SPECIFICATIONS:
D-28 PAGE 153 S-INLET
D-48 PAGE 103 STD. TYPE "B" ENDWALL
4. FOR FULL SECTION GREEK BOY PLACE CUL-DE-SAC SEE DETAIL THIS SHEET.
5. FOR DETAIL OF OPEN DITCH SEE SHEET 2 OF 2.

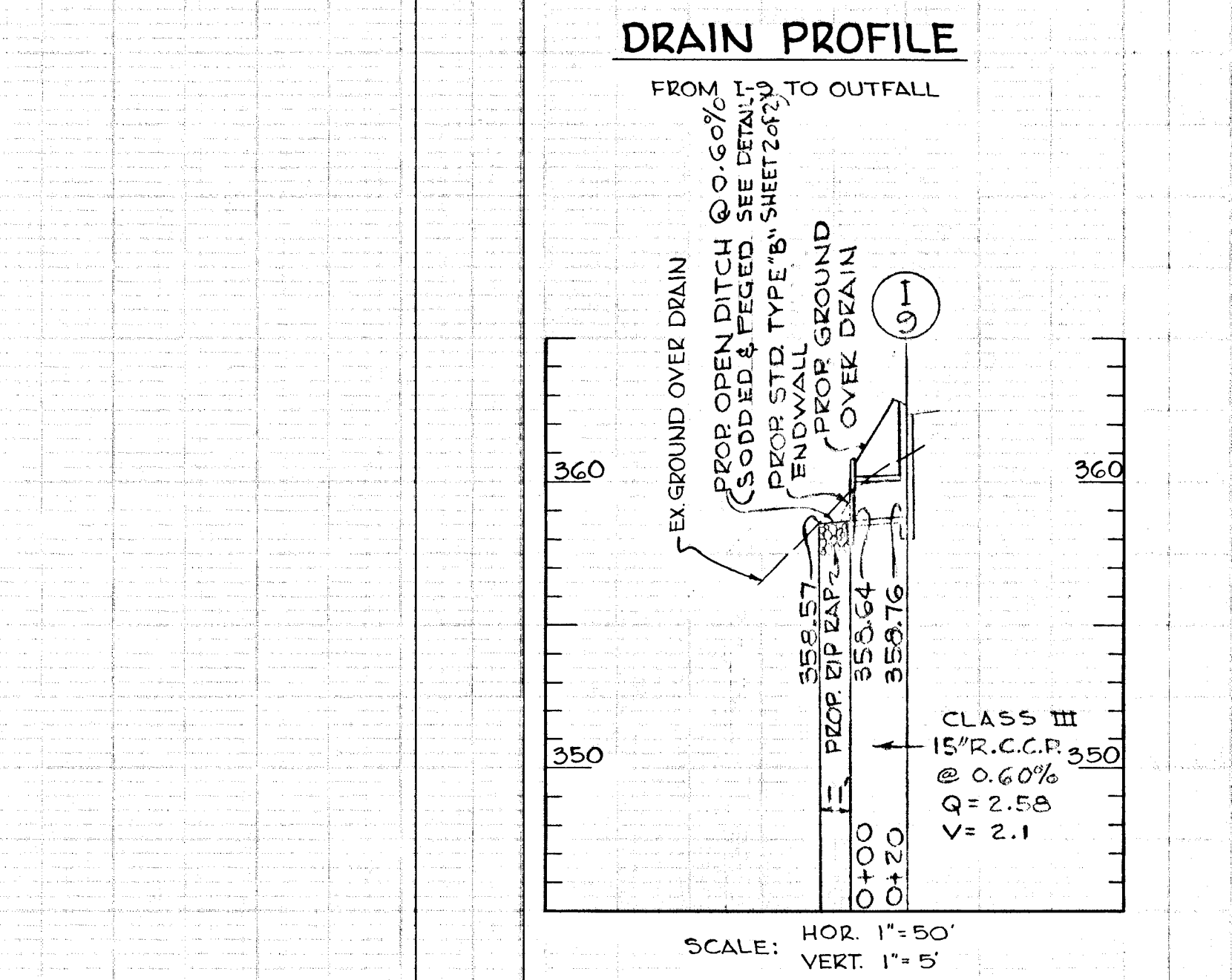
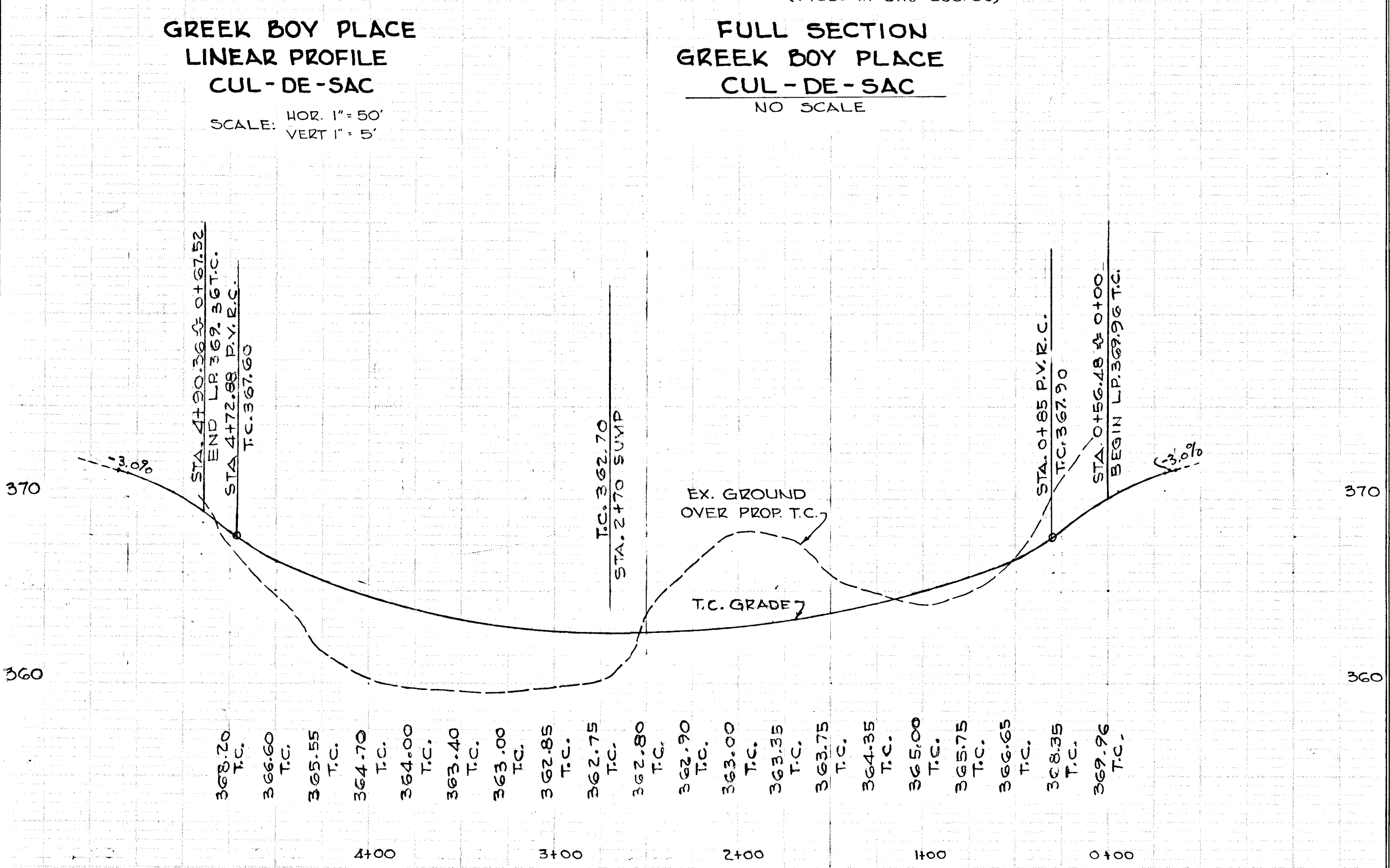
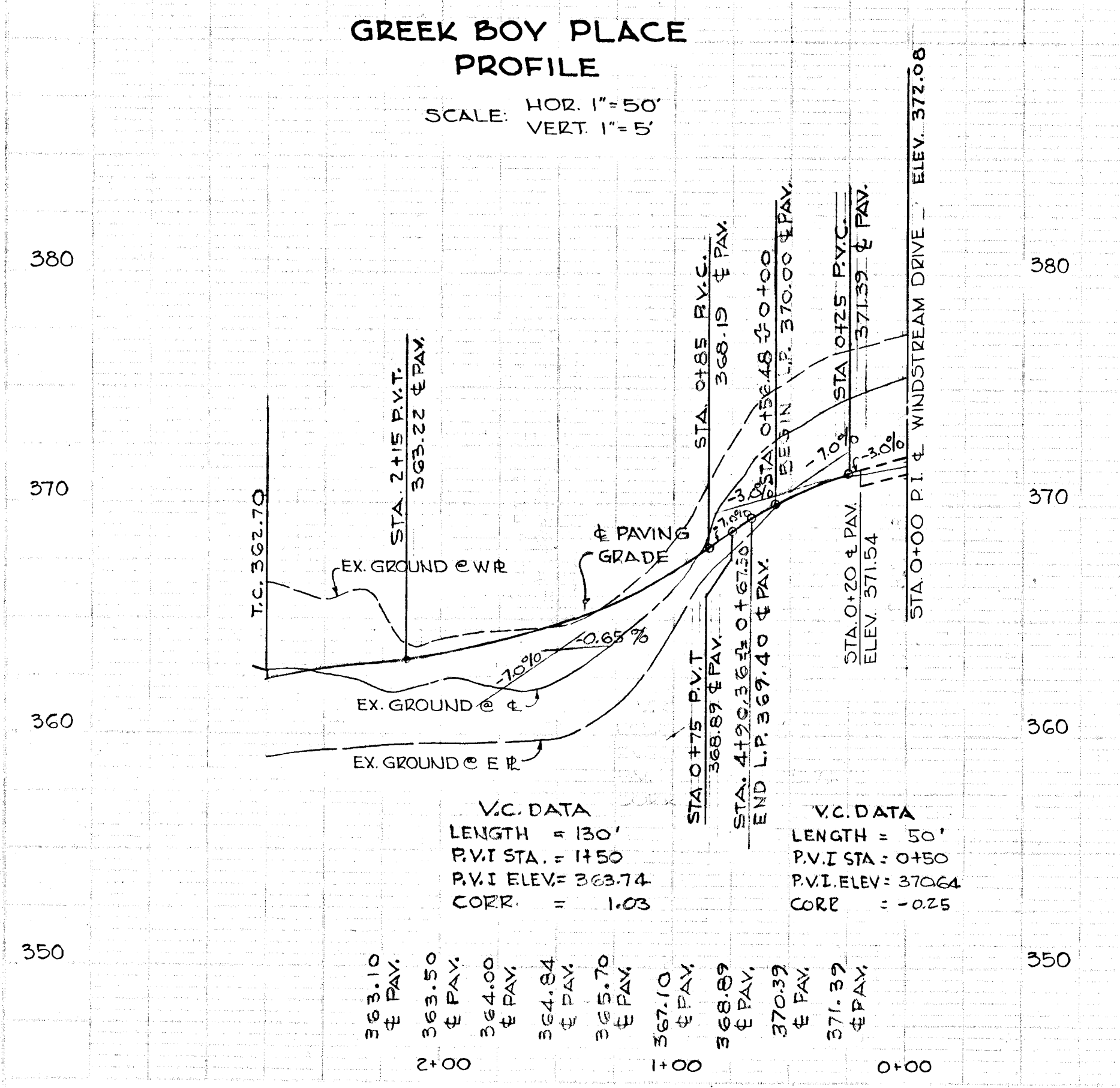
GENERAL REVISIONS		APP'D:	DATE
GENERAL REVISIONS	12-29-67	G.J.J.	10-10-67
OWNER & DEVELOPER		ENGINEER	
HOWARD RESEARCH & DEVELOPMENT CORP. THE VILLAGE OF CROSS KEYS BALTIMORE, MARYLAND		GEORGE WM. STEPHENS JR. & ASSOC 303 ALLEGHENY AVE. TOWSON, MARYLAND	
APPROVED: HOWARD CO. PLANNING COMM.		APPROVED: HOWARD CO. ROADS DEPT.	
APPROVED: HOWARD CO. MET. COMM.		APPROVED: HOWARD CO. MET. COMM.	
DATE: 1-11-68		DATE: 1-10-68	
DATE: 1-10-68		DATE: 1-10-68	



PLAN & PROFILE
GREEK BOY PLACE
VILLAGE OF WILDE LAKE SUBDIVISION
SECTION SIX AREA FOUR
COLUMBIA

HOWARD CO., MARYLAND
SCALE: AS SHOWN

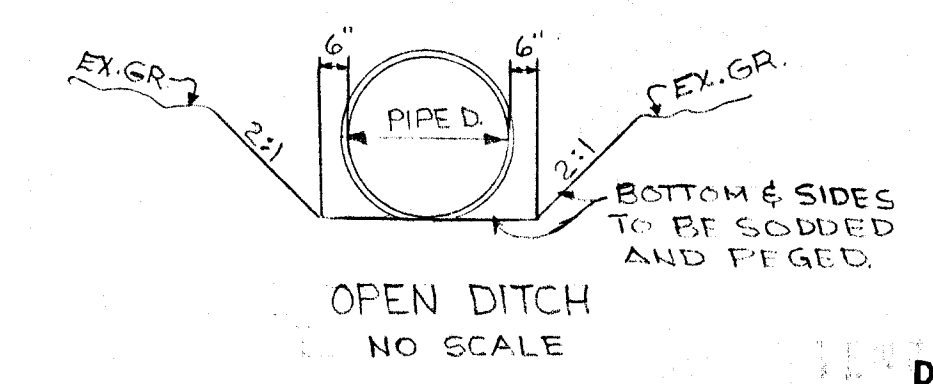
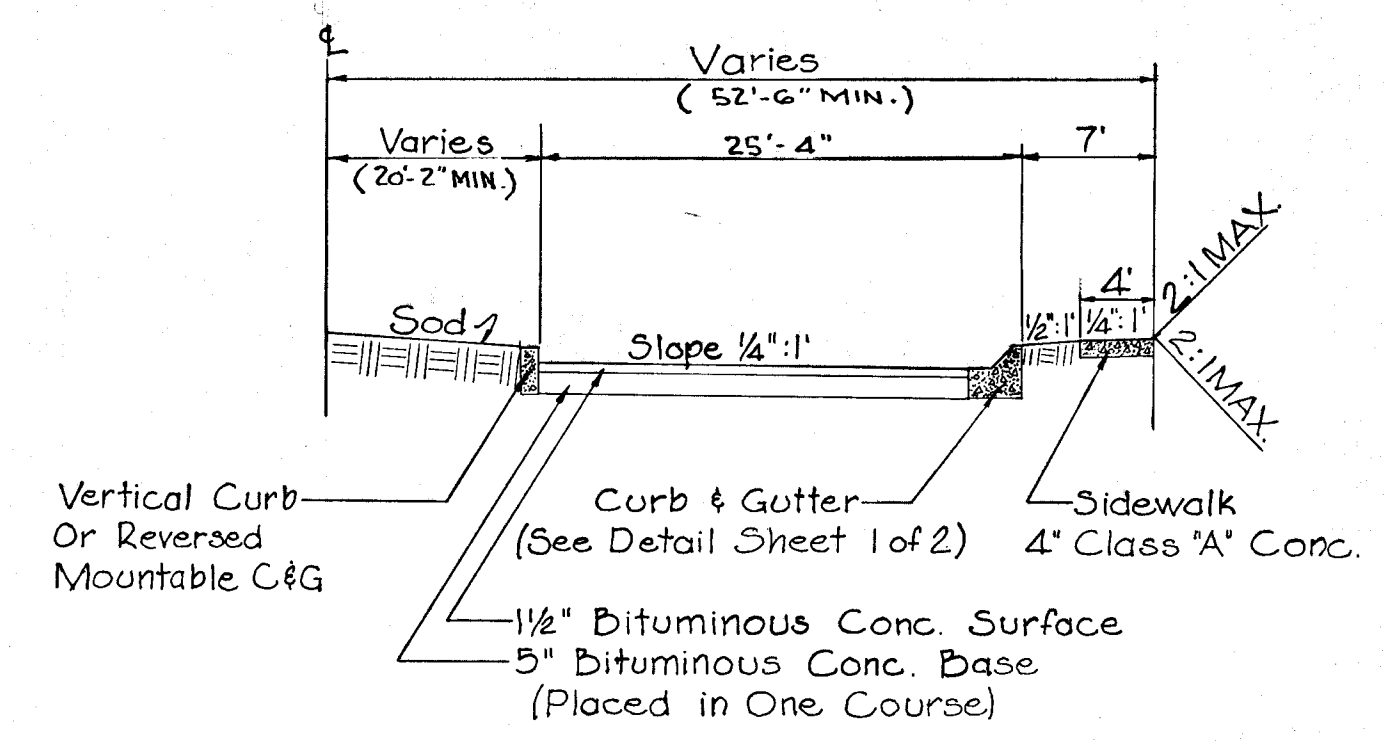
ELECTION DIST # 5
AUGUST 4, 1967



GENERAL NOTES

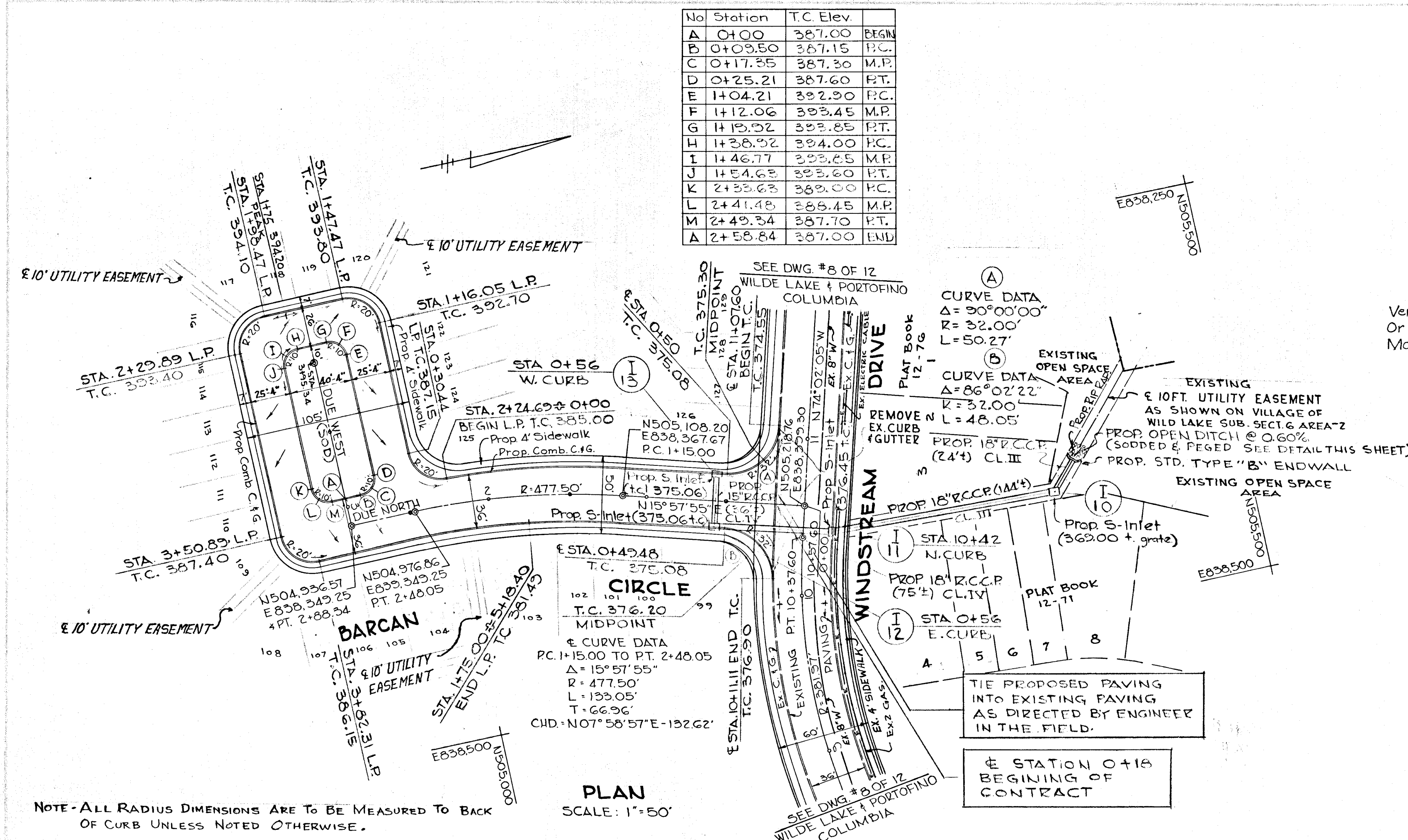
- FOR ROADWAY SECTION OF BARCAN CIRCLE SEE DETAIL SHEET 1 OF 2.
- FOR DETAIL OF MOUNTABLE CONCRETE CURB & GUTTER, & REVERSE CURB & GUTTER, SEE DETAILS SHEET 1 OF 2.
- FOR DETAILS OF AN S-INLET & STD. END SUPPORT WALL, SEE THE FOLLOWING DRAWINGS IN THE HOWARD COUNTY ROAD CONSTRUCTION CODE & STD. SPECIFICATIONS:
D-98 PAGE 153 S-INLET
D-48 PAGE 103 STD. TYPE "B" ENDWALL.
- FOR TYPICAL HALF-SECTION OF CUL-DE-SAC SEE DETAIL THIS SHEET.
- FOR DETAIL OF OPEN DITCH SEE THIS SHEET.

GENERAL REVISIONS		G.J.J.	10-10-67	APPR'D.
GENERAL REVISIONS		P.J.R.	11-13-67	APPR'D.
OWNER & DEVELOPER		ENGINEER		
HOWARD RESEARCH & DEVELOPMENT CORP. THE VILLAGE OF CROSS KEYS BALTIMORE, MARYLAND		GEORGE WM. STEPHENS JR. & ASSOC. 303 ALLEGHENY AVE. TOWSON, MARYLAND		
APPROVED: HOWARD CO. PLANNING COMM.		AUG 15, 1967 DATE		
<i>J.H. Clavorn</i> SENIOR ENGINEER		1-11-68 DATE		
APPROVED: HOWARD CO. ROADS DEPT.		ROAD SUPERINTENDENT		
<i>Denise H. Mendenhall</i> ROAD SUPERINTENDENT		1-10-68 DATE		
APPROVED: HOWARD CO. MET. COMM.		1-10-68 DATE		
<i>W.O. Albert</i> CHIEF ENGINEER		1-10-68 DATE		
		REG. P.E. NO. 4382		



APPROVED
PLANNING COMMISSION
OF HOWARD COUNTY
DATE _____

No	Station	T.C. Elev	BEGR
A	0+00	387.00	BEGN
B	0+09.50	387.15	P.C.
C	0+17.35	387.30	M.P.
D	0+25.21	387.60	P.T.
E	1+04.21	392.90	P.C.
F	1+12.06	393.45	M.P.
G	1+19.92	393.85	P.T.
H	1+38.92	394.00	P.C.
I	1+46.77	393.25	M.P.
J	1+54.63	393.60	P.T.
K	2+33.63	389.00	P.C.
L	2+41.48	388.45	M.P.
M	2+49.34	387.70	P.T.
A	2+58.84	387.00	END



NOTE - ALL RADIUS DIMENSIONS ARE TO BE MEASURED TO BACK OF CURB UNLESS NOTED OTHERWISE.

PLAN & PROFILE
BARCAN CIRCLE
VILLAGE OF WILDE LAKE SUBDIVISION
SECTION SIX AREA FOUR
COLUMBIA
HOWARD CO. MARYLAND ELECTION DIST. # 5
SCALE: AS SHOWN AUGUST 4, 1967

