

Oct. 2 1967
 Date
 J. H. Clawson, Senior Engineer
 Date: 1-23-68
 APPROVED: HOWARD COUNTY ROADS DEPT.
 Date: 1-23-68
 Approved: M. Wehrend, Road Superintendent
 Date: 1-23-68
 APPROVED: HOWARD COUNTY METROPOLITAN COM.
 Date: 1-22-68
 W. C. Salbut, Chief Engineer
 Date: 1-22-68

PURDUM & WESCHKE
 ENGINEERS & LAND SURVEYORS
 24 PARK AVENUE
 ELLICOTT CITY, MARYLAND

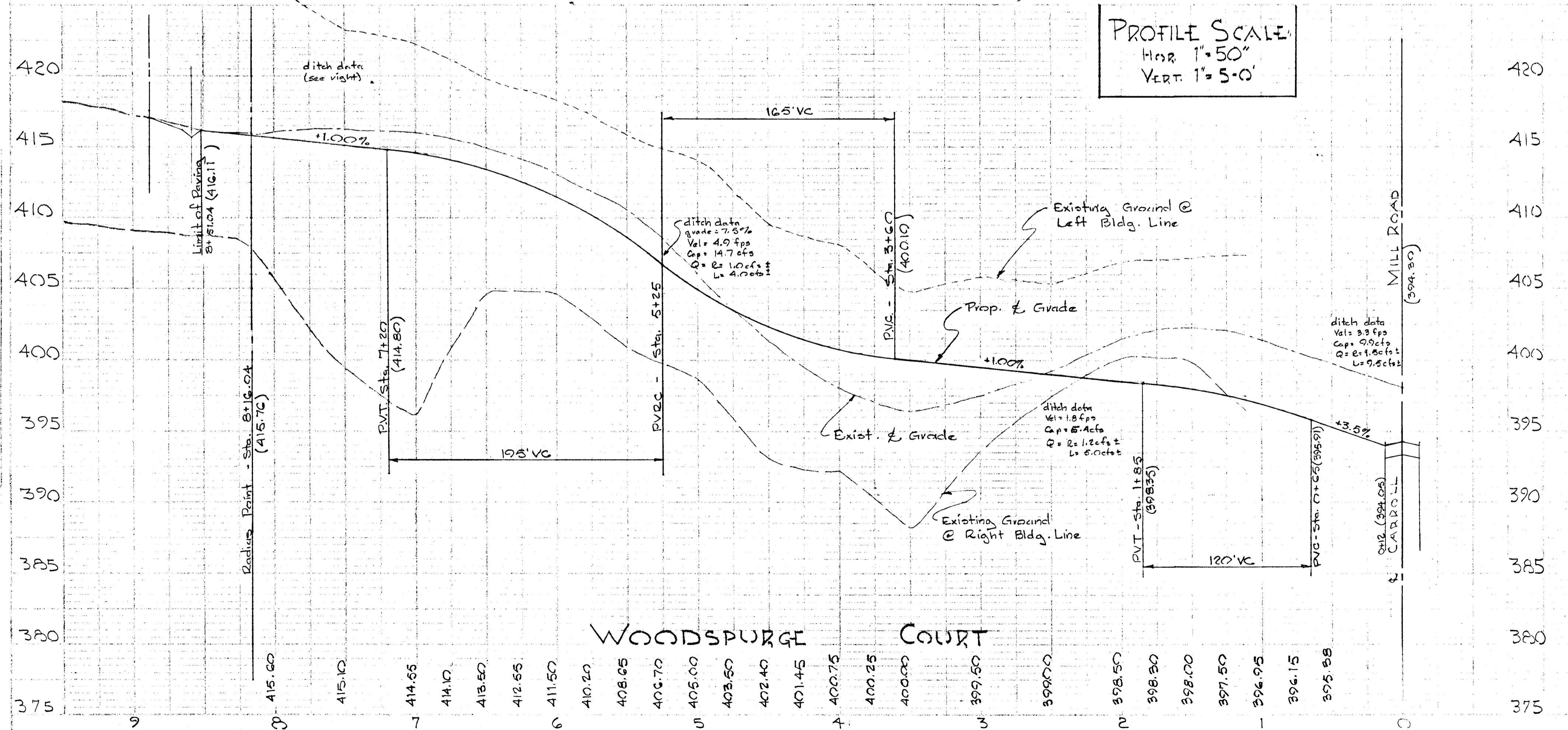
PLAN & PROFILE - WOODSPURGE COURT
 SECTION N^o 2

Woodmark

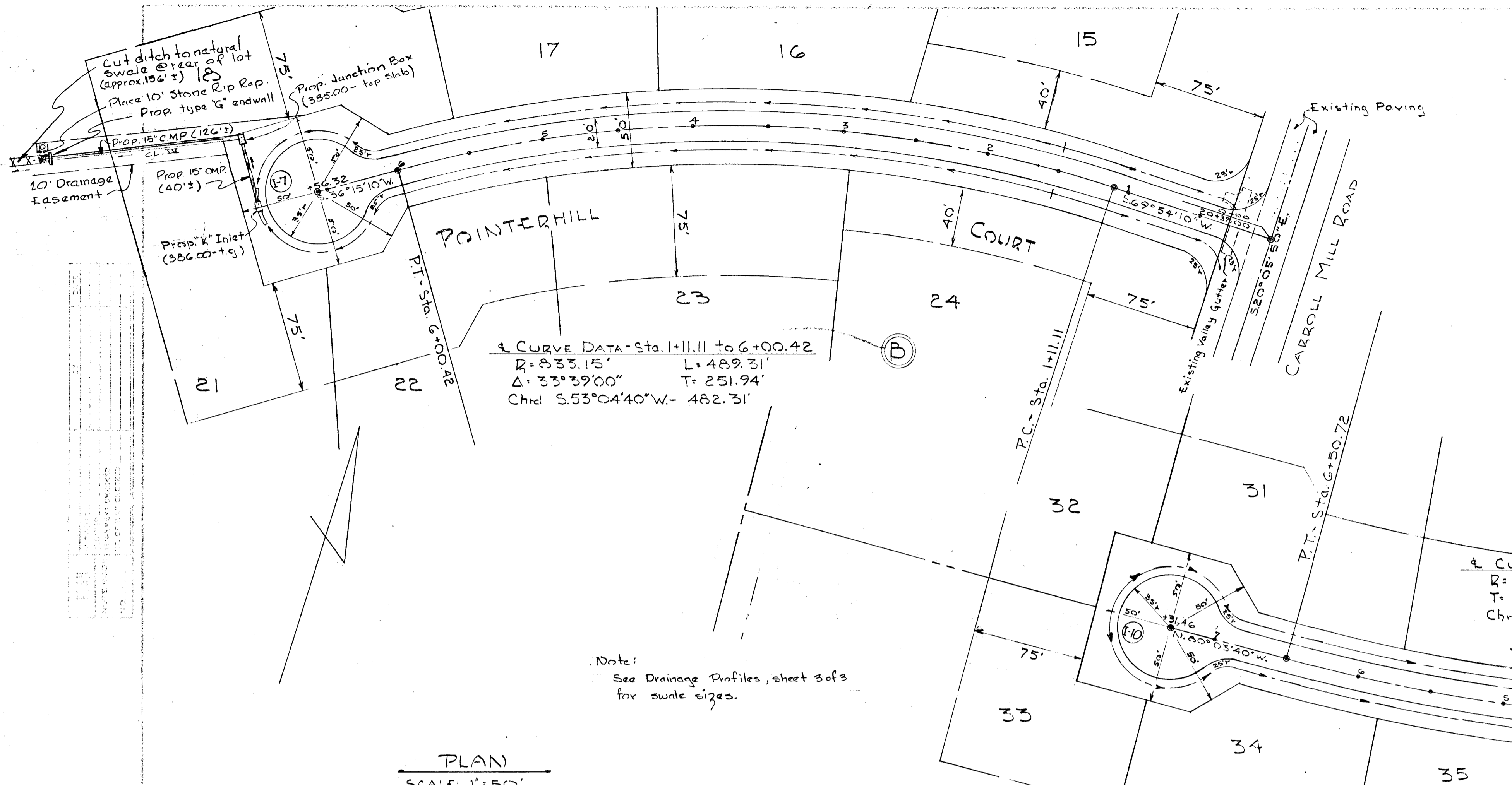
THIRD ELECTION DISTRICT HOWARD COUNTY, MARYLAND
 DATE: OCT 2 1967 SCALE: AS SHOWN
 SHEET N^o 1 OF 3

OWNER / DEVELOPER
 WOODMARK INC.
 MARK WAKEFIELD JR.
 231 CHATHAM ROAD
 ELLICOTT CITY, MARYLAND

APPROVED
 PLANNING COMMISSION
 OF HOWARD COUNTY



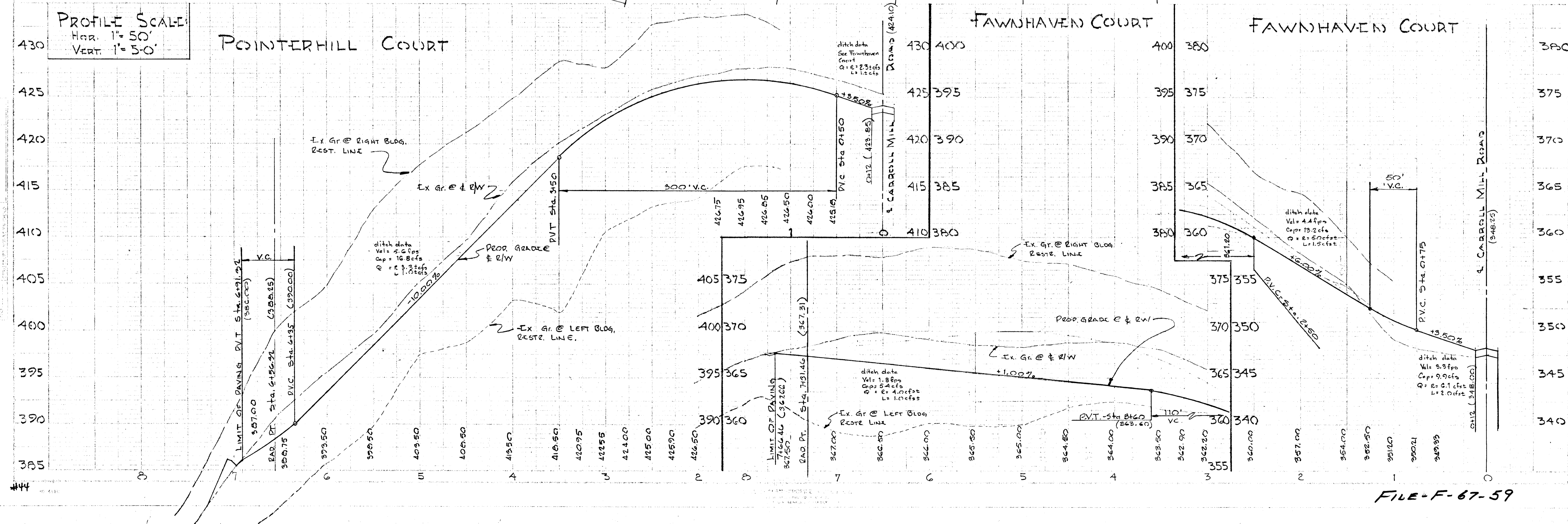
File-F-67-5



3 OCT. 1967 Date
 APPROVED: HOWARD COUNTY PLANNING COMM.
 J.H. Clawson, Senior Engineer, 1-23-68
 Approved: Howard County Roads Dept.
 Bruce H. Nelson, Road Superintendent, 1-23-68
 Approved: Howard County Metropolitan Comm.
 W. Albert, Chief Engineer, 1-22-68

PURDUM & WESCHKE
 ENGINEERS & LAND SURVEYORS
 24 PARK AVENUE
 ELLICOTT CITY, MARYLAND

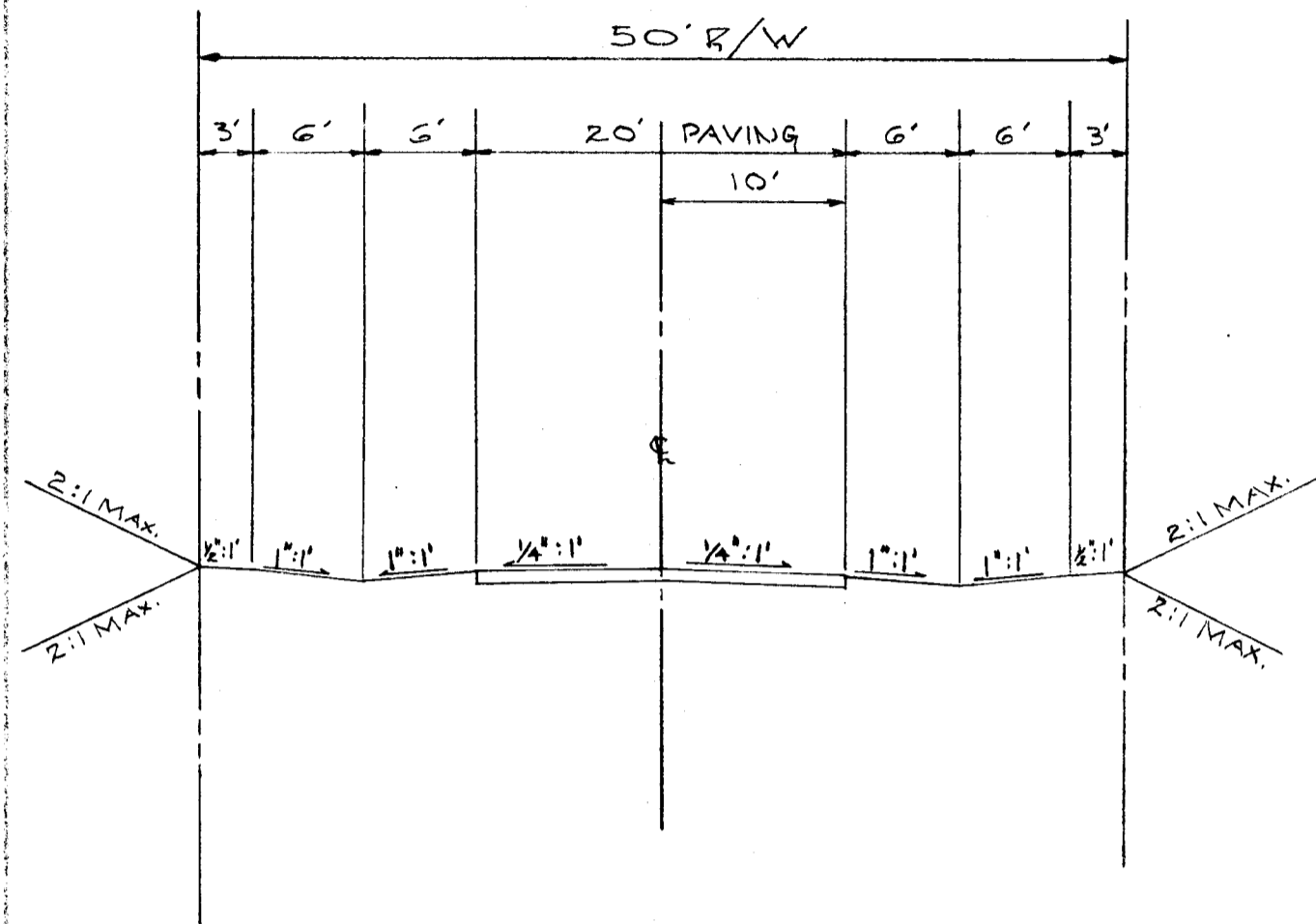
PLAN & PROFILE: POINTERHILL COURT & FAWNHAVEN COURT
 SECTION N^o 2
Woodmark
 420 ELECTION DISTRICT HOWARD COUNTY, MARYLAND
 OCTOBER 30, 1967 SCALE: AS SHOWN
 NOV. 8, 1967 SHEET N^o 2 OF 3
 OWNER & DEVELOPER
 WOODMARK INC.
 MARK WAKEFIELD JR.
 231 CHATHAM ROAD
 ELLICOTT CITY, MARYLAND



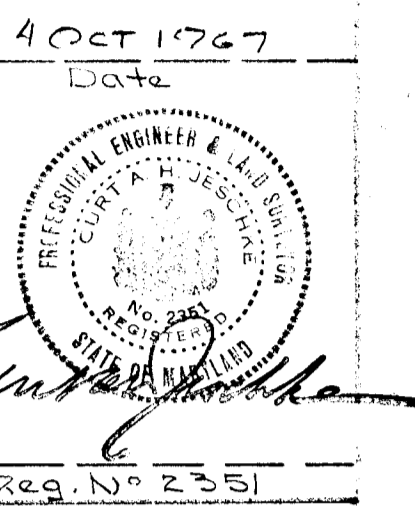
Minimum 9" of compacted Bank Run Gravel M.S.R.C. Spec.
 2lb. Calcium Chloride per Sq. Yd. - leave 30 days.
 Apply 4/10 gal. Prime Oil per Sq. Yd. - leave 5 days
 1 1/2" comp. spec. "B" Bit. Concrete Base course
 1" comp. spec. "B" Bit. Concrete Surface course
 (This surface type to be constructed in accordance with
 Article C-31 Howard County Roads Spec.

GENERAL NOTES

- 1) FOR DETAILS OF TYPE "K" INLET SEE DRAWING D-93, PAGE N^o 148 OF THE HOWARD COUNTY ROAD CONSTRUCTION CODE AND STANDARD SPECS.
- 2) FOR DETAILS OF TYPE "C" ENDWALL SEE DRAWING D-52, PAGE N^o 107 OF THE ABOVE MENTIONED SPECS.



TYPICAL SECTION
 ALL COURTS
 SCALE: 1"=10'



APPROVED
 PLANNING COMMISSION
 OF HOWARD COUNTY

OWNER & DEVELOPER
 WOODMARK INC.
 MARK WAKEFIELD, JR.
 231 CHATHAM ROAD
 ELLICOTT CITY, MARYLAND

APPROVED: HOWARD COUNTY PLANNING COMM.
J.H. Clawson 1-23-68
 APPROVED: HOWARD COUNTY ROADS DEPT.
Rowville W. Heiland 1-23-68
 APPROVED: HOWARD COUNTY METROPOLITAN COMM.
W. O. Albert 1-22-69
 PURDUM & JESCHKE
 ENGINEERS & LAND SURVEYORS
 24 PARK AVENUE
 ELLICOTT CITY, MARYLAND

DETAIL SHEET
 SECTION N^o 2

Woodmark

THIRD ELECTION DISTRICT HOWARD COUNTY, MARYLAND
 DATE: OCT. 2, 1967
 Revised: Nov. 7, 1967 SHEET N^o 3 OF 3
 SCALE: AS SHOWN

