

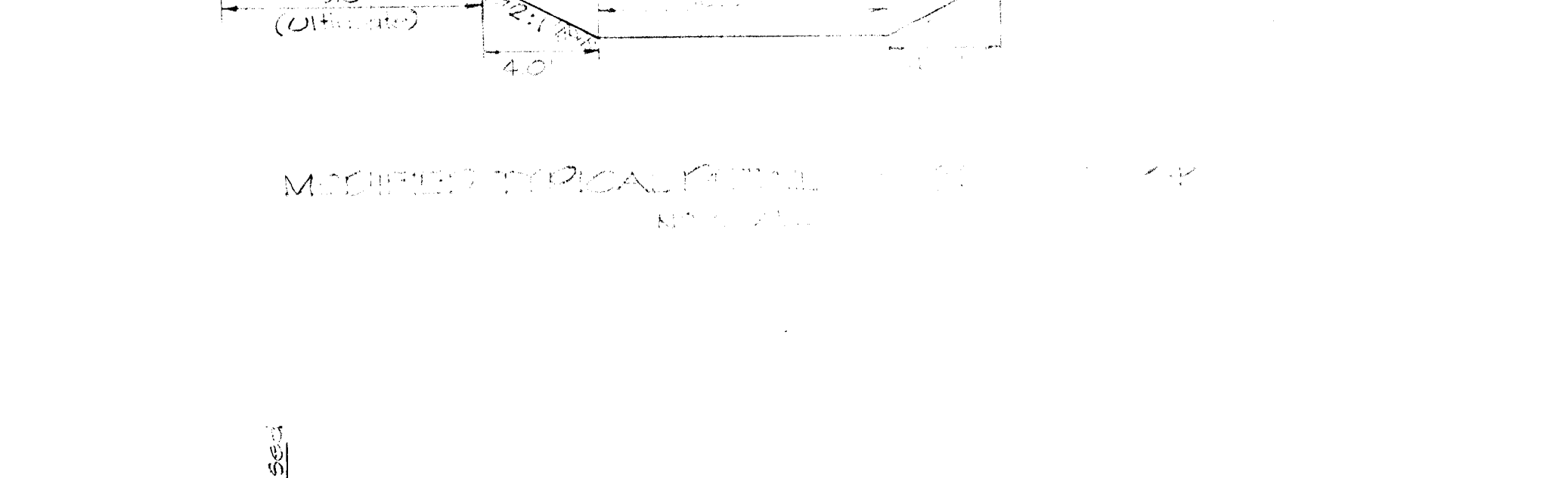
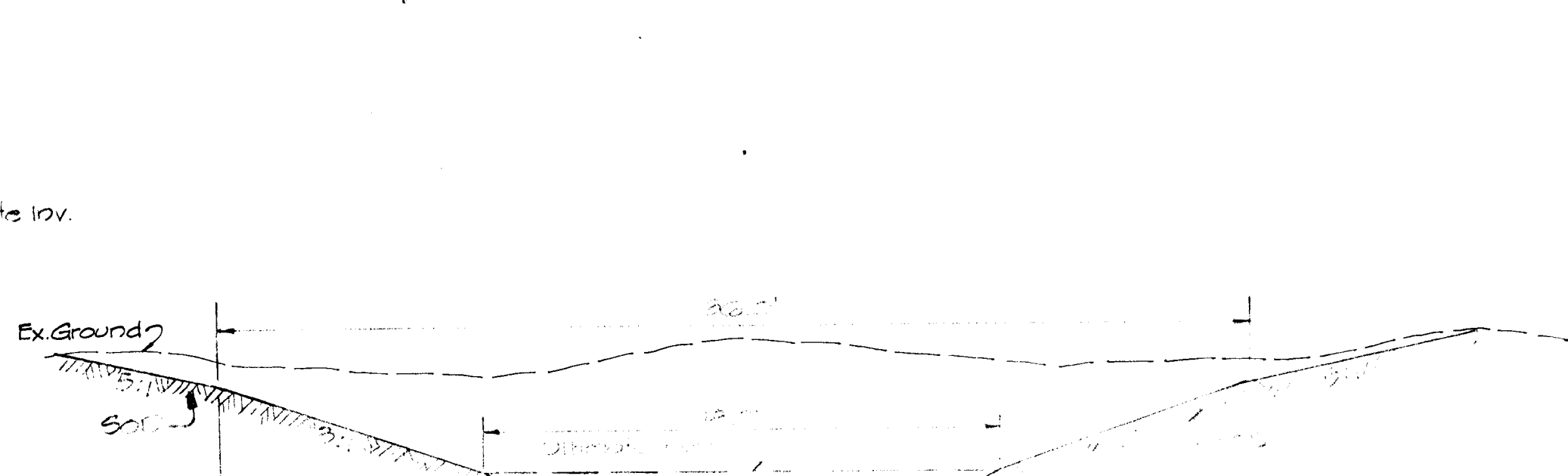
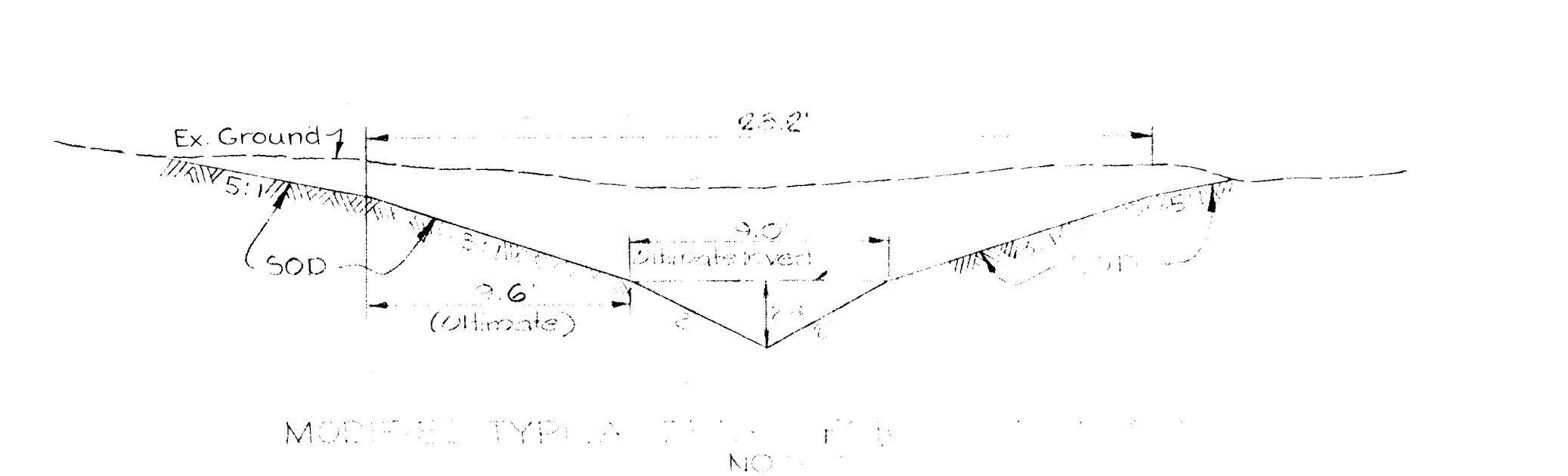
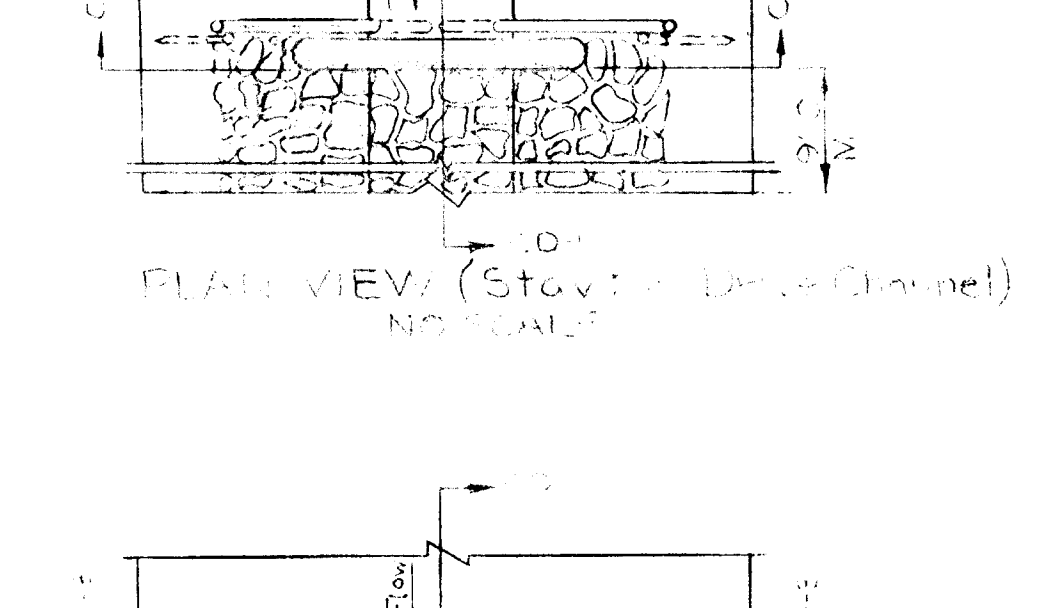
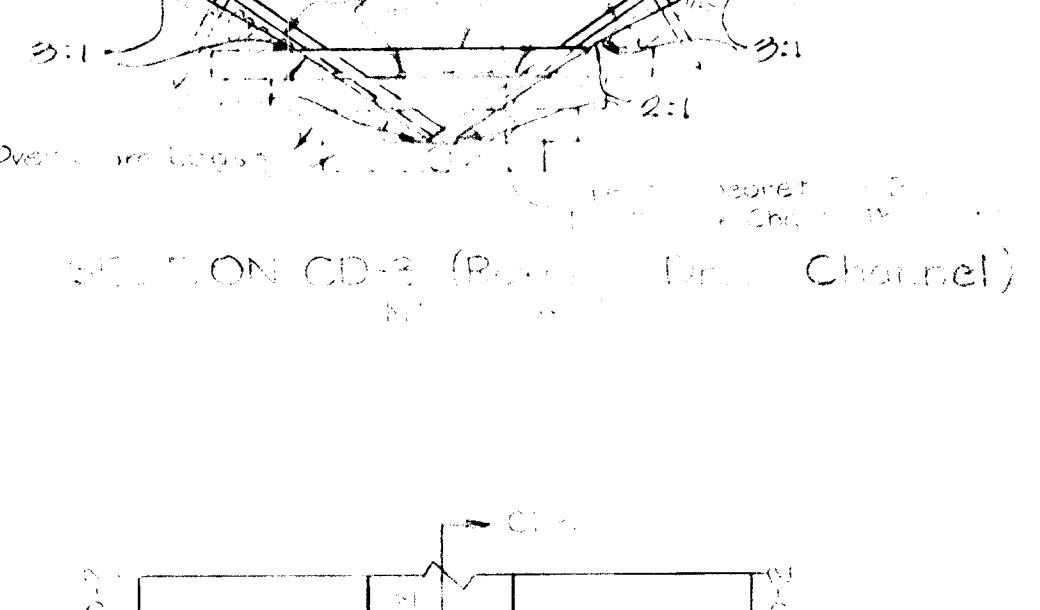
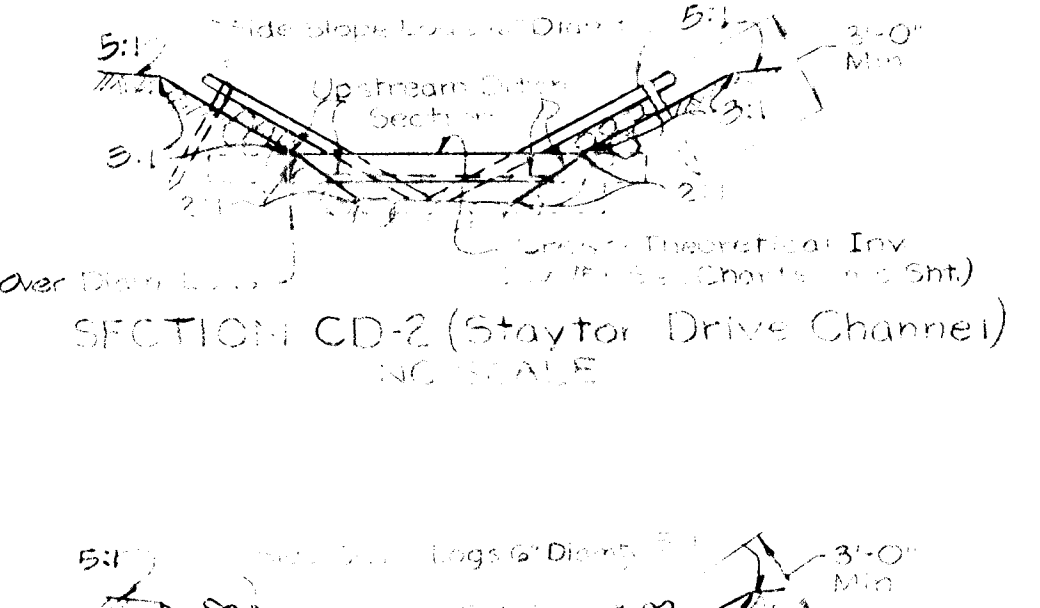
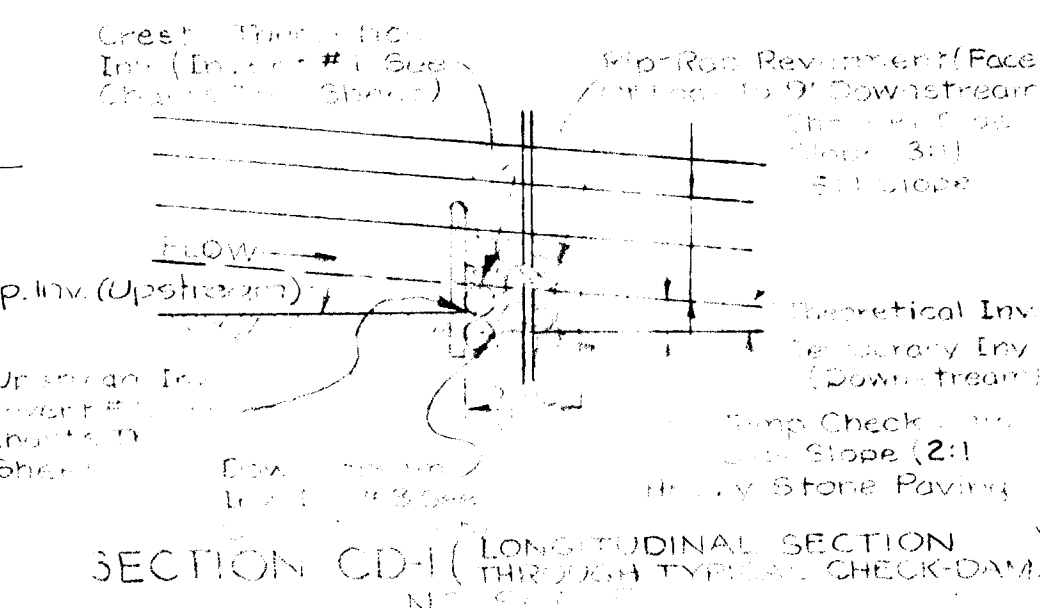
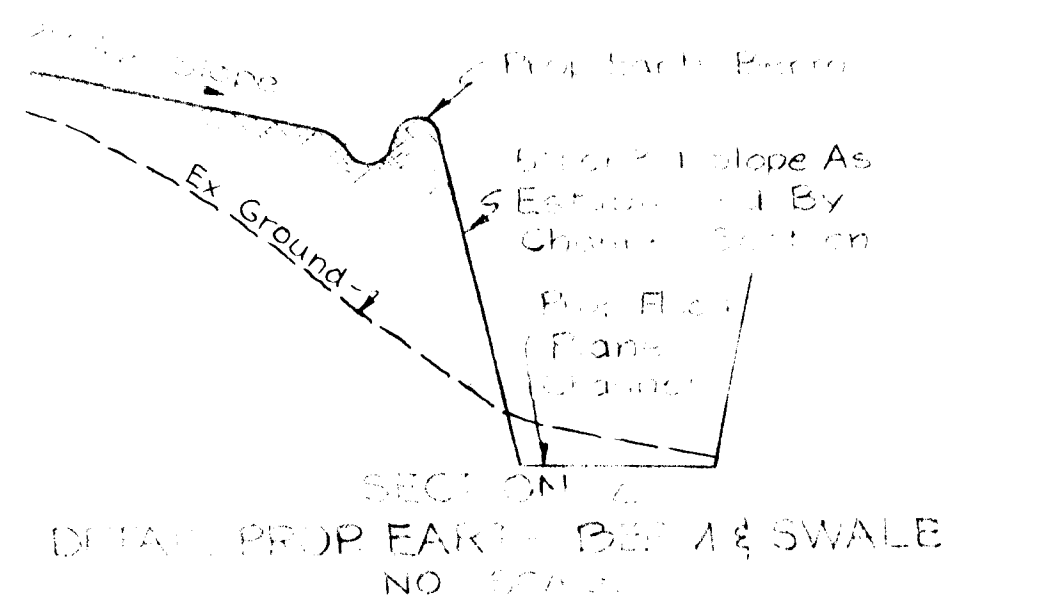
LOCATIONS & INVERTS, LOG CHECK DAMS FOR ROXMOOR DRIVE CHANNEL

STATION	THEORETICAL INVERT #1	UPSTREAM INVERT #2	DOWNSTREAM INVERT #3
11+00	24.7	24.76	24.71
11+25	24.8	24.85	24.75
11+50	24.9	24.95	24.85
11+75	25.0	25.05	24.95
12+00	25.1	25.15	25.05
12+25	25.2	25.25	25.15
12+50	25.3	25.35	25.25
12+75	25.4	25.45	25.35
13+00	25.5	25.55	25.45
13+25	25.6	25.65	25.55
13+50	25.7	25.75	25.65
13+75	25.8	25.85	25.75
14+00	25.9	25.95	25.85
14+25	26.0	26.05	25.95

LOCATIONS & INVERTS, LOG CHECK DAMS FOR STAYTON DRIVE CHANNEL

STATION	THEORETICAL INVERT #1	UPSTREAM INVERT #2	DOWNSTREAM INVERT #3
11+25	24.7	NONE	24.02
11+50	24.8	NONE	24.32
11+75	24.9	NONE	24.62
12+00	25.0	NONE	24.92
12+25	25.1	NONE	25.22
12+50	25.2	NONE	25.52
12+75	25.3	NONE	25.82
13+00	25.4	NONE	26.12
13+25	25.5	NONE	26.42
13+50	25.6	NONE	26.72
13+75	25.7	NONE	27.02
14+00	25.8	NONE	27.32
14+25	25.9	NONE	27.62

1- Presently Proposed
 2- Possibly Future (if needed)
 * See Notes, Plans, This Sheet
 For Details of Alternative Check Dam Construction



TYPICAL PROFILE FOR LOG CHECK DAMS PRESENTLY PROPOSED OR FUTURE

APPROVED
 PLANNING COMMISSION
 OF HOWARD COUNTY

SUGGESTED EROSION CONTROL MEASURES
 SECTION ONE
**BALTIMORE-WASHINGTON
 INDUSTRIAL PARK**
 HOWARD CO., MARYLAND ELECT. DIST. NO. 6
 SCALE: AS SHOWN JAN. 21, 1968