

OWNER & DEVELOPER
 CHATHAM CORP OF HOWARD CO.
 687 BALTIMORE NATIONAL PIKE
 ELLICOTT CITY, MARYLAND

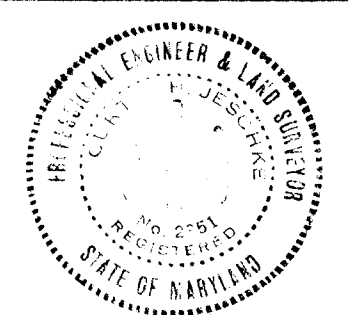
PLAN & PROFILE: OLD FENCE ROAD
 SECTION NO. 10

CHATHAM

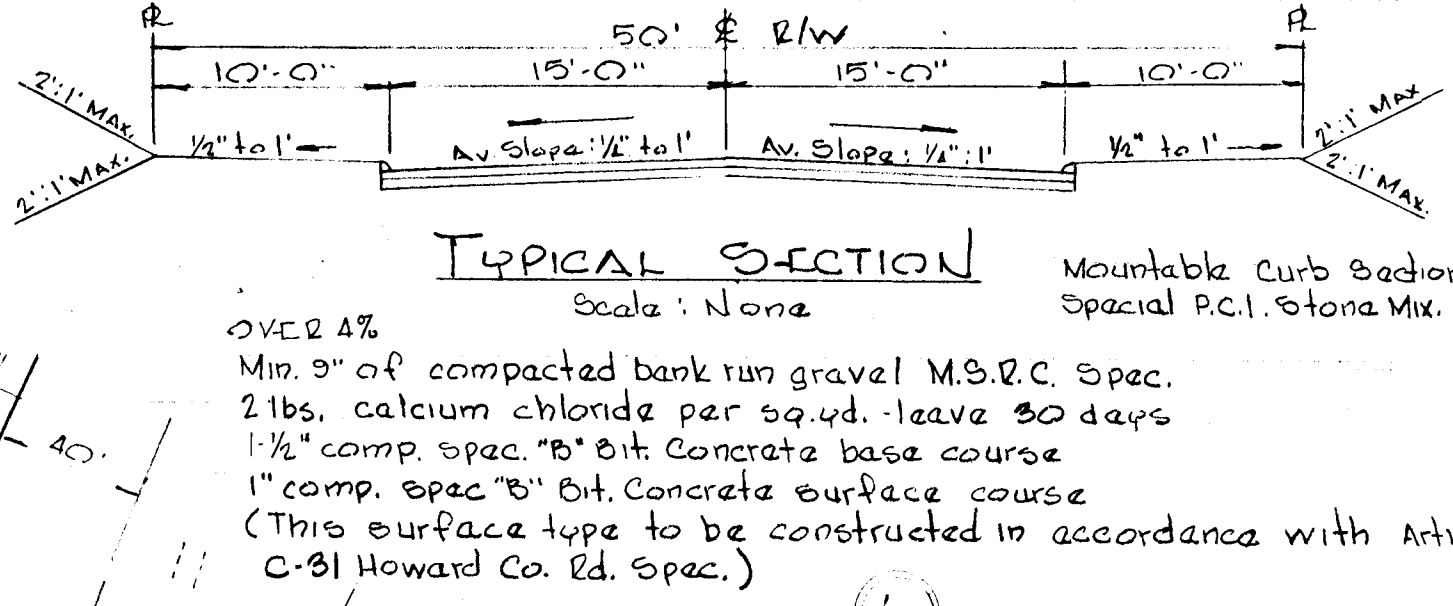
2ND ELECTION DISTRICT - HOWARD COUNTY, MD.
 AUGUST 10, 1967
 14 Sept. 1967
 SCALE: AS SHOWN

APPROVED: HOWARD COUNTY PLANNING COMMISSION
 Planning Engineer: *J. H. Dawson* Date: 11-29-67
 APPROVED: HOWARD COUNTY ROADS DEPARTMENT
 Roads Engineer: *D. N. Neeland* Date: 12-4-67
 APPROVED: HOWARD COUNTY METROPOLITAN COMMISSION
 City Engineer: *W. G. Faber* Date: 1-8-67

PURDUM & JESCHKE
 ENGINEERS
 24 PARK AVENUE
 ELLICOTT CITY, MD.



W. G. Faber
 12351
 23 June 1967
 Date

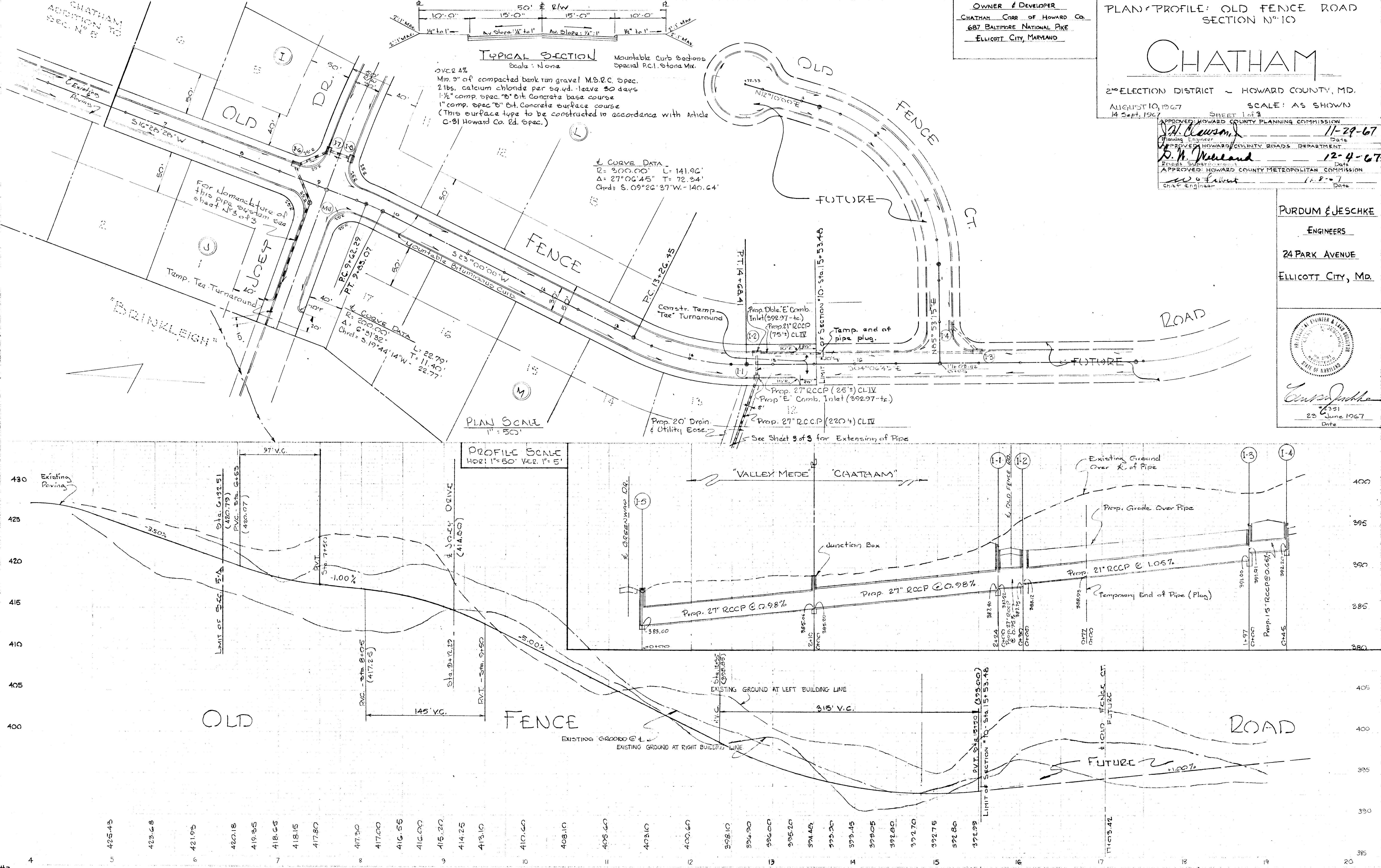


∠ CURVE DATA
 R = 300.00' L = 141.96'
 Δ = 27°06'45" T = 72.34'
 Chords: S. 09°26'37" W. - 140.64'

∠ CURVE DATA
 R = 200.00' L = 22.79'
 Δ = 6°31'32" T = 11.40'
 Chords: S. 19°44'14" W. - 22.77'

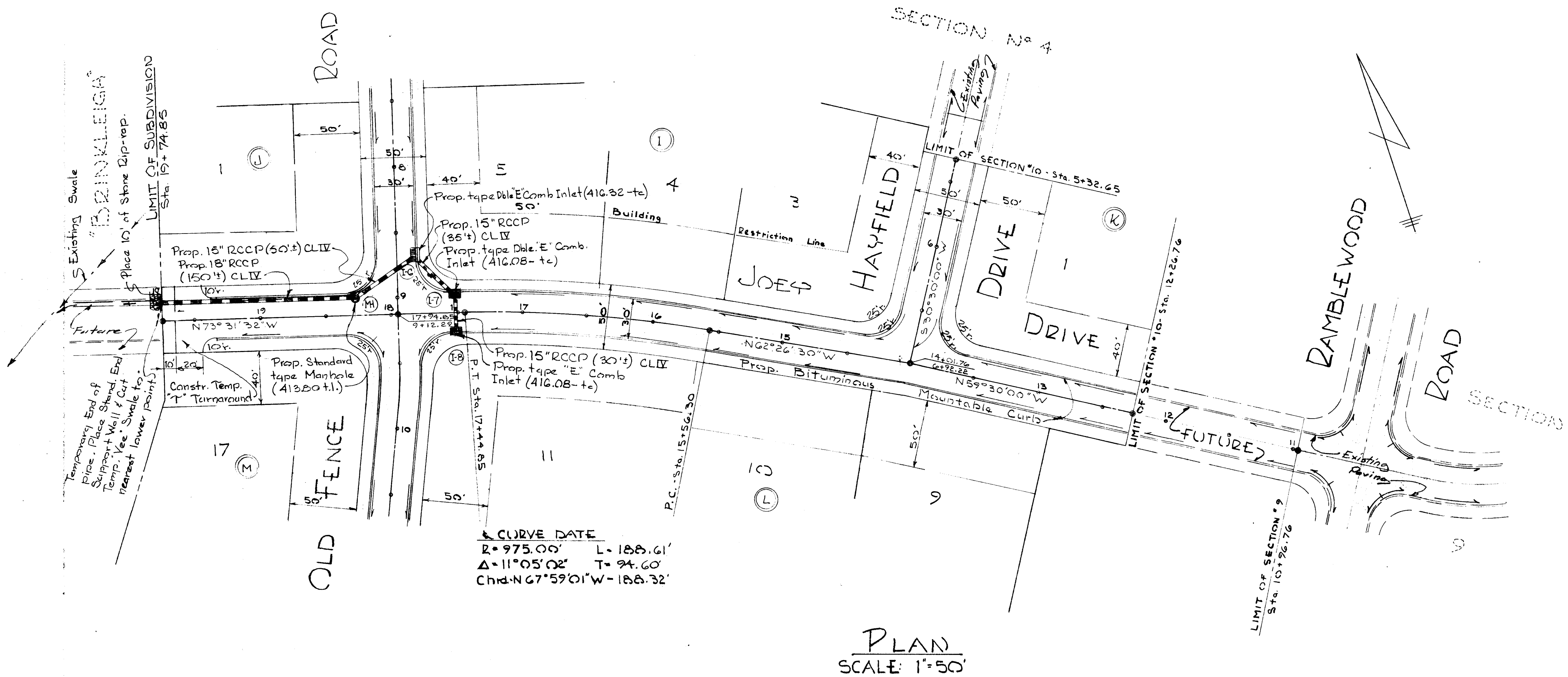
PLAN SCALE
 1" = 50'

PROFILE SCALE
 HOR: 1" = 50' VER: 1" = 5'



GENERAL NOTES

- 1) For typical paving section * see drwg. D-15, page 70 of the Howard County Road Construction Code & Standard Specifications. (* Delete skelway)
- 2) For typical curb section see drwg. D-39, page 94 of the above Specifications.
- 3) For type "E" Inlet see drwg. D-68, page 123 of the above Specifications.
- 4) For type "K" Inlet see drwg. D-93, page 148 of the above Specifications.
- 5) For Junction Box see drwg. D-108, page 163 of the above Specifications.
- 6) For Standard Manhole see drwg. D-103, page 158 of the above Specifications.
- 7) For Standard Support Wall see drwg. D-46, page 101 of the above Specifications.



APPROVED: HOWARD COUNTY PLANNING COMM. **11-29-67** Date
H. Lawson Senior Engineer
 APPROVED: HOWARD COUNTY ROAD DEPT. **12-6-67** Date
Bruce J. Wilson Roads Superintendent
 APPROVED: HOWARD COUNTY METROPOLITAN COMM. **11-8-67** Date
W. of ... Chief Engineer

PURDUM AND VESCHKE ENGINEERS
 24 PARK AVENUE
 ELICOTT CITY, MARYLAND

OWNER AND DEVELOPER
CHATHAM CORP.
 687 BALTO. NATL. PIKE
 ELICOTT CITY, MARYLAND

PLAN & PROFILE: JOEY DRIVE - HAYFIELD DRIVE
 SECTION No 10
 7 August 1967
 AUGUST 10, 1967
 14 SEPT. 1967 SHEET 2 of 3

SCALE: AS SHOWN

Reg. No. 2351

