

COLUMBIA

ELECTION DISTRICT 2

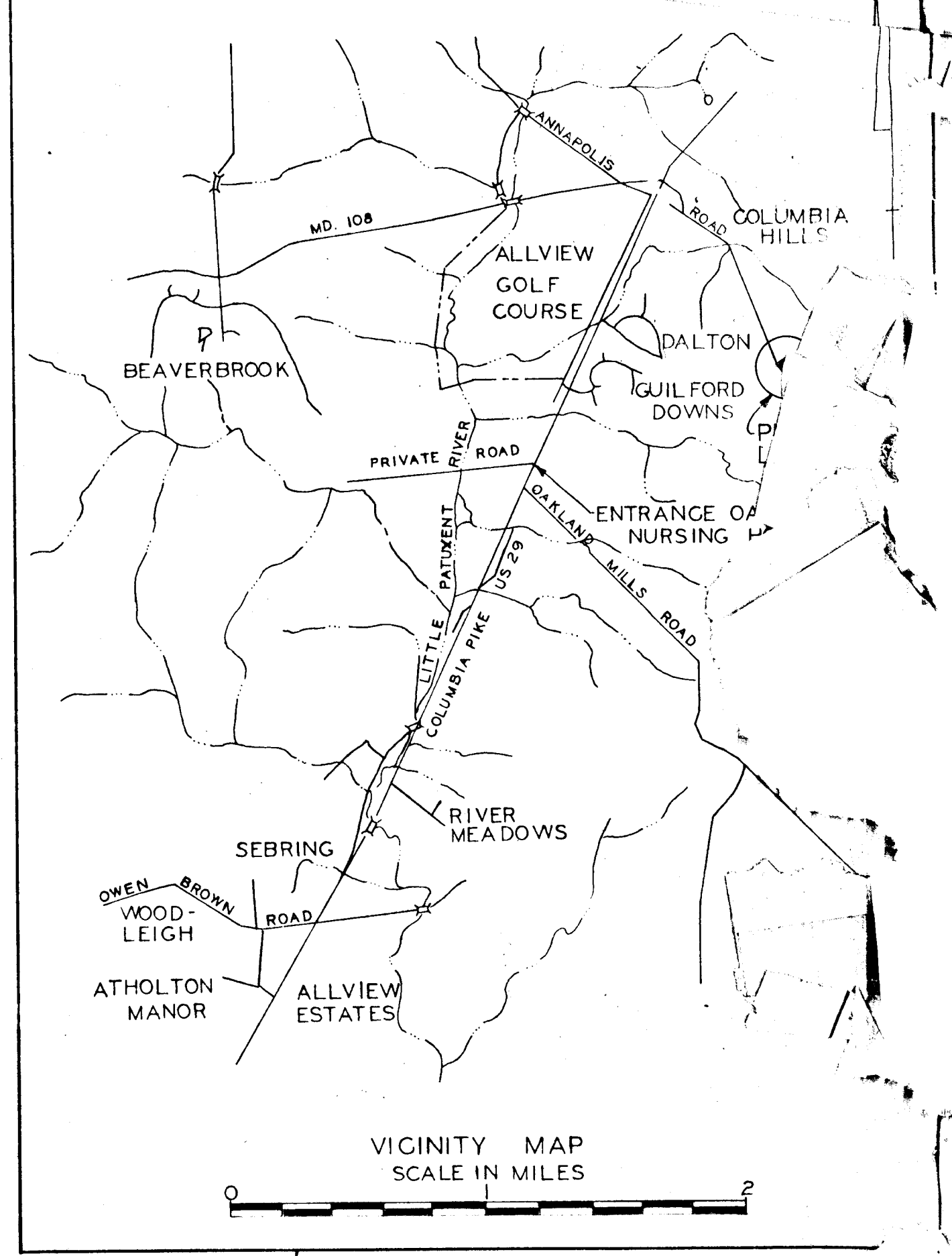
OAKLAND RIDGE INDUSTRIAL PARK

SECTION 1

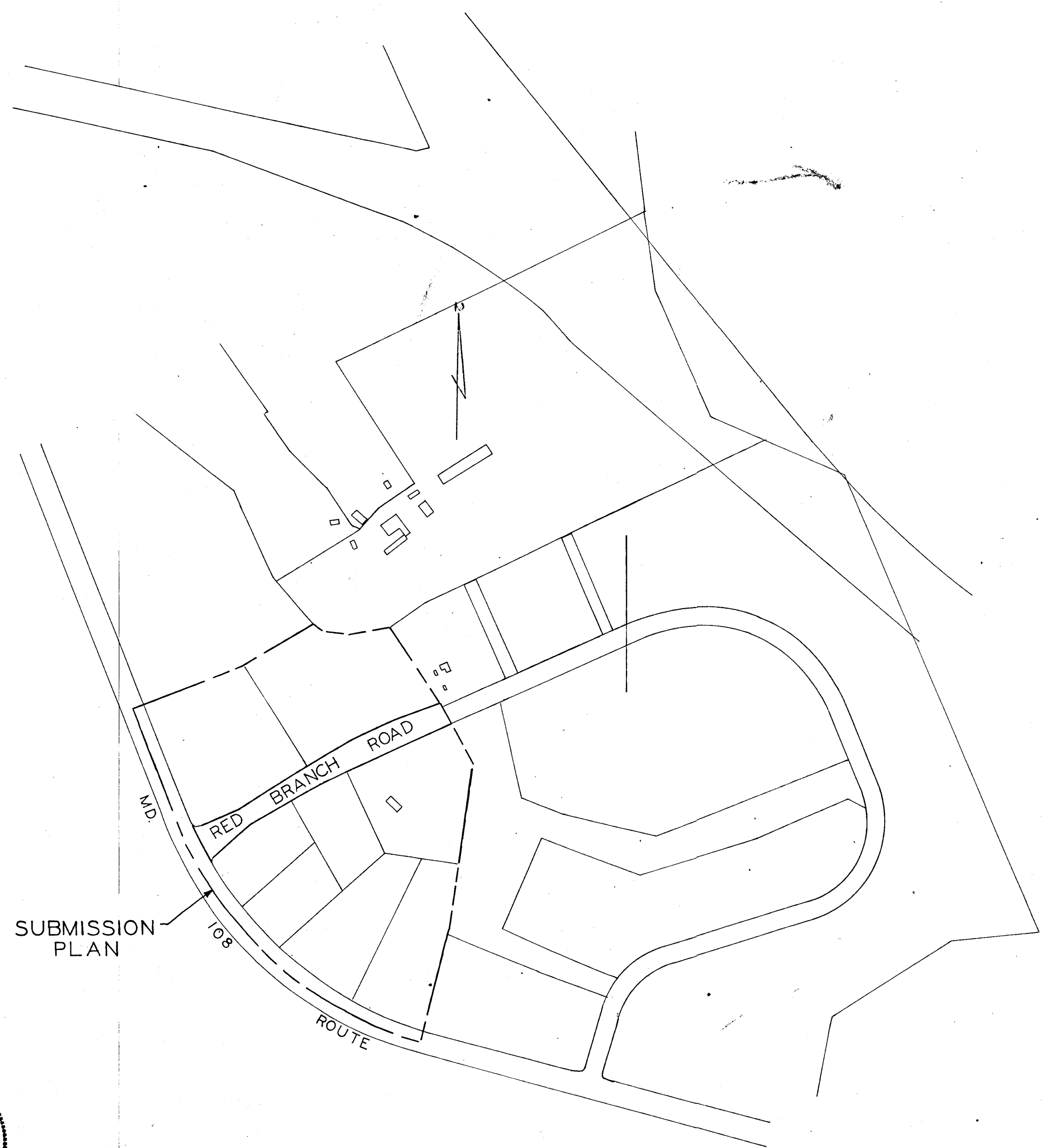
HOWARD RESEARCH & DEVELOPMENT CORP.

HOWARD COUNTY, MARYLAND

AUGUST 1966



INDEX		
DESCRIPTION	STREET NAME	DRAWING NO.
TITLE SHEET		1
PLAN & PROFILE	RED BRANCH ROAD	2
DRAINAGE PLANS	DRAINAGE PROFILES	3
DRAINAGE SHEET	DRAINAGE DETAILS	4
DRAINAGE	AREA PLAN	
DRAINAGE	STORM DRAIN	



APPROVED
PLANNING COMMISSION
OF HOWARD COUNTY
DATE MAR 6 1967

Approved by Howard County Planning Commission
J.A. Clavon 3-6-67
DATE
Approved by Howard County Road Dept.
Franklin M. Heiland Feb 28, 1967
DATE
Approved by Howard County Metropolitan Comm.
W.O. Albert 3-6-67
DATE

PURDUM & JESCHKE ENGINEERS & LAND SURVEYORS
24 PARK AVENUE ELLICOTT CITY, MARYLAND



Carl M. Jeschke

KEY MAP
SCALE: 1" = 400'

CRP25
#164

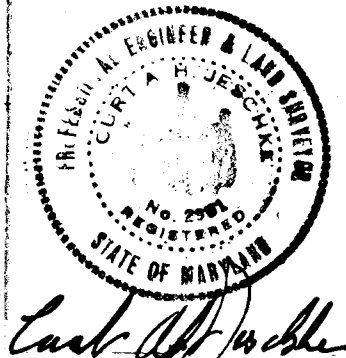
PLAN & PROFILE OF RED BRANCH ROAD SECTION I
OAKLAND RIDGE INDUSTRIAL PARK
COLUMBIA

SECOND ELECTION DISTRICT
4 OCT. 1966
HOWARD COUNTY, MARYLAND
SCALE: AS SHOWN
SHEET 2 OF 6

THE HOWARD RESEARCH AND DEVELOPMENT CORP.
THE VILLAGE OF CROSS KEYS
BALTIMORE, MARYLAND, 21210
PURDUM & JESCHKE ENGINEERS & LAND SURVEYORS
24 PARK AVENUE
ELLICOTT CITY, MARYLAND

NOTE: Paving to consist of:
a) 9" Compacted Md. Spec. "B" bituminous concrete (6" base - 3" surface) or
b) 12" Compacted plant mix stabilized stone aggregate plus 3 1/2" compacted Md. Spec. "B" bituminous concrete (2" base - 1 1/2" surface).

7 July 1966



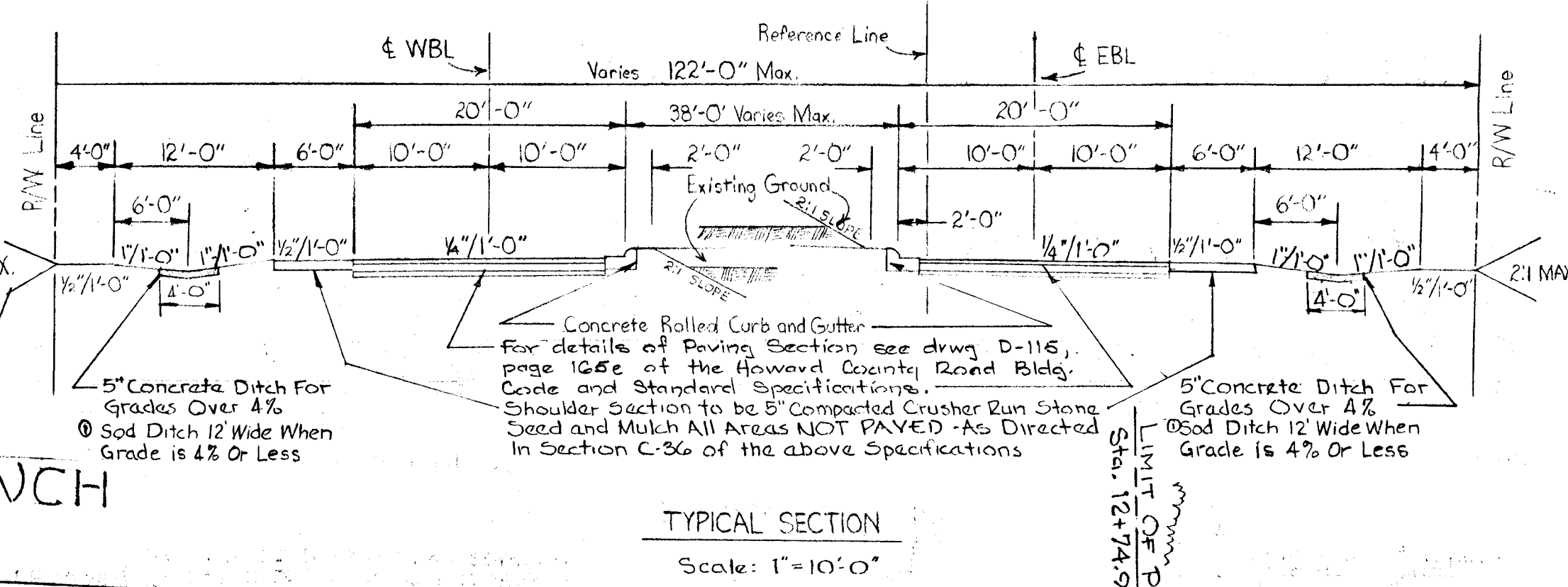
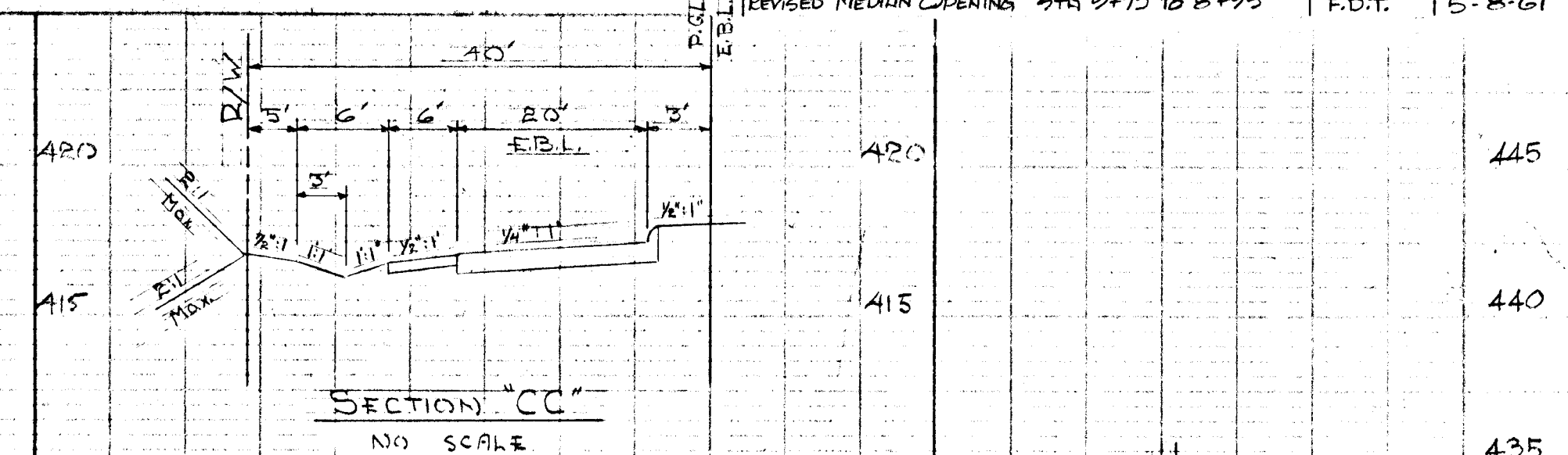
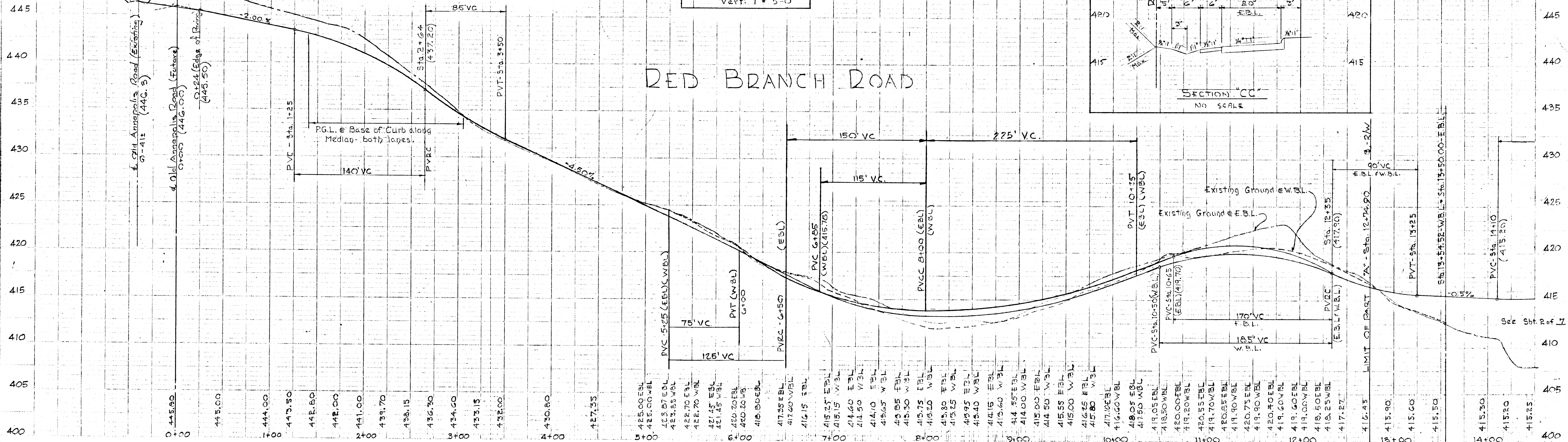
NOTE:
1) For details of Concrete Curb & Gutter see drwg. D-116, page 166 of the Howard County Road Bldg. Code and Standard Specifications.
2) For details of temporary curb see drwg. D-59, page 94 of the Howard County Road Bldg. Code and Standard Specifications.

Approved: Howard County Planning Comm.	
Engineer: <i>J. J. Clewson</i>	3-6-67
Approved: Howard County Roads Dept.	
Supervisor: <i>W. M. McLeod</i>	Feb. 28, 1967
Approved: Howard County Metropolitan Comm.	
Engineer: <i>W. O. F. Ives</i>	3-6-67
Approved: MARYLAND STATE ROAD COMMISSION	
Assistant: <i>David B. Kelly</i>	DATE: <i>MR. 3, 1967</i>
ASSISTANT TO PLACEMENT ENGR.	

APPROVED
PLANNING COMMISSION
OF HOWARD COUNTY
DATE: MAR 6 1967

PLAN SCALE: 1" = 50'
CURVE DATA - E.B.L.
Sta. 4+02.32 to Sta. 7+00.34
Rad. = 2328.74' L = 298.61'
Δ = 7° 20' 49" T = 149.62'
Chrd. = N 62° 12' 45" E - 298.42'

PROFILE SCALE:
Hor: 1" = 50'
Vert: 1" = 5'-0"

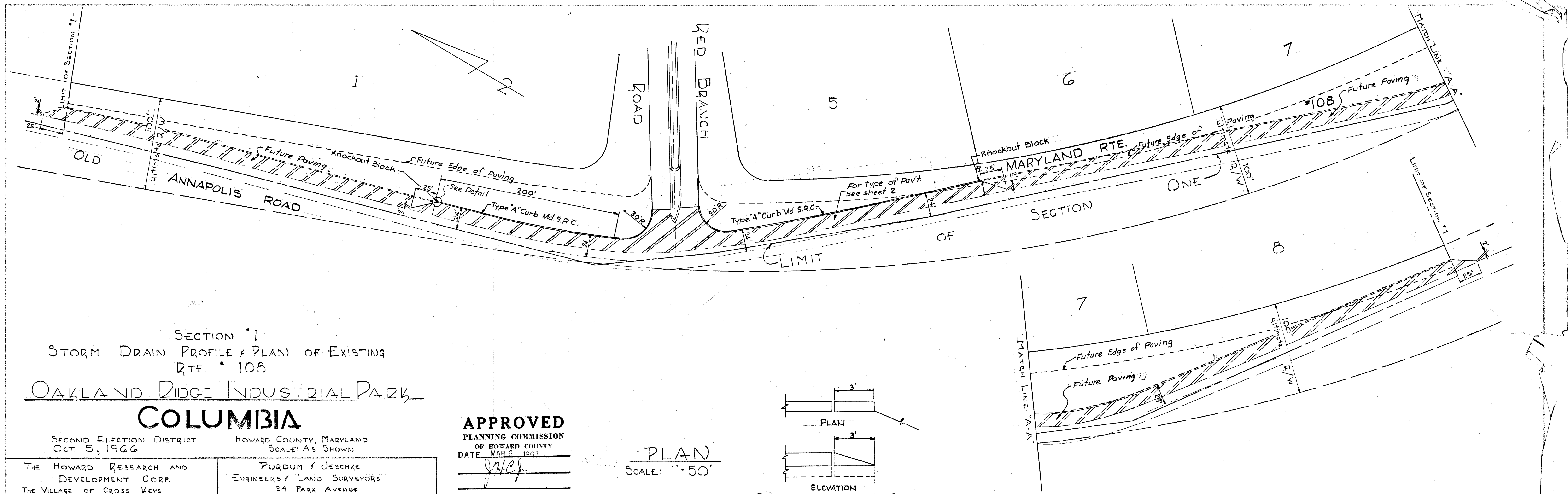


CRP 25 #64

C.C.F. No. B-3-62

SHEET NO. 2 OF 6

F-37



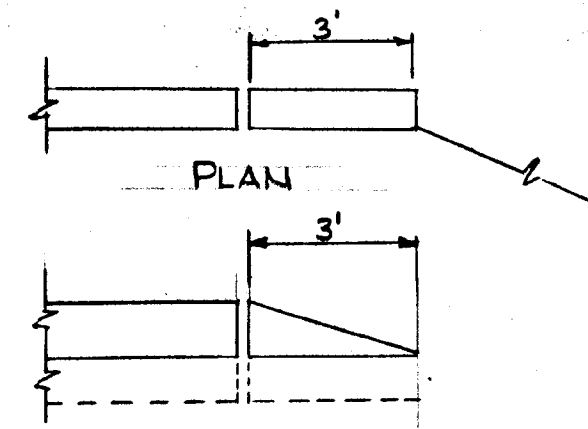
SECTION #1
STORM DRAIN PROFILE & PLAN OF EXISTING
RTE. # 108
OAKLAND RIDGE INDUSTRIAL PARK

COLUMBIA

SECOND ELECTION DISTRICT
OCT. 5, 1966
HOWARD COUNTY, MARYLAND
SCALE: AS SHOWN

APPROVED
PLANNING COMMISSION
OF HOWARD COUNTY
DATE: MAR 6 1967

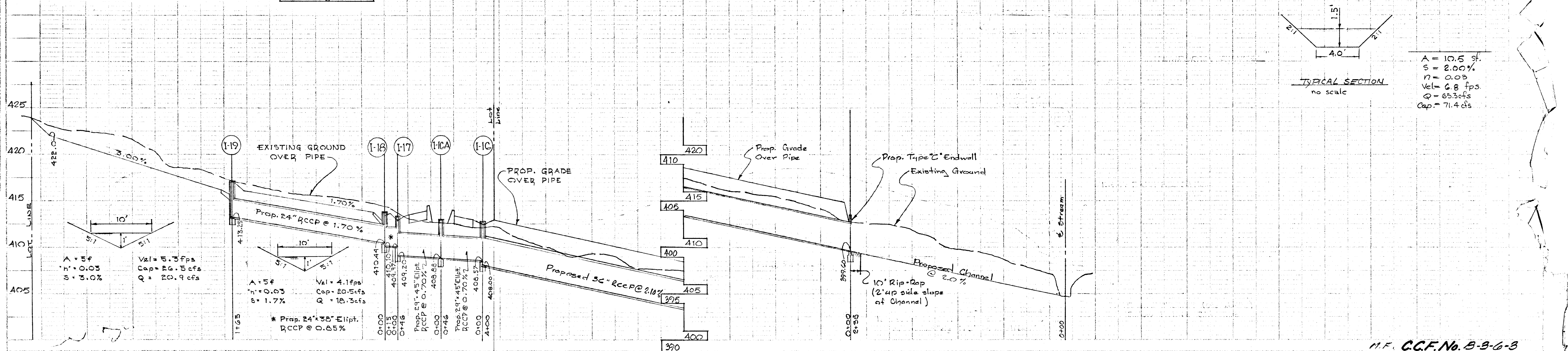
PLAN
SCALE: 1" = 50'



ELEVATION
DETAIL OF KNOCKOUT BLOCK @ END OF CURB
(No scale)

PROFILE SCALE
HOR. : 1" = 50'
VERT. : 1" = 5' 0"

<p>THE HOWARD RESEARCH AND DEVELOPMENT CORP. THE VILLAGE OF CROSS KEYS BALTIMORE, MARYLAND, 21210</p>	<p>PURDUM & JESCHKE ENGINEERS & LAND SURVEYORS 24 PARK AVENUE ELLCOTT CITY, MARYLAND</p>
<p>APPROVED: HOWARD COUNTY PLANNING COMMISSION <i>J. H. Clawson</i> 3-6-67 APPROVED: HOWARD COUNTY ROADS DEPARTMENT <i>Russell W. McLeod</i> JUL 28 1967 APPROVED: HOWARD COUNTY METROPOLITAN COMMISSION <i>W. O. Tolbert</i> 3-6-67 APPROVED: MARYLAND STATE TOLLS COMMISSION <i>David A. Tolbert</i> MAR 3 1967</p>	<p>APPROVED: MARYLAND STATE TOLLS COMMISSION <i>David A. Tolbert</i> MAR 3 1967 APPROVED: MARYLAND STATE TOLLS COMMISSION <i>David A. Tolbert</i> MAR 3 1967</p>



N.F. C.C.F. No. B-9-G-3

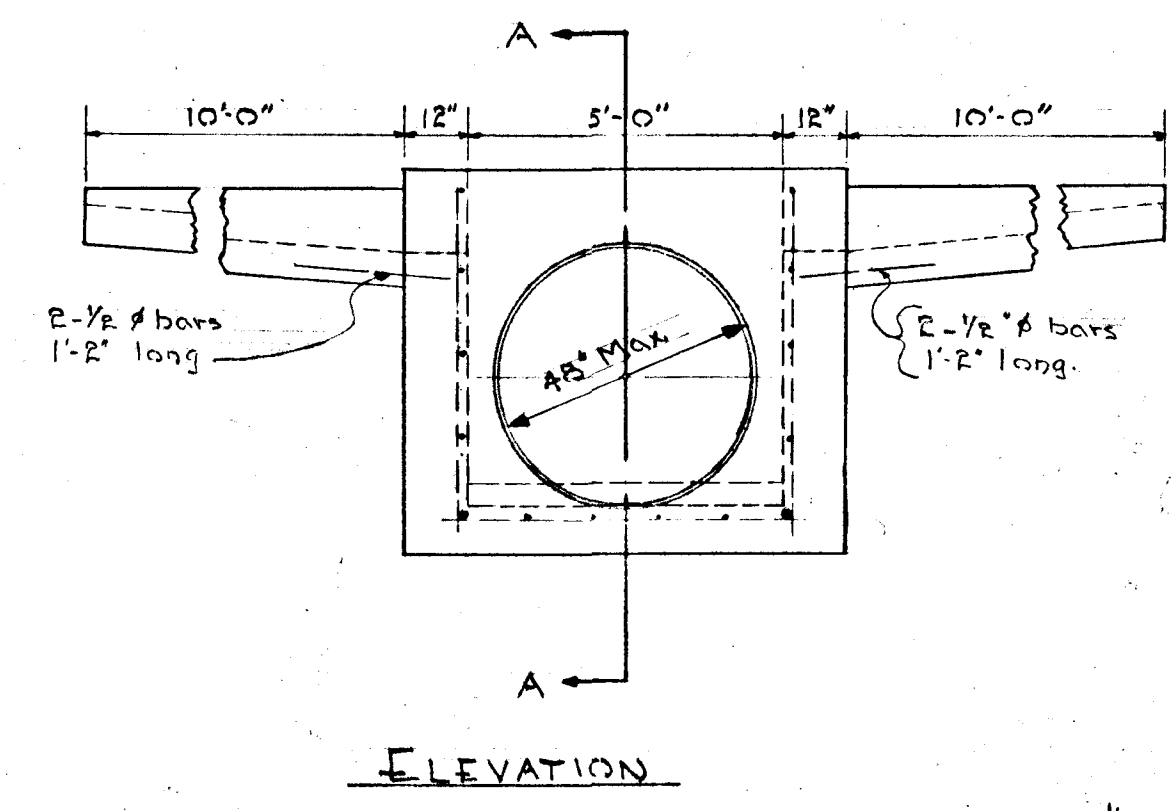
CRP 25 #64

Note:

The Concrete Valley Gutter to be used in connection with this inlet, will be warped from the standard section to meet the section at the end of the inlet. This transition will take place within a distance of ten (10) feet from the inlet.
 Pipe outlets and gutter approaches can be revised to meet existing conditions.

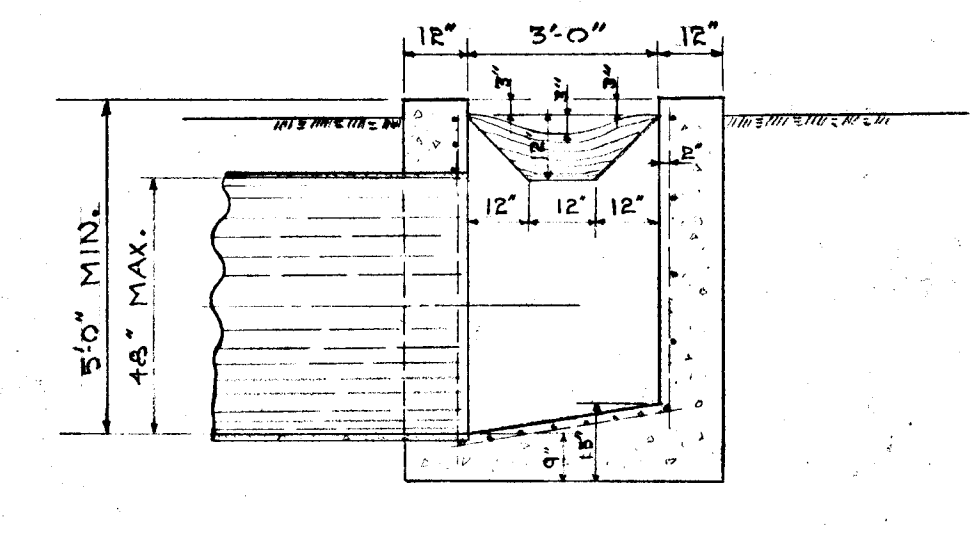
General Notes:

- Steel - Vert. $\frac{1}{2}$ " # bars, 6" c.c.
- Hor. $\frac{1}{2}$ " # bars, 6" c.c.
- Bot. $\frac{1}{2}$ " # bars, 6" c.c.
- Concrete - See S.D.C. Spec.
- For "Single Opening", close one end.
- Batter: - Inside faces, $\frac{1}{4}$ " per ft.
- Chamfer: - Inside corners, $\frac{1}{2}$ " x $\frac{1}{2}$ "

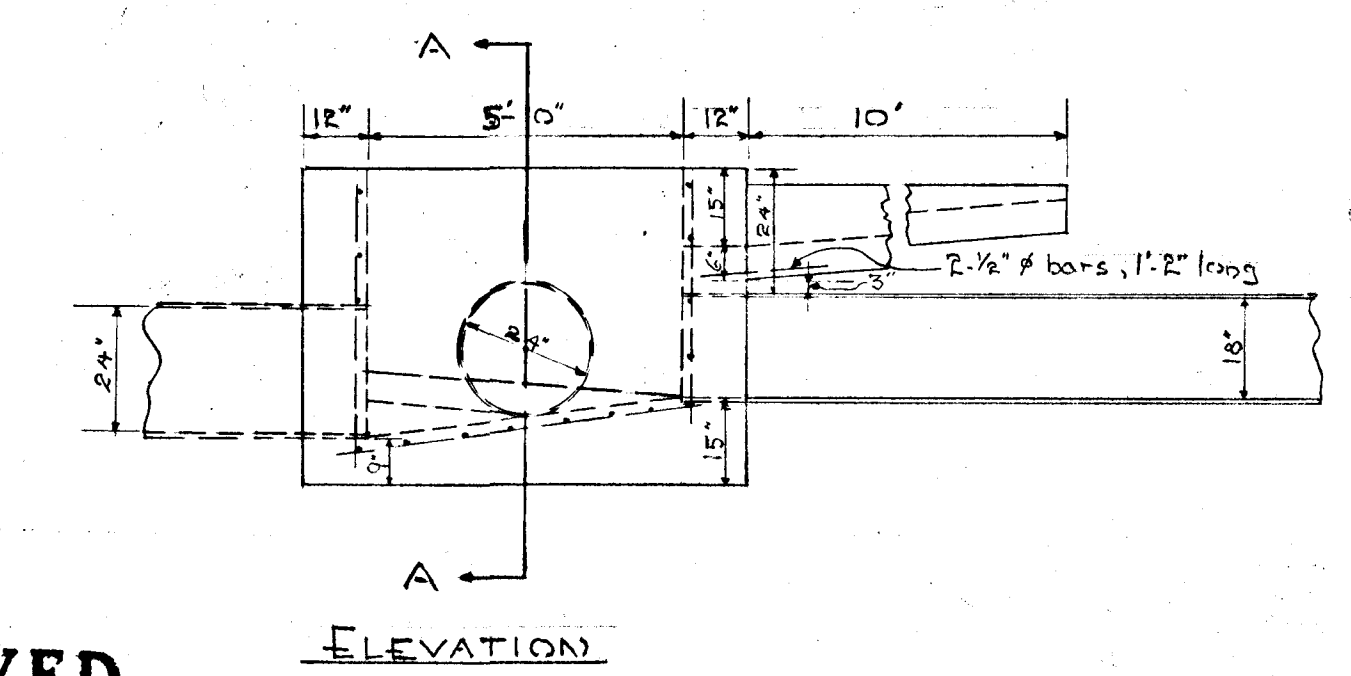


ELEVATION

DETAILS OF "K-1" INLET
SCALE: 1" = 30'

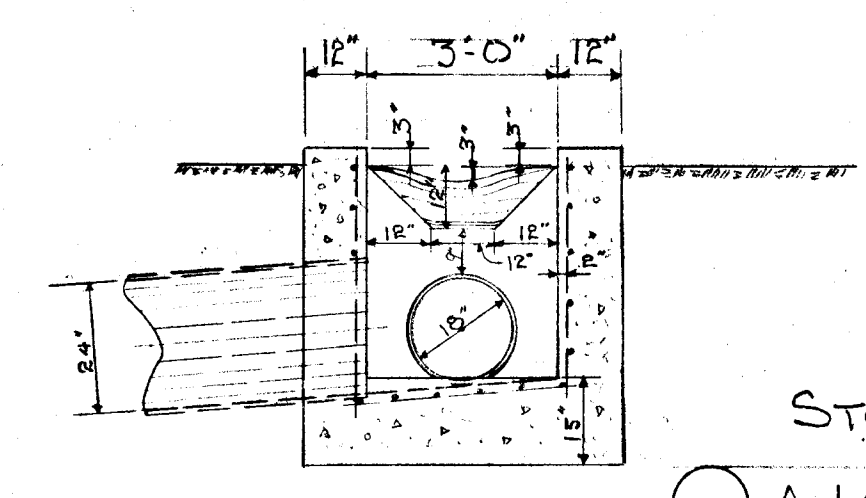


SECTION "A-A"

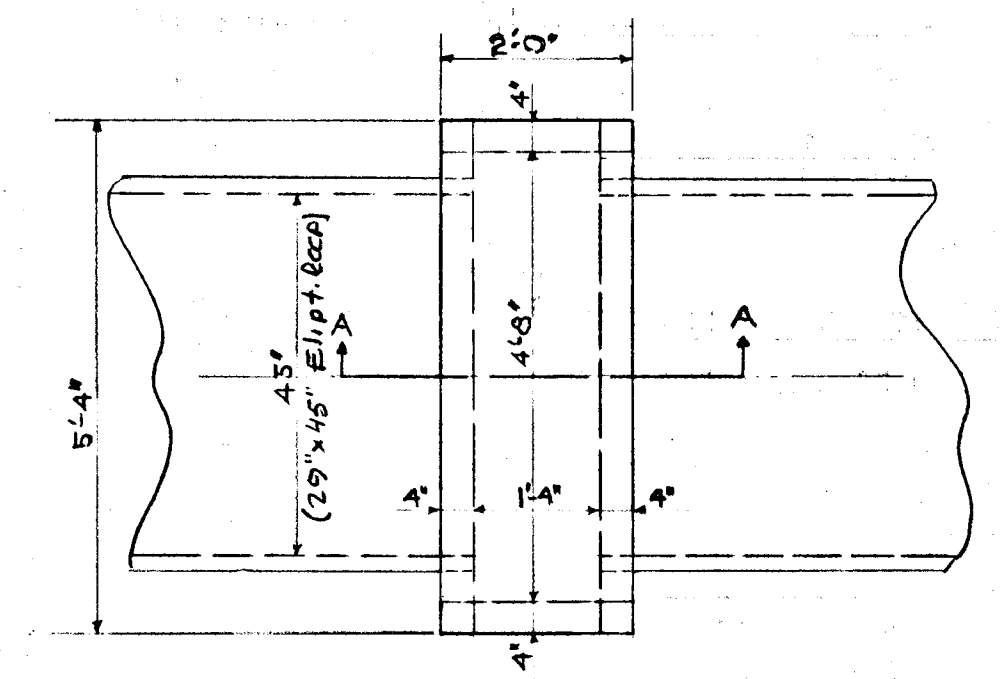


ELEVATION

DETAILS OF "K-2" INLET
SCALE: 1" = 30'

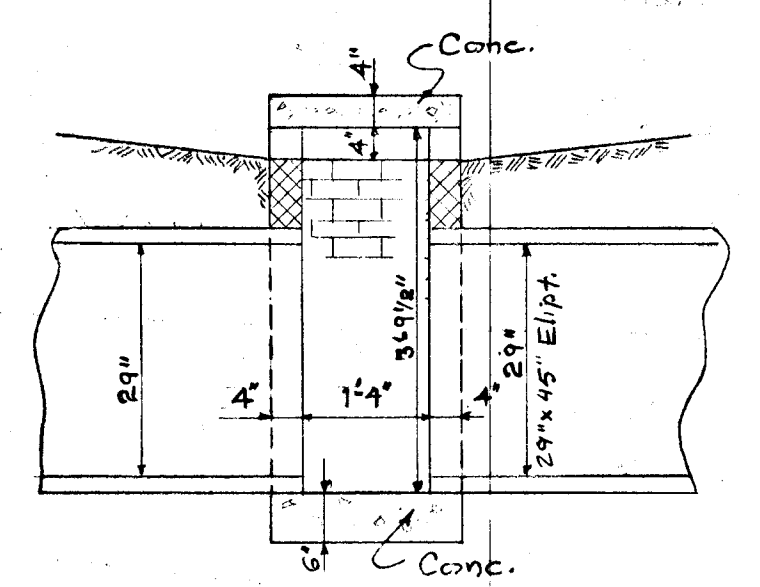


SECTION "A-A"



PLAN

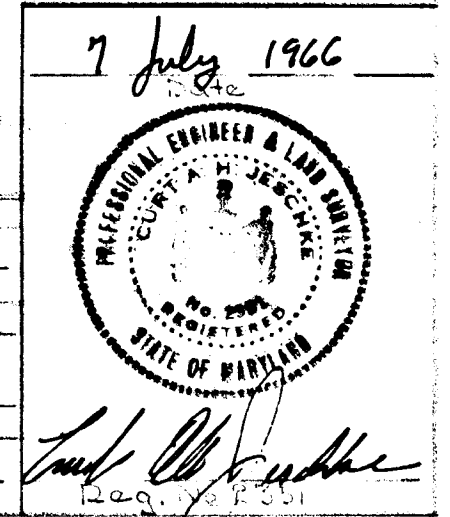
MOD. "D" INLET
SCALE: 1/2" = 1'-0"



SECTION "A-A"

APPROVED
 PLANNING COMMISSION
 OF HOWARD COUNTY
 DATE: MAR 6 1967

Approved: Howard County Planning Commission: *J. J. Clawson* 3-6-67
 Approved: Howard County Roads Department: *Donald W. Westland* Feb 28, 1967
 Approved: Howard County Metropolitan Commission: *W. O. Fildes* 3-6-67
 Chief Engineer

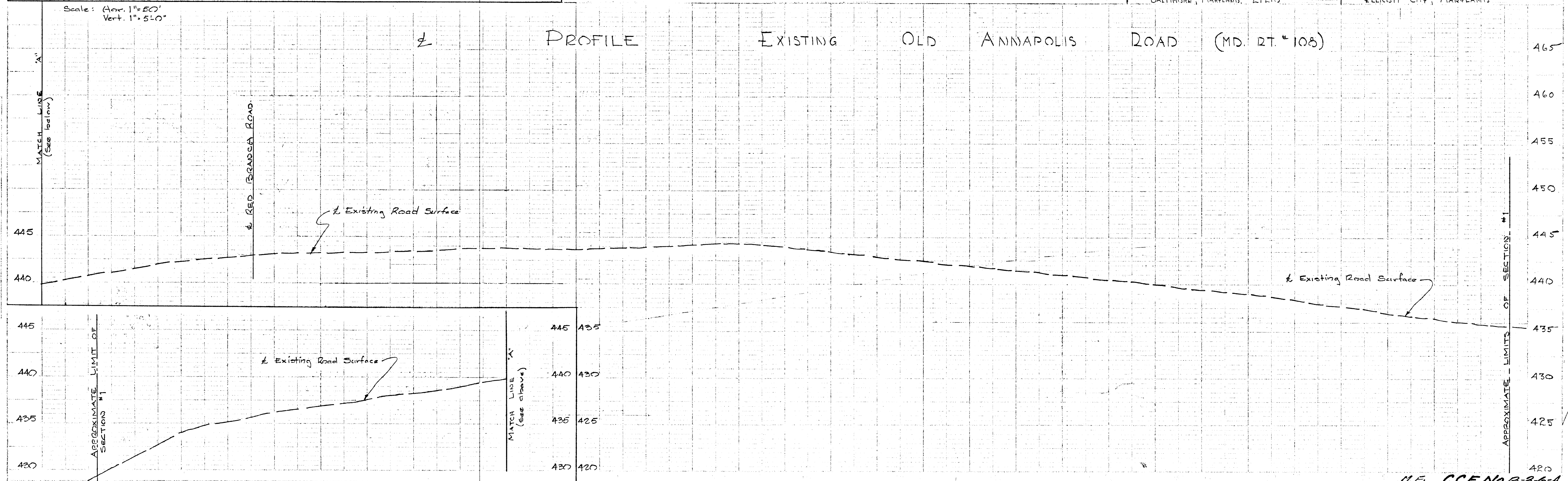


SECTION I
 STORM DRAIN DETAILS & PROFILE OF RTE # 108
 OAKLAND RIDGE INDUSTRIAL PARK
COLUMBIA

SECOND ELECTION DISTRICT HOWARD COUNTY, MARYLAND
 APR. 11 1966
 OCTOBER 1966
 SHEET 4 OF 6
 SCALE: AS SHOWN

THE HOWARD RESEARCH AND DEVELOPMENT CORP.
 THE VILLAGE OF CROSS KEYS
 BALTIMORE, MARYLAND, 21210

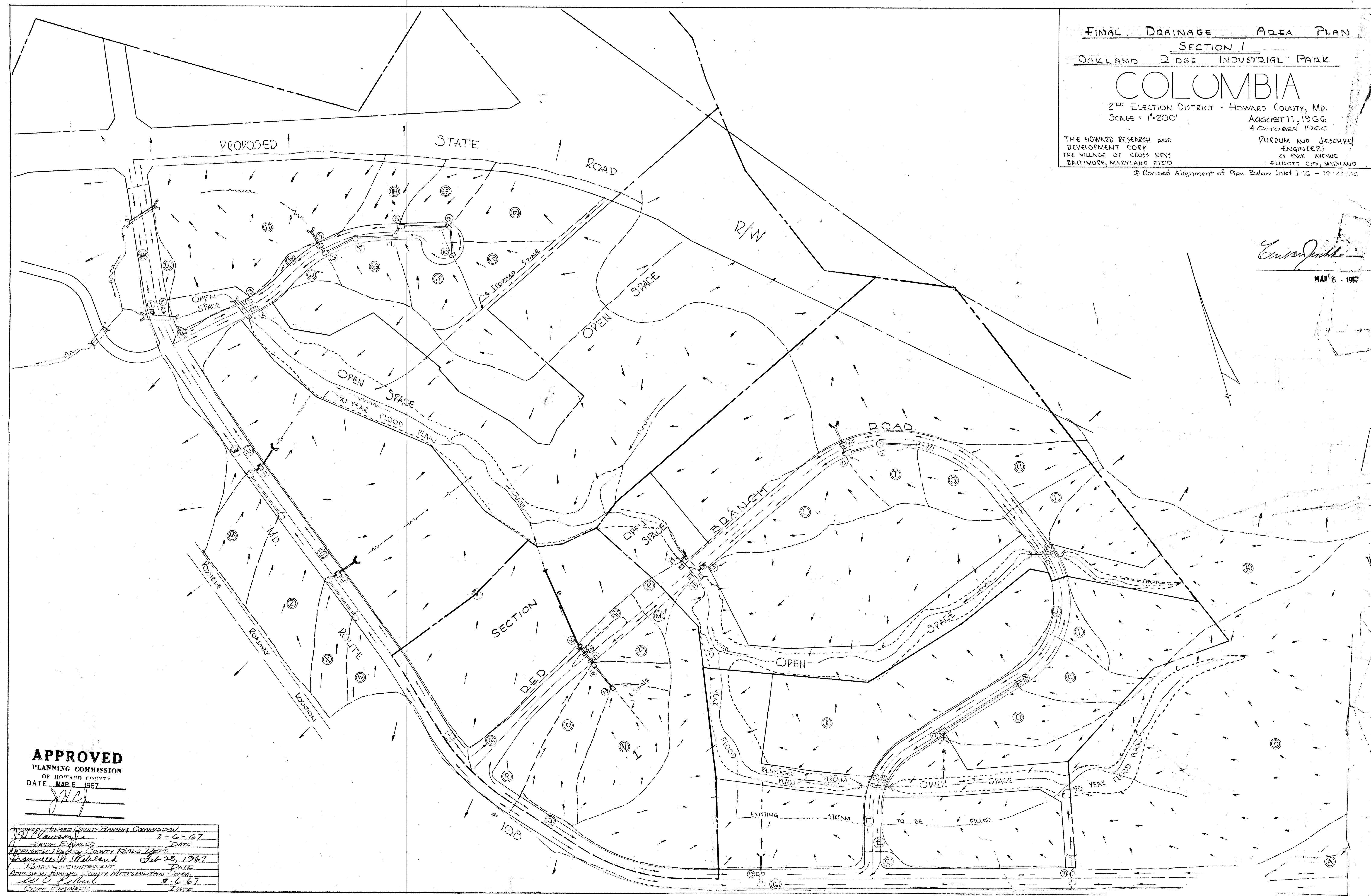
PUDDUM & JESCHKE
 ENGINEERS & LAND SURVEYORS
 24 PARK AVENUE
 ELLICOTT CITY, MARYLAND



CRP 25
 #64

FINAL DRAINAGE AREA PLAN
 SECTION I
 OAKLAND RIDGE INDUSTRIAL PARK
COLUMBIA
 2ND ELECTION DISTRICT - HOWARD COUNTY, MD.
 SCALE: 1"=200'
 AUGUST 11, 1966
 4 OCTOBER 1966
 THE HOWARD RESEARCH AND DEVELOPMENT CORP.
 THE VILLAGE OF CROSS KEYS
 BALTIMORE, MARYLAND 21210
 PURDOM AND JESCHKE ENGINEERS
 24 PARK AVENUE
 ELLICOTT CITY, MARYLAND
 © Revised Alignment of Pipe Below Inlet I-1C - 12/1/66

Purdom and Jeschke
 MAR 6 1967



APPROVED
 PLANNING COMMISSION
 OF HOWARD COUNTY
 DATE: MAR 6 1967

APPROVED: HOWARD COUNTY PLANNING COMMISSION	DATE: 3-6-67
<i>J. H. Clavon</i>	DATE:
SENIOR ENGINEER	DATE:
APPROVED: HOWARD COUNTY ROADS DEPT.	DATE: Oct 28, 1967
<i>Lawrence M. Wilford</i>	DATE:
ROADS SUPERINTENDENT	DATE:
APPROVED: HOWARD COUNTY METROPOLITAN COMM.	DATE: 3-6-67
<i>W. O. Gilbert</i>	DATE:
CHIEF ENGINEER	DATE:

CRP25
 #164

CCF
 No. 5-3-6
 250' B
 F-17-37

APPROVED: HOWARD COUNTY PLANNING COMM. 3-6-67
J. H. Lawson DATE
 SENIOR ENGINEER
 APPROVED: HOWARD COUNTY ROADS DEPT. Feb 20, 1967
Lawrence W. McNeal DATE
 ROADS SUPERINTENDENT
 APPROVED: HOWARD COUNTY METROPOLITAN COMM. 3-6-67
W. F. Albert DATE
 CHIEF ENGINEER

APPROVED
 PLANNING COMMISSION
 OF HOWARD COUNTY
 DATE MAR 6 1967

Edward J. Juchka
 MAR 6 - 1967



PURDUM & JESCHKE
 ENGINEERS & LAND SURVEYORS
 24 PARK AVE
 ELLICOTT CITY, MARYLAND

CRP 25
 #64

For details of I-16 & Roadway
 see sheet 2 of 4; for profile of
 pipe, sheet 3 of 4.

PLAN SHOWING
 EXTENSION OF STORM DRAIN
 PIPE THRU LOT #2 - SECTION #1
 "OAKLAND RIDGE INDUSTRIAL PARK"
 SHEET #6 of 6