

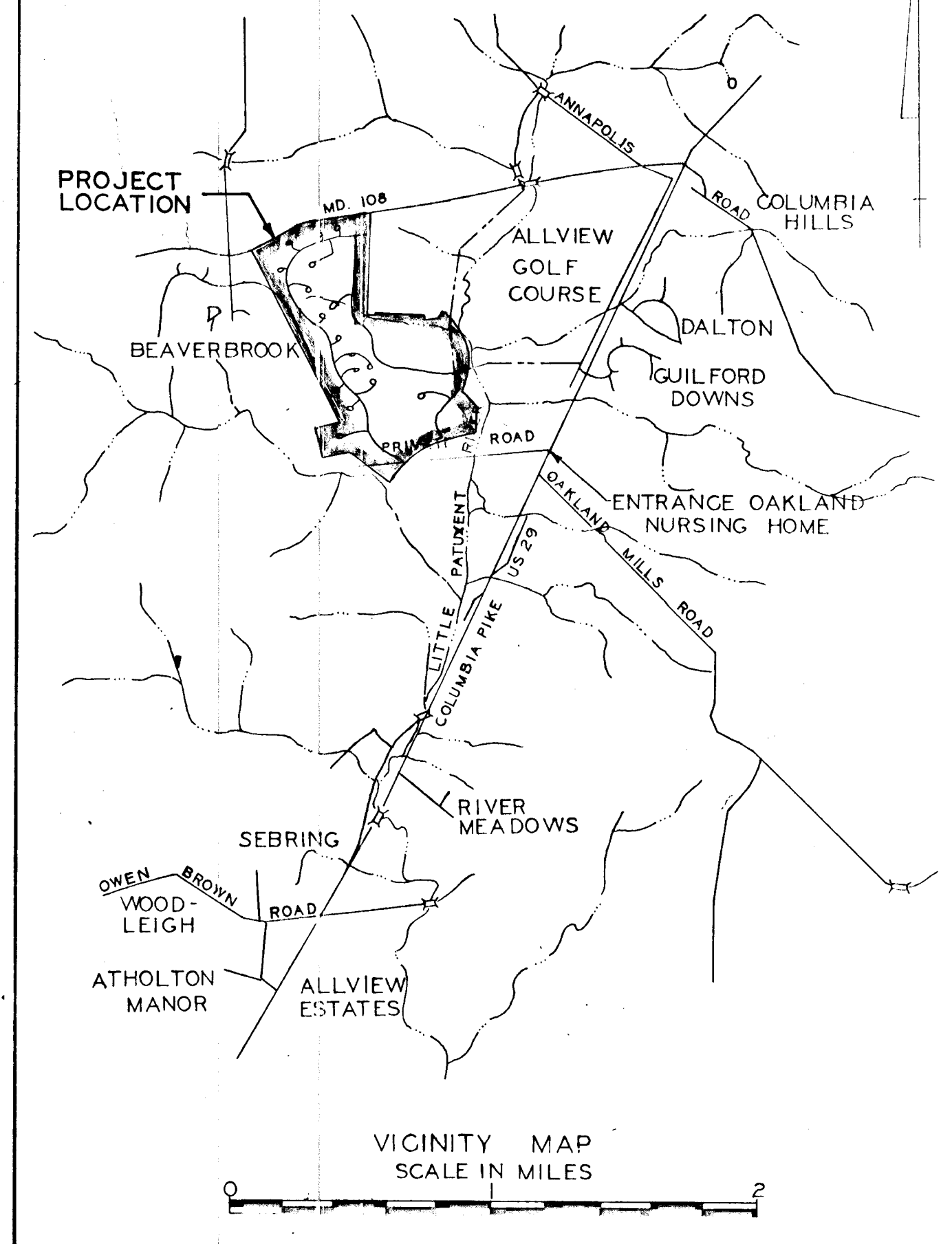
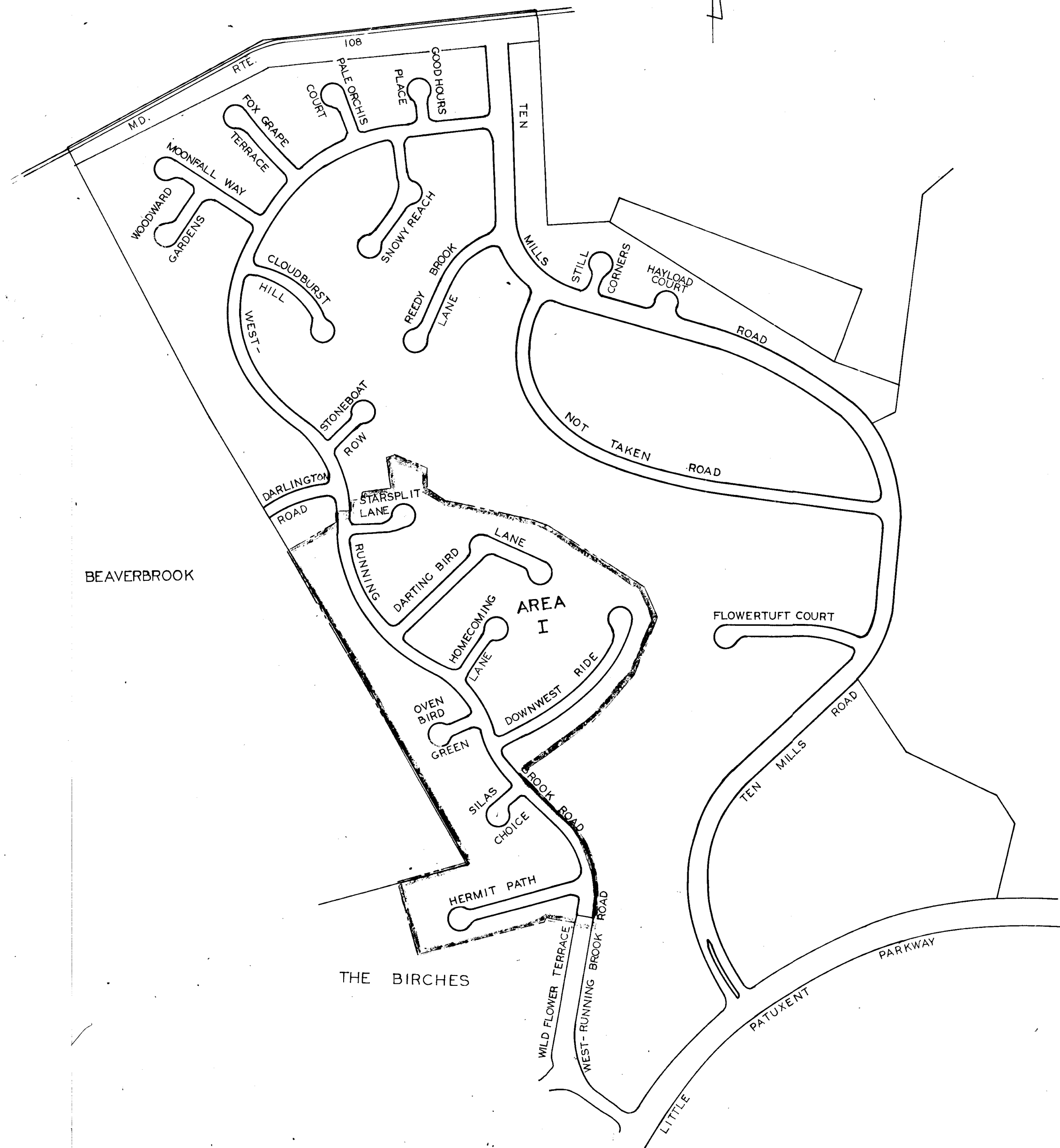
# COLUMBIA

ELECTION DISTRICT 5

## VILLAGE OF WILDE LAKE SECTION 9-RUNNING BROOK AREA 1

HOWARD COUNTY, MARYLAND

JUNE 14, 1967



INDEX

STREET NAME	DRAWING NO.
TITLE	1
WEST-RUNNING BROOK ROAD	2-3
HERMIT PATH	4
SILAS CHOICE	4
DOWNWEST RIDE	5
OVEN BIRD GREEN	6
HOMECOMING LANE	6
DARTING BIRD LANE	7
STARSPILT LANE	7
STORM DRAINS	8-9
DETAIL SHEET	10

REVISED: JULY 27, 1967

HOWARD COUNTY PLANNING COMMISSION

HOWARD COUNTY ROADS DEPARTMENT

HOWARD COUNTY METROPOLITAN COMMISSION

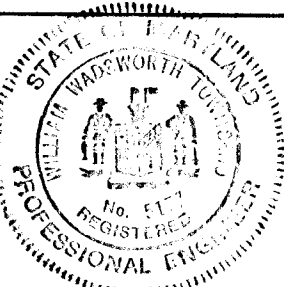
*W. O. P. Hunt* 12-1-67  
SENIOR ENGINEER DATE  
*W. O. P. Hunt* 12-1-67  
ROAD SUPT. DATE  
*W. O. P. Hunt* 12-1-67  
CHIEF ENGINEER DATE

CONSOER, TOWNSEND & ASSOCIATES  
CONSULTING ENGINEERS

OAKLAND MANOR COLUMBIA, MARYLAND

*William W. Townsend*  
WILLIAM W. TOWNSEND P.E. 5177  
REGISTERED PROFESSIONAL ENGINEER

June 14, 1967  
DATE

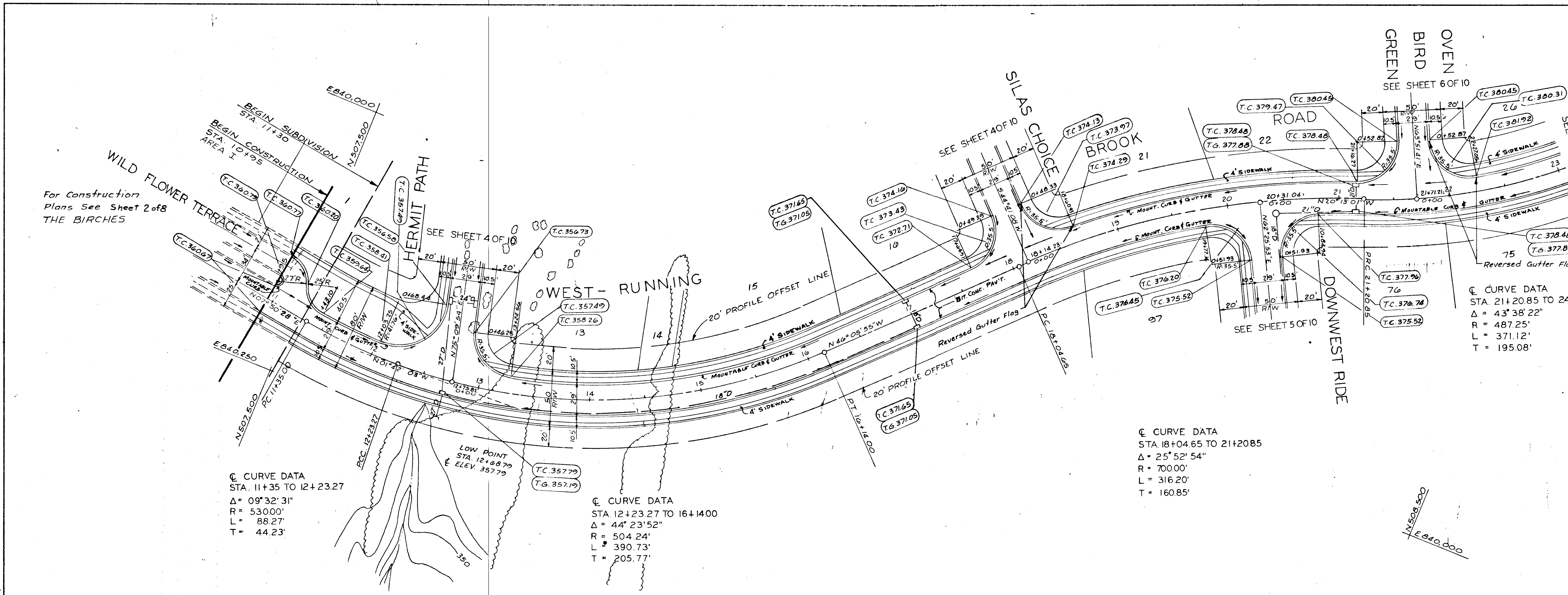


MAP LAYOUT  
SCALE: 1"=400'

HOWARD RESEARCH &  
DEVELOPMENT CORPORATION  
VILLAGE OF CROSS KEYS  
BALTIMORE, MARYLAND 21210

DATE	
BY	
REVISIONS	
NO.	
DATE	
BY	
REVISIONS	
NO.	
DATE	
BY	
REVISIONS	
NO.	

DATE	
BY	
REVISIONS	
NO.	
DATE	
BY	
REVISIONS	
NO.	
DATE	
BY	
REVISIONS	
NO.	



GRID NORTH

**APPROVED**  
PLANNING COMMISSION  
DATE: 12-7-67  
*J. W. J.*

7/27/67	Revised Grade on WEST-RUNNING BROOK	
Rev Date	Rev No	Revision Description

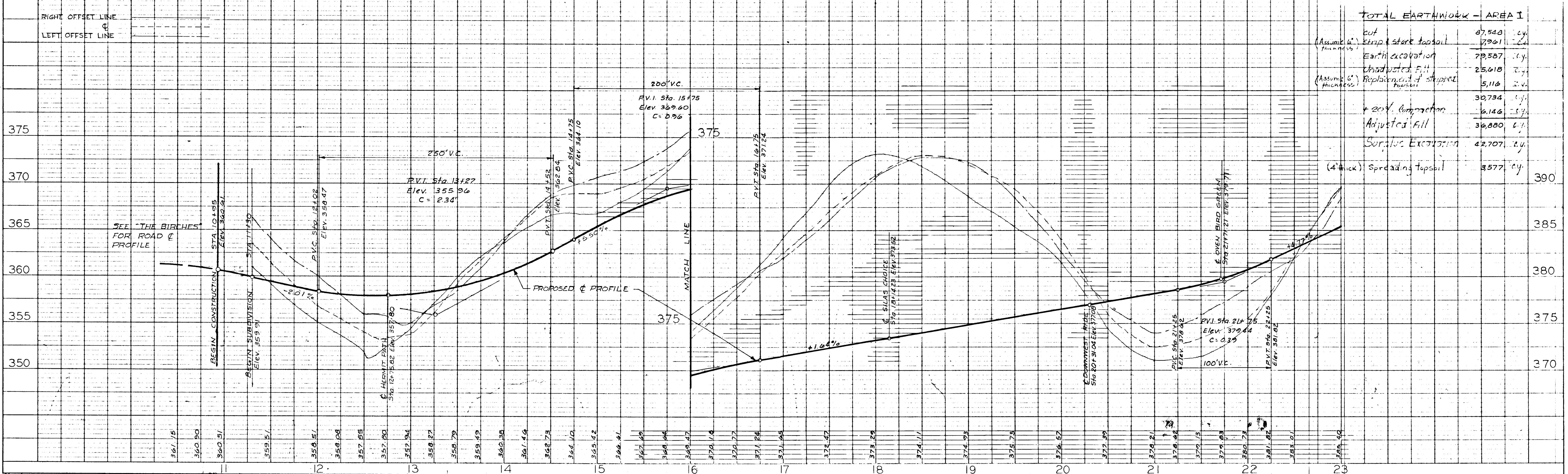
**COLUMBIA**  
MARYLAND

THE ROUSE COMPANY THE VILLAGE OF CROSS KEYS,  
BALTIMORE, MARYLAND 21210

PROJECT AREA VILLAGE OF WILDE LAKE  
SECTION 9 - RUNNING BROOK

PROJECT TITLE PAVING PLAN-AREA I  
WEST-RUNNING BROOK

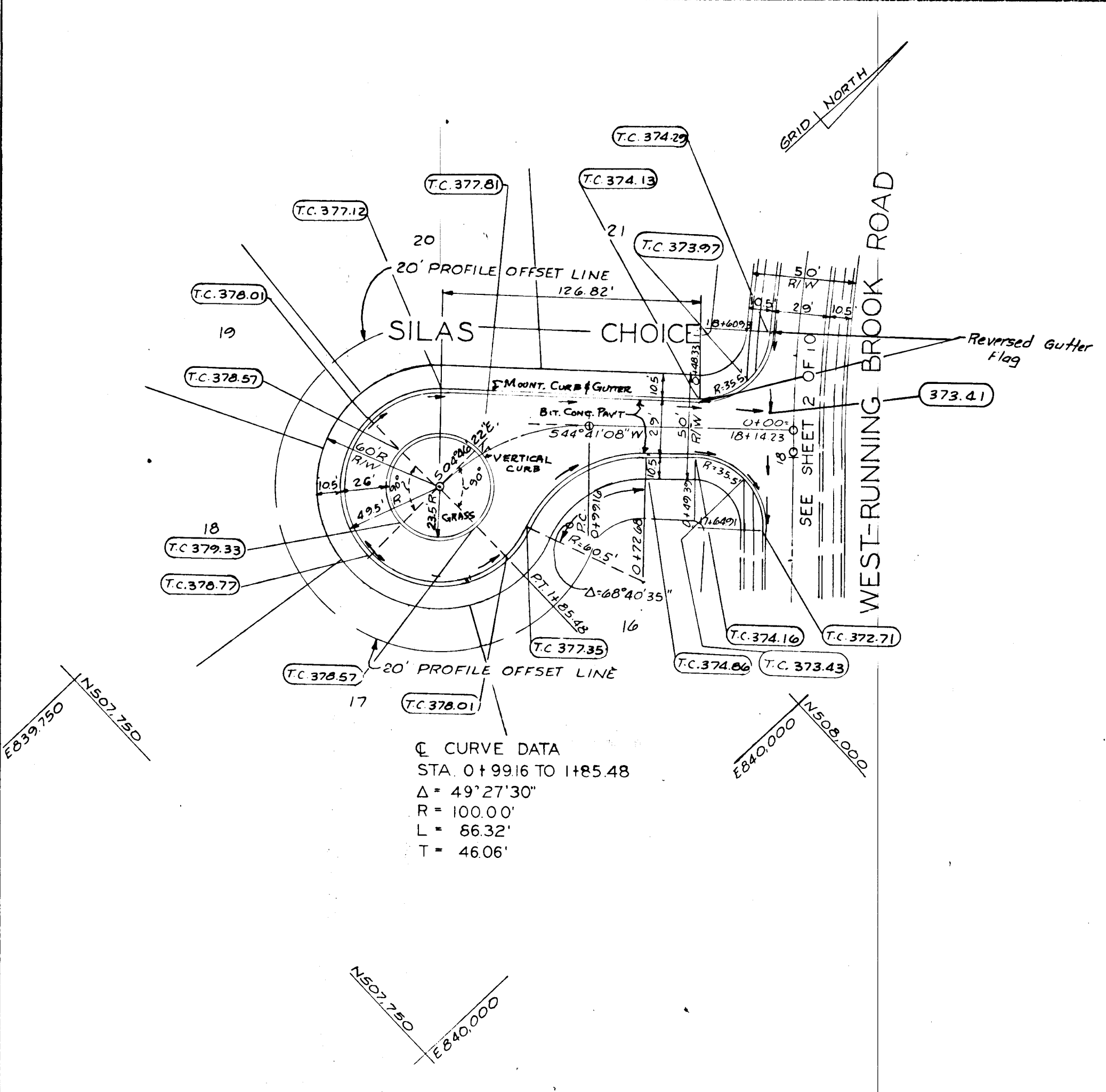
Des By	K.J.S.	Scale	1"=50'	Dwg No	2 of 10
Drn By	J.G.M.	Date	6/14/67	C.C.F. No	
Chk By	P.K.	Approved			



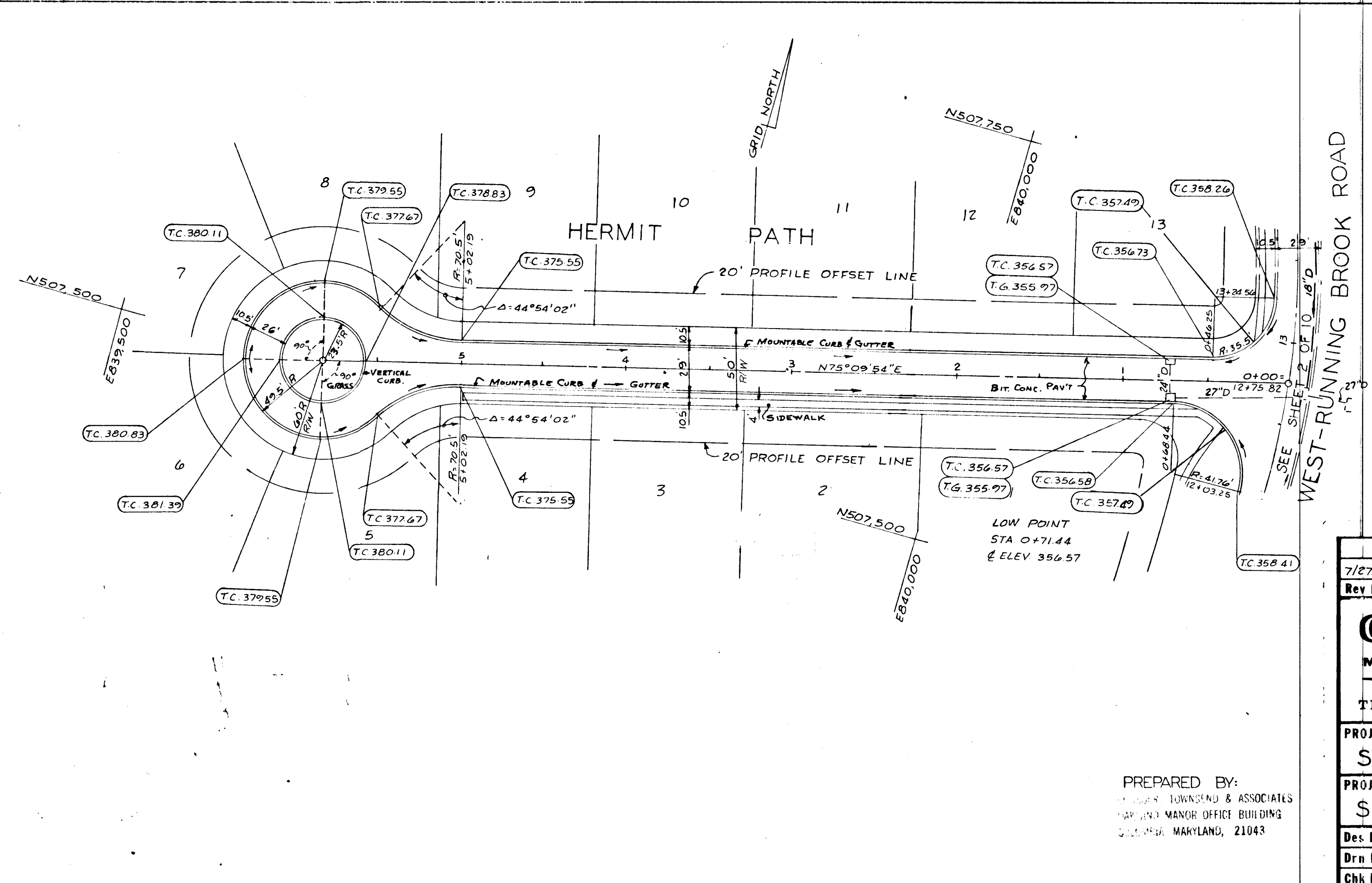
TOTAL EARTHWORK - AREA I

cut	87,548	cu
(Assume 6" strip stake topsoil)	7,901	cu
Earth excavation	79,587	cu
Unadjusted Fill	25,618	cu
(Assume 6" monobase)	1,116	cu
Replacement of strip stake	30,734	cu
+ 20% compaction	6,146	cu
Adjusted Fill	36,880	cu
Surface Excavation	42,707	cu
(4" thick) Spreading topsoil	3,577	cu
	390	
	385	
	380	
	375	
	370	

DATE	
BY	
DESIGNED	
CHECKED	
DATE	
BY	
DATE	
BY	



CURVE DATA  
 STA. 0+99.16 TO 1+85.48  
 $\Delta = 49^\circ 27' 30''$   
 $R = 100.00'$   
 $L = 66.32'$   
 $T = 46.06'$

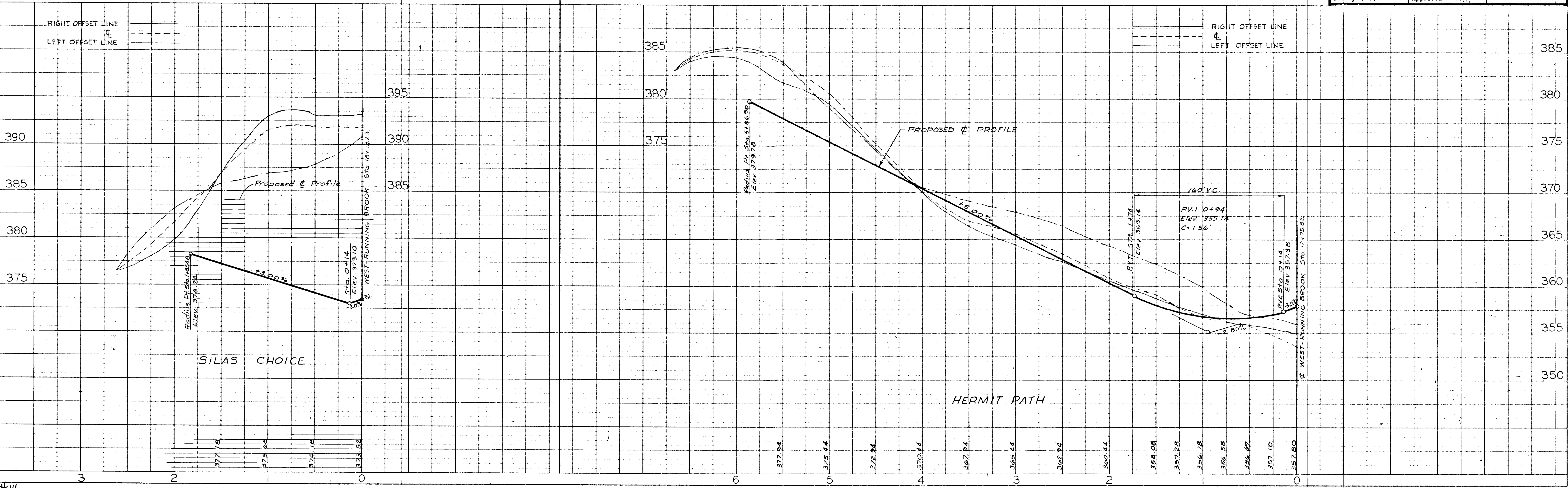


APPROVED  
 PLANNING COMMISSION  
 OF HOWARD COUNTY  
 DATE 12-1-67  
 J. J. [Signature]

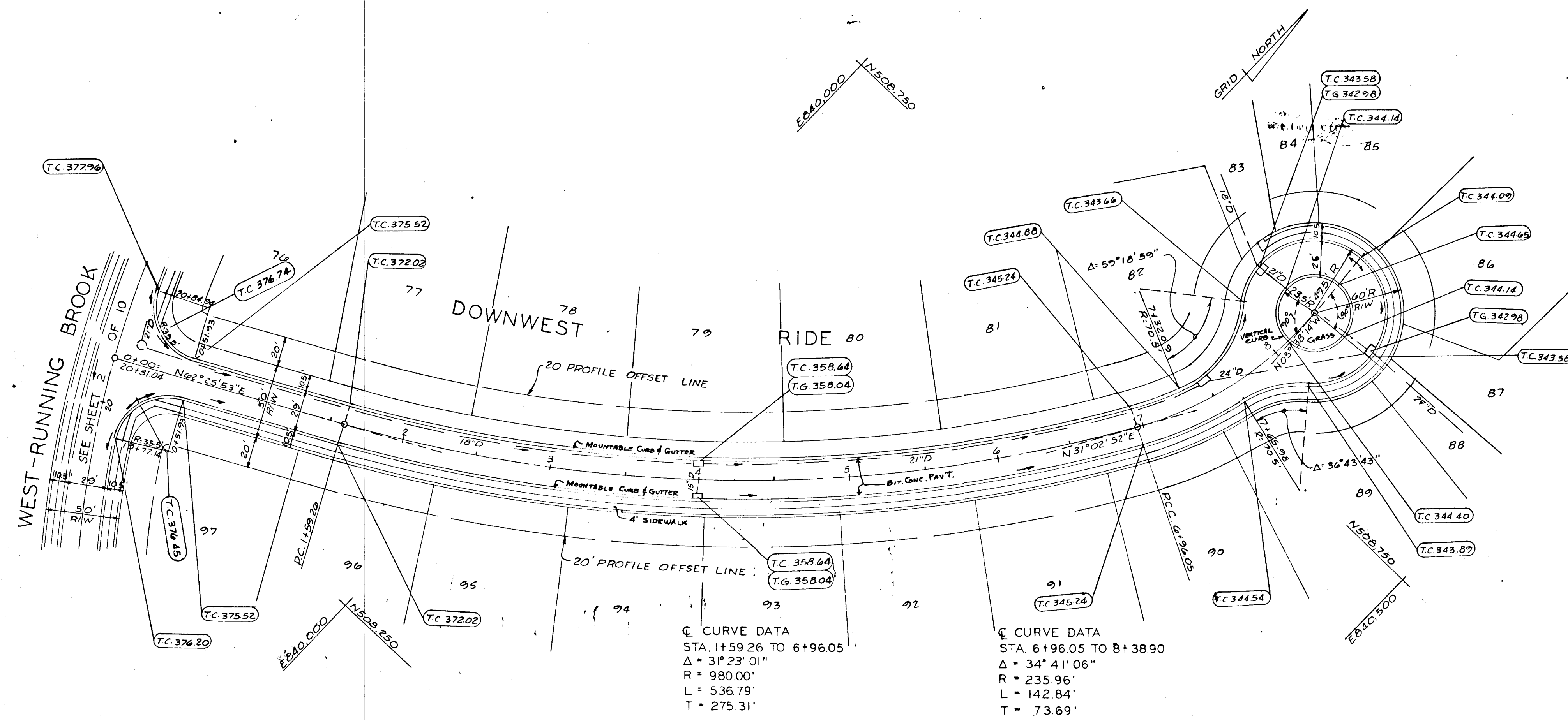
7/27/67	1	Revised Grade on SILAS CHOICE
Rev Date	Rev No	Revision Description
<b>COLUMBIA</b>		
MARYLAND		
THE ROUSE COMPANY THE VILLAGE OF CROSS KEYS, BALTIMORE, MARYLAND 21210		
PROJECT AREA VILLAGE OF WILDE LAKE SECTION 9 - RUNNING BROOK		
PROJECT TITLE PAVING PLAN-AREA I SILAS CHOICE - HERMIT PATH		
Des By K.J.S.	Scale 1"=50'	Dwg No 4 of 10
Drn By J.G.M.	Date 6/14/67	C.C.F. No
Chk By P.K.	Approved [Signature]	

PREPARED BY:  
 ROUSE BOWLING & ASSOCIATES  
 1000 MANOR OFFICE BUILDING  
 COLLEGE PARK, MARYLAND, 21043

DATE	
BY	
DESIGNED	
CHECKED	
DATE	
BY	
DATE	
BY	



DATE	
BY	
REVISIONS	
NO.	
PLANNED	
PLOTTED	
ALIGNMENT CHECKED	
NO. OF WAY CHECKED	
NO.	

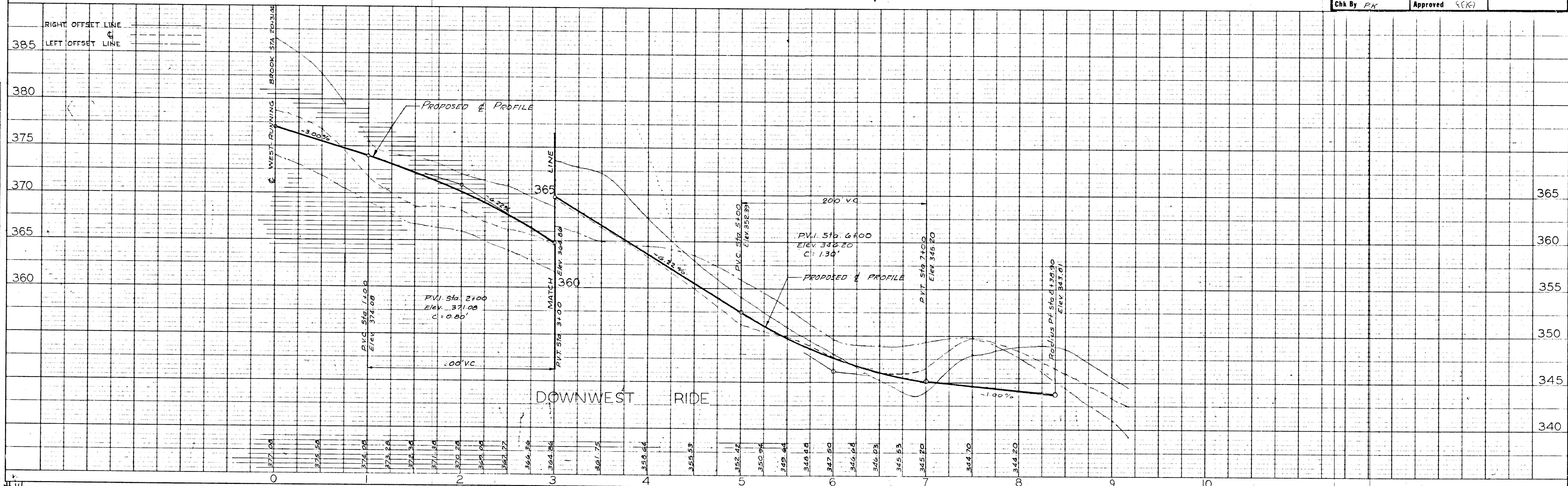


APPROVED  
 PLANNING COMMISSION  
 OF BOWEN COUNTY  
 DATE 12-1-67  
*J. J. J.*

7/27/67	Revised Grade on Downwest Ride		
Rev Date	Rev No	Revision Description	
<b>COLUMBIA</b> M A R Y L A N D			
THE ROUSE COMPANY THE VILLAGE OF CROSS KEYS, BALTIMORE, MARYLAND 21210			
PROJECT AREA VILLAGE OF WILDE LAKE SECTION 9-RUNNING BROOK			
PROJECT TITLE PAVING PLAN-AREA I DOWNWEST RIDE			
Des By	K.J.S.	Scale 1"=50'	Dwg No 7 of 10
Drn By	J.G.M.	Date 6/14/67	C.C.F. No
Chk By	PK	Approved	(Signature)

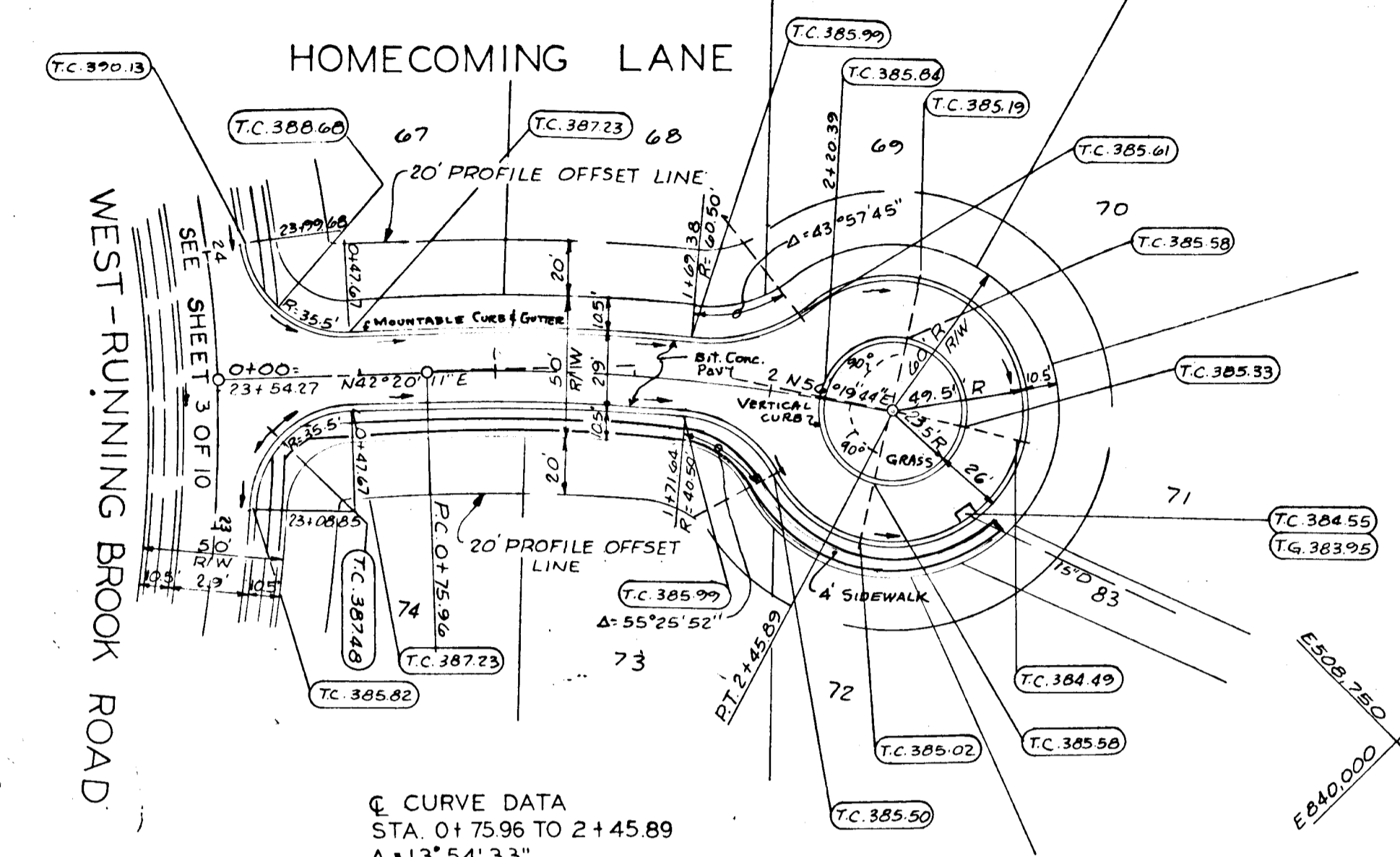
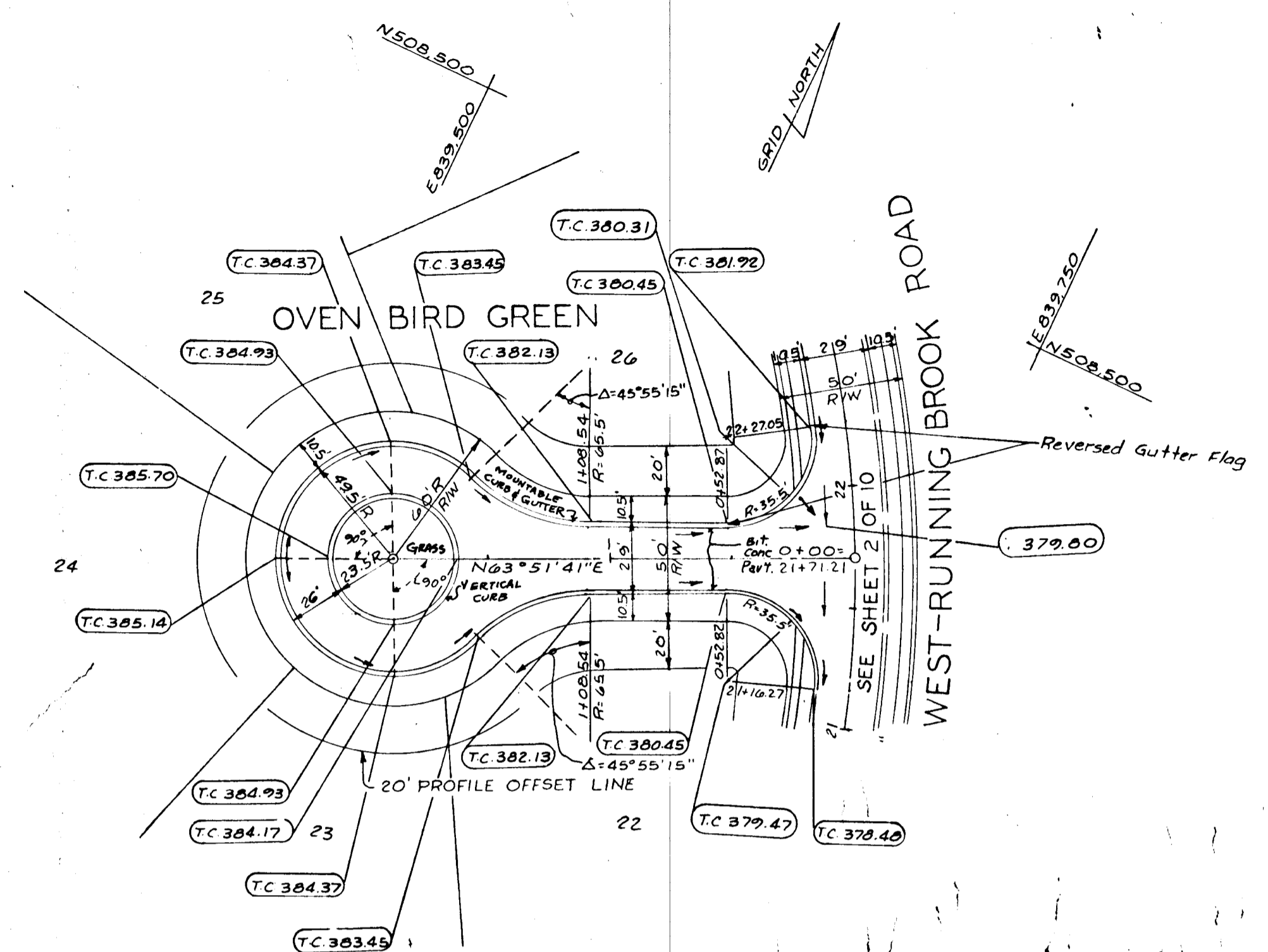
PREPARED BY:  
 CONSOER, TOWNSEND & ASSOCIATES  
 OAKLAND MANOR OFFICE BUILDING  
 COLUMBIA, MARYLAND, 21043

DATE	
BY	
REVISIONS	
NO.	
PLANNED	
PLOTTED	
ALIGNMENT CHECKED	
NO. OF WAY CHECKED	
NO.	



PLAN  
 SURVEYED, PLOTTED, PLotted, CHECKED, RT. OF WAY CHECKED, NOTE BOOK, NO.

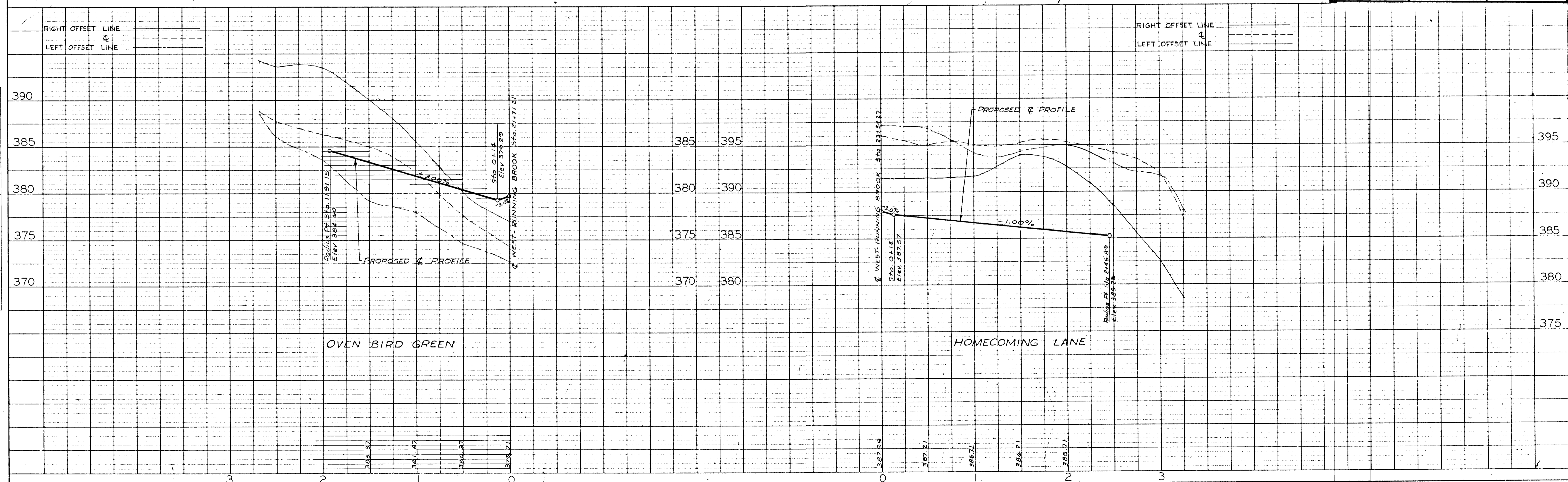
PROFILE  
 SURVEYED, PLOTTED, PLOTTED, CHECKED, STRUCTURE NOTATIONS CHECKED, NOTE BOOK, NO.

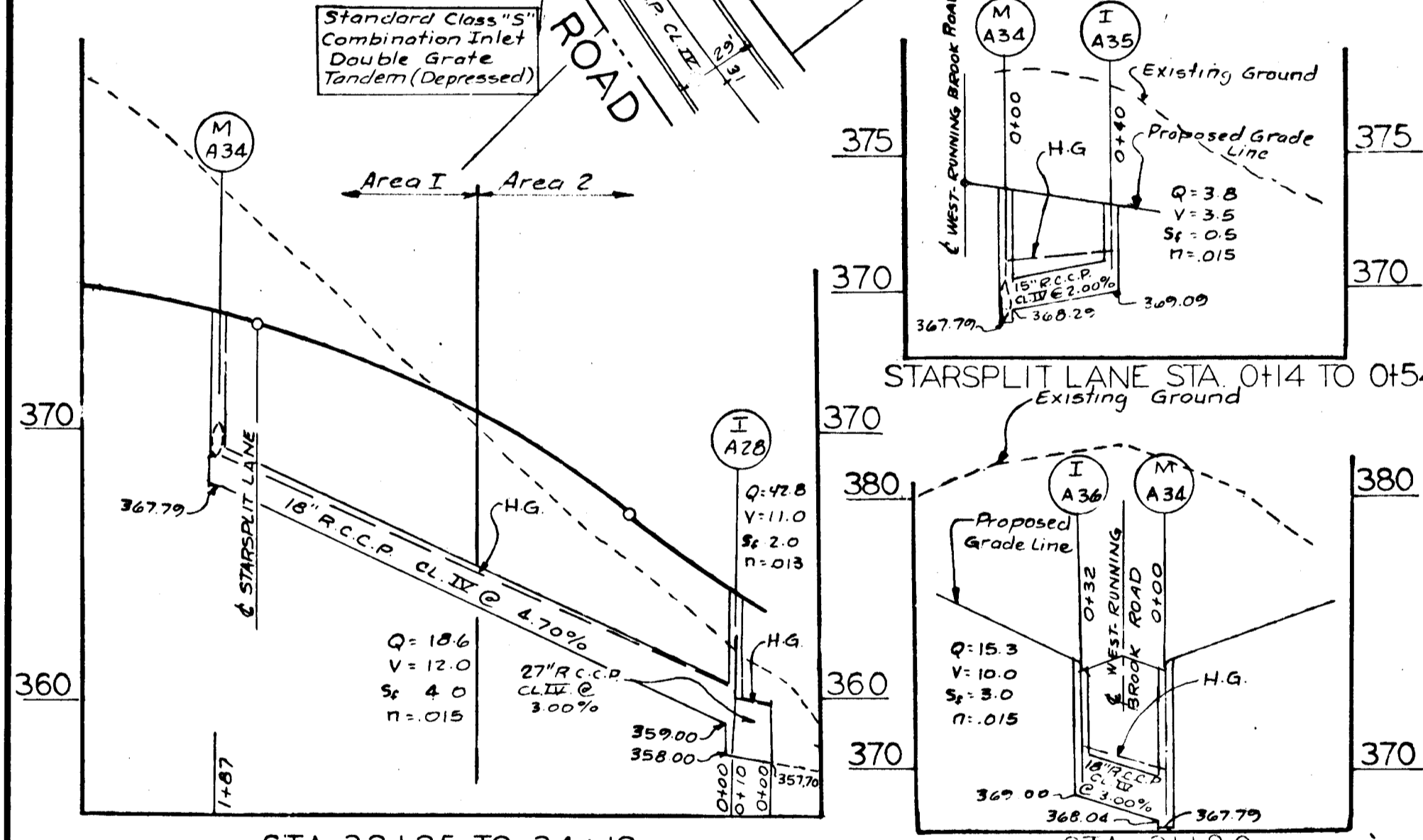
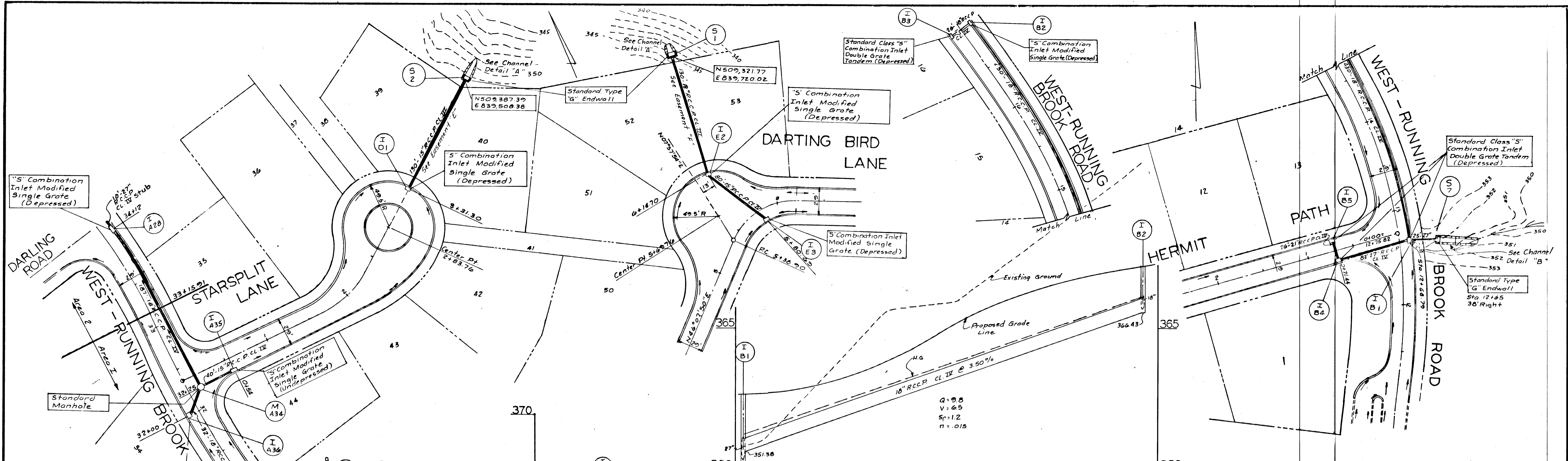


Q CURVE DATA  
 STA. 0+75.96 TO 2+45.89  
 $\Delta = 135^\circ 54' 33''$   
 $R = 700.00'$   
 $L = 169.93'$   
 $T = 85.39'$

APPROVED  
 PLANNING COMMISSION  
 OF MONTGOMERY COUNTY  
 DATE 12-1-67  
*J. J. [Signature]*

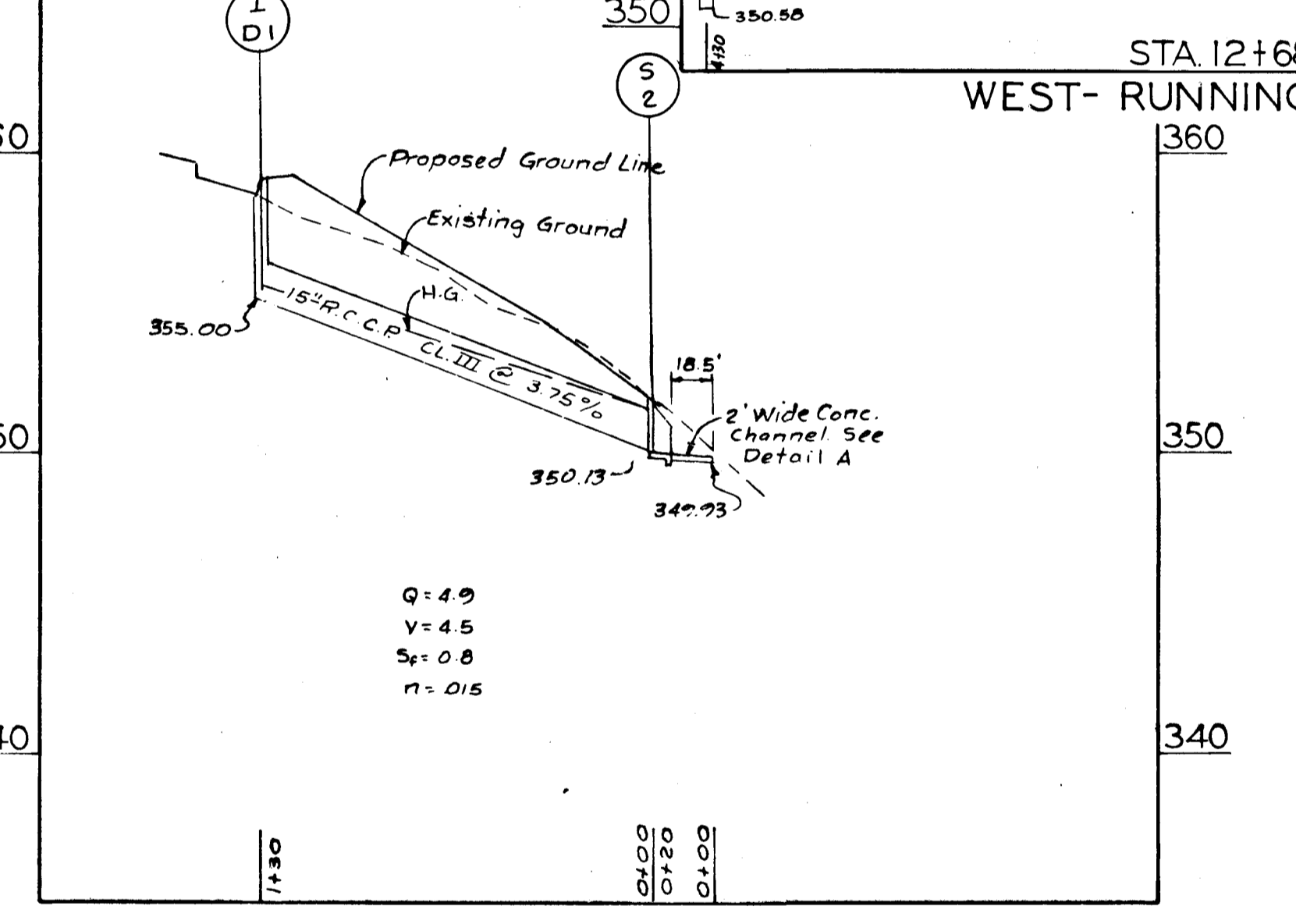
7/27/67	Revised Grade on OVEN BIRD GREEN
Rev Date	Revision Description
<b>COLUMBIA</b>	
M A R Y L A N D	
THE ROUSE COMPANY THE VILLAGE OF CROSS KEYS, BALTIMORE, MARYLAND 21210	
PROJECT AREA VILLAGE OF WILDE LAKE SECTION 9-RUNNING BROOK	
PROJECT TITLE PAVING PLAN-AREA I OVEN BIRD GREEN-HOMECOMING LANE	
Des By K.J.S.	Scale 1"=50'
Drn By J.G.M.	Date 6/14/67
Chk By P.K.	Approved (X)



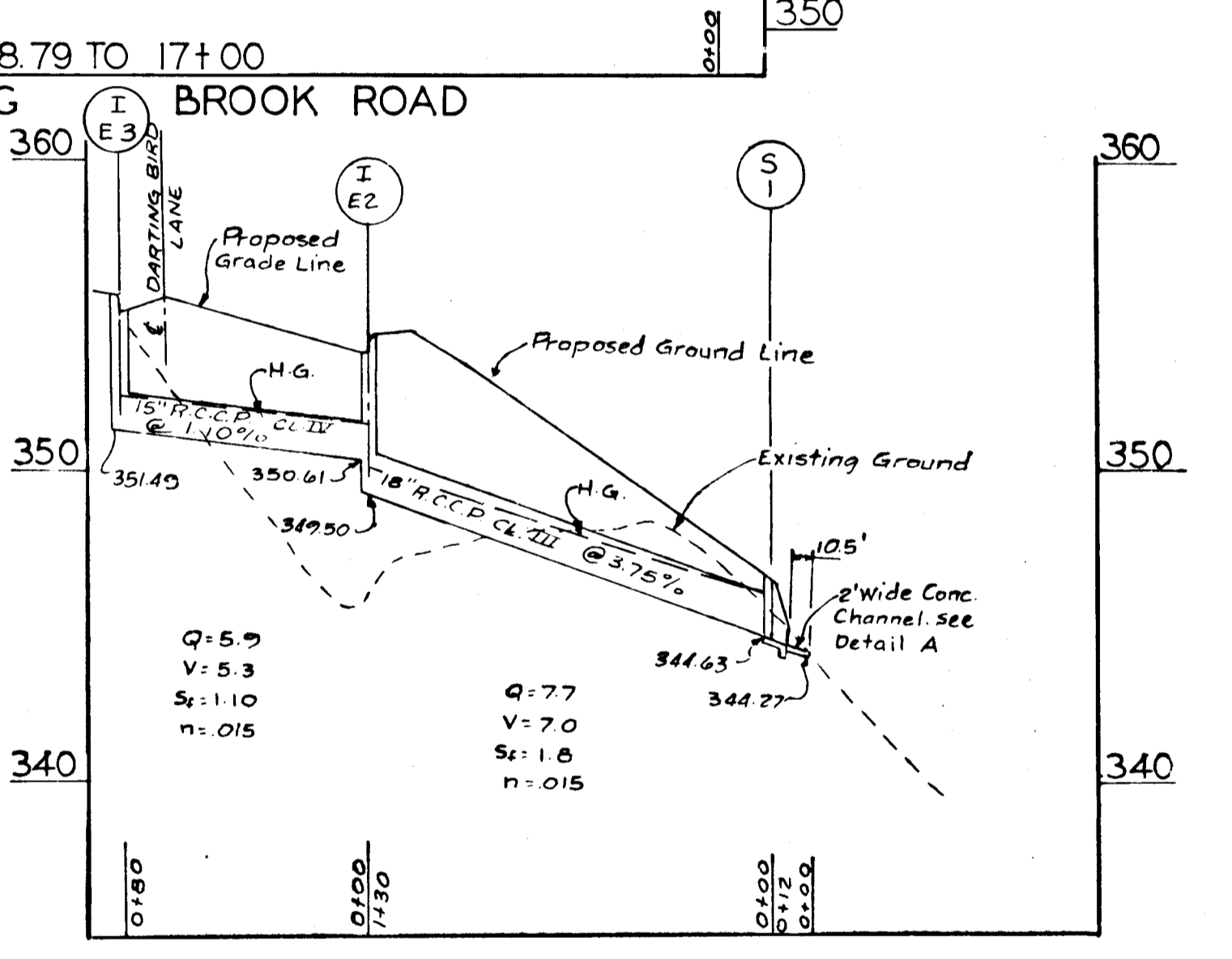


STA. 32+25 TO 34+12  
WEST - RUNNING BROOK ROAD

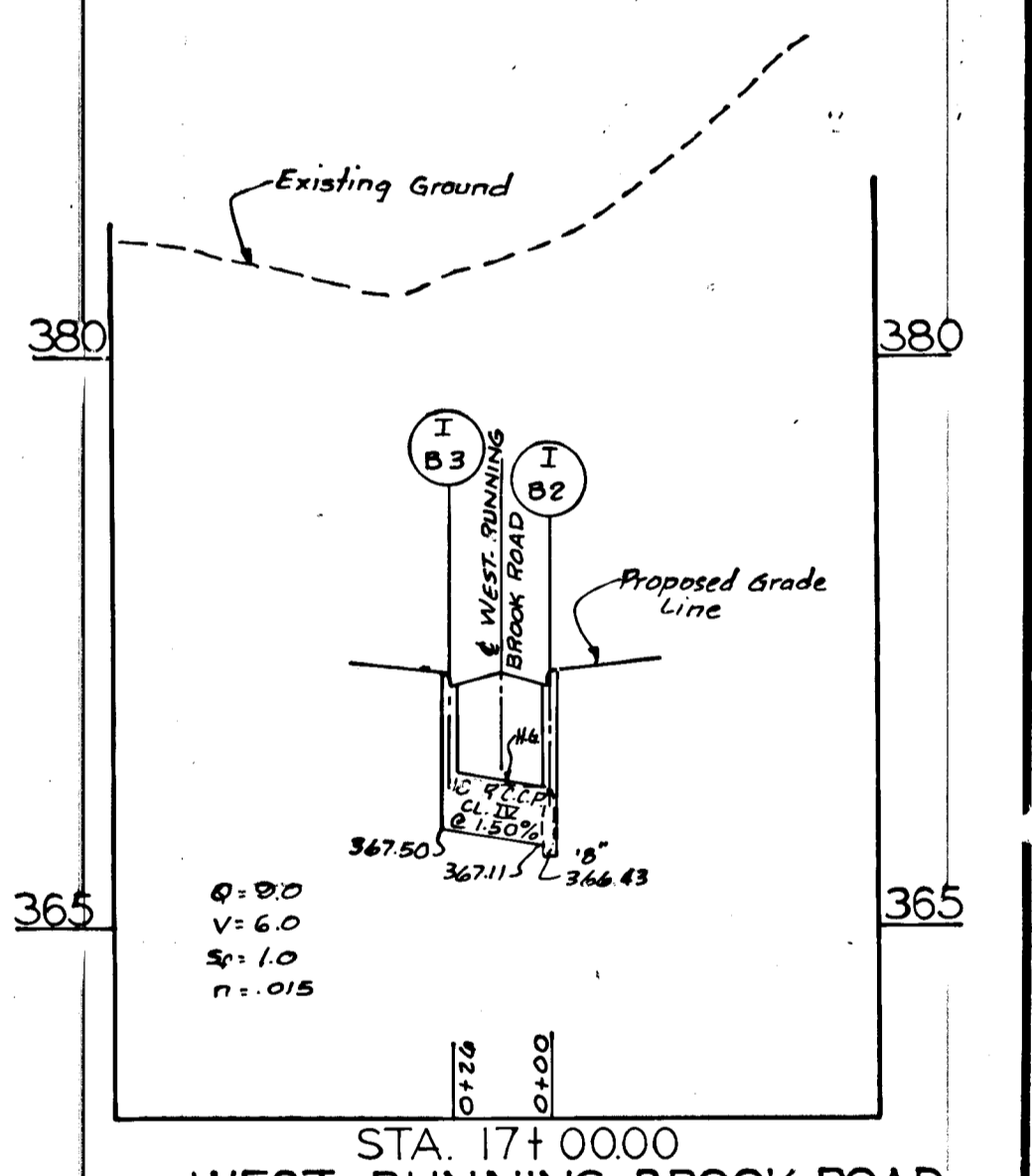
STA. 31+80  
WEST-RUNNING BROOK ROAD



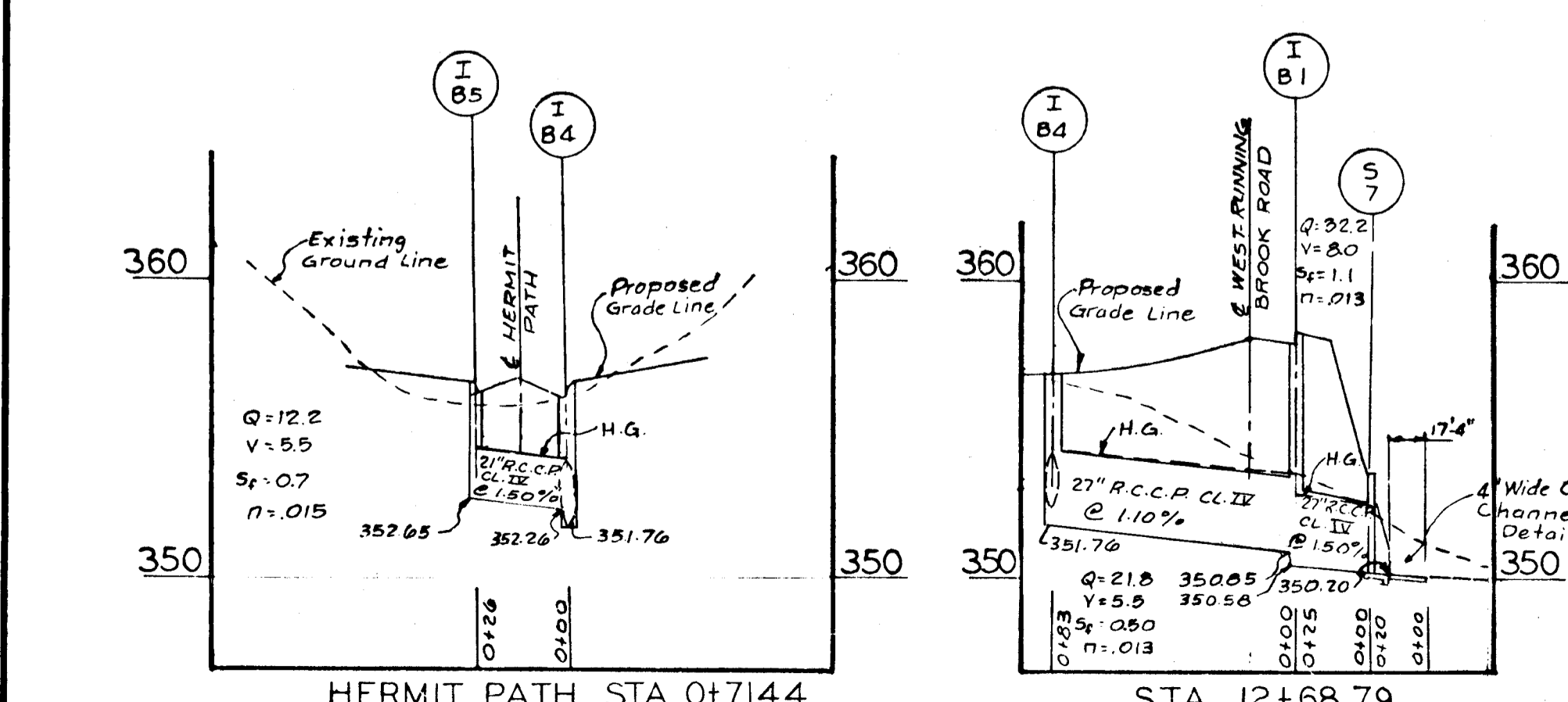
DRAINAGE EASEMENT "E"



DRAINAGE EASEMENT "F"

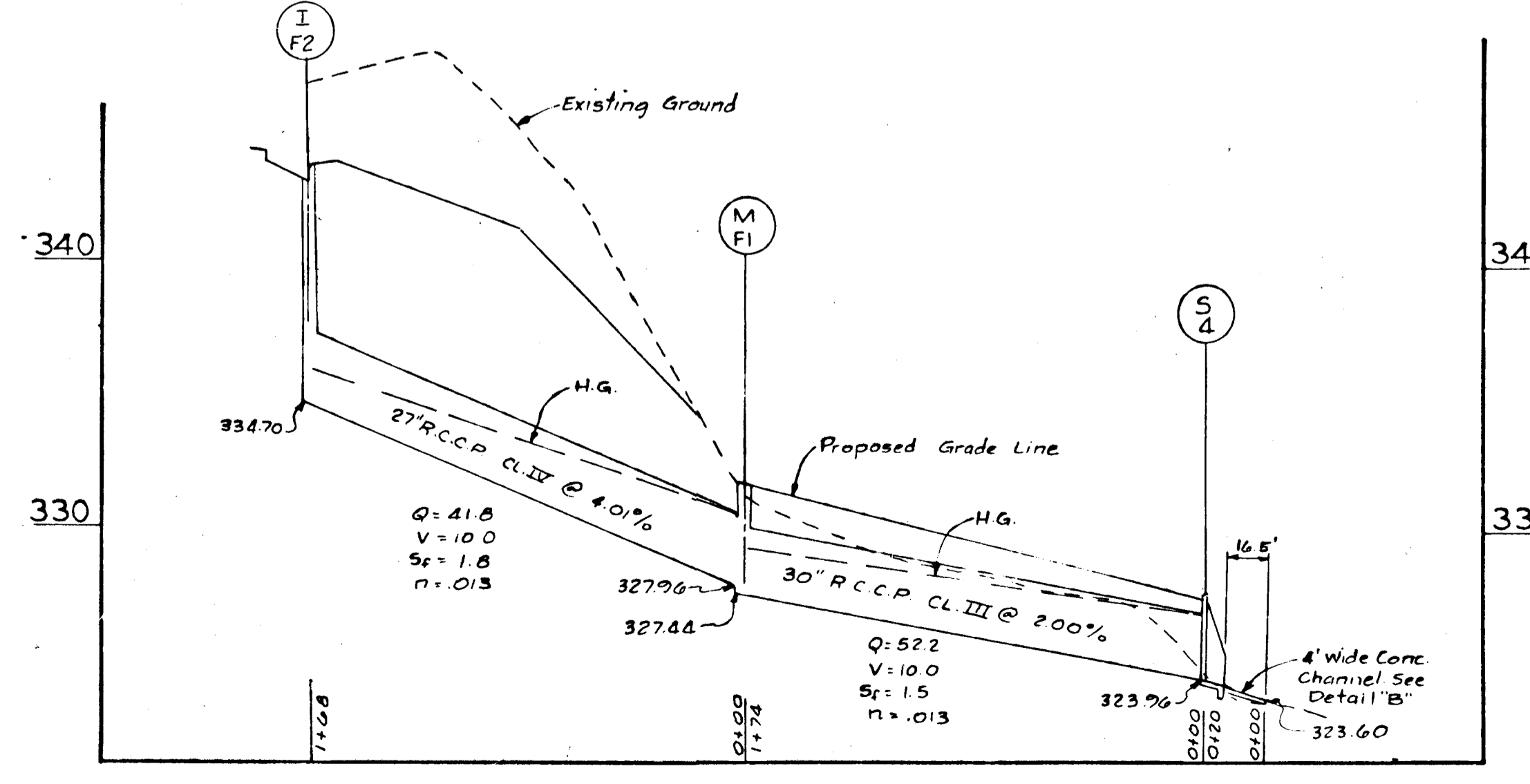


STA. 17+0000  
WEST-RUNNING BROOK ROAD



HERMIT PATH STA. 0+7144

STA. 12+68.79  
WEST-RUNNING BROOK ROAD



DRAINAGE EASEMENT "I"  
(For Plan See Sheet 9 of 10)

Note:  
For construction details other than those shown on sheet 10 of 10, refer to Howard County Road Construction Code and Standard Specification.  
1. For Standard Manhole Drawing D-103 p. 155.  
2. For Class "S" Combination Inlet (Double Gate Tandem) Drawing D-102 p. 157.  
3. For Standard "G" Concrete Headwall Drawing D-61 p. 116.

9/21/67	Revised Drainage Comp. W. Running Brk. Hermit Path	
7/27/67	Revised Drainage on West-Running Brook	
Rev Date	Rev No	Revision Description

APPROVED  
PLANNING COMMISSION  
OF HOWARD COUNTY  
DATE 12-1-67  
*J. J. [Signature]*

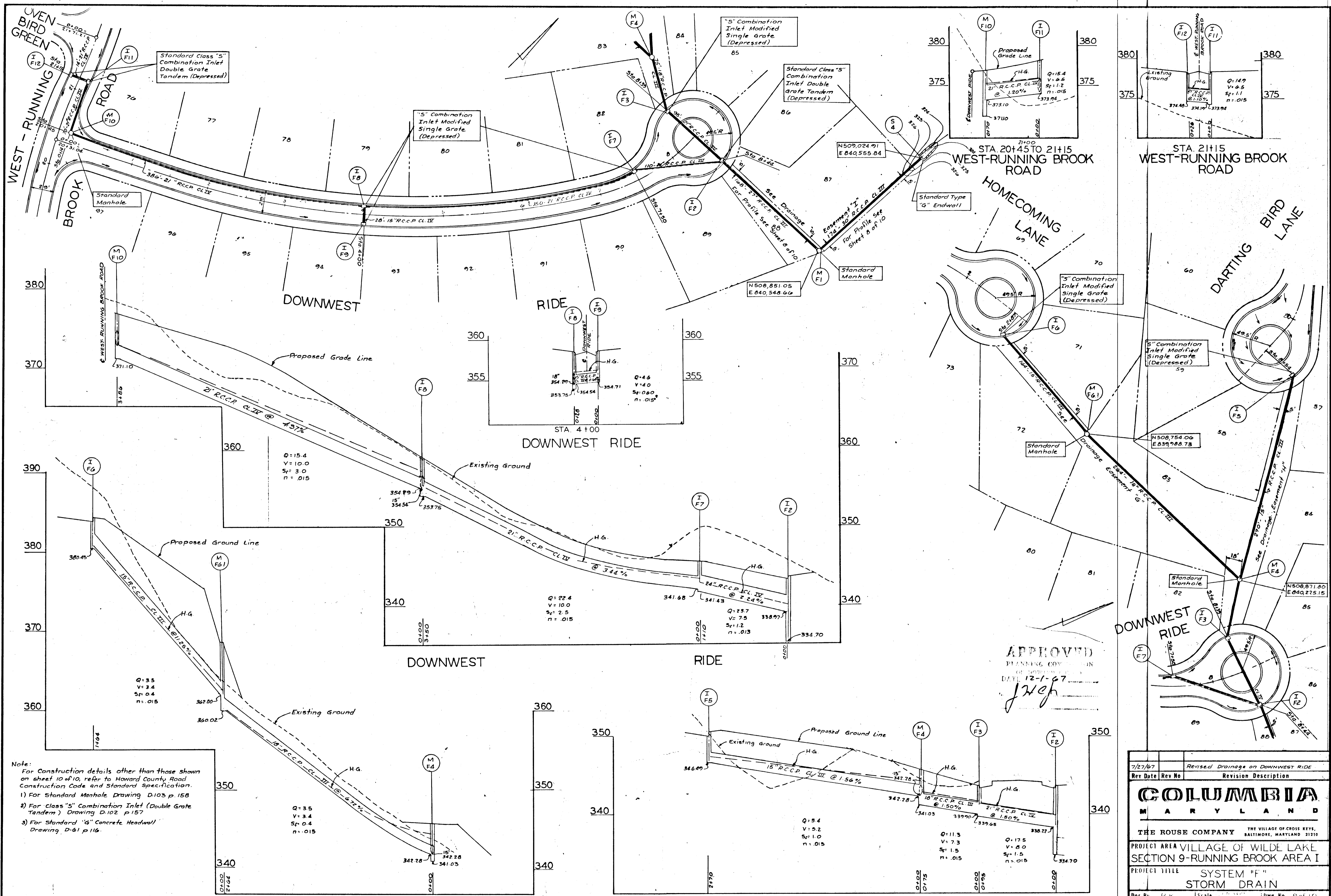
**COLUMBIA MARYLAND**

THE ROUSE COMPANY THE VILLAGE OF CROSS KEYS, BALTIMORE, MARYLAND 21210

PROJECT AREA VILLAGE OF WILDE LAKE  
SECTION 9-RUNNING BROOK AREA I

PROJECT TITLE SYSTEMS "A, B, D, E & F"  
STORM DRAIN

Des By P.K.	Scale 1" = 50' HORIZ 1" = 5' VERT	Dwg No B of 10
Drn By J.G.M.	Dat 6/14/67	C.C.F. No
Chk By D.J.L.	Approved [Signature]	



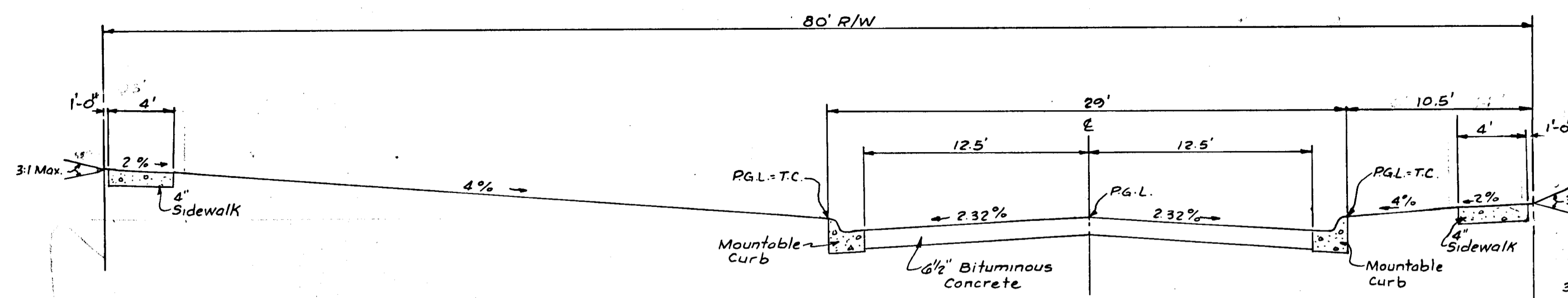
Note:  
 For Construction details other than those shown on sheet 10 of 10, refer to Howard County Road Construction Code and Standard Specification.  
 1) For Standard Manhole Drawing D-103 p. 158  
 2) For class "S" Combination Inlet (Double Grate Tandem) Drawing D-102 p. 157  
 3) For Standard "G" Concrete Headwall Drawing D-61 p. 116.

APPROVED  
 PLANNING COMMISSION  
 DATE 12-1-97  
*J. J. J.*

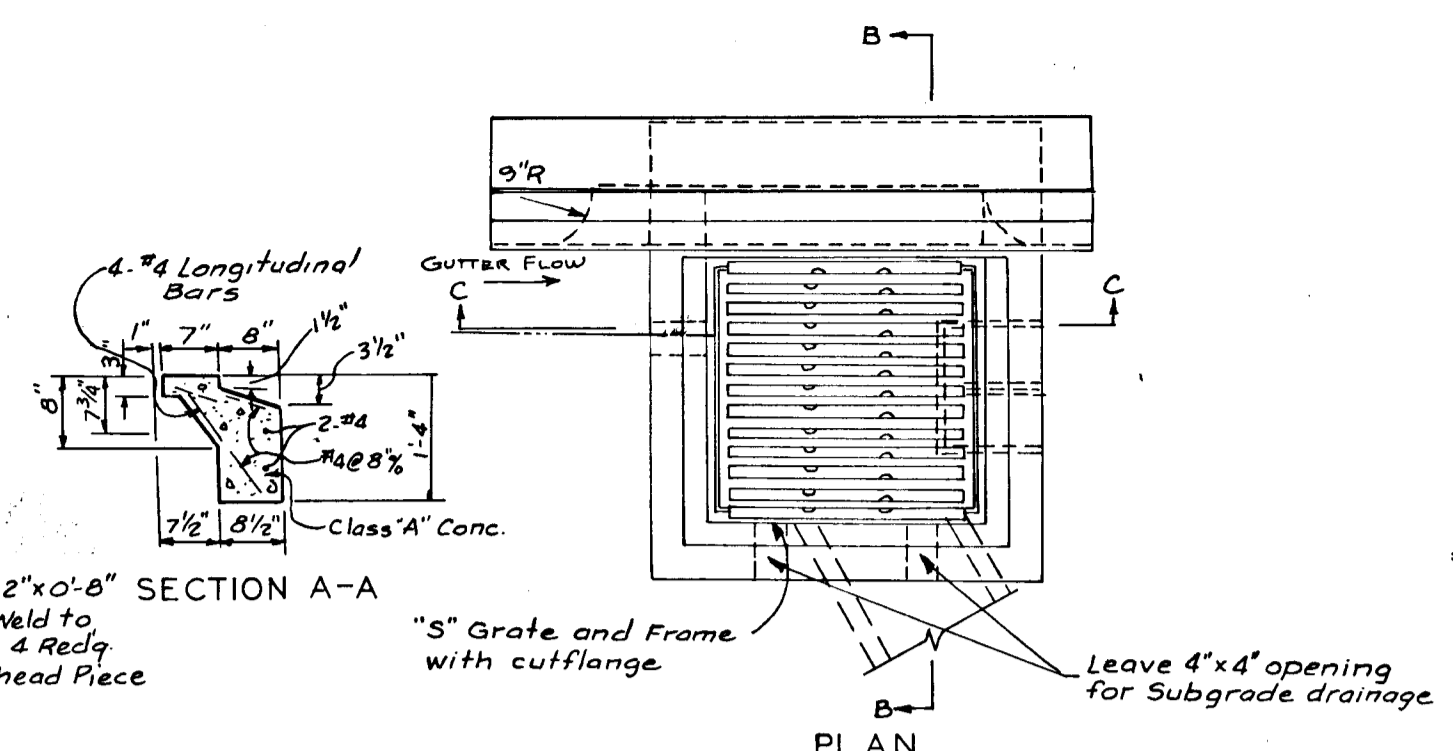
DRAINAGE EASEMENT "G"

DRAINAGE EASEMENT "H"

7/27/97	Revised Drainage on DOWNWEST RIDE
Rev Date	Rev No
	Revision Description
<b>COLUMBIA</b>	
MARYLAND	
THE ROUSE COMPANY THE VILLAGE OF CROSS KEYS, BALTIMORE, MARYLAND 21210	
PROJECT AREA VILLAGE OF WILDE LAKE SECTION 9-RUNNING BROOK AREA I	
PROJECT TITLE SYSTEM "F" STORM DRAIN	
Des By P.K.	Scale 1" = 50' DWG No 9 of 10
Drn By J.G.M.	Date 6/14/97 C.C.F. No
Chk By N.J.L.	Approved E. J. J.

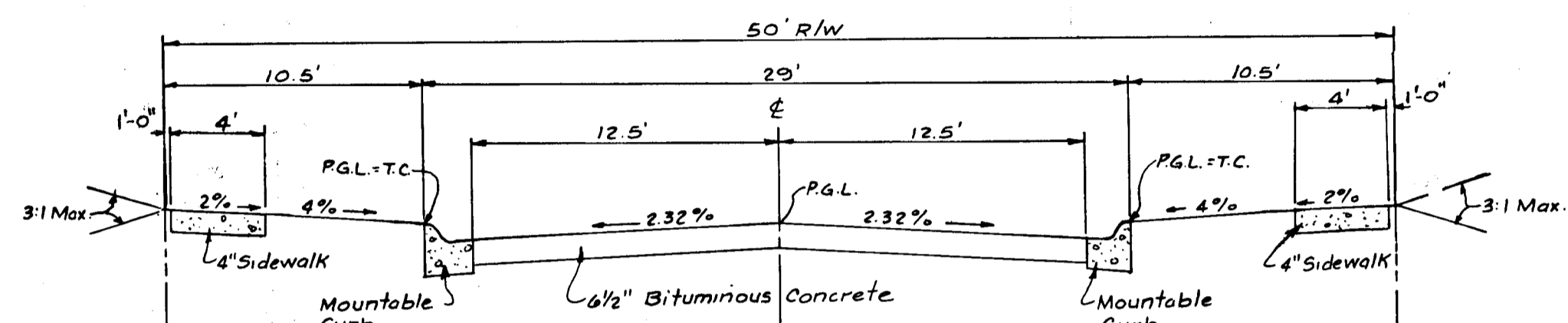


WEST-RUNNING BROOK ROAD  
STA. 11+30.00 TO 12+03.75

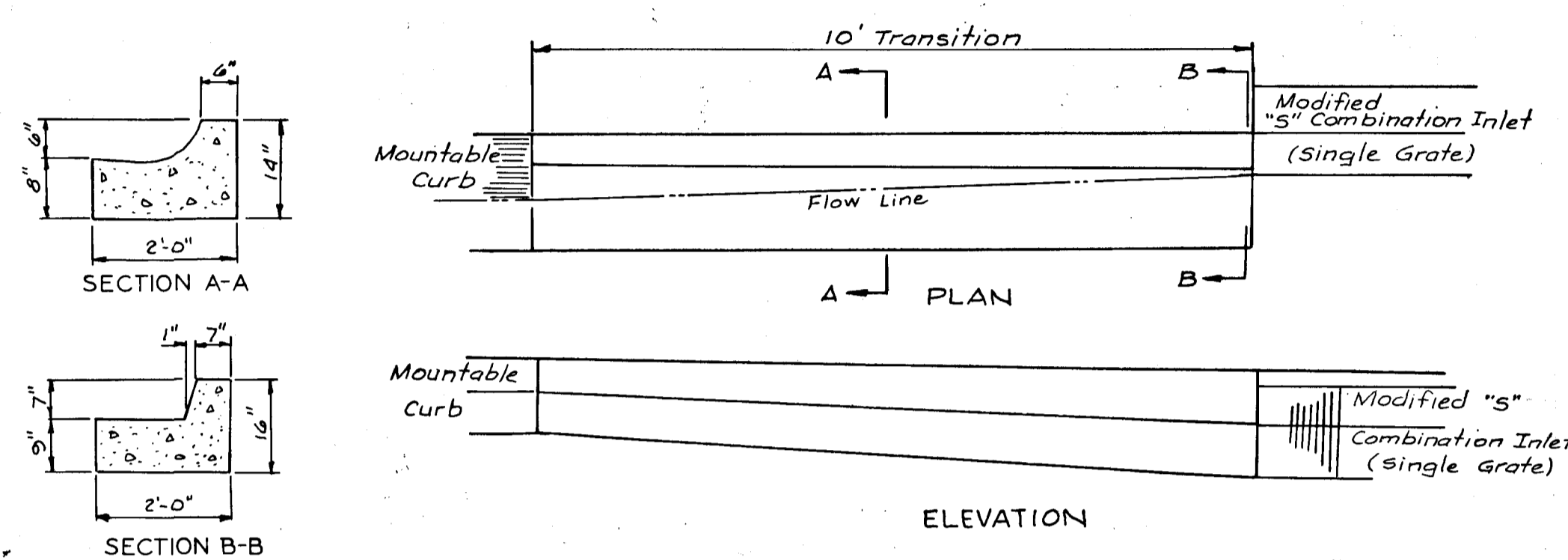


DETAIL MODIFIED "S" COMBINATION INLET (SINGLE GRATE)  
NO SCALE

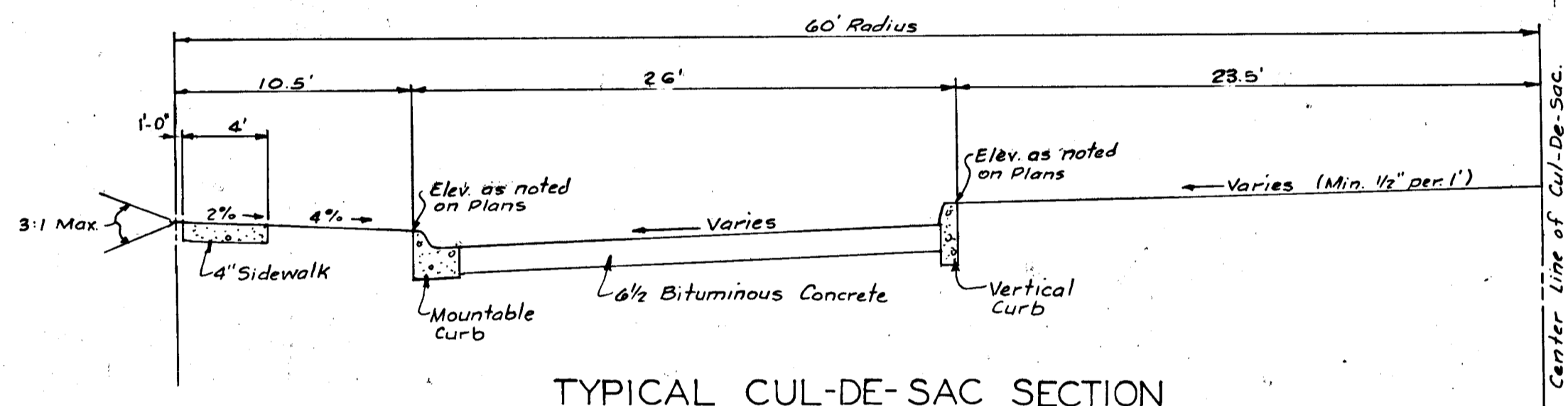
- Notes:
- 1) The walls and Invert shall be brick or reinforced C.I. Concrete.
  - 2) B=8" Where A is 7" or less  
B=12" Where A is 7" to 11".
  - 3) Top 4" of walls shall be brick masonry. Additional brick shall be used to bring the grate to exist grade if required.
  - 4) Where brick is used, Invert shall be brick laid on edge.



NEIGHBORHOOD COLLECTOR

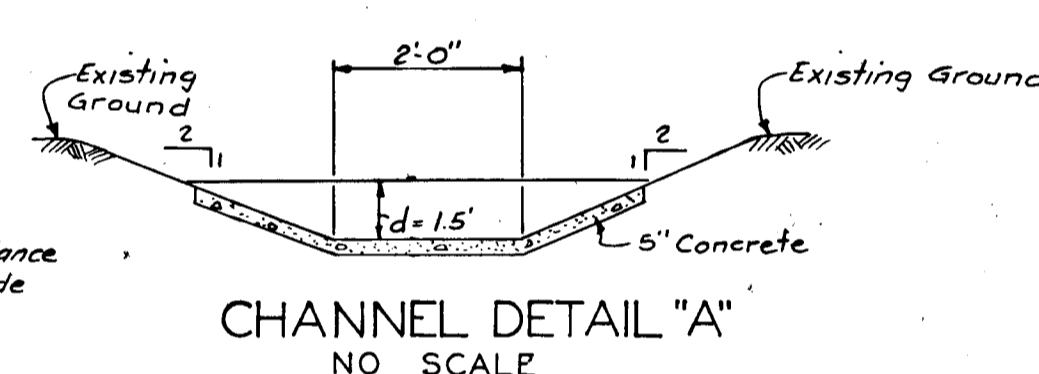


CURB TRANSITION DETAIL  
NO SCALE

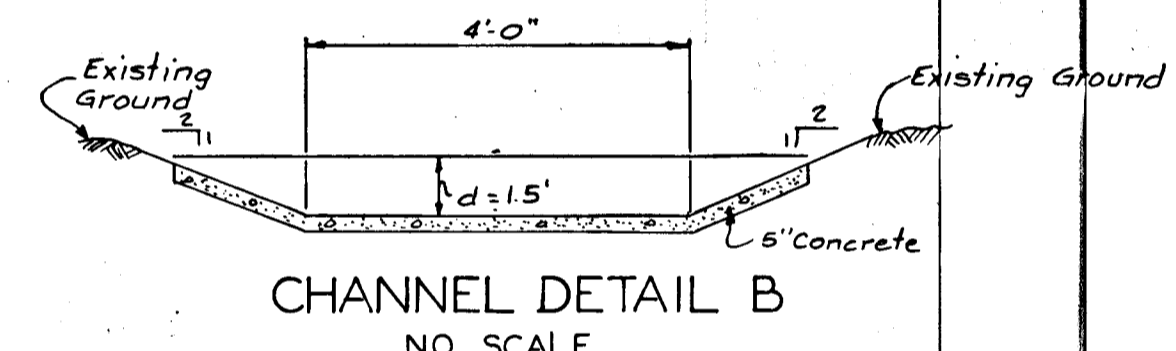


TYPICAL CUL-DE-SAC SECTION

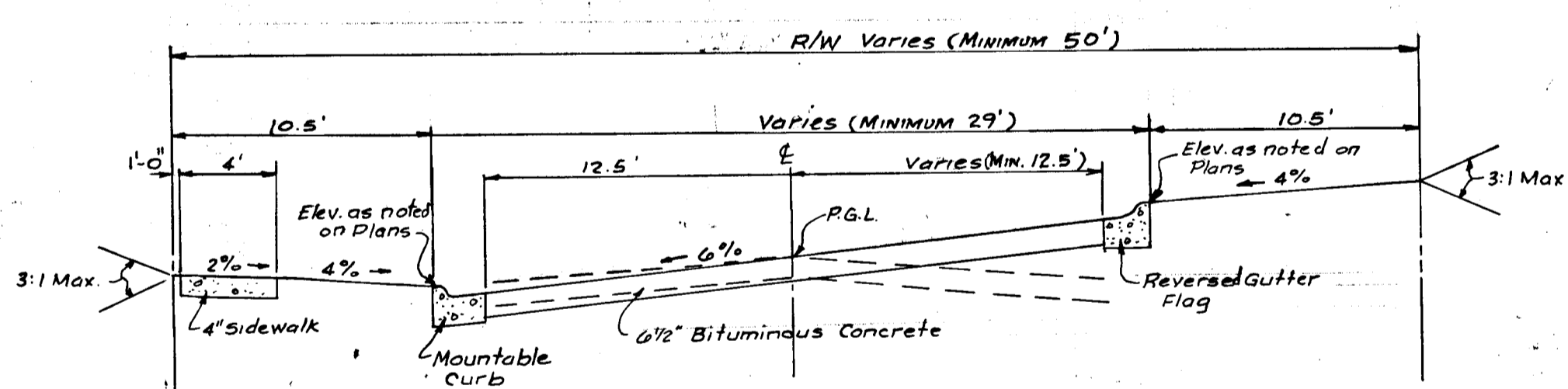
Note:  
5" Bituminous Concrete Base Course  
1 1/2" Bituminous Concrete Surface Course  
This surface type to be constructed in accordance with the Howard County Road Construction Code and Specification Dwg. D114 Page 165d



CHANNEL DETAIL "A"  
NO SCALE



CHANNEL DETAIL B  
NO SCALE

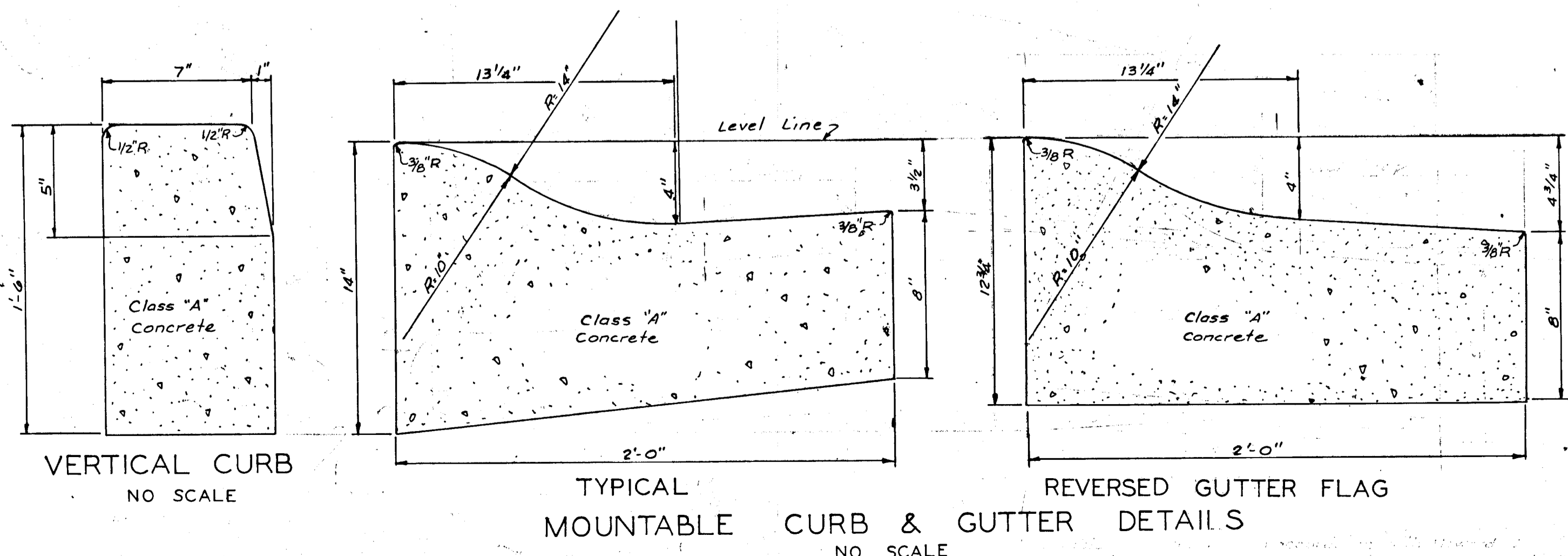


DARTING BIRD LANE  
Transition From Normal Section at Sta. 6+22.49  
To Full Super-elevated Section at Sta. 7+55.48

Note:  
Sidewalks shall be 6" thick at driveways. Location to be furnished at time of construction by the engineer.

4" Class "A" Concrete  
Howard Research & Development will construct Standard Howard Co. Portland Cement Concrete sidewalk or an alternate Design Approved by Howard County Roads Department

SIDEWALK  
NO SCALE



VERTICAL CURB  
NO SCALE

TYPICAL MOUNTABLE CURB & GUTTER DETAILS  
NO SCALE

REVERSED GUTTER FLAG

**APPROVED**  
PLANNING COMMISSION  
OF HOWARD COUNTY  
DATE 12-1-67  
*[Signature]*

LEGEND:  
T.C.4000 TOP OF CURB IN ELEV.  
T.C.4000I TOP OF GRATE IN ELEV.

Rev Date	Rev No	Revision Description
<b>COLUMBIA</b> MARYLAND		
THE ROUSE COMPANY THE VILLAGE OF CROSS KEYS, BALTIMORE, MARYLAND 21210		
PROJECT AREA VILLAGE OF WILDE LAKE SECTION 9-RUNNING BROOK AREA I		
PROJECT TITLE TYPICAL SECTIONS & CONSTRUCTION DETAILS		
Des By	P.K.	Scale As Shown
Drn By	J.G.M.	Date 01/18/67
Chk By	K.J.S.	Approved [Signature]
		Dwg No 10 of 10 C.C.F. No