
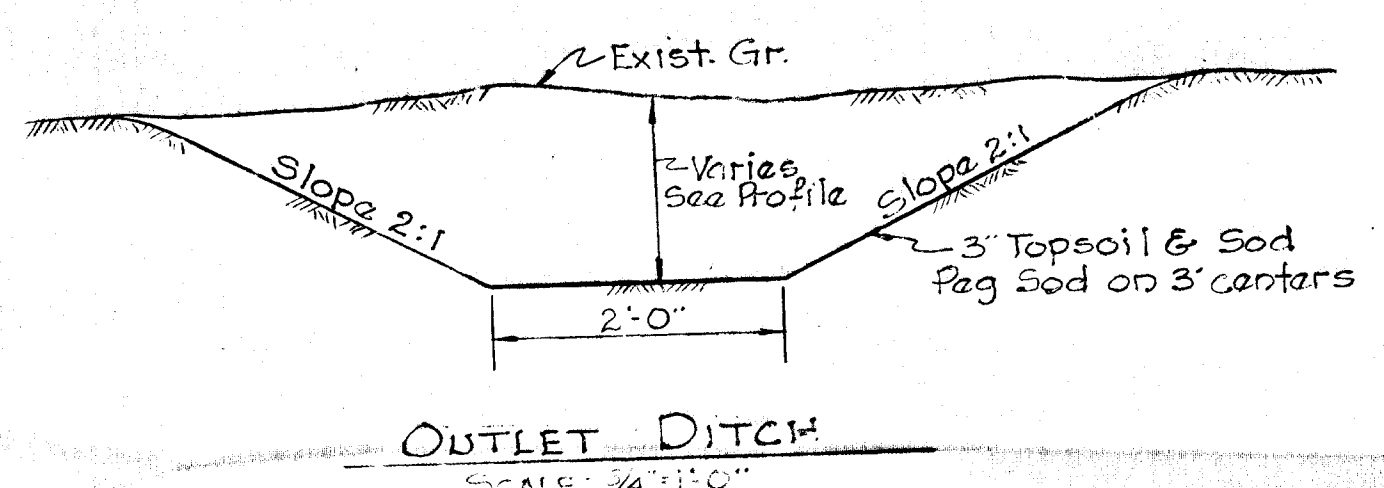
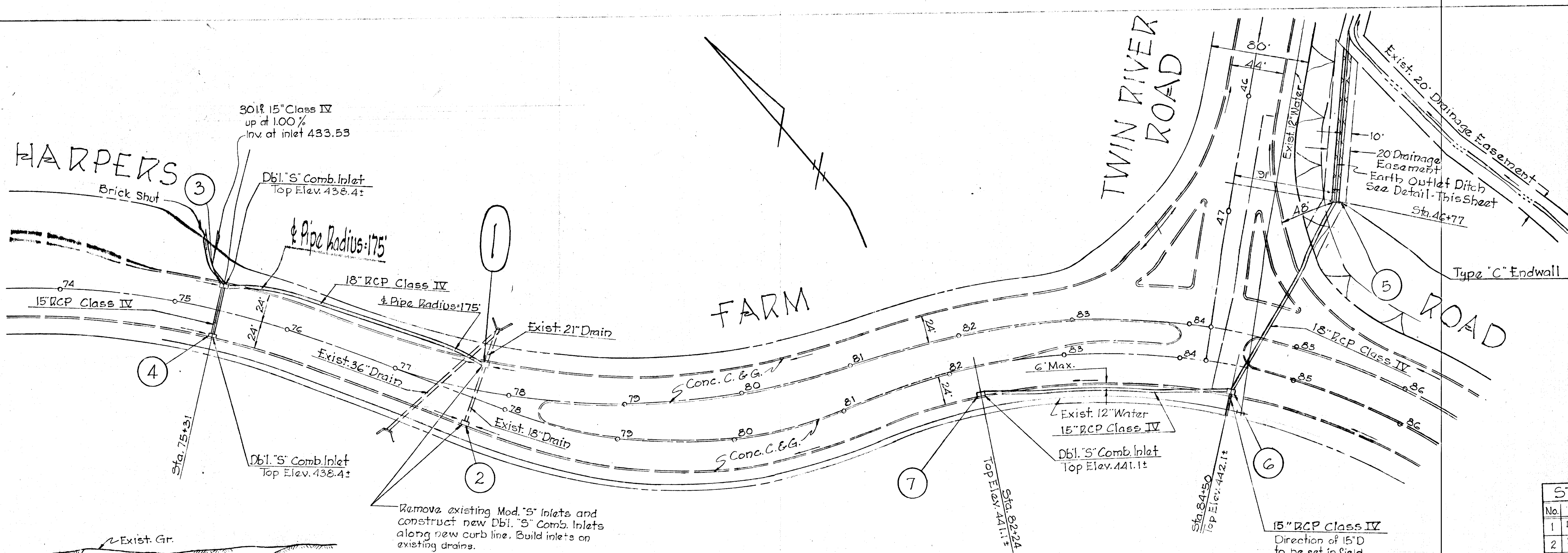


APPROVED
 PLANNING COMMISSION
 OF HOWARD COUNTY

HARPERS FARM ROAD
 DRAINAGE AREA MAP
 SECOND ELECTION DISTRICT HOWARD COUNTY, MARYLAND
 SHEET 1 of 2 SCALE: 1"=100'

 3-27-68 2472 WILLIAMSON 245 N. 2407	THE HOWARD RESEARCH AND DEVELOPMENT CORP. THE VILLAGE OF CROSSKEYS BALTIMORE, MARYLAND 21202	PURDUM & JESCHKE ENGINEERS & LAND SURVEYORS 1025 N. CALVERT STREET BALTIMORE, MARYLAND
Approved: Howard County Planning Comm. <i>J. J. [Signature]</i> 4-25-68 Approved: Howard County Roads Dept. <i>[Signature]</i> 4-24-68 Approved: Howard County Metropolitan Comm. <i>[Signature]</i> 3-31-68		

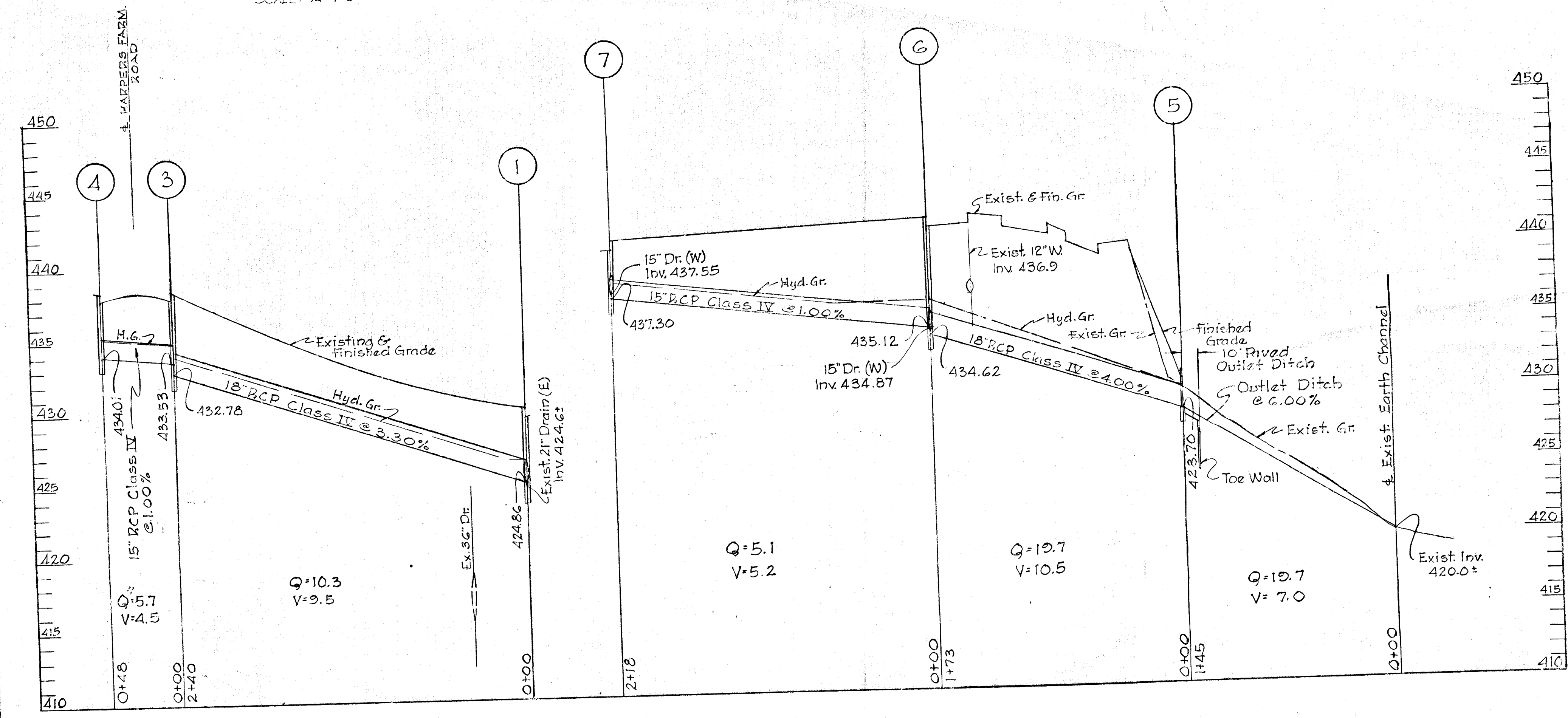
WO. 58063 29 March, 1968



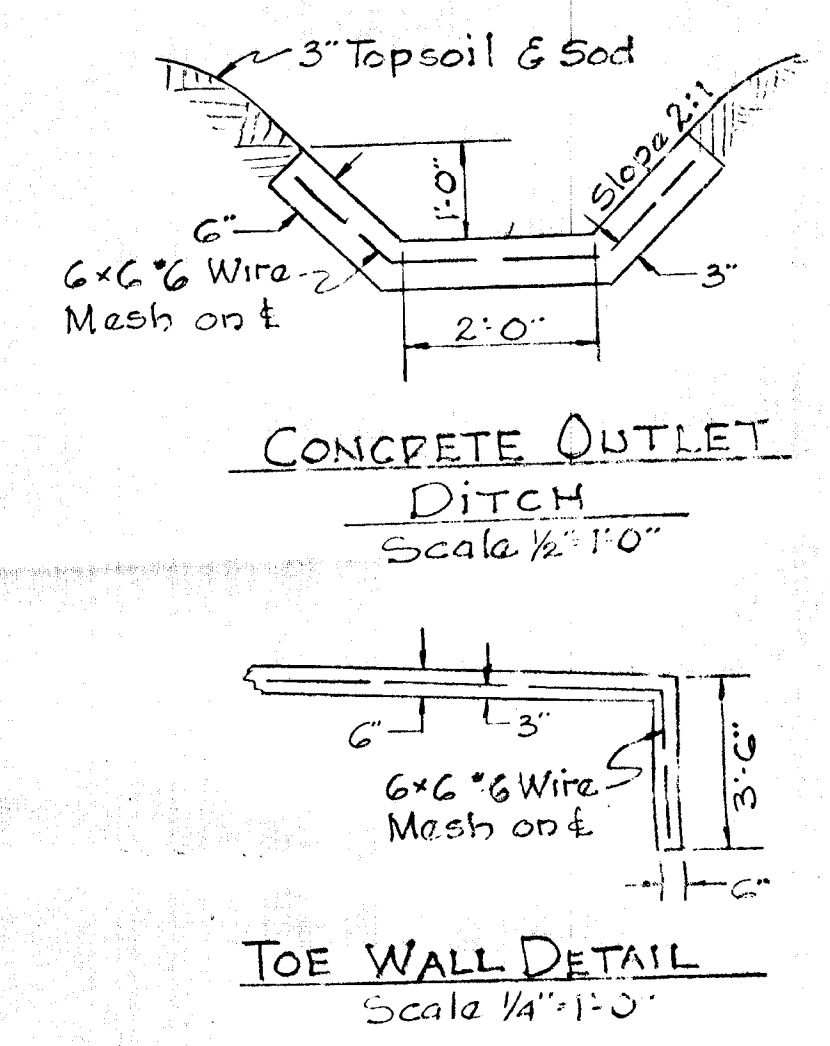
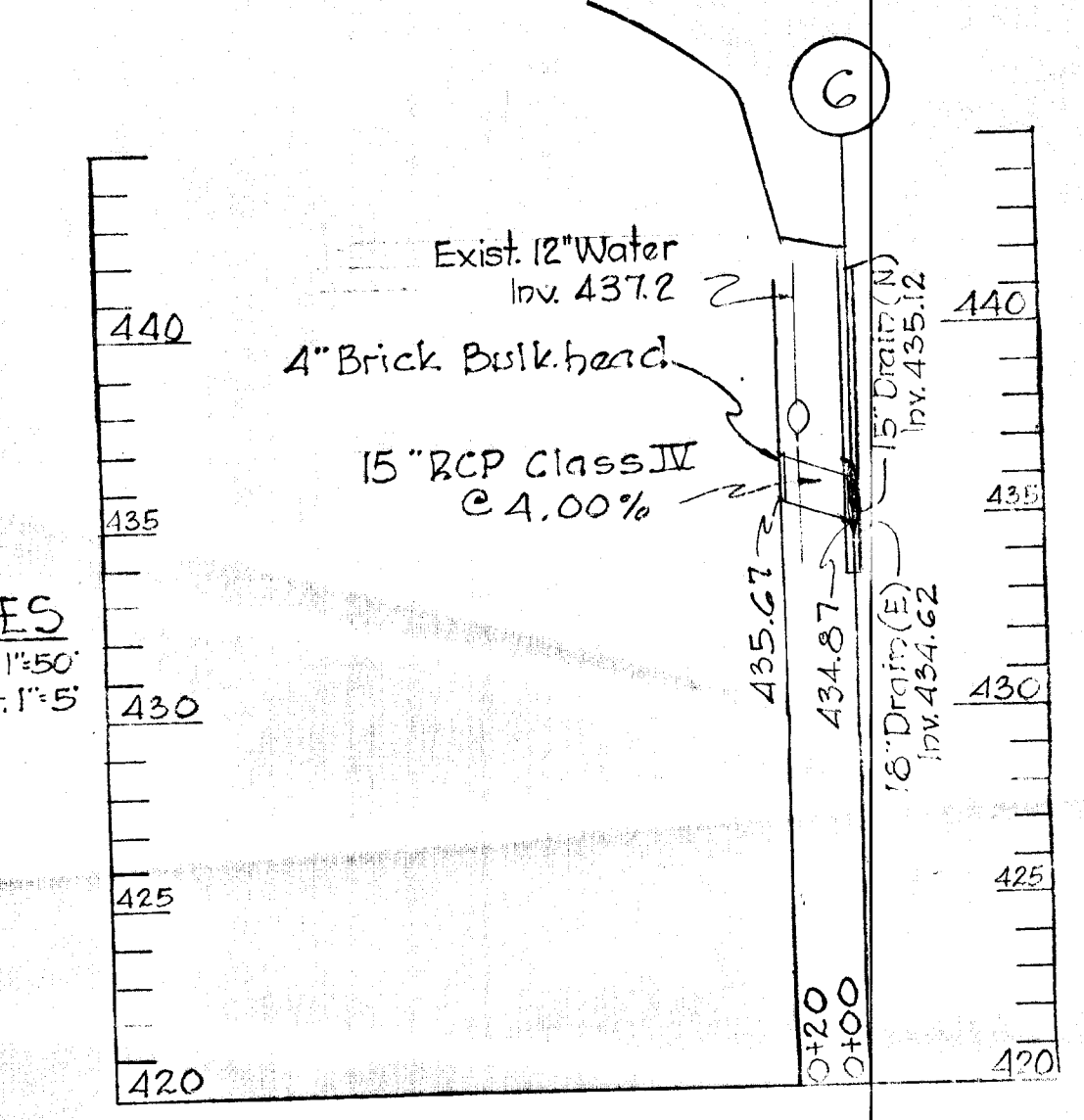
PLAN
 SCALE: 1\"/>

APPROVED
 PLANNING COMMISSION
 OF HOWARD COUNTY

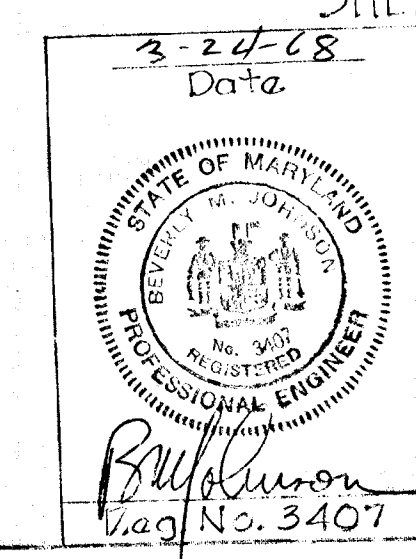
No.	TYPE	TOP ELEV.	REMARKS
1	Dbl. 5\"/>		
2	Dbl. 5\"/>		
3	Dbl. 5\"/>		
4	Dbl. 5\"/>		
5	Type C Endwall	430.05	Std. Drawing D-52
6	Dbl. 5\"/>		
7	Dbl. 5\"/>		



PROFILES
 HOR: 1\"/>



HARPERS FARM ROAD
 STORM DRAIN PLAN AND PROFILES
 SECOND ELECTION DISTRICT
 SHEET 2 OF 2
 HOWARD COUNTY, MARYLAND
 SCALE: AS SHOWN



THE HOWARD RESEARCH AND
 DEVELOPMENT CORP.
 THE VILLAGE OF CROSSKEYS
 BALTIMORE, MARYLAND 21202

DUBDUM & RESCHKE
 ENGINEERS & LAND SURVEYORS
 1023 N. CALVERT STREET
 BALTIMORE, MARYLAND

Approved: Howard County Planning Comm.
J.P. Clavon 4-25-68
D.M. Weiland 4-29-68
 Approved: Howard County Metropolitan Comm.
W.O. Paltus 8-31-68