

COLUMBIA

ELECTION DISTRICT 5

VILLAGE OF WILDE LAKE

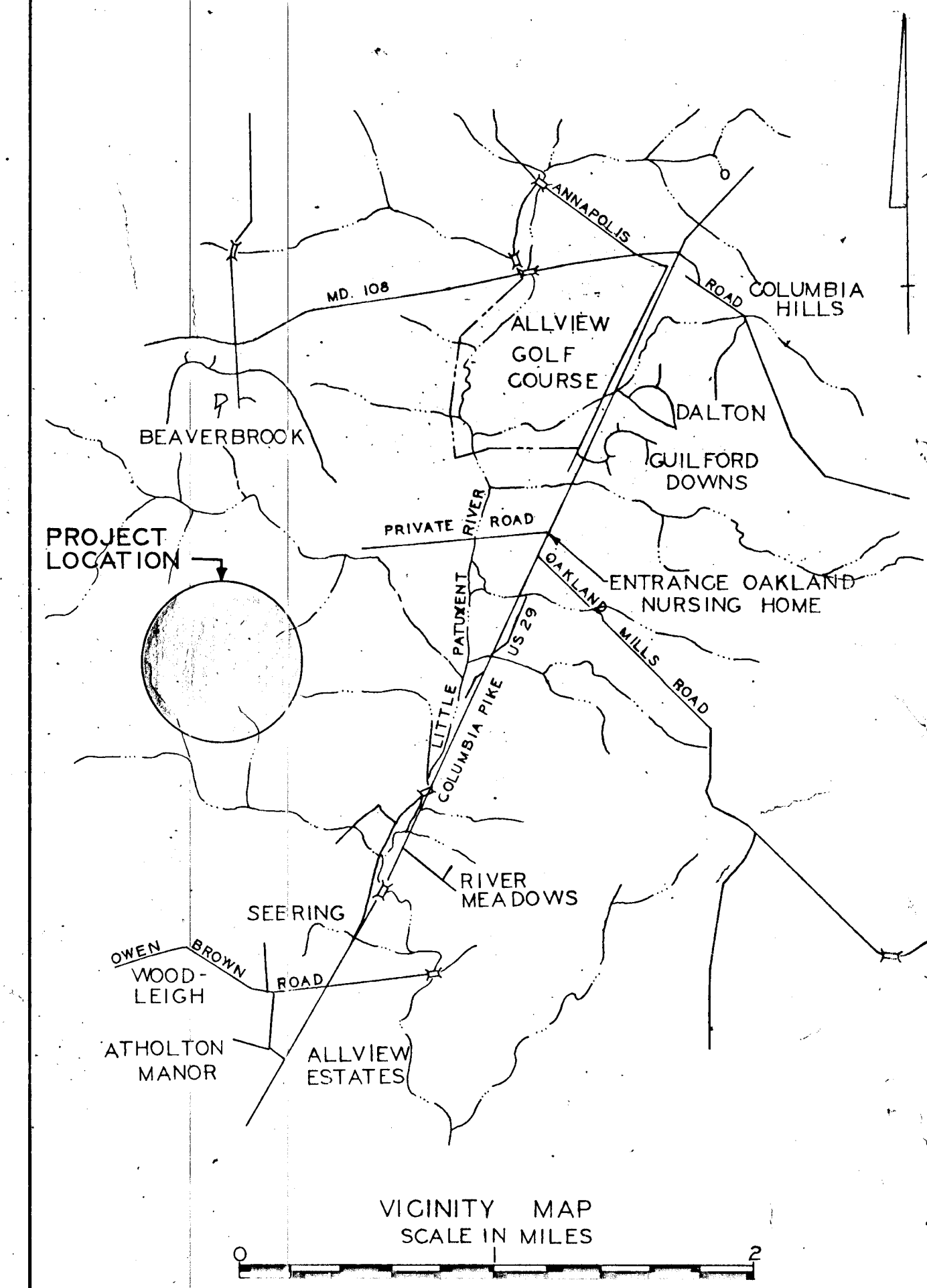
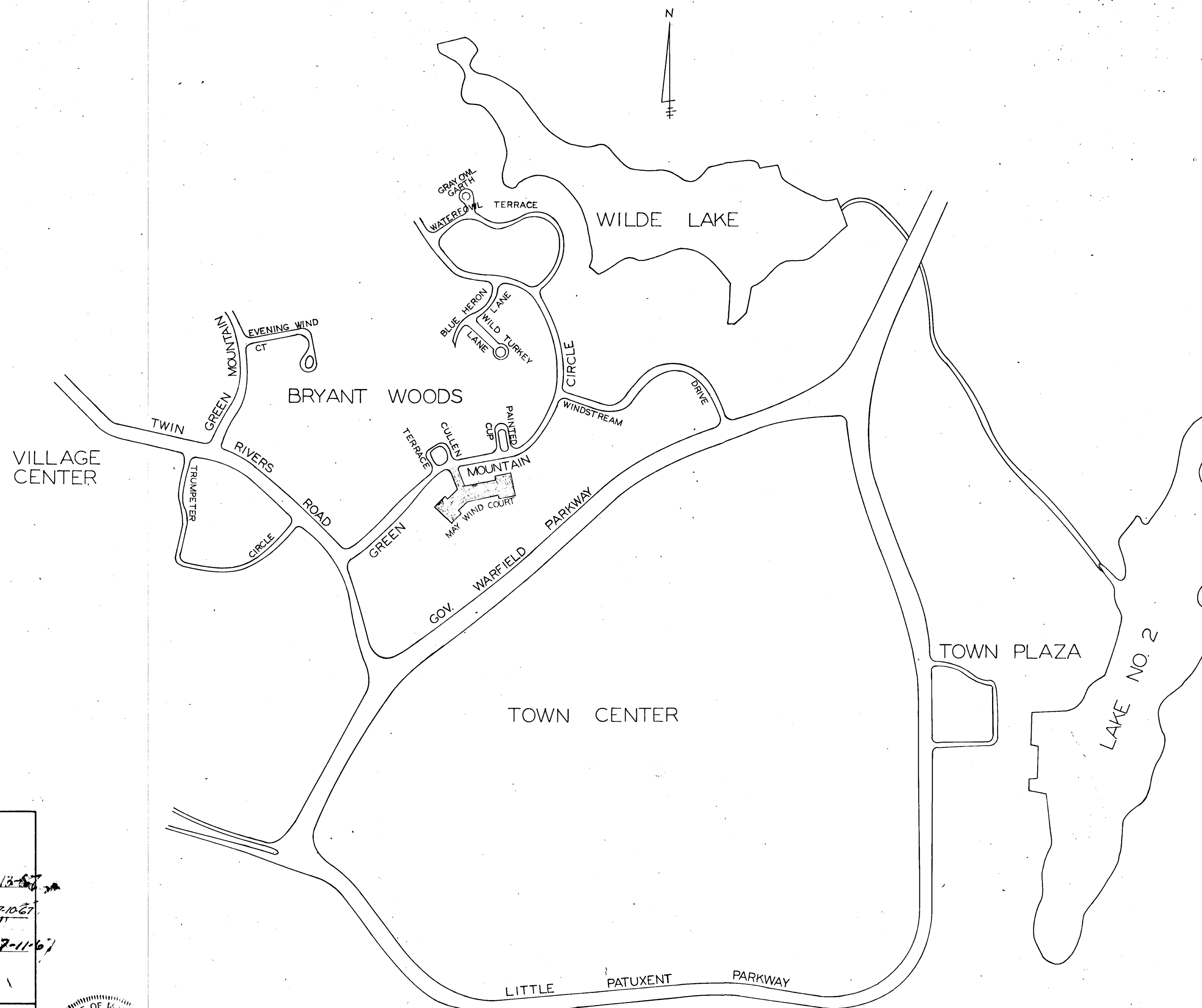
SECTION 7-

BEECHEN HILLS

HOWARD RESEARCH & DEVELOPMENT CORP.

HOWARD COUNTY, MARYLAND

APRIL 11, 1967



INDEX

NAME	DRAWING NO.
TITLE SHEET	1
PAVING PLAN	2
DRAINAGE PLAN	3
DRAINAGE AREA MAP	4

APPROVED
 PLANNING COMMISSION
 OF HOWARD COUNTY
 DATE 7-13-67

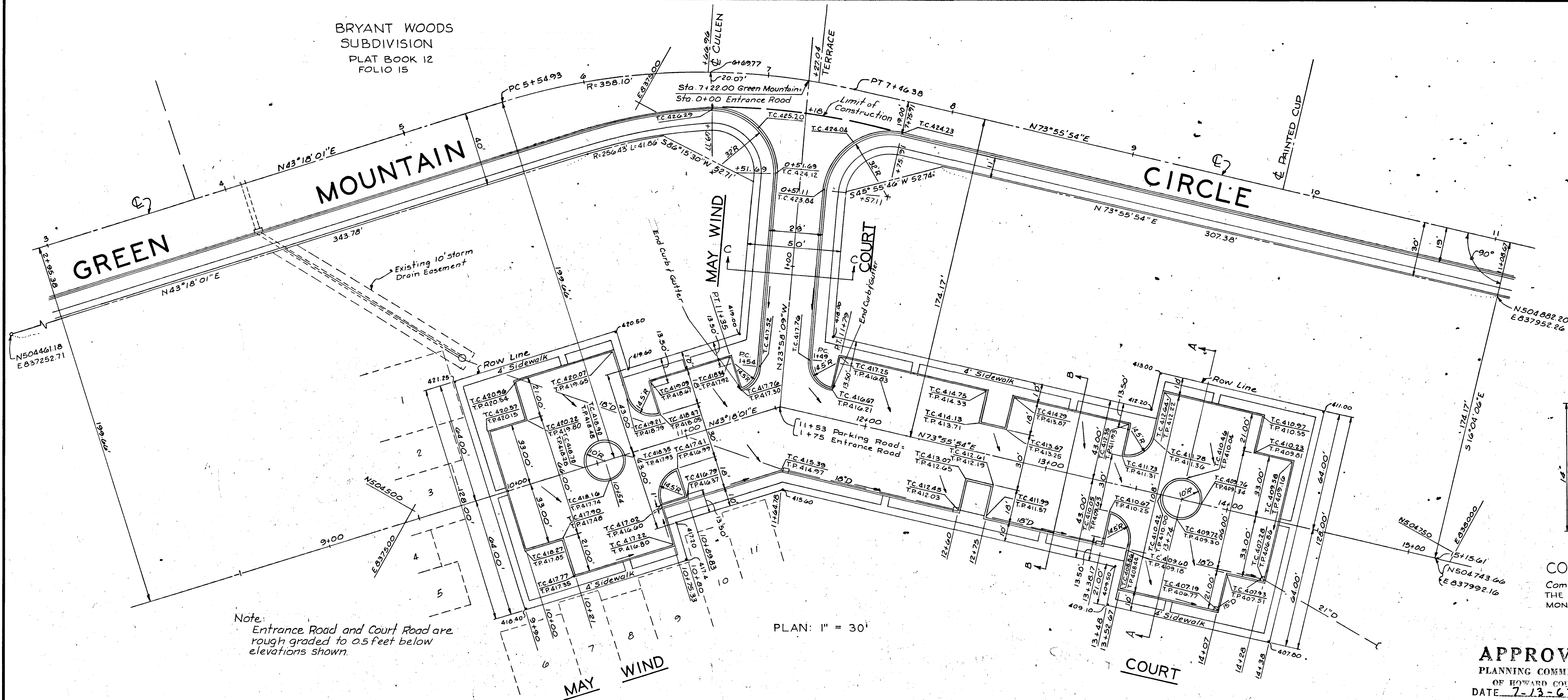
DEFINITIVE APPROVAL
 PLANNING COMMISSION
 OF HOWARD COUNTY

HOWARD COUNTY PLANNING COMMISSION
 SENIOR ENGINEER *J. H. Clouston* DATE 7-13-67
 HOWARD COUNTY ROADS DEPARTMENT
 ROAD SUPT. *James H. Alexander* DATE 7-10-67
 HOWARD COUNTY METROPOLITAN COMMISSION
 CHIEF ENGINEER *W. O. Leland* DATE 7-11-67

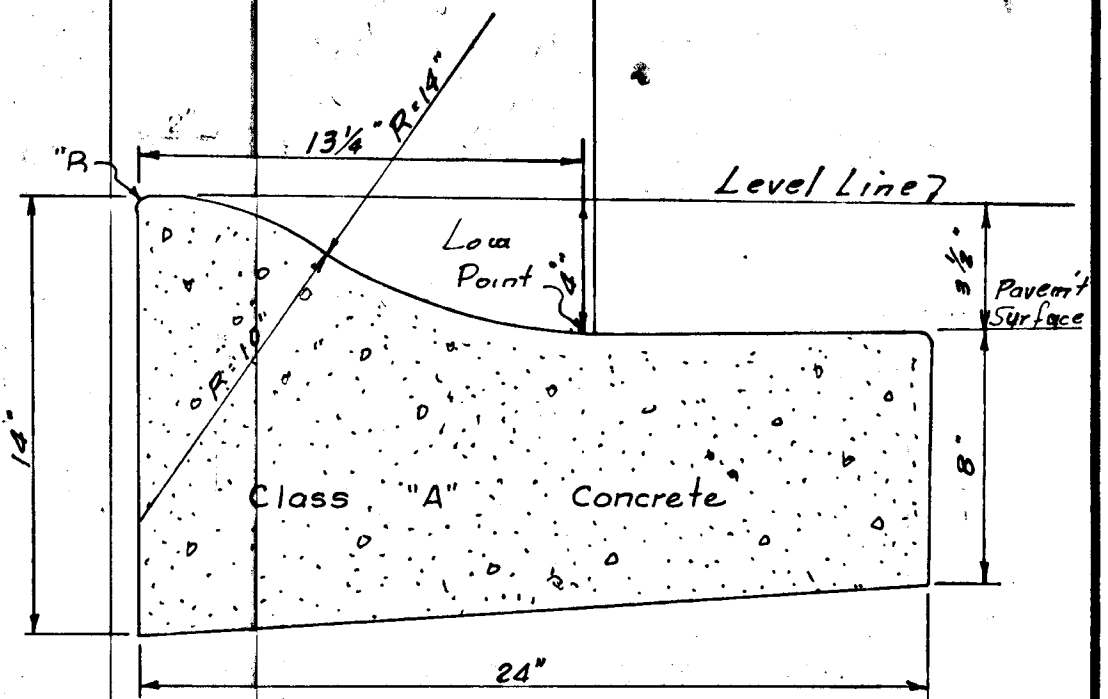
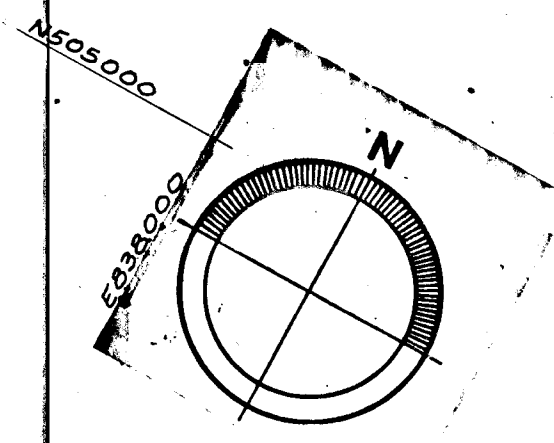
CONSOER, TOWNSEND & ASSOCIATES
 CONSULTING ENGINEERS
 OAKLAND MANOR, COLUMBIA, MARYLAND
William W. Townsend
 WILLIAM W. TOWNSEND P.E. 5177
 REGISTERED PROFESSIONAL ENGINEER
 DATE 4-11-67

OWNER & DEVELOPER:
HOWARD RESEARCH & DEVELOPMENT CORPORATION
 VILLAGE OF CROSS KEYS
 BALTIMORE, MARYLAND 21210

BRYANT WOODS
SUBDIVISION
PLAT BOOK 12
FOLIO 15



Note:
Entrance Road and Court Road are
rough graded to .05 feet below
elevations shown.

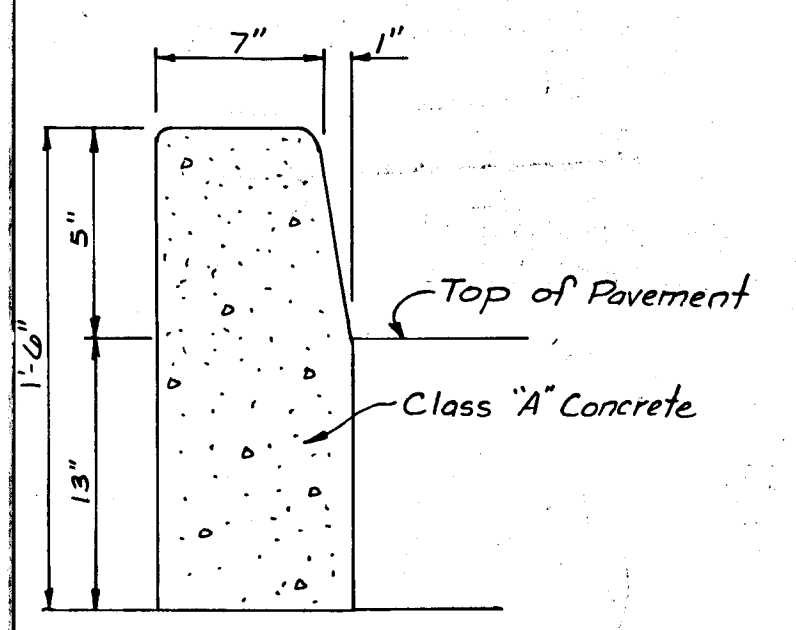


COMBINATION CURB AND GUTTER
(No Scale)
Combination Curb and Gutter shall be in accordance with
THE HOWARD COUNTY STANDARDS Page 165f or Approved Equal
MONTGOMERY COUNTY STANDARDS.

APPROVED
PLANNING COMMISSION
OF HOWARD COUNTY
DATE 7-13-67

TENTATIVE APPROVAL
PLANNING COMMISSION
OF HOWARD COUNTY

J. J. J.

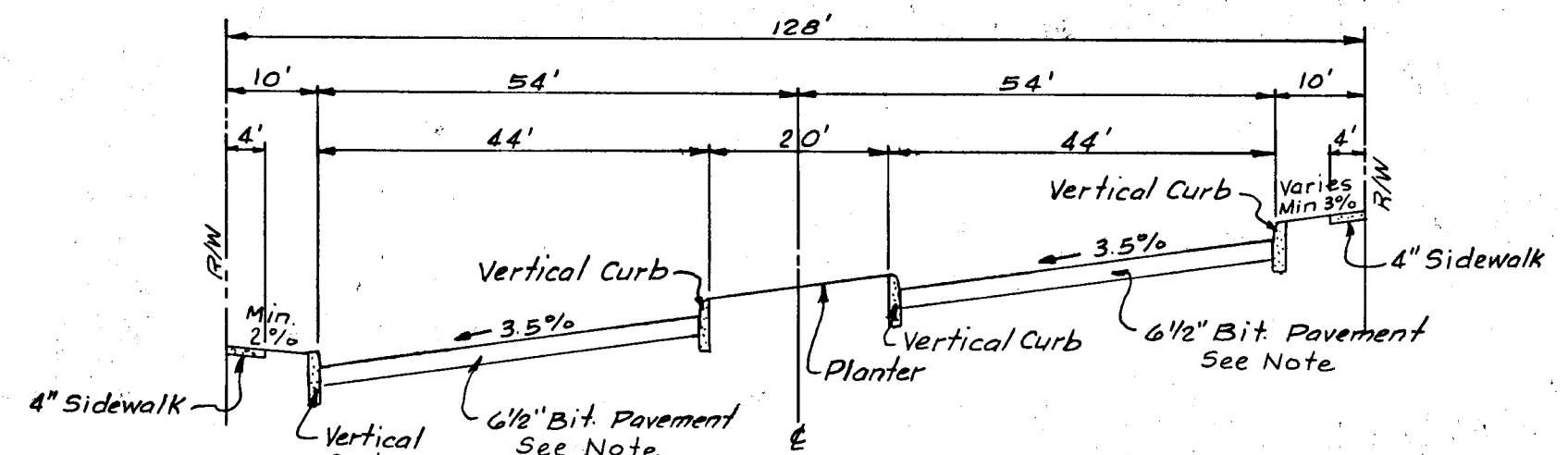


VERTICAL CURB
(No Scale)

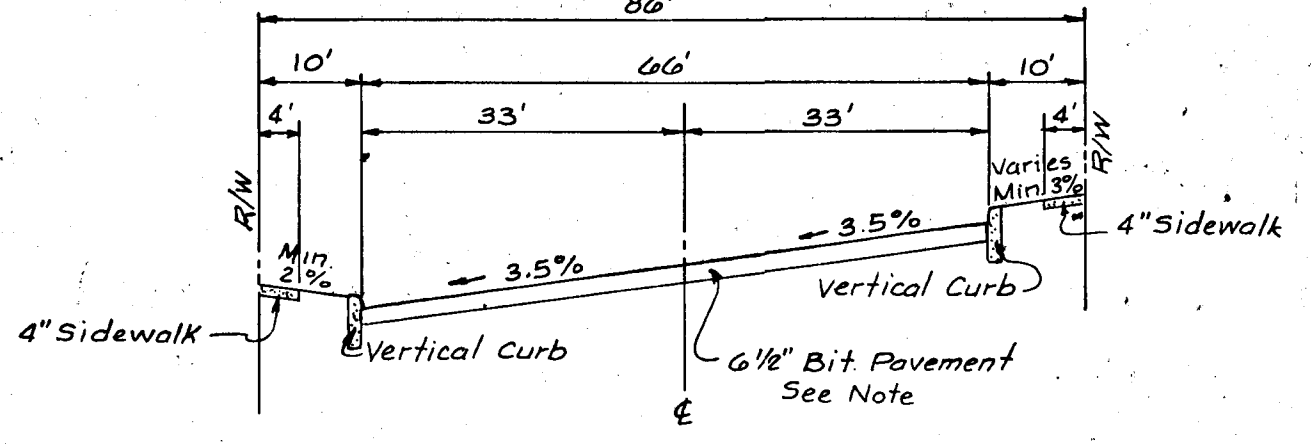
Note:
5" Bituminous Concrete Base Course
1 1/2" Bituminous Concrete Surface Course
This surface type to be constructed in accordance
with the HOWARD COUNTY ROAD CONSTRUCTION
CODE and SPECIFICATIONS Dwg D114 Page 165d

PREPARED BY:
CONSER, TOWNSEND & ASSOCIATES
OAKLAND MANOR OFFICE BUILDING
COLUMBIA, MARYLAND, 21043

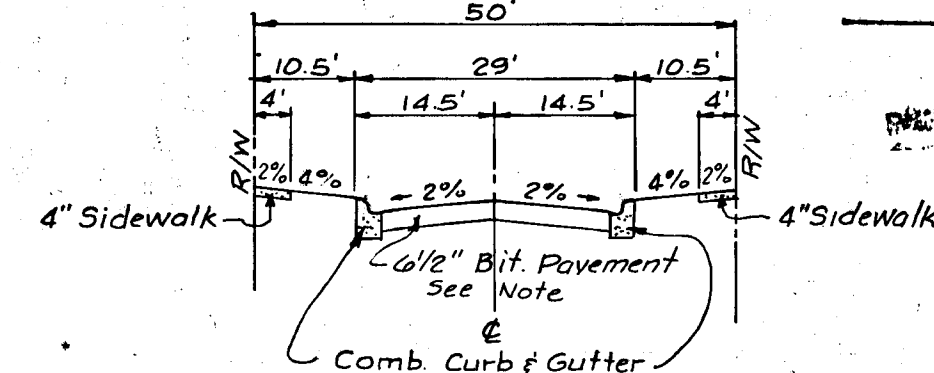
Rev Date	Rev No	Revision Description
COLUMBIA 5TH ELECTION DISTRICT HOWARD CO., MD M A R Y L A N D		
THE ROUSE COMPANY THE VILLAGE OF CROSS KEYS, BALTIMORE, MARYLAND, 21210		
PROJECT AREA BEECHEN HILLS		
PROJECT TITLE PAVING PLAN		
Des By	K.J.S.	Scale AS SHOWN
Drn By	J.G.M.	Date 4/11/67
Chk By	*P.K.	Approved
		Dwg No 2 of 4
		C.C.F. No



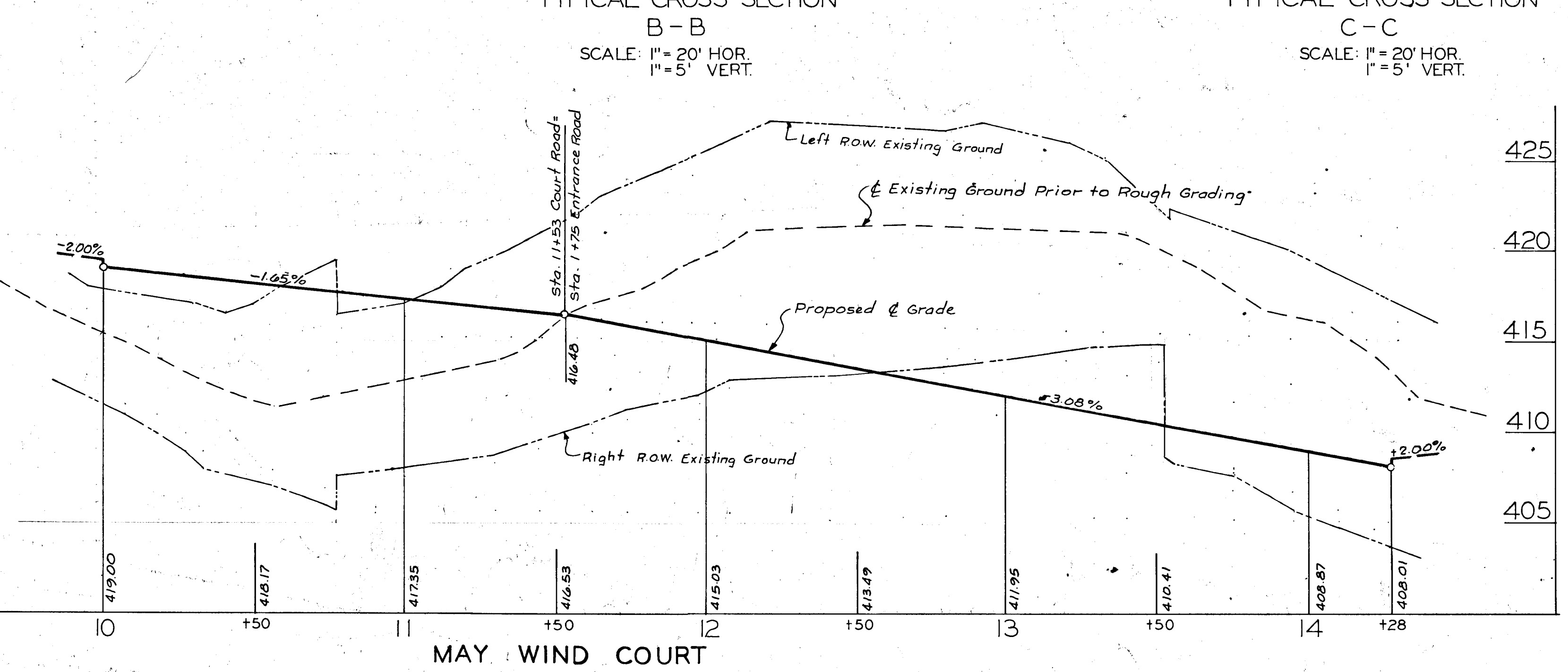
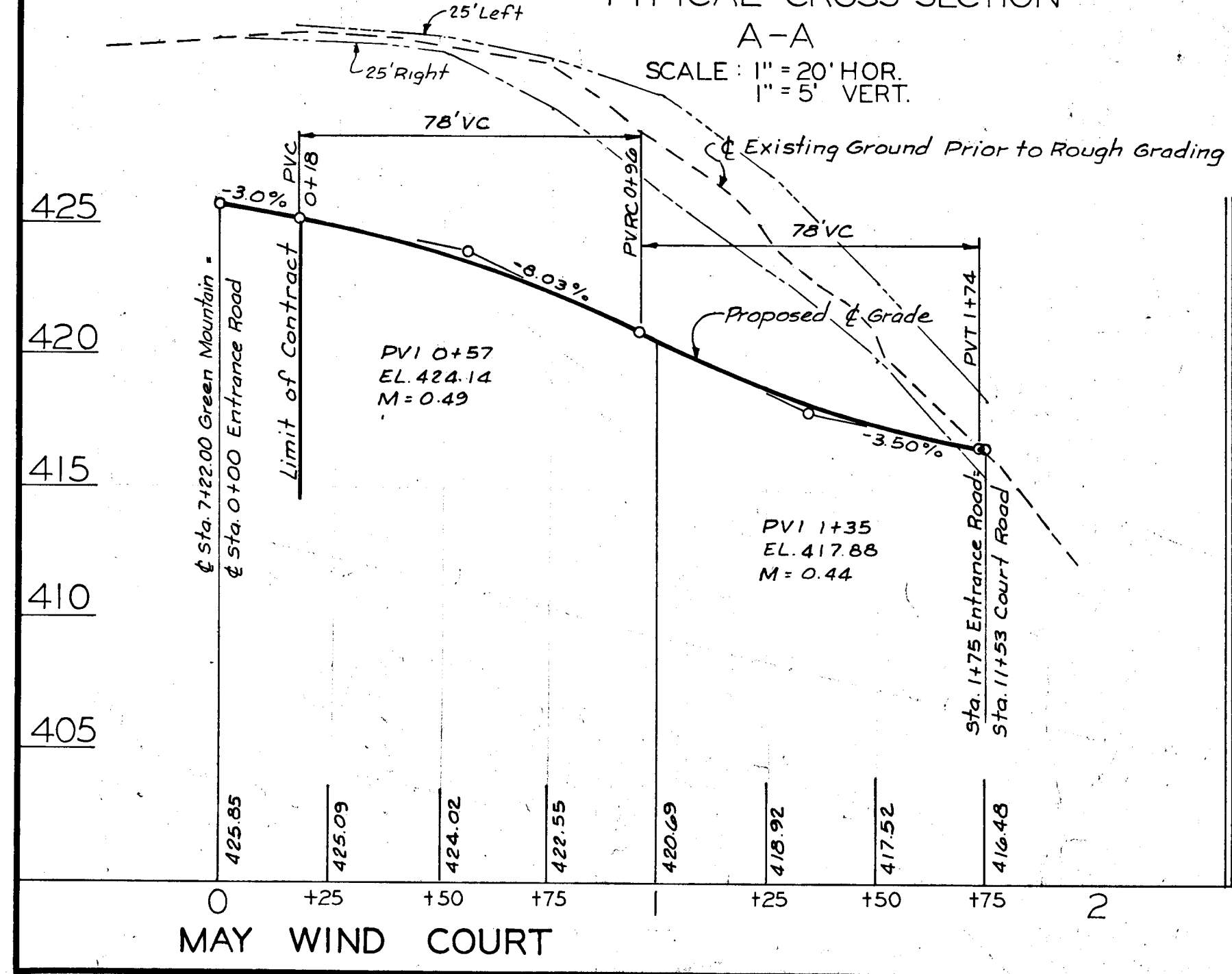
TYPICAL CROSS SECTION
A-A
SCALE: 1" = 20' HOR.
1" = 5' VERT.

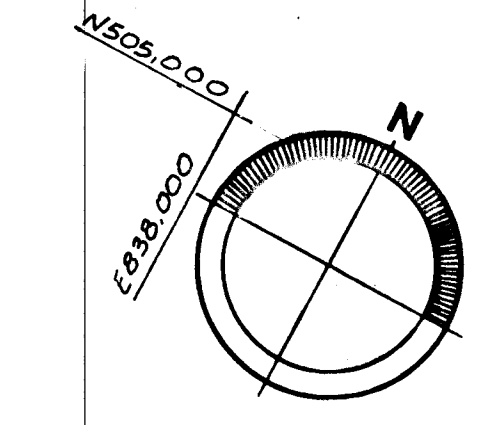
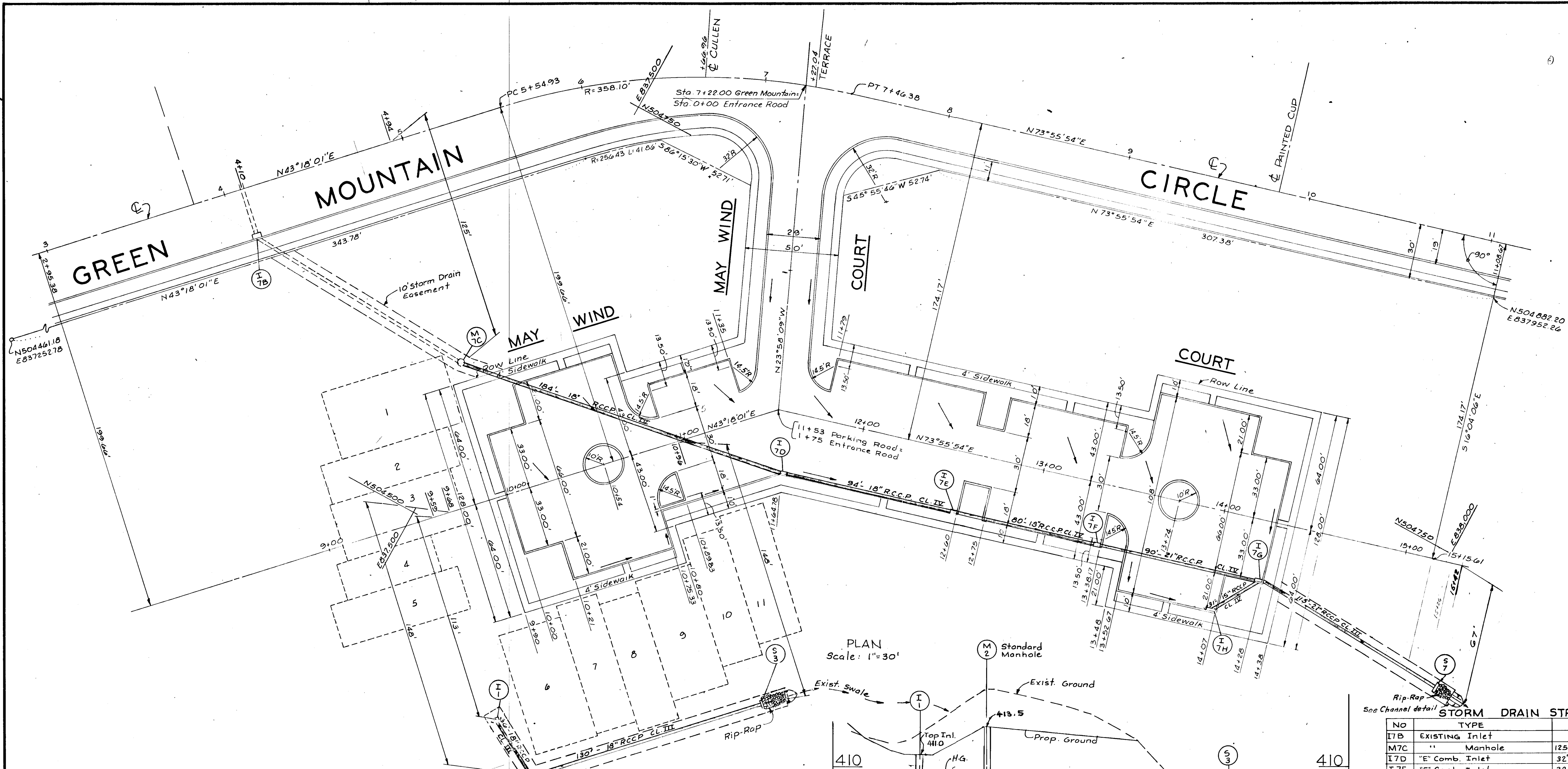


TYPICAL CROSS SECTION
B-B
SCALE: 1" = 20' HOR.
1" = 5' VERT.



TYPICAL CROSS SECTION
C-C
SCALE: 1" = 20' HOR.
1" = 5' VERT.



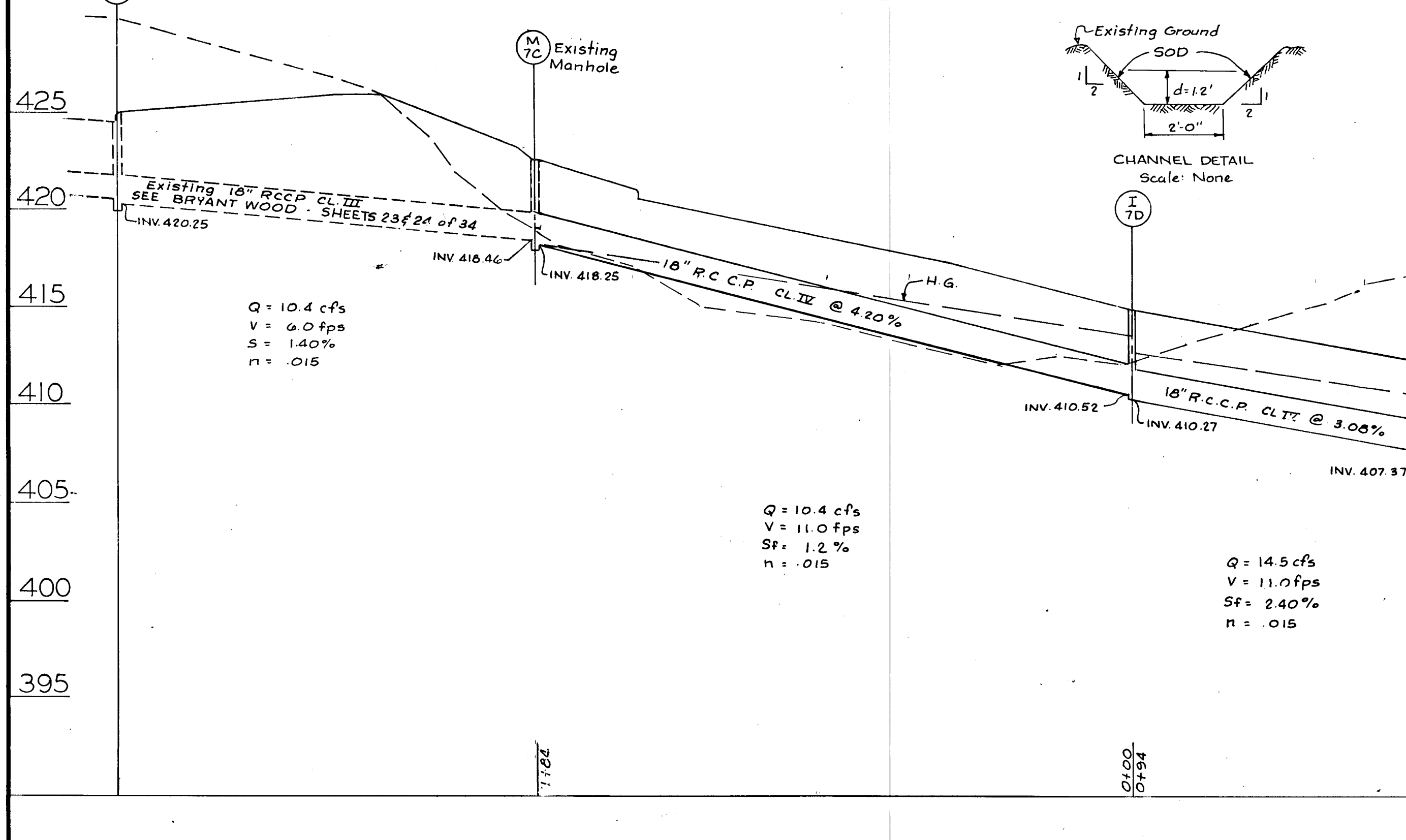
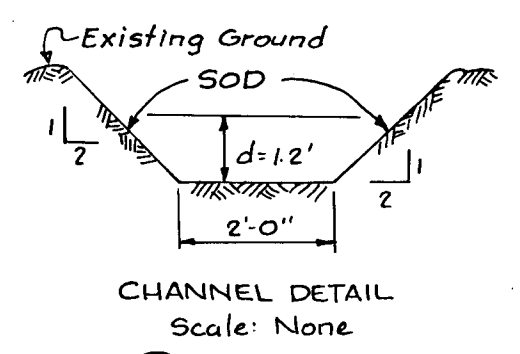
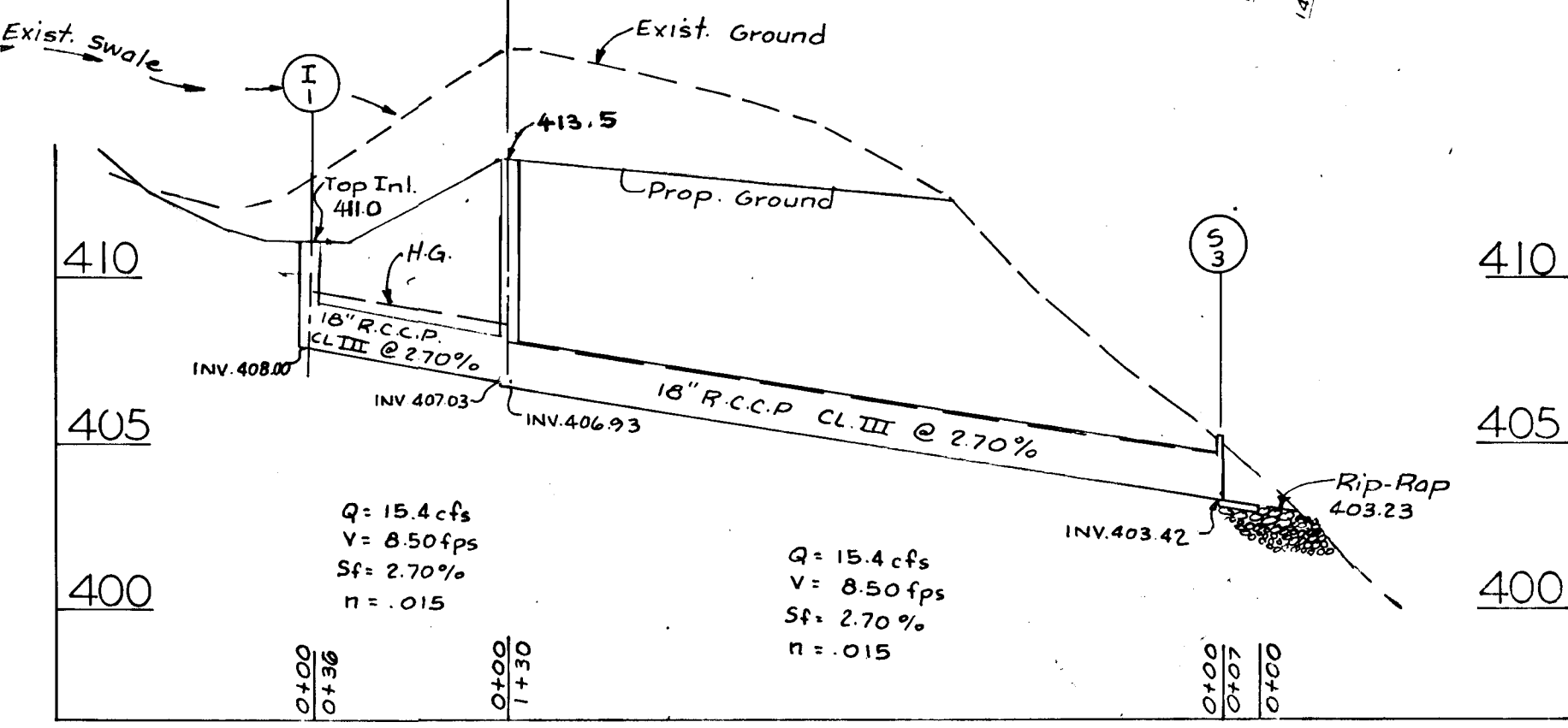


TENTATIVE APPROVAL **APPROVED**
 PLANNING & ZONING
 DATE 7-13-67

PLAN
Scale: 1"=30'

STORM DRAIN STRUCTURE SCHEDULE

NO	TYPE	LOCATION	REMARKS
I7B	EXISTING Inlet		SEE SH23 BRYANT WOODS
M7C	Manhole	125' RT. - Sta. 4+94	" " " "
I7D	"E" Comb. Inlet	32' RT. - Sta. 11+67.76	HO.CO. Rd. Code Pg 123
I7E	"E" Comb. Inlet	32' RT. - Sta. 12+57	" " " " Pg 123
I7F	"E" Comb. Inlet	32' RT. - Sta. 13+35.17	" " " " Pg 123
I7G	"E" Comb. Inlet	32' RT. - Sta. 14+25	" " " " Pg 123
I7H	"E" Comb. Inlet	53' RT. - Sta. 14+04	" " " " Pg 123
S7	"C" Endwall	53' RT. - Sta. 14+93	" " " " Pg 107
I1	"J" Inlet	113' RT. - Sta. 9+59	" " " " Pg 147
M2	Standard Manhole	148' RT. - Sta. 9+68	" " " " Pg 158
S3	"C" Endwall	148' RT. - Sta. 10+96	" " " " Pg 107



Scale: HOR. 1"=30'
VERT. 1"=5'

PREPARED BY:
 CONSOER, TOWNSEND & ASSOCIATES
 OAKLAND MANOR OFFICE BUILDING
 COLUMBIA, MARYLAND, 21043

Rev Date	Rev No	Revision Description

COLUMBIA
 5th ELECTION DISTRICT
 MARYLAND

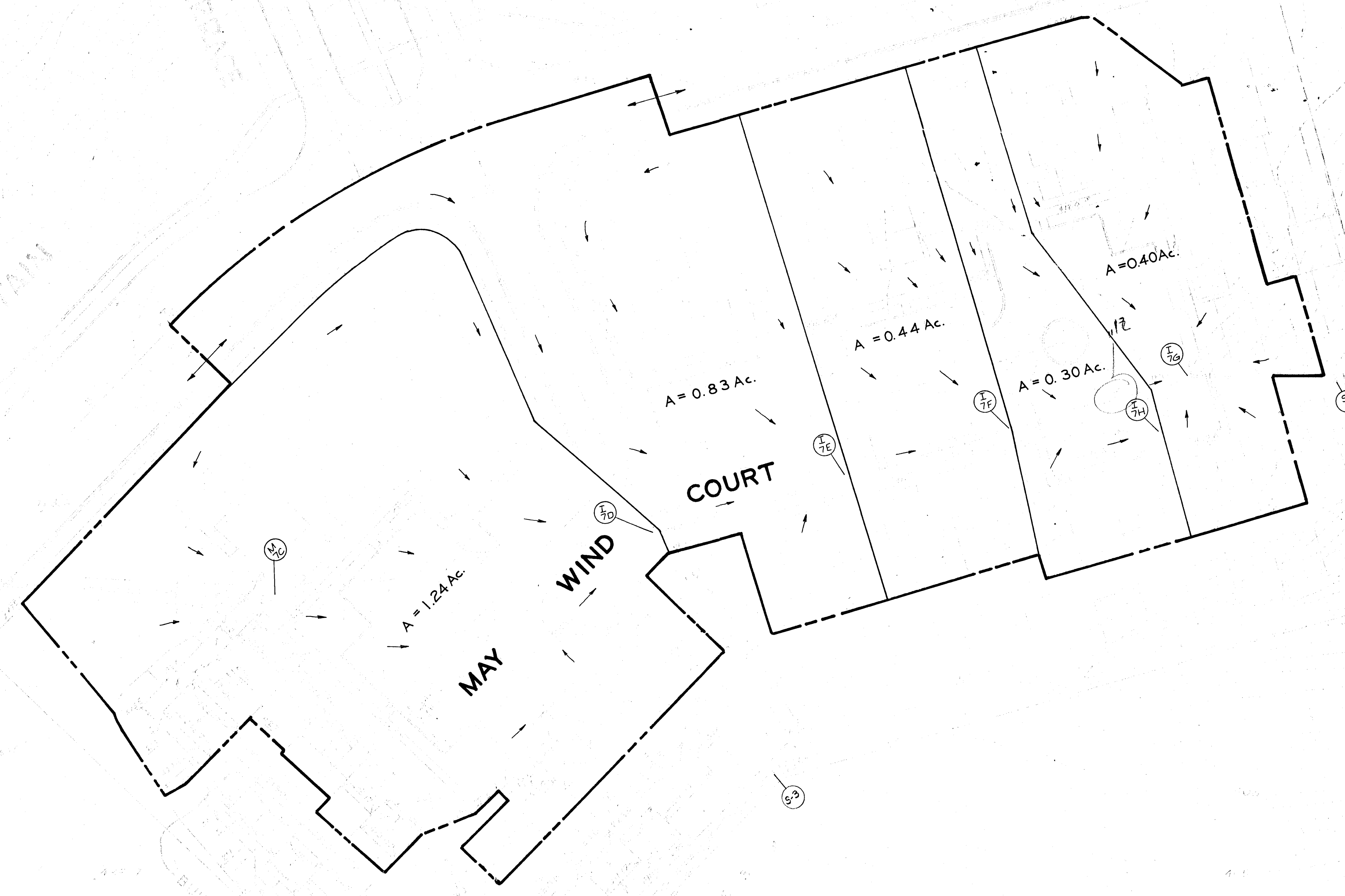
THE ROUSE COMPANY
 THE VILLAGE OF CROSS KEYS,
 BALTIMORE, MARYLAND 21210

PROJECT AREA
BEECHEN HILLS

PROJECT TITLE
DRAINAGE PLAN

Des By K.J.S. Scale AS SHOWN Dwg No 3 of 4
 Drn By J.G.M. Date 4/11/67 C.C.F. No
 Chk By P.K. Approved

M504750



TENTATIVE APPROVAL
 PLANNING COMMISSION
 OF HOWARD COUNTY

APPROVED
 PLANNING COMMISSION
 OF HOWARD COUNTY
 DATE 7-13-67

JKE

5th ELECTION DISTRICT HOWARD CO., MD.
 BEECHEN HILL
 DRAINAGE AREA MAP

4/11/67

F-67-25

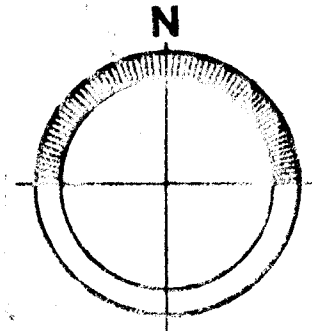
N505,000

E837,250

E237,500

E237,250

E238,000



REVISED
DATE 1/15/58
BY J. B. BROWN

N504,750

N504,500

GREEN

MOUNTAIN

TERRACE

CULLEN

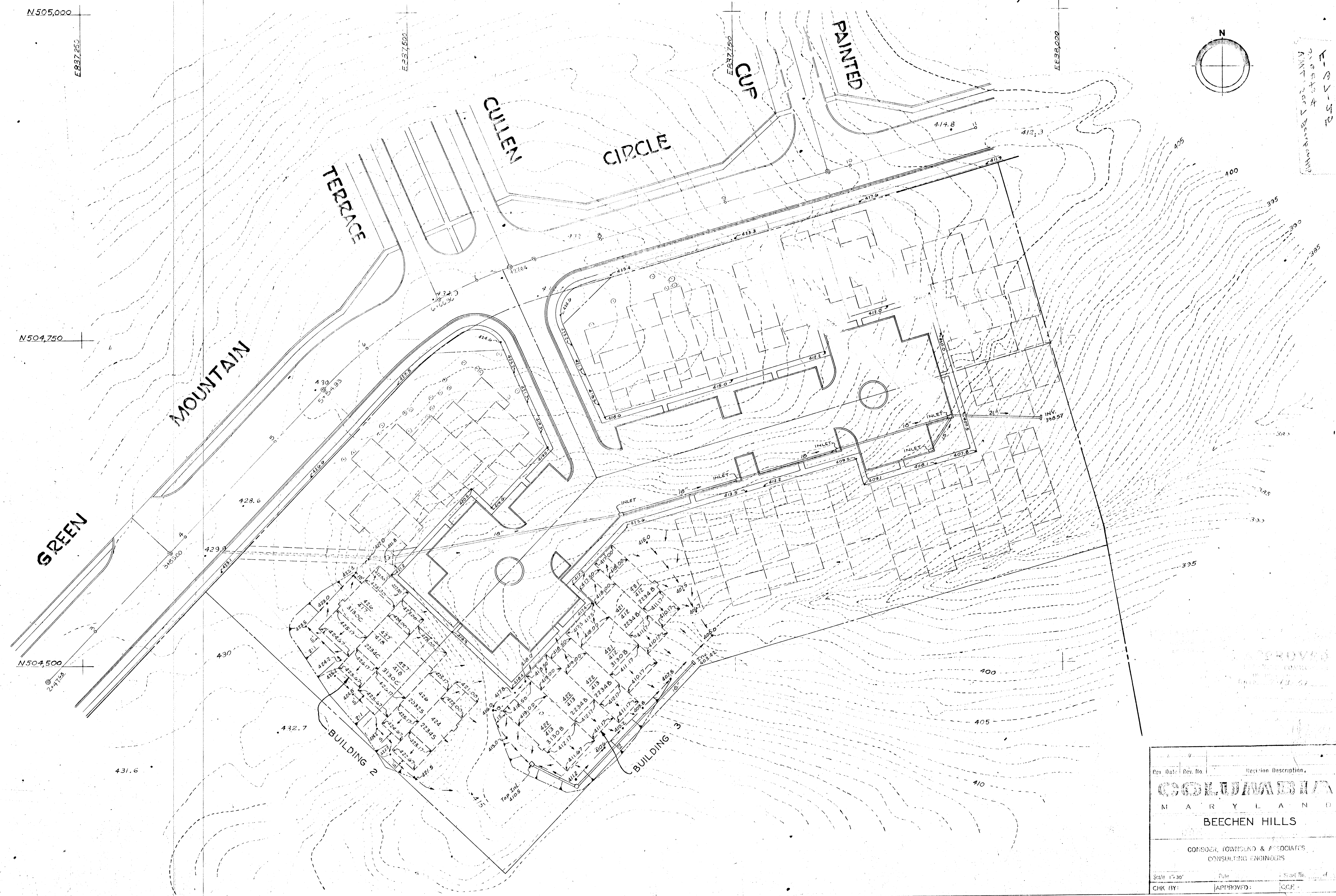
CIRCLE

CUP

PAINTED

BUILDING 2

BUILDING 3



Rev. Date	Rev. No.	Revision Description

COLUMBIA
MARYLAND
BEECHEN HILLS

CONSER, FOWLEND & ASSOCIATES
CONSULTING ENGINEERS

Scale: 1"=30' Date: _____ Sheet No. _____ of _____

CHK BY: _____ APPROVED: _____ CCF