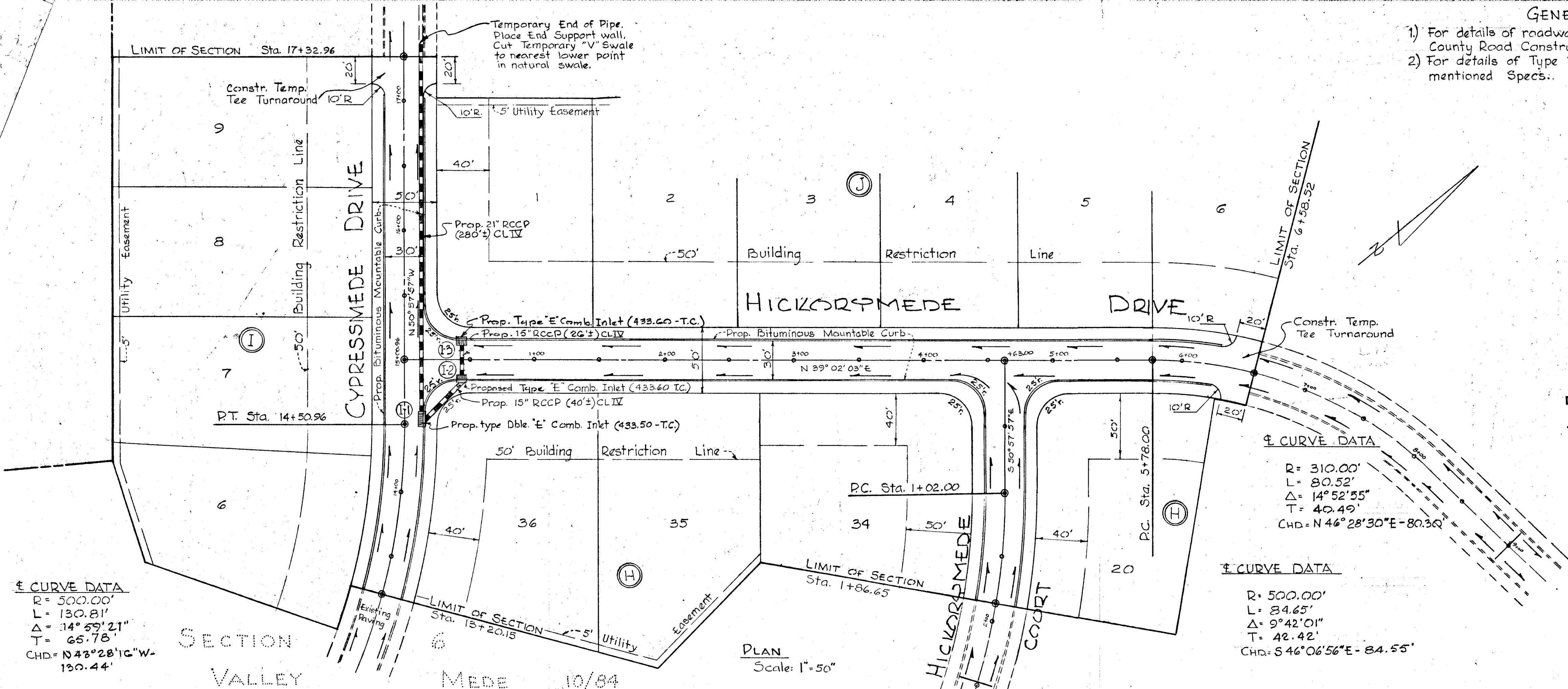


GENERAL NOTES

- 1) For details of roadway section see drawing D-16, page 71, Howard County Road Construction Code and Standard Specifications.
- 2) For details of Type "E" Comb. Inlet see dwg. D-68, page 123, of the above mentioned Specs.



APPROVED
 PLANNING COMMISSION
 OF HOWARD COUNTY
 DATE _____

OWNER & DEVELOPER ZENITH CONTRACTORS, INC. 289 LONGVIEW DRIVE "VALLEY MEDE" ELLCOTT CITY, MARYLAND	
PURDUM & JESCHKE ENGINEERS 24 PARK AVENUE ELLCOTT CITY, MD.	
4-19-67 Date	5-16-67 Date
Approved: Howard County Planning Commission	
Approved: Howard County Roads Department	
Approved: Howard County Metropolitan Commission	

PLAN & PROFILE - CYPRESSMEADE DRIVE, HICKORYMEADE DRIVE & HICKORYMEADE CT.
 SECTION SEVEN
VALLEY MEDE
 2ND ELECTION DISTRICT HOWARD COUNTY, MD.
 19 APRIL 1967
 CYPRESSMEADE RD. PROFILE REV. 7-19-67 M.L.S.
 SHEET 1 OF 1 SCALE: AS SHOWN

