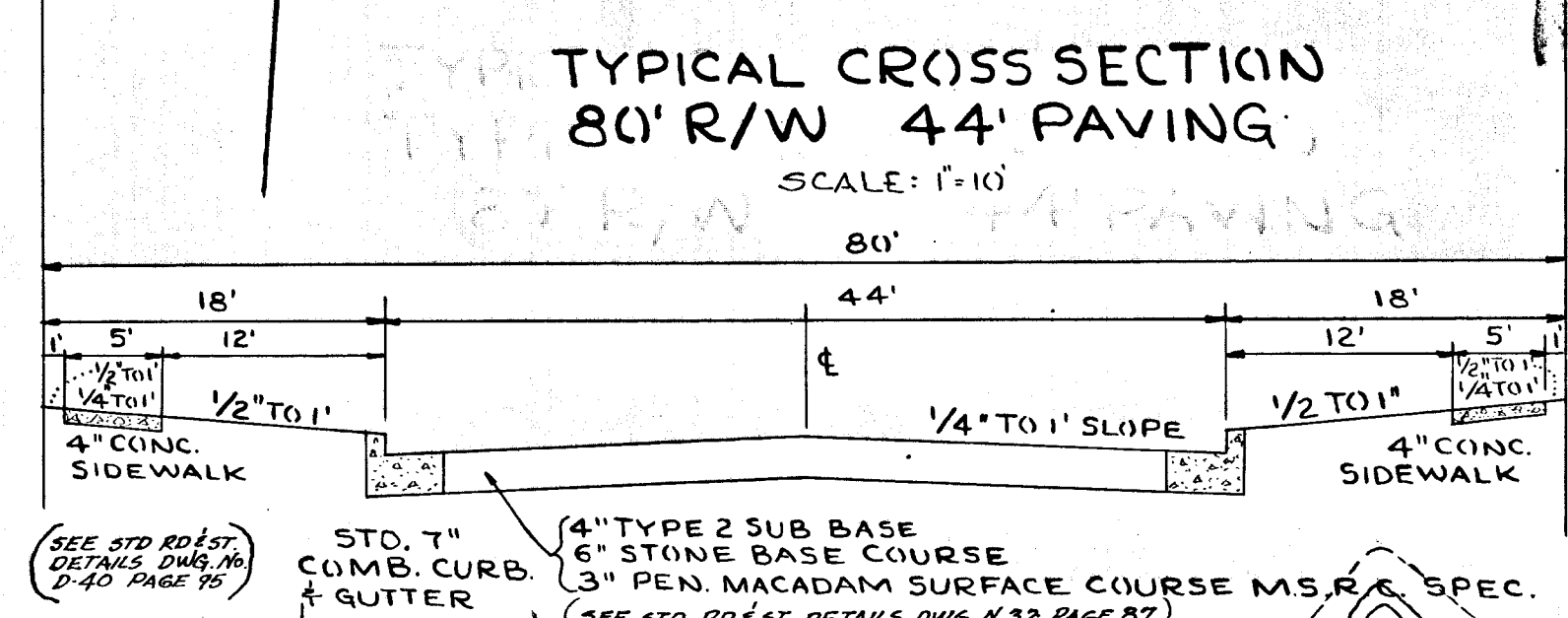


APPROVED
PLANNING COMMISSION
OF HOWARD COUNTY

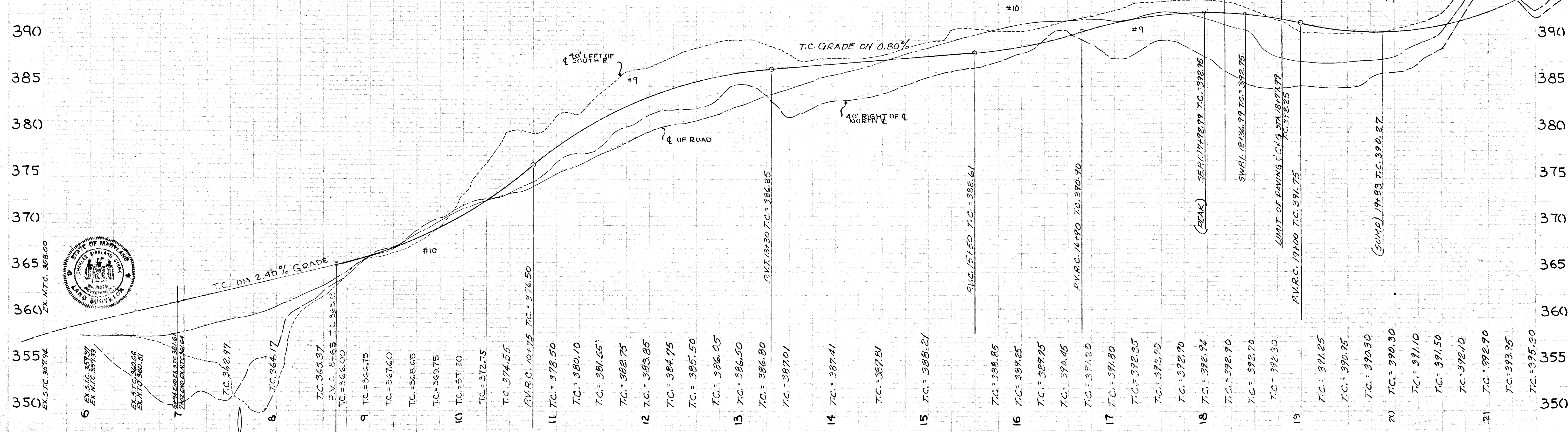


NOTE: FOR PROFILE OF ABOVE STORM DRAINS SEE SHEETS 1 & 3 OF S.D. PLANS

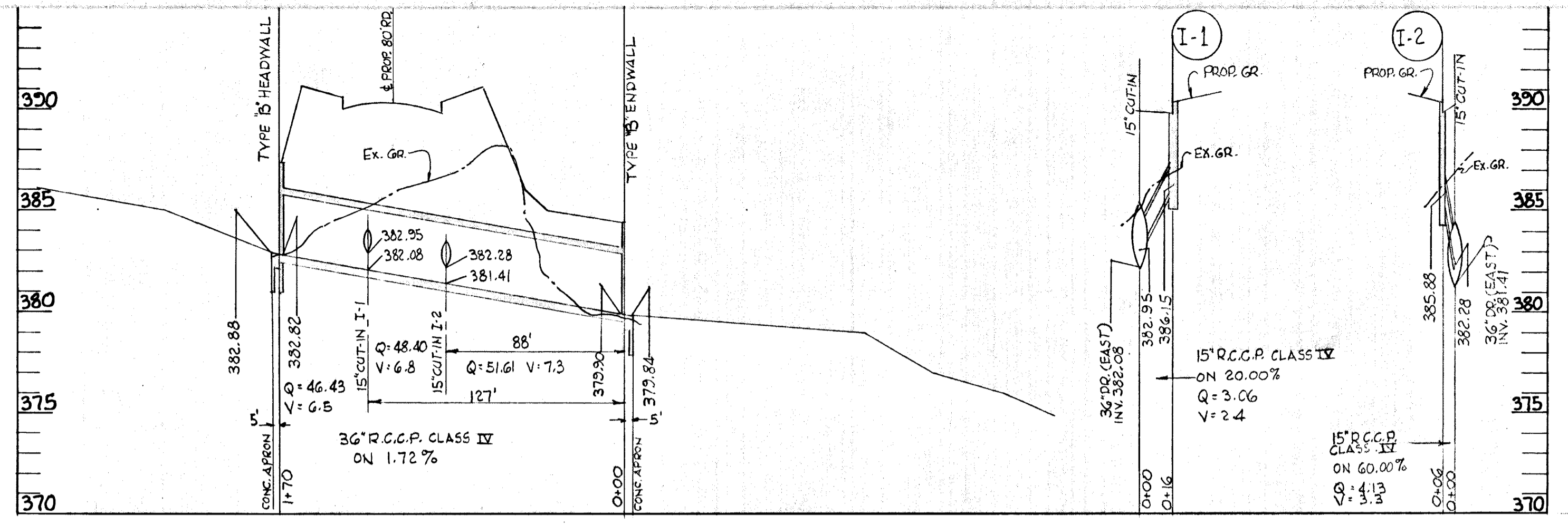
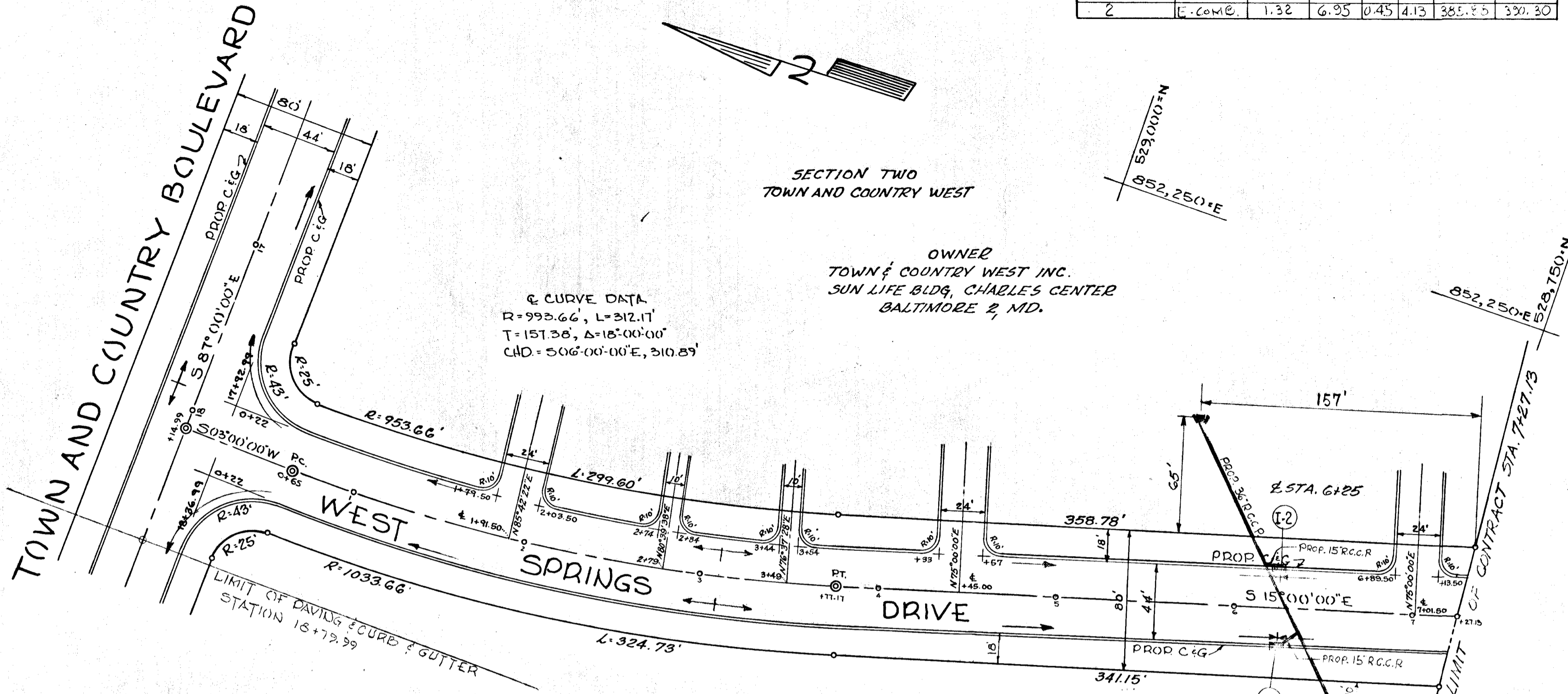
STORM DRAIN FLOW TABULATION FORM														
LOCATION		AREA	ACRES		COEFF. C	CA	ΣCA	TIME CONC. MIN.		INTEN. I	Q=C.I.A. GFS.	PIPE Ø=0.013	REMARKS	
FROM	TO		SUB	TOTAL				INLET	DRAIN					TOTAL
E-W	E-W	A-J	40.30			18.12		16.2	5.20	97.34	36"	2.4	20 YR.	
I-7	M-5	U	1.89		.45	.85		12	5.75	4.89	15"	.62	3.8	24'
I-8	M-5	V	0.48		.60	.29		10	6.10	1.77	15"	.08	1.4	24'
M-5	M-6	U-Y		2.37		1.14	.1	12.1	5.75	6.56	18"	.43	3.7	405'
I-10	M-6	W	1.20		.65	.79		12	5.75	4.54	15"	.43	3.7	22'
M-6	I-20	U-W		3.58		1.93	1.7	13.8	5.55	10.71	18"	1.15	5.9	22'
I-20	E-W	U-X	4.05			2.21	.1	13.9	5.50	12.16	18"	1.5	6.7	68'

MANHOLE SCHEDULE				
Nº	TYPE	SIZE	INV. OUT	TOP ELEV.
5	STD.	36"	382.03	386.15
6	STD.	36"	360.72	366.00

INLET SCHEDULE							
Nº	TYPE	ACRES	I	C	Q	INV. OUT	TOP ELEV.
17	S-COMB	1.89	5.75	.45	4.89	382.80	386.40
18	S-COMB	0.48	6.10	.60	1.77	382.54	386.40
19	S-COMB	1.20	5.75	.65	4.54	362.27	366.10
20	S-COMB	0.46	6.10	1.71		360.08	366.10



INLET SCHEDULE						
N ^o	TYPE	ACRES	I	C	Q	TOP ELEV.
1	E-COM ^o	0.31	6.35	0.45	3.06	330.50
2	E-COM ^o	1.32	6.95	0.45	4.13	330.50



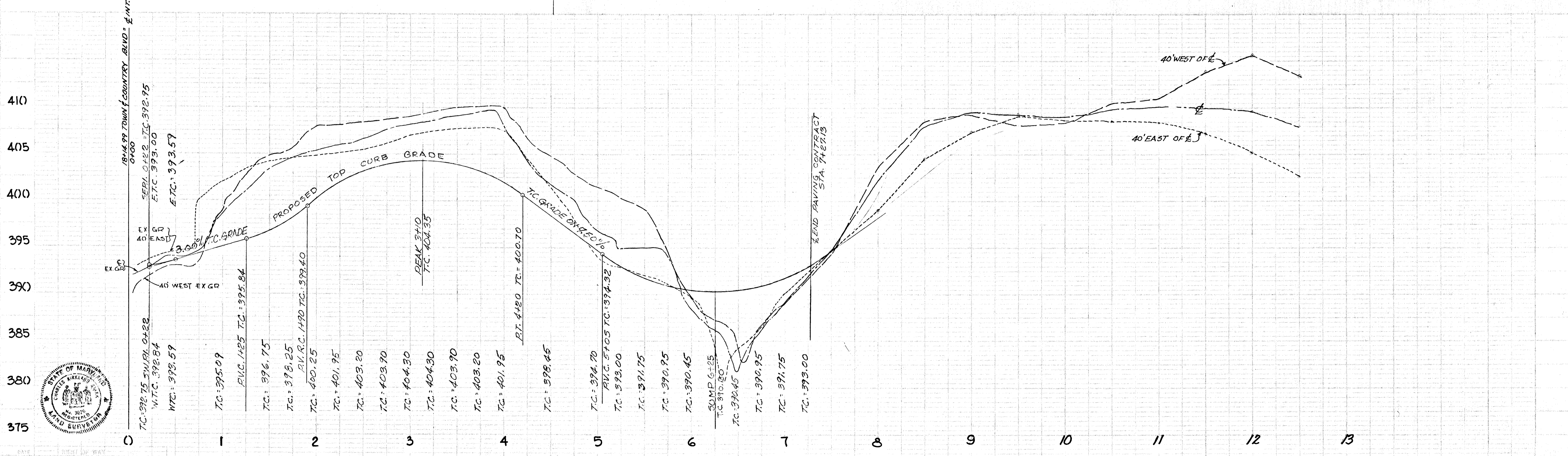
STORM DRAIN FLOW TABULATION FORM

STORM FREQUENCY 10 YR. EXCEPT AS NOTED

LOCATION FROM TO	AREA ACRES SUB TOTAL	COEFF. C CA CA	TIME CONC. MIN. INLET DRAIN TOTAL	INTEN. I	Q+G.I.A. C.F.S.	PIPE SIZE	SLOPE	VEL.	LGTH.	REMARKS
WYE 1 A	21.07	.35	14.1	3.30	46.43	15"	.54	6.5	45'	20 YR.
WYE 2 B	0.97	.45	10	6.35	3.06	15"	.25	2.4	16'	20 YR.
WYE 3 A-B	22.04	.45	14.2	5.45	43.40	36"	.58	6.8	39'	
WYE 4 C	1.32	.45	10	6.95	4.13	15"	.45	3.3	6'	20 YR.
WYE 5 A-C	23.36	.45	14.3	5.45	51.61	36"	.68	7.3	88'	

SAMUEL M. PISTORIO
308-89

APPROVED
PLANNING COMMISSION
OF HOWARD COUNTY



OFFICE OF CHARLES D. GRACE
3-17-67 3026

PLANNING COMMISSION
5-16-67

ROADS DEPARTMENT
6-15-67

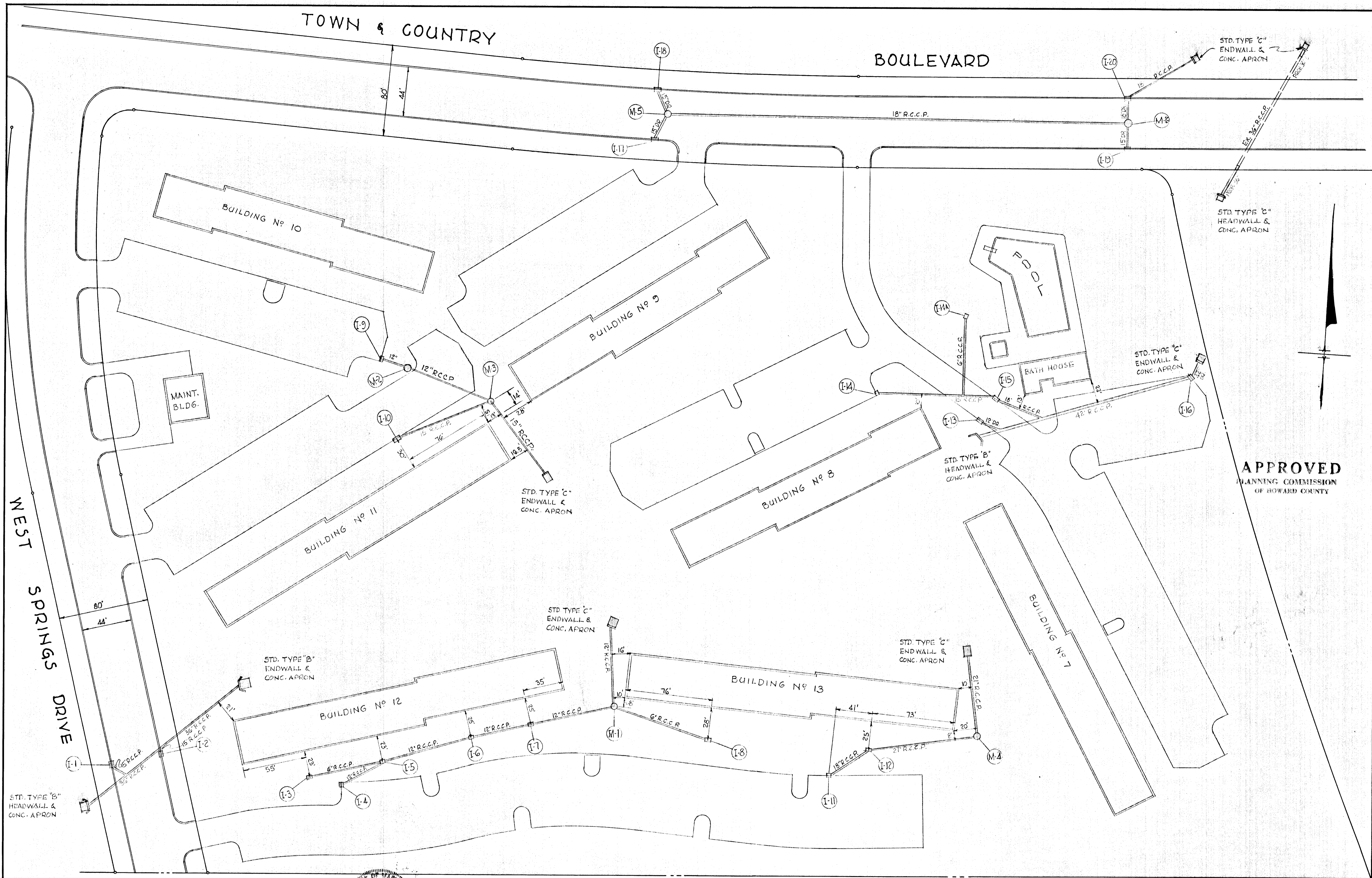
METROPOLITAN COMMISSION
APPROVED
DATE 5-17-67

HOWARD COUNTY DEPARTMENT OF PUBLIC WORKS - BUREAU OF ENGINEERING

WEST SPRINGS DRIVE

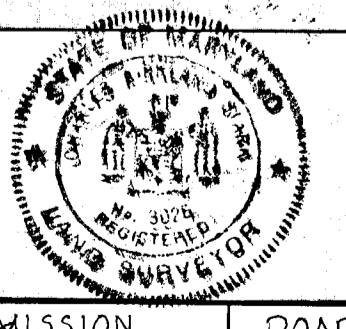
DISTRICT NO 2

SCALE
PLAN 1"=50'
PROFILES 1"=5'



APPROVED
PLANNING COMMISSION
OF HOWARD COUNTY

ROAD PERMIT AND GRADES		APPROVED FOR CITY OF BALTIMORE	
PERMIT REQUESTED	DATE	WATER ENGINEER	DIRECTOR OF PUBLIC WORKS
PERMIT NUMBER			
GRADE ESTABLISHED			
PROFILE NUMBER			
DATE	RIGHT OF WAY REF.	ENGINEER <i>Charles L. Bank</i> OFFICE OF CHARLES D. GRACE	PLANNING COMMISSION APPROVED <i>J. H. Dawson</i>
		REG. NO. 3026 DESIGNED C.K.S.	ROADS DEPARTMENT APPROVED <i>W. J. McNeil</i>
		DATE 3-17-67 DRAWN G.J. CHECKED R.G.	METROPOLITAN COMMISSION APPROVED <i>W. J. McNeil</i>



HOWARD COUNTY DEPARTMENT OF PUBLIC WORKS BUREAU OF ENGINEERING	STORM DRAINS PLAN & ELEVATION
DATE 5-16-67	DATE 5-15-67

DATE	REVISION	BY
DRAWING COMPLETED		
KEY SHEET	SHEET	J.O.
NO. 2		
PORTION SHEET	OF 3	FILE:

#8

