

29 AUG. 1966
Date

Approved: Howard County Planning Comm.
Senior Engineer
Approved: Howard County Roads Dept.
Roads Superintendent
Approved: Howard County Metropolitan Comm.
Chief Engineer

10-7-66
Date

10-7-66
Date

10-7-66
Date

Plan and Profile of Taylor Park Road
SECTION #4

RIVER PARK ESTATES

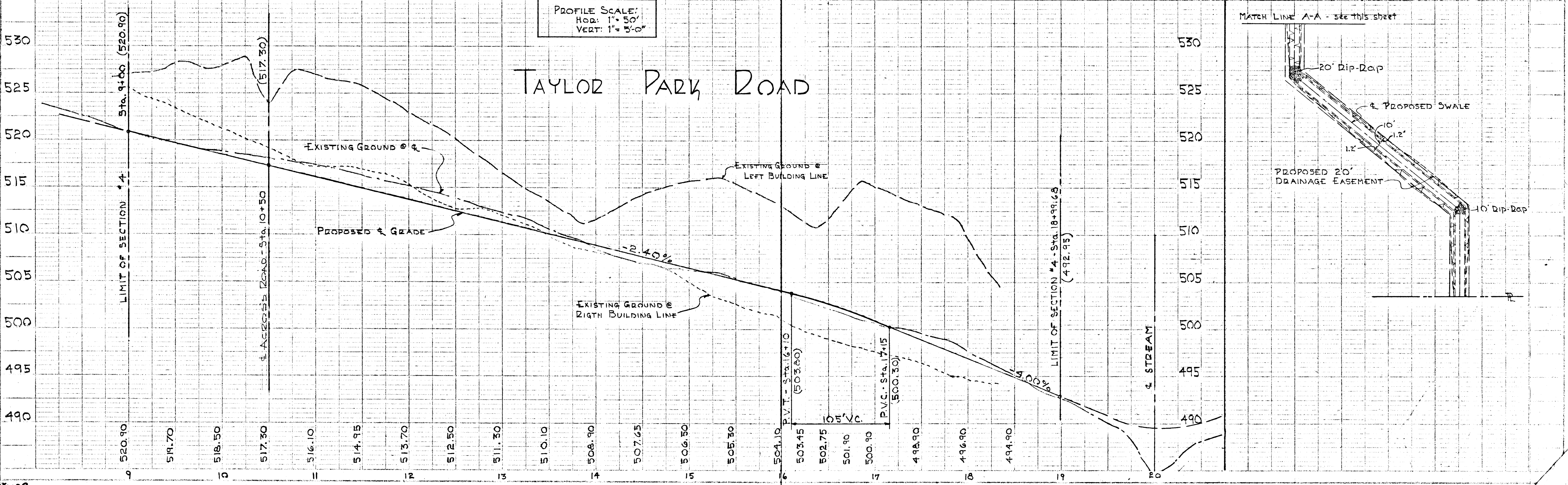
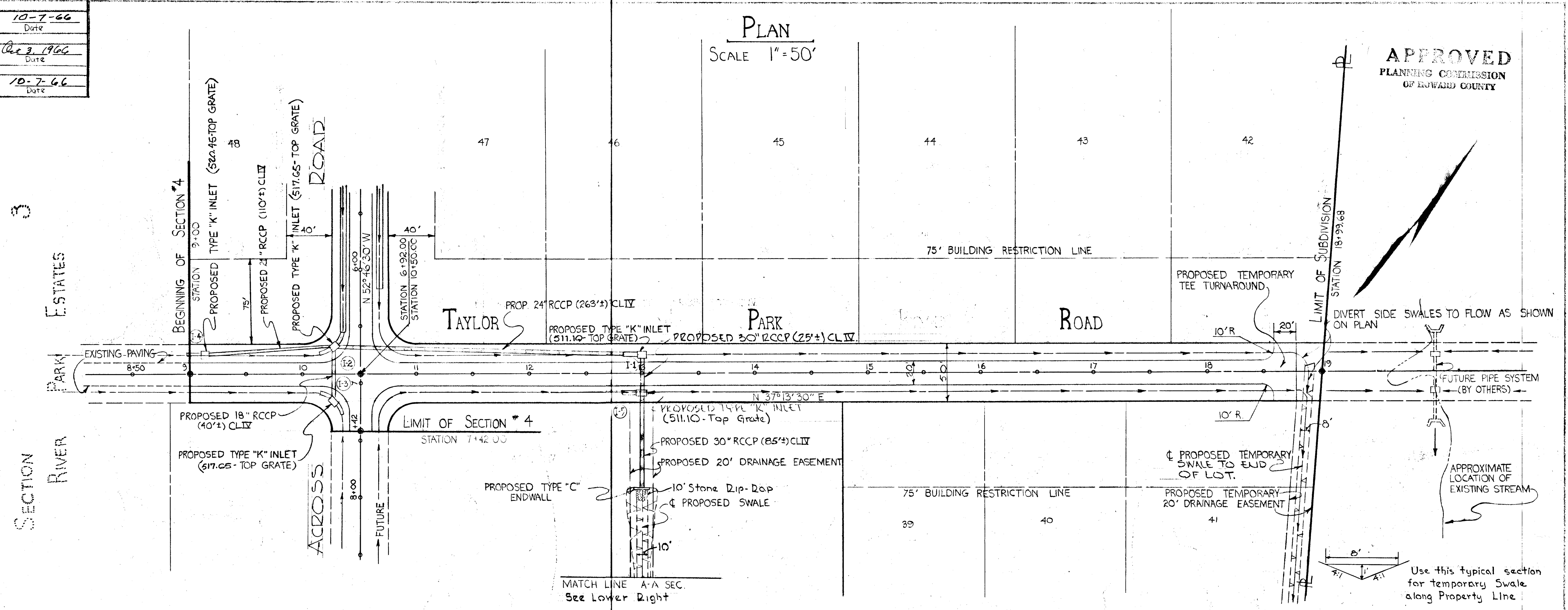
SEPT. 23, 1966 Scale as shown
3rd Election District of Howard County, Md.
Sheet 1 of 2

Owner & Developer
Ezn Catchings & Wife
1411 Winstone Avenue
Baltimore, Maryland 21212

Purdum & Jeschke
Engineers & Land Surveyors
24 Park Avenue
Ellicott City, Md. 21043

PLAN
SCALE 1" = 50'

APPROVED
PLANNING COMMISSION
OF HOWARD COUNTY



GENERAL NOTES:

- 1) For Roadway Section see Drawing D-2, page 57 of the Howard County Road Building Code and Standard Specifications.
- 2) For Details of type "V" Inlet see Drawing D-93, page 148, of the above mentioned Specifications.
- 3) For Details of type "C" Endwall see Drawing D-52, page 107, of the above mentioned Specifications.
- 4) For Details of 4' Wide Concrete Side Swale see Drawg. D-38; Page 93 of the above mentioned specifications.

PLAN & PROFILE - ACROSS ROAD SECTION #4

RIVER PARK ESTATES

3RD ELECTION DISTRICT - HOWARD CO., MD.
23 SEPT, 1966 SCALE: AS SHOWN
Sheet 2 of 2

APPROVED: HOWARD COUNTY PLANNING COMM.

J.H. Lawson Senior Engineer 10-7-66 Date

APPROVED: HOWARD COUNTY ROADS DEPT.

James H. Neff Roads Superintendent Oct 2, 1966 Date

APPROVED: HOWARD COUNTY METROPOLITAN COMM.

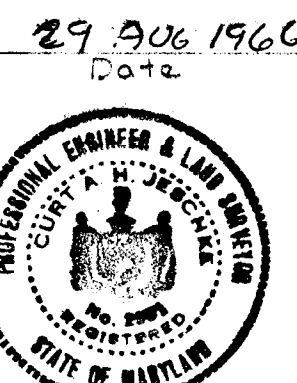
W.O. Hub Chief Engineer 10-7-66 Date

OWNER & DEVELOPER: PURDUM & JESCHKE ENGINEERS

BEN CATCHINGS & WIFE LAND SURVEYORS

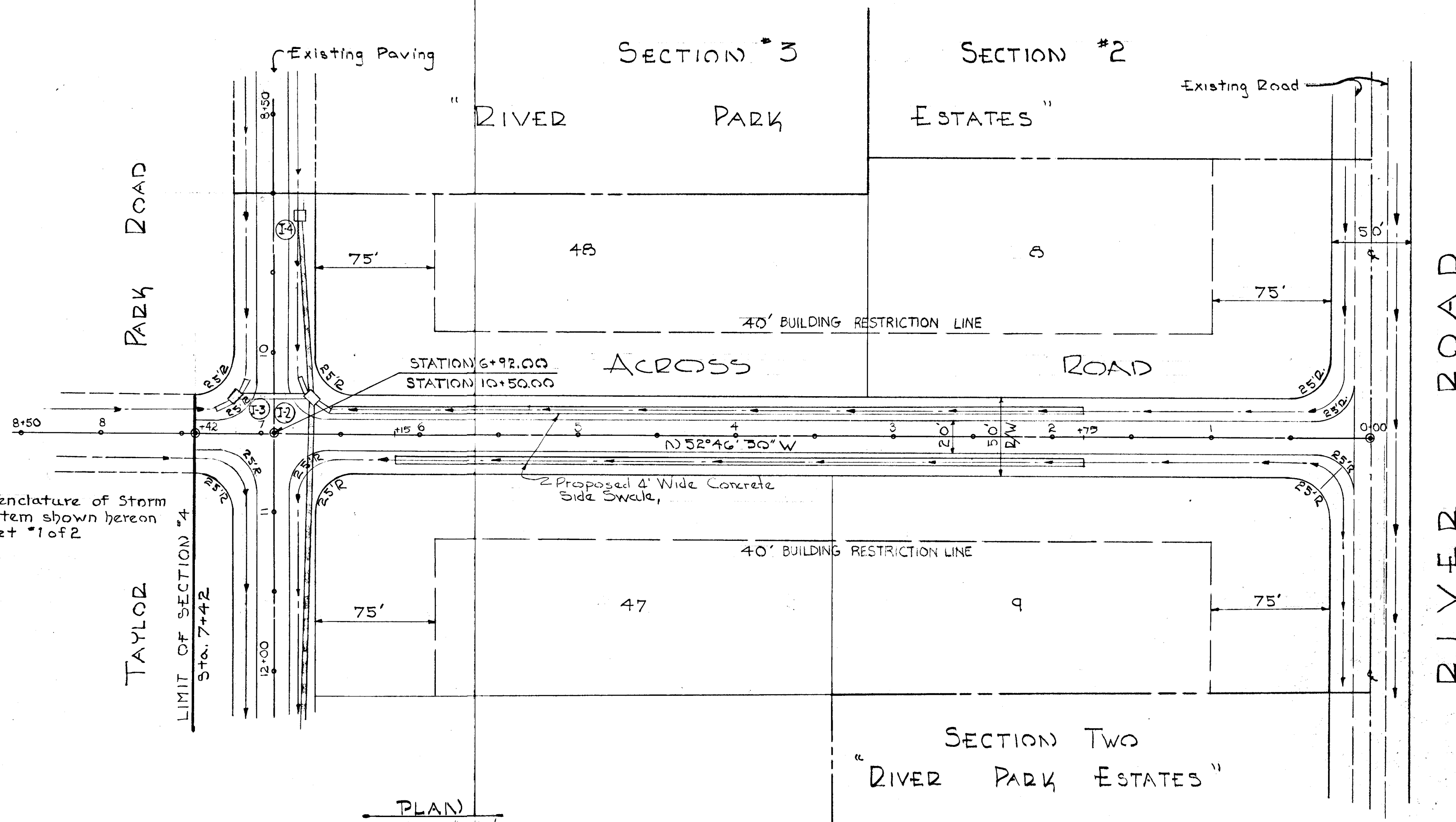
1411 WINSTONE AVENUE BALTIMORE, MARYLAND 21212

24 PARK AVENUE ELLICOTT CITY, MARYLAND



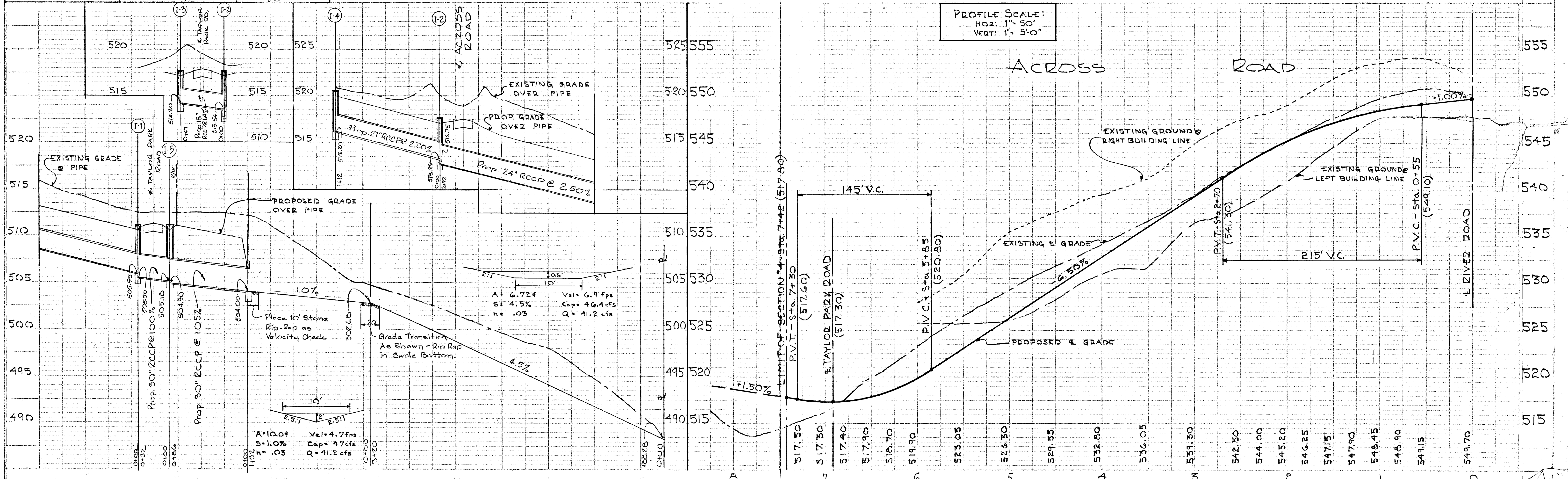
W.O. Hub 10-7-66

Note: For Nomenclature of Storm Drain System shown hereon see sheet #1 of 2



PLAN SCALE: 1" = 50'

APPROVED
PLANNING COMMISSION
OF HOWARD COUNTY



PROFILE SCALE:
HOR: 1" = 50'
VERT: 1" = 5'-0"