

Cut temporary channel to Prop. 21" RCP. End Support Wall to be removed or incorporated into future modification of existing box.

Opening for future Extension of Pipe

Existing Brick Box. Inside opening 8'x4'

Proposed Standlevel End Support Wall

Proposed 21" RCP (1.95%) CLIV

Existing 30" RCP

Proposed Brick Bend see Detail Below

Existing Brick Manhole

Existing 18" RCP

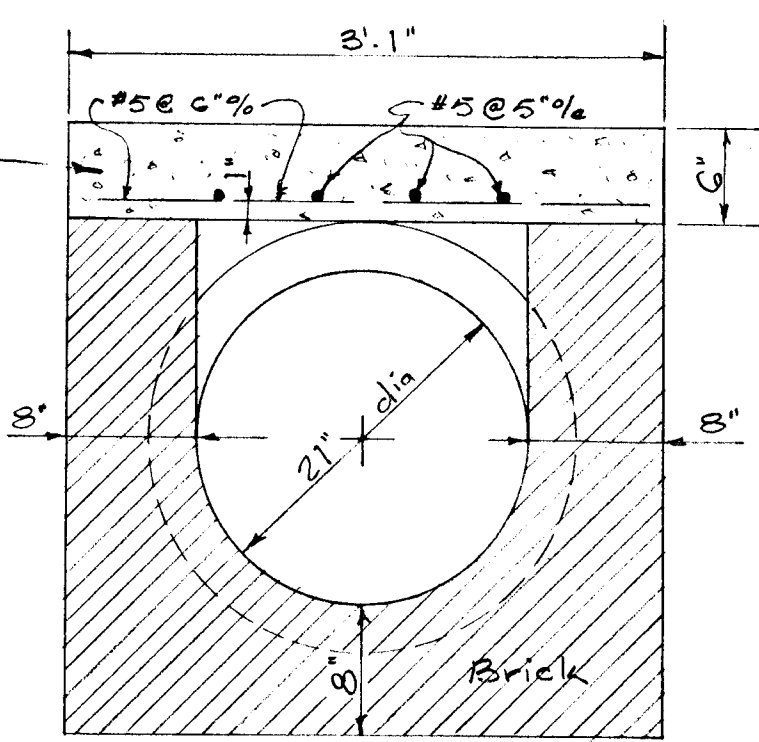
Existing 4'x4' Conc. Box Culvert

R/W LINE

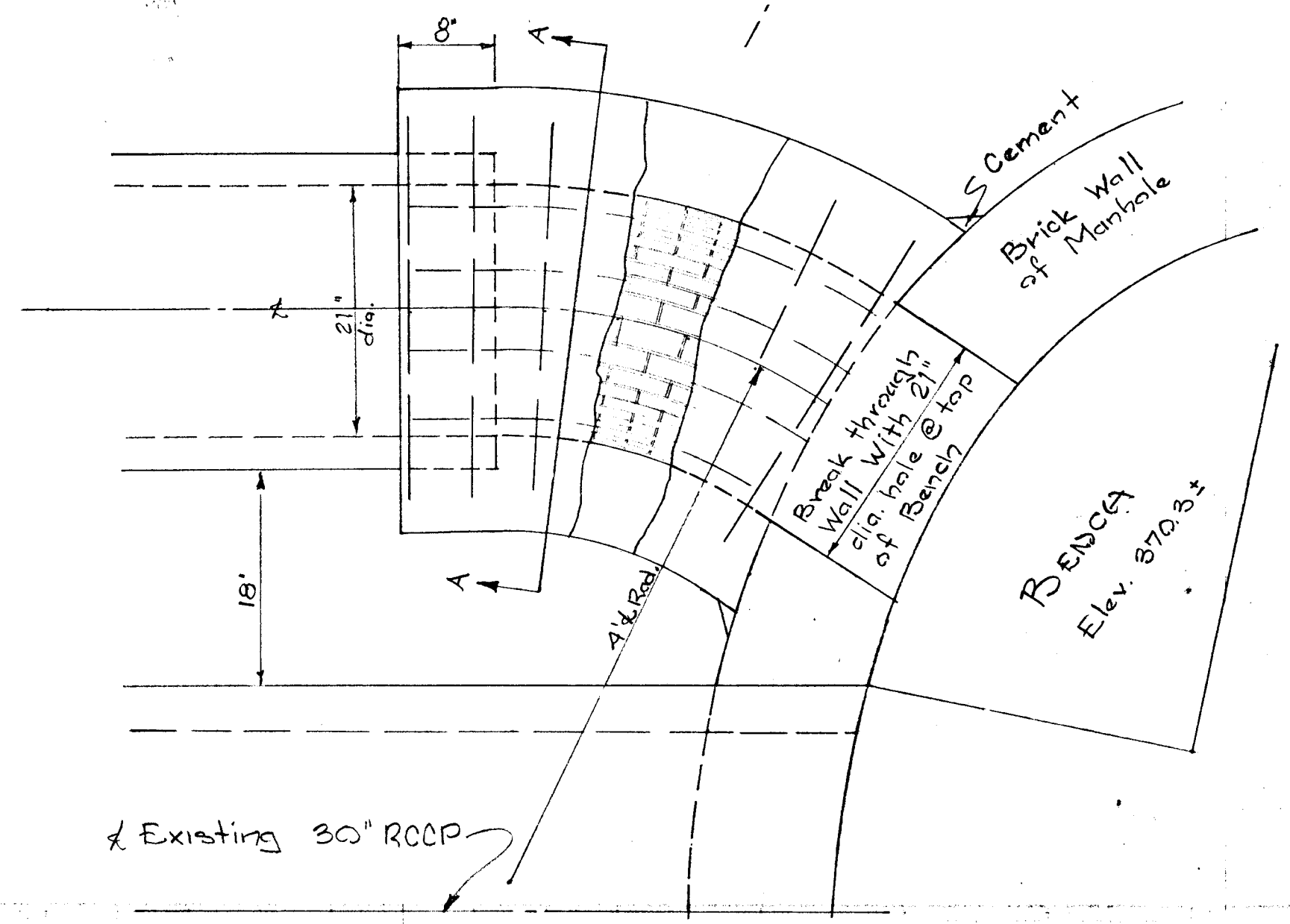
NOTE
End Support Wall to be built to standlevels found on page 101 of The Howard County Road Construction Code & Standard Specifications.

PLAN
SCALE: 1"=10'

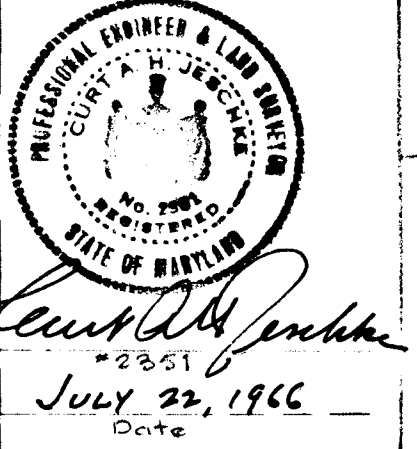
6" concrete slab flush with outside top of pipe



SECTION A-A
1"=10"



PLAN
1"=10"



OWNER & DEVELOPER
ALVA S. RAMSBURG, JR., ET AL.
207 RAMSEY DR.
ELLCOTT CITY, MD.

DETAILS OF ADDITIONAL PIPE
© RAMSBURG PROP
U.S. ROUTE 40
2ND ELECT. DIST. + HOWARD CO., MD
21 July 1966 Scale: As Shown

APPROVED: HOWARD COUNTY PLANNING COMMISSION
7-29-66
APPROVED: HOWARD COUNTY ROADS DEPARTMENT
July 29, 1966
APPROVED: HOWARD COUNTY METROPOLITAN COMM.
7-29-66

PORDUM & JESCAKE
24 PARK AVE
ELLCOTT CITY, MARYLAND

DETAILS OF BEND STRUCTURE
SCALE AS SHOWN

APPROVED
PLANNING COMMISSION
OF HOWARD COUNTY

PROFILE
Scale: Hor. 1"=50'
Vert. 1"=5'0"

