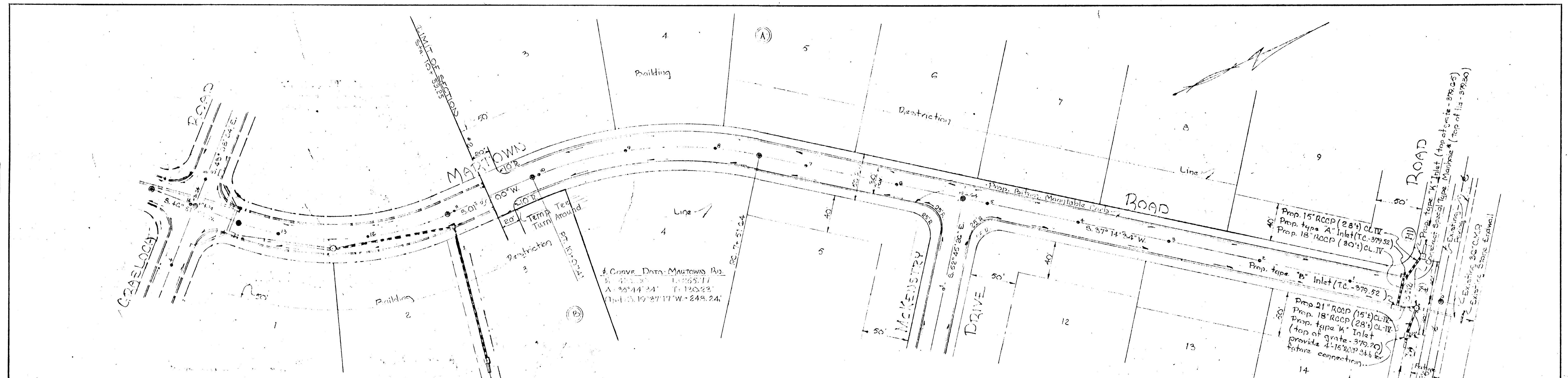


PLAN
 NO. 1
 DATE 3-29-66
 NOTE BOOK NO. 100
 RT. OF WAY CHECKED



OWNER: F. V. LOPEZ
 MARTOWN, INC.
 1111 MONTGOMERY RD
 ELICOTT CITY, MARYLAND

APPROVED (I) WARD OF PLANNING COMMISSION
 J. B. Clavin, Jr. 3-24-66
 Herman S. Hall 3-24-66
 W. O. LaPorte 3-29-66

PLAN & PROFILE: MARTOWN ROAD
 SECTION "Two"

WELLINGTON ESTATES

6TH ELECTION DISTRICT - HOWARD CO., MD.
 31 AUGUST 1965
 SCALE: AS SHOWN
 REV: 11 Oct 1965
 REV: 21 March 1965

PURDUM
 and
 JESCHKE
 ENGINEERS
 LAND SURVEYORS

11 Oct 1965
 DATE

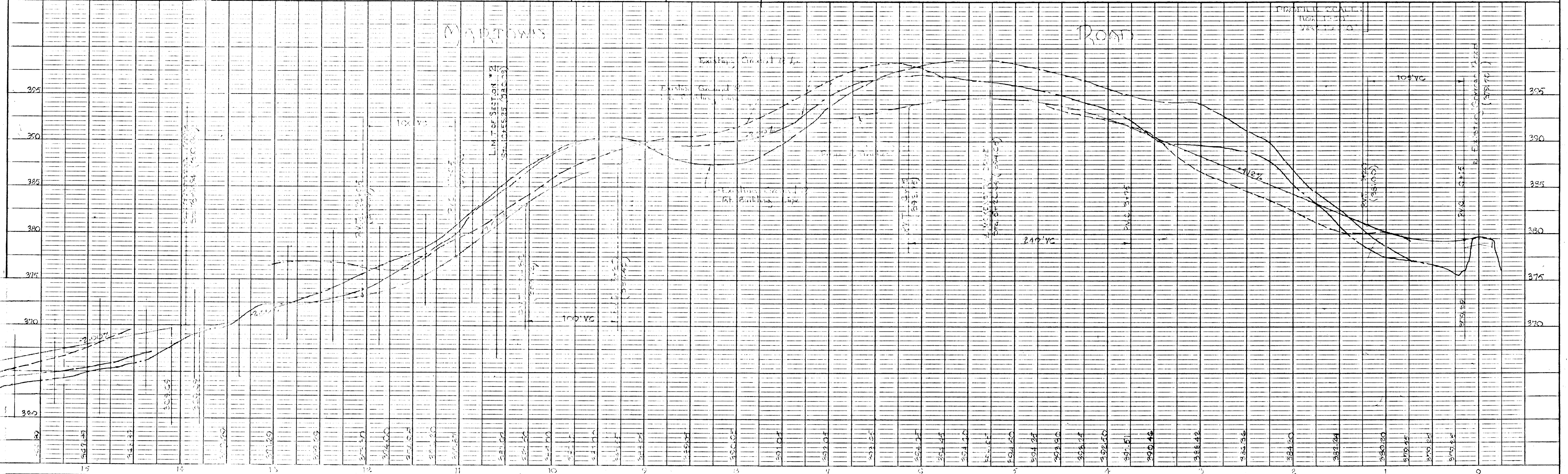
24 PARK AVE.
 ELICOTT CITY, MD.

1000
 W. O. LaPorte

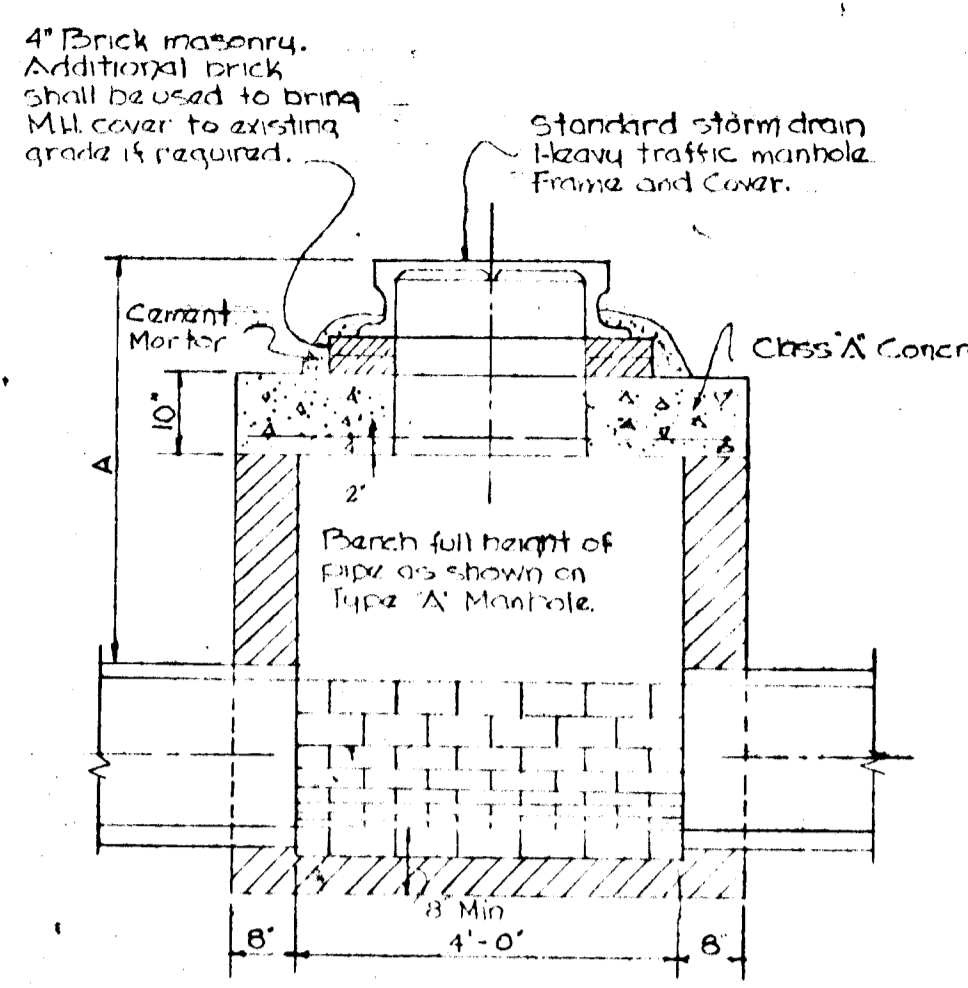
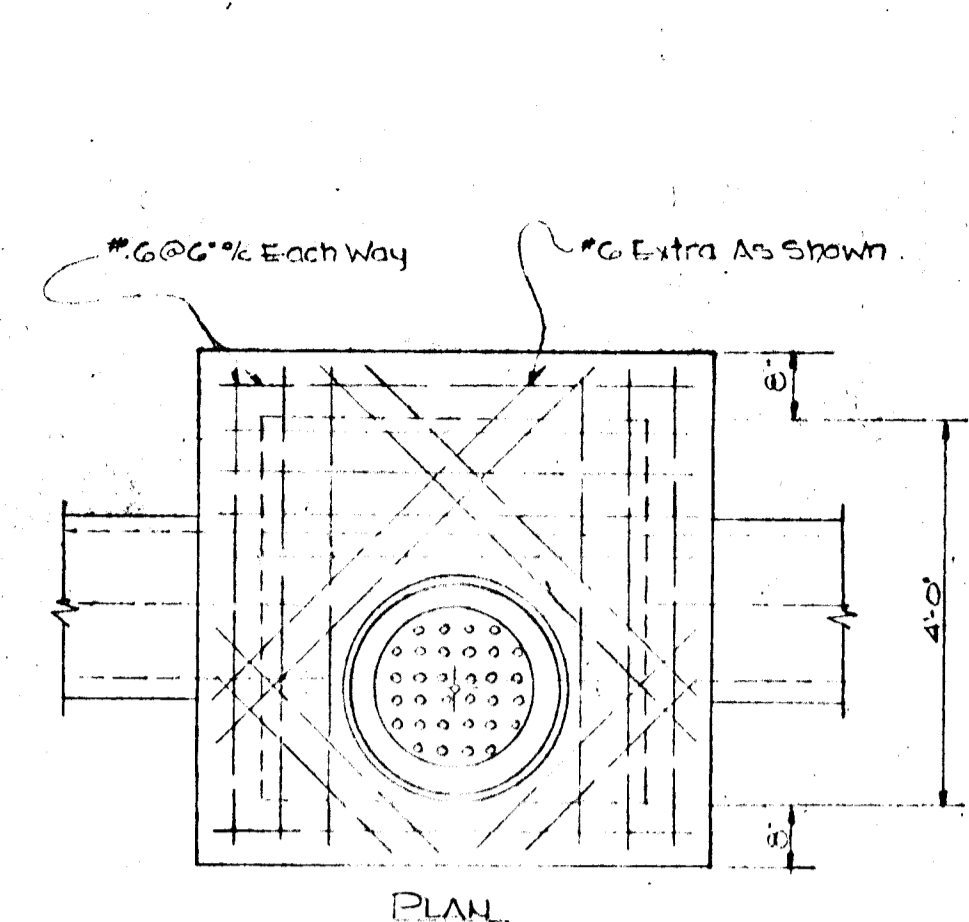
APPROVED
 PLANNING COMMISSION
 OF HOWARD COUNTY

PLAN
 SCALE: 1" = 30'

* Special type manhole to be built @ end of existing 30" CMB (Endwall to be removed), see detail sheet D-4.



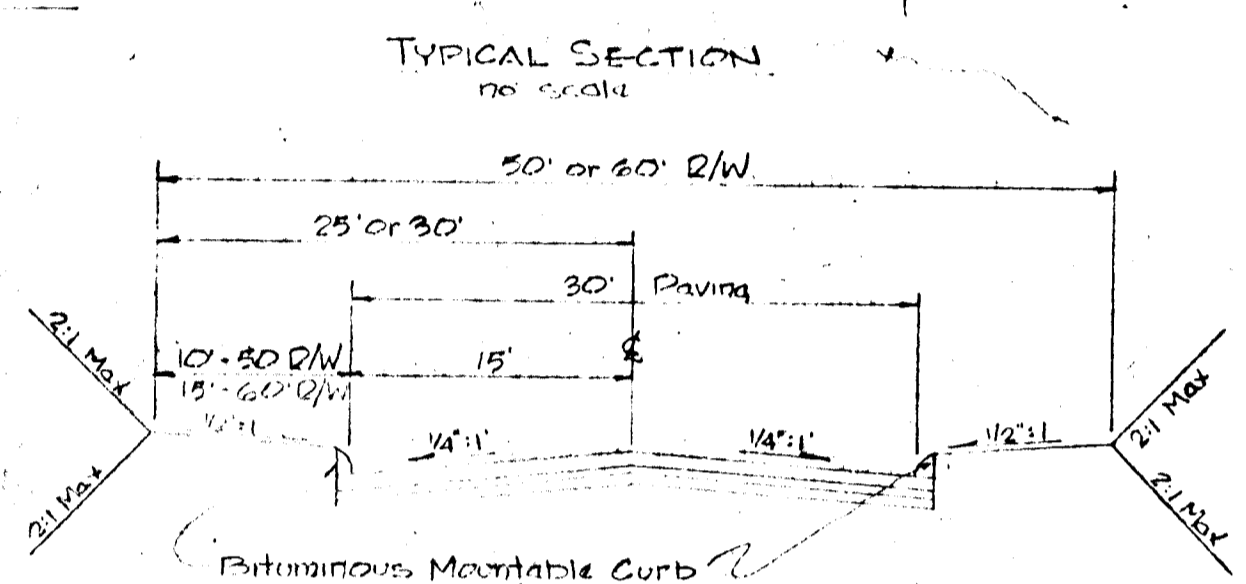
DATE _____
 BY _____
 SURVEYED _____
 PLOTTED _____
 NOTE BOOK _____
 NO. _____



- Notes:
1. Walls, bottom slab and invert shall be brick or plain Class 'A' concrete poured in place.
 2. Where A (cover) is greater than 3.5' use type 'A' Manhole.

NOTE: Manhole Frame And Cover To Be Placed As Shown.

DETAIL OF SPECIAL TYPE MANHOLE -
 NO SCALE



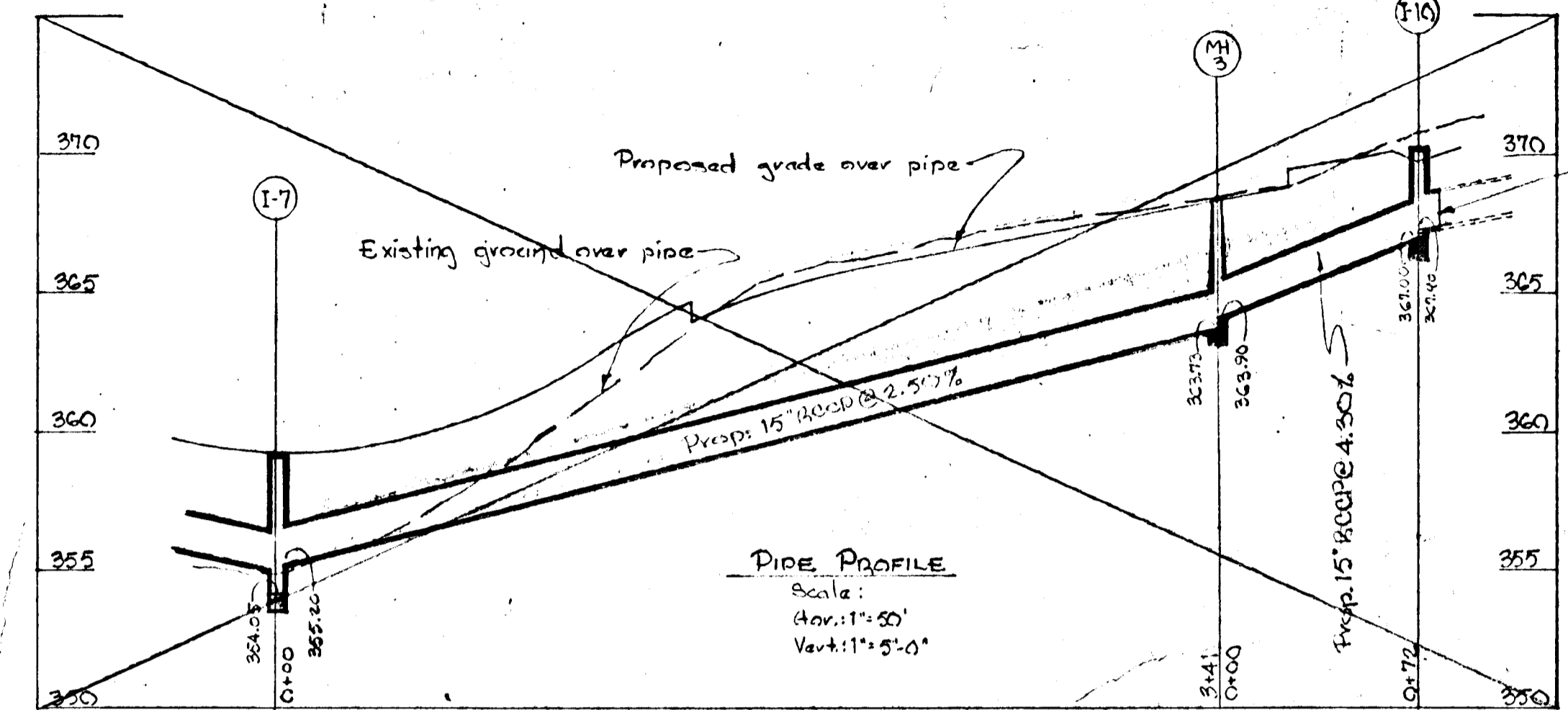
GENERAL NOTES

1) All following drawings & page nos refer to detail shown in

ITEM	DRAWING	PAGE
Bituminous Mount Curb	35	124
Std End Support Wall	46	101
12" End Wall	52	107
12" Comb Inlet	68	123
Standard MH	103	158
Temp Deadend Barricade	109	164

2) For Details of Double 'E' Comb Inlet, Type 'A' Inlet & Type 'B' Inlet, See attached 6 1/2" x 11" Sheets

Over 4%
 Maximum 2% of compacted bank run gravel M.S.D.C. Spec.
 2 1/2" calcium chloride per sq. yd. - min 30 days
 1 1/2" 3/4" coarse 1/2" bit concrete base course
 1" comp. conc. 1 1/2" bit concrete surface course



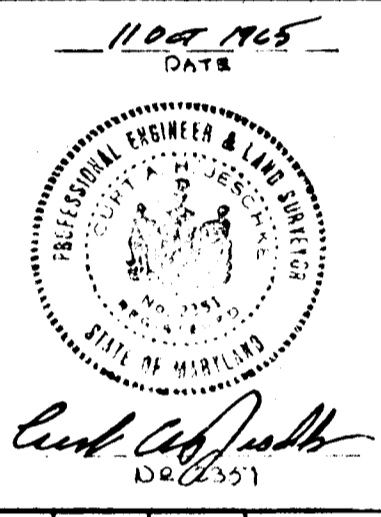
Provide slab for future extension (4' long 15" Recp @ 2.00%) exp w/ conc.

APPROVED
 PLANNING COMMISSION
 OF HOWARD COUNTY

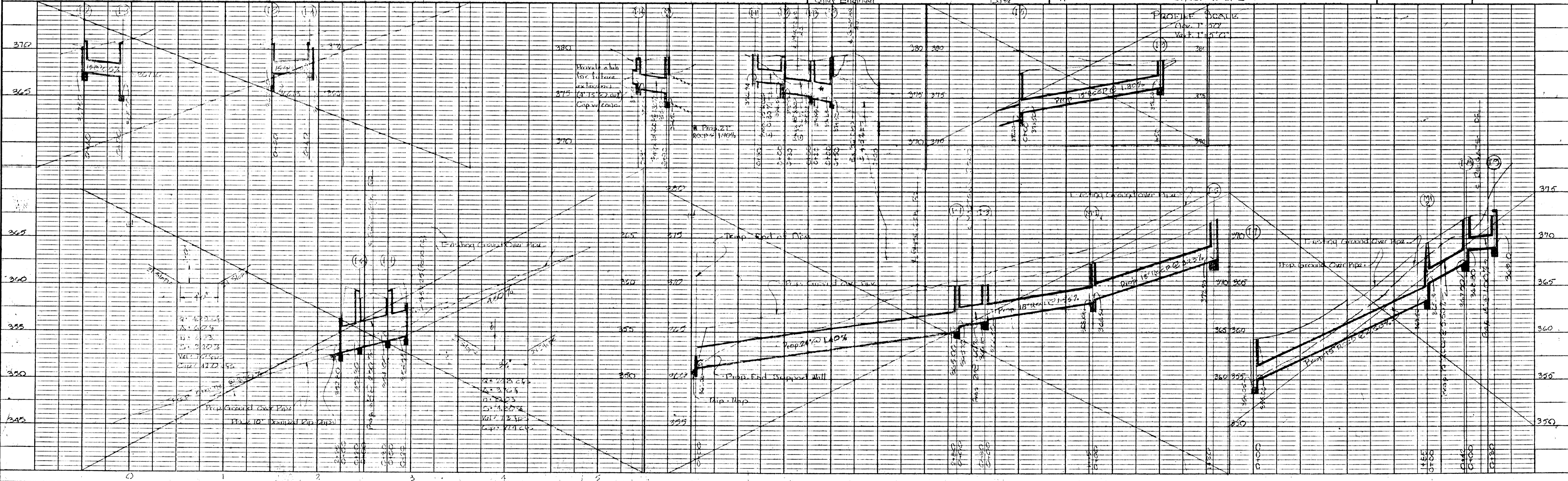
Approved: Howard County Planning Comm.
 J. H. Clawson, Jr. Senior Engineer 3-24-66 Date
 Approved: Howard County Highway Dept.
 Herman Schell Roads Engineer 3-24-66 Date
 Approved: Howard County Metropolitan Comm.
 W. O. Pollock Chief Engineer 3-29-66 Date

DRAINAGE PROFILES & DETAILS
 SECTION "Two"
WELLINGTON ESTATES
 6TH ELECTION DISTRICT HOWARD CO., MD.
 31 AUGUST 1965
 REV: 11 OCT 1965
 REV: 9 NOV 1965
 SCALE: AS SHOWN
 SHEET 2 OF 3

PURDUM
 &
 JESCHKE
 ENGINEERS
 24 PARK AVENUE
 ELLICOTT CITY, MD.

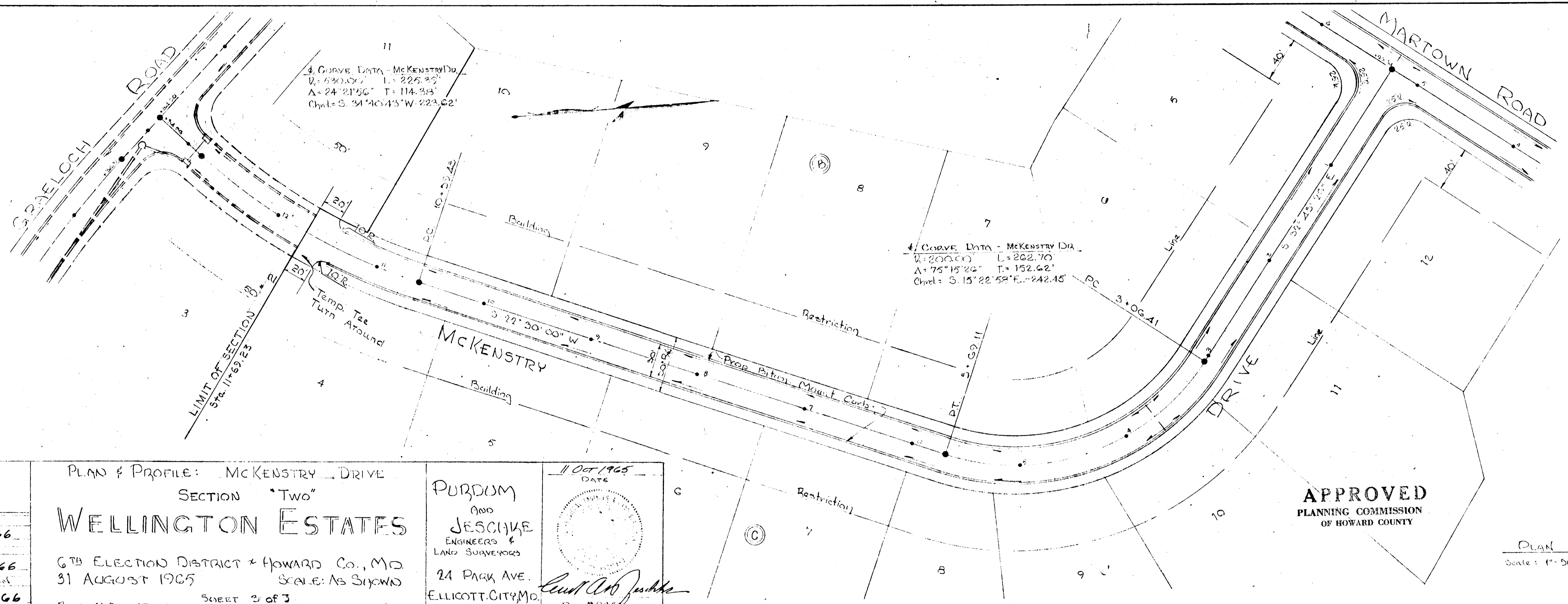


DATE _____
 BY _____
 SURVEYED _____
 PLOTTED _____
 NOTE BOOK _____
 NO. _____



PLAN
 SURVEYED
 5. M.I. NOTED
 STRUC. PROC. NOTATIONS CHECKED
 NO. DATE

PROFILE
 SURVEYED
 5. M.I. NOTED
 STRUC. PROC. NOTATIONS CHECKED
 NO. DATE



OWNER & DEVELOPER
 MARTOWN, INC.
 RFD #1 MONTGOMERY RD.
 ELLICOTT CITY, MARYLAND

APPROVED BY HOWARD CO. PLANNING COMMISSION
 3-24-66

APPROVED BY HOWARD CO. ZONING DEPARTMENT
 3-24-66

APPROVED BY MARYLAND DEPARTMENT OF TRANSPORTATION
 3-29-66

PLAN & PROFILE: MCKENSTRY DRIVE
 SECTION "Two"
WELLINGTON ESTATES
 6TH ELECTION DISTRICT + HOWARD CO., MD
 31 AUGUST 1965
 SCALE: AS SHOWN

REV: 11 OCT. 1965
 REV: 21 MARCH 1966

SHEET 2 OF 3

PURDUM
 AND
 JESCHKE
 ENGINEERS &
 LAND SURVEYORS
 24 PARK AVE.
 ELLICOTT CITY, MD.

11 Oct 1965
 DATE

Count Rob Juchka
 26. 11. 1965

