

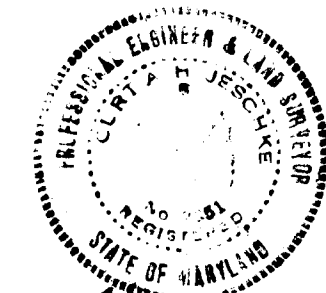
PLAN
SCALE 1"=50'

§ CURVE DATA
R=500.00' L=68.40'
TAN=34.25' Δ=07°50'15"
CHD=34°25'06"W-68.34'

OWNER & DEVELOPER
CHATHAM CORP of HOWARD CO
687 BALTO NATIONAL PIKE
ELLICOTT CITY - MARYLAND

SECTION 4
PLAN & PROFILE of: HAYFIELD DR.

PURDUM & JESCHKE
ENGINEERS



"CHATHAM"
SECOND ELECTION DISTRICT - HOWARD COUNTY, MD.
SEPT. 15, 1965

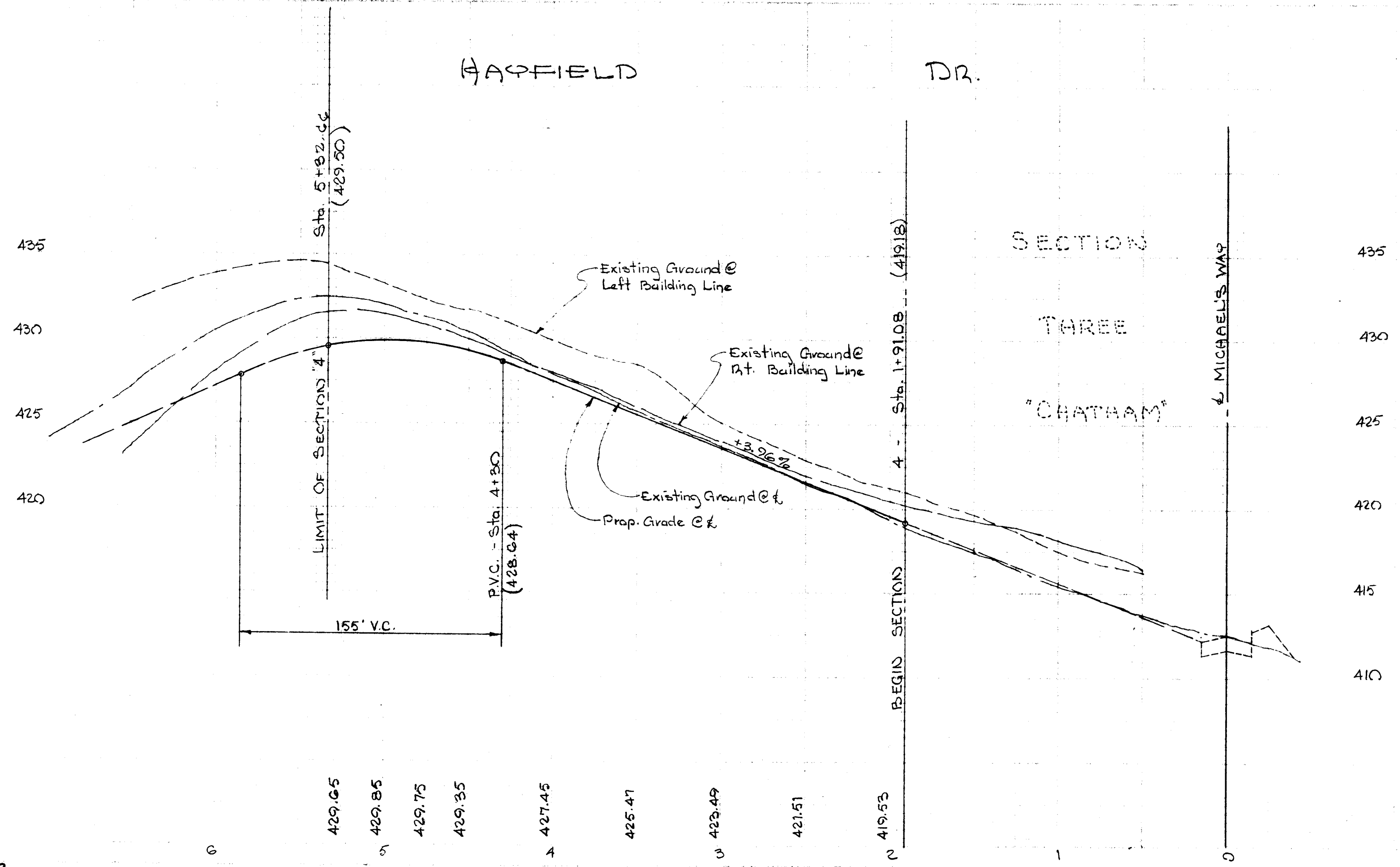
24 PARK AVENUE
ELLICOTT CITY, MD.

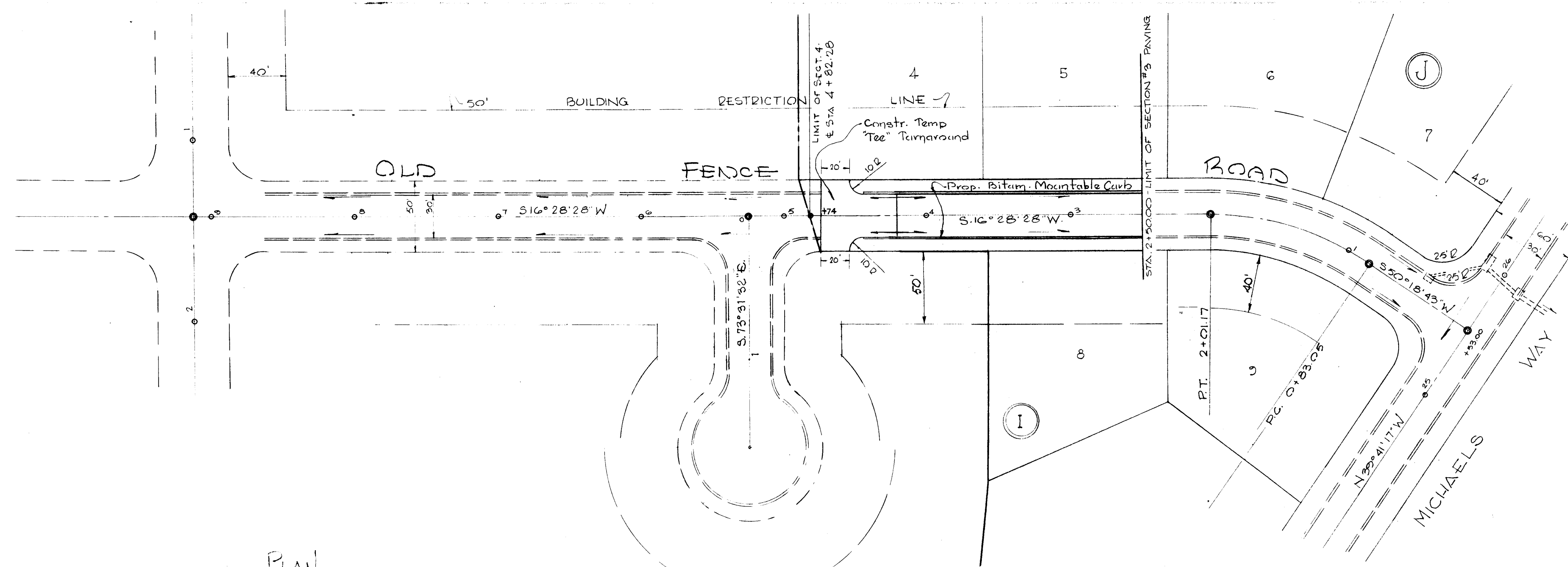
SHEET # 2

APPROVED: HOWARD COUNTY PLANNING COMMISSION
PLANNING ENGINEER
APPROVED: HOWARD COUNTY HIGHWAY DEPARTMENT
ROADS ENGINEER
APPROVED: HOWARD COUNTY METROPOLITAN COMMISSION
CHIEF ENGINEER

APPROVED
PLANNING COMMISSION
OF HOWARD COUNTY

PLAN SCALE: 1"=50'
PROFILE hor. scale: 1"=50'
ver. scale: 1"=5'





PLAN
SCALE 1" = 50'

APPROVED
PLANNING COMMISSION
OF HOWARD COUNTY

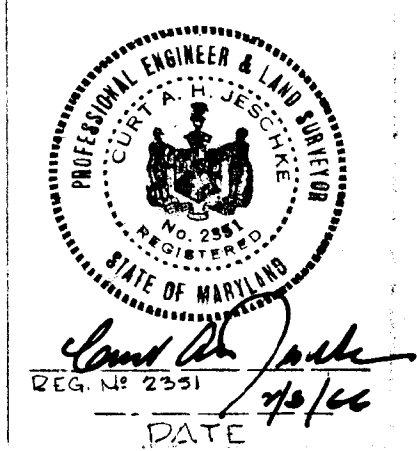
- GENERAL NOTES:
- 1) For typical paving section see drwg. D-15, page 70; Howard Co. Road Construction Code.
 - 2) For Bituminous Mount Curb see drwg. D-39, page 94; above mentioned Code.
 - 3) If there is a zoning change on any of the lots shown on these plans, to less than L-2C, the typical section found on drwg. D-2C, page 76 of the above mentioned standard specs. shall be used along the fronts of any lots with said zoning change.

APPROVED HOWARD COUNTY PLANNING COMMISSION	
<i>J. H. Clawson</i> PLANNING ENGINEER	DATE 2-14-66
APPROVED: HOWARD COUNTY HIGHWAYS COMMISSION	
<i>Ernest M. McLeod</i> ROADS ENGINEER	DATE 2-14-66
APPROVED: HOWARD COUNTY METROPOLITAN COMMISSION	
<i>W. O. Fallick</i> CHIEF ENGINEER	DATE 2-11-66

OWNER & DEVELOPER
CHATHAM CORP. OF HOWARD CO
687 BALTO NATIONAL PIKE
ELLICOTT CITY, MARYLAND

SECTION 4
PLAN & PROFILE OF: OLD FENCE RD.
"CHATHAM"
SECOND ELECTION DISTRICT - HOWARD COUNTY, MARYLAND
SEPT. 15, 1965
SCALE: AS SHOWN
SHEET # 1

PUZDUM & JESCHKE
ENGINEERS
24 PARK AVENUE
ELLICOTT CITY, MD.



PROFILE SCALE:
HOR: 1" = 50'
VERT: 1" = 5'

