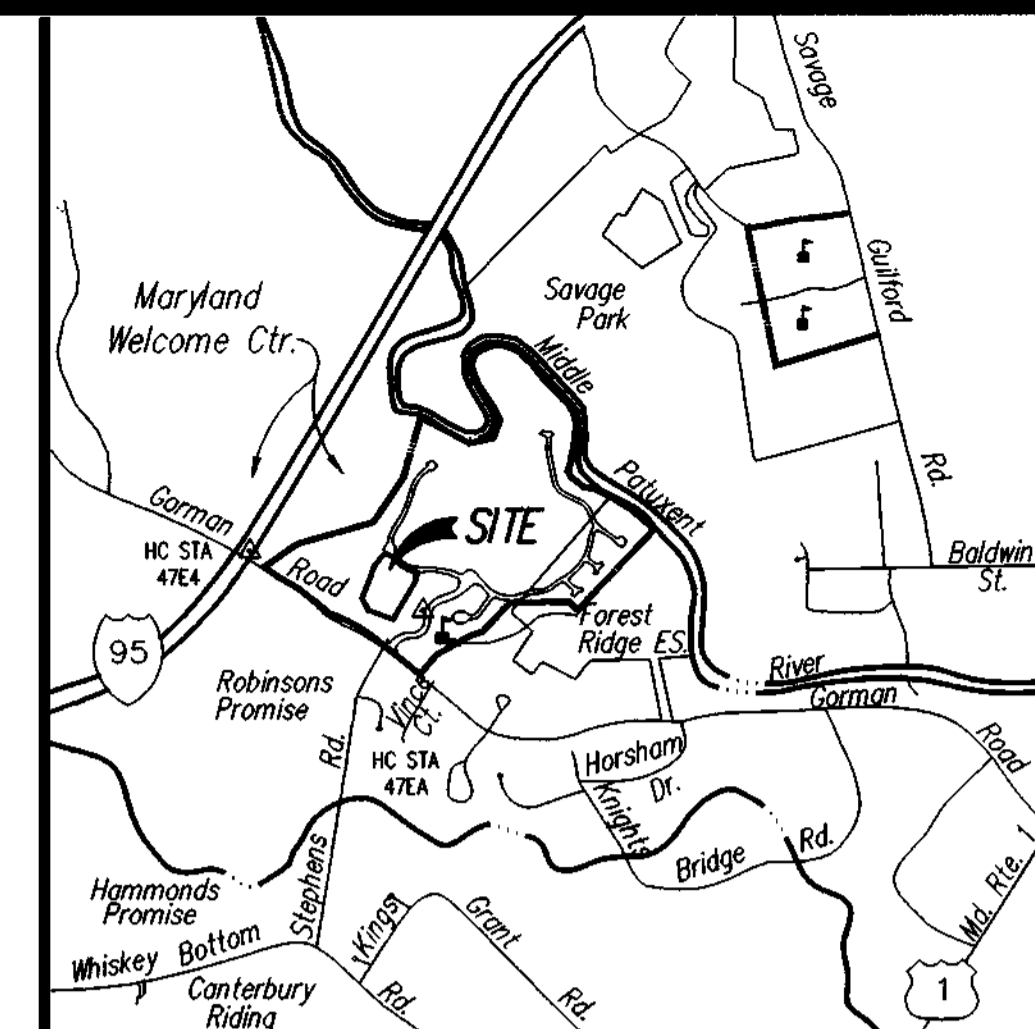


GENERAL NOTES

- THE PROJECT IS IN CONFORMANCE WITH THE LATEST HOWARD COUNTY STANDARDS UNLESS WAIVERS HAVE BEEN APPROVED.
- PROJECT BACKGROUND:
LOCATION: BOULDER RIDGE
TAX MAP: 47-9/10
ZONING: R-ED
ELECTION DISTRICT: 6
GROSS AREA OF TRACT: 5.42 ACRES
- SEE DEPARTMENT OF PLANNING & ZONING FILE NUMBERS:
S 00-13, WP 01-60, PB 345, P 01-15, P 01-24,
F 01-177, F 01-185 AND F 01-204.
- THE TOPOGRAPHY SHOWN HAS A 2' CONTOUR INTERVAL AND WAS DETERMINED BY: AERIAL PHOTOGRAPHY BY DAFT, McGINN & WALKER, SUMMER 1998.
- PUBLIC WATER AND SEWER TO BE UTILIZED. SITE IS IN METROPOLITAN DISTRICT. EXISTING WATER AND SEWER APPROVED UNDER CONTRACT # 34-3947-D.
- HORIZONTAL AND VERTICAL CONTROL BASED ON HOWARD COUNTY CONTROL STATIONS 47 EA & 47 E4.
- INFORMATION CONCERNING UNDERGROUND UTILITIES WAS OBTAINED FROM BEST AVAILABLE RECORDS. THE CONTRACTOR MUST DETERMINE THE EXACT LOCATION AND ELEVATION OF THE MAINS BY DIGGING TEST PITS BY HAND AT ALL CROSSINGS WELL IN ADVANCE OF CONSTRUCTION. ANY DISCREPANCIES MUST BE COMMUNICATED TO THE ENGINEER AT ONCE.
- ALL CONSTRUCTION SHALL BE IN ACCORDANCE WITH THE LATEST STANDARDS AND SPECIFICATIONS OF HOWARD COUNTY AND MSHA STANDARDS AND SPECIFICATIONS, IF APPLICABLE.
- THE CONTRACTOR SHALL NOTIFY THE DEPARTMENT OF PUBLIC WORKS /DIVISION OF CONSTRUCTION INSPECTION AT (410) 313 - 1890 AT LEAST FIVE (5) DAYS PRIOR TO THE START OF WORK.
- THE CONTRACTOR SHALL NOTIFY THE FOLLOWING UTILITIES OR AGENCIES AT LEAST FIVE (5) WORKING DAYS BEFORE STARTING WORK SHOWN ON THE PLANS.
MISS UTILITY 1-800-257-7777
VERIZON 1-800-449-5286
HOWARD COUNTY BUREAU OF UTILITIES 410-313-4900
AT&T CABLE LOCATION DIVISION 393-3553
BALTIMORE GAS & ELECTRIC CO. 410-850-4620 & 410-787-9068
- STORM DRAIN STRUCTURE TYPES AND STANDARD DETAIL REFERENCES ARE TAKEN FROM THE HOWARD COUNTY DESIGN MANUAL, VOL. IV OR THE MDSA BOOK OF STANDARDS.
- TRENCH COMPACTION FOR STORM DRAINS WITHIN ROADS AND STREET RIGHT - OF - WAYS LIMITS SHALL BE IN ACCORDANCE WITH "HOWARD COUNTY DESIGN MANUAL", VOL. IV, STANDARD G-2.01.
- SEDIMENT CONTROL SHALL BE PROVIDED IN ACCORDANCE WITH " 1994 MARYLAND STANDARDS AND SPECIFICATION FOR SOILS EROSION AND SEDIMENT CONTROL".
- TRAFFIC CONTROL DEVICES, MARKINGS, AND SIGNING SHALL BE IN ACCORDANCE WITH THE LATEST EDITION OF THE MANUAL ON UNIFORM TRAFFIC CONTROL DEVICES (MUTCD).
- STREET TREES SHALL BE PLANTED A MINIMUM OF FIVE (5) FEET FROM STORM DRAIN, WATERLINE OR SEWER PIPE MANHOLES; ALSO A MINIMUM OF TWENTY (20) FEET FROM STREET LIGHTS.
- COMPACTION IN FILL AREAS SHALL BE IN ACCORDANCE WITH AASHTO T-180 OR AS APPROVED IN THE DESIGN MANUAL VOLUME IV.
- THERE ARE NO STEEP SLOPES, WETLANDS, STREAMS, FLOODPLAIN OR ASSOCIATED BUFFERS ON THIS PARCEL.
- APFO REQUIREMENTS FOR STONE LAKE WERE ADDRESSED UNDER S-00-13 WHICH WAS APPROVED ON 10/19/2000.
- ALL ROADS AND STORM DRAINS IN THIS DEVELOPMENT ARE PRIVATELY OWNED AND MAINTAINED.
- STREET TREE LOCATIONS SHOWN ARE TENTATIVE AND ARE TO BE USED FOR BOND PURPOSES ONLY. THE FINAL LOCATION AND VARIETY OF TREES MAY VARY TO ACCOMMODATE FIELD CONDITIONS AND BUILDERS LANDSCAPE PROGRAM.
- NO INTERIOR LANDSCAPING IS REQUIRED. SINGLE FAMILY ATTACHED INTERNAL LANDSCAPING WILL BE ADDRESSED WITH THE SITE DEVELOPMENT PLAN.
- ON JANUARY 16, 2001, WP 01-60, WAIVER OF SECTION 16.120 c (2) WAS GRANTED WHICH REQUIRES ALL LOTS TO HAVE FRONTAGE ON A PUBLIC ROAD, AND SECTION 16.120 c (4) WHICH LIMITS THE LENGTH OF A PRIVATE ROAD FOR SFA UNITS TO 200, SUBJECT TO ONE CONDITION IN THE APPROVAL LETTER.
- THE PROPOSED STORM DRAIN SYSTEM AS SHOWN ON THESE PLANS IS PRIVATE AND WILL BE OWNED & MAINTAINED BY THE HOME OWNER'S ASSOCIATION.
- F 01-177 WILL BE PROVIDING INTERIM STORMWATER MANAGEMENT ON PARCEL E AND F 01-204 WILL BE PROVIDING PERMANENT STORMWATER MANAGEMENT ON LOT 118. THE FACILITY WILL UTILIZE RETENTION/DETENTION (WET FACILITY) AND WILL BE PRIVATELY OWNED AND MAINTAINED.
- OPEN SPACE REQUIREMENTS FOR STONE LAKE HAVE BEEN ADDRESSED UNDER F-01-177.
- FOREST CONSERVATION REQUIREMENTS FOR STONE LAKE HAVE BEEN ADDRESSED UNDER F-01-177 AND F 01-204.
- NOISE 654BA DOES NOT AFFECT PROPOSED LOTS.

CONSTRUCTION PLAN FOR STONE LAKE LOTS C-1 THRU C-39 TIMBER OAK LANE

- LEGEND
- EXISTING STREET LIGHT
 - PROPOSED STREET LIGHT
 - PROP. TOP OF CURB ELEVATION
 - EX. 12" W EXISTING WATER MAIN
 - EX. 12" S EXISTING SEWER MAIN
 - EX. 18" SD EXISTING STORM DRAIN
 - EXIST. CURB/CURB & GUTTER
 - STD. MODIFIED CURB & GUTTER
 - REV. MODIFIED CURB & GUTTER
 - EXISTING PAVING
 - PROPOSED PAVING
 - EXISTING CONTOUR
 - PROPOSED CONTOUR
 - EXISTING STREET TREES
 - PROPOSED STREET TREES

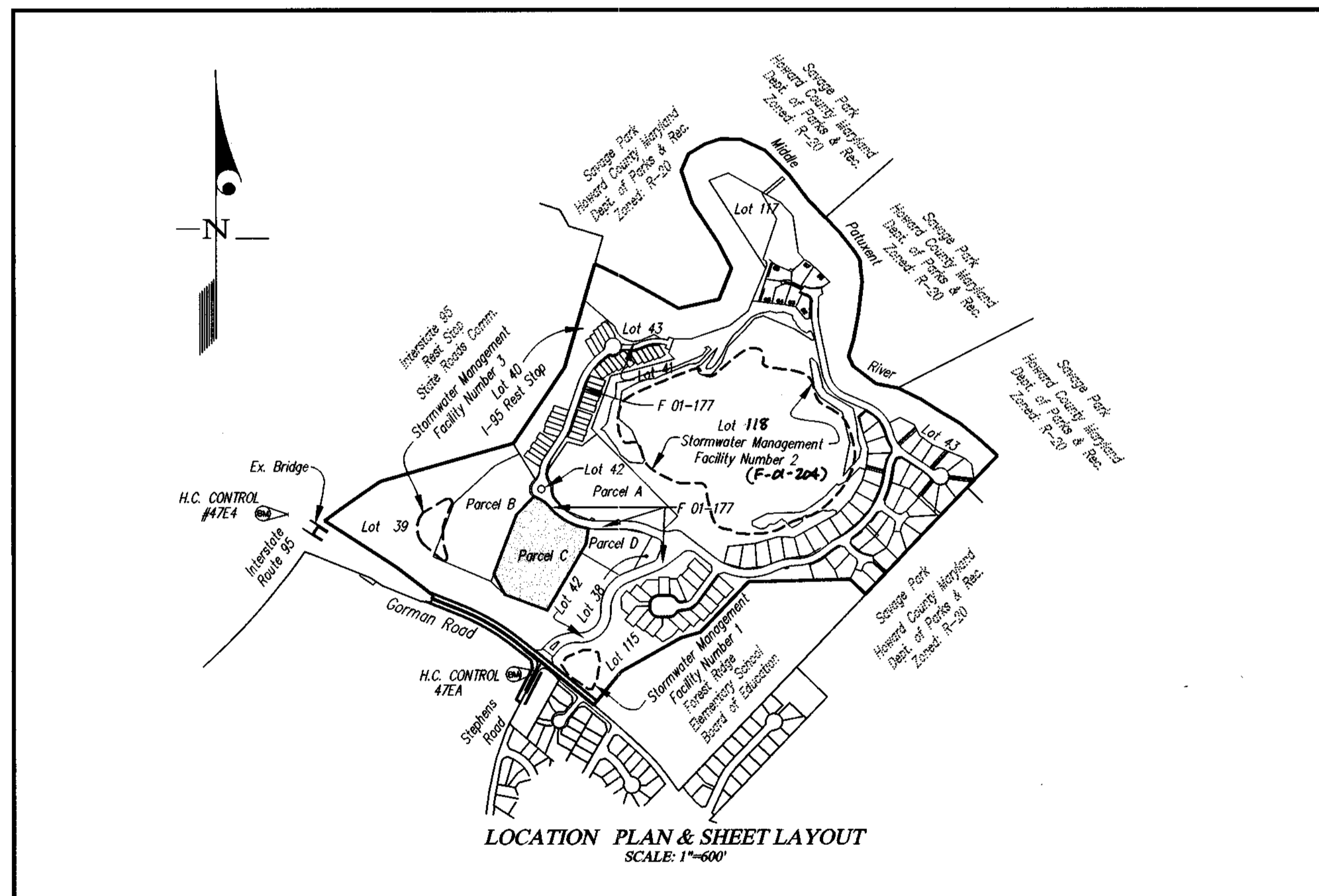


Howard County Control Station: 47EA
N 535063.631
E 1357283.989
Elev. = 315.28

Howard County Control Station: 47E4
N 535846.138
E 1355431.196
Elev. = 338.91

SHEET INDEX

- Cover Sheet
- Road Plan & Profile
- Mass Grading/Sediment Control Plan
- Drainage Area Map
- Storm Drain Profiles
- Detail Sheet
- Sediment Control Detail Sheet



APPROVED: HOWARD COUNTY DEPARTMENT OF PUBLIC WORKS
N/A No Public Facilities
Chief, Bureau of Highways *HS* Date _____

APPROVED: HOWARD COUNTY DEPARTMENT OF PLANNING & ZONING
Conda Brant *3/8/02*
Chief, Division of Land Development Date _____
John O'Connell *3/7/02*
Chief, Development Engineering Division Date _____



GLW GUTSCHICK LITTLE & WEBER, P.A.
CIVIL ENGINEERS, LAND SURVEYORS, LAND PLANNERS, LANDSCAPE ARCHITECTS
3909 NATIONAL DRIVE - SUITE 250 - BURTONSVILLE OFFICE PARK
BURTONSVILLE, MARYLAND 20866
TEL: 301-421-4024 BALT: 410-880-1820 DC/VA: 301-989-2524 FAX: 301-421-4186

OWNER:
GOODIER BUILDERS
10705 CHARTER DRIVE
SUITE 320
COLUMBIA, MD 21044
PH: 410-997-7400
ATTN: MR. STEVE APPLER

COVER SHEET

STONE LAKE
LOTS C-1 THRU C-39
A Resubdivision of Parcel C
PLAT #

SCALE AS SHOWN	ZONING R-ED	G. L. W. FILE No. 01075
DATE 1/24/02	TAX MAP - GRID 47 - 9/10	SHEET 1 OF 7

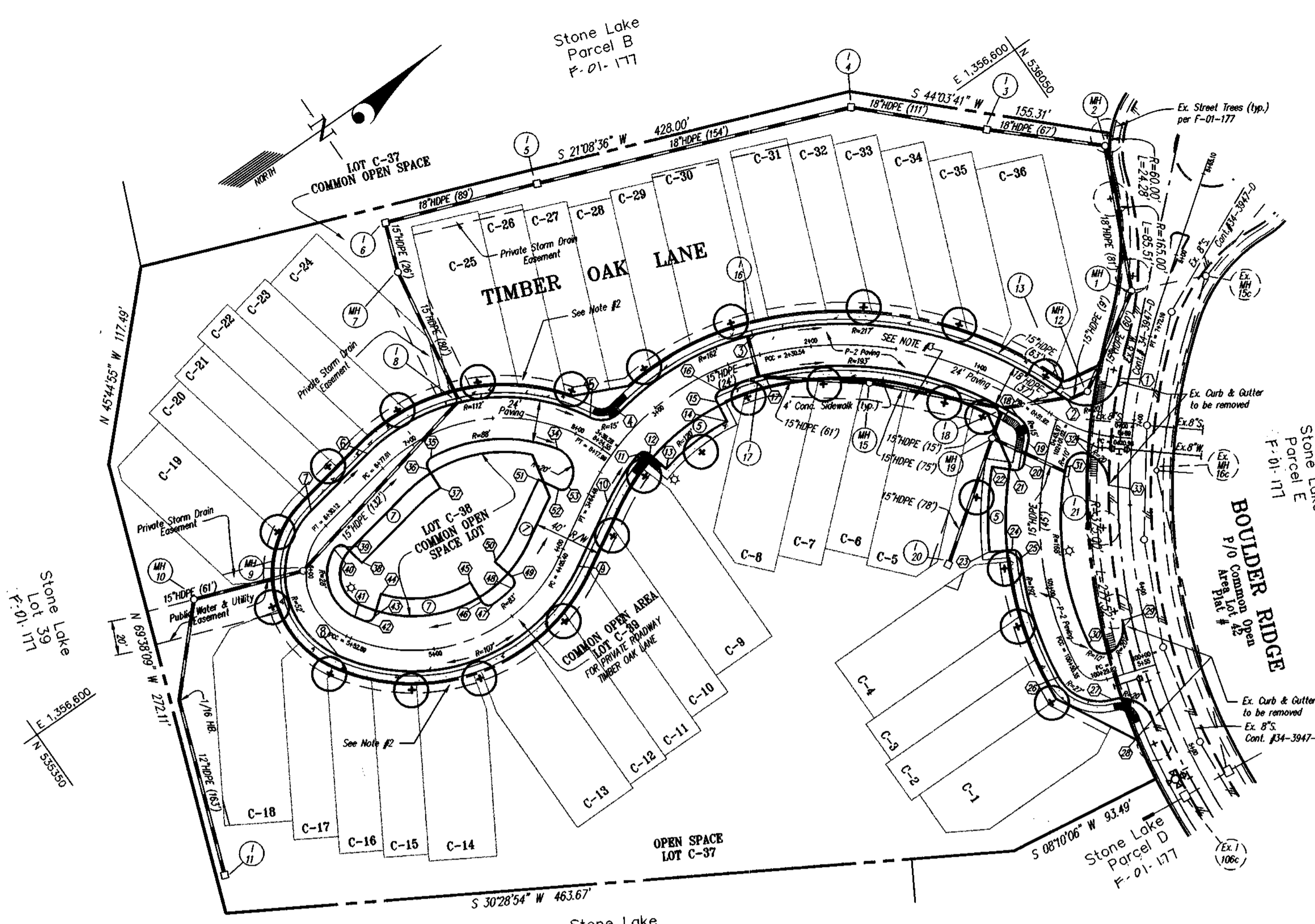
HOWARD COUNTY, MARYLAND

ELECTION DISTRICT No. 6

POINT #	STA/OFFSET	ELEV.	POINT #	STA/OFFSET	ELEV.
**1	FILLET 7+22.55, 12' LT.	314.74	41	PCC 5+52.89, 12' RT.	330.23
2	FILLET 0+45.97, 12' RT.	316.93	42	FILLET 5+46.14, 12' RT.	330.43
3	PCC 2+30.54, 12' RT.	323.98	43	FILLET 5+40.04, 17.16' RT.	330.75
4	FILLET 3+16.48, 12' RT.	327.39	44	FILLET 5+40.04, 30' RT.	331.14
5	FILLET 8+03.31, 12' LT.	327.72	45	FILLET 4+61.12, 30' RT.	332.03
6	PC 6+77.61, 12' LT.	327.00	46	FILLET 4+61.12, 17.16' RT.	331.64
7	PT 6+30.12, 12' LT.	327.79	47	FILLET 4+55.03, 12' RT.	331.46
8	PCC 5+52.89, 12' LT.	330.23	48	FILLET 4+38.30, 12' RT.	331.30
9	PC 4+05.40, 12' LT.	330.66	49	FILLET 4+32.20, 17.16' RT.	331.36
10	PT 3+64.48, 12' LT.	329.29	50	FILLET 4+32.20, 30' RT.	331.75
11	FILLET 3+28.13, 12' LT.	327.85	51	FILLET 3+69.74, 30' RT.	330.04
12	FILLET 3+22.49, 17.09' LT.	327.68	52	FILLET 3+69.74, 17.16' RT.	329.65
13	FILLET 3+22.49, 30' LT.	328.19	53	FILLET 3+65.64, 12' RT.	329.33
14	FILLET 2+66.24, 30' LT.	325.94			
15	FILLET 2+66.24, 17.09' LT.	325.55			
16	FILLET 2+60.60, 12' LT.	325.17			
17	PCC 2+30.54, 12' LT.	323.98			
18	FILLET 0+66.63, 12' RT.	317.62			
19	FILLET 1+82.65, 12' LT.	317.53			
20	FILLET 1+71.13, 12' LT.	317.95			
21	FILLET 10+66.56, 16.94' LT.	318.26			
**22	FILLET 10+66.56, 30' LT.	318.65			
**23	FILLET 10+24.37, 30' LT.	320.17			
24	FILLET 1+24.37, 16.94' LT.	319.78			
25	FILLET 1+19.80, 12' LT.	319.79			
26	PCC 0+50.35, 12' LT.	322.28			
**27	PC 0+29.82, 12' LT.	323.02			
28	FILLET 5+25.65, 12' LT.	324.57			
29	FILLET 5+84.36, 12' LT.	322.38			
30	FILLET 0+59.40, 12' RT.	321.24			
31	PC 1+74.11, 12' RT.	317.12			
32	PCC 0+22.50, 12.25' LT.	317.24			
33	PT 6+61.35, 12' RT.	318.30			
34	FILLET 7+93.07, 12' RT.	327.51			
35	FILLET 7+05.79, 12' RT.	326.81			
36	FILLET 6+99.99, 17.15' RT.	327.01			
37	FILLET 6+99.99, 30' RT.	327.40			
38	FILLET 6+30.12, 30' RT.	328.33			
39	FILLET 6+30.12, 17.55' RT.	327.94			
40	FILLET 6+21.35, 12' RT.	328.00			

** Indicates station along Boulder Ridge (F 01-177).

* Indicates elevation along vertical curve which has been adjusted to create a sump at 7+32.72 and insure positive drainage.



CURVE DATA											
STREET NAME	P.C. STA.	P.R.C. STA.	P.C.C. STA.	P.T. STA.	RADIUS	ARC	TANGENT	CHORD	BEARING	DELTA	
TIMBER OAK LANE	0+10.98	0+51.92			75.00'	40.94'	20.99'	40.43'	N 55°38'53" E	311°6'29"	
TIMBER OAK LANE		0+51.92	2+30.54		205.00'	178.62'	95.42'	173.02'	N 46°19'30" E	49°55'17"	
TIMBER OAK LANE			2+30.54	3+64.48	150.00'	133.95'	71.81'	129.54'	N 04°13'03" W	51°09'49"	
TIMBER OAK LANE	4+05.40		5+52.89		95.00'	147.49'	93.28'	133.12'	N 14°40'40" E	88°57'16"	
TIMBER OAK LANE			5+52.89	6+30.12	40.00'	77.23'	57.79'	65.78'	N 65°32'07" W	110°37'10"	
TIMBER OAK LANE	6+77.61		8+17.99		100.00'	140.39'	84.56'	129.14'	N 29°59'31" E	80°26'05"	
TIMBER OAK LANE	100+29.82		100+50.35		15.00'	20.52'	12.23'	18.96'	S 57°16'27" W	78°23'56"	
TIMBER OAK LANE			100+50.35	102+01.02	180.00'	150.67'	80.07'	146.31'	S 59°32'47" E	47°57'37"	

STREET TREE SCHEDULE			
SYMBOL	NAME (BOTANICAL/COMMON)	SIZE	REMARKS
Or	Quercus Rubra / Red Oak	2-3" Cal. 12-14" Ht.	26

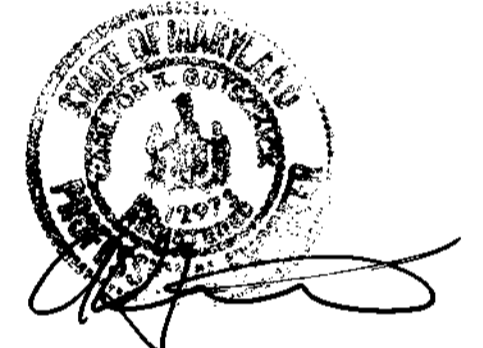
STREET LIGHT SCHEDULE			
LOCATION	LAMP TYPE	MOUNTING	POLE TYPE
C.L. STA. 101+20.34 - 17' R.	100-W HIGH PRESSURE SODIUM VAPOR	TRADITIONAL POST TOP	14" BLACK FIBERGLASS
C.L. STA. 3+25 - 38' L.	100-W HIGH PRESSURE SODIUM VAPOR	TRADITIONAL POST TOP	14" BLACK FIBERGLASS
C.L. STA. 5+77 - 24' L.	100-W HIGH PRESSURE SODIUM VAPOR	TRADITIONAL POST TOP	14" BLACK FIBERGLASS

- NOTE:
- LOT C-39 IS ALSO A SEWER, WATER AND UTILITY EASEMENT (PUBLIC).
 - 5' TREE MAINTENANCE & UTILITY EASEMENT (PRIVATE) AND A 5' WATER, SEWER & UTILITY EASEMENT (PUBLIC).
 - PRIVATE STORM DRAIN AND TREE MAINTENANCE EASEMENT AND A PUBLIC WATER, SEWER AND UTILITY EASEMENT.

APPROVED: HOWARD COUNTY DEPARTMENT OF PUBLIC WORKS
 Chief, Bureau of Highways *AGS* Date _____

APPROVED: HOWARD COUNTY DEPARTMENT OF PLANNING & ZONING
 Chief, Division of Land Development *AGS* Date *3/8/02*

Chief, Development Engineering Division *AGS* Date *3/10/02*



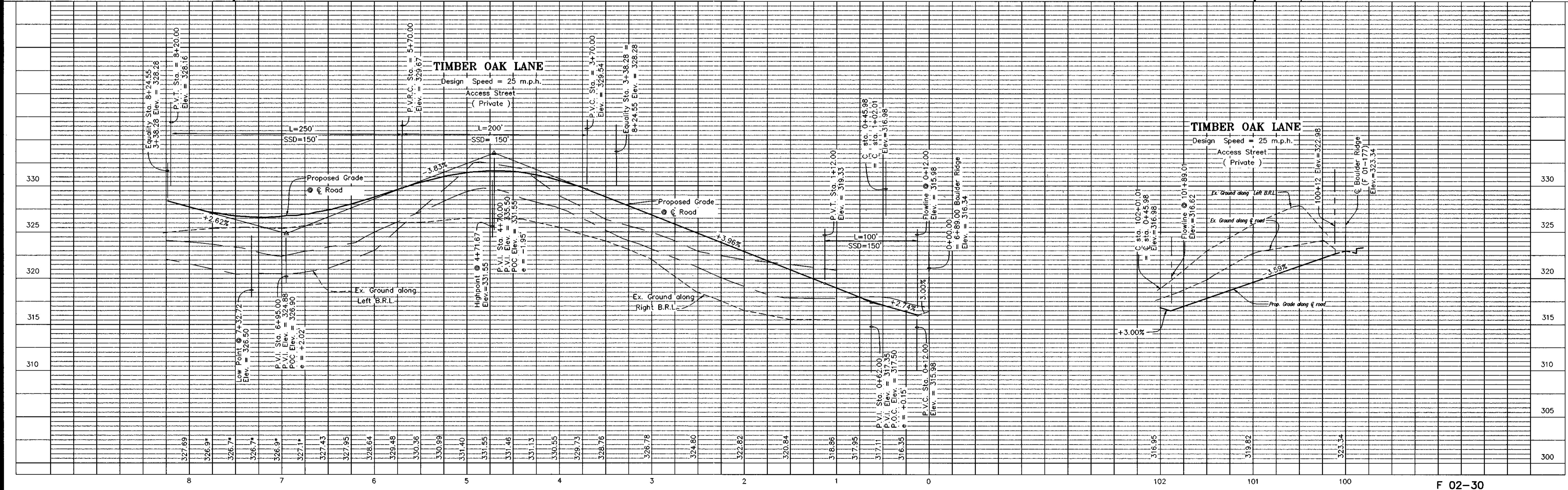
GLW GUTSCHICK LITTLE & WEBER, P.A.
 CIVIL ENGINEERS, LAND SURVEYORS, LAND PLANNERS, LANDSCAPE ARCHITECTS
 3909 NATIONAL DRIVE - SUITE 250 - BURTONSVILLE OFFICE PARK
 BURTONSVILLE, MARYLAND 20866
 TEL: 301-421-4024 BAL: 410-880-1820 DC/VA: 301-989-2524 FAX: 301-421-4186

ROAD CONSTRUCTION PLANS
STONE LAKE
PARCEL C
 TIMBER OAK LANE
 STATION 0+00 TO 8+24.55
 ELECTION DISTRICT NO. 6
 HOWARD COUNTY, MARYLAND

DESIGNED DEV
 DRAWN JAU
 CHECKED DEV
 DATE 1/24/02

SCALE 1"=50'
 DRAWING 2 of 7
 ZONING R-ED
 JOB No. 01075

OWNER
GOODER BUILDERS
 10705 CHARTER DRIVE
 SUITE 320
 COLUMBIA, MD 21044
 PH: 410-987-7600
 FAX: MR. STEVE APPLER



01075r-pc.dwg 1-24-02 11:13:18 am EST

ENGINEER'S CERTIFICATE

"I certify that this plan for erosion and sediment control represents a practical and workable plan based on my personal knowledge of the site conditions and that it was prepared in accordance with the requirements of the Howard Soil Conservation District."

CKJ 1/25/02
Date

DEVELOPER'S/BUILDER'S CERTIFICATE

"I/We certify that all development and/or construction will be done according to this plan, and that any responsible personnel involved in the construction project will have a Certificate of Attendance at a Maryland Department of the Environment Approved Training Program for the Control of Sediment and Erosion before beginning the project. I also authorize periodic on-site inspection by the HSCD."

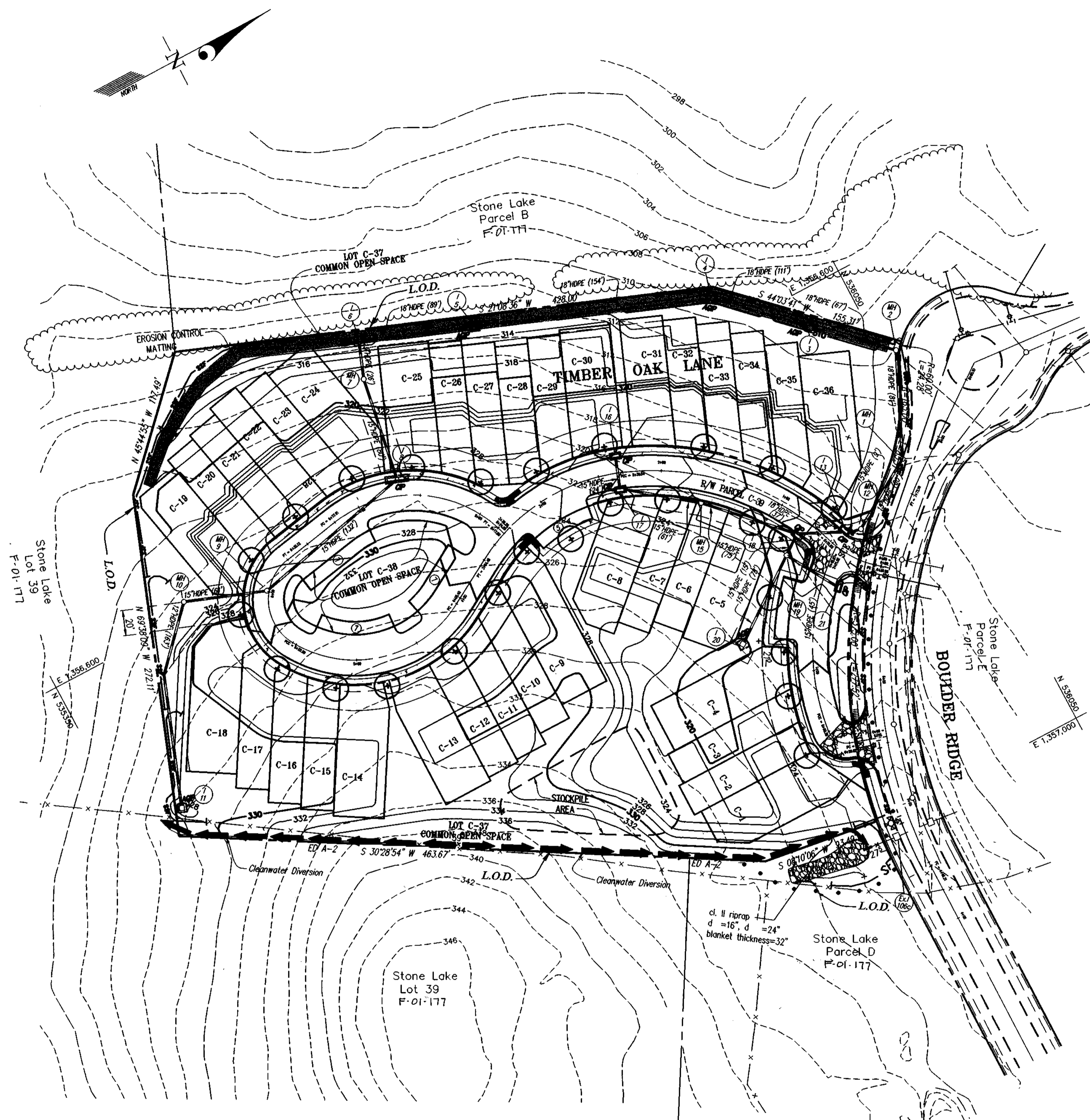
Signature of Developer/Builder _____ Date _____

These plans have been reviewed for the Howard Soil Conservation District and meet the technical requirements.

Jan Myers 2/6/02
Natural Resources Conservation Service Date

This Development Plan is approved for Soil Erosion and Sediment Control by the Howard Soil Conservation District.

John R. Robertson 2/6/02
Howard S.C.D. Date



LEGEND

- ● ● / L.O.D. LIMIT OF DISTURBANCE
- SSF — SUPER SILT FENCE
- CIP CURB INLET PROTECTION
- SCE STABILIZED CONSTRUCTION ENTRANCE

NOTE: Where L.O.D. is not shown as the property line is the L.O.D.



APPROVED: HOWARD COUNTY DEPARTMENT OF PUBLIC WORKS
Chief, Bureau of Highways *MS* Date _____

APPROVED: HOWARD COUNTY DEPARTMENT OF PLANNING & ZONING
Chief, Division of Land Development *MS* 3/8/02 Date
Chief, Development Engineering Division *MS* 2/7/02 Date

GLW GUTSCHICK LITTLE & WEBER, P.A.
CIVIL ENGINEERS, LAND SURVEYORS, LAND PLANNERS, LANDSCAPE ARCHITECTS
3909 NATIONAL DRIVE - SUITE 250 - BURTONTVILLE OFFICE PARK
BURTONTVILLE, MARYLAND 20886
TEL: 301-421-4024 BALT: 410-880-1820 DC/VA: 301-989-2524 FAX: 301-421-4186

DATE	REVISION	BY	APP'R.

PREPARED FOR:
GOODER BUILDERS
10705 CHARTER DRIVE
SUITE 300
COLUMBIA, MD 21044
PH: 410-997-7400
ATtn: MR. STEVE APPLER

MASS GRADING/SEDIMENT CONTROL PLAN
STONE LAKE - Lots C-1 through C-39
A Resubdivision of Parcel C
Plat # _____
ELECTION DISTRICT No. 6

SCALE	ZONING	G. L. W. FILE No.
1"=50'	R-ED	01075
DATE	TAX MAP - GRID	SHEET
1/24/02	47-9/10	3 OF 7

HOWARD COUNTY, MARYLAND

01075RP3.DWG 1-24-02 11:13:31 am EST

DRAINAGE AREA INFORMATION			
INLET	AREA	'C' VALUE	% IMP.
I-3	0.18	0.54	43%
I-4	0.22	0.54	43%
I-5	0.19	0.54	43%
I-6	0.34	0.54	43%
I-8	1.27	0.54	43%
I-11	0.34	0.54	43%
I-13	0.34	0.54	43%
I-16	0.16	0.54	43%
I-17	0.40	0.54	43%
I-18	0.20	0.54	43%
I-19	0.41	0.54	43%
I-20	1.57	0.34	17%



LEGEND

--- DRAINAGE DIVIDE LINE



APPROVED: HOWARD COUNTY DEPARTMENT OF PUBLIC WORKS
 Chief, Bureau of Highways *MS* Date
 APPROVED: HOWARD COUNTY DEPARTMENT OF PLANNING & ZONING
 Chief, Division of Land Development *MS* 3/8/02 Date
 Chief, Development Engineering Division *MS* 3/7/02 Date

GLW GUTSCHICK LITTLE & WEBER, P.A.
 CIVIL ENGINEERS, LAND SURVEYORS, LAND PLANNERS, LANDSCAPE ARCHITECTS
 3909 NATIONAL DRIVE - SUITE 250 - BURTONSVILLE OFFICE PARK
 BURTONSVILLE, MARYLAND 20886
 TEL: 301-421-4024 BAL: 410-880-1820 DC/WA: 301-989-2524 FAX: 301-421-4186

DATE	REVISION	BY	APP'R.

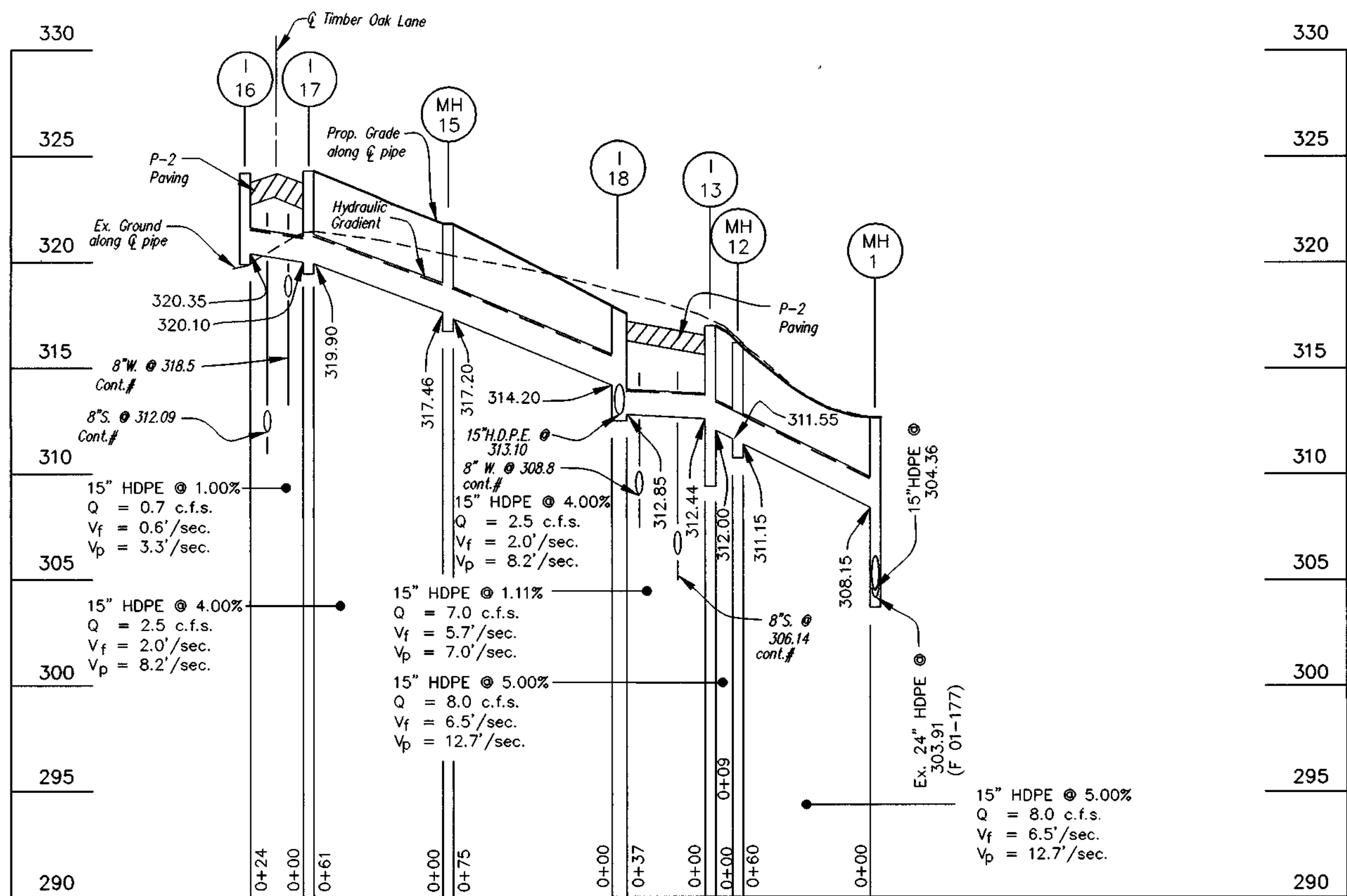
PREPARED FOR:
GOODER BUILDERS
 10705 CHARTER DRIVE
 SUITE 300
 COLUMBIA, MD 21044
 PH: 410-997-7400
 ATTN: MR. STEVE APPLER

DRAINAGE AREA MAP
STONE LAKE - Lots C-1 through C-39
 A Resubdivision of Parcel C
 Plat #
 ELECTION DISTRICT No. 6

SCALE	ZONING	G. L. W. FILE No.
1"=50'	R-ED	01075
DATE	TAX MAP - GRID	SHEET
1/24/02	47-9/10	4 OF 7

HOWARD COUNTY, MARYLAND

01075rp4.dwg 1-24-02 11:13:44 am EST



STORM DRAIN PROFILE

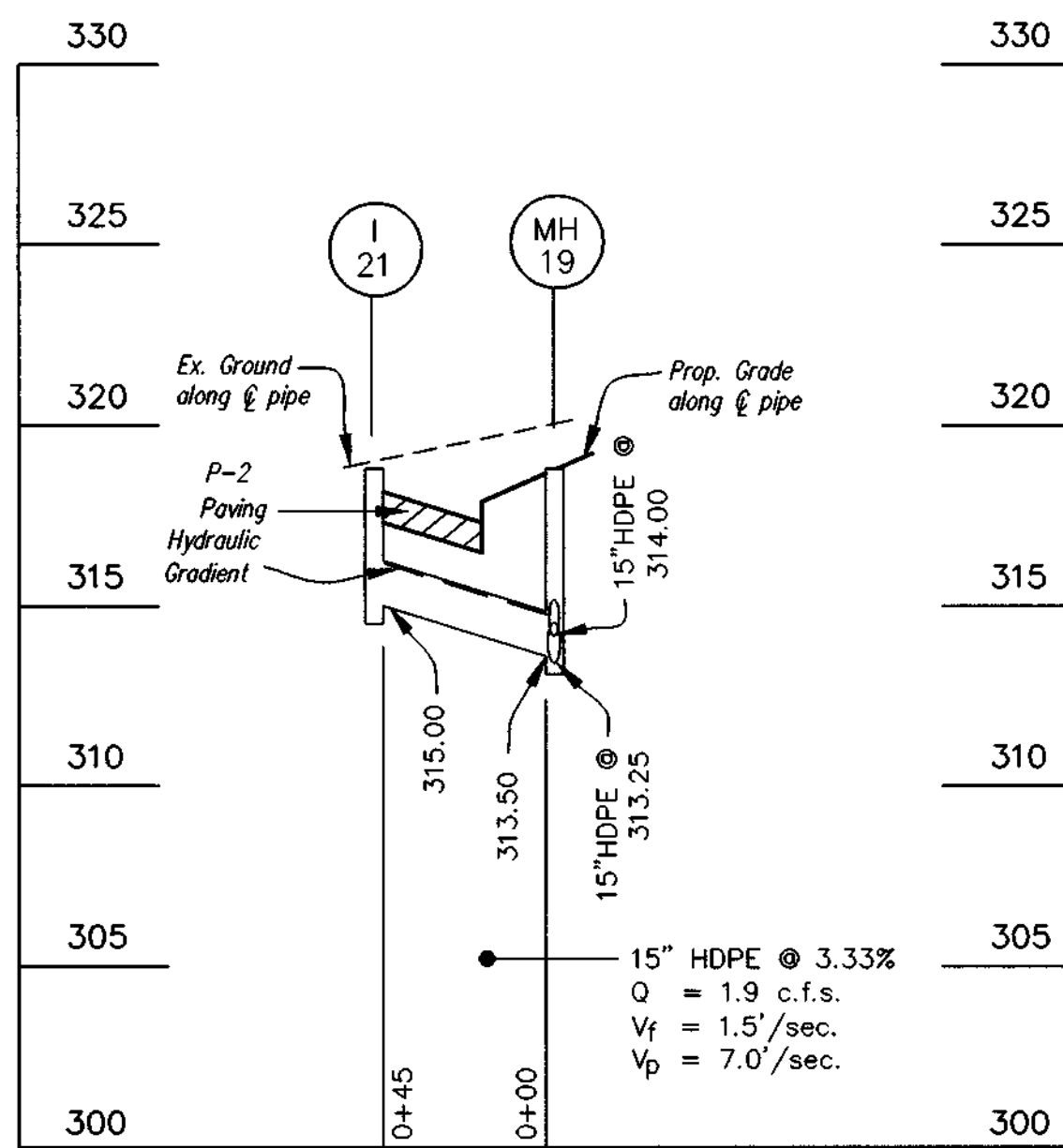
Scale: 1" = 50' Horiz.
1" = 5' Vert.

NO	TYPE	WIDTH (INSIDE)	TOP ELEVATION		INVERT ELEVATION		STD. DETAIL	LOCATIONS	REMARKS
			UPPER	LOWER	UPPER	LOWER			
I-3	DRAIN BASIN	2'-0"	309.00	—	305.67	305.57	**	N 536,009.7 E 1,356,629.0	
I-4	DRAIN BASIN	2'-0"	309.70	—	306.60	306.50	**	N 535,952.0 E 1,356,572.5	
I-5	DRAIN BASIN	2'-0"	311.00	—	308.08	307.98	**	N 535,775.4 E 1,356,503.6	
I-6	DRAIN BASIN	2'-0"	311.70	—	308.95	308.70	**	N 535,689.5 E 1,356,471.2	
I-8	A-10 INLET	2'-6"	326.46	—	313.77	313.50	HO. CO. S.D. 4.02	7+32.72 TIMBER OAK LN. 12' LT.	
I-11	DRAIN BASIN	2'-0"	327.80	—	—	324.75	**	N 535,392.9 E 1,356,730.6	
I-13	A-10 INLET	2'-6"	317.21	316.93	312.44	312.00	HO. CO. S.D. 4.02	0+49.39 TIMBER OAK LN. 12' RT.	
I-16	A-10 INLET	2'-6"	324.35	323.96	—	320.35	HO. CO. S.D. 4.02	2+34.57 TIMBER OAK LN. 12' RT.	
I-17	A-10 INLET	2'-6"	324.35	323.96	320.10	319.90	HO. CO. S.D. 4.02	2+34.57 TIMBER OAK LN. 12' LT.	
I-18	A-10 INLET	2'-6"	317.90	317.56	314.20	312.85	HO. CO. S.D. 4.02	0+69.81 TIMBER OAK LN. 12' LT.	
I-20	E' TYPE INLET	4'-1/2"	319.50	—	—	316.25	HO. CO. S.D. 4.21	N 535,845.1 E 1,356,824.7	
I-21	A-10 INLET	2'-6"	317.92	317.56	—	315.00	HO. CO. S.D. 4.02	101+81.90 TIMBER OAK LN. 12' RT.	
MH 1	STD. MANHOLE	5'-0"	312.50	—	308.15	303.91	HO. CO. G 5.01	N 536,025.2 E 1,356,754.9	
MH 2	STD. MANHOLE	4'-0"	310.80	—	305.07	304.97	HO. CO. G 5.01	N 536,061.1 E 1,356,676.5	
MH 7	STD. MANHOLE	4'-0"	318.50	—	312.70	310.25	HO. CO. G 5.01	N 535,678.9 E 1,356,499.1	
MH 9	STD. MANHOLE	4'-0"	328.70	—	316.64	315.09	HO. CO. G 5.01	6+00.72 TIMBER OAK LN. 1.7' LT.	
MH 10	STD. MANHOLE	4'-0"	321.50	—	317.50	317.25	HO. CO. G 5.01	N 535,449.1 E 1,356,579.6	
MH 12	STD. MANHOLE	4'-0"	316.00	—	311.55	311.15	HO. CO. G 5.01	0+36.45 TIMBER OAK LN. 22' RT.	
MH 15	STD. MANHOLE	4'-0"	321.80	—	317.46	317.20	HO. CO. G 5.01	1+63.82 TIMBER OAK LN. 22' LT.	
MH 19	STD. MANHOLE	4'-0"	318.50	—	314.00	313.25	HO. CO. G 5.01	N 535,908.7 E 1,356,779.0	

Location is to center of manhole or yard drain and to center of structure at the face of curb for inlets
** Indicates drain basins by ADS or approved equal.

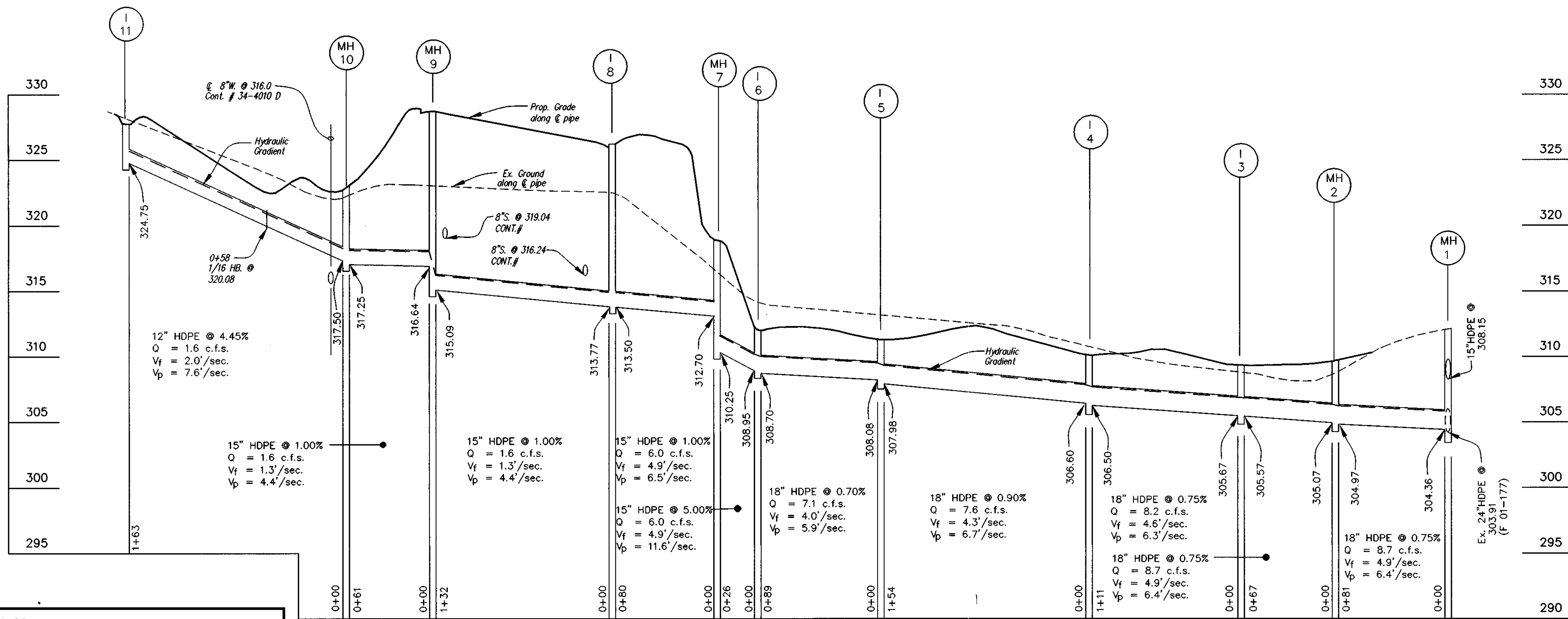
PIPE SCHEDULE			
SIZE	TYPE	QUANTITY (L.F.)	REMARKS
12"	HDPE	16.3'	
15"	HDPE	70.3'	
18"	HDPE	50.2'	

HDPE indicates High Density Polyethylene, N-12 by ADS, Hi-0 by Hanover or an approved equal.



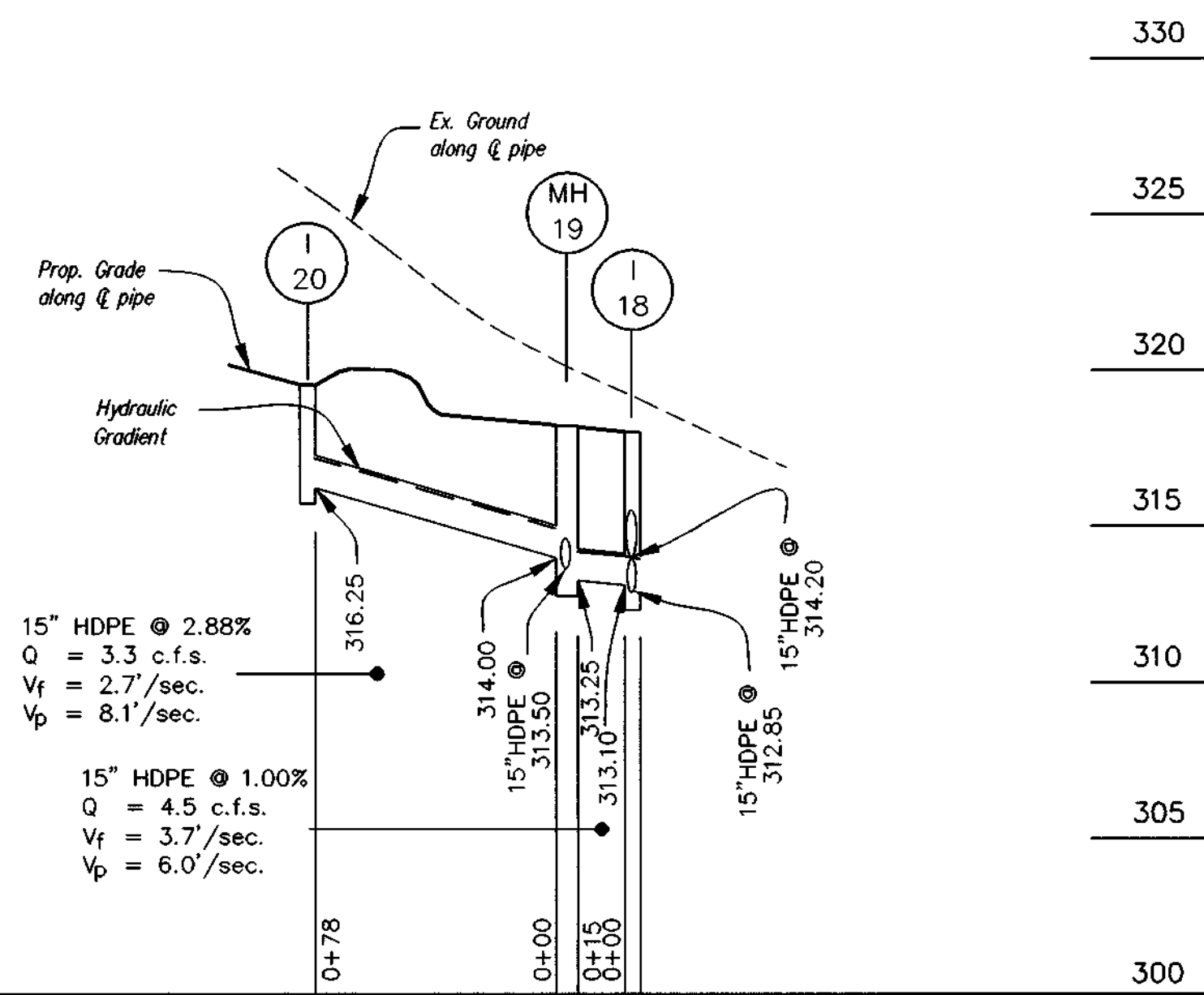
STORM DRAIN PROFILE

Scale: 1" = 50' Horiz.
1" = 5' Vert.

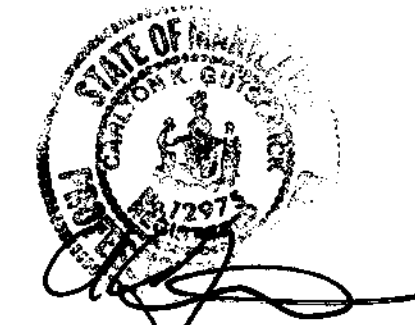


STORM DRAIN PROFILE

Scale: 1" = 50' Horiz.
1" = 5' Vert.



APPROVED: HOWARD COUNTY DEPARTMENT OF PUBLIC WORKS
Chief, Bureau of Highways
Date
APPROVED: HOWARD COUNTY DEPARTMENT OF PLANNING & ZONING
Chief, Division of Lead Development
Date
Chief, Development Engineering Division
Date



GLW GUTSCHICK LITTLE & WEBER, P.A.
CIVIL ENGINEERS, LAND SURVEYORS, LAND PLANNERS, LANDSCAPE ARCHITECTS
3809 NATIONAL DRIVE - SUITE 250 - BURTNSVILLE OFFICE PARK
BURTNSVILLE, MARYLAND 20866
TEL: 301-421-4024 BALT: 410-880-1820 DC/VA: 301-989-2524 FAX: 301-421-4186

PREPARED FOR:
GOODIER BUILDERS
10705 CHARTER DRIVE
SUITE 320
COLUMBIA, MD 21044
PH: 410-997-2400
ATTN: MR. STEVE APPLER

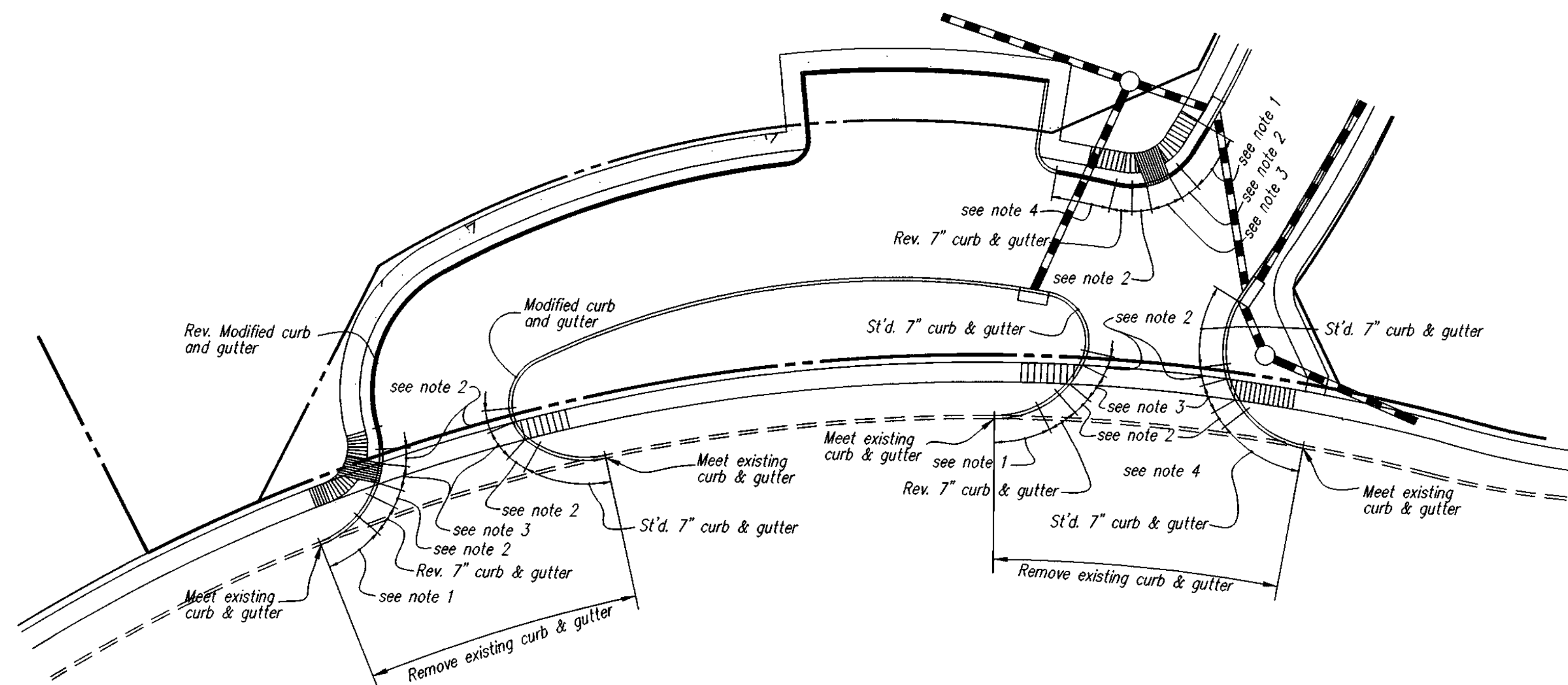
STORM DRAIN PROFILES
STONE LAKE - Lots C-1 through C-39
A Resubdivision of Parcel C
ELECTION DISTRICT No. 6

SCALE	ZONING	G. L. W. FILE NO.
AS SHOWN	R-ED	01075
DATE	TAX MAP - GRID	SHEET
1/24/02	47-9/10	5 OF 7

HOWARD COUNTY, MARYLAND

01075rp5.dwg 1-24-02 11:12:41 am EST

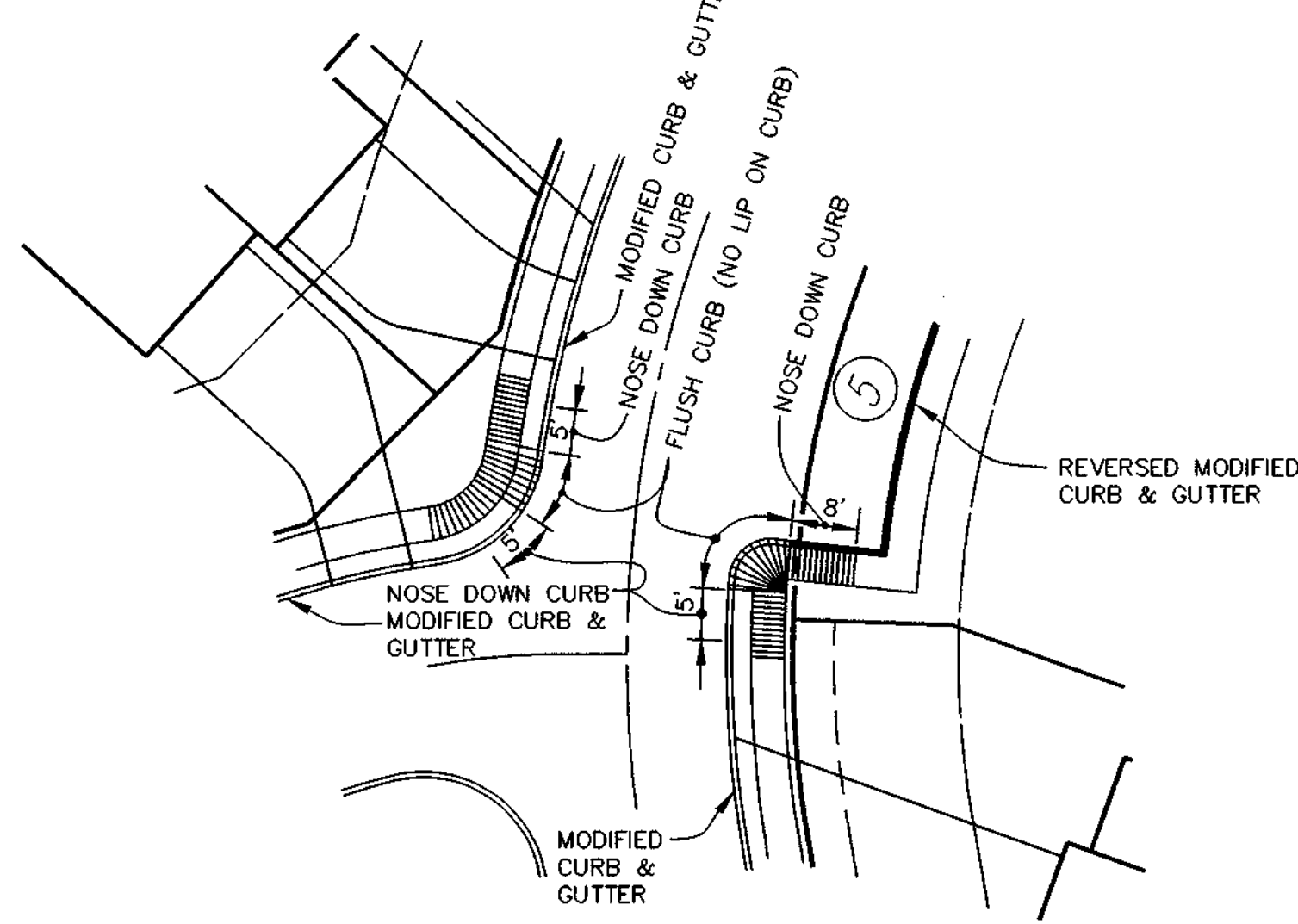
01075rp6.dwg 11-19-01 2:04:12 pm EST



- Notes:
1. Transition from standard 7" curb and gutter to reversed 7" curb and gutter.
 2. Nose down curb.
 3. Flush curb - no lip on curb.
 4. Transition from reversed 7" curb and gutter to reversed modified curb and gutter.

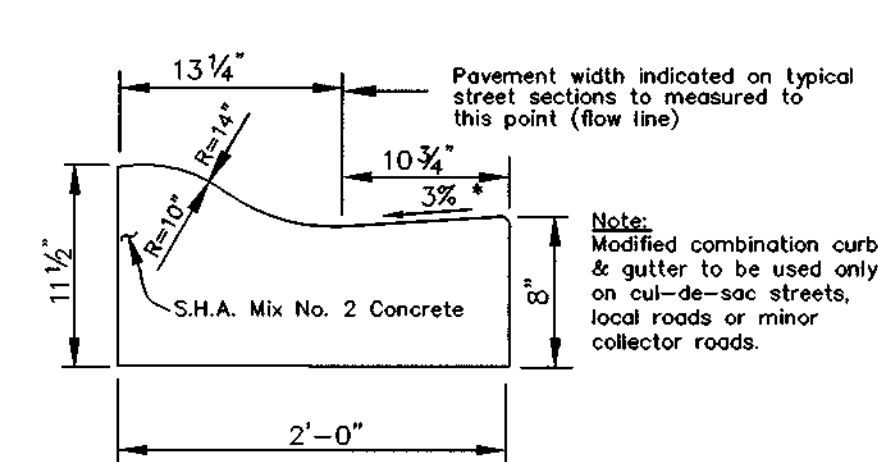
Entrance Detail

Scale: 1"=20'



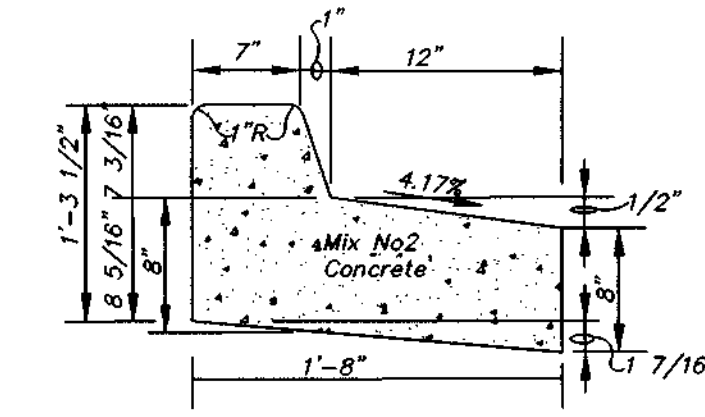
Sidewalk Detail

Scale: 1"=20'



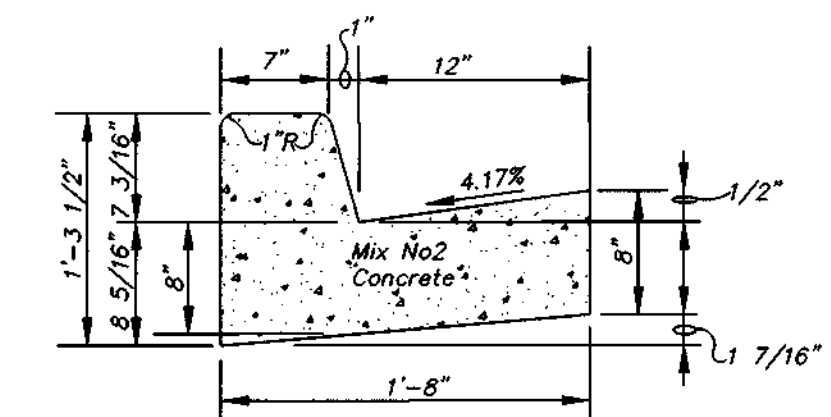
Modified Combination Curb & Gutter

* Gutter pan at the median edge of intermediate arterials or the high side of super-elevated sections shall be sloped at the same rate and in the same direction as the pavement. Match pavement cross slope when curb is located on the low side of super-elevated section and the rate of super-elevation is greater than 3% for modified curb and gutter.



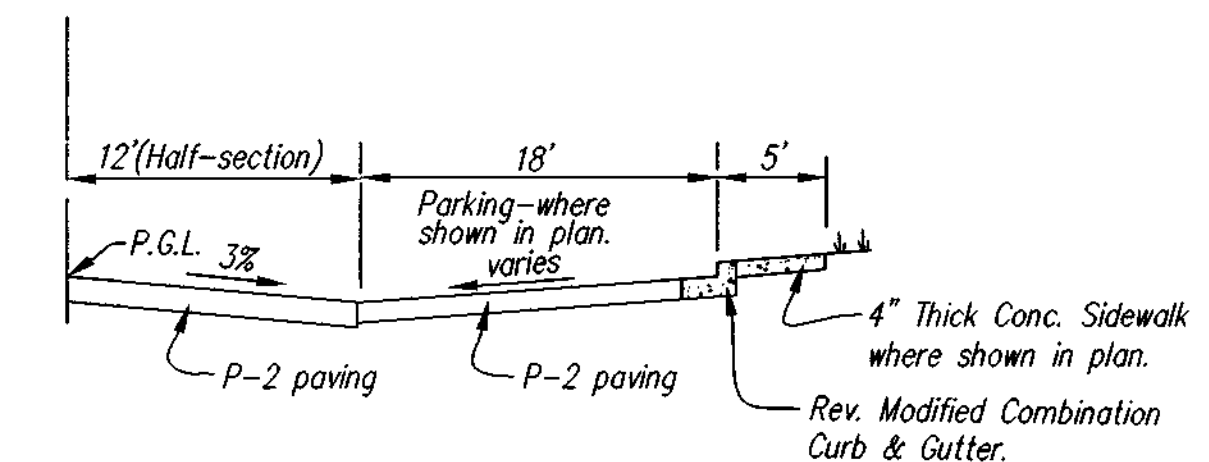
Spill/Reverse 7" Combination Curb & Gutter

N.T.S.



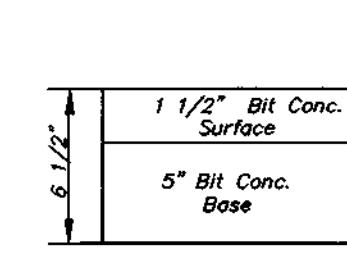
Standard 7" Combination Curb & Gutter

N.T.S.



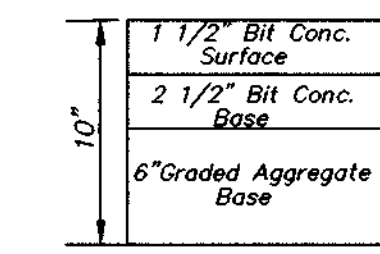
Typical Half Section Parking Adjacent to Roadway

No Scale



P-2 Full Depth Bituminous Concrete

N.T.S.



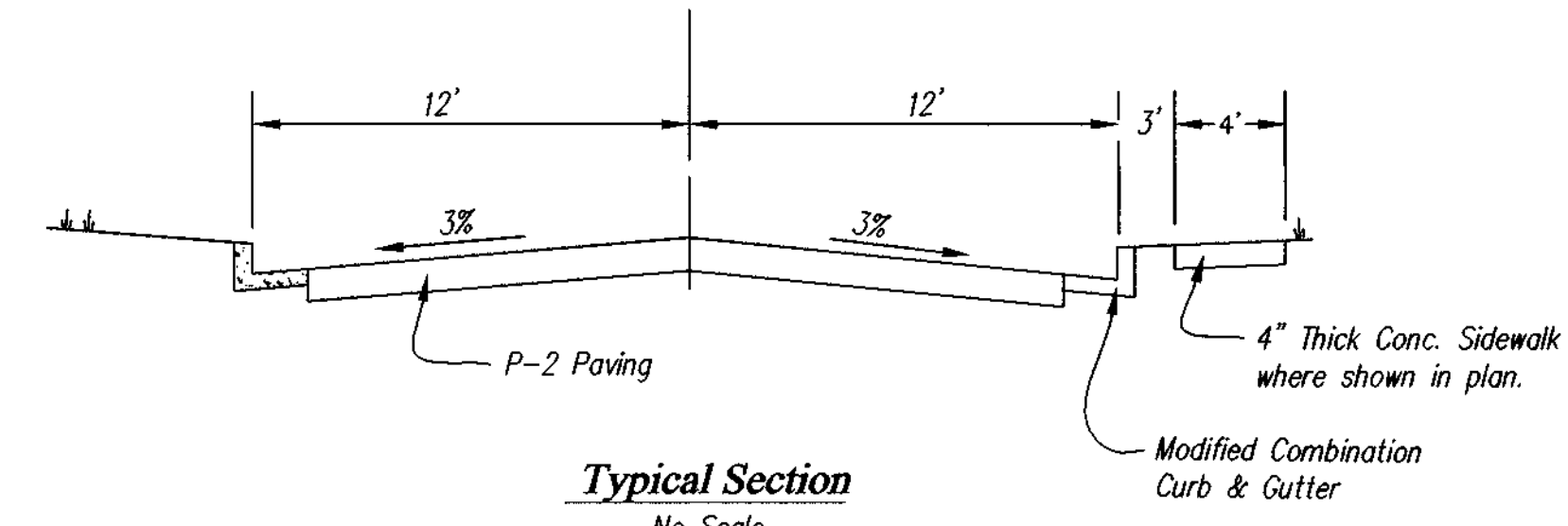
P-2 Granular Base (Alternate)

N.T.S.

Paving Sections

N.T.S.

Note: Other equivalent paving sections may be approved where approved by a professional soils engineer.

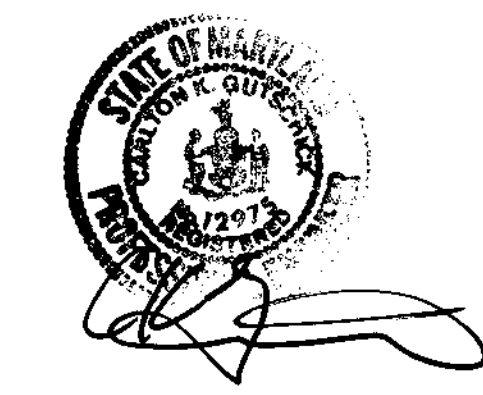


Typical Section

No Scale

Note: Where flow is away from curbline, reversed 6" combination curb & gutter shall be used.

APPROVED: HOWARD COUNTY DEPARTMENT OF PUBLIC WORKS
 Chief, Bureau of Highways _____ Date _____
 APPROVED: HOWARD COUNTY DEPARTMENT OF PLANNING & ZONING
 Chief, Division of Land Development _____ Date 3/8/02
 Chief, Development Engineering Division _____ Date 6/7/02



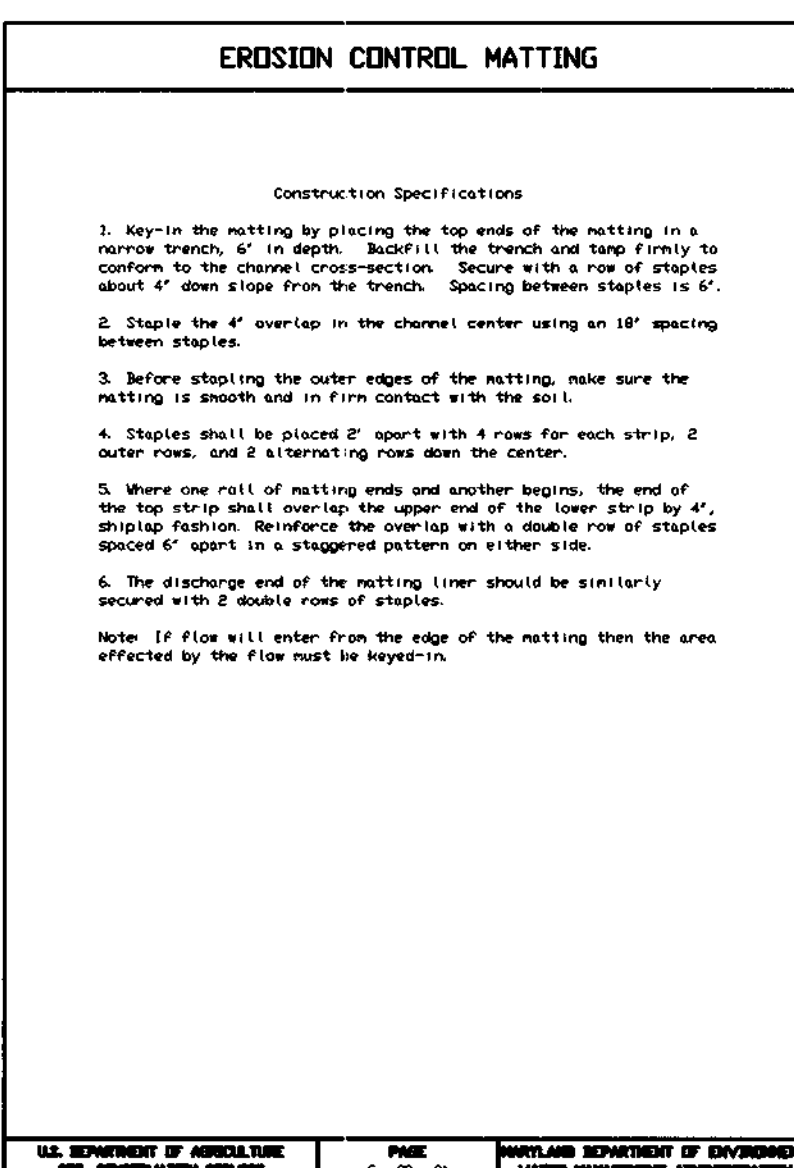
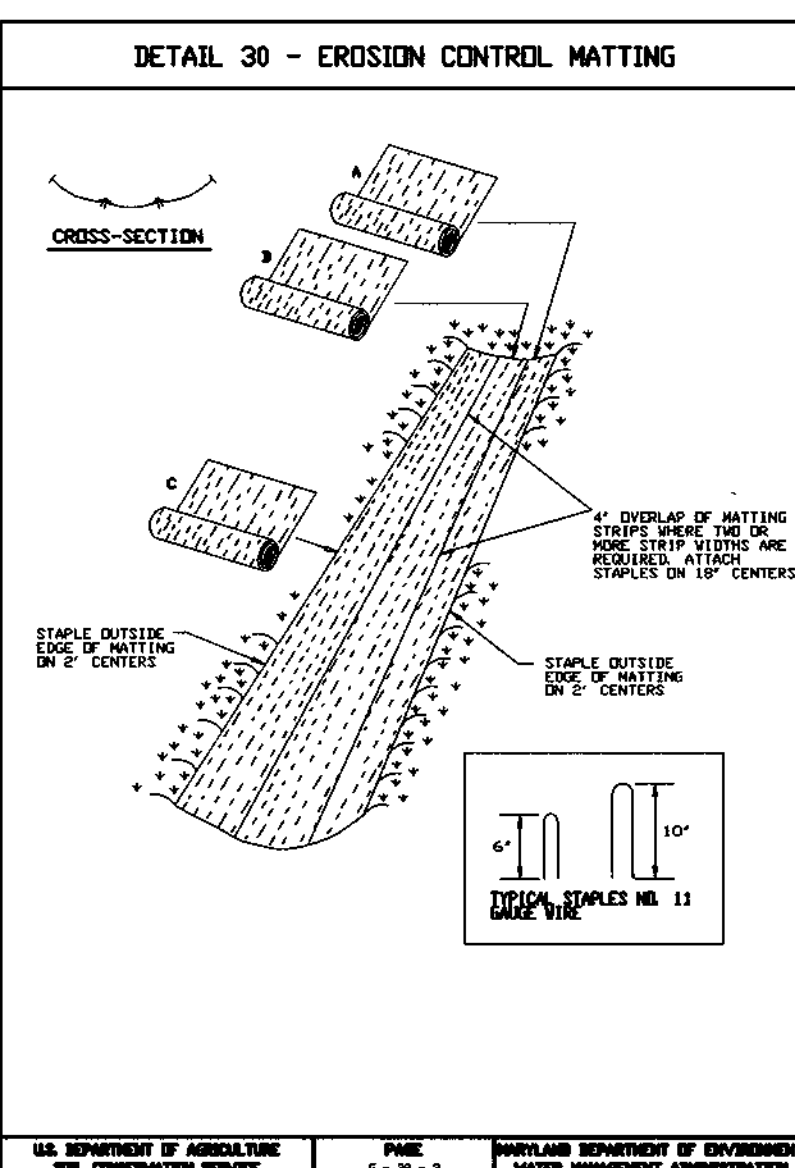
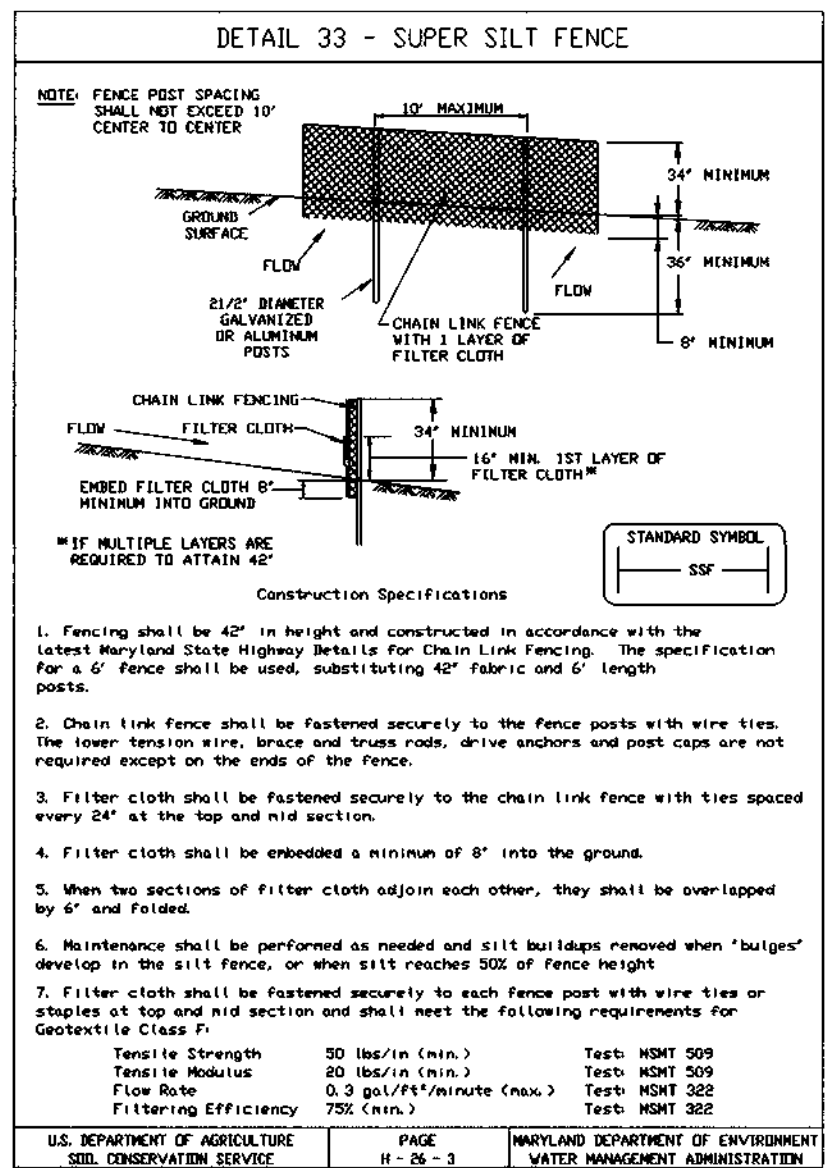
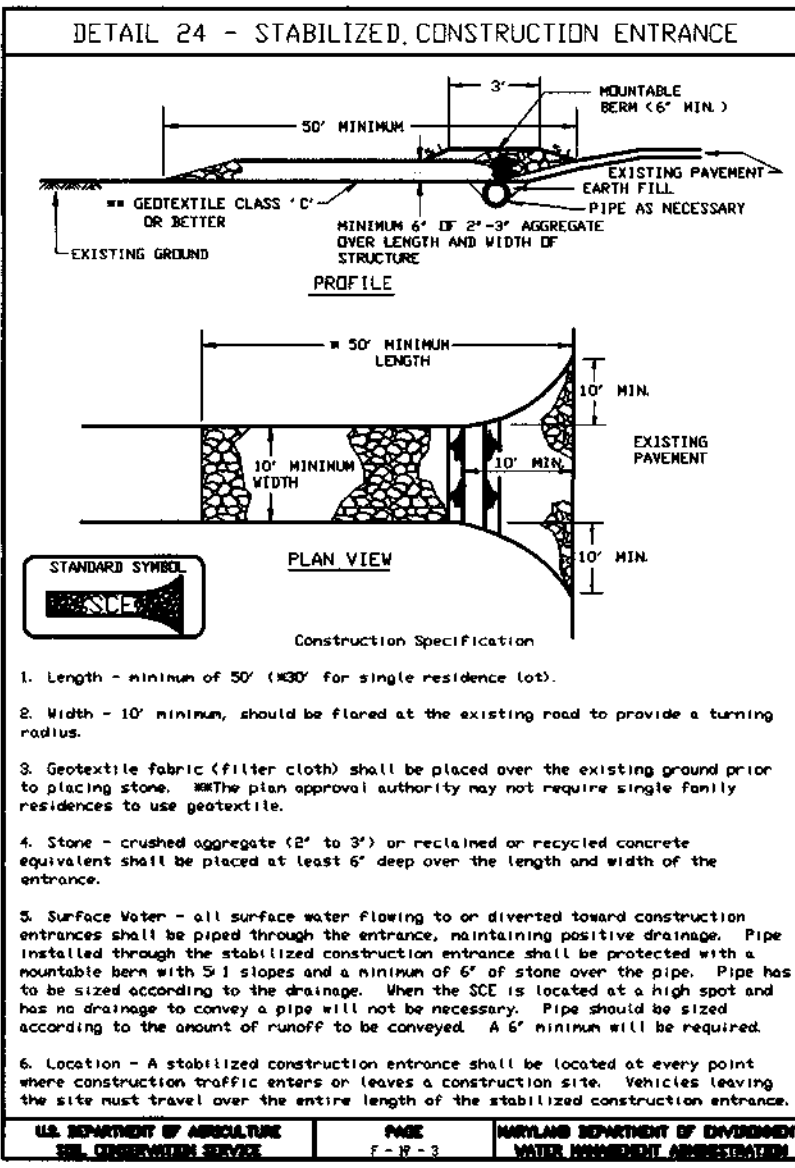
GLW GUTSCHICK LITTLE & WEBER, P.A.
 CIVIL ENGINEERS, LAND SURVEYORS, LAND PLANNERS, LANDSCAPE ARCHITECTS
 3909 NATIONAL DRIVE - SUITE 250 - BURTONSVILLE OFFICE PARK
 BURTONSVILLE, MARYLAND 20866
 TEL: 301-421-4024 BAL: 410-880-1820 DC/VA: 301-989-2524 FAX: 301-421-4186

DATE	REVISION	BY	APP'R.

PREPARED FOR:
GOODER BUILDERS
 1075 CHARTER DRIVE
 SUITE 320
 COLUMBIA, MD 21044
 PH: 410-997-7400
 ATTN: MR. STEVE APPLER

DETAIL SHEET
STONE LAKE - Lots C-1 through C-39
 A Resubdivision of Parcel C
 ELECTION DISTRICT No. 6
 HOWARD COUNTY, MARYLAND

SCALE	ZONING	G. L. W. FILE No.
NO SCALE	R-ED	01075
DATE	TAX MAP - GRID	SHEET
Nov., 2001	47-9/10	6 OF 7



STANDARD AND SPECIFICATIONS FOR TOPSOIL DEFINITION

PURPOSE
Placement of topsoil over a prepared subsoil prior to establishment of permanent vegetation.

CONDITIONS WHERE PRACTICE APPLIES

- This practice is limited to areas having 2:1 or flatter slopes where:
 - The texture of the exposed subsoil/parent material is not adequate to produce vegetative growth.
 - The soil material is so shallow that the rooting zone is not deep enough to support plants or furnish continuing supplies of moisture and plant nutrients.
 - The original soil to be vegetated contains material toxic to plant growth.
 - The soil is so acidic that treatment with limestone is not feasible.
- For the purpose of these Standards and Specifications, areas having slopes steeper than 2:1 require special consideration and design for adequate stabilization. Areas having slopes steeper than 2:1 shall have the appropriate stabilization shown on the plans.

SEDIMENT CONTROL NOTES

- A minimum of 24 hours notice must be given to the Howard County Office of Inspection and Permits prior to the start of any construction. (410) 131-1880
- All vegetative and structural practices are to be installed according to the provisions of this plan and are to be in conformance with the 1994 MARYLAND STANDARDS AND SPECIFICATIONS FOR SOIL EROSION AND SEDIMENT CONTROL.
- Following initial soil disturbance or redistribution, permanent or temporary stabilization shall be completed within:
 - 7 calendar days for all perimeter sediment control structures, dikes and perimeter slopes and all slopes greater than 3:1,
 - 14 days as to all other disturbed or graded areas on the project site.
- All sediment traps/basins shown must be fenced and warning signs posted around their perimeter in accordance with Vol. 1, Chapter 12, of the HOWARD COUNTY DESIGN MANUAL, Storm Drainage.
- All disturbed areas must be stabilized within the time period specified above in accordance with the 1983 MARYLAND STANDARDS AND SPECIFICATIONS FOR SOIL EROSION AND SEDIMENT CONTROL for permanent seedings (Sec. 51), sod (Sec. 54), temporary seedings (Sec. 50) and mulching (Sec. 52). Temporary stabilization, with mulch alone, can only be done when recommended seeding dates do not allow for proper germination and establishment of grasses.
- All sediment control structures are to remain in place and are to be maintained in operative condition until permission for their removal has been obtained from the Howard County Sediment Control Inspector.
- Site Analysis:

Total Area of Site	: 5.36 Acres
Area Disturbed	: 5.5 Acres
Area to be roofed or paved	: 0.7 Acres
Area to be vegetatively stabilized	: 4.8 Acres
Total Cut	: 11790 Cu. Yds.
Total Fill	: 11790 Cu. Yds.

 Off-site waste/borrow area location:

PERMANENT SEEDING NOTES

Apply to graded or cleared area not subject to immediate further disturbance where a permanent long-lived vegetative cover is needed.

Seedbed Preparation: Loosen upper three inches of soil by raking, discing or other acceptable means before seeding (unless previously loosened).

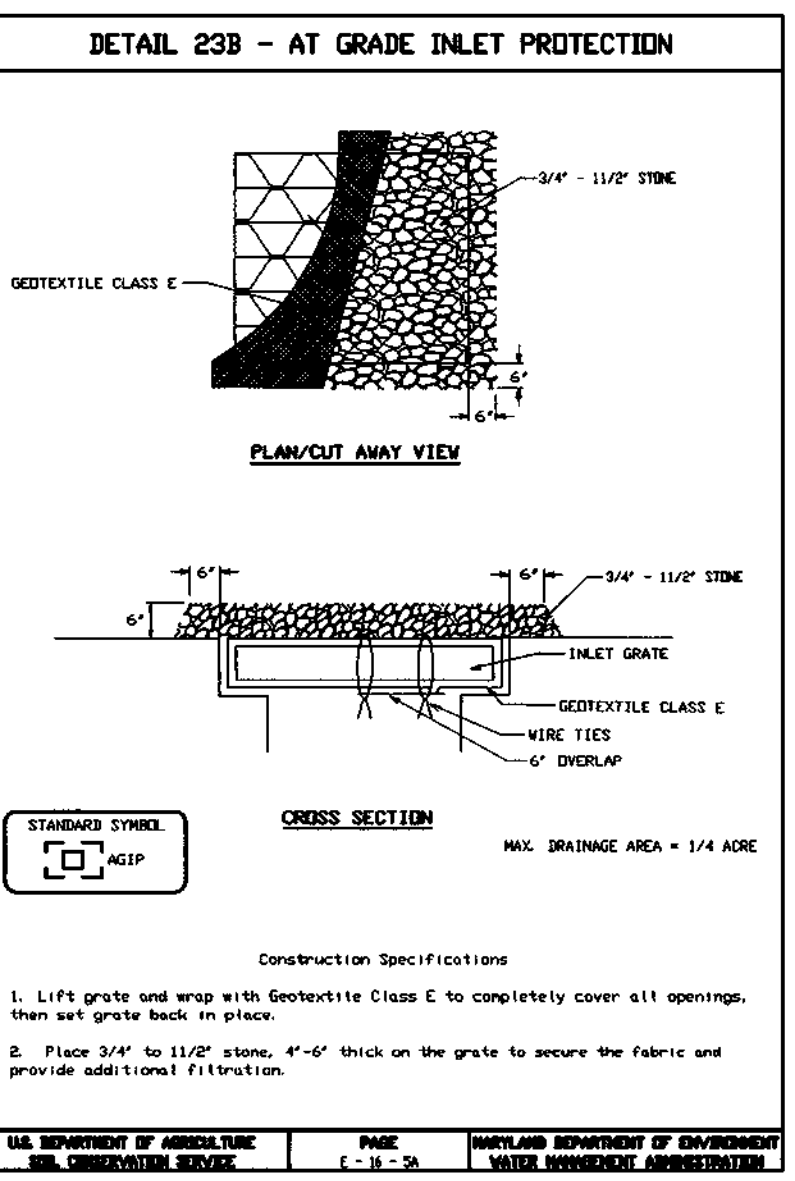
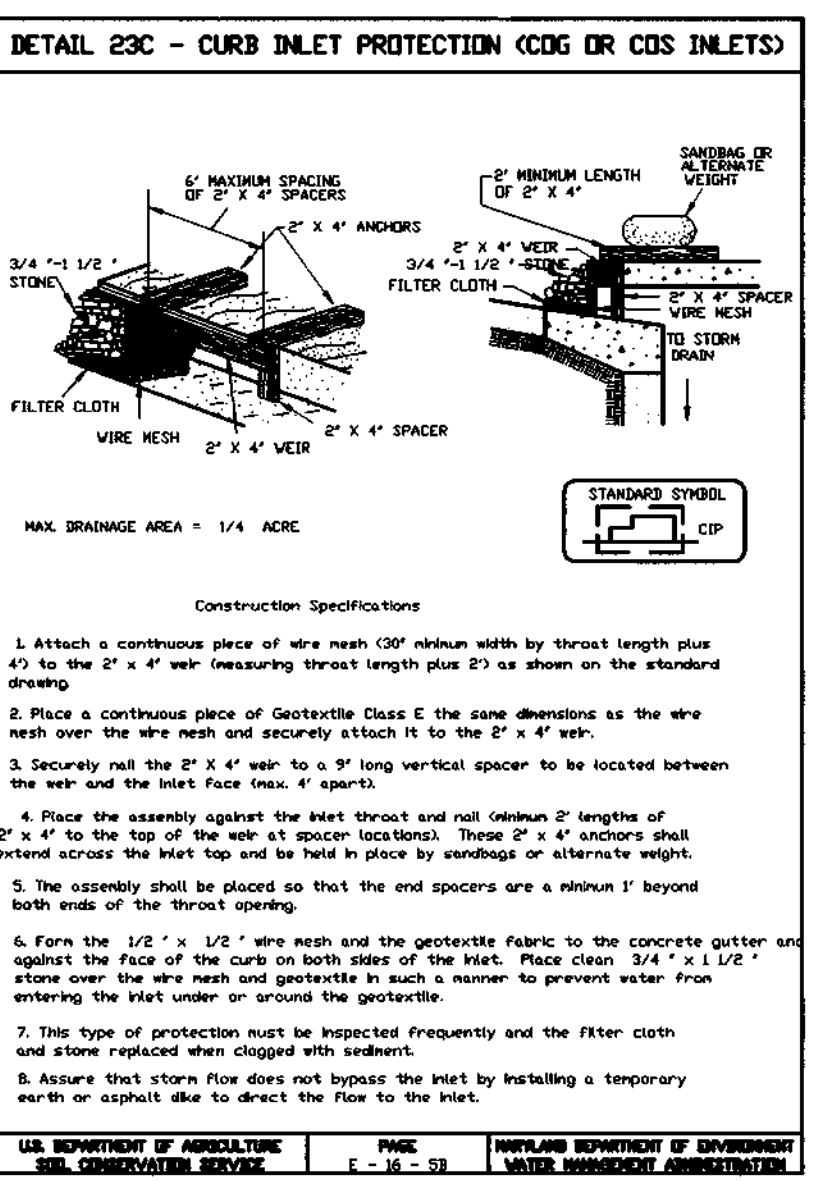
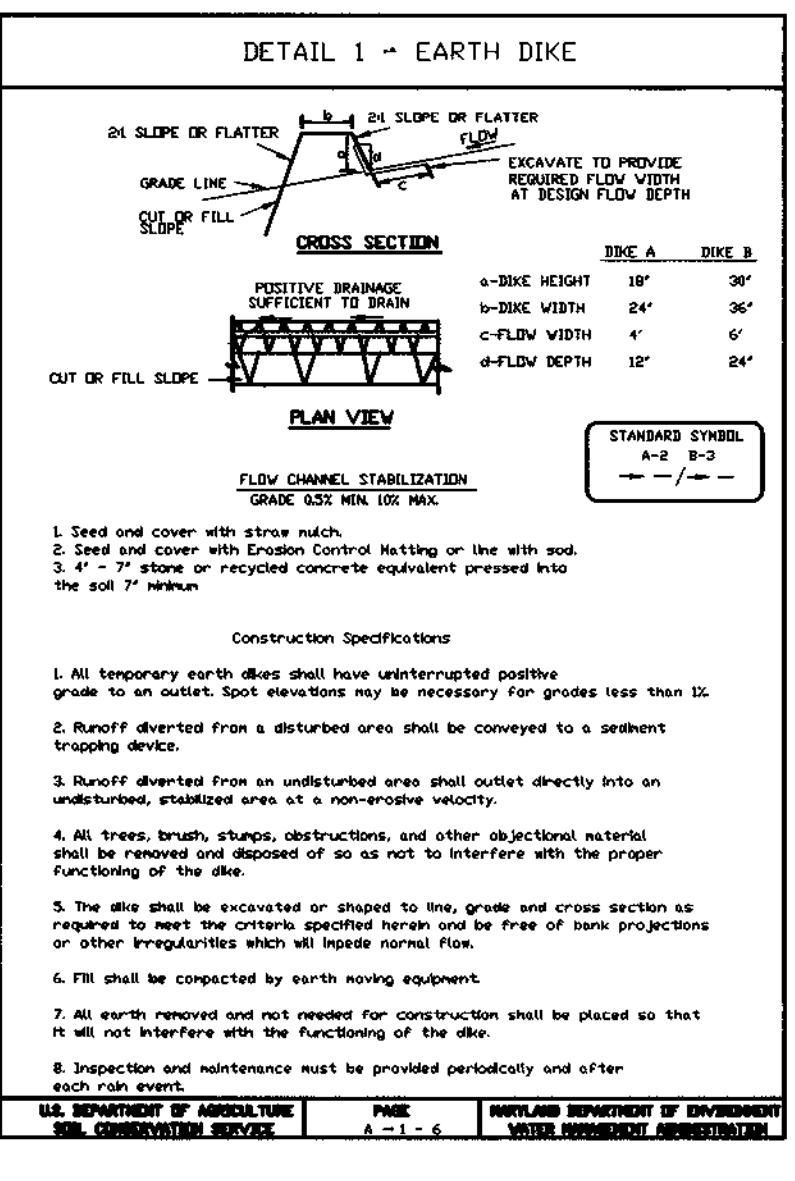
Soil Amendments: In lieu of soil test recommendations, use one of the following schedules

- Preferred - Apply 2 tons per acre dolomitic limestone (92 lbs/1000 square feet) and 600 lbs per acre 10-10-10 fertilizer (14 lbs/1000 sq ft) before seeding. Harrow or disc into upper three inches of soil. At time of seeding, apply 400 lbs per acre 30-0-0 ureaform fertilizer (9 lbs/1000 sq ft).
- Acceptable - Apply 2 tons per acre dolomitic limestone (92 lbs/1000 square feet) and 1000 lbs per acre 10-10-10 fertilizer (23 lbs/1000 sq ft) before seeding. Harrow or disc into upper three inches of soil.

Seeding: For the periods March 1 thru April 30, and August 1 thru October 15, seed with 60 lbs per acre (1.4 lbs/1000 sq ft) of Kentucky 31 Tall Fescue. For the period May 1 thru July 31, seed with 60 lbs Kentucky 31 Tall Fescue per acre and 2 lbs per acre (.05 lbs/1000 sq ft) of weeping lovegrass. During the period of October 16 thru February 23, protect site by Option (1) 2 tons per acre of well anchored straw mulch and seed as soon as possible in the spring. Option (2) Use sod. Option (3) Seed with 60 lbs/acre Kentucky 31 Tall Fescue and mulch with 2 tons/acre well anchored straw.

Mulching: Apply 1-1/2 to 2 tons per acre (70 to 90 lbs/1000 sq ft) of unrotted small grain straw immediately after seeding. Anchor mulch immediately after application using mulch anchoring tool or 218 gallons per acre (5 gal/1000 sq ft) of emulsified asphalt on flat areas. On slopes 8 feet or higher, use 348 gallons per acre (8 gal/1000 sq ft) for anchoring.

Maintenance: Inspect all seeded areas and make needed repairs, replacements and reseedings.



CONSTRUCTION AND MATERIAL SPECIFICATIONS

- Topsoil salvaged from the existing site may be used provided that it meets the standards as set forth in these specifications. Typically, the depth of topsoil to be salvaged for a given soil type can be found in the respective soil profile section in the Soil Survey published by USDA-SCS in cooperation with Maryland Agricultural Experimental Station.
 - Topsoil shall be a loam, sandy loam, clay loam, silt loam, sandy clay loam, loamy sand. Other soils may be used if recommended by an agronomist or soil scientist and approved by the appropriate approval authority. Regardless, topsoil shall not be a mixture of contrasting textured subsoils and shall contain less than 5% by volume of cinders, stones, slag, coarse fragments, gravel, sticks, roots, trash, or other materials larger than 1 1/2" in diameter.
 - Topsoil must be free of plant parts such as bermuda grass, quackgrass, Johnsongrass, nutsedge, poison ivy, thistle, or others as specified.
 - Where the subsoil is either highly acidic or composed of heavy clays, ground limestone shall be spread at the rate of 4-8 tons/acre (200-400 pounds per 1,000 square feet) prior to the placement of topsoil. Lime shall be distributed uniformly over designated areas and worked into the soil in conjunction with tillage operations as described in the following procedures.
- For sites having disturbed areas under 5 acres:
 - Place topsoil (if required) and apply soil amendments as specified in 20.0 Vegetative Stabilization - Section 1 - Vegetative Stabilization Methods and Materials.
- For sites having disturbed areas over 5 acres:
 - On soil meeting Topsoil specifications, obtain test results dictating fertilizer and lime amendments required to bring the soil into compliance with the following:
 - pH for topsoil shall be between 6.0 and 7.5. If

TEMPORARY SEEDING NOTES

Apply to graded or cleared areas likely to be redisturbed where a short-term vegetative cover is needed.

Seedbed Preparation: Loosen upper three inches of soil by raking, discing or other acceptable means before seeding (unless previously loosened).

Soil Amendments: Apply 600 lbs per acre 10-10-10 fertilizer (14 lbs/1000 sq ft).

Seeding: For periods March 1 thru April 30 and from August 15 thru November 15, seed with 2-1/2 bushel per acre of annual ryegrass (3.2 lbs./1000 sq.ft.). For the period May 1 thru August 14, seed with 3 lbs per acre of weeping lovegrass (.07 lbs/1000 sq ft). For the period November 16 thru February 28, protect site by applying 2 tons per acre of well anchored straw mulch and seed as soon as possible in the spring, or use sod.

Mulching: Apply 1-1/2 to 2 tons per acre (70 to 90 lbs/1000 sq ft) of unrotted small grain straw immediately after seeding. Anchor mulch immediately after application using mulch anchoring tool or 218 gal per acre (5 gal/1000 sq ft) of emulsified asphalt on flat areas. On slopes, 8 ft or higher, use 348 gal per acre (8 gal/1000 sq ft) for anchoring.

TEMPORARY SEEDING NOTES

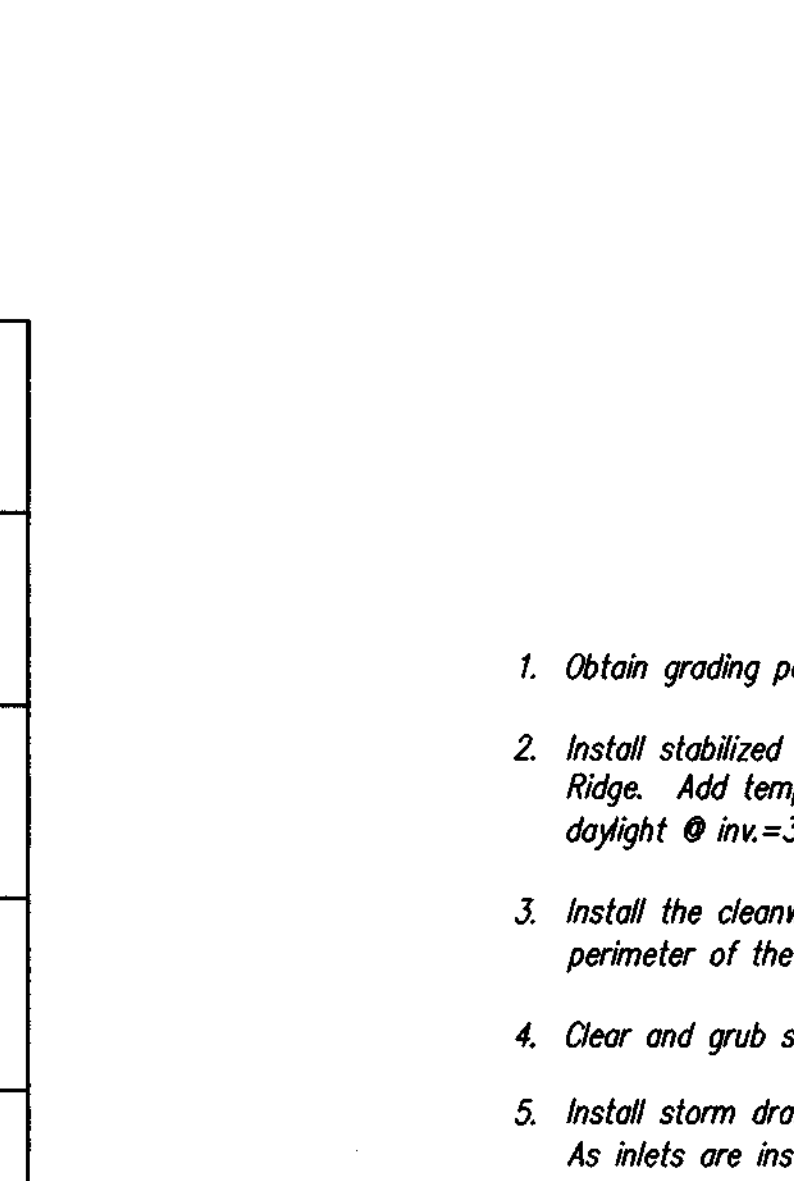
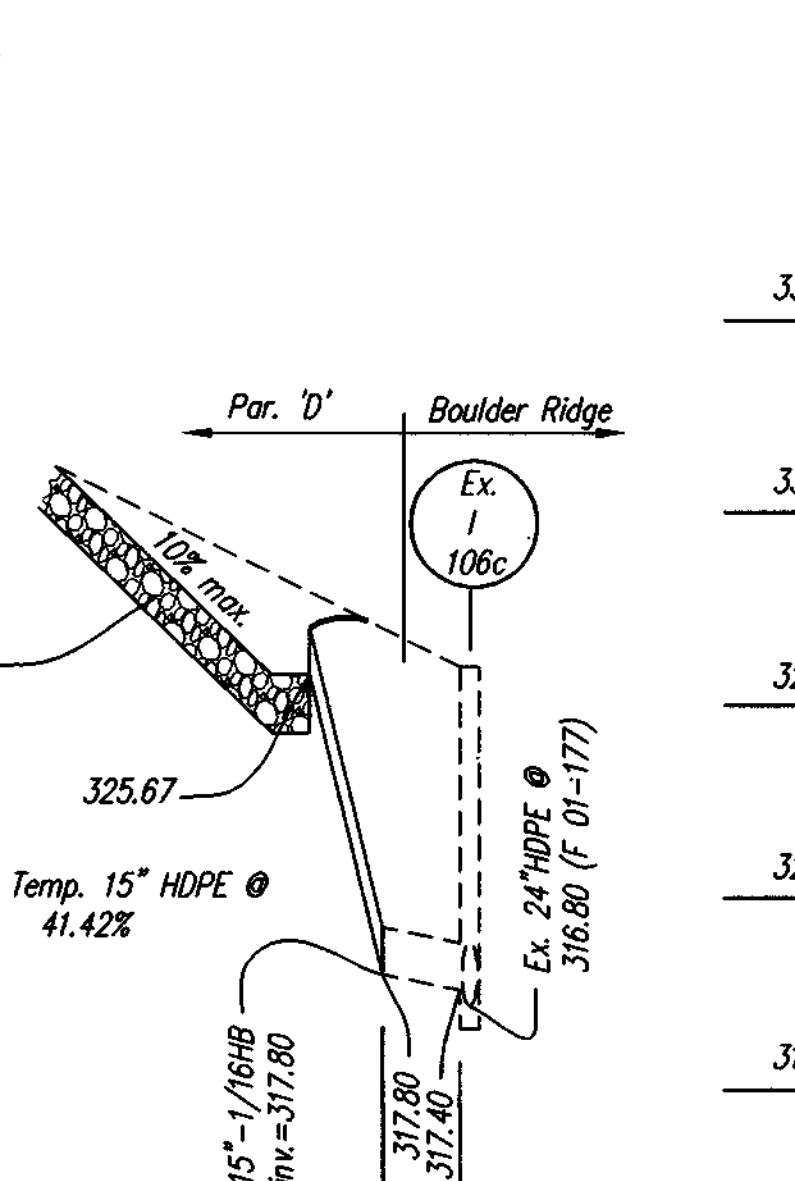
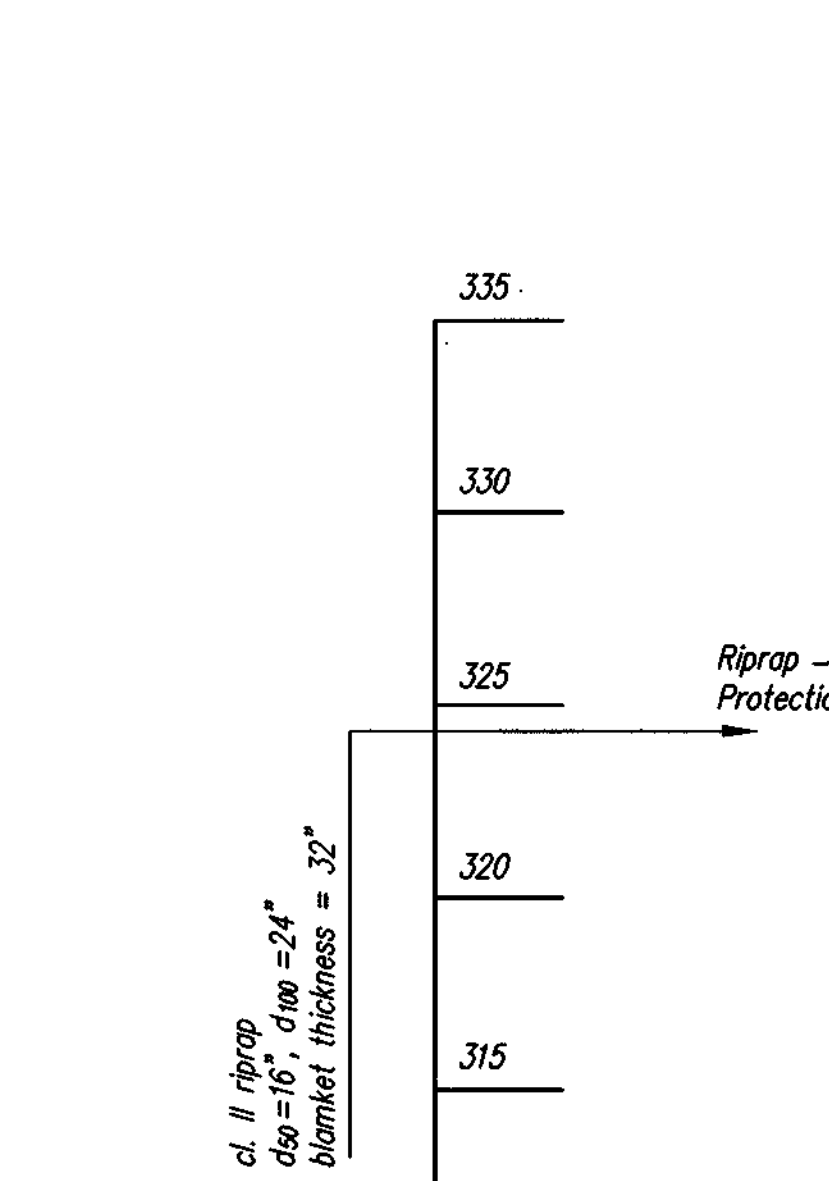
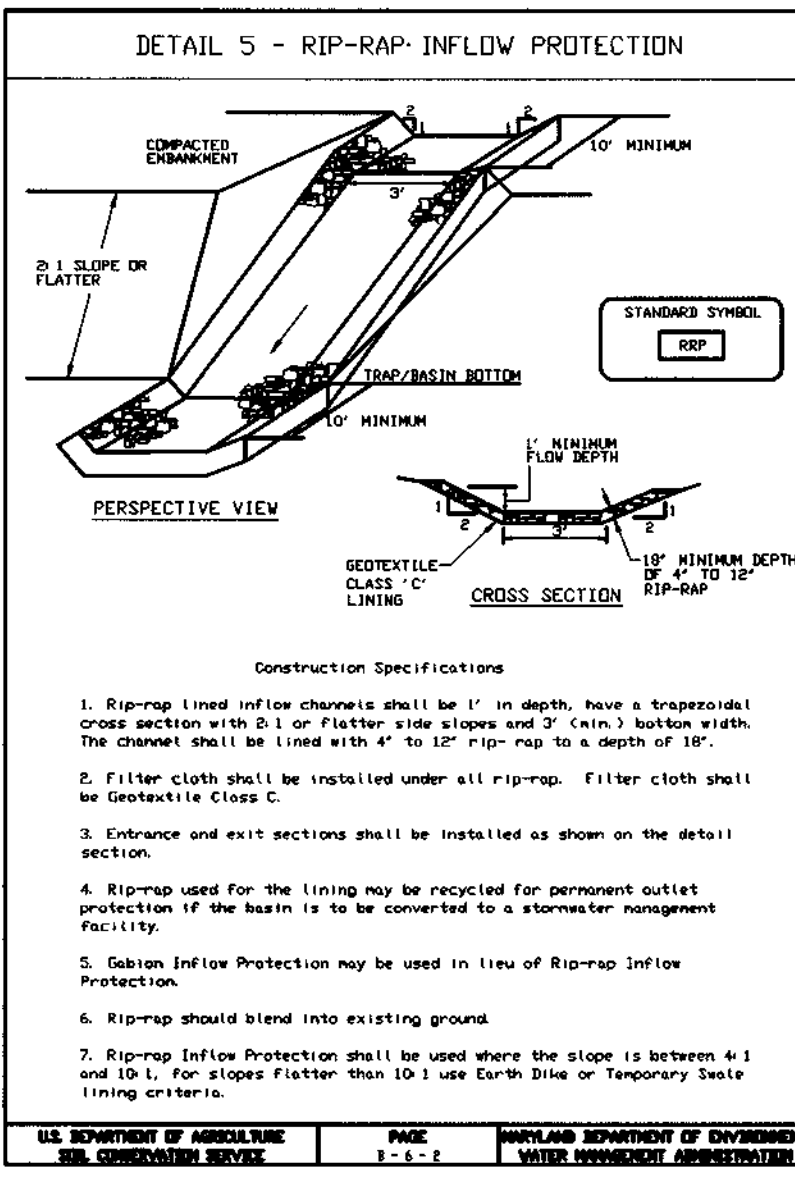
Apply to graded or cleared areas likely to be redisturbed where a short-term vegetative cover is needed.

Seedbed Preparation: Loosen upper three inches of soil by raking, discing or other acceptable means before seeding (unless previously loosened).

Soil Amendments: Apply 600 lbs per acre 10-10-10 fertilizer (14 lbs/1000 sq ft).

Seeding: For periods March 1 thru April 30 and from August 15 thru November 15, seed with 2-1/2 bushel per acre of annual ryegrass (3.2 lbs./1000 sq.ft.). For the period May 1 thru August 14, seed with 3 lbs per acre of weeping lovegrass (.07 lbs/1000 sq ft). For the period November 16 thru February 28, protect site by applying 2 tons per acre of well anchored straw mulch and seed as soon as possible in the spring, or use sod.

Mulching: Apply 1-1/2 to 2 tons per acre (70 to 90 lbs/1000 sq ft) of unrotted small grain straw immediately after seeding. Anchor mulch immediately after application using mulch anchoring tool or 218 gal per acre (5 gal/1000 sq ft) of emulsified asphalt on flat areas. On slopes, 8 ft or higher, use 348 gal per acre (8 gal/1000 sq ft) for anchoring.



SEQUENCE OF CONSTRUCTION

- Obtain grading permit and arrange an on-site pre-construction meeting. (1 day)
- Install stabilized construction entrance and silt fence/super silt fence along Boulder Ridge. Add temporary storm drain diversion onto ex. stub B-1, extend pipe and daylight @ inv.=324.80. Grade swale and install riprap inflow protection. (3 days)
- Install the cleanwater diversion dike and silt fence/super silt fence around the perimeter of the site. (2 days)
- Clear and grub site and begin to rough grade. (2 weeks)
- Install storm drains per this plan and water and sewer per contract # As inlets are installed place ACIP or CIP as needed. (4 weeks)
- Install curb and gutter, sidewalks and base paving. (2 weeks)
- Fine grade and stabilize areas in accordance to the permanent seeding notes. (2 weeks)
- Install surface course paving with permission from the Sediment Control Inspector, remove sediment and erosion control devices and stabilize as necessary.

ENGINEER'S CERTIFICATE

I certify that this plan for erosion and sediment control represents a practical and workable plan based on my personal knowledge of the site conditions and that it was prepared in accordance with the requirements of the Howard Soil Conservation District.

Signature: [Signature] Date: 1/29/02

DEVELOPER'S/BUILDER'S CERTIFICATE

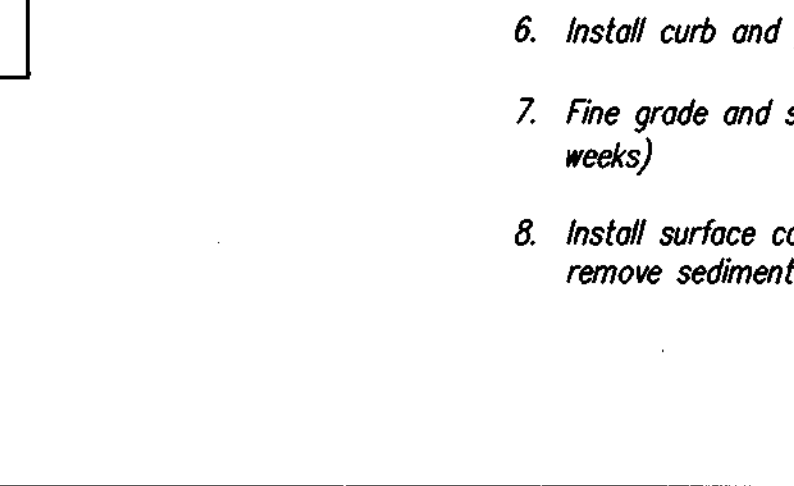
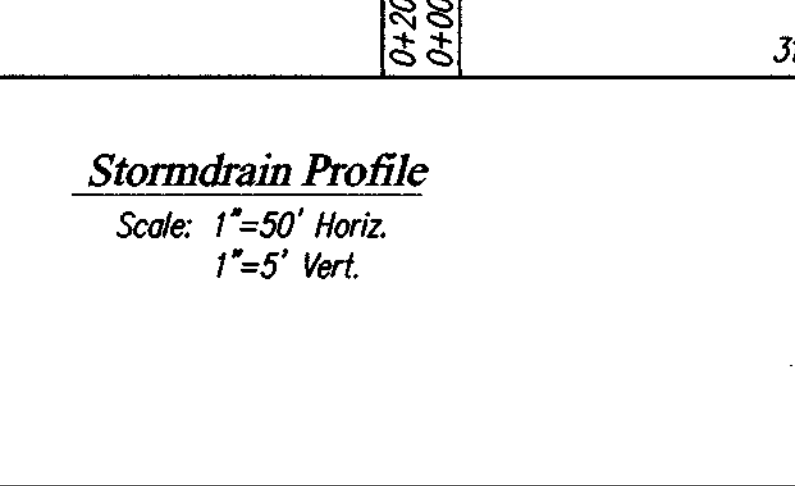
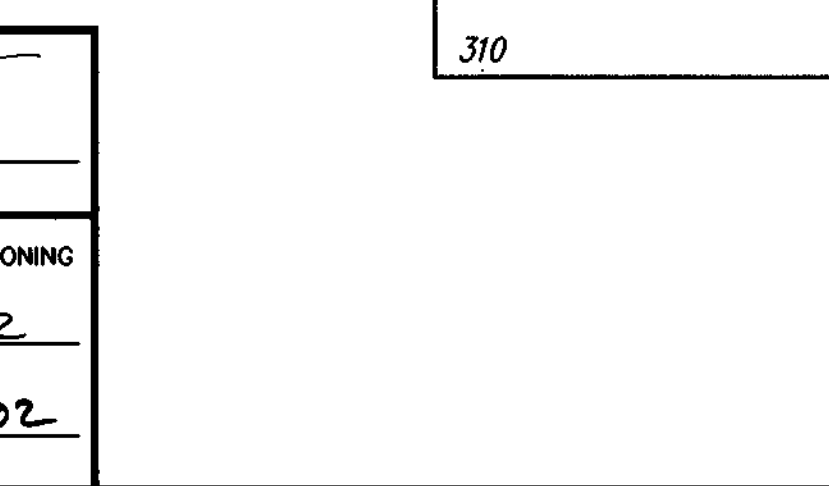
I/We certify that all development and/or construction will be done according to this plan, and that any responsible personnel involved in the construction project will have a Certificate of Attendance at a Maryland Department of the Environment Approved Training Program for the Control of Sediment and Erosion before beginning the project. I also authorize periodic on-site inspection by the HSCD.

Signature of Developer/Builder: [Signature] Date: 2/16/02

APPROVED: HOWARD COUNTY DEPARTMENT OF PUBLIC WORKS
Chief, Bureau of Highways [Signature] Date: 3/6/02

APPROVED: HOWARD COUNTY DEPARTMENT OF PLANNING & ZONING
Chief, Division of Land Development [Signature] Date: 3/2/02

Chief, Development Engineering Division [Signature] Date: 3/2/02



SEDIMENT CONTROL DETAILS

STONE LAKE - Lots C-1 through C-39
A Resubdivision of Parcel C

PREPARED FOR: GOODNER BUILDERS
10705 CHARTER DRIVE, SUITE 330, COLLEGE PARK, MD 20740
PH: 410-997-7400, ATTN: MR. STEVE APPLER

ELECTION DISTRICT No. 6

SEDIMENT CONTROL DETAILS

STONE LAKE - Lots C-1 through C-39
A Resubdivision of Parcel C

Signature of Developer/Builder: [Signature] Date: 2/16/02

SEDIMENT CONTROL DETAILS

STONE LAKE - Lots C-1 through C-39
A Resubdivision of Parcel C

Signature of Developer/Builder: [Signature] Date: 2/16/02

01075\design\finds\01075sp7.dwg	DES, DEV	DRN, JAU	CHK, DEV	DATE	REVISION	BY	APPR.												
<table border="1"> <tr> <td>SCALE</td> <td>ZONING</td> <td>G. L. W. FILE No.</td> </tr> <tr> <td>NO SCALE</td> <td>R-ED</td> <td>01075</td> </tr> <tr> <td>DATE</td> <td>TAX MAP - GRID</td> <td>SHEET</td> </tr> <tr> <td>Nov., 2001</td> <td>47-9/10</td> <td>7 OF 7</td> </tr> </table>								SCALE	ZONING	G. L. W. FILE No.	NO SCALE	R-ED	01075	DATE	TAX MAP - GRID	SHEET	Nov., 2001	47-9/10	7 OF 7
SCALE	ZONING	G. L. W. FILE No.																	
NO SCALE	R-ED	01075																	
DATE	TAX MAP - GRID	SHEET																	
Nov., 2001	47-9/10	7 OF 7																	