

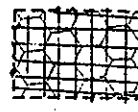
COORDINATE TABLE

PT.#	NORTHING	EASTING	PT.#	NORTHING	EASTING
1	571743.614	1324366.138	40	571301.561	1322144.806
2	571431.842	132456.208	41	571714.258	1322800.074
3	571194.352	1324024.563	50	571515.451	1322416.301
4	57153.186	1324042.124	51	571836.900	1323141.524
5	571635.195	1324122.345	52	571400.384	1323223.916
6	571615.901	1324219.014	53	571494.233	1323264.314
7	571621.262	1324238.067	54	571812.324	132316.910
8	571625.262	132415.944	55	571814.042	1323363.145
9	571625.262	1324065.164	56	571813.222	1323450.383
10	571625.262	1323968.230	57	571828.534	1323167.432
11	571625.262	1323318.874	58	571828.534	1323804.165
12	571640.1292	1322918.822	59	571804.603	1323485.034
42	571655.534	1322673.016	60	571803.664	1323526.772
43	571611.816	1322743.061	61	571905.121	132325.103
44	571613.224	132288.476	62	57145.854	132414.554
45	571024.314	1322661.673	63	57144.843	132438.529
46	571085.176	1322665.605	64	57123.953	132445.431
47	571113.111	1322688.164	65	57133.184	1325171.344

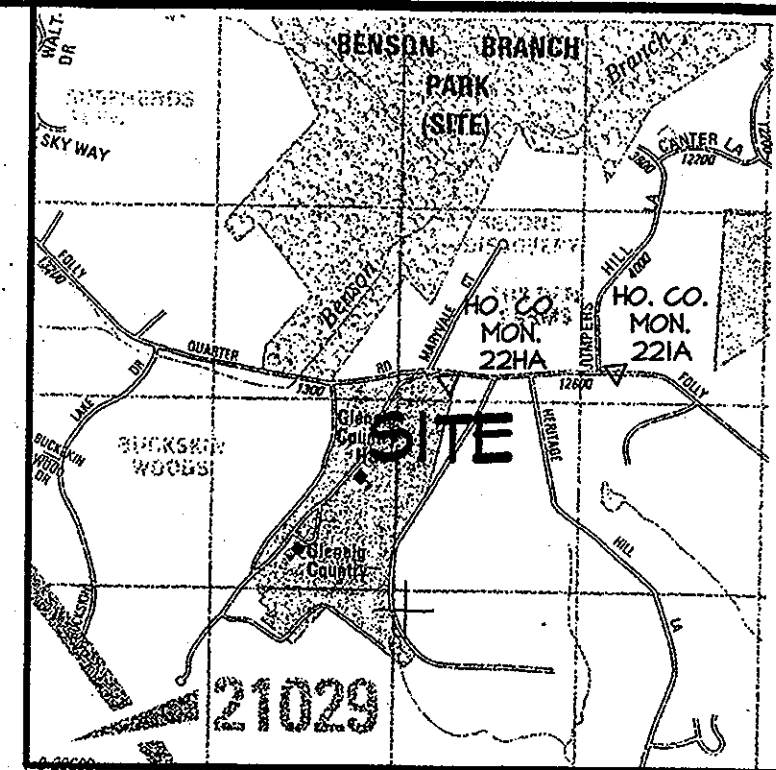
LEGEND:



Denotes RETENTION FOREST CONSERVATION EASEMENT AREA TO BE ABANDONED FROM EXISTING RETENTION FOREST CONSERVATION EASEMENT 1 AS SHOWN ON FOREST CONSERVATION EASEMENT PLAT M.D.R. 15507 AS DESCRIBED IN THE AMENDED DEED OF FOREST CONSERVATION EASEMENT RECORDED IN LIBER 6328 FOLIO 0541.



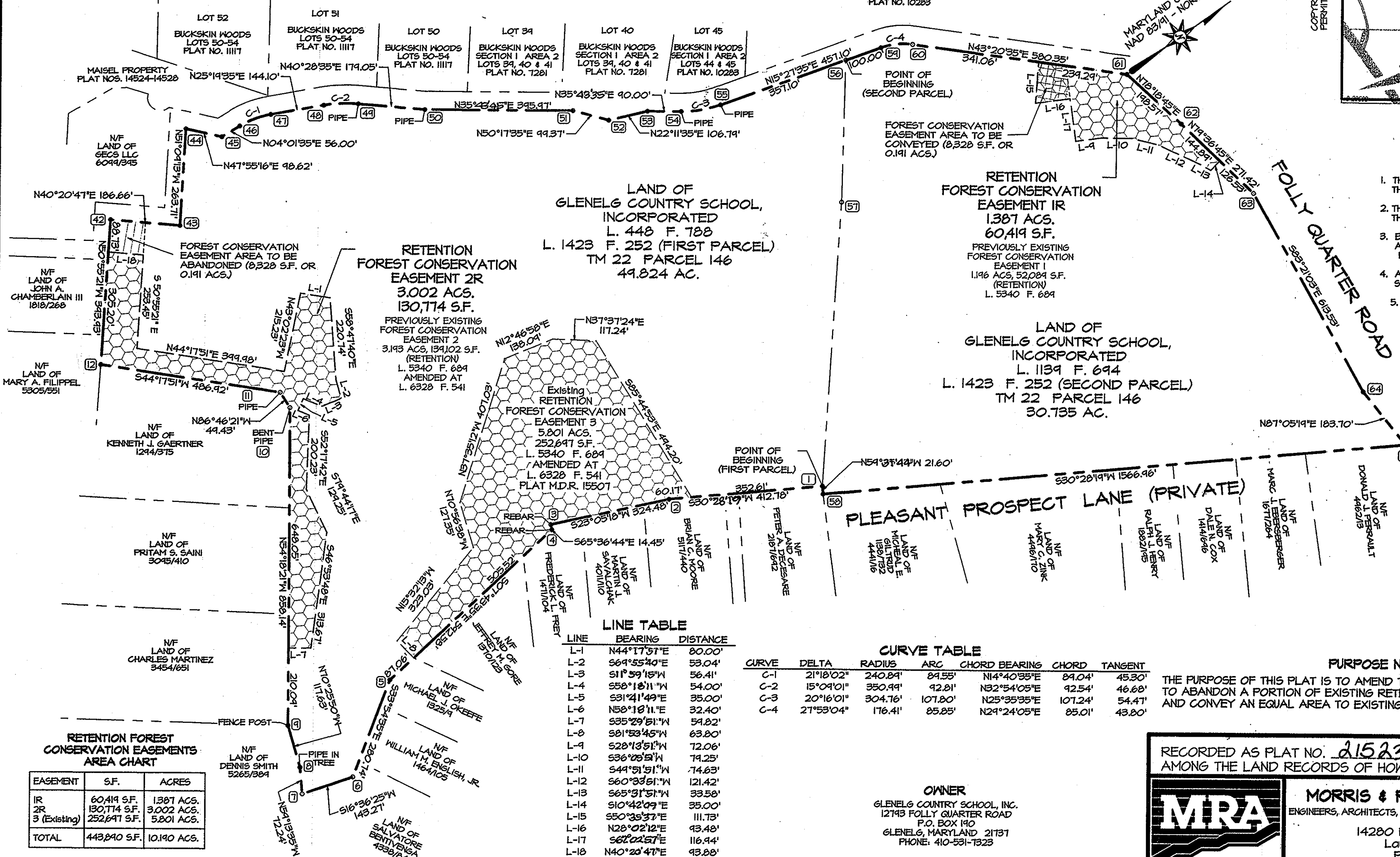
Denotes RETENTION FOREST CONSERVATION EASEMENT AREA TO BE CONVEYED TO EXISTING RETENTION FOREST CONSERVATION EASEMENT 2 AS SHOWN ON FOREST CONSERVATION EASEMENT PLAT M.D.R. 15507 AND DESCRIBED IN THE DEED OF FOREST CONSERVATION EASEMENT RECORDED IN LIBER 5340 FOLIO 0694.



VICINITY MAP
1" = 2000'

GENERAL NOTES

1. THE SUBJECT PROPERTY IS ZONED RR-DEO PER THE CURRENT, 1998 COMPREHENSIVE ZONING PLAN.
2. THERE ARE EXISTING STRUCTURES LOCATED ON THE SITE TO REMAIN.
3. BEARINGS AND COORDINATES AS SHOWN HEREON ARE BASED ON THE MARYLAND STATE SYSTEM OF PLANE COORDINATE SYSTEM NAD 83/91.
4. APPLICABLE DPZ FILE NUMBERS: SDP-01-069(FG-A), BA-44-51 E&V.
5. THIS PROJECT COMPLIES WITH THE REQUIREMENTS OF SECTION 16.1200 OF THE HOWARD COUNTY CODE FOR FOREST CONSERVATION PROVIDED BY 10.19 ACRES OF ON-SITE RETENTION.
6. THIS PLAT IS BASED ON A PARTIAL BOUNDARY SURVEY CONDUCTED BY MORRIS & RITCHIE ASSOCIATES ON OR ABOUT APRIL, 2004.
7. THE FOREST CONSERVATION EASEMENTS HAVE BEEN ESTABLISHED TO FULFILL THE REQUIREMENTS OF THIS SITE WITH RESPECT TO SECTION 16.1200 OF THE HOWARD COUNTY FOREST CONSERVATION ACT. NO CLEARING, GRADING OR CONSTRUCTION IS PERMITTED WITHIN THE FOREST CONSERVATION EASEMENTS, HOWEVER, FOREST MANAGEMENT PRACTICES AS DEFINED IN THE DEED OF FOREST CONSERVATION EASEMENTS ARE ALLOWED.



LINE TABLE

LINE	BEARING	DISTANCE
L-1	N44°17'31"E	80.00'
L-2	S69°55'40"E	53.04'
L-3	S11°59'15"W	56.41'
L-4	S58°18'11"W	54.00'
L-5	S31°41'49"E	35.00'
L-6	N58°18'11"E	32.40'
L-7	S35°29'51"W	59.82'
L-8	S81°53'45"W	63.80'
L-9	S28°13'51"W	72.06'
L-10	S36°09'51"W	74.25'
L-11	S44°51'51"W	74.63'
L-12	S60°33'51"W	121.42'
L-13	S65°31'51"W	33.58'
L-14	S10°42'09"E	35.00'
L-15	S50°35'37"E	111.73'
L-16	N28°02'12"E	43.48'
L-17	S67°02'57"E	116.94'
L-18	N40°20'47"E	93.88'

CURVE TABLE

CURVE	DELTA	RADIUS	ARC	CHORD BEARING	CHORD	TANGENT
C-1	21°18'02"	240.84'	84.55'	N14°40'35"E	84.04'	45.30'
C-2	15°09'01"	350.99'	92.81'	N32°54'05"E	92.54'	46.68'
C-3	20°16'01"	304.76'	107.80'	N25°35'35"E	107.24'	54.47'
C-4	27°53'04"	176.41'	85.85'	N29°24'05"E	85.01'	43.80'

RETENTION FOREST CONSERVATION EASEMENTS AREA CHART

EASEMENT	S.F.	ACRES
IR	60,419 S.F.	1.387 ACRES
2R	130,774 S.F.	3.002 ACRES
3R (Existing)	252,697 S.F.	5.801 ACRES
TOTAL	443,890 S.F.	10.190 ACRES

PURPOSE NOTE
THE PURPOSE OF THIS PLAT IS TO AMEND THE PREVIOUS PLAT NO. MDR 15507 AND TO ABANDON A PORTION OF EXISTING RETENTION CONSERVATION EASEMENT 2 AND CONVEY AN EQUAL AREA TO EXISTING RETENTION CONSERVATION EASEMENT 1.

RECORDED AS PLAT NO. 21523 ON 3/4/11 AMONG THE LAND RECORDS OF HOWARD COUNTY, MD.



MORRIS & RITCHIE ASSOCIATES, INC.
ENGINEERS, ARCHITECTS, PLANNERS, SURVEYORS & LANDSCAPE ARCHITECTS
14280 Park Center Drive, Suite A
Laurel, Maryland 20707
Phone: 410-792-9792
Fax: 410-792-7395

APPROVED
HOWARD COUNTY DEPARTMENT OF PLANNING AND ZONING
K. J. Sheehan
DIRECTOR
DATE: 3/20/11

OWNER'S CERTIFICATE
GLENELG COUNTRY SCHOOL, INCORPORATED, OWNER OF THE PROPERTY SHOWN AND DESCRIBED HEREON, HEREBY ADOPTS THIS PLAN IN CONSIDERATION OF THE APPROVAL OF THIS PLAT OF FOREST CONSERVATION EASEMENT BY THE DEPARTMENT OF PLANNING AND ZONING, TO ESTABLISH A FOREST CONSERVATION EASEMENT.
FOR: GLENELG COUNTRY SCHOOL, INC.
BY: *William Barry Shadrach* DATE: 12-10-10
DIRECTOR OF BUSINESS AFFAIRS
WITNESSES: *Tom Miller*

SURVEYOR'S CERTIFICATE
I HEREBY CERTIFY THAT THE FINAL EASEMENT PLAT SHOWN HEREON IS CORRECT, THAT IT DEFINES A FOREST CONSERVATION EASEMENT ON ALL OR A PORTION OF A PARCEL OF GROUND CONVEYED BY DALE Z. MAISEL AND LOIS M. MAISEL TO GLENELG COUNTRY SCHOOL, INCORPORATED BY DEED DATED DECEMBER 2, 1965 AND RECORDED IN THE LAND RECORDS OF HOWARD COUNTY, MARYLAND IN LIBER 448, FOLIO 188 AND A PARCEL OF GROUND CONVEYED BY DALE Z. MAISEL AND GLENELG MANOR ASSOCIATES TO GLENELG COUNTRY SCHOOL, INCORPORATED BY DEED DATED JANUARY 21, 1985 AND RECORDED AMONG SAID LAND RECORDS IN LIBER 1894, FOLIO 694, SAID PARCELS SUBSEQUENTLY BEING CONVEYED BY GLENELG COUNTRY SCHOOL, INCORPORATED TO GLENELG COUNTRY SCHOOL, INCORPORATED BY DEED OF CORRECTION DATED DECEMBER 31, 1985 AND RECORDED AMONG SAID LAND RECORDS IN LIBER 14231, FOLIO 252, AND THAT ALL MONUMENTS SHOWN HEREON WERE IN PLACE AT THE TIME OF THE ORIGINAL SURVEY.
Kenneth L. Evans, Jr. DATE: 12/10/2010
PROFESSIONAL LAND SURVEYOR
MD. REG. NO. 21095
FOR: MORRIS & RITCHIE ASSOCIATES, INC.

SURVEYOR'S SEAL
Kenneth L. Evans, Jr.
PROFESSIONAL LAND SURVEYOR
MD. REG. NO. 21095

AMENDED PLAT OF FOREST CONSERVATION EASEMENTS PROPERTY OF
GLENELG COUNTRY SCHOOL, INC.
SDP-01-069(FG-A)
FIFTH ELECTION DISTRICT
HOWARD COUNTY, MARYLAND
TAX MAP 22 GRID 22 PARCEL 146 ZONED: RR-DEO
SHEET 1 OF 1
SCALE: 1"=200' DATE: 12/10/2010 DRAWN BY: MP REVIEW BY: KLE JOB NO: 12189