

OWNER DEDICATION:

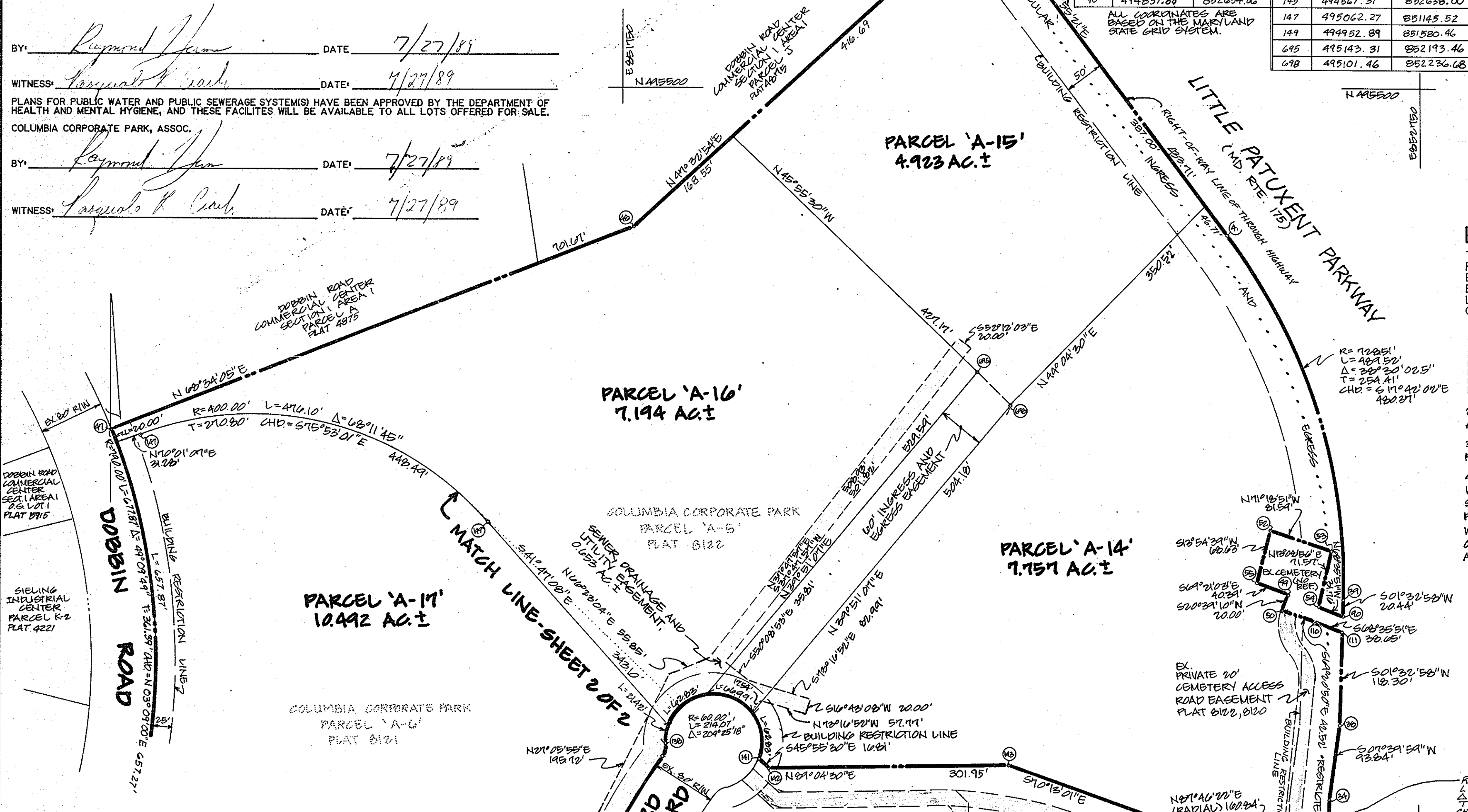
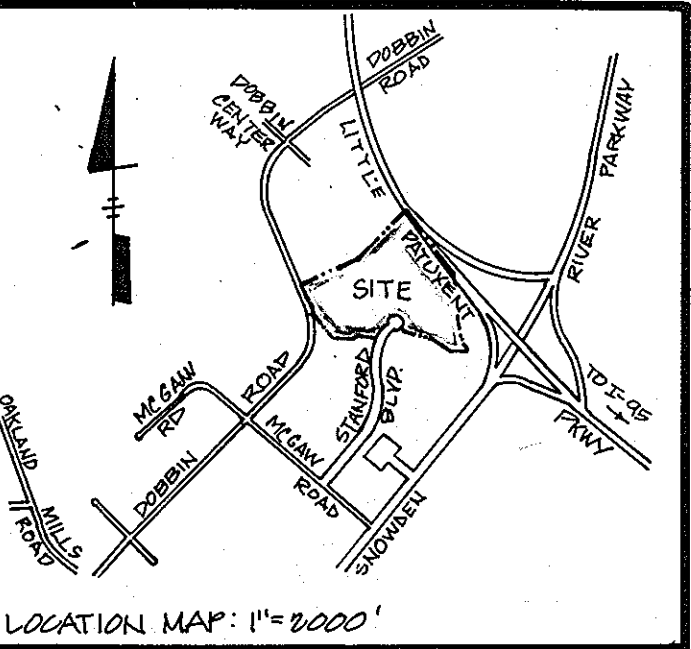
WE, COLUMBIA CORPORATE PARK, ASSOC., A MARYLAND GENERAL PARTNERSHIP, OWNER OF THE PROPERTY SHOWN AND DESCRIBED HEREON, HEREBY ADOPT THIS PLAN OF SUBDIVISION, AND IN CONSIDERATION OF THE APPROVAL OF THIS PLAN BY THE DEPARTMENT OF PLANNING AND ZONING, ESTABLISH THE MINIMUM BUILDING RESTRICTION LINES AND GRANT UNTO HOWARD COUNTY, MARYLAND, ITS SUCCESSORS AND ASSIGNS, (1) THE RIGHT TO LAY, CONSTRUCT AND MAINTAIN SEWERS, DRAINS, WATER PIPES, AND OTHER MUNICIPAL UTILITIES AND SERVICES, IN AND UNDER ALL ROADS AND STREET RIGHT-OF-WAYS AND THE SPECIFIC EASEMENT AREAS SHOWN HEREON, (2) THE RIGHT TO REQUIRE DEDICATION FOR PUBLIC USE THE BEDS OF THE STREETS AND/OR ROADS OR FLOODPLAINS AND OPEN SPACE WHERE APPLICABLE AND FOR GOOD AND OTHER VALUABLE CONSIDERATION, HEREBY GRANT THE RIGHT AND OPTION TO HOWARD COUNTY TO ACQUIRE THE FEE SIMPLE TITLE TO THE BEDS OF THE STREETS AND/OR ROADS AND FLOODPLAINS, STORM DRAINAGE FACILITIES AND OPEN SPACE WHERE APPLICABLE (3) THE RIGHT TO REQUIRE DEDICATION OF WATERWAYS AND DRAINAGE EASEMENTS FOR THE SPECIFIC PURPOSE OF THEIR CONSTRUCTION, REPAIR AND MAINTENANCE, AND (4) THAT NO BUILDING OR SIMILAR STRUCTURE OF ANY KIND SHALL BE ERRECTED ON OR OVER THE SAID EASEMENTS AND RIGHT-OF-WAYS.

BY: Raymond J. Jones DATE: 7/27/89
 WITNESS: Lazaro K. Carb DATE: 7/27/89
 PLANS FOR PUBLIC WATER AND PUBLIC SEWERAGE SYSTEM(S) HAVE BEEN APPROVED BY THE DEPARTMENT OF HEALTH AND MENTAL HYGIENE, AND THESE FACILITIES WILL BE AVAILABLE TO ALL LOTS OFFERED FOR SALE.
 COLUMBIA CORPORATE PARK, ASSOC.
 BY: Raymond J. Jones DATE: 7/27/89
 WITNESS: Lazaro K. Carb DATE: 7/27/89

COORDINATES		
NO	NORTH	EAST
34	494605.37	852637.77
38	494648.37	852650.29
39	494838.31	852654.62
41	495315.94	852658.96
45	495662.67	852248.02
47	495070.29	851109.05
48	495326.68	851762.21

COORDINATES					
NO	NORTH	EAST	NO	NORTH	EAST
49	494864.44	852584.78	110	494830.73	852617.51
50	494845.72	852577.72	138	494675.98	851805.99
51	495721.69	852194.02	141	494654.90	851921.36
52	494945.30	852563.98	142	494643.21	851933.44
53	494919.16	852640.77	143	494648.08	852235.34
54	494849.47	852624.49	144	494561.06	852477.27
55	494878.68	852546.98	145	494567.31	852638.00
60	494837.88	852654.06	147	495062.27	851145.52
			149	494952.89	851580.46
			695	495143.31	852193.46
			698	495101.46	852236.68

ALL COORDINATES ARE BASED ON THE MARYLAND STATE GRID SYSTEM.



BENCH MARK
 BM # 234401 ELEVATION 307.49
 STANDARD CONC. MONUMENT SET FLUSH WITH SURFACE
 NORTH 491833.018 EAST 850000.103
 BM # 2342001 ELEVATION 288.24
 3/4" R.B. SET 0.3 FT. BELOW THE SURFACE
 NORTH 492142.801 EAST 850000.071

LEGEND
 TRACT OUTLINE ———
 R/W LINE ———
 EASEMENTS - - - - -
 BLDG. RESTRICTION LINE ———
 LOT LINE ———
 COORDINATES (10)

- NOTES:**
1. THE MINIMUM BUILDING SETBACK RESTRICTION FROM THE PROPERTY LINES AND THE RIGHT-OF-WAYS OF ANY PUBLIC ROAD OR STREET TO BE IN ACCORDANCE WITH THE RECORDED FINAL DEVELOPMENT PLAN CRITERIA PHASE IIT-A, RECORDED IN PLAT BOOK 20, FOLIOS 20A TO 21C.
 2. THE SUBJECT PROPERTY IS ZONED NT PER THE AUGUST 2, 1985 COMPREHENSIVE ZONING PLAN.
 3. STORM WATER MANAGEMENT HAS BEEN PROVIDED TO THESE PARCELS ON SEP 21-193.
 4. WATER AND SEWER SERVICE TO THESE LOTS WILL BE GRANTED UNDER THE PROVISIONS OF SECTION 18.122 B OF THE HOWARD COUNTY CODE. PUBLIC WATER AND PUBLIC SEWER ALLOCATION WILL BE GRANTED AT THE TIME OF THE ISSUANCE OF THE BUILDING PERMIT IF CAPACITY IS AVAILABLE AT THAT TIME.

TABULATION:

TOTAL NUMBER OF PARCELS TO BE RECORDED:	4
TOTAL AREA OF PARCELS TO BE RECORDED:	30.366 AC.±
TOTAL AREA OF PARCELS:	30.366 AC.±
TOTAL AREA OF PROP. RIGHT-OF-WAY DEDICATION:	NONE
TOTAL AREA OF RIGHT-OF-WAY WIDENING DEDICATION:	NONE
TOTAL AREA OF FLOODPLAIN DEDICATION:	NONE
TOTAL AREA OF THIS SHEET:	19.874 AC.±
TOTAL AREA OF SEWER, DRAINAGE AND UTILITY EASEMENT:	0.693 AC.±

APPROVED: HOWARD COUNTY DEPARTMENT OF PLANNING AND ZONING
[Signature] DATE: 11.3.89
 PLANNING DIRECTOR

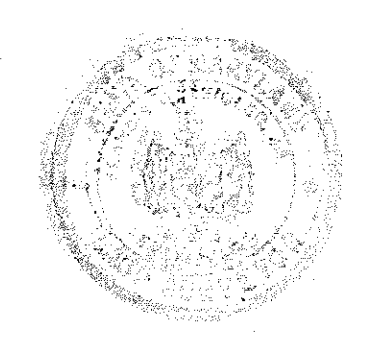
ENGINEER
G. W. STEPHENS JR. & ASSOC. INC.
 303 ALLEGHENY AVENUE
 TOWSON, MARYLAND 21204
 (301) 825-8120

APPROVED FOR PUBLIC WATER AND PUBLIC SEWERAGE SYSTEMS IN CONFORMANCE WITH THE MASTER PLAN OF WATER AND SEWERAGE FOR HOWARD COUNTY.
[Signature] DATE: 10/25/89
 HOWARD COUNTY HEALTH OFFICER

SURVEYORS' CERTIFICATE
 I HEREBY CERTIFY THAT THE FINAL PLAT SHOWN HEREON IS CORRECT, THAT IT IS A SUBDIVISION OF A PORTION OF THE LANDS WHICH BY DEED DATED SEPTEMBER 29, 1987 AND RECORDED AMONG THE LAND RECORDS OF HOWARD COUNTY, MARYLAND IN LIBER 1736 FOLIO 0082, WAS GRANTED AND CONVEYED BY AT&T TECHNOLOGIES, INC., TO COLUMBIA CORPORATE PARK, ASSOC., A MARYLAND GENERAL PARTNERSHIP AND WHICH IS SHOWN ON THE PLAT ENTITLED 'COLUMBIA CORPORATE PARK, PARCELS A-1-A-9, A RESUBDIVISION OF PARCEL A, COLUMBIA, SIELING INDUSTRIAL CENTER, SECTION 1, AREA 1, (23-17), RECORDED AMONG THE PLAT RECORDS OF HOWARD COUNTY, MARYLAND AS PLAT NUMBERS 8121 AND 8122, AND THAT ALL MONUMENTS ARE IN PLACE OR WILL BE IN PLACE PRIOR TO THE ACCEPTANCE OF THE STREETS IN THE SUBDIVISION BY HOWARD COUNTY, AS SHOWN IN ACCORDANCE WITH THE ANNOTATED CODE OF MARYLAND, AS AMENDED.

[Signature] DATE: 7/28/89
 REG. LAND SURVEYOR REG. NO. DATE

APPROVED FOR PUBLIC WATER AND PUBLIC SEWERAGE, STORM DRAINAGE SYSTEMS AND PUBLIC ROADS FOR HOWARD COUNTY DEPARTMENT OF PUBLIC WORKS.
[Signature] DATE: 10/23/89
 DIRECTOR



COLUMBIA CORPORATE PARK
 PARCELS 'A-14', 'A-15', 'A-16' AND 'A-17'
 A RESUBDIVISION OF PARCELS 'A-5' AND 'A-6'
 COLUMBIA CORPORATE PARK, PARCELS 'A-1' - 'A-9'
 PLATS 8121 AND 8122

HOWARD COUNTY, MARYLAND
 SCALE: 1" = 100'
 TAX MAP: 36
 PARCEL: 356

ELECTION DISTRICT 6
 EXISTING ZONING NT
 DATE: JULY 26, 1989
 SHEET 1 OF 2

FILE NOS.: S-87-24, FDP-117A, F-72-90C, P-87-43, F-88-109
 DRAWN BY: C.A.H.L., J.M.E. COMPS. BY: R.P.H. CHECKED BY: R.P.H., P.C. PN: 005607

OWNER DEDICATION

WE, COLUMBIA CORPORATE PARK, ASSOC., A MARYLAND GENERAL PARTNERSHIP, OWNER OF THE PROPERTY SHOWN AND DESCRIBED HEREON, HEREBY ADOPT THIS PLAN OF SUBDIVISION, AND IN CONSIDERATION OF THE APPROVAL OF THIS PLAN BY THE DEPARTMENT OF PLANNING AND ZONING, ESTABLISH THE MINIMUM BUILDING RESTRICTION LINES AND GRANT UNTO HOWARD COUNTY, MARYLAND, ITS SUCCESSORS AND ASSIGNS, (1) THE RIGHT TO LAY, CONSTRUCT AND MAINTAIN SEWERS, DRAINS, WATER PIPES AND OTHER MUNICIPAL UTILITIES AND SERVICES, AND UNDER ALL ROADS AND STREET RIGHT-OF-WAYS AND THE SPECIFIC EASEMENT AREAS SHOWN HEREON, (2) THE RIGHT TO REQUIRE DEDICATION FOR PUBLIC USE THE BEDS OF THE STREETS AND/OR ROADS OR FLOODPLAINS AND OPEN SPACE WHERE APPLICABLE AND FOR GOOD AND OTHER VALUABLE CONSIDERATION HEREBY GRANT THE RIGHT AND OPTION TO HOWARD COUNTY TO ACQUIRE THE FEE SIMPLE TITLE TO THE BEDS OF THE STREETS AND/OR ROADS AND FLOODPLAINS, STORM DRAINAGE FACILITIES AND OPEN SPACE WHERE APPLICABLE (3) THE RIGHT TO REQUIRE DEDICATION OF WATERWAYS AND DRAINAGE EASEMENTS FOR THE SPECIFIC PURPOSE OF THEIR CONSTRUCTION, REPAIR AND MAINTENANCE, AND (4) THAT NO BUILDING OR SIMILAR STRUCTURE OF ANY KIND SHALL BE ERRECTED ON OR OVER THE SAID EASEMENTS AND RIGHT-OF-WAYS.

BY: Raymond J. Juman DATE: 7/27/89

WITNESS: Suzanne R. Smith DATE: 7/27/89

PLANS FOR PUBLIC WATER AND PUBLIC SEWERAGE SYSTEMS HAVE BEEN APPROVED BY THE DEPARTMENT OF HEALTH AND MENTAL HYGIENE, AND THESE FACILITIES WILL BE AVAILABLE TO ALL LOTS OFFERED FOR SALE.

COLUMBIA CORPORATE PARK, ASSOC.

BY: Raymond J. Juman DATE: 7/27/89

WITNESS: Suzanne R. Smith DATE: 7/27/89

COLUMBIA CORPORATE PARK
PARCEL A-5
PLAT 8122

DOBBIN ROAD
COMMERCIAL CENTER
SECTION 1, AREA 1
PARCEL A
PLAT 4875

PARCEL 'A-16'
7.194 AC ±

PARCEL 'A-14'
7.757 AC ±

PARCEL 'A-15'
4.923 AC ±

PARCEL 'A-17'
10.442 AC ±

COLUMBIA CORPORATE PARK
PARCEL 'A-6'
PLAT 8121

DOBBIN ROAD

ROAD

BOULEVARD

STANFORD

LINE-SHEET 1 OF 2

SEWER DRAINAGE AND UTILITY EASEMENT, 0.053 AC ±

SEWER DRAINAGE AND UTILITY EASEMENT, 0.053 AC ±

SEWER DRAINAGE AND UTILITY EASEMENT, 0.053 AC ±

SEWER DRAINAGE AND UTILITY EASEMENT, 0.053 AC ±

SEWER DRAINAGE AND UTILITY EASEMENT, 0.053 AC ±

SEWER DRAINAGE AND UTILITY EASEMENT, 0.053 AC ±

SEWER DRAINAGE AND UTILITY EASEMENT, 0.053 AC ±

SEWER DRAINAGE AND UTILITY EASEMENT, 0.053 AC ±

SEWER DRAINAGE AND UTILITY EASEMENT, 0.053 AC ±

SEWER DRAINAGE AND UTILITY EASEMENT, 0.053 AC ±

SEWER DRAINAGE AND UTILITY EASEMENT, 0.053 AC ±

SEWER DRAINAGE AND UTILITY EASEMENT, 0.053 AC ±

SEWER DRAINAGE AND UTILITY EASEMENT, 0.053 AC ±

SEWER DRAINAGE AND UTILITY EASEMENT, 0.053 AC ±

SEWER DRAINAGE AND UTILITY EASEMENT, 0.053 AC ±

SEWER DRAINAGE AND UTILITY EASEMENT, 0.053 AC ±

SEWER DRAINAGE AND UTILITY EASEMENT, 0.053 AC ±

SEWER DRAINAGE AND UTILITY EASEMENT, 0.053 AC ±

SEWER DRAINAGE AND UTILITY EASEMENT, 0.053 AC ±

SEWER DRAINAGE AND UTILITY EASEMENT, 0.053 AC ±

SEWER DRAINAGE AND UTILITY EASEMENT, 0.053 AC ±

SEWER DRAINAGE AND UTILITY EASEMENT, 0.053 AC ±

SEWER DRAINAGE AND UTILITY EASEMENT, 0.053 AC ±

SEWER DRAINAGE AND UTILITY EASEMENT, 0.053 AC ±

SEWER DRAINAGE AND UTILITY EASEMENT, 0.053 AC ±

SEWER DRAINAGE AND UTILITY EASEMENT, 0.053 AC ±

COORDINATES		
NO.	NORTH	EAST
47	495070.29	85109.05
123	494243.62	851669.43
138	494675.98	851805.99
140	494660.47	851801.22
141	494654.90	851921.36
147	495062.27	851145.52
149	494952.89	851580.46
151	494241.17	851517.76
152	494195.03	851473.29
153	494191.92	851303.31
154	494414.02	851072.94

ALL COORDINATES ARE BASED ON THE MARYLAND STATE GRID SYSTEM.

LEGEND

- TRACT OUTLINE
- R/W LINE
- EASEMENTS
- BLDG. RESTRICTION LINE
- LOT LINES
- COORDINATES (47)

NOTES

1. THE MINIMUM BUILDING SETBACK RESTRICTION FROM THE PROPERTY LINES AND THE RIGHT-OF-WAY OF ANY PUBLIC ROAD OR STREET TO BE IN ACCORDANCE WITH THE RECORDED FINAL DEVELOPMENT PLAN CRITERIA PHASE 117-A, RECORDED IN PLAT BOOK 20, FOLIOS 204 TO 210.
2. THE SUBJECT PROPERTY IS ZONED NT PER THE AUGUST 2, 1985 COMPREHENSIVE ZONING PLAN.
3. STORM WATER MANAGEMENT HAS BEEN PROVIDED TO THESE PARCELS ON EOP 81-KB.
4. WATER AND SEWER SERVICE TO THESE LOTS WILL BE GRANTED UNDER THE PROVISIONS OF SECTION 18.122(B) OF THE HOWARD COUNTY CODE. PUBLIC WATER AND PUBLIC SEWER ALLOCATION WILL BE GRANTED AT THE TIME OF THE ISSUANCE OF THE BUILDING PERMIT IF CAPACITY IS AVAILABLE AT THAT TIME.

COLUMBIA CORPORATE PARK
PARCEL 'A-7'
PLAT NO 8121

TABULATION

TOTAL NUMBER OF PARCELS TO BE RECORDED: 4
 TOTAL AREA OF PLATS TO BE RECORDED: 30.366 AC ±
 TOTAL AREA OF PARCELS: 30.366 AC ±
 TOTAL AREA OF PROP. RIGHT-OF-WAY DEDICATION: NONE
 TOTAL AREA OF RIGHT-OF-WAY WIDENING DEDICATION: NONE
 TOTAL AREA OF FLOODPLAIN DEDICATION: NONE
 TOTAL AREA OF THIS SHEET: 10.442 AC ±
 TOTAL AREA OF SEWER, DRAINAGE AND UTILITY EASEMENT: 0.053 AC ±

APPROVED BY HOWARD COUNTY DEPARTMENT OF PLANNING AND ZONING
[Signature] DATE: 11.2.89
 PLANNING DIRECTOR

ENGINEER
G. W. STEPHENS JR. & ASSOC. INC.
 303 ALLEGHENY AVENUE
 TOWSON, MARYLAND 21204
 (301) 825-8120

REASON FOR RESUBDIVISION, TO ADJUST LOT LINES FOR EXISTING PARCELS A-5 AND A-6 AND ADD ADDITIONAL LOT LINES TO CREATE PARCELS A-14, A-15, A-16 AND A-17

RECORDED AS PLAT NO. 8997
 ON 10/13/89 AMONG THE LAND RECORDS OF HOWARD COUNTY, MARYLAND.

APPROVED FOR PUBLIC WATER AND PUBLIC SEWERAGE SYSTEMS IN CONFORMANCE WITH THE MASTER PLAN OF WATER AND SEWERAGE FOR HOWARD COUNTY.

Joyce M. Boydland per [Signature] 10/25/89
 HOWARD COUNTY HEALTH OFFICER DATE

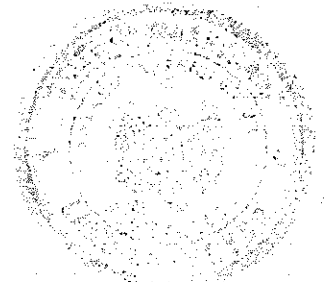
APPROVED FOR PUBLIC WATER AND PUBLIC SEWERAGE, STORM DRAINAGE SYSTEMS AND PUBLIC ROADS FOR HOWARD COUNTY DEPARTMENT OF PUBLIC WORKS.

James J. [Signature] 10/26/89
 DIRECTOR DATE

SURVEYORS' CERTIFICATE

I HEREBY CERTIFY THAT THE FINAL PLAT SHOWN HEREON IS CORRECT, THAT IT IS A SUBDIVISION OF A PORTION OF THE LANDS WHICH BY DEED DATED SEPTEMBER 29, 1987 AND RECORDED AMONG THE LAND RECORDS OF HOWARD COUNTY, MARYLAND IN LIBER 1736 FOLIO 0082, WAS GRANTED AND CONVEYED BY AT&T TECHNOLOGIES, INC. TO COLUMBIA CORPORATE PARK, ASSOC., A MARYLAND GENERAL PARTNERSHIP AND WHICH IS SHOWN ON THE PLAT ENTITLED "COLUMBIA CORPORATE PARK, PARCELS A-1 - A-9, A RESUBDIVISION OF PARCEL A, COLUMBIA, SIELING INDUSTRIAL CENTER, SECTION 1, AREA 1, (23-17), RECORDED AMONG THE PLAT RECORDS OF HOWARD COUNTY, MARYLAND AS PLAT NOS. 8121 AND 8122, AND THAT ALL MONUMENTS ARE IN PLACE OR WILL BE IN PLACE PRIOR TO THE ASSESSMENT OF THE STREETS IN THE SUBDIVISION BY HOWARD COUNTY, AS SHOWN IN ACCORDANCE WITH THE ANNOTATED CODE OF MARYLAND, AS AMENDED.

Jervis W. [Signature] 43,5702 3/28/89
 REG. LAND SURVEYOR REG. NO. DATE



COLUMBIA CORPORATE PARK

PARCELS 'A-14', 'A-15', 'A-16' AND 'A-17'

A RESUBDIVISION OF PARCELS 'A-5' AND 'A-6'
 COLUMBIA CORPORATE PARK, PARCELS 'A-1' - 'A-9'
 PLATS 8121 AND 8122

HOWARD COUNTY, MARYLAND
 SCALE: 1" = 100'
 TAX MAP: 36
 PARCEL: 356

ELECTION DISTRICT 6
 EXISTING ZONING NT
 DATE: JULY 26, 1989
 SHEET 2 OF 2

FILE NOS.: S-87-24, FDP-117A, F-72-90C, P-87-43, F-88-109

DRAWN BY: C.A.H.L., J.M.E.

COMPS. BY: R.P.H.

CHECKED BY: R.P.H., P.C.

PN: 005607