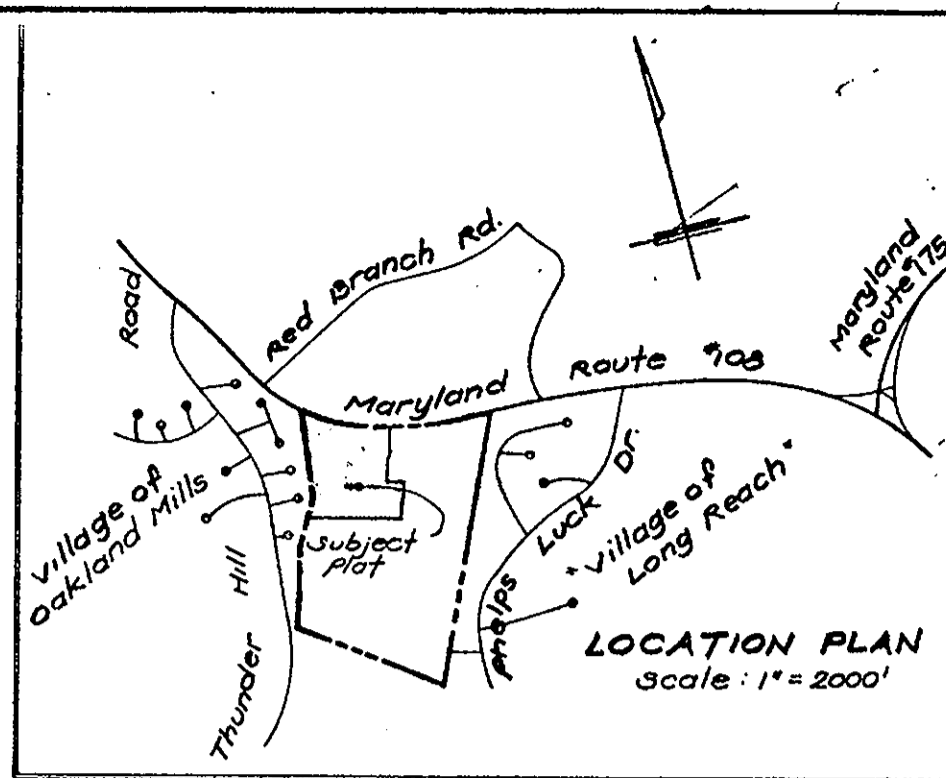


The Lots or Parcels shown on this plat are Subject to the supplemental sewer in-kind-of Construction charge created by Section 30.311A of the Howard County Code of Executive Order No. 72-9.

TOTAL TABULATION (PLATS 1&2)

TOTAL NUMBER OF LOTS	82
TOTAL AREA OF LOTS	28.35 ACRES
TOTAL AREA OF ROADS	7.65 ACRES
TOTAL AREA	36.00 ACRES



TABULATION PLAT 1

NUMBER OF LOTS	30
AREA OF LOTS	11.8163 ACRES
AREA OF ROADS	3.3512 ACRES
TOTAL AREA	15.1675 ACRES

**SURVEYOR'S CERTIFICATE**

I, Ronald W. Broyles, hereby certify that the Plan shown hereon is correct, that it is a part of the Land which by Deed dated June 7, 1974, and Recorded among the Land Records of Howard County, Maryland in Liber 685 Folio 562 was conveyed by H.A. Duncan & B.A. O'Neill to Colonial Corner Service Corporation. I further certify that the requirements of Section 3-108, Article 21 of the Annotated Code of Maryland (As Amended) as far as they relate to the making of this plat have been complied with.

Ronald W. Broyles, Reg. #3989

Date

**OWNER CERTIFICATE**

We, the Colonial Corner Service Corporation, owners of the property shown and described hereon adopt this plan of subdivision and the fee simple title to the beds of the streets and/or roads shown hereon, including the land dedicated for the widening of Md. Route 108; and in consideration of the approval of this plat by the Howard County Office of Planning and Zoning, we, ourselves, our heirs, or assigns, do hereby give and grant unto Howard County, Maryland, the right and option to acquire for the consideration of One Dollar, the fee simple title to the beds of the streets and/or roads shown hereon, within the period of five years from the date of the recording of this plat among the Land Records, N507000 of Howard County. Witness our hands and seals, this day of June 30, 1976.

Robert E. Hecht Sr., President  
Colonial Corner Service Corporation  
Fayette & St. Paul Sts. Balto, Md. 21202

NOTE: Maintenance of all storm drains and/or drainage easements shown hereon, other than storm drains in road rights of way are the responsibility of the property owner, its successors and assigns.

**COORDINATES**

NR	North	East	NR	North	East
111	508300.64	848661.30	259	507884.04	848632.56
109	507297.39	848301.50	261	507405.70	848608.19
110	507403.02	848240.89	262	507333.55	848597.67
112	509379.43	848070.85	264	507336.54	848622.90
113	507954.21	849058.70	265	507237.17	849065.41
114	507824.20	849155.46	272	507209.07	849071.75
115	507786.35	849226.26	273	507304.19	849090.31
221	507707.27	848556.29	368	507258.48	848321.10
222	507673.87	848272.48	373	507141.12	848225.27
230	507610.93	848221.22	428	507588.15	849091.31
231	507627.72	848251.09	432	507334.29	849047.00
233	507720.01	848609.43	434	507387.18	849213.30
234	507709.20	848683.24	436	507233.47	849102.92
236	507627.88	848618.09	439	507339.88	849081.82
237	507658.30	848648.13	460	507035.19	849095.16
238	507748.30	848804.88	461	507186.85	849144.03
239	507772.07	848782.99	791	507904.54	849095.08
241	507804.87	848769.75	792	507322.75	849007.97
242	507754.07	848714.81	799	507249.70	849009.53
244	507738.21	848748.21	800	507371.02	849044.85
245	507714.43	848786.09	801	507889.27	849057.14
248	507850.41	848847.19	802	507851.51	849060.03
249	507819.33	848864.41	805	507888.34	849129.01
251	507754.01	848819.87	805	507844.06	849181.88
252	507721.83	848850.75	125	508321.04	848646.33
254	507867.20	848859.47			
255	507829.28	848758.59			
256	507831.88	848744.23			

Plot Two Section 1 Area 1 "GLENMONT"

**CURVE DATA**

From	To	Radius	Length	Δ	Tan.	Chd Brg. & Dist.
233	234	25.00'	39.89'	51°25'00"	25.63'	S68°00'24"W 35.79'
234	235	175.00'	72.24'	23°39'06"	36.64'	N54°27'33"W 71.73'
235	236	50.00'	36.14'	41°24'34"	18.90'	N21°55'43"W 35.36'
241	242	50.00'	36.14'	22°49'09"	18.90'	S63°20'17"E 35.36'
242	243	50.00'	36.14'	25°18'29"	18.90'	S55°17'14"E 35.36'
243	244	225.00'	35.56'	8°44'13"	22.83'	S25°32'38"E 39.71'
244	245	225.00'	35.56'	1°00'10"	22.83'	S16°21'20"W 17.45'
245	246	103.00'	18.03'	30°00'00"	25.00'	S60°51'15"W 35.36'
246	247	103.00'	18.03'	30°00'00"	25.00'	N53°26'28"W 35.36'
247	248	103.00'	18.03'	30°00'00"	25.00'	N85°08'58"W 35.36'
248	249	103.00'	18.03'	30°00'00"	25.00'	S29°08'45"E 35.36'
249	250	103.00'	18.03'	30°00'00"	25.00'	S60°51'15"W 35.36'
250	251	103.00'	18.03'	30°00'00"	25.00'	S16°21'20"W 17.45'
251	252	103.00'	18.03'	30°00'00"	25.00'	S25°32'38"E 39.71'
252	253	103.00'	18.03'	30°00'00"	25.00'	S16°21'20"W 17.45'
253	254	103.00'	18.03'	30°00'00"	25.00'	S25°32'38"E 39.71'
254	255	103.00'	18.03'	30°00'00"	25.00'	S16°21'20"W 17.45'
255	256	103.00'	18.03'	30°00'00"	25.00'	S25°32'38"E 39.71'
256	257	103.00'	18.03'	30°00'00"	25.00'	S16°21'20"W 17.45'
257	258	103.00'	18.03'	30°00'00"	25.00'	S25°32'38"E 39.71'
258	259	103.00'	18.03'	30°00'00"	25.00'	S16°21'20"W 17.45'
259	260	103.00'	18.03'	30°00'00"	25.00'	S25°32'38"E 39.71'
260	261	103.00'	18.03'	30°00'00"	25.00'	S16°21'20"W 17.45'
261	262	103.00'	18.03'	30°00'00"	25.00'	S25°32'38"E 39.71'
262	263	103.00'	18.03'	30°00'00"	25.00'	S16°21'20"W 17.45'
263	264	103.00'	18.03'	30°00'00"	25.00'	S25°32'38"E 39.71'
264	265	103.00'	18.03'	30°00'00"	25.00'	S16°21'20"W 17.45'
265	266	103.00'	18.03'	30°00'00"	25.00'	S25°32'38"E 39.71'
266	267	103.00'	18.03'	30°00'00"	25.00'	S16°21'20"W 17.45'
267	268	103.00'	18.03'	30°00'00"	25.00'	S25°32'38"E 39.71'
268	269	103.00'	18.03'	30°00'00"	25.00'	S16°21'20"W 17.45'
269	270	103.00'	18.03'	30°00'00"	25.00'	S25°32'38"E 39.71'
270	271	103.00'	18.03'	30°00'00"	25.00'	S16°21'20"W 17.45'
271	272	103.00'	18.03'	30°00'00"	25.00'	S25°32'38"E 39.71'
272	273	103.00'	18.03'	30°00'00"	25.00'	S16°21'20"W 17.45'
273	274	103.00'	18.03'	30°00'00"	25.00'	S25°32'38"E 39.71'
274	275	103.00'	18.03'	30°00'00"	25.00'	S16°21'20"W 17.45'
275	276	103.00'	18.03'	30°00'00"	25.00'	S25°32'38"E 39.71'
276	277	103.00'	18.03'	30°00'00"	25.00'	S16°21'20"W 17.45'
277	278	103.00'	18.03'	30°00'00"	25.00'	S25°32'38"E 39.71'
278	279	103.00'	18.03'	30°00'00"	25.00'	S16°21'20"W 17.45'
279	280	103.00'	18.03'	30°00'00"	25.00'	S25°32'38"E 39.71'
280	281	103.00'	18.03'	30°00'00"	25.00'	S16°21'20"W 17.45'
281	282	103.00'	18.03'	30°00'00"	25.00'	S25°32'38"E 39.71'
282	283	103.00'	18.03'	30°00'00"	25.00'	S16°21'20"W 17.45'
283	284	103.00'	18.03'	30°00'00"	25.00'	S25°32'38"E 39.71'
284	285	103.00'	18.03'	30°00'00"	25.00'	S16°21'20"W 17.45'
285	286	103.00'	18.03'	30°00'00"	25.00'	S25°32'38"E 39.71'
286	287	103.00'	18.03'	30°00'00"	25.00'	S16°21'20"W 17.45'
287	288	103.00'	18.03'	30°00'00"	25.00'	S25°32'38"E 39.71'
288	289	103.00'	18.03'	30°00'00"	25.00'	S16°21'20"W 17.45'
289	290	103.00'	18.03'	30°00'00"	25.00'	S25°32'38"E 39.71'

APPROVED: PUBLIC WATER AND PUBLIC SEWER HOWARD CO., MD.

BY: Joseph M. Broyles 11-17-76  
COUNTY HEALTH OFFICER DATE

APPROVED: HOWARD COUNTY OFFICE OF PLANNING AND ZONING  
BY: Thomas L. Harris 11-24-76  
DIRECTOR DATE

APPROVED: PUBLIC WATER, PUBLIC SEWER & STORM DRAINAGE SYSTEM  
& PUBLIC ROADS, HOWARD COUNTY DEPT. OF PUBLIC WORKS

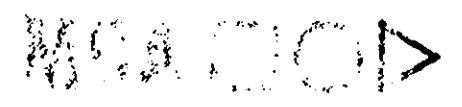
BY: P.J. Regan 11-15-76  
DIRECTOR DATE

PLAT ONE, SECTION 1, AREA 1  
Resubdivision of Winfield Sect. A  
Plat Book 4 Folio 65

**GLENMONT**

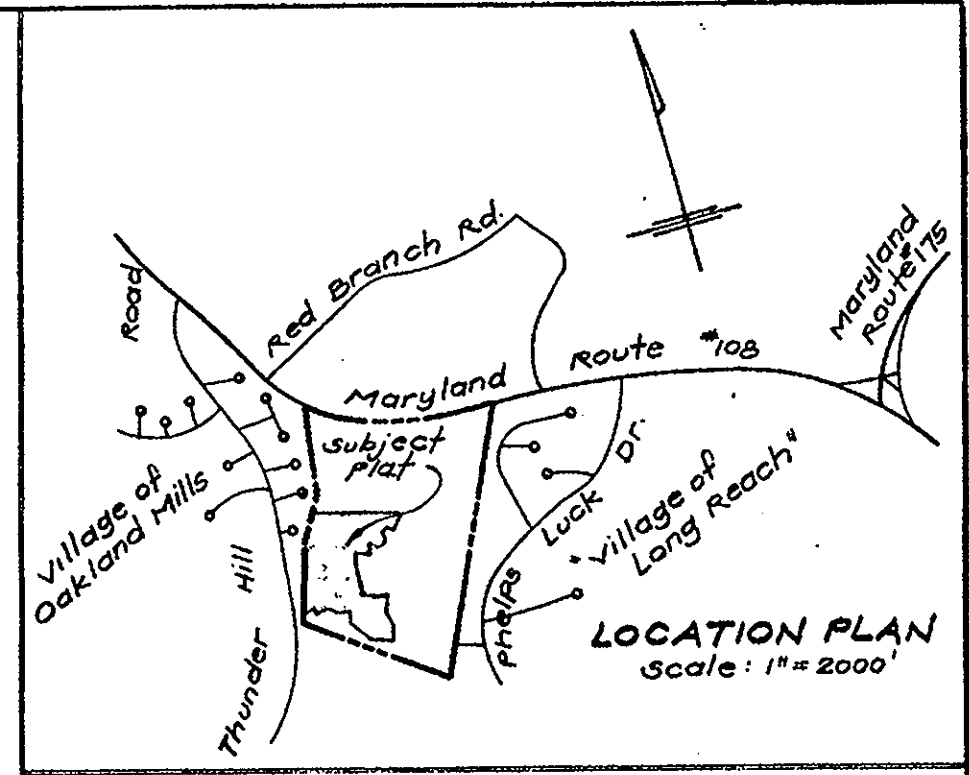
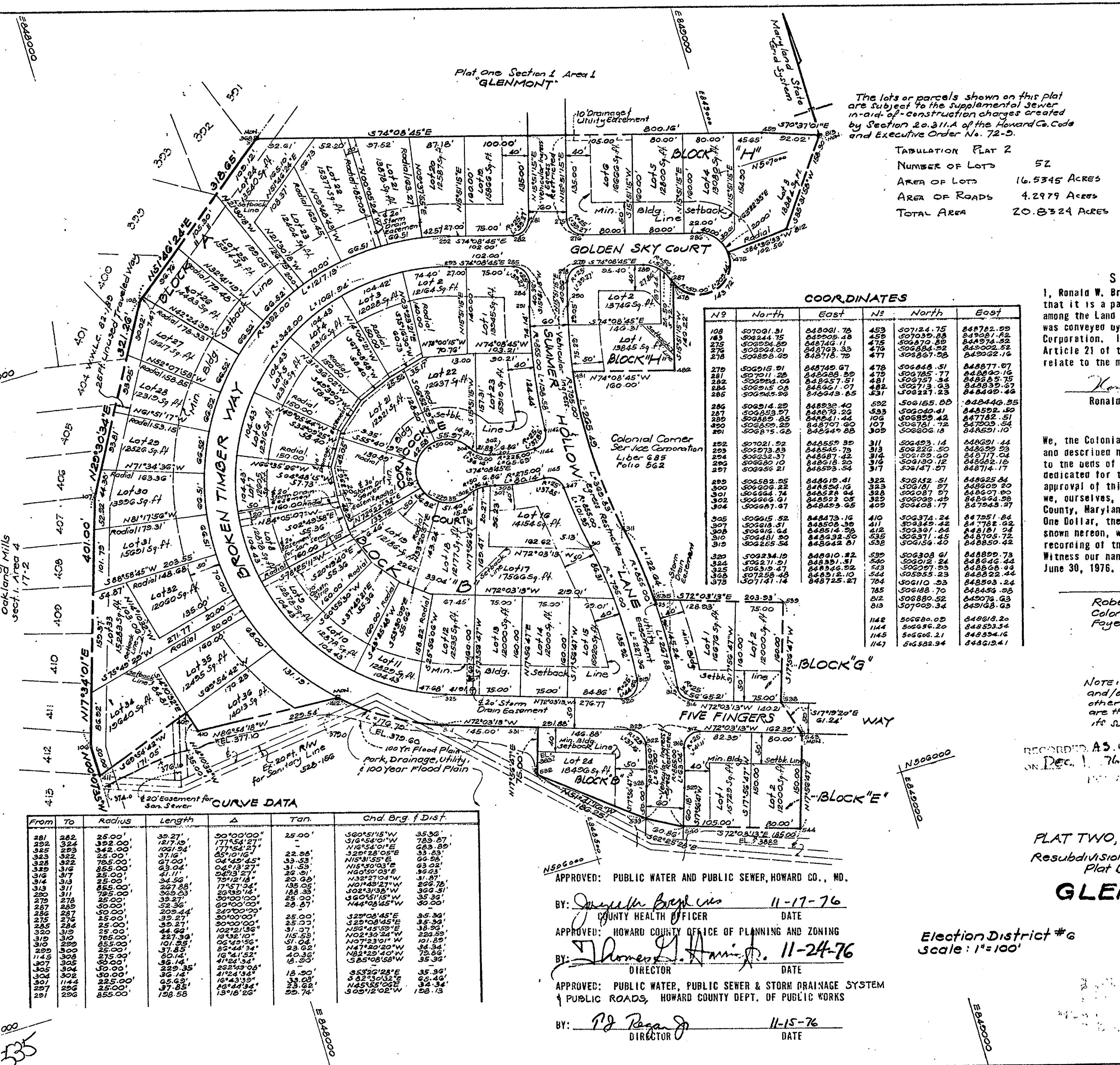
Election District #6  
Scale: 1" = 100'

Howard County, Maryland  
Aug. 1976



SHEET 1 of 2

F-77-05



**SURVEYOR'S CERTIFICATE**

I, Ronald W. Broyles, hereby certify that the Plan shown hereon is correct, that it is a part of the land which by Deed dated June 7, 1974 and recorded among the Land Records of Howard County, Maryland in Liber 685 Folio 562 was conveyed by H. A. Duncan & B.A. O'Neill to Colonial Corner Service Corporation. I further certify that the requirements of Section 3-108, Article 21 of the Annotated Code of Maryland (As Amended) as far as they relate to the making of this plat have been complied with.

*Ronald W. Broyles*  
Ronald W. Broyles, Reg. #3989 Date

**OWNER'S CERTIFICATE**

We, the Colonial Corner Service Corporation, owners of the property shown and described hereon adopt this plan of subdivision and the fee simple title to the beds of the streets and/or roads shown hereon, including the land dedicated for the widening of Md. Route 108; and in consideration of the approval of this plat, by the Howard County Office of Planning and Zoning, we, ourselves, our heirs, or assigns, do hereby give and grant unto Howard County, Maryland, the right and option to acquire for the consideration of One Dollar, the fee simple title to the beds of the streets and/or roads shown hereon, within the period of five years from the date of the recording of this plat among the Land Records of Howard County.

Witness our hands and seals, this day of June 30, 1976.

*Robert E. Hecht, Sr.*  
Robert E. Hecht, Sr., President  
Colonial Corner Service Corporation  
Fayette & St. Paul Sts., Balto, Md. 21202 Date

NOTE: Maintenance of all storm drains and/or drainage easements shown hereon, other than storm drain in road rights of way, are the responsibility of the property owner, its successors and assigns.

RECORDED AS PLAT #3573  
ON Dec. 1, 1976

PLAT TWO, SECTION 1, AREA 1  
Resubdivision of Winfield Sect. A.  
Plat Book 4 Folio 65

**GLENMONT**

Election District #6  
Scale: 1"=100'  
Howard County, Maryland  
Aug. 1976

APPROVED: PUBLIC WATER AND PUBLIC SEWER, HOWARD CO., MD.

BY: *Joyce M. Breyfus* 11-17-76  
COUNTY HEALTH OFFICER DATE

APPROVED: HOWARD COUNTY OFFICE OF PLANNING AND ZONING

BY: *Thomas L. Harris* 11-24-76  
DIRECTOR DATE

APPROVED: PUBLIC WATER, PUBLIC SEWER & STORM DRAINAGE SYSTEM & PUBLIC ROADS, HOWARD COUNTY DEPT. OF PUBLIC WORKS

BY: *PJ Rezard* 11-15-76  
DIRECTOR DATE

SHEET 2 of 2

F-77-05