

COLUMBIA

OPEN SPACE LOT 6
 ALL COORDINATES ARE BASED ON THE MARYLAND STATE GRID SYSTEM (Plat Book 21 Folio 23)

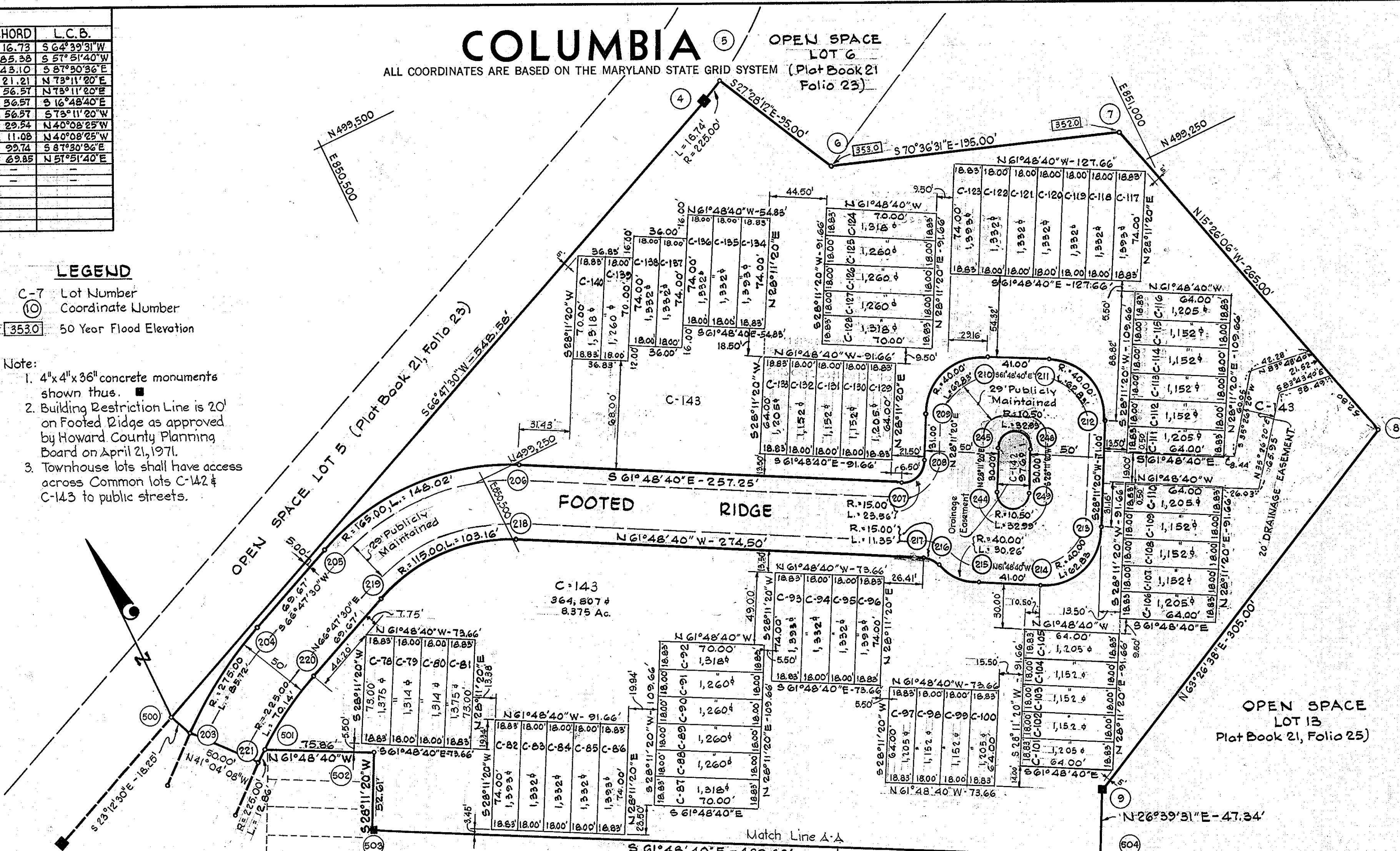
NOS.	RADIUS	Δ	ARC	TAN	CHORD	L.C.B.
4 - 5	225.00	04°15'43"	16.74	8.37	16.73	S 64°39'31"W
204 - 203	275.00	17°51'36"	25.72	43.21	85.38	S 57°51'40"W
205 - 206	165.00	51°23'53"	148.02	79.41	143.10	S 87°30'36"E
207 - 208	15.00	90°00'00"	23.56	15.00	21.21	N 73°11'20"E
209 - 210	40.00	90°00'00"	62.83	40.00	56.57	N 73°11'20"E
211 - 212	40.00	90°00'00"	62.83	40.00	56.57	S 16°48'40"E
213 - 214	40.00	90°00'00"	62.83	40.00	56.57	S 73°11'20"W
215 - 216	40.00	43°20'30"	30.26	15.89	29.54	N 40°08'25"W
216 - 217	15.00	43°20'30"	11.35	5.96	11.08	N 40°08'25"W
219 - 218	115.00	51°23'53"	103.16	53.34	92.74	S 87°30'36"E
221 - 220	225.00	17°51'36"	70.14	35.36	69.85	N 57°51'40"E
245 - 244	10.50	180°00'00"	32.99	-	-	-
249 - 244	10.50	180°00'00"	32.99	-	-	-

NO.	NORTH	EAST
4	499 416.05	850 745.70
5	499 423.21	850 760.83
6	499 338.92	850 804.65
7	499 274.18	850 988.59
8	499 018.73	851 059.12
9	498 882.37	850 786.29
205	499 183.09	850 248.71
204	499 228.51	850 321.00
205	499 255.96	850 385.04
206	499 249.75	850 528.01
207	499 128.23	850 754.75
208	499 134.36	850 775.05
209	499 161.69	850 789.70
210	499 178.05	850 843.85
211	499 158.68	850 879.98
212	499 104.53	850 896.34
213	499 041.95	850 862.81
214	499 025.59	850 808.65
215	499 044.96	850 772.52
216	499 067.34	850 735.47
217	499 076.01	850 746.33
218	499 205.68	850 504.39
219	499 210.01	850 404.74
220	499 182.55	850 340.71
221	499 145.39	850 281.56
244	499 093.56	850 809.91
245	499 120.00	850 824.08
248	499 110.08	850 842.59
249	499 083.64	850 828.42
500	499 199.86	850 241.52
501	499 153.66	850 291.49
502	499 117.72	850 358.36
503	499 071.36	850 333.51
504	498 840.07	850 765.06

LEGEND

- C-7 Lot Number
- ⑩ Coordinate Number
- 353.0 50 Year Flood Elevation

- Note:
- 4"x4"x36" concrete monuments shown thus. ■
 - Building Restriction Line is 20' on Footed Ridge as approved by Howard County Planning Board on April 21, 1971.
 - Townhouse lots shall have access across Common lots C-142 & C-143 to public streets.



SHEET 1 AND 2 TABULATION

TOTALS	ACREAGE	TOTALS	ACREAGE
All lots	= 5.103	All lots	= 10.634
R.O.W.	= 0.994	R.O.W.	= 2.489
Total	= 6.097	Total	= 13.123
Lots this plat	= 65	Total Lots	= 145

APPROVED: FOR PUBLIC WATER AND PUBLIC SEWERAGE SYSTEMS, HOWARD COUNTY HEALTH DEPARTMENT.

Shepherd July 20, 1971
 COUNTY HEALTH OFFICER DATE

APPROVED: HOWARD COUNTY OFFICE OF PLANNING AND ZONING.

Thomas L. Harris 7-20-71
 DIRECTOR DATE

APPROVED: FOR PUBLIC WATER AND PUBLIC SEWERAGE, STORM DRAINAGE SYSTEMS AND PUBLIC ROADS. HOWARD COUNTY DEPARTMENT OF PUBLIC WORKS.

William D. Altman 7/16/71
 DIRECTOR DATE

SURVEYOR'S, ENGINEER'S and OWNER'S CERTIFICATES

The undersigned, owner of the property shown on this Plat, grants unto, (1) Howard County, Maryland, its successors and assigns, the right to lay, construct and maintain water and sewer mains and laterals therefor in and under all road and street rights-of-way as shown hereon; (2) further it adopts this plan of subdivision and reserves the fee simple title to the beds of the streets and/or roads hereon, except however, for one dollar consideration, it herewith grants the right and option to Howard County, Maryland to acquire (within a period of five years commencing with the date of recording of this plat among the Land Records of Howard County) the fee simple title to the beds of the streets and/or roads shown hereon, together with such adjacent land, if any, as may be shown on this plat as areas designated for the installation of street lighting facilities, reserving, however, unto Grantor, its successors and assigns the right in perpetuity to lay, construct, enlarge, maintain and use cables and/or conduits for electrical transmission and other purposes beneath the surface of the lands subject to the rights granted herein to said Howard County. The undersigned certifies that the subdivision plan shown hereon is correct as complying with the requirements of Final Development Plan Phase 89 recorded in Plat Book 20 Folios 31 to 31, each inclusive, with all Open Space shown thereon to be used for drainage easements, if necessary, and the requirements of Article 17, Section 60 of the annotated code of Maryland concerning the making of this Plat and setting of markers have been complied with. The land shown hereon is a part of the land which by deed dated February 2, 1971 and recorded among the Land Records of Howard County, Maryland in Liber 550 Folio 363 was granted and conveyed by the Howard Research and Development Corporation to Howard Homes, Inc.

PROFESSIONAL LAND SURVEYOR
 (By) *Kenneth P. Milod* 1974
 Whitman, Requardt & Associates
 2 W. Preston St., Baltimore, Md., 21201

PROFESSIONAL ENGINEER
 (By) *Kenneth P. Milod* 1974
 Whitman, Requardt & Associates
 2 W. Preston St., Baltimore, Md., 21201

OWNER
 (By) *Howard Homes, Inc.*
 Howard Homes, Inc.
 Columbia, Md. 21043 P.O. Box 802

The undersigned, owner of the property shown on this plat, grants unto Howard County, Maryland, its successors and assigns, the right to lay, construct and maintain sewers, drains, water pipes and other municipal utilities and services, in and through the specific easement area shown hereon, to the end that the specific lots shall be there by burdened with the right of way shown hereon.

By *Howard Homes, Inc.*
 Howard Homes, Inc.

RECORDED IN PLAT BOOK 22 FOLIO 9
 on 7/23, 1971 among The
 Land Records of Howard County, Maryland.

COLUMBIA
 VILLAGE OF LONGREACH
 LOTS C-1 to C-143
 A RESUBDIVISION OF PARCEL "C"
 SECTION 1
 AREA 2
 Sheet 1 of 2
 6TH Election District of Howard County, Md.
 Scale: 1" = 50' Date: May 26, 1971

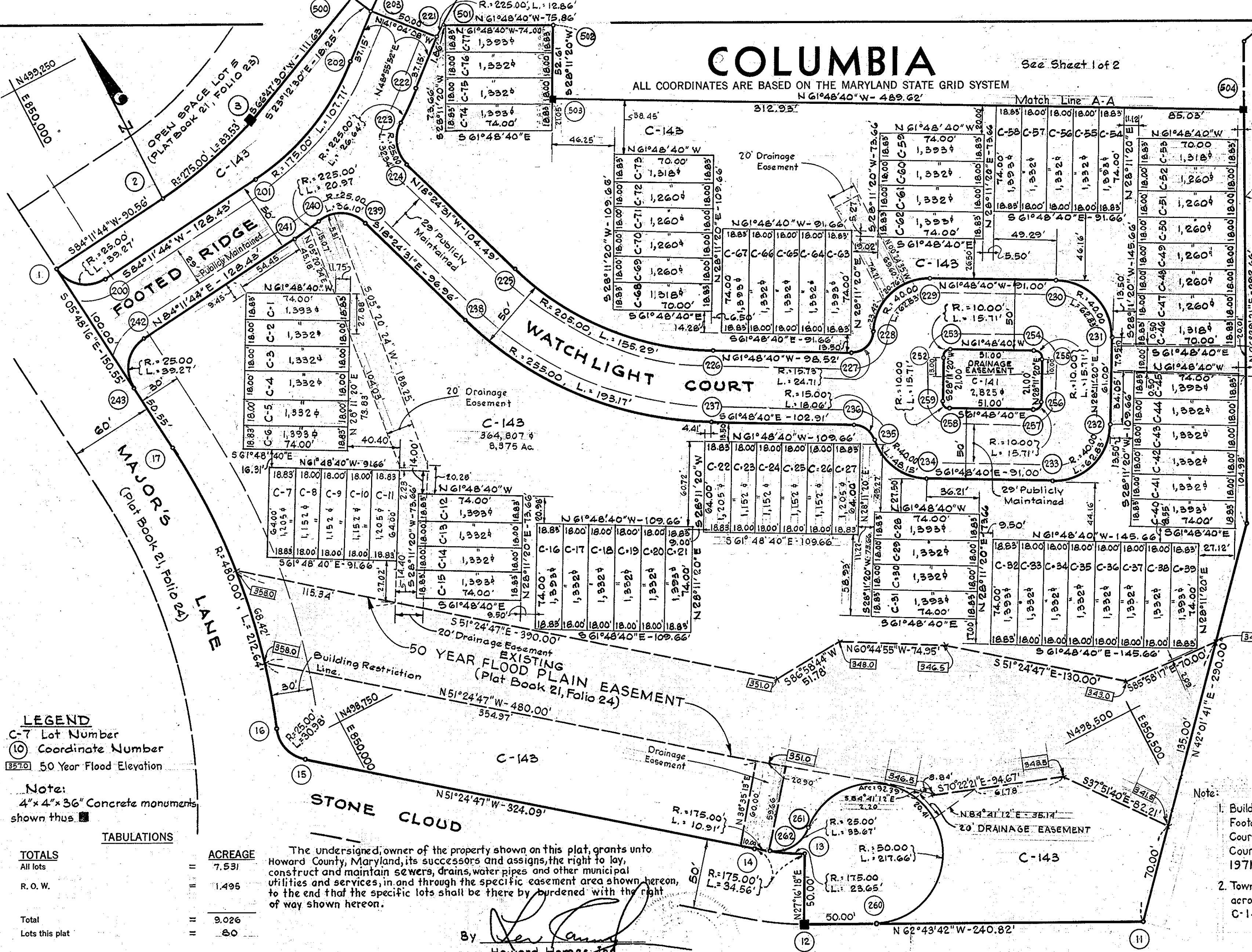
COLUMBIA

ALL COORDINATES ARE BASED ON THE MARYLAND STATE GRID SYSTEM
N 61°48'40"W - 489.62'

See Sheet 1 of 2

CURVE DATA						
NOS.	RADIUS	Δ	ARC	TAN	CHORD	L.C.B.
2-3	275.00	17°24'14"	83.53	42.09	83.21	S75°29'36"W
200-1	25.00	90°00'00"	39.27	25.00	35.36	N50°48'16"W
202-201	175.00	35°15'53"	55.62	106.02	106.02	S66°33'48"W
223-222	225.00	06°47'00"	26.64	13.34	26.62	N52°19'22"E
224-223	225.00	74°07'23"	32.84	18.88	30.13	N18°39'10"E
226-225	205.00	43°24'09"	155.29	81.58	151.60	N40°06'36"W
228-227	1575	90°00'00"	24.71	15.75	22.25	S78°11'20"W
229-228	40.00	90°00'00"	62.83	40.00	56.57	S73°11'20"W
231-230	40.00	90°00'00"	62.83	40.00	56.57	N16°48'40"W
233-232	40.00	90°00'00"	62.83	40.00	56.57	N73°11'20"E
235-234	40.00	68°58'29"	48.15	27.48	45.30	S27°19'26"E
236-235	15.00	68°58'29"	19.06	10.30	16.99	S27°19'26"E
238-237	255.00	43°24'09"	193.17	101.48	188.58	S40°06'36"E
240-239	25.00	83°44'12"	36.10	22.02	33.05	S59°46'37"E
241-240	225.00	05°20'27"	20.97	10.49	20.97	N81°31'30"E
243-242	25.00	90°00'00"	39.27	25.00	35.36	N39°11'38"E
253-252	10.00	90°00'00"	15.71	10.00	14.14	S73°11'20"W
255-254	10.00	90°00'00"	15.71	10.00	14.14	N16°48'40"W
257-256	10.00	90°00'00"	15.71	10.00	14.14	N73°11'20"E
259-258	10.00	90°00'00"	15.71	10.00	14.14	S16°48'40"E
13-14	175.00	11°18'58"	34.56	17.34	34.51	S57°03'55"E
15-16	25.00	70°39'34"	30.98	17.82	29.03	N15°44'46"W
16-17	480.00	25°22'58"	212.55	108.10	210.91	N65°53'12"W
260-261	50.00	249°24'57"	21.66			
261-262	25.00	77°09'26"	33.67	19.94	31.16	S66°28'08"W
262-14	175.00	3°24'19"	10.91	5.46	10.91	S57°03'55"E
221-501	225.00	3°16'32"	12.86	6.43	12.86	N50°34'08"E

COORDINATE SCHEDULE		
NO.	NORTH	EAST
1	499125.87	849268.26
2	499135.09	850058.36
3	499155.87	850138.92
260	498450.54	850269.98
10	498578.52	850633.75
11	498363.10	850439.59
12	498473.45	850225.54
13	498517.89	850248.45
14	498536.65	850219.49
15	498738.78	849966.16
16	498766.70	849958.20
17	498976.09	849983.49
200	499103.53	849995.66
201	499116.52	850123.43
202	499158.68	850220.71
222	499120.99	850235.59
223	499104.71	850232.48
224	499076.16	850222.84
225	499077.02	850255.84
226	498861.08	850553.51
227	498814.54	850440.24
228	498820.97	850461.64
229	498837.33	850515.79
230	498794.35	850596.00
231	498740.20	850612.36
232	498686.43	850583.55
233	498670.07	850529.39
234	498713.06	850449.19
235	498753.90	850428.40
236	498768.39	850420.60
237	498817.01	850329.89
238	498961.23	850208.40
239	499053.23	850177.78
240	499062.86	850149.23
241	499066.77	850128.49
242	499053.78	850000.72
243	499026.38	849978.38
252	498779.73	850496.26
253	498783.82	850509.80
254	498769.73	850554.75
255	498746.19	850558.84
256	498727.68	850548.92
257	498723.59	850535.39
258	498747.68	850490.43
259	498761.22	850486.34
203	499183.09	850248.71
221	499145.39	850291.56
500	499199.86	850241.52
501	499153.56	850291.49
502	499117.72	850355.36
503	499071.36	850393.51
504	498840.07	850765.08
261	498532.05	850259.34
262	498530.12	850258.22



LEGEND
 C-7 Lot Number
 (10) Coordinate Number
 [550] 50 Year Flood Elevation

Note:
 4" x 4" x 36" Concrete monuments shown thus [square symbol]

TABULATIONS

TOTALS	ACREAGE
All lots	7.531
R.O.W.	1.495
Total	9.026
Lots this plat	80

The undersigned, owner of the property shown on this plat, grants unto Howard County, Maryland, its successors and assigns, the right to lay, construct and maintain sewers, drains, water pipes and other municipal utilities and services, in and through the specific easement area shown hereon, to the end that the specific lots shall be there by burdened with the right of way shown hereon.

By *[Signature]*
 Howard Homes, Inc.

Note:
 1. Building Restriction Line is 20' on Footed Ridge and Watchlight Court as approved by Howard County Planning Board on April 21, 1971.
 2. Townhouse lots shall have access across common lots C-141 & C-143 to public streets.

APPROVED: FOR PUBLIC WATER AND PUBLIC SEWERAGE SYSTEMS, HOWARD COUNTY HEALTH DEPARTMENT.
[Signature] July 20 1971
 COUNTY HEALTH OFFICER DATE

APPROVED: HOWARD COUNTY OFFICE OF PLANNING AND ZONING.
[Signature] 7-20-71
 DIRECTOR DATE

APPROVED: FOR PUBLIC WATER AND PUBLIC SEWERAGE, STORM DRAINAGE SYSTEMS AND PUBLIC ROADS, HOWARD COUNTY DEPARTMENT OF PUBLIC WORKS.
[Signature] 7/16/71
 DIRECTOR DATE

SURVEYOR'S, ENGINEER'S and OWNER'S CERTIFICATES

The undersigned, owner of the property shown on this Plat, grants unto, (1) Howard County, Maryland, its successors and assigns, the right to lay, construct and maintain water and sewer mains and laterals therefor in and under all road and street rights-of-way as shown hereon; (2) further it adopts this plan of subdivision and reserves the fee simple title to the beds of the streets and/or roads hereon, except however, for one dollar consideration, it herewith grants the right and option to Howard County, Maryland to acquire (within a period of five years commencing with the date of recording of this plat among the Land Records of Howard County) the fee simple title to the beds of the streets and/or roads shown hereon, together with such adjacent land, if any, as may be shown on this plat as areas designated for the installation of street lighting facilities, reserving, however, unto Grantor, its successors and assigns the right in perpetuity to lay, construct, enlarge, maintain and use cables and/or conduits for electrical transmission and other purposes beneath the surface of the lands subject to the rights granted herein to said Howard County. The undersigned certifies that the subdivision plan shown hereon is correct as complying with the requirements of Final Development Plan Phase 89 recorded in Plat Book 20 Folios 21 to 31, each inclusive, with all Open Space shown thereon to be used for drainage easements, if necessary, and the requirements of Article 17, Section 60 of the annotated code of Maryland concerning the making of this Plat and setting of markers have been complied with. The land shown hereon is a part of the land which by deed dated February 2, 1971 and recorded among the Land Records of Howard County, Maryland in Liber 550 Folio 363 was granted and conveyed by the Howard Research and Development Corporation to Howard Homes, Inc.

PROFESSIONAL LAND SURVEYOR (By) *[Signature]* 1974
 Whitman, Reardon & Associates
 2 W. Preston St., Baltimore, Md. 21201

PROFESSIONAL ENGINEER (By) *[Signature]* 1974
 Whitman, Reardon & Associates
 2 W. Preston St., Baltimore, Md. 21201

OWNER (By) *[Signature]*
 Howard Homes, Inc.
 Columbia, Md. 21048 P.O. Box 802
 Auth. Agent

RECORDED IN PLAT BOOK 22 FOLIO 10
 on 7/23, 1971 among The
 Land Records of Howard County, Maryland.

COLUMBIA
VILLAGE OF LONGREACH
 LOTS C-1 to C-143
 A RESUBDIVISION OF PARCEL "C"
 SECTION 1

AREA 2
 Sheet 2 of 2
 6TH Election District of Howard County, Md.
 Scale: 1" = 50' Date: May 26, 1971