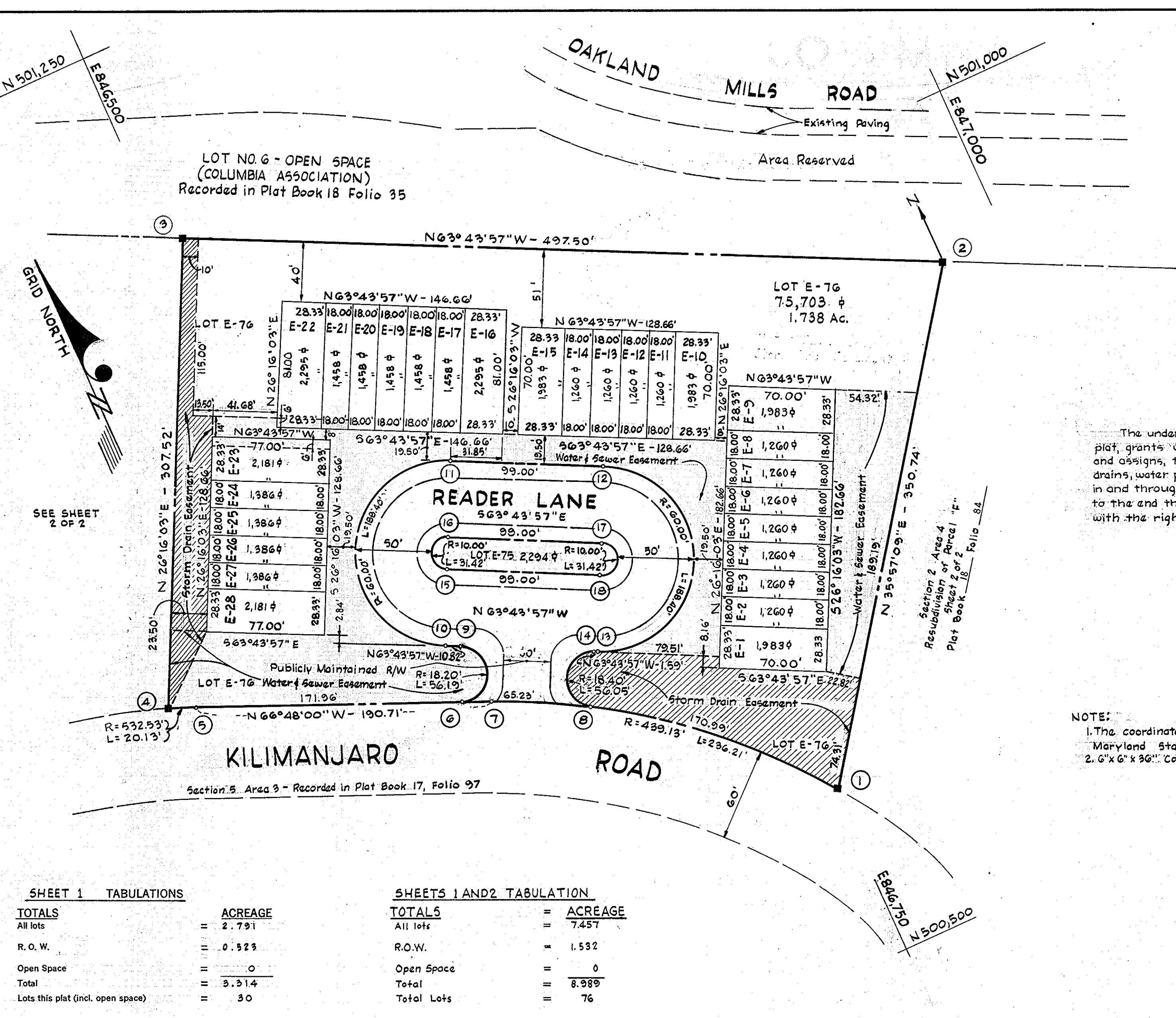


CURVE DATA						
NO.	RADIUS	Δ	ARC	TAN.	CHORD	L. C. B.
1-7	439.13'	30°49'11"	236.21'	121.04'	233.37'	S51°18'25"E
6-9	18.20'	176°55'58"	56.19'	679.60'	36.38'	N24°44'02"E
10-11	60.00'	180°00'00"	188.50'		120.00'	N26°16'03"E
12-13	60.00'	180°00'00"	188.50'		120.00'	S26°16'03"W
14-8	18.40'	174°33'26"	56.05'	987.04'	36.75'	S28°59'20"W
15-16	10.00'	180°00'00"	31.42'		20.00'	N26°16'03"E
17-18	10.00'	180°00'00"	31.42'		20.00'	S26°16'03"W
1-8	439.13'	22°18'35"	170.99'	430.86'	109.91'	N47°08'06"W
8-7	439.13'	8°30'37"	65.23'	32.67'	65.17'	N62°32'42"W
4-5	532.53'	2°09'56"	20.13'	10.07'	20.13'	S67°52'58"E



The undersigned, owner of the property shown on this plat, grants unto Howard County, Maryland, its successors and assigns, the right to lay, construct and maintain sewers, drains, water pipes and other municipal utilities and services, in and through the specific easement area shown hereon, to the end that the specific lots shall be thereby burdened with the right of way shown hereon.

By *[Signature]*  
Howard Homes, Inc.

COORDINATE SCHEDULE		
NO.	NORTH	EAST
1	500613.05	846752.42
2	500897.58	846958.34
3	501117.75	846512.22
4	500841.99	846376.13
5	500834.41	846394.78
6	500766.67	846552.83
7	500759.28	846370.06
8	500729.24	846627.89
9	500739.71	846568.05
10	500804.49	846558.35
11	500912.10	846611.45
12	500868.29	846700.23
13	500760.68	846647.12
14	500761.38	846645.70
15	500849.33	846580.48
16	500867.26	846583.33
17	500823.45	846678.10
18	500805.52	846669.25

NOTE:  
1. The coordinates shown hereon are based on the Maryland State Grid System.  
2. 6"x6"x36" Conc. Mon. indicated thus ■.

SHEET 1 TABULATIONS

TOTALS	ACREAGE
All lots	= 2.791
R.O.W.	= 0.523
Open Space	= 0
Total	= 3.314
Lots this plat (incl. open space)	= 30

SHEETS 1 AND 2 TABULATION

TOTALS	ACREAGE
All lots	= 7.457
R.O.W.	= 1.532
Open Space	= 0
Total	= 8.989
Total Lots	= 76

LEGEND

- E-3 Lot Number
- ⑤ Coordinate Number
- 10-11 Curve Number
- Water & Sewer Easement
- Storm Drain Easement

APPROVED: FOR PUBLIC WATER AND PUBLIC SEWERAGE SYSTEMS, HOWARD COUNTY HEALTH DEPARTMENT.  
*[Signature]* Oct 19 1970  
COUNTY HEALTH OFFICER DATE

APPROVED: HOWARD COUNTY OFFICE OF PLANNING AND ZONING.  
*[Signature]* 10-20-70  
DIRECTOR DATE

APPROVED: FOR PUBLIC WATER AND PUBLIC SEWERAGE, STORM DRAINAGE SYSTEMS AND PUBLIC ROADS. HOWARD COUNTY DEPARTMENT OF PUBLIC WORKS.  
*[Signature]* 10-17-70  
DIRECTOR DATE

SURVEYOR'S, ENGINEER'S and OWNER'S CERTIFICATES

The undersigned, owner of the property shown on this Plat, grants unto, (1) Howard County, Maryland, its successors and assigns, the right to lay, construct and maintain water and sewer mains and laterals therefor in and under all road and street rights-of-way as shown hereon; (2) further it adopts this plan of subdivision and reserves the fee simple title to the beds of the streets and/or roads hereon, except however, for one dollar consideration, it herewith grants the right and option to Howard County, Maryland to acquire (within a period of five years commencing with the date of recording of this plat among the Land Records of Howard County) the fee simple title to the beds of the streets and/or roads shown hereon, together with such adjacent land, if any, as may be shown on this plat as areas designated for the installation of street lighting facilities, reserving, however, unto Grantor, its successors and assigns the right in perpetuity to lay, construct, enlarge, maintain and use cables and/or conduits for electrical transmission and other purposes beneath the surface of the lands subject to the rights granted herein to said Howard County. The undersigned certify that the subdivision plan shown hereon is correct as complying with the requirements of Final Development Plan Phase 80-A recorded in Plat Book 19, Folios 93 to 98, each inclusive, with all Open Space shown thereon to be used for drainage easements, if necessary, and the requirements of Article 17, Section 60 of the annotated code of Maryland concerning the making of this Plat and setting of markers have been complied with. The land shown hereon is a part of the land which by deed dated December 13, 1966 and recorded among the Land Records of Howard County, Maryland in Liber 532 Folio 114, was granted and conveyed by the Howard Research and Development Corporation to Howard Homes, Inc.

PROFESSIONAL LAND SURVEYOR (By) *[Signature]* 1974  
Whitman, Requardt & Assoc. Reg. No. 21201  
2 W. Preston St. Baltimore, Md. 21201

PROFESSIONAL ENGINEER (By) *[Signature]* 1974  
Whitman, Requardt & Assoc. Reg. No. 21201  
2 W. Preston St. Baltimore, Md. 21201

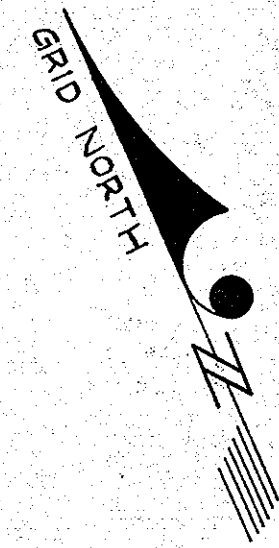
OWNER (By) *[Signature]*  
Howard Homes, Inc. (President)  
P.O. Box 802, Columbia, Md. 21043

RECORDED IN PLAT BOOK 21 FOLIO 4  
on OCT 20, 1970 among The  
Land Records of Howard County, Maryland.

COLUMBIA  
VILLAGE OF OAKLAND MILLS  
SECTION 2 AREA 4  
LOTS E-1 to E-76  
A RESUBDIVISION OF PARCEL "E"

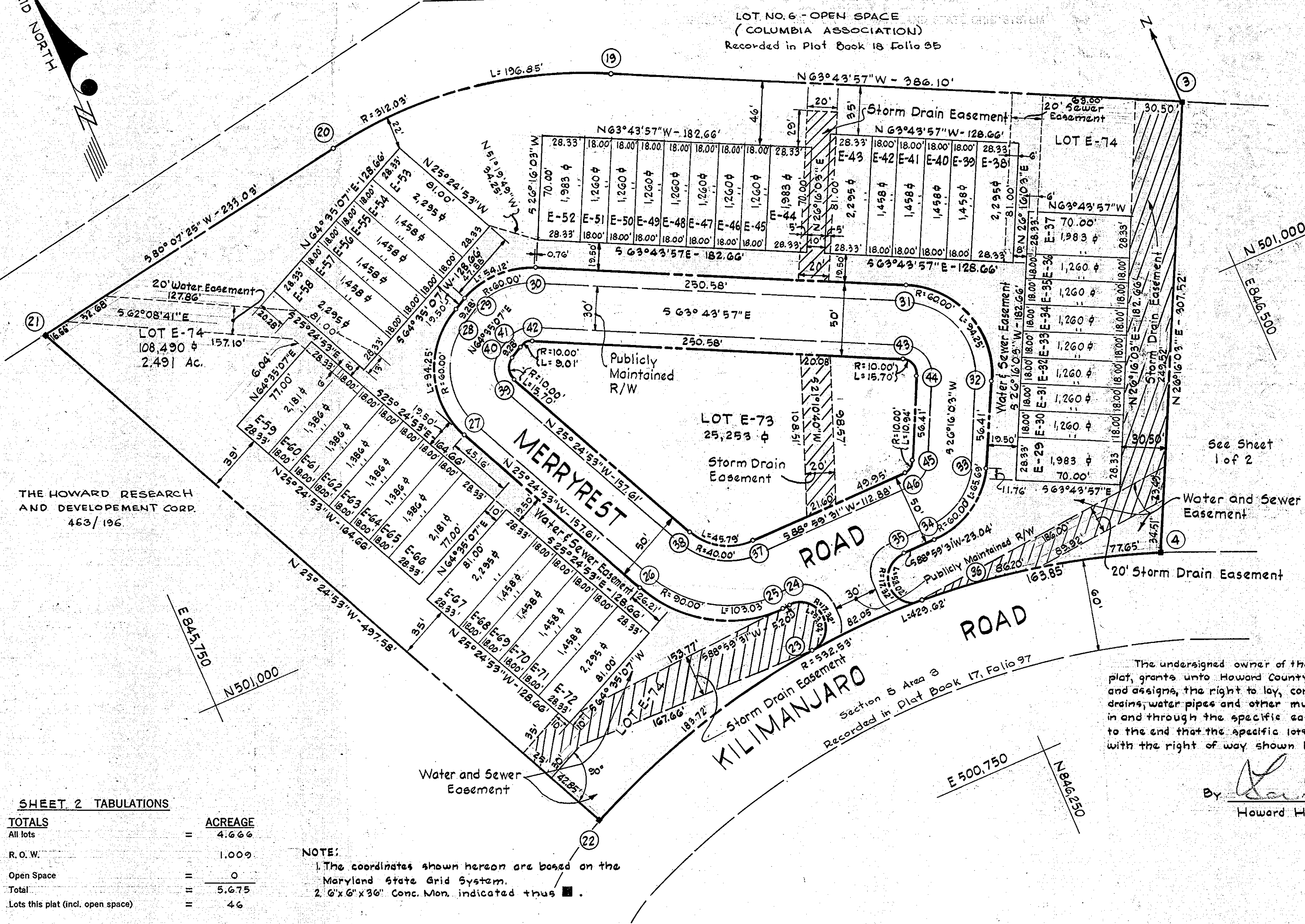
Sheet 1 of 2  
6TH Election District of Howard County, Md.  
Scale: 1" = 50' Date: August 13, 1970





CURVE DATA					
NOS.	RADIUS	Δ	ARC	TAN. CHORD	L. C. B.
19-20	312.03'	36°08'43"	196.85'	101.82'	193.60'
22-4	532.53'	46°13'24"	420.62'	227.27'	418.06'
22-23	532.53'	19°45'12"	183.60'	92.72'	182.69'
23-36	532.53'	8°51'15"	82.29'	41.23'	82.21'
36-4	532.53'	17°36'58"	103.78'	52.52'	103.09'
38-24	17.32'	175°25'41"	53.02'	433.77'	34.60'
25-26	90.00'	65°35'26"	103.03'	57.99'	97.50'
27-28	60.00'	90°00'00"	94.24'	60.00'	84.85'
29-30	60.00'	51°40'42"	54.12'	29.06'	52.30'
31-32	60.00'	90°00'00"	94.24'	60.00'	84.85'
33-34	60.00'	62°42'22"	65.68'	36.57'	62.45'
35-36	17.32'	175°25'41"	53.02'	433.77'	34.60'
37-38	40.00'	65°35'31"	45.79'	25.77'	43.33'
39-40	10.00'	90°00'00"	15.70'	10.00'	14.14'
41-42	10.00'	90°00'00"	9.01'	10.00'	8.71'
43-44	10.00'	90°00'00"	15.70'	10.00'	14.14'
45-46	10.00'	62°42'22"	10.94'	6.09'	10.41'

COORDINATE SCHEDULE		
NO.	NORTH	EAST
3	50117.76	84651.222
4	50084.199	84637.613
19	50128.633	84616.999
20	50131.623	84597.437
21	50127.626	84574.79
22	50092.623	84558.34
23	50087.509	84613.67
24	50090.964	84613.73
25	50090.955	84612.752
26	50090.969	84604.65
27	50110.327	84597.701
28	50118.321	84600.545
29	50118.720	84601.334
30	50118.681	84606.614
31	50107.531	84620.84
32	50099.555	84631.809
33	50094.497	84629.13
34	50091.154	84624.038
35	50091.113	84621.734
36	50087.653	84621.662
37	50095.54	84612.664
38	50098.237	84608.81
39	50112.473	84602.217
40	50113.805	84602.691
41	50114.208	84603.30
42	50114.197	84604.401
43	50103.107	84626.72
44	50101.708	84627.26
45	50096.710	84624.829
46	50096.153	84623.950



THE HOWARD RESEARCH AND DEVELOPMENT CORP.  
463/196

**SHEET 2 TABULATIONS**

TOTALS	ACREAGE
All lots	4.666
R.O.W.	1.000
Open Space	0
Total	5.675
Lots this plat (incl. open space)	46

**NOTE:**  
1. The coordinates shown hereon are based on the Maryland State Grid System.  
2. 6'x6'x36' Conc. Mon. indicated thus ■.

The undersigned owner of the property shown on this plat, grants unto Howard County, Maryland, its successors and assigns, the right to lay, construct and maintain sewers, drains, water pipes and other municipal utilities and services, in and through the specific easement area shown hereon, to the end that the specific lots shall be thereby burdened with the right of way shown hereon.

By *[Signature]*  
Howard Homes Inc.

**LEGEND**

E-3	Lot Number
5	Coordinate Number
10-11	Curve Number
	Water & Sewer Easement
	Storm Drain Easement

APPROVED: FOR PUBLIC WATER AND PUBLIC SEWERAGE SYSTEMS, HOWARD COUNTY HEALTH DEPARTMENT.  
*[Signature]* COUNTY HEALTH OFFICER  
DATE: 10-19-70

APPROVED: HOWARD COUNTY OFFICE OF PLANNING AND ZONING.  
*[Signature]* DIRECTOR  
DATE: 10-20-70

APPROVED: FOR PUBLIC WATER AND PUBLIC SEWERAGE, STORM DRAINAGE SYSTEMS AND PUBLIC ROADS. HOWARD COUNTY DEPARTMENT OF PUBLIC WORKS.  
*[Signature]* DIRECTOR  
DATE: 10-19-70

**SURVEYOR'S, ENGINEER'S and OWNER'S CERTIFICATES**

The undersigned, owner of the property shown on this Plat, grants unto, (1) Howard County, Maryland, its successors and assigns, the right to lay, construct and maintain water and sewer mains and laterals therefor in and under all road and street rights-of-way as shown hereon; (2) further it adopts this plan of subdivision and reserves the fee simple title to the beds of the streets and/or roads hereon, except however, for one dollar consideration, it herewith grants the right and option to Howard County, Maryland to acquire (within a period of five years commencing with the date of recording of this plat among the Land Records of Howard County) the fee simple title to the beds of the streets and/or roads shown hereon, together with such adjacent land, if any, as may be shown on this plat as areas designated for the installation of street lighting facilities, reserving, however, unto Grantor, its successors and assigns the right in perpetuity to lay, construct, enlarge, maintain and use cables and/or conduits for electrical transmission and other purposes beneath the surface of the lands subject to the rights granted herein to said Howard County. The undersigned certifies that the subdivision plan shown hereon is correct as complying with the requirements of Final Development Plan Phase 80-A recorded in Plat Book 19, Folios 23 to 28, each inclusive, with all Open Space shown thereon to be used for drainage easements, if necessary, and the requirements of Article 17, Section 60 of the annotated code of Maryland concerning the making of this Plat and setting of markers have been complied with. The land shown hereon is a part of the land which by deed dated December 13, 1966 and recorded among the Land Records of Howard County, Maryland in Liber 532 Folio 114, was granted and conveyed by the Howard Research and Development Corporation to Howard Homes, Inc.

PROFESSIONAL LAND SURVEYOR (By) *[Signature]* Whitman, Raquardt & Assoc. Reg. No. 21201  
PROFESSIONAL ENGINEER (By) *[Signature]* Whitman, Raquardt & Assoc. Reg. No. 21201  
OWNER (By) *[Signature]* Howard Homes, Inc. (President) Auth: Agent P.O. Box 802 Columbia, Md. 21043

RECORDED IN PLAT BOOK 21 FOLIO 5  
on Oct 20, 1970 among The  
Land Records of Howard County, Maryland.

**COLUMBIA**  
**VILLAGE OF OAKLAND MILLS**  
**SECTION 2 AREA 4**  
LOTS E-1 to E-76  
A RESUBDIVISION OF PARCEL "E"

Sheet 2 of 2  
6TH Election District of Howard County, Md.  
Scale: 1" = 50' Date: August 13, 1970