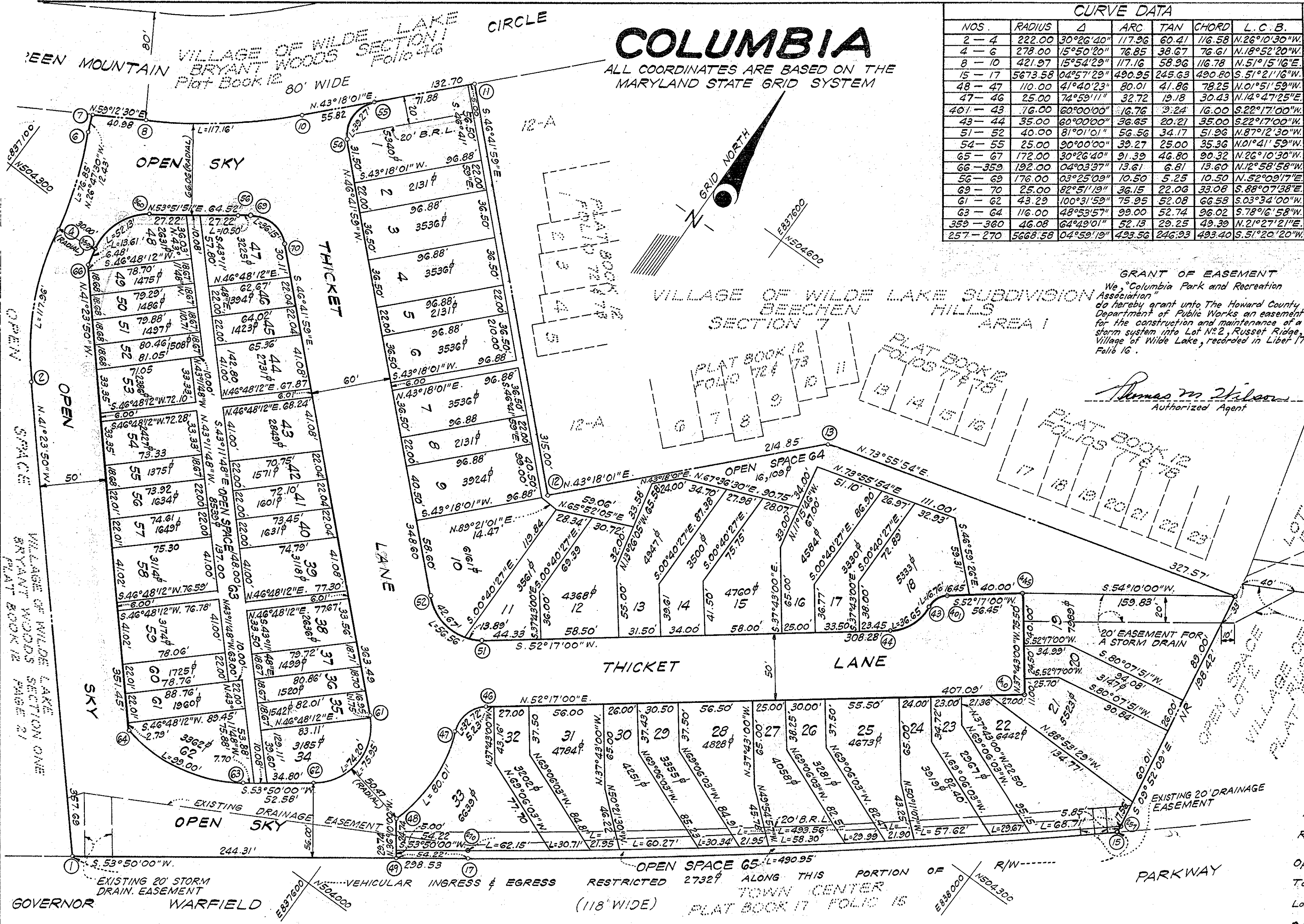


COLUMBIA

ALL COORDINATES ARE BASED ON THE MARYLAND STATE GRID SYSTEM

CURVE DATA						
NOS.	RADIUS	Δ	ARC	TAN	CHORD	L.C.B.
2-4	222.00	30°26'40"	117.96	60.41	116.58	N.26°10'30"W
4-6	278.00	15°50'20"	76.85	38.67	76.61	N.18°52'20"W
8-10	421.97	15°54'29"	117.16	58.96	116.78	N.51°15'16"E
15-17	5673.58	04°57'29"	490.95	245.63	490.80	S.51°21'16"W
48-47	110.00	41°40'23"	80.01	41.86	78.25	N.01°51'59"W
47-46	25.00	74°59'11"	32.72	19.18	30.43	N.14°47'25"E
401-43	16.00	60°00'00"	16.76	9.24	16.00	S.22°17'00"W
43-44	35.00	60°00'00"	36.65	20.21	35.00	S.22°17'00"W
51-52	40.00	81°01'01"	56.56	34.17	51.96	N.87°12'30"W
54-55	25.00	90°00'00"	39.27	25.00	35.36	N.01°41'59"W
65-67	172.00	30°26'40"	91.39	46.80	90.32	N.26°10'30"W
66-359	192.00	04°03'37"	13.61	6.81	13.60	N.12°58'58"W
56-69	176.00	03°25'09"	10.50	5.25	10.50	N.52°09'17"E
69-70	25.00	82°51'19"	36.15	22.06	33.08	S.88°07'38"E
61-62	43.29	100°31'59"	75.95	52.08	66.58	S.03°34'00"W
63-64	116.00	48°53'57"	99.00	52.74	96.02	S.78°16'58"W
359-360	46.08	64°49'01"	52.13	29.25	49.39	N.21°27'21"E
257-270	5668.58	04°59'19"	493.56	246.93	493.40	S.51°20'20"W

COORDINATES		
NO.	NORTH	EAST
1	503 910.59	837 444.78
2	504 178.91	837 208.25
4	504 283.53	837 156.82
6	504 356.02	837 132.04
7	504 367.12	837 126.44
8	504 388.10	837 161.64
10	504 461.18	837 252.73
11	504 557.76	837 343.74
12	504 341.73	837 572.98
13	504 498.09	837 720.33
14	504 588.75	838 035.10
15	504 393.27	838 069.11
17	504 086.76	837 685.78
43	504 445.84	837 854.80
44	504 413.45	837 841.52
46	504 186.42	837 629.68
47	504 156.99	837 621.91
48	504 078.78	837 624.46
49	504 054.77	837 642.01
51	504 224.86	837 597.66
52	504 227.39	837 545.76
54	504 466.47	837 292.06
55	504 501.81	837 291.01
56	504 373.25	837 256.45
61	504 129.32	837 562.34
62	504 062.87	837 558.20
63	504 031.84	837 515.76
64	504 012.34	837 421.74
66	504 275.98	837 189.33
69	504 379.69	837 264.74
70	504 378.61	837 297.80
257	504 399.03	838 068.11
359	504 289.23	837 186.28
360	504 335.20	837 204.34
401	504 460.65	837 860.86
410	504 435.46	837 951.71
445	504 495.18	837 905.52
270	504 090.80	837 682.83



GRANT OF EASEMENT
 We, Columbia Park and Recreation Association, hereby grant unto The Howard County Department of Public Works an easement for the construction and maintenance of a storm system, into Lot No. 2, Russet Ridge, Village of Wilde Lake, recorded in Liber 17 Folio 16.

Thomas M. Wilson
 Authorized Agent

TABULATIONS

All lots	=	4.6081
Arterial	=	
R.O.W. Local	=	2.3126
Open Space	=	0.6286
Total	=	7.5493
Lots this plat (incl. open space) =		65
Open space lots =		3

APPROVED: FOR PUBLIC WATER AND SEWERAGE SYSTEMS, HOWARD COUNTY HEALTH DEPARTMENT.

Palm F. Wine 11-4-69
 COUNTY HEALTH OFFICER DATE

APPROVED: HOWARD COUNTY OFFICE OF PLANNING AND ZONING.

Thomas D. Harris, Jr. 11-4-69
 DIRECTOR DATE

APPROVED: FOR PUBLIC WATER AND PUBLIC SEWERAGE, STORM DRAINAGE SYSTEMS AND PUBLIC ROADS, HOWARD COUNTY DEPARTMENT OF PUBLIC WORKS.

Norman S. Orville 11-3-69
 DIRECTOR DATE

SURVEYOR'S, ENGINEER'S and OWNER'S CERTIFICATES

The undersigned, owner of the property shown on this Plat, grants unto, (1) Howard County, a Municipal Corporation, its successors and assigns, the right to lay, construct and maintain water and sewer mains and laterals therefor in and under all road and street rights-of-way as shown hereon; (2) further, it adopts this plan of subdivision and reserves the fee simple title to the beds of the streets and/or roads hereon, except however, for one dollar consideration, it herewith grants the right and option to Howard County, a Municipal Corporation, to acquire (within a period of five years commencing with the date of recording of this plat among the Land Records of Howard County) the fee simple title to the beds of the streets and/or roads shown hereon, together with such adjacent land, if any, as may be shown on this plat as areas designated for the installation of street lighting facilities, reserving, however, unto Grantor, its successors and assigns, the right in perpetuity to lay, construct, enlarge, maintain and use cables and/or conduits for electrical transmission and other purposes beneath the surface of the lands subject to the rights granted hereon to said Howard County. The undersigned certifies that the subdivision plan shown hereon is correct as complying with the requirements of Final Development Plan Phase I, recorded in Plat Book 11, Folios 69 to 73, each inclusive, with all Open Space shown thereon to be used for drainage easements, if necessary, and the requirements of Article 17, Section 60 of the annotated code of Maryland concerning the making of this Plat and setting of markers have been complied with. The land shown hereon is a part of the land which by deed dated December 13, 1966 and recorded among the Land Records of Howard County, Maryland in Liber 463 Folio 196 was granted and conveyed by C. Aileen Ames to the Howard Research and Development Corporation.

 PROFESSIONAL LAND SURVEYOR

 PROFESSIONAL ENGINEER

 OWNER

(By) *Thomas M. Wilson*
 GREENHORNE & O'MARA, INC. Reg. No. 3363
 6715 KENILWORTH AVE., RIVERDALE, MD.

(By) *Spaford Johnson*
 GREENHORNE & O'MARA, INC. Reg. No. 4955
 6715 KENILWORTH AVE., RIVERDALE, MD.

(By) *Thomas A. Garland*
 COLUMBIA TOWNHOUSE PROPERTIES, INC. Auth. Agent
 VILLAGE OF CROSS KEYS, BALTIMORE, MARYLAND

RECORDED IN PLATBOOK 17 FOLIO 83
 on NOVEMBER 5, 1969 among The Land Records of Howard County, Maryland

COLUMBIA
 VILLAGE OF WILDE LAKE SUBDIVISION

SECTION 7
 AREA 2

Sheet 1 of 1
 5TH Election District of Howard County, Md.
 Scale: 1" = 50' Date: June 23, 1969