

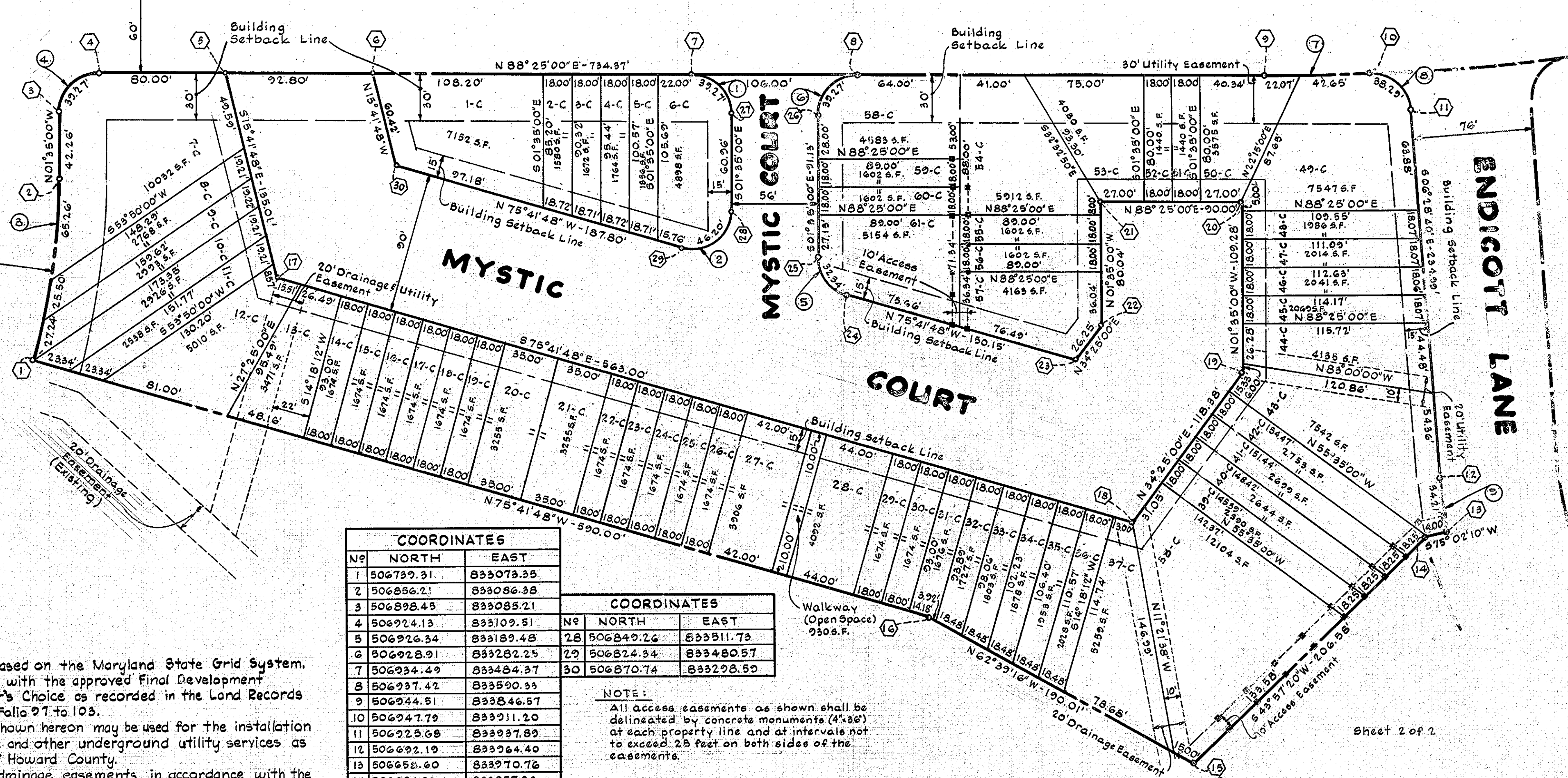
HESPERUS

Area 2, Section 1

DRIVE

ELIOT'S OAK ROAD

ENDICOTT LANE



LEGEND

- 3-A Lot Number
- ⓐ Coordinate Number
- Ⓐ Curve Number
- #5534 House Number

NOTE:

- The coordinates shown here on are based on the Maryland State Grid System.
- All requirements to be in accordance with the approved Final Development Criteria for Phase 30A, Village of Harper's Choice as recorded in the Land Records of Howard County in Plat Book 14, Folio 97 to 103.
- All utility and drainage easements shown hereon may be used for the installation and maintenance of sewer, drainage and other underground utility services as required by authorized agencies of Howard County.
- Open space is available for use as drainage easements in accordance with the approved Final Development Criteria for Phase 30A, Village of Harper's Choice as recorded in the Land Records of Howard County in Plat Book 14, folios 97 to 103.

GRANT OF EASEMENTS FOR WATER AND SEWER

We, the Howard Homes, Inc., Owner of the property shown and described hereon do hereby grant unto the Howard County Metropolitan Commission, its successors and assigns, the right to lay, construct and maintain water and sewer mains and service pipes in connection therewith in and under the right-of-way of the roads, streets and utility easements as shown hereon.

HOWARD HOMES, INC.

By: *Lee B. Rosenberg*
Lee B. Rosenberg, President

COORDINATES		
No	NORTH	EAST
1	506739.31	833073.35
2	506856.21	833086.38
3	506898.45	833085.21
4	506924.13	833109.51
5	506926.34	833189.48
6	506928.91	833232.25
7	506934.49	833434.37
8	506937.42	833590.33
9	506944.51	833846.57
10	506947.79	833911.20
11	506925.68	833937.89
12	506922.19	833964.40
13	506658.60	833970.76
14	506654.99	833957.23
15	506506.27	833813.84
16	506593.58	833645.07
17	506796.36	833226.01
18	506657.27	833771.56
19	506754.93	833838.47
20	506864.17	833835.45
21	506861.68	833745.48
22	506781.67	833747.69
23	506760.02	833732.86
24	506797.11	833587.36
25	506820.65	833968.55
26	506911.74	833566.03
27	506910.19	833510.05

COORDINATES		
No	NORTH	EAST
28	506849.26	833311.73
29	506824.34	833480.57
30	506870.74	833298.59

NOTE:
All access easements as shown shall be delineated by concrete monuments (4"x3") at each property line and at intervals not to exceed 25 feet on both sides of the easements.

CURVE DATA						
NO.	RADIUS	Δ	LENGTH	TANGENT	CHORD	CHORD BEARING
1	25.00'	90°00'00"	39.27'	25.00'	35.36'	S46°35'00"E
2	25.00'	105°53'12"	46.20'	33.11'	39.90'	S51°21'36"W
3	425.57'	15°53'12"	118.00'	59.38'	117.62'	N06°21'37"E
4	25.00'	90°00'00"	39.27'	25.00'	35.36'	N43°25'02"E
5	25.00'	74°06'48"	32.34'	18.88'	30.13'	N38°38'25"W
6	25.00'	90°00'00"	39.27'	25.00'	35.36'	N43°25'00"E
7	1401.88'	02°38'48"	64.72'	32.37'	64.72'	N87°05'38"E
8	25.00'	87°45'03"	38.29'	24.04'	34.66'	S50°21'10"E
9	231.00'	08°29'10"	34.21'	17.14'	34.18'	S10°48'17"E

Total Roadway Area = 1.768 Acres
 Total Lot Area = 4.319 Acres
 Total Open Space Area = 0.021 Acres
 Total Area This Sheet = 6.108 Acres
 Total Number of Lots = 61 on sheet 1 of 2

ENGINEERS
 WHITMAN, REQUARDT & ASSOCIATES
 1804 St. Paul Street
 Baltimore, Maryland 21202

APPROVED: FOR PUBLIC WATER AND PUBLIC SEWERAGE SYSTEMS, HOWARD COUNTY HEALTH DEPARTMENT
[Signature] Date: 10-3-68
 County Health Officer

APPROVED: HOWARD COUNTY PLANNING COMMISSION
[Signature] Date: 10-3-68
 Chairman

APPROVED: HOWARD COUNTY ROADS DEPARTMENT
[Signature] Date: 10-3-68
 Road Superintendent

APPROVED: HOWARD COUNTY METROPOLITAN COMMISSION
[Signature] Date: 10-3-68
 Chief Engineer

OWNERS CERTIFICATE:
 We, Howard Homes, Inc., owners of the property shown and described hereon adopt this plan of subdivision, and reserve the fee simple title to the beds of the streets and/or roads shown hereon, and in consideration of the approval of the plat by the Planning Commission of Howard County, Maryland, we ourselves, our heirs or assigns do hereby grant unto the Board of County Commissioners of Howard County, the right and option to acquire for the consideration of one dollar, the fee simple title to the beds of the streets and/or roads shown hereon within the period of five years from the date of the recording of this plat among the Land Records of Howard County, Maryland.

Witness our hand and seal this 23rd day of August 1968.
 By: *[Signature]*
 Lee B. Rosenberg, President

SURVEYORS CERTIFICATE:
 I, Kenneth A. McCord, hereby certify that the plan shown hereon is correct, that it is a subdivision of part of the land which by deed dated 9/18/68 and recorded among the Land Records of Howard County, Maryland in Liber 425 at Folio 464 was granted and conveyed by Howard Research and Development Corporation to Howard Homes, Inc., and that stones and monuments marked thus are in place as shown.

I, further certify that the requirements of Section 60, Article 17, of the Annotated Code of Maryland (as amended) as far as they relate to the making of this plat have been complied with.

[Signature]
 (Kenneth A. McCord) Reg. P.E. & L.S. No. 1974.

RECORDED IN PLAT BOOK 15 FOLIO 42 on 10/11, 1968
 among the Land Records of Howard County, Maryland.

COLUMBIA
 ELECTION DISTRICT No. 5
 HOWARD COUNTY, MARYLAND

VILLAGE OF HARPER'S CHOICE

SECTION 3, AREA 2
 RESUBDIVISION OF LOT 1

SHEET 1 OF 2

Date: August 22, 1968 Scale: 1" = 50'

COORDINATES		
No.	NORTH	EAST
10	506247.79	833911.20
11	506225.68	833937.89
12	50622.19	833964.40
13	506658.60	833970.76
14	506654.99	833957.23
15	506506.27	833813.84
31	506379.99	834058.01
32	506374.99	834250.01
33	506459.98	834345.01
34	506613.01	834383.44
35	506619.04	834279.65
36	506651.02	834174.40
37	506782.25	834112.74
38	506851.08	834125.50
39	506899.53	834168.83
40	506984.15	834141.06
41	506962.36	834034.14
42	506934.87	834013.33
43	506700.76	834039.91
44	506569.94	834148.87
45	506542.04	834240.72
46	506455.92	834214.56
47	506483.83	834122.70

CURVE DATA						
No.	Radius	Δ	Length	Tangent	Chord	Chord Brg.
8	25.00	87°45'03"	38.29	24.04	34.66	N50°21'10"W
9	231.00	08°29'10"	34.21	17.14	34.18	S10°43'17"E
10	245.00	58°08'13"	248.60	136.19	236.07	N44°01'56"W
11	155.00	66°37'23"	180.23	101.86	170.25	S39°47'22"E
12	25.00	87°11'17"	38.04	23.80	34.48	S37°06'58"W
13	1401.88	04°27'39"	109.15	54.60	109.12	N78°28'48"E
14	1401.88	05°03'40"	123.83	61.96	123.79	N83°14'27"E

NOTE:

All access easements as shown shall be delineated by concrete monuments (4"x36") at each property line and at intervals not to exceed 25 feet on both sides of the easement.

LEGEND

- 74-C Lot Number
- Ⓢ Coordinate Number
- Ⓣ Curve Number
- #5458 House Number

NOTE:

- The coordinates shown hereon are based on the Maryland State Grid System.
- All requirements to be in accordance with the approved Final Development Criteria for Phase 30A, Village of Harper's Choice as recorded in the Land Records of Howard County in Plat Book 14, Folios 97 to 103.
- All utility and drainage easements shown hereon may be used for the installation and maintenance of sewer, drainage and other underground utility services as required by authorized agencies of Howard County.
- Open space is available for use as drainage easements in accordance with the approved Final Development Criteria for Phase 30A, Village of Harper's Choice as recorded in the Land Records of Howard County in Plat Book 14, Folios 97 to 103.

GRANT OF EASEMENTS FOR WATER AND SEWER

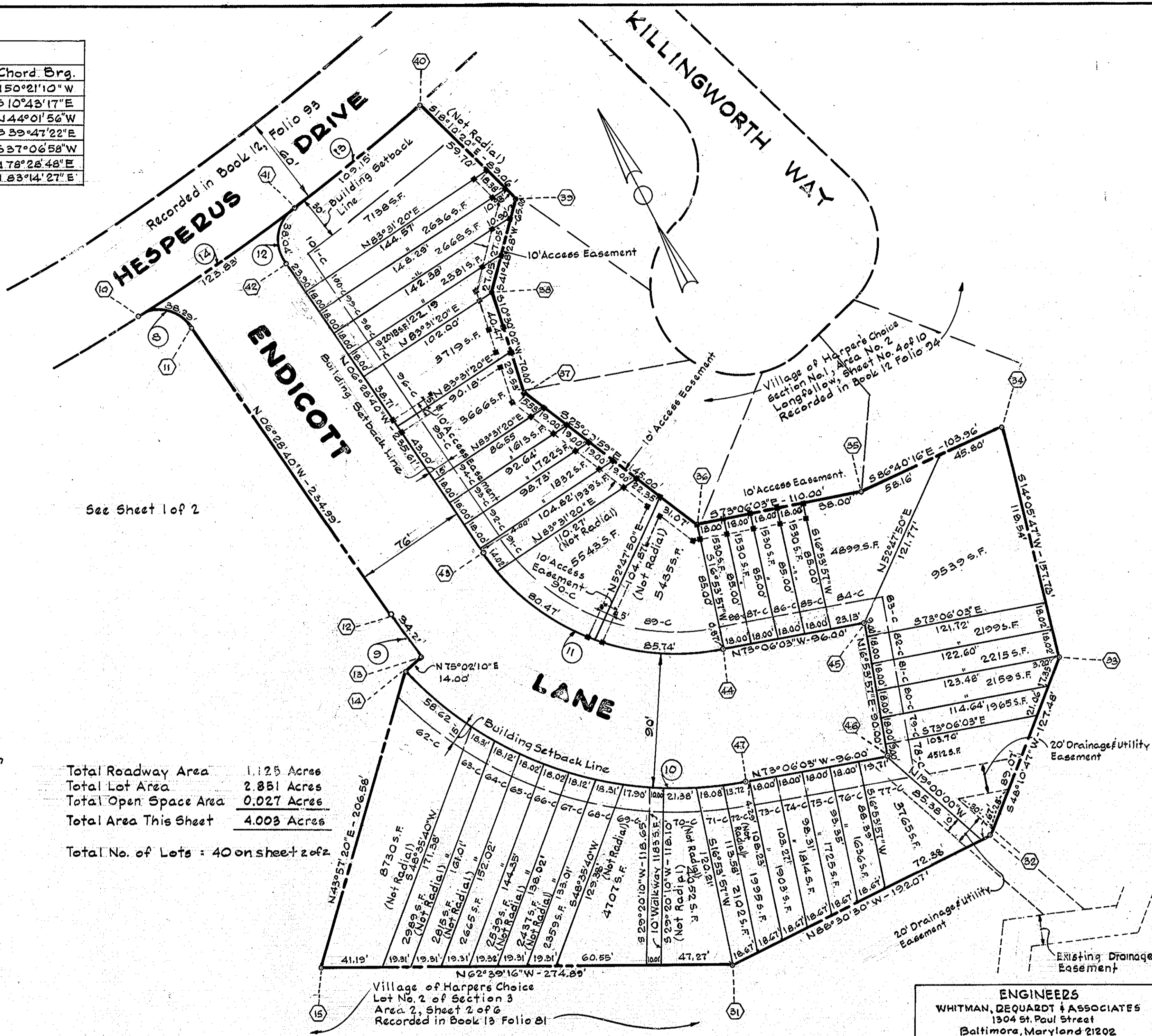
We, the Howard Homes, Inc., Owner of the property shown and described hereon do hereby grant unto the Howard County Metropolitan Commission, its successors and assigns, the right to lay, construct and maintain water and sewer mains and service pipes in connection therewith in and under the right-of-way of the roads, streets and utility easements as shown hereon.

HOWARD HOMES, INC.

By Lee B. Rosenberg
Lee B. Rosenberg, President

Total Roadway Area 1.125 Acres
 Total Lot Area 2.851 Acres
 Total Open Space Area 0.027 Acres
 Total Area This Sheet 4.003 Acres

Total No. of Lots : 40 on sheet 2 of 2



Village of Harper's Choice
 Lot No. 2 of Section 3
 Area 2, Sheet 2 of 6
 Recorded in Book 13 Folio 81

ENGINEERS
 WHITMAN, DEQUARDT & ASSOCIATES
 1304 St. Paul Street
 Baltimore, Maryland 21202

APPROVED: FOR PUBLIC WATER AND PUBLIC SEWERAGE SYSTEMS, HOWARD COUNTY HEALTH DEPARTMENT	
<u>[Signature]</u> COUNTY HEALTH OFFICER	DATE Sept-1968
APPROVED: HOWARD COUNTY PLANNING COMM.	
<u>[Signature]</u> CHAIRMAN	DATE Oct 9 1968
APPROVED: HOWARD COUNTY ROADS DEPARTMENT	
<u>[Signature]</u> ROADS SUPERINTENDENT	DATE 10-3-68
APPROVED: HOWARD COUNTY METROPOLITAN COMM.	
<u>[Signature]</u> CHIEF ENGINEER	DATE 10-3-68

OWNERS CERTIFICATE:

We, Howard Homes, Inc., Owners of the property shown and described hereon adopt this plan of subdivision, and reserve the fee simple title to the beds of the streets and/or roads shown hereon, and in consideration of the approval of the plat by The Planning Commission of Howard County, Maryland, we ourselves, our heirs, or assigns do hereby grant unto the Board of County Commissioners of Howard County, the right and option to acquire for the consideration of one Dollar, the fee simple title to the beds of the streets and/or roads shown hereon within the period of five years from the date of the recording of this plat among the Land Records of Howard County, Maryland.

Witness our hand and seal this 23rd day of August 1968.

By Lee B. Rosenberg
Lee B. Rosenberg, President.

SURVEYORS CERTIFICATE:

I, Kenneth A. McCord, hereby certify that the plan shown hereon is correct, that it is a subdivision of part of the land which by deed dated 9/18/68 and recorded among the Land Records of Howard County, Maryland in Liber 495 at Folio 464 was granted and conveyed by Howard Research and Development Corporation to Howard Homes, Inc., and that stakes and monuments marked thus ■ are in place as shown.

I, further certify that the requirements of Section 60, Article 17, of the Annotated Code of Maryland (as amended) as far as they relate to the making of this plat have been complied with.

[Signature]
Kenneth A. McCord Reg. P.E. & L.S. No. 1974.

Recorded in PLAT BOOK 15 FOLIO 50 on 10/11, 1968, among the Land Records of Howard County, Maryland.

COLUMBIA ELECTION DISTRICT No. 5 HOWARD COUNTY, MARYLAND

VILLAGE OF HARPER'S CHOICE

SECTION 3, AREA 2
 RESUBDIVISION OF LOT 1
 SHEET 2 OF 2

Date: August 22, 1968 Scale: 1" = 50'