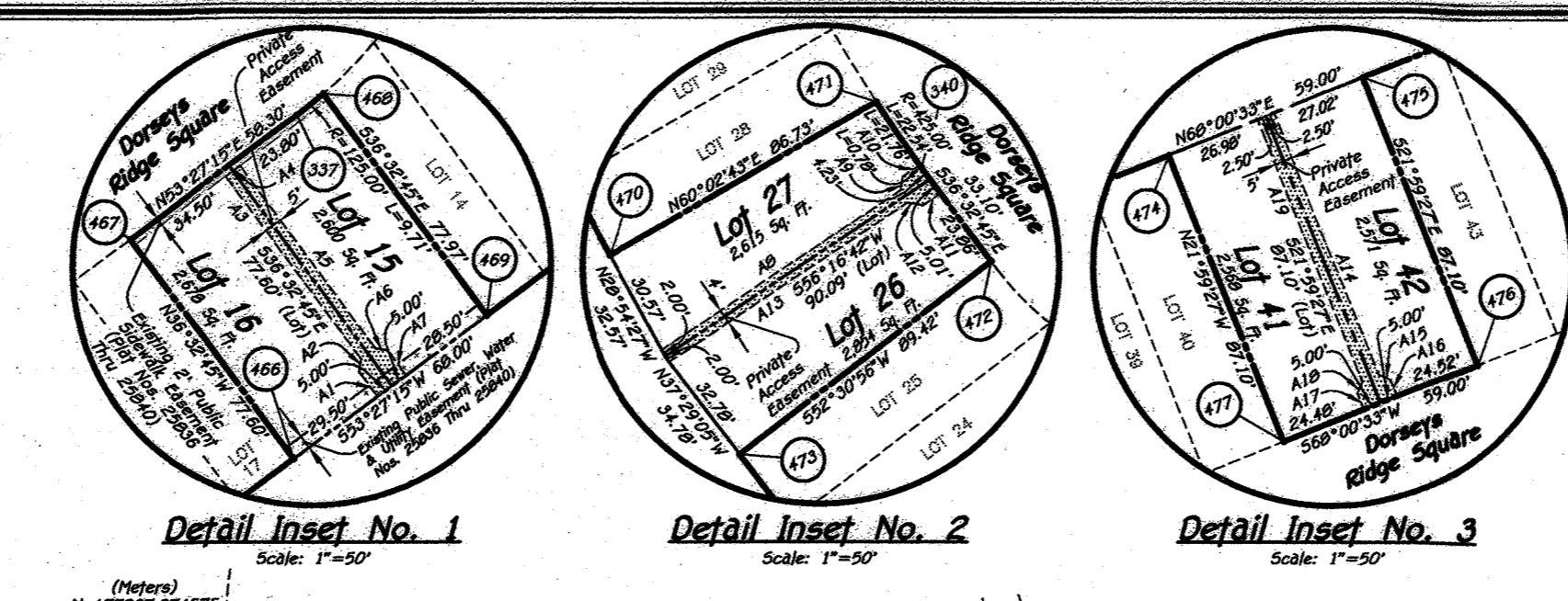


I:\2015\15000.dwg\RECORD PLATS\PHASE 2\REVISION PLAT-LOTS 15-16-26-27-41-42 & OS Lot 61.dwg, 1/16/2022 3:56:30 PM, Downstairs T1500 (temporary).pc3

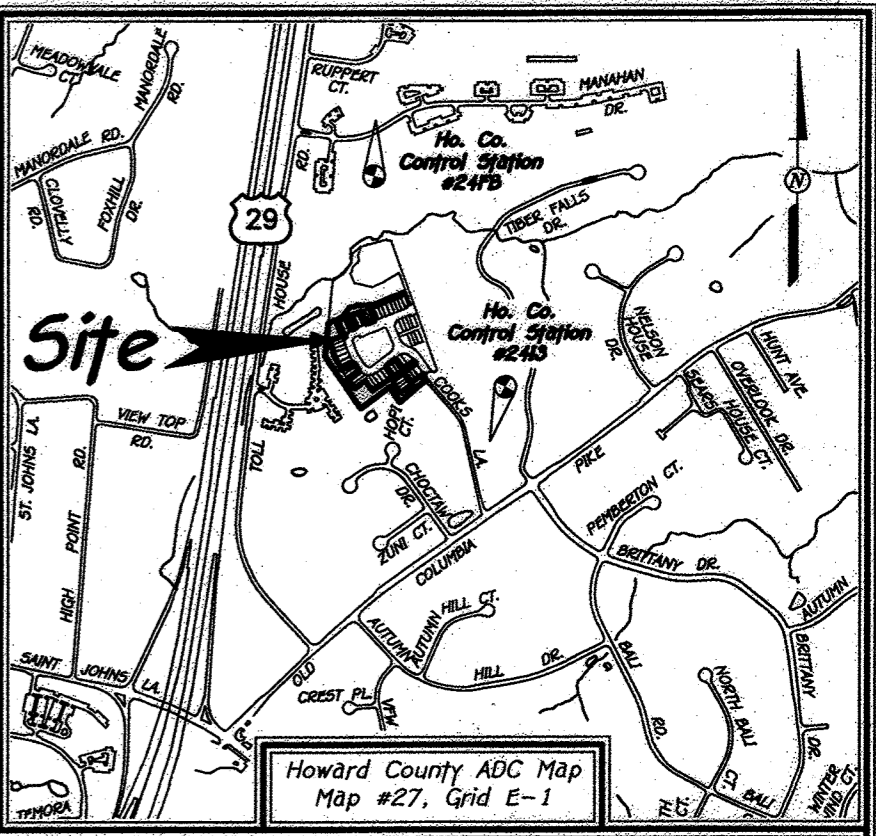
U.S. Equivalent Coordinate Table		Metric Coordinate Table		U.S. Equivalent Coordinate Table		Metric Coordinate Table		
POINT	NORTH (feet)	EAST (feet)	NORTH (meters)	EAST (meters)	POINT	NORTH (feet)	EAST (feet)	
104	580924.9122	136442.8347	177084.59624	415062.92716	433	581497.1814	136442.9009	177204.68624
227	581178.0112	136394.9406	177143.41207	415729.90262	434	581501.9956	136433.9717	177242.12060
228	580953.9180	136416.8000	177044.50679	415794.74377	435	581577.7349	136431.6180	177255.48003
310	581343.4341	136416.8000	177193.83124	415791.78416	444	581495.4170	136493.6119	177134.99681
311	581295.4670	136406.2230	177176.21294	415766.21630	445	580961.0060	136423.4809	177077.26903
312	581200.6663	136402.1233	177160.79749	415760.87076	446	581025.2508	136419.6033	177096.05637
313	581274.3099	136397.0202	177172.76299	415738.94841	447	580976.3217	136417.9982	177081.93709
314	581020.0282	136416.8000	177044.50679	415794.74377	448	581168.1958	136406.7843	177124.94530
315	580929.3140	136409.1350	177056.31656	415676.73604	449	581097.7189	136403.6812	177106.19740
316	581019.3624	136426.8944	177095.09839	415917.73257	450	581014.6228	136402.0449	177093.61129
317	581055.6183	136451.4617	177106.79749	415919.17147	451	581014.6228	136402.0449	177093.61129
318	581055.6183	136451.4617	177106.79749	415919.17147	452	581014.6228	136402.0449	177093.61129
319	581055.6183	136451.4617	177106.79749	415919.17147	453	581014.6228	136402.0449	177093.61129
320	581055.6183	136451.4617	177106.79749	415919.17147	454	581014.6228	136402.0449	177093.61129
321	581055.6183	136451.4617	177106.79749	415919.17147	455	581014.6228	136402.0449	177093.61129
322	581055.6183	136451.4617	177106.79749	415919.17147	456	581014.6228	136402.0449	177093.61129
323	581055.6183	136451.4617	177106.79749	415919.17147	457	581014.6228	136402.0449	177093.61129
324	581055.6183	136451.4617	177106.79749	415919.17147	458	581014.6228	136402.0449	177093.61129
325	581055.6183	136451.4617	177106.79749	415919.17147	459	581014.6228	136402.0449	177093.61129
326	581055.6183	136451.4617	177106.79749	415919.17147	460	581014.6228	136402.0449	177093.61129
327	581055.6183	136451.4617	177106.79749	415919.17147	461	581014.6228	136402.0449	177093.61129
328	581055.6183	136451.4617	177106.79749	415919.17147	462	581014.6228	136402.0449	177093.61129
329	581055.6183	136451.4617	177106.79749	415919.17147	463	581014.6228	136402.0449	177093.61129
330	581055.6183	136451.4617	177106.79749	415919.17147	464	581014.6228	136402.0449	177093.61129
331	581055.6183	136451.4617	177106.79749	415919.17147	465	581014.6228	136402.0449	177093.61129
332	581055.6183	136451.4617	177106.79749	415919.17147	466	581014.6228	136402.0449	177093.61129
333	581055.6183	136451.4617	177106.79749	415919.17147	467	581014.6228	136402.0449	177093.61129
334	581055.6183	136451.4617	177106.79749	415919.17147	468	581014.6228	136402.0449	177093.61129
335	581055.6183	136451.4617	177106.79749	415919.17147	469	581014.6228	136402.0449	177093.61129
336	581055.6183	136451.4617	177106.79749	415919.17147	470	581014.6228	136402.0449	177093.61129
337	581055.6183	136451.4617	177106.79749	415919.17147	471	581014.6228	136402.0449	177093.61129
338	581055.6183	136451.4617	177106.79749	415919.17147	472	581014.6228	136402.0449	177093.61129
339	581055.6183	136451.4617	177106.79749	415919.17147	473	581014.6228	136402.0449	177093.61129
340	581055.6183	136451.4617	177106.79749	415919.17147	474	581014.6228	136402.0449	177093.61129
341	581055.6183	136451.4617	177106.79749	415919.17147	475	581014.6228	136402.0449	177093.61129
342	581055.6183	136451.4617	177106.79749	415919.17147	476	581014.6228	136402.0449	177093.61129
343	581055.6183	136451.4617	177106.79749	415919.17147	477	581014.6228	136402.0449	177093.61129
344	581055.6183	136451.4617	177106.79749	415919.17147	478	581014.6228	136402.0449	177093.61129
345	581055.6183	136451.4617	177106.79749	415919.17147	479	581014.6228	136402.0449	177093.61129
346	581055.6183	136451.4617	177106.79749	415919.17147	480	581014.6228	136402.0449	177093.61129
347	581055.6183	136451.4617	177106.79749	415919.17147	481	581014.6228	136402.0449	177093.61129
348	581055.6183	136451.4617	177106.79749	415919.17147	482	581014.6228	136402.0449	177093.61129
349	581055.6183	136451.4617	177106.79749	415919.17147	483	581014.6228	136402.0449	177093.61129
350	581055.6183	136451.4617	177106.79749	415919.17147	484	581014.6228	136402.0449	177093.61129
351	581055.6183	136451.4617	177106.79749	415919.17147	485	581014.6228	136402.0449	177093.61129
352	581055.6183	136451.4617	177106.79749	415919.17147	486	581014.6228	136402.0449	177093.61129
353	581055.6183	136451.4617	177106.79749	415919.17147	487	581014.6228	136402.0449	177093.61129
354	581055.6183	136451.4617	177106.79749	415919.17147	488	581014.6228	136402.0449	177093.61129
355	581055.6183	136451.4617	177106.79749	415919.17147	489	581014.6228	136402.0449	177093.61129
356	581055.6183	136451.4617	177106.79749	415919.17147	490	581014.6228	136402.0449	177093.61129
357	581055.6183	136451.4617	177106.79749	415919.17147	491	581014.6228	136402.0449	177093.61129
358	581055.6183	136451.4617	177106.79749	415919.17147	492	581014.6228	136402.0449	177093.61129
359	581055.6183	136451.4617	177106.79749	415919.17147	493	581014.6228	136402.0449	177093.61129
360	581055.6183	136451.4617	177106.79749	415919.17147	494	581014.6228	136402.0449	177093.61129
361	581055.6183	136451.4617	177106.79749	415919.17147	495	581014.6228	136402.0449	177093.61129
362	581055.6183	136451.4617	177106.79749	415919.17147	496	581014.6228	136402.0449	177093.61129
363	581055.6183	136451.4617	177106.79749	415919.17147	497	581014.6228	136402.0449	177093.61129
364	581055.6183	136451.4617	177106.79749	415919.17147	498	581014.6228	136402.0449	177093.61129
365	581055.6183	136451.4617	177106.79749	415919.17147	499	581014.6228	136402.0449	177093.61129
366	581055.6183	136451.4617	177106.79749	415919.17147	500	581014.6228	136402.0449	177093.61129



Owner
Dorsey's Ridge, LLC
c/o Dave Woessner
308 Magogy Road
Severna Park, Maryland 21146
Ph# 410-461-0837

Owner
Dorsey's Ridge Homeowners Association, Inc.
c/o Dave Woessner
308 Magogy Road
Severna Park, Maryland 21146
Ph# 410-461-0837

Developer
Terry's Place Development, LLC
c/o Dave Woessner
308 Magogy Road
Severna Park, Maryland 21146
Ph# 410-461-0837



The Requirements 3-108, The Real Property Article, Annotated Code of Maryland, 1988 Replacement Volume, (As Supplemented) As Far As They Relate To The Mating of This Plat And The Setting of Markers Has Been Reviewed And Approved By Me On This Date.

Frank John Manalansan II 3/14/22
Professional Land Surveyor No. 21476
Date

David Woessner 3/14/2022
Professional Land Surveyor No. 21476
Date

David Woessner 3/14/2022
Professional Land Surveyor No. 21476
Date

Dorsey's Ridge, LLC
By: Dave Woessner, Managing Member

Dorsey's Ridge Homeowners Association, Inc.
By: Dave Woessner, President

This Subdivision Is Subject To Section 18.122B Of The Howard County Code, Public Water And Public Sewer Service Has Been Granted Under The Terms And Provisions, Thereof, Effective 11/23/2020 On Which Date Developer Agreement 14-5063-D Was Filed And Accepted.

Reservation Of Public Utility Easements

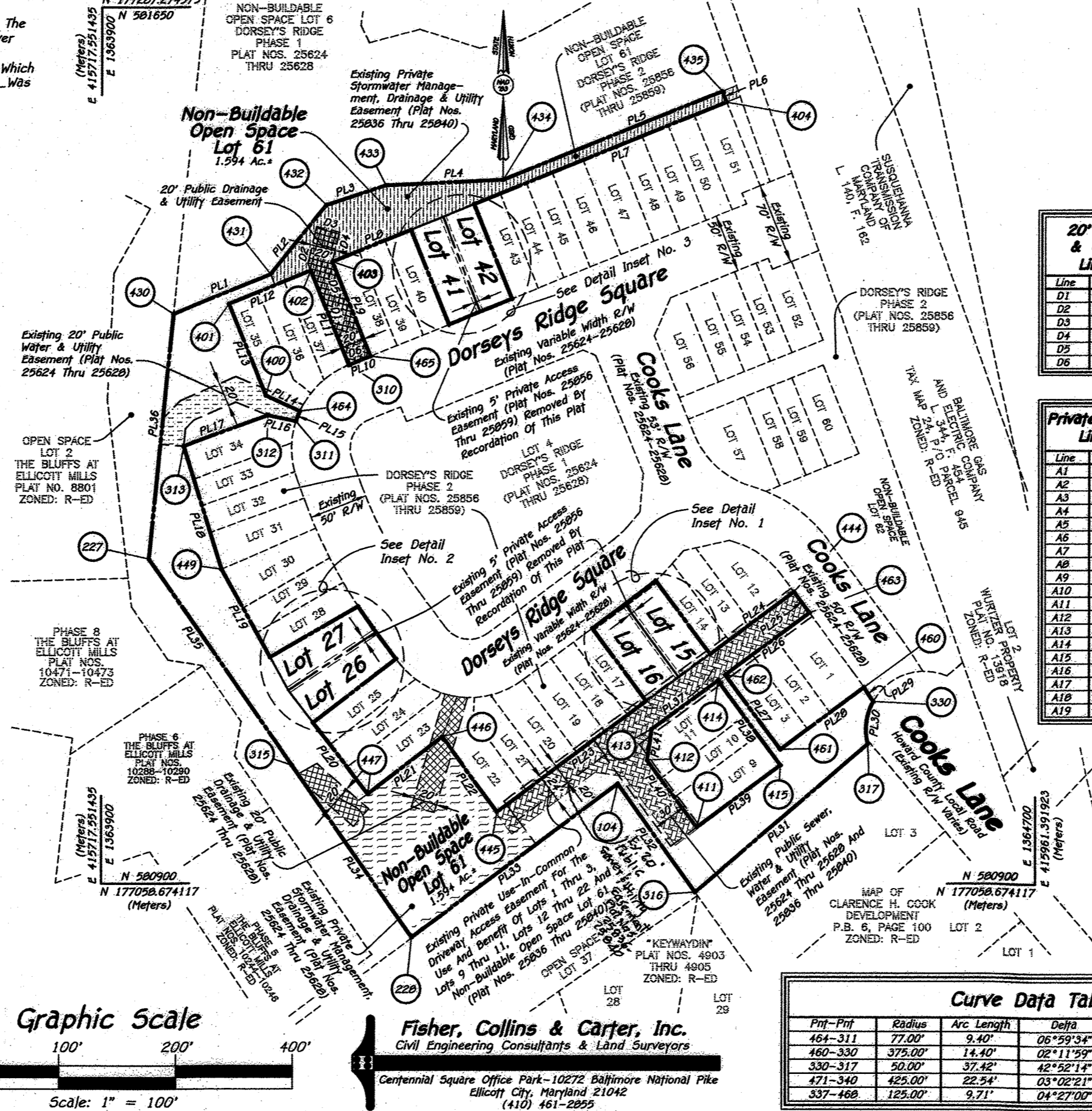
*Developer Reserves Unto Itself, Its Successors And Assigns, All Easements Shown On This Plan For Water, Sewer, Storm Drainage, And Other Public Utilities Located In, On, Over, And Through Lots 15, 16, 26, 27, 41 And 42 And Non-Buildable Open Space Lot 61. Any Conveyances Of The Aforesaid Lots Shall Be Subject To The Easements Herein Reserved, Whether Or Not Expressly Stated In The Deed(s) Conveying Said Lots. Developer Shall Execute And Deliver Deeds For The Easements Herein Reserved To Howard County. Upon Completion Of The Public Utilities And Their Acceptance By Howard County, The County Shall Accept The Easements And Record The Deed(s) Of Easement In The Land Records Of Howard County.

Legend

- Existing Private Use-In-Common Driveway Access Easement For The Use And Benefit Of Lots 1 Thru 3, Non-Buildable Bulk Parcel 'C' (Future Lots 9 Thru 11), Part Of Non-Buildable Bulk Parcel 'B' (Future Lots 12 Thru 22) And Non-Buildable Open Space Lot 61 (Plat Nos. 25836 Thru 25940)
- Existing Public Sewer, Water & Utility Easement (Plat Nos. 25624 Thru 25628 And 25836 Thru 25940)
- Existing 20' Public Water & Utility Easement (Plat Nos. 25624 Thru 25628)
- Existing 20' Public Drainage & Utility Easement (Plat Nos. 25624 Thru 25628)
- Existing Private Stormwater Management, Drainage & Utility Easement (Plat Nos. 25836 Thru 25940)
- Existing Private Stormwater Management, Drainage & Utility Easement (Plat Nos. 25836 Thru 25940)
- Existing 2' Public Sidewalk Easement (Plat Nos. 25836 Thru 25940)
- 20' Public Drainage & Utility Easement
- Private Access Easement

Property Line Line Table Chart

Line	Bearing	Length
PL1	N 68°00'33" E	99.23'
PL2	N 36°52'42" E	75.00'
PL3	N 71°45'28" E	53.63'
PL4	N 67°16'43" E	101.18'
PL5	N 68°00'33" E	206.37'
PL6	N 68°00'33" W	72.51'
PL7	S 68°00'33" W	233.09'
PL8	S 68°00'33" W	72.51'
PL9	S 21°59'27" E	87.10'
PL10	S 68°00'33" W	20.00'
PL11	N 21°59'27" W	87.10'
PL12	N 68°00'33" W	79.90'
PL13	S 21°59'27" E	84.74'
PL14	S 65°17'27" E	32.04'
PL15	R=77.00'	L=9.40'
Chd=5	21°12'46" W	9.39'
PL16	N 77°49'39" W	24.69'
PL17	S 69°52'17" E	76.60'
PL18	S 17°01'21" E	110.80'
PL19	S 26°54'27" E	85.83'
PL20	S 37°29'07" E	76.93'
PL21	N 82°31'02" E	80.41'
PL22	S 36°32'49" E	79.97'
PL23	N 53°27'19" E	139.00'
PL24	N 53°27'19" E	89.41'
PL25	S 36°32'49" E	22.20'
PL26	S 53°27'19" W	89.57'
PL27	S 36°32'49" E	79.20'
PL28	N 53°27'19" E	89.17'
PL29	R=375.00'	L=14.40'
Chd=5	32°48'28" E	14.40'
PL30	N 07°10'37" W	137.42'
PL31	S 49°18'37" W	194.87'
PL32	N 35°36'09" W	113.89'
PL33	S 53°24'59" W	220.47'
PL34	N 34°53'02" W	179.58'
PL35	N 34°40'17" W	215.44'
PL36	N 07°10'37" W	210.89'
PL37	N 53°27'19" E	70.35'
PL38	S 36°32'49" E	90.15'
PL39	S 53°27'19" W	89.29'
PL40	N 36°32'49" W	71.25'
PL41	N 08°27'19" E	26.73'



20' Public Drainage & Utility Easement Line Table Chart

Line	Bearing	Length
D1	N 21°59'27" W	93.45'
D2	N 13°14'53" E	32.50'
D3	S 76°49'07" E	20.00'
D4	S 13°14'53" E	29.97'
D5	S 21°59'27" E	87.10'
D6	S 68°00'32" W	20.00'

Private Access Easement Line Table Chart

Line	Bearing	Length
A1	N 36°32'40" W	8.76'
A2	N 08°27'00" E	3.94'
A3	N 36°32'40" W	64.34'
A4	S 26°54'27" E	