

The Requirements § 3-108, The Real Property Article, Annotated Code of Maryland, 1989 Replacement Volume, (As Supplemented) As Far As They Relate To The Making Of This Plat And The Setting Of Markers Have Been Complied With.

Mark L. Robel 1/08/20
Date
Mark L. Robel, P.L.S. #339
(Property Line Surveyor)
1-8-2020
Date
Columbia Association, Inc.
By: Dennis Matthey, Director Of
Open Space And Facility Services

Legend

- Existing 20' Wide Utility And Drainage Easement (P.B. 12, Pg. 90, P.B. 12, Pg. 96 And 98, P.B. 13, Pg. 2, 3, 5 And 6, And P.B. 13, Pg. 30 And 31)
- Existing Storm Drain Easement (P.B. 12, Pgs. 96 And 98 And P.B. 13, Pg. 29)
- Perpetual Easement Area For Stream Restoration And Maintenance

PERPETUAL EASEMENT AREA FOR STREAM RESTORATION AND MAINTENANCE NO. 11

1	S78°33'37"E	251.77'
2	S56°22'25"E	151.89'
3	R=370.45'	L=115.44'
CHD=N16°01'32"E, 114.98'		
4	N55°58'55"W	218.44'
5	N75°14'18"W	187.81'
6	N15°51'18"E	77.45'

PERPETUAL EASEMENT AREA:
38,860 SQ. FT. OR 0.892 ACRES±

SHOWN THUS:

Owner

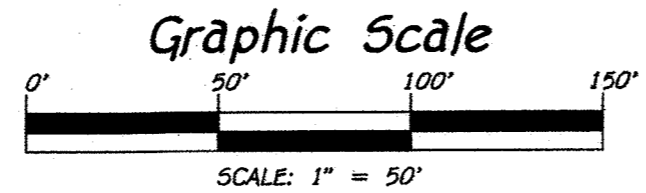
Columbia Association, Inc.
6310 Hillside Court
Suite 100
Columbia, Maryland 21046

Fisher, Collins & Carter, Inc.
Civil Engineering Consultants & Land Surveyors

Centennial Square Office Park-10272 Baltimore National Pike
Ellicott City, Maryland 21042
(410) 461-2855

Area Tabulation This Sheet

TOTAL NUMBER OF BUILDABLE LOTS TO BE RECORDED	0
TOTAL NUMBER OF OPEN SPACE LOTS TO BE RECORDED	1
TOTAL NUMBER OF PARCELS TO BE RECORDED	0
TOTAL NUMBER OF LOTS/PARCELS TO BE RECORDED	1
TOTAL AREA OF BUILDABLE LOTS TO BE RECORDED	0.000 Ac.±
TOTAL AREA OF OPEN SPACE LOTS TO BE RECORDED	2.791 Ac.±
TOTAL AREA OF PARCELS TO BE RECORDED	0.000 Ac.±
TOTAL AREA OF LOTS/PARCELS TO BE RECORDED	2.791 Ac.±
TOTAL AREA OF ROADWAY TO BE RECORDED	0.000 Ac.±
TOTAL AREA TO BE RECORDED	2.791 Ac.±



Curve Data Tabulation

Proj-Prof	Radius	Arc Length	Delta	Tangent	Bearing & Distance
108-109	370.45'	260.15'	40°14'11"	135.70'	S 10°00'35" W 254.84'

APPROVED: For Public Water And Public Sewerage Systems
Howard County Health Department

Richard J. Davis 3/23/20
Howard County Health Officer Date

APPROVED: Howard County Department Of Planning And Zoning.

Chief Development Engineering Division 4/24/20 Date
Director 6/10/2020 Date

Owner's Certificate

We, Columbia Association, Inc., A Maryland Non-Profit Corporation, By Dennis Matthey, Director Of Open Space And Facility Services, Owners Of The Property Shown And Described Hereon, Hereby Adopt This Plat Of Revision; And In Consideration Of The Approval Of This Plat By The Department Of Planning And Zoning Hereby Establish The Perpetual Easement Areas For Stream Restoration And Maintenance Affecting The Property Shown On This Plat Of Revision. Witness My/Our Hand/s This 8th Day Of January, 2020.

By: *Dennis Matthey* 1-8-2020
Columbia Association, Inc.
Dennis Matthey, Director Of
Open Space And Facility Services

Attest: *Albert Edwards* 1-8-2020
Columbia Association, Inc.
Albert Edwards, P.E., Assistant Director
Of Open Space And Facility Services

Surveyor's Certificate

I Herby Certify To The Best Of My Knowledge That The Final Plat Shown Hereon Is Correct, That It Was Prepared By Me Or Under My Responsible Charge And That I Am A duly Licensed Property Line Surveyor Under The Laws Of The State Of Maryland; That It Is Part Of The Lands Conveyed By The Howard Research And Development Corporation To The Columbia Park And Recreation Association (The Columbia Park And Recreation Association Changed Its Name To Columbia Association, Inc. By Articles Of Amendment With Name Change Filed On April 15, 1991) By Deed Dated April 30, 1968 And Recorded Among The Land Records Of Howard County, Maryland In Liber 487 At Folio 269; And Being Open Space Lot 105, As Shown On Plats Entitled "Columbia, Village Of Harper's Choice, Section 1, Longfellow Area 1" Recorded Among The Aforesaid Land Records In Plat Book 12 At Pages 86 Thru 90; Open Space Lots 1, 23 And 26, As Shown On Plats Entitled "Columbia, Village Of Harper's Choice, Section 1, Longfellow Area 3" Recorded Among The Aforesaid Land Records In Plat Book 13 At Pages 1 Thru 9; And Open Space Lots 1 And 21, As Shown On Plats Entitled "Columbia, Village Of Harper's Choice, Section 1, Longfellow Area 4" Recorded Among The Aforesaid Land Records In Plat Book 13 At Pages 29 Thru 38; And Verification Of Existing Monuments Or Setting New Monuments Was Not Performed Since A Boundary Survey Per COMAR 09.13.06.03 Was Not The Purpose Of This Plat.

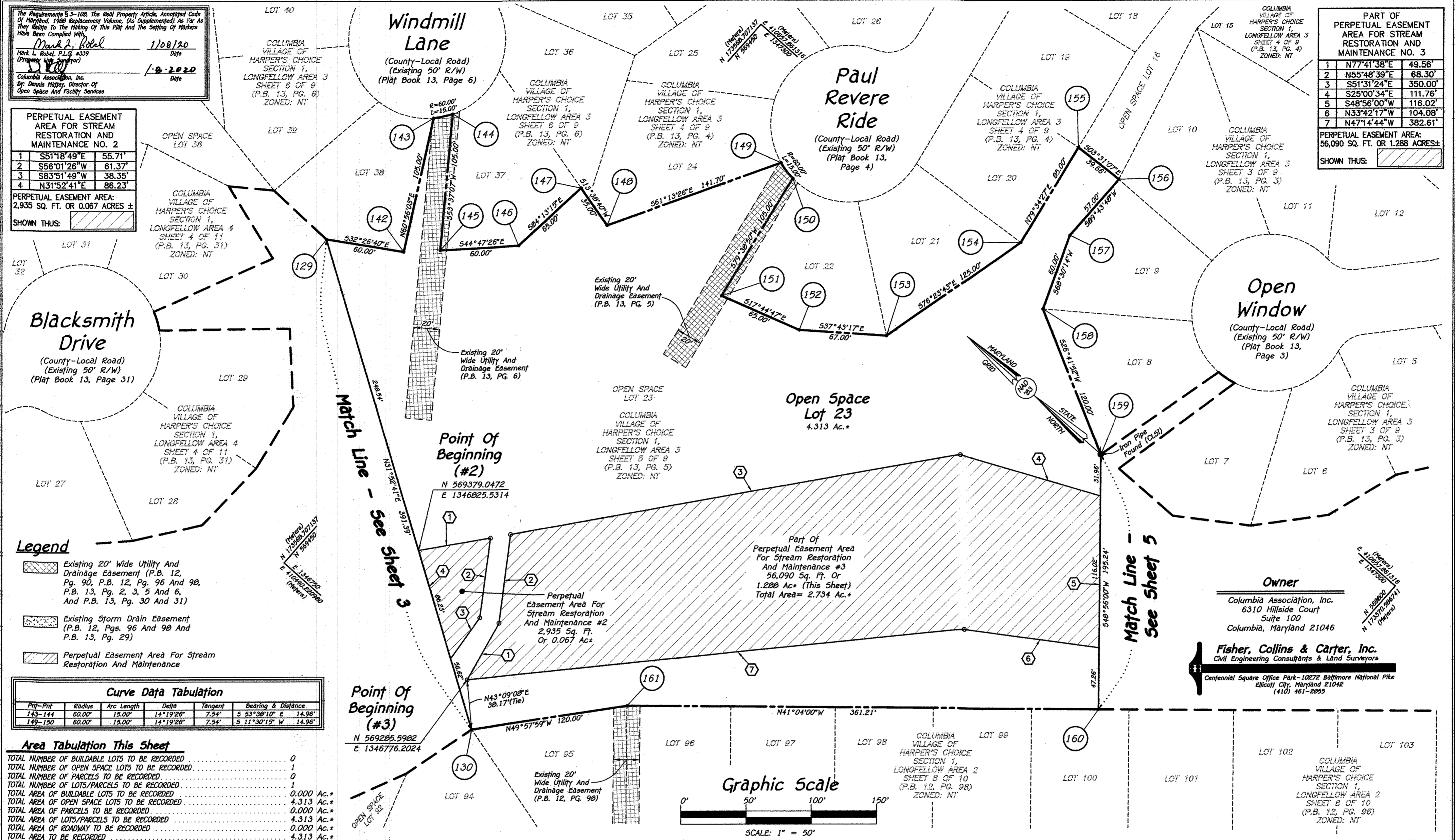
Mark L. Robel 1/08/20
Mark L. Robel, Property Line Surveyor No. 339 Date
Expiration Date: October 4, 2020

RECORDED AS PLAT No. 25432 ON 7/7/20
AMONG THE LAND RECORDS OF HOWARD COUNTY, MARYLAND.

**Plat Of Revision
Columbia
Village Of Harper's Choice
Section 1, Longfellow Area 1, Open Space Lot 105,
Section 1, Longfellow Area 3, Open Space Lots 1, 23
And 26, And Section 1, Longfellow Area 4,
Open Space Lots 1 And 21**

(Being A Revision To Open Space Lot 105, As Shown On Plats Entitled "Columbia, Village Of Harper's Choice, Section 1, Longfellow Area 1" Recorded Among The Land Records Of Howard County, Maryland In Plat Book 12 At Pages 86 Thru 90, A Revision To Open Space Lots 1, 23 And 26, As Shown On Plats Entitled "Columbia, Village Of Harper's Choice, Section 1, Longfellow Area 3" Recorded Among The Aforesaid Land Records In Plat Book 13 At Pages 1 Thru 9; And A Revision To Open Space Lots 1 And 21, As Shown On Plats Entitled "Columbia, Village Of Harper's Choice, Section 1, Longfellow Area 4" Recorded Among The Aforesaid Land Records In Plat Book 13 At Pages 29 Thru 38)

Zoned: NT
Tax Map: 29, Grid: 18, Parcels: 257, 259 And 260
Fifth Election District - Howard County, Maryland
Date: November 6, 2019 Scale: As Shown Sheet 2 Of 6



The Requirements 3-3-108, The Real Property Article, Annotated Code of Maryland, 1986 Replacement Volume, (as Supplemented) as far as they Relate to the Making of this Plat and the Setting of Markers Have Been Complied With.

Mark L. Robel, P.L.S. #339
 (Property Line Surveyor)
 Date: 1/08/20

Columbia Association, Inc.
 By: Dennis Matthey, Director of
 Open Space And Facility Services
 Date: 1-8-2020

PERPETUAL EASEMENT AREA FOR STREAM RESTORATION AND MAINTENANCE NO. 2

1	S51°18'49"E	55.71'
2	S56°01'26"W	61.37'
3	S83°51'49"W	38.35'
4	N31°52'41"E	86.23'

PERPETUAL EASEMENT AREA:
 2,935 SQ. FT. OR 0.067 ACRES ±

SHOWN THUS:

PART OF PERPETUAL EASEMENT AREA FOR STREAM RESTORATION AND MAINTENANCE NO. 3

1	N77°41'38"E	49.56'
2	N55°48'39"E	68.30'
3	S51°31'24"E	350.00'
4	S25°00'34"E	111.76'
5	S48°56'00"W	116.02'
6	N33°42'17"W	104.08'
7	N47°14'44"W	382.61'

PERPETUAL EASEMENT AREA:
 56,090 SQ. FT. OR 1.288 ACRES ±

SHOWN THUS:

Legend

- Existing 20' Wide Utility And Drainage Easement (P.B. 12, Pg. 90, P.B. 12, Pg. 96 And 98, P.B. 13, Pg. 2, 3, 5 And 6, And P.B. 13, Pg. 30 And 31)
- Existing Storm Drain Easement (P.B. 12, Pgs. 96 And 98 And P.B. 13, Pg. 29)
- Perpetual Easement Area For Stream Restoration And Maintenance

Curve Data Tabulation

PI-1-PI-2	Radius	Arc Length	Delta	Tangent	Bearing & Distance
143-144	60.00'	15.00'	14°19'28"	7.54'	S 53°38'10" E 14.98'
149-150	60.00'	15.00'	14°19'28"	7.54'	S 11°30'15" W 14.98'

Area Tabulation This Sheet

TOTAL NUMBER OF BUILDABLE LOTS TO BE RECORDED	0
TOTAL NUMBER OF OPEN SPACE LOTS TO BE RECORDED	1
TOTAL NUMBER OF PARCELS TO BE RECORDED	0
TOTAL NUMBER OF LOTS/PARCELS TO BE RECORDED	1
TOTAL AREA OF BUILDABLE LOTS TO BE RECORDED	0.000 Ac.±
TOTAL AREA OF OPEN SPACE LOTS TO BE RECORDED	4.313 Ac.±
TOTAL AREA OF PARCELS TO BE RECORDED	0.000 Ac.±
TOTAL AREA OF LOTS/PARCELS TO BE RECORDED	4.313 Ac.±
TOTAL AREA OF ROADWAY TO BE RECORDED	0.000 Ac.±
TOTAL AREA TO BE RECORDED	4.313 Ac.±

APPROVED: For Public Water And Public Sewerage Systems
 Howard County Health Department

[Signature] 3/23/20
 Howard County Health Officer M.O. Date

APPROVED: Howard County Department Of Planning And Zoning.

[Signature] 4/24/20
 Chief, Development Engineering Division Date

[Signature] 1/8/2020
 Director Date

Owner's Certificate

We, Columbia Association, Inc., A Maryland Non-Profit Corporation, By Dennis Matthey, Director Of Open Space And Facility Services, Owners Of The Property Shown And Described Hereon, Herby Adopt This Plat Of Revision; And In Consideration Of The Approval Of This Plat By The Department Of Planning And Zoning Herby Establish The Perpetual Easement Areas For Stream Restoration And Maintenance Affecting The Property Shown On This Plat Of Revision. Witness My/Our Hand/s This 8th Day Of January, 2020.

By: *[Signature]* 1-8-2020
 Columbia Association, Inc.
 Dennis Matthey, Director Of
 Open Space And Facility Services

Attest: *[Signature]* 1-8-2020
 Columbia Association, Inc.
 Albert Edwards, P.E., Assistant Director
 Of Open Space And Facility Services

Surveyor's Certificate

I Herby Certify To The Best Of My Knowledge That The Final Plat Shown Hereon Is Correct, That It Was Prepared By Me Or Under My Responsible Charge And That I Am A Duly Licensed Property Line Surveyor Under The Laws Of The State Of Maryland; That It Is Part Of The Lands Conveyed By The Howard Research And Development Corporation To The Columbia Park And Recreation Association (The Columbia Park And Recreation Association Changed Its Name To Columbia Association, Inc. By Articles Of Amendment With Name Change Filed On April 15, 1991) By Deed Dated April 30, 1988 And Recorded Among The Land Records Of Howard County, Maryland In Liber 487 At Folio 269; And Being Open Space Lot 105, As Shown On Plats Entitled "Columbia, Village Of Harper's Choice, Section 1, Longfellow Area 1" Recorded Among The Aforesaid Land Records In Plat Book 12 At Pages 26 Thru 90; Open Space Lots 1, 23 And 86, As Shown On Plats Entitled "Columbia, Village Of Harper's Choice, Section 1, Longfellow Area 3" Recorded Among The Aforesaid Land Records In Plat Book 13 At Pages 1 Thru 9; And Open Space Lots 1 And 21, As Shown On Plats Entitled "Columbia, Village Of Harper's Choice, Section 1, Longfellow Area 4" Recorded Among The Aforesaid Land Records In Plat Book 13 At Pages 28 Thru 38; And Verification Of Existing Monuments Or Setting New Monuments Was Not Performed Since A Boundary Survey Per COMAR 09.13.06.03 Was Not The Purpose Of This Plat.

Mark L. Robel 1/08/20
 Mark L. Robel, Property Line Surveyor No. 339 Date
 Expiration Date: October 4, 2020

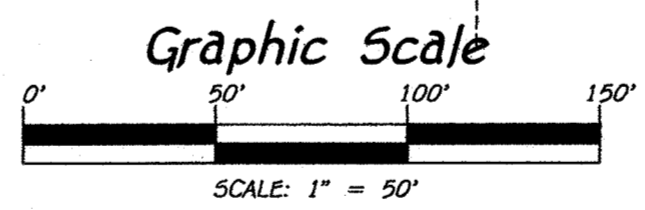
RECORDED AS PLAT NO. 25434 ON 7/17/20
 AMONG THE LAND RECORDS OF HOWARD COUNTY, MARYLAND.

**Plat Of Revision
 Columbia
 Village Of Harper's Choice**

Section 1, Longfellow Area 1, Open Space Lot 105,
 Section 1, Longfellow Area 3, Open Space Lots 1, 23
 And 86, And Section 1, Longfellow Area 4,
 Open Space Lots 1 And 21

(Being A Revision To Open Space Lot 105, As Shown On Plats Entitled "Columbia, Village Of Harper's Choice, Section 1, Longfellow Area 1" Recorded Among The Land Records Of Howard County, Maryland In Plat Book 12 At Pages 26 Thru 90, A Revision To Open Space Lots 1, 23 And 86, As Shown On Plats Entitled "Columbia, Village Of Harper's Choice, Section 1, Longfellow Area 3" Recorded Among The Aforesaid Land Records In Plat Book 13 At Pages 1 Thru 9; And A Revision To Open Space Lots 1 And 21, As Shown On Plats Entitled "Columbia, Village Of Harper's Choice, Section 1, Longfellow Area 4" Recorded Among The Aforesaid Land Records In Plat Book 13 At Pages 28 Thru 38)

Zoned: NT
 Tax Map: 29, Grid: 18, Parcels: 257, 259 And 260
 Fifth Election District - Howard County, Maryland
 Date: November 6, 2019 Scale: 1"=50' Sheet 4 of 6



1818062:Engineering\Drawings\REVISION PLATS\PHASE 1-PLAY 4.dwg, PLAT 4, 1:1

The Requirements § 3-106, The Real Property Article, Annotated Code of Maryland, 1988 Replacement Volume, (As Supplemented) As Far As They Relate To The Making Of This Plat And The Setting Of Markers Have Been Complied With.

Mark L. Robel
 Mark L. Robel, P.L.S. #339
 Date: 1/08/20
 1.8.2020
 Date

Columbia Association, Inc.
 By: Dennis Matthey, Director Of
 Open Space And Facility Services

PERPETUAL EASEMENT AREA FOR STREAM RESTORATION AND MAINTENANCE NO. 1

1	R=430.45'	L=56.52'
2	N88°13'01"E	70.40'
3	S86°29'57"E	284.44'
4	S50°51'29"E	331.66'
5	S31°52'41"W	86.23'
6	N89°03'25"W	40.75'
7	N56°53'52"W	113.68'
8	N64°18'27"W	152.71'
9	S82°37'41"W	141.60'
10	N51°25'56"W	100.43'
11	N52°37'34"W	117.80'

PERPETUAL EASEMENT AREA:
 89,468 SQ. FT. OR 2.054 ACRES±

SHOWN THUS:

PERPETUAL EASEMENT AREA FOR STREAM RESTORATION AND MAINTENANCE NO. 14

1	S51°25'56"E	100.43'
2	S43°29'21"W	158.99'
3	S40°05'28"W	125.56'
4	R=196.11'	L=63.93'
5	CHD=N81°01'58"W	63.75'
6	N43°01'33"E	83.03'
7	N30°07'40"E	235.00'

PERPETUAL EASEMENT AREA:
 20,777 SQ. FT. OR 0.477 ACRES±

SHOWN THUS:

Area Tabulation This Sheet

TOTAL NUMBER OF BUILDABLE LOTS TO BE RECORDED	0
TOTAL NUMBER OF OPEN SPACE LOTS TO BE RECORDED	2
TOTAL NUMBER OF PARCELS TO BE RECORDED	0
TOTAL NUMBER OF LOTS/PARCELS TO BE RECORDED	2
TOTAL AREA OF BUILDABLE LOTS TO BE RECORDED	0.000 Ac.±
TOTAL AREA OF OPEN SPACE LOTS TO BE RECORDED	4.227 Ac.±
TOTAL AREA OF PARCELS TO BE RECORDED	0.000 Ac.±
TOTAL AREA OF LOTS/PARCELS TO BE RECORDED	4.227 Ac.±
TOTAL AREA OF ROADWAY TO BE RECORDED	0.000 Ac.±
TOTAL AREA TO BE RECORDED	4.227 Ac.±

APPROVED: For Public Water And Public Sewerage Systems
 Howard County Health Department

David J. Davis 3/23/20
 Howard County Health Officer u.o. Date

APPROVED: Howard County Department Of Planning And Zoning.

David Edwards 4/24/20
 Chief, Development Engineering Division Date

[Signature] 6/10/2020
 Director Date

Owner's Certificate

We, Columbia Association, Inc., A Maryland Non-Profit Corporation, By Dennis Matthey, Director Of Open Space And Facility Services, Owners Of The Property Shown And Described Hereon, Hereby Adopt This Plat Of Revision; And In Consideration Of The Approval Of This Plat By The Department Of Planning And Zoning Hereby Establish The Perpetual Easement Areas For Stream Restoration And Maintenance Affecting The Property Shown On This Plat Of Revision. Witness My/Our Hand/s this 8th Day Of January, 2020.

By: *[Signature]* 1.8.2020
 Columbia Association, Inc.
 Dennis Matthey, Director Of
 Open Space And Facility Services

Attest: *[Signature]* 1.8.2020
 Columbia Association, Inc.
 Albert Edwards, P.E., Assistant Director
 Of Open Space And Facility Services

Surveyor's Certificate

I Herby Certify To The Best Of My Knowledge That The Final Plat Shown Hereon Is Correct, That It Was Prepared By Me Or Under My Responsible Charge And That I Am A Duly Licensed Property Line Surveyor Under The Laws Of The State Of Maryland; That It Is Part Of The Lands Conveyed By The Howard Research And Development Corporation To The Columbia Park And Recreation Association (The Columbia Park And Recreation Association Changed Its Name To Columbia Association, Inc. By Articles Of Amendment With Name Change Filed On April 15, 1991) By Deed Dated April 30, 1968 And Recorded Among The Land Records Of Howard County, Maryland In Liber 487 At Folio 269; And Being Open Space Lot 105, As Shown On Plats Entitled "Columbia, Village Of Harper's Choice, Section 1, Longfellow Area 1" Recorded Among The Aforesaid Land Records In Plat Book 12 At Pages 86 Thru 90; Open Space Lots 1, 23 And 86, As Shown On Plats Entitled "Columbia, Village Of Harper's Choice, Section 1, Longfellow Area 3" Recorded Among The Aforesaid Land Records In Plat Book 13 At Pages 1 Thru 9; And Open Space Lots 1 And 21, As Shown On Plats Entitled "Columbia, Village Of Harper's Choice, Section 1, Longfellow Area 4" Recorded Among The Aforesaid Land Records In Plat Book 13 At Pages 28 Thru 38; And Verification Of Existing Monuments Or Setting New Monuments Was Not Performed Since A Boundary Survey Per COMAR 09.13.06.03 Was Not The Purpose Of This Plat.

Mark L. Robel 1/08/20
 Mark L. Robel, Property Line Surveyor No. 339 Date
 Expiration Date: October 4, 2020

RECORDED AS PLAT NO. 25433 ON 7/7/20
 AMONG THE LAND RECORDS OF HOWARD COUNTY, MARYLAND.

Plat Of Revision
Columbia
Village Of Harper's Choice
 Section 1, Longfellow Area 1, Open Space Lot 105,
 Section 1, Longfellow Area 3, Open Space Lots 1, 23
 And 86, And Section 1, Longfellow Area 4,
 Open Space Lots 1 And 21

(Being A Revision To Open Space Lot 105, As Shown On Plats Entitled "Columbia, Village Of Harper's Choice, Section 1, Longfellow Area 1" Recorded Among The Land Records Of Howard County, Maryland In Plat Book 12 At Pages 86 Thru 90; A Revision To Open Space Lots 1, 23 And 86, As Shown On Plats Entitled "Columbia, Village Of Harper's Choice, Section 1, Longfellow Area 3" Recorded Among The Aforesaid Land Records In Plat Book 13 At Pages 1 Thru 9; And A Revision To Open Space Lots 1 And 21, As Shown On Plats Entitled "Columbia, Village Of Harper's Choice, Section 1, Longfellow Area 4" Recorded Among The Aforesaid Land Records In Plat Book 13 At Pages 28 Thru 38)

Zoned: NT
 Tax Map: 29, Grid: 18, Parcels: 257, 259 And 260
 Fifth Election District - Howard County, Maryland
 Date: November 6, 2019 Scale: 1"=50' Sheet 3 Of 6

Curve Data Tabulation

Proj-Prof	Radius	Arc Length	Delta	Tangent	Bearing & Distance
141-113	430.45'	91.14'	12°07'59"	45.74'	N 10°44'16" E 90.97'
124-125	60.00'	15.00'	14°19'26"	7.54'	N 32°04'27" E 14.96'
137-138	196.11'	63.93'	18°42'26"	32.30'	N 01°01'26" W 63.75'

For Continuation
 See Sheet
 2 Of 6

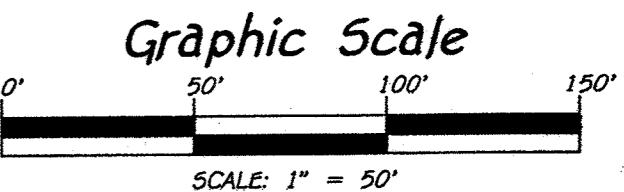
Match Line - See Sheet 4

- Legend**
- Existing 20' Wide Utility And Drainage Easement (P.B. 12, Pg. 90, P.B. 12, Pg. 96 And 98, P.B. 13, Pg. 2, 3, 5 And 6, And P.B. 13, Pg. 30 And 31)
 - Existing Storm Drain Easement (P.B. 12, Pgs. 96 And 98 And P.B. 13, Pg. 29)
 - Perpetual Easement Area For Stream Restoration And Maintenance

Owner

Columbia Association, Inc.
 6310 Hillside Court
 Suite 100
 Columbia, Maryland 21046

Fisher, Collins & Carter, Inc.
 Civil Engineering Consultants & Land Surveyors
 Centennial Square Office Park-10272 Baltimore National Pike
 Ellicott City, Maryland 21042
 (410) 461-2855

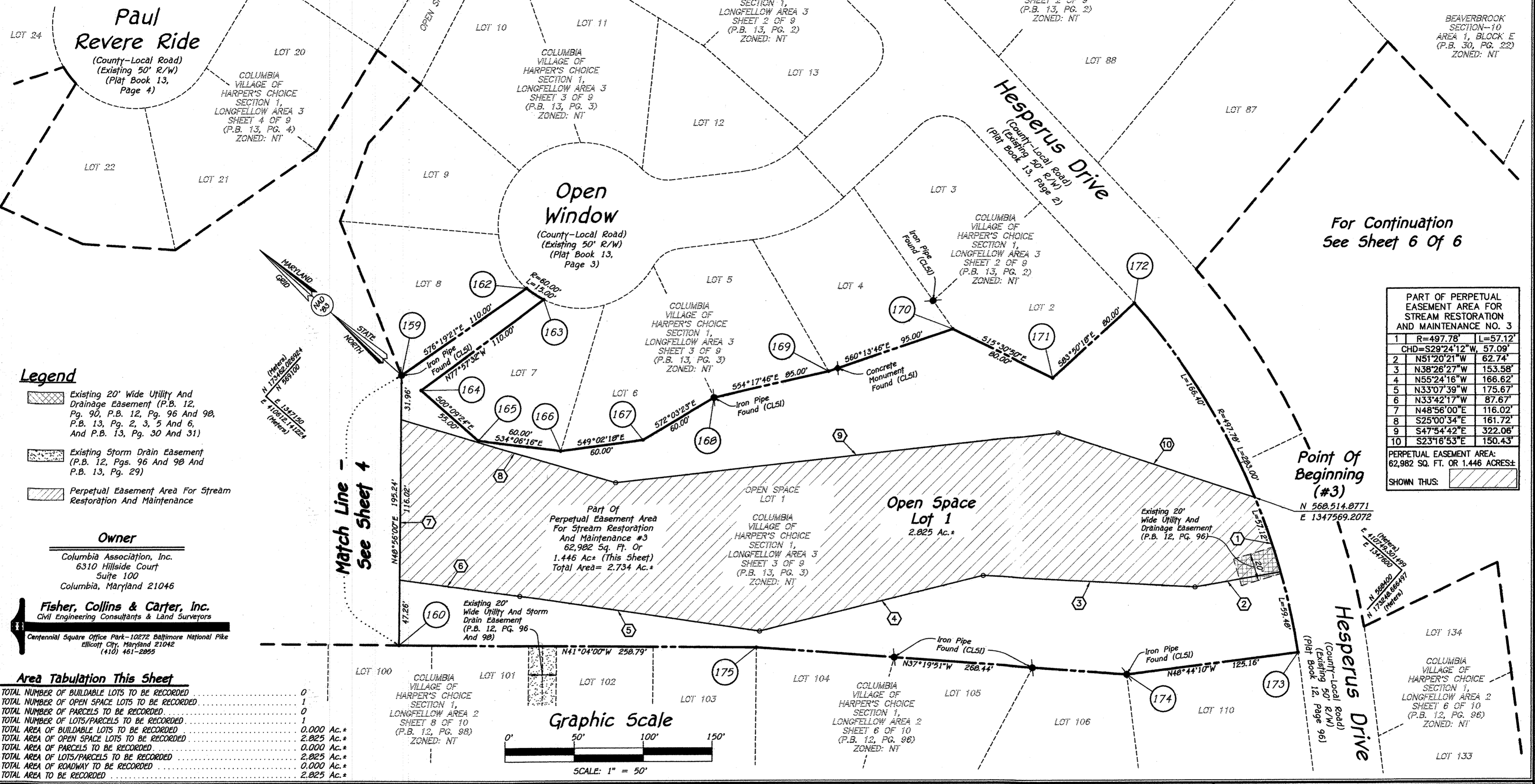


D:\18148062\Engineering\DWG\REVISION PLAT\PHASE 1-PLAT 3.dwg, PLAT 3, 1:1

The Requirements § 3-108, The Real Property Article, Annotated Code of Maryland, 1986 Replacement Volume, (As Supplemented) As Far As They Relate To The Mating Of This Plat And The Setting Of Markers Have Been Complied With.

Mark L. Robel 1/08/20
 Mark L. Robel, P.L.S. #339 Date
 (Property Line Surveyor)
 1.8.2020 Date
 Columbia Association, Inc.
 Dr. Dennis Matthey, Director Of
 Open Space And Facility Services

Curve Data Tabulation					
Proj-Prof	Radius	Arc Length	Delta	Tangent	Bearing & Distance
162-163	60.00'	13.00'	14°19'26"	7.54'	S 07°36'52" E 14.96'
172-173	497.78'	283.00'	32°34'28"	145.44'	S 20°15'00" W 279.20'



For Continuation
See Sheet 6 Of 6

PART OF PERPETUAL EASEMENT AREA FOR STREAM RESTORATION AND MAINTENANCE NO. 3			
1	R=497.78'	L=57.12'	
CHD=S29°24'12" W, 57.09'			
2	N51°20'21" W	62.74'	
3	N38°26'27" W	153.58'	
4	N55°24'16" W	166.62'	
5	N33°07'39" W	175.67'	
6	N33°42'17" W	87.67'	
7	N48°56'00" E	116.02'	
8	S25°00'34" E	161.72'	
9	S47°54'42" E	322.06'	
10	S23°16'53" E	150.43'	
PERPETUAL EASEMENT AREA: 62,982 SQ. FT. OR 1.446 ACRES±			
SHOWN THUS:			

- Legend**
- Existing 20' Wide Utility And Drainage Easement (P.B. 12, Pg. 90, P.B. 12, Pg. 96 And 98, P.B. 13, Pg. 2, 3, 5 And 6, And P.B. 13, Pg. 30 And 31)
 - Existing Storm Drain Easement (P.B. 12, Pgs. 96 And 98 And P.B. 13, Pg. 29)
 - Perpetual Easement Area For Stream Restoration And Maintenance

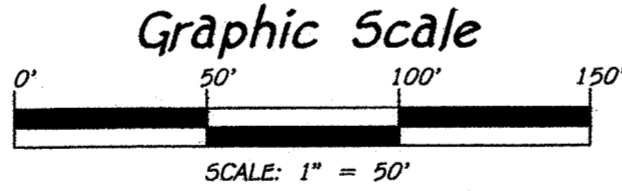
Owner

Columbia Association, Inc.
 6310 Hillside Court
 Suite 100
 Columbia, Maryland 21046

Fisher, Collins & Carter, Inc.
 Civil Engineering Consultants & Land Surveyors
 Centennial Square Office Park-10272 Baltimore National Pike
 Ellicott City, Maryland 21042
 (410) 461-2295

Area Tabulation This Sheet

TOTAL NUMBER OF BUILDABLE LOTS TO BE RECORDED	0
TOTAL NUMBER OF OPEN SPACE LOTS TO BE RECORDED	1
TOTAL NUMBER OF PARCELS TO BE RECORDED	0
TOTAL NUMBER OF LOTS/PARCELS TO BE RECORDED	1
TOTAL AREA OF BUILDABLE LOTS TO BE RECORDED	0.000 Ac.±
TOTAL AREA OF OPEN SPACE LOTS TO BE RECORDED	2.025 Ac.±
TOTAL AREA OF PARCELS TO BE RECORDED	0.000 Ac.±
TOTAL AREA OF LOTS/PARCELS TO BE RECORDED	2.025 Ac.±
TOTAL AREA OF ROADWAY TO BE RECORDED	0.000 Ac.±
TOTAL AREA TO BE RECORDED	2.025 Ac.±



APPROVED: For Public Water And Public Sewerage Systems
 Howard County Health Department

Richard J. Davis 3/23/20
 Howard County Health Officer Date

APPROVED: Howard County Department Of Planning And Zoning

Chief, Development Engineering Division 4.24.20 Date
 Chief, Development Engineering Division Date
Director 6/10/20 Date
 Director Date

Owner's Certificate

We, Columbia Association, Inc., A Maryland Non-Profit Corporation, By Dennis Matthey, Director Of Open Space And Facility Services, Owners Of The Property Shown And Described Hereon, Hereby Adopt This Plat Of Revision; And In Consideration Of The Approval Of This Plat By The Department Of Planning And Zoning Hereby Establish The Perpetual Easement Areas For Stream Restoration And Maintenance Affecting The Property Shown On This Plat Of Revision. Witness My/Our Hand/s This 8th Day Of JANUARY, 2020.

By: *D. Matthey* 1.8.2020 Date
 Columbia Association, Inc.
 Dennis Matthey, Director Of
 Open Space And Facility Services

Attest: *Albert Edwards* 1.8.2020 Date
 Columbia Association, Inc.
 Albert Edwards, P.E., Assistant Director
 Of Open Space And Facility Services

Surveyor's Certificate

I Herby Certify To The Best Of My Knowledge That The Final Plat Shown Hereon Is Correct, That It Was Prepared By Me Or Under My Responsible Charge And That I Am A Duty Licensed Property Line Surveyor Under The Laws Of The State Of Maryland; That It Is Part Of The Lands Conveyed By The Howard Research And Development Corporation To The Columbia Park And Recreation Association (The Columbia Park And Recreation Association Changed Its Name To Columbia Association, Inc. By Articles Of Amendment With Name Change Filed On April 15, 1991) By Deed Dated April 30, 1968 And Recorded Among The Land Records Of Howard County, Maryland In Liber 487 At Folio 269; And Being Open Space Lot 105, As Shown On Plats Entitled "Columbia, Village Of Harper's Choice, Section 1, Longfellow Area 1" Recorded Among The Aforesaid Land Records In Plat Book 12 At Pages 86 Thru 90; Open Space Lots 1, 23 And 26, As Shown On Plats Entitled "Columbia, Village Of Harper's Choice, Section 1, Longfellow Area 3" Recorded Among The Aforesaid Land Records In Plat Book 13 At Pages 1 Thru 9; And Open Space Lots 1 And 21, As Shown On Plats Entitled "Columbia, Village Of Harper's Choice, Section 1, Longfellow Area 4" Recorded Among The Aforesaid Land Records In Plat Book 13 At Pages 28 Thru 38; And Verification Of Existing Monuments Or Setting New Monuments Was Not Performed Since A Boundary Survey Per COMAR 09.13.06.03 Was Not The Purpose Of This Plat.

Mark L. Robel 1/08/20 Date
 Mark L. Robel, Property Line Surveyor No. 339 Date
 Expiration Date: October 4, 2020

RECORDED AS PLAT No. 25435 ON 7/7/20
 AMONG THE LAND RECORDS OF HOWARD COUNTY, MARYLAND.

Plat Of Revision
Columbia
Village Of Harper's Choice
 Section 1, Longfellow Area 1, Open Space Lot 105,
 Section 1, Longfellow Area 3, Open Space Lots 1, 23
 And 26, And Section 1, Longfellow Area 4,
 Open Space Lots 1 And 21

(Being A Revision To Open Space Lot 105, As Shown On Plats Entitled "Columbia, Village Of Harper's Choice, Section 1, Longfellow Area 1" Recorded Among The Land Records Of Howard County, Maryland In Plat Book 12 At Pages 86 Thru 90, A Revision To Open Space Lots 1, 23 And 26, As Shown On Plats Entitled "Columbia, Village Of Harper's Choice, Section 1, Longfellow Area 3" Recorded Among The Aforesaid Land Records In Plat Book 13 At Pages 1 Thru 9; And A Revision To Open Space Lots 1 And 21, As Shown On Plats Entitled "Columbia, Village Of Harper's Choice, Section 1, Longfellow Area 4" Recorded Among The Aforesaid Land Records In Plat Book 13 At Pages 28 Thru 38)

Zoned: NT
 Tax Map: 29, Grid: 18, Parcels: 257, 259 And 260
 Fifth Election District - Howard County, Maryland
 Date: November 6, 2019 Scale: 1"=50' Sheet 5 Of 6

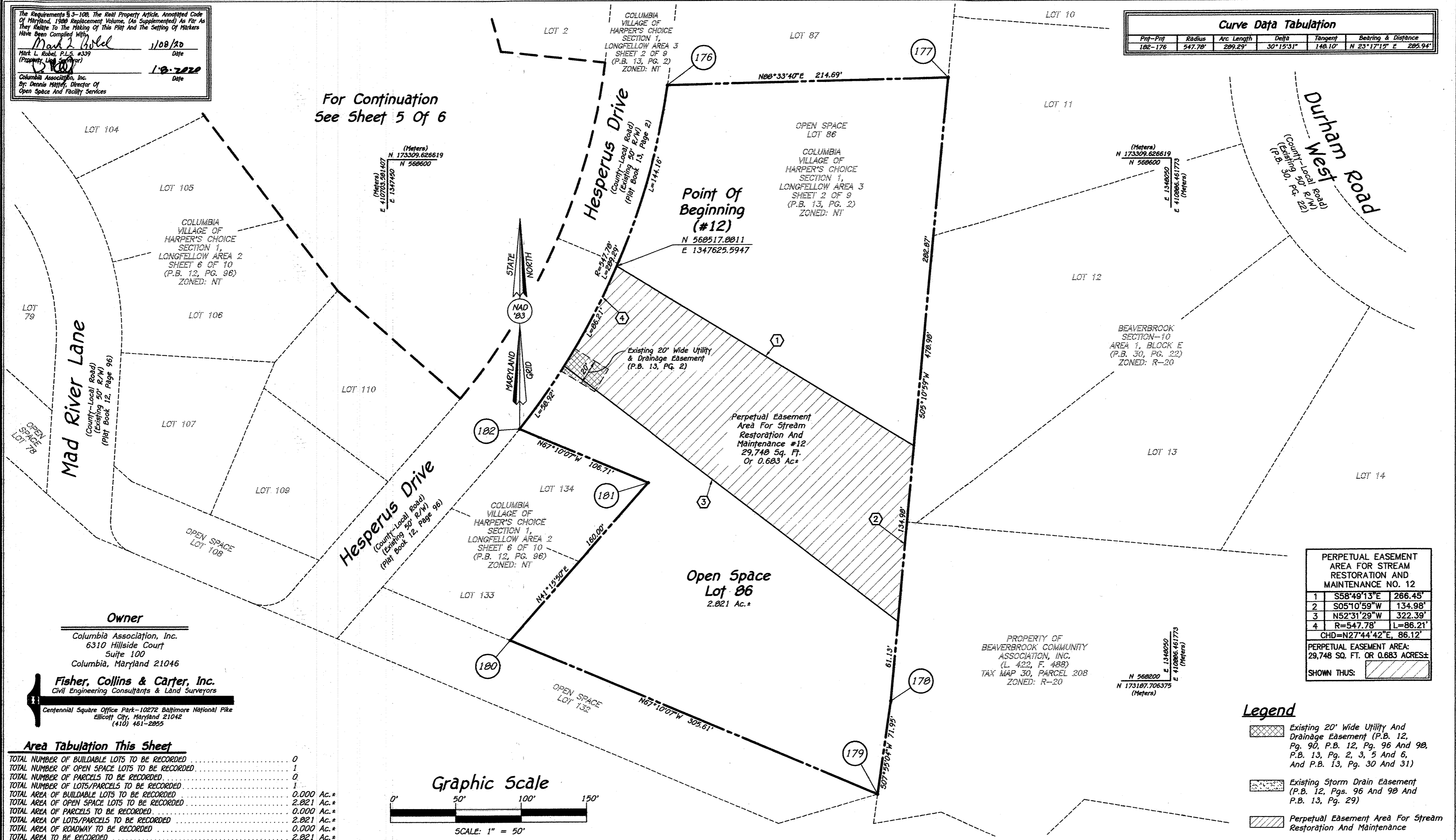
The Requirements § 3-108, The Real Property Article, Annotated Code of Maryland, 1989 Replacement Volume, (As Supplemented) As Far As They Relate To The Making Of This Plat And The Setting Of Markers Have Been Complied With.

Mark L. Robel 1/08/20
Date
Mark L. Robel, P.L.S. #339
(Property Line Surveyor)

Dennis Matthey 1-8-2020
Date
Columbia Association, Inc.
By: Dennis Matthey, Director Of
Open Space And Facility Services

Curve Data Tabulation					
Proj-Prj	Radius	Arc Length	Delta	Tangent	Bearing & Distance
102-176	547.78'	289.23'	30°15'31"	148.10'	N 23°17'15" E 289.94'

For Continuation
See Sheet 5 Of 6



PERPETUAL EASEMENT AREA FOR STREAM RESTORATION AND MAINTENANCE NO. 12		
1	S58°49'13"E	266.45'
2	S05°10'59"W	134.98'
3	N52°31'29"W	322.39'
4	R=547.78'	L=86.21'
CHD=N27°44'42"E, 86.12'		
PERPETUAL EASEMENT AREA: 29,748 SQ. FT. OR 0.683 ACRES±		
SHOWN THUS:		

- Legend**
- Existing 20' Wide Utility And Drainage Easement (P.B. 12, Pg. 90, P.B. 12, Pg. 96 And 98, P.B. 13, Pg. 2, 3, 5 And 6, And P.B. 13, Pg. 30 And 31)
 - Existing Storm Drain Easement (P.B. 12, Pgs. 96 And 98 And P.B. 13, Pg. 29)
 - Perpetual Easement Area For Stream Restoration And Maintenance

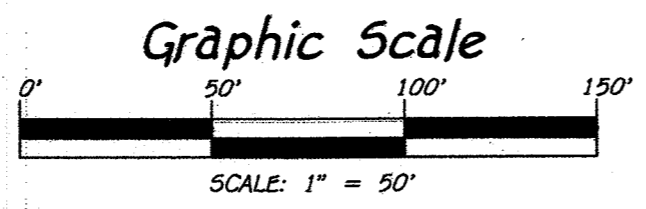
Owner

Columbia Association, Inc.
6310 Hillside Court
Suite 100
Columbia, Maryland 21046

Fisher, Collins & Carter, Inc.
Civil Engineering Consultants & Land Surveyors
Centennial Square Office Park-10272 Baltimore National Pike
Ellicott City, Maryland 21042
(410) 461-2855

Area Tabulation This Sheet

TOTAL NUMBER OF BUILDABLE LOTS TO BE RECORDED	0
TOTAL NUMBER OF OPEN SPACE LOTS TO BE RECORDED	1
TOTAL NUMBER OF PARCELS TO BE RECORDED	0
TOTAL NUMBER OF LOTS/PARCELS TO BE RECORDED	1
TOTAL AREA OF BUILDABLE LOTS TO BE RECORDED	0.000 Ac.±
TOTAL AREA OF OPEN SPACE LOTS TO BE RECORDED	2.821 Ac.±
TOTAL AREA OF PARCELS TO BE RECORDED	0.000 Ac.±
TOTAL AREA OF LOTS/PARCELS TO BE RECORDED	2.821 Ac.±
TOTAL AREA OF ROADWAY TO BE RECORDED	0.000 Ac.±
TOTAL AREA TO BE RECORDED	2.821 Ac.±



APPROVED: For Public Water And Public Sewerage Systems
Howard County Health Department

Robert J. Davis 3/17/20
Howard County Health Officer H.O. Date

APPROVED: Howard County Department Of Planning And Zoning.

Chief 4-24-20
Chief, Development Engineering Division Date

Director 6/10/2020
Director Date

Owner's Certificate

We, Columbia Association, Inc., A Maryland Non-Profit Corporation, By Dennis Matthey, Director Of Open Space And Facility Services, Owners Of The Property Shown And Described Hereon, Hereby Adopt This Plat Of Revision; And In Consideration Of The Approval Of This Plat By The Department Of Planning And Zoning Hereby Establish The Perpetual Easement Areas For Stream Restoration And Maintenance Affecting The Property Shown On This Plat Of Revision. Witness My/Our Hand/s This 8th Day Of JANUARY, 2019.

By: *D. Matthey* 1-8-2020
Columbia Association, Inc.
Dennis Matthey, Director Of
Open Space And Facility Services

Attest: *Albert Edwards* 1-8-2020
Columbia Association, Inc.
Albert Edwards, P.E., Assistant Director
Of Open Space And Facility Services

Surveyor's Certificate

I Herby Certify To The Best Of My Knowledge That The Final Plat Shown Hereon Is Correct, That It Was Prepared By Me Or Under My Responsible Charge And That I Am A Duly Licensed Property Line Surveyor Under The Laws Of The State Of Maryland; That It Is Part Of The Lands Conveyed By The Howard Research And Development Corporation To The Columbia Park And Recreation Association (The Columbia Park And Recreation Association Changed Its Name To Columbia Association, Inc. By Articles Of Amendment With Name Change Filed On April 15, 1991) By Deed Dated April 30, 1968 And Recorded Among The Land Records Of Howard County, Maryland In Liber 487, At Folio 269; And Being Open Space Lot 105, As Shown On Plats Entitled "Columbia, Village Of Harper's Choice, Section 1, Longfellow Area 1" Recorded Among The Aforesaid Land Records In Plat Book 12 At Pages 86 Thru 90; Open Space Lots 1, 23 And 86, As Shown On Plats Entitled "Columbia, Village Of Harper's Choice, Section 1, Longfellow Area 3" Recorded Among The Aforesaid Land Records In Plat Book 13 At Pages 1 Thru 9; And Open Space Lots 1 And 21, As Shown On Plats Entitled "Columbia, Village Of Harper's Choice, Section 1, Longfellow Area 4" Recorded Among The Aforesaid Land Records In Plat Book 13 At Pages 20 Thru 30; And Verification Of Existing Monuments Or Setting New Monuments Was Not Performed Since A Boundary Survey Per COMAR 09.13.06.03 Was Not The Purpose Of This Plat.

Mark L. Robel 1/08/20
Mark L. Robel, Property Line Surveyor No. 339 Date
Expiration Date: October 4, 2020

RECORDED AS PLAT NO. 25436 ON 7/7/20
AMONG THE LAND RECORDS OF HOWARD COUNTY, MARYLAND.

Plat Of Revision
Columbia
Village Of Harper's Choice
Section 1, Longfellow Area 1, Open Space Lot 105,
Section 1, Longfellow Area 3, Open Space Lots 1, 23
And 86, And Section 1, Longfellow Area 4,
Open Space Lots 1 And 21

(Being A Revision To Open Space Lot 105, As Shown On Plats Entitled "Columbia, Village Of Harper's Choice, Section 1, Longfellow Area 1" Recorded Among The Land Records Of Howard County, Maryland In Plat Book 12, At Pages 86 Thru 90, A Revision To Open Space Lots 1, 23 And 86, As Shown On Plats Entitled "Columbia, Village Of Harper's Choice, Section 1, Longfellow Area 3" Recorded Among The Aforesaid Land Records In Plat Book 13 At Pages 1 Thru 9; And A Revision To Open Space Lots 1 And 21, As Shown On Plats Entitled "Columbia, Village Of Harper's Choice, Section 1, Longfellow Area 4" Recorded Among The Aforesaid Land Records In Plat Book 13 At Pages 20 Thru 30)

Zoned: NT
Tax Map: 29, Grid: 18, Parcels: 257, 259 And 260
Fifth Election District - Howard County, Maryland
Date: September 9, 2019 Scale: 1"=50' Sheet 6 Of 6