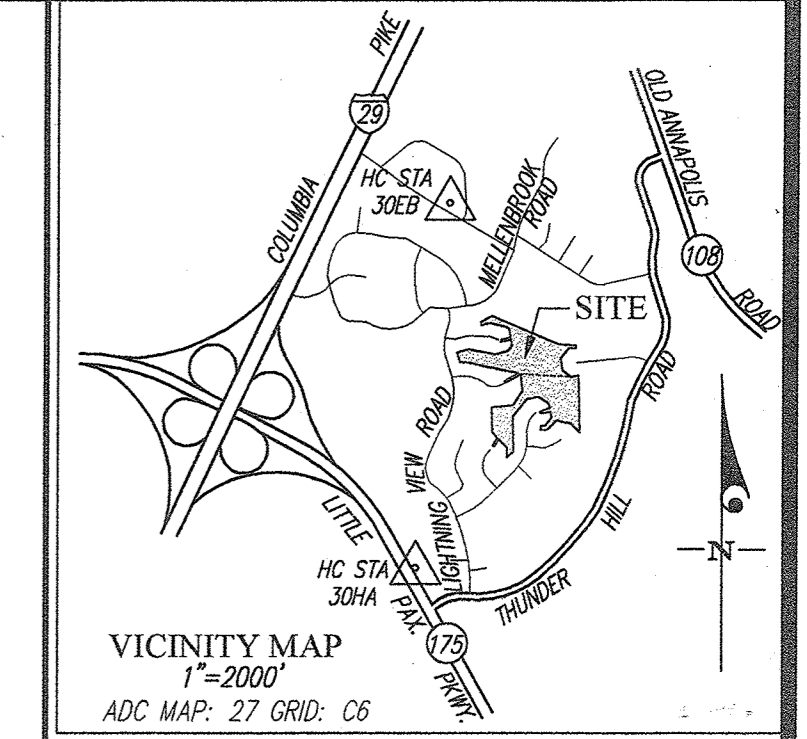
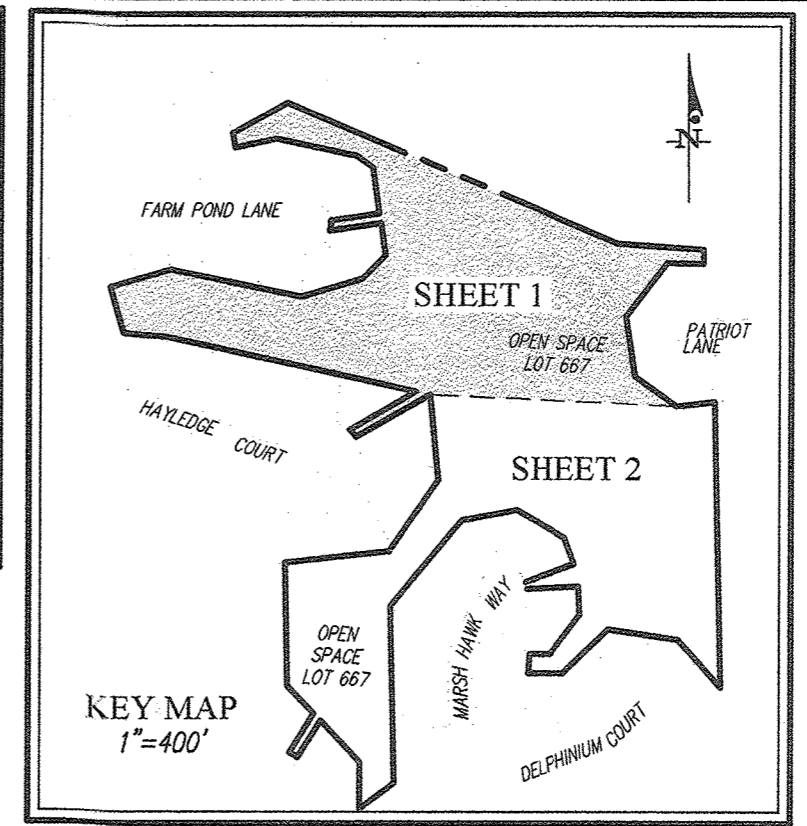


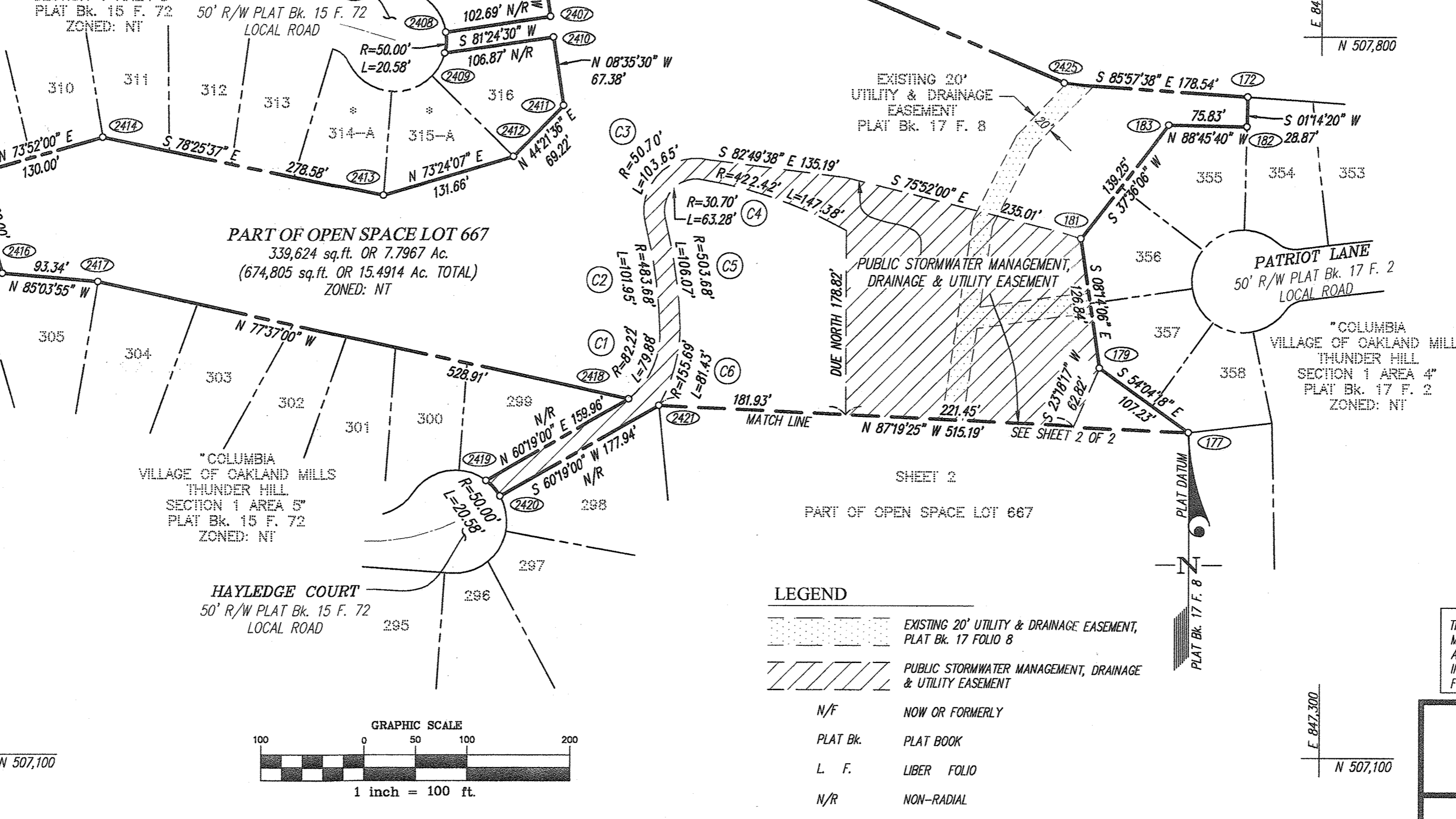
COORDINATE TABLE THIS SHEET					
POINT	NORTHING	EASTING	POINT	NORTHING	EASTING
172	507,741.69	847,227.60	2409	507,781.65	846,446.66
177	507,415.69	847,171.20	2410	507,797.62	846,552.33
179	507,478.61	847,084.37	2411	507,730.99	846,562.40
181	507,604.14	847,066.20	2412	507,681.50	846,514.00
182	507,712.83	847,226.98	2413	507,643.89	846,387.83
183	507,714.47	847,151.16	2414	507,699.78	846,114.90
2401	508,048.32	846,357.53	2415	507,663.66	845,990.02
2402	507,984.63	846,243.64	2416	507,567.59	846,017.81
2403	507,954.07	846,248.57	2417	507,559.57	846,110.80
2404	507,972.55	846,335.99	2418	507,446.14	846,627.41
2405	507,936.73	846,502.63	2419	507,366.93	846,488.44
2406	507,913.07	846,534.89	2420	507,351.62	846,501.97
2407	507,817.39	846,549.34	2421	507,439.74	846,656.56
2408	507,802.05	846,447.80	2425	507,754.26	847,049.50

CURVE TABULATION THIS SHEET						
CURVE	RADIUS	LENGTH	TANGENT	CHORD	BEARING	DELTA
2420-2419	50.00'	20.58'	10.44'	20.45'	N 41°28'21" W	23°34'43"
2409-2408	50.00'	20.58'	10.44'	20.45'	N 03°11'51" E	23°34'43"

PUBLIC STORMWATER MANAGEMENT, DRAINAGE & UTILITY EASEMENT CURVE TABLE						
CURVE	RADIUS	LENGTH	TANGENT	CHORD	BEARING	DELTA
C1	82.22'	79.88'	43.41'	76.78'	N 22°48'36" E	55°40'08"
C2	483.68'	101.95'	51.16'	101.76'	N 08°14'34" W	12°04'36"
C3	50.70'	103.65'	82.95'	86.52'	N 45°22'23" E	117°07'51"
C4	30.70'	63.28'	51.19'	52.66'	S 46°09'44" W	118°05'42"
C5	503.68'	106.07'	53.23'	105.88'	S 08°13'25" E	12°03'59"
C6	155.69'	81.43'	41.67'	80.50'	S 14°49'40" W	29°57'56"



* LOTS 314-A & 315-A:
"COLUMBIA REVISED PLAT VILLAGE OF OAKLAND MILLS THUNDER HILL LOTS 314 & 315 SECTION 1 AREA 5" PLAT Bk. 17 F. 57 ZONED: NT



OWNER:
COLUMBIA ASSOCIATION, INC.
6310 HILLSIDE COURT
SUITE #100
COLUMBIA, MARYLAND 21046

TABULATION OF FINAL PLAT - THIS SHEET

- TOTAL NUMBER OF LOTS AND PARCELS TO BE RECORDED:
BUILDABLE: 0
NON-BUILDABLE: 0
OPEN SPACE: P/O 1
- TOTAL AREA OF LOTS AND/OR PARCELS:
BUILDABLE: 0 Ac.
NON-BUILDABLE: 0 Ac.
OPEN SPACE: 7.7967 Ac.
- TOTAL AREA OF ROADWAY TO BE RECORDED: 0 Ac.
- TOTAL AREA OF SUBDIVISION TO BE RECORDED: 7.7967 Ac.

TABULATION OF FINAL PLAT - ALL SHEETS

- TOTAL NUMBER OF LOTS AND PARCELS TO BE RECORDED:
BUILDABLE: 0
NON-BUILDABLE: 0
OPEN SPACE: 1
- TOTAL AREA OF LOTS AND/OR PARCELS:
BUILDABLE: 0 Ac.
NON-BUILDABLE: 0 Ac.
OPEN SPACE: 15.4914 Ac.
- TOTAL AREA OF ROADWAY TO BE RECORDED: 0 Ac.
- TOTAL AREA OF SUBDIVISION TO BE RECORDED: 15.4914 Ac.

APPROVED: FOR PUBLIC WATER & PUBLIC SEWERAGE SYSTEMS IN CONFORMANCE WITH THE MASTER PLAN OF WATER & SEWERAGE FOR HOWARD COUNTY, MD.

APPROVED: HOWARD COUNTY DEPARTMENT OF PLANNING & ZONING

OWNERS' DEDICATION

COLUMBIA ASSOCIATION, INC., A MARYLAND NON-PROFIT CORPORATION, (FORMERLY COLUMBIA PARK AND RECREATION ASSOCIATION, INC.), OWNER OF THE PROPERTY SHOWN AND DESCRIBED HEREON, HEREBY ADOPTS THIS PLAN OF SUBDIVISION; AND IN CONSIDERATION OF THE APPROVAL OF THIS PLAN BY THE DEPARTMENT OF PLANNING AND ZONING ESTABLISHES THE MINIMUM BUILDING RESTRICTION LINES. ALL EASEMENTS AND RIGHTS-OF-WAY AFFECTING THE PROPERTY ARE INCLUDED IN THIS PLAN OF SUBDIVISION. THE REQUIREMENTS OF SECTION 3-108, THE REAL PROPERTY ARTICLE, ANNOTATED CODE OF MARYLAND, 1996 REPLACEMENT VOLUME, (AS SUPPLEMENTED) AS FAR AS THEY RELATE TO THE MAKING OF THIS PLAN AND THE SETTING OF MARKERS, HAVE BEEN COMPLIED WITH.

WITNESS OUR HANDS THIS 7th DAY OF August 2018

COLUMBIA ASSOCIATION, INC.
(FORMERLY KNOWN AS COLUMBIA PARK AND RECREATION ASSOCIATION, INC.)

ATTEST: *Albert Edwards, P.E.*
ALBERT EDWARDS, P.E.
ASSISTANT DIRECTOR OF OPEN SPACE AND FACILITY SERVICES

SURVEYOR'S CERTIFICATE

I HEREBY CERTIFY TO THE BEST OF MY KNOWLEDGE, INFORMATION AND BELIEF, THAT THE PLAT OF REVISION SHOWN HEREON IS CORRECT; THAT IT IS A REVISION OF OPEN SPACE LOT 667 AS SHOWN ON A PLAT ENTITLED "COLUMBIA, VILLAGE OF OAKLAND MILLS, THUNDER HILL, SECTION 1 AREA 4" AND RECORDED AS PLAT BOOK 17 FOLIO 8. ALSO BEING PART OF THE LAND CONVEYED FROM THE HOWARD RESEARCH AND DEVELOPMENT CORPORATION TO THE COLUMBIA PARK AND RECREATION ASSOCIATION, INC. (NOW KNOWN AS COLUMBIA ASSOCIATION, INC.), BY A DEED DATED SEPTEMBER 20, 1971 AND RECORDED IN LIBER 575 AT FOLIO 340, ALL AMONG THE LAND RECORDS OF HOWARD COUNTY, MARYLAND AND THAT ALL MONUMENTS ARE IN PLACE OR WILL BE IN PLACE PRIOR TO ACCEPTANCE OF THE STREETS IN THE SUBDIVISION BY HOWARD COUNTY, IN ACCORDANCE WITH THE ANNOTATED CODE OF MARYLAND, AS AMENDED.

THE REQUIREMENTS OF SECTION 3-108, THE REAL PROPERTY ARTICLE, ANNOTATED CODE OF MARYLAND, 1996 REPLACEMENT VOLUME, (AS SUPPLEMENTED) AS FAR AS THEY RELATE TO THE MAKING OF THIS PLAN AND THE SETTING OF MARKERS, HAVE BEEN COMPLIED WITH.

William E. Grueninger III
WILLIAM E. GRUENINGER III
PROFESSIONAL LAND SURVEYOR
MARYLAND REGISTRATION NO. 21542 (EXP./RENEWAL 12/21/2019)

THE SOLE PURPOSE OF THIS PLAT IS TO CREATE A PUBLIC STORMWATER MANAGEMENT, DRAINAGE & UTILITY EASEMENT IN, THROUGH, OVER AND ACROSS OPEN SPACE LOT 667. THE REST OF THE PROPERTY BOUNDARY INFORMATION FOR OPEN SPACE LOT 667 IS AS SHOWN ON PLAT BOOK 17 FOLIO 8.

RECORDED AS PLAT NUMBER 24969 ON 3/15/19, AMONG THE LAND RECORDS OF HOWARD COUNTY, MARYLAND

PLAT OF REVISION

COLUMBIA VILLAGE OF OAKLAND MILLS THUNDER HILL SECTION 1 AREA 4

OPEN SPACE LOT 667

(A REVISION TO OPEN SPACE LOT 667, COLUMBIA, VILLAGE OF OAKLAND MILLS, THUNDER HILL, SECTION 1 AREA 4, PLAT BOOK 17 FOLIO 8)

FDP-58-A 6TH ELECTION DISTRICT SCALE: 1"=100'

ZONE-NT SHEET 1 OF 2

TM 30, GRID 16, P/O PARCEL 273 HOWARD COUNTY, MARYLAND JULY 2018

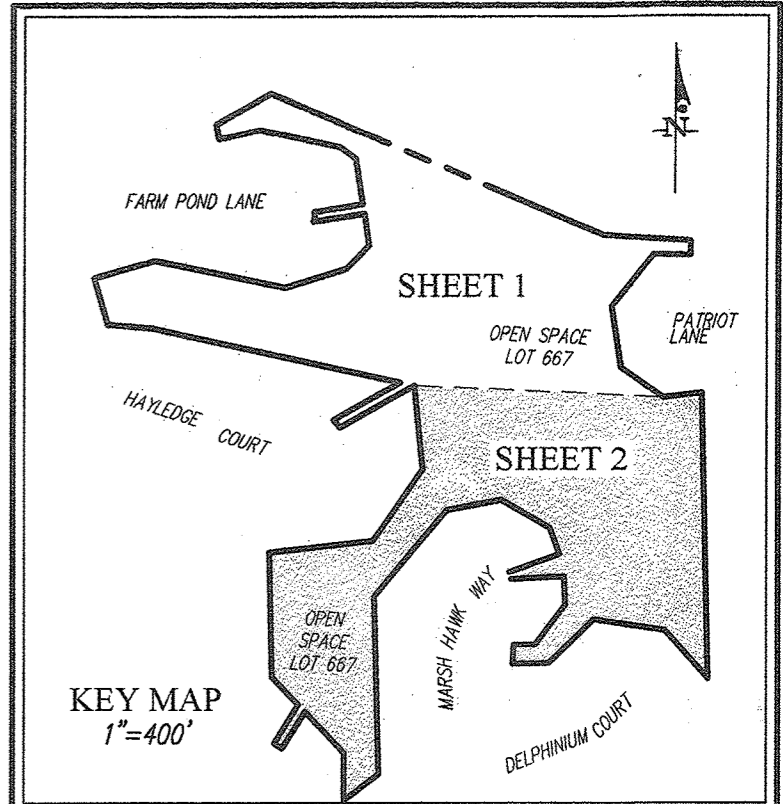
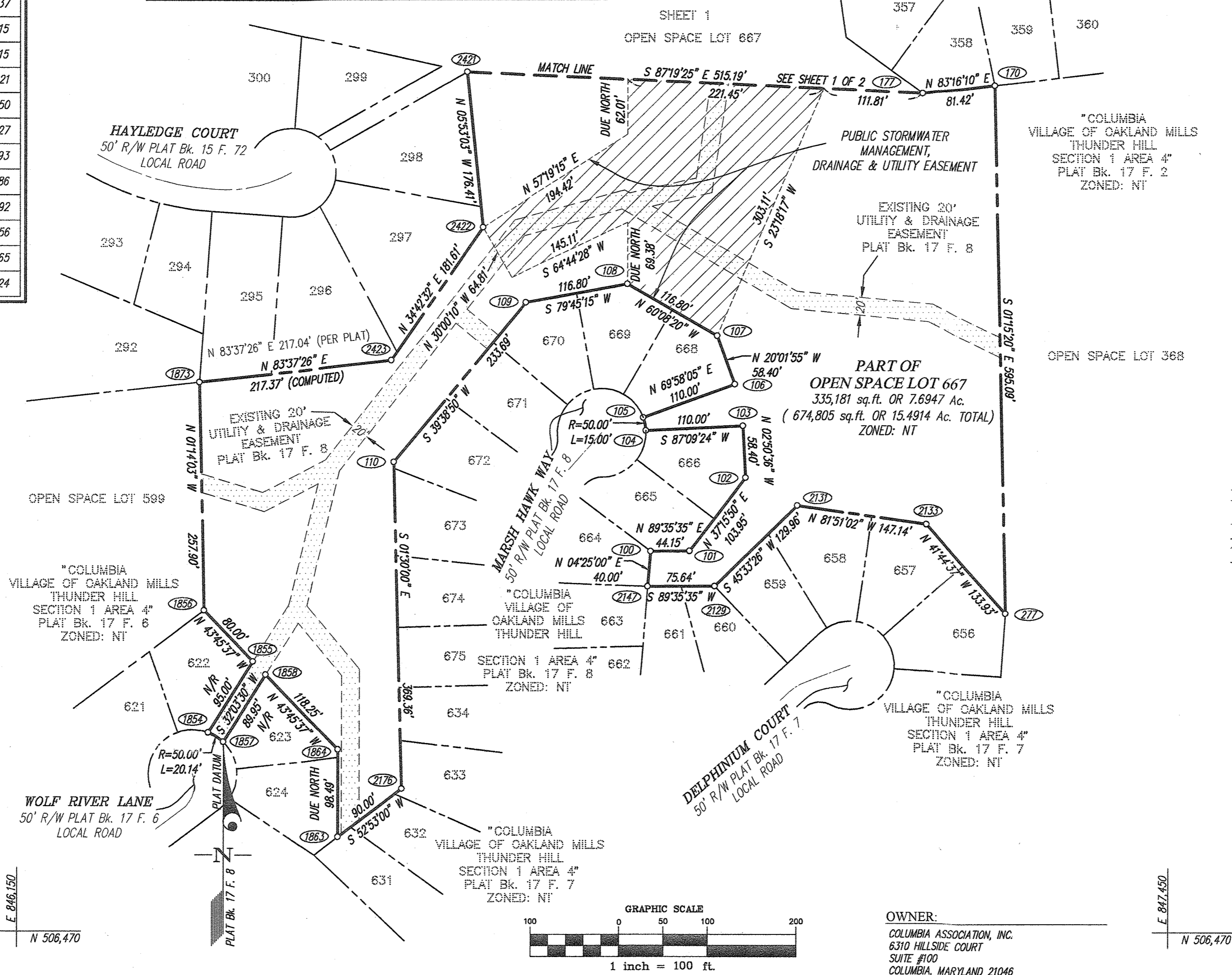
GLW PLANNING [ENGINEERING] SURVEYING

3909 NATIONAL DRIVE SUITE 250 BURTONSVILLE, MD 20866 301-421-4024 GLWPA.COM

DRAWN BY: AR CHECK BY: [Signature]

COORDINATE TABLE THIS SHEET					
POINT	NORTHING	EASTING	POINT	NORTHING	EASTING
100	506,899.41	846,864.92	1855	506,775.21	846,416.10
101	506,899.73	846,909.07	1856	506,832.99	846,360.77
102	506,982.46	846,972.01	1857	506,684.08	846,382.63
103	507,040.78	846,969.11	1858	506,760.31	846,430.37
104	507,035.33	846,859.25	1863	506,576.42	846,512.15
105	507,049.97	846,856.25	1864	506,674.91	846,512.15
106	507,087.85	846,959.59	1873	507,090.83	846,355.21
107	507,142.52	846,939.59	2129	506,860.09	846,937.50
108	507,200.68	846,838.29	2131	506,951.08	847,030.27
109	507,179.90	846,723.36	2133	506,930.22	847,175.93
110	506,999.96	846,574.25	2147	506,859.55	846,861.86
170	507,425.23	847,252.06	2176	506,630.73	846,583.92
177	507,415.69	847,171.20	2421	507,439.74	846,656.56
277	506,830.29	847,265.10	2422	507,264.26	846,674.65
1854	506,694.69	846,365.68	2423	507,114.97	846,571.24

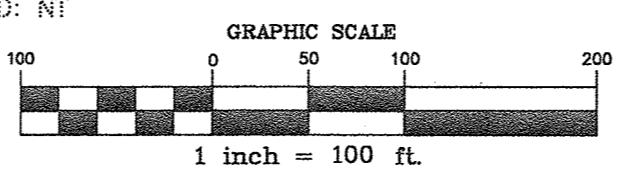
CURVE TABULATION THIS SHEET							
CURVE	RADIUS	LENGTH	TANGENT	CHORD	BEARING	DELTA	
1857-1854	50.00'	20.14'	10.21'	20.00'	N 57°56'30" W	23°04'27"	
104-105	50.00'	15.00'	7.56'	14.95'	N 11°34'55" W	17°11'36"	



- LEGEND**
- EXISTING 20' UTILITY & DRAINAGE EASEMENT, PLAT Bk. 17 FOLIO B
 - PUBLIC STORMWATER MANAGEMENT, DRAINAGE & UTILITY EASEMENT
 - N/F NOW OR FORMERLY
 - PLAT Bk. PLAT BOOK
 - L. F. LIBER FOLIO
 - N/R NON-RADIAL

TABULATION OF FINAL PLAT - THIS SHEET

- TOTAL NUMBER OF LOTS AND PARCELS TO BE RECORDED:
 - BUILDABLE: 0
 - NON-BUILDABLE: 0
 - OPEN SPACE: P/O 1
- TOTAL AREA OF LOTS AND/OR PARCELS:
 - BUILDABLE: 0 Ac.
 - NON-BUILDABLE: 0 Ac.
 - OPEN SPACE: 7.6947 Ac.
- TOTAL AREA OF ROADWAY TO BE RECORDED: 0 Ac.
- TOTAL AREA OF SUBDIVISION TO BE RECORDED: 7.6947 Ac.



OWNER:
COLUMBIA ASSOCIATION, INC.
6310 HILLSIDE COURT
SUITE #100
COLUMBIA, MARYLAND 21046

APPROVED: FOR PUBLIC WATER & PUBLIC SEWERAGE SYSTEMS IN CONFORMANCE WITH THE MASTER PLAN OF WATER & SEWERAGE FOR HOWARD COUNTY, MD.

Madison for Maureen Roszman 2/28/2019
COUNTY HEALTH OFFICER DATE

APPROVED: HOWARD COUNTY DEPARTMENT OF PLANNING & ZONING

Chad Chamber 3.1.19
CHIEF, DEVELOPMENT ENGINEERING DIVISION DATE

Vest 3.13.19
DIRECTOR DATE

OWNERS' DEDICATION

COLUMBIA ASSOCIATION, INC., A MARYLAND NON-PROFIT CORPORATION, (FORMERLY COLUMBIA PARK AND RECREATION ASSOCIATION, INC.), OWNER OF THE PROPERTY SHOWN AND DESCRIBED HEREON, HEREBY ADOPTS THIS PLAN OF SUBDIVISION; AND IN CONSIDERATION OF THE APPROVAL OF THIS PLAT BY THE DEPARTMENT OF PLANNING AND ZONING ESTABLISHES THE MINIMUM BUILDING RESTRICTION LINES. ALL EASEMENTS AND RIGHTS-OF-WAY AFFECTING THE PROPERTY ARE INCLUDED IN THIS PLAN OF SUBDIVISION. THE REQUIREMENTS OF SECTION 3-108, THE REAL PROPERTY ARTICLE, ANNOTATED CODE OF MARYLAND, 1996 REPLACEMENT VOLUME, (AS SUPPLEMENTED) AS FAR AS THEY RELATE TO THE MAKING OF THIS PLAT AND THE SETTING OF MARKERS, HAVE BEEN COMPLIED WITH.

WITNESS OUR HANDS THIS 7th DAY OF August, 2019

COLUMBIA ASSOCIATION, INC.
(FORMERLY KNOWN AS COLUMBIA PARK AND RECREATION ASSOCIATION, INC.)

BY: *D. Mattie*
DENNIS MATTIE,
DIRECTOR OF OPEN SPACE AND FACILITY SERVICES

ATTEST: *Albert Edwards*
ALBERT EDWARDS, P.E.,
ASSISTANT DIRECTOR OF OPEN SPACE AND FACILITY SERVICES

SURVEYOR'S CERTIFICATE

I HEREBY CERTIFY TO THE BEST OF MY KNOWLEDGE, INFORMATION AND BELIEF, THAT THE PLAT OF REVISION SHOWN HEREON IS CORRECT; THAT IT IS A REVISION OF OPEN SPACE LOT 667 AS SHOWN ON A PLAT ENTITLED "COLUMBIA, VILLAGE OF OAKLAND MILLS, THUNDER HILL, SECTION 1 AREA 4" AND RECORDED AS PLAT BOOK 17 FOLIO B. ALSO BEING PART OF THE LAND CONVEYED FROM THE HOWARD RESEARCH AND DEVELOPMENT CORPORATION TO THE COLUMBIA PARK AND RECREATION ASSOCIATION, INC. (NOW KNOWN AS COLUMBIA ASSOCIATION, INC.), BY A DEED DATED SEPTEMBER 20, 1971 AND RECORDED IN LIBER 575 AT FOLIO 340, ALL AMONG THE LAND RECORDS OF HOWARD COUNTY, MARYLAND AND THAT ALL MONUMENTS ARE IN PLACE OR WILL BE IN PLACE PRIOR TO ACCEPTANCE OF THE STREETS IN THE SUBDIVISION BY HOWARD COUNTY, IN ACCORDANCE WITH THE ANNOTATED CODE OF MARYLAND, AS AMENDED.

THE REQUIREMENTS OF SECTION 3-108, THE REAL PROPERTY ARTICLE, ANNOTATED CODE OF MARYLAND, 1996 REPLACEMENT VOLUME, (AS SUPPLEMENTED) AS FAR AS THEY RELATE TO THE MAKING OF THIS PLAT AND THE SETTING OF MARKERS, HAVE BEEN COMPLIED WITH.

William E. Grueninger III
WILLIAM E. GRUENINGER III
PROFESSIONAL LAND SURVEYOR
MARYLAND REGISTRATION NO. 21542 (EXP. 12/21/2019)

08/07/2019

RECORDED AS PLAT NUMBER 24970 ON 311519, AMONG THE LAND RECORDS OF HOWARD COUNTY, MARYLAND

PLAT OF REVISION

COLUMBIA VILLAGE OF OAKLAND MILLS THUNDER HILL SECTION 1 AREA 4

OPEN SPACE LOT 667

(A REVISION TO OPEN SPACE LOT 667, COLUMBIA, VILLAGE OF OAKLAND MILLS, THUNDER HILL, SECTION 1 AREA 4, PLAT BOOK 17 FOLIO B)

FDP-58-A TM 30, GRID 16, P/O PARCEL 273
6TH ELECTION DISTRICT ZONE-NT HOWARD COUNTY, MARYLAND
SCALE: 1"=100' SHEET 2 OF 2 JULY 2018

3909 NATIONAL DRIVE SUITE 250 BURTONSVILLE, MD 20886 301-421-4024 GLWPA.COM

DRAWN BY: AR
CHECK BY: WEG

S:\Survey Drawings\18031\PLATS\REVISION PLATS\REV PLAT 05 667 SHT2.dwg, PLOTTED: 8/7/2018 9:45 AM, LAST SAVED: 7/26/2018 5:02 PM, PLOTTED BY: Adam Rock