

TABULATION CHART FOR FOREST CONSERVATION EASEMENT AREA THIS SHEET

AREA	SQ. FEET	ACRES
D-1	67,873	1.558
D-2	27,000	0.620
E	69,999	1.607
F	16,422	0.377
H*	13,870	0.318
I*	3,047	0.070
TOTAL	198,211	4.550

CURVE DATA

CURVE	RADIUS	LENGTH	TANGENT	BEARING	CHORD	DELTA
2-3	2251.83'	765.14'	386.29'	N 85°05'09" E	761.47'	19°28'06"
4-5	1016.27'	598.53'	308.23'	S 68°18'20" E	589.92'	33°44'40"
6-7	1242.37'	269.86'	135.46'	S 57°39'22" E	269.33'	12°26'44"

NOTE:

* AREAS H AND I NOT COMBINED DUE TO FLOODPLAIN BETWEEN, HOWEVER INCLUSION OF FLOODPLAIN FOREST ALLOWS THESE AREAS TO MEET THE 10,000 SQUARE FEET MINIMUM FOR RETENTION.

** AREAS PER PLAT NO. 19050

COORDINATE TABLE

NO.	NORTHING	EASTING
2	564285.252	1345255.519
3	564350.482	1346014.186
4	564328.360	1346276.408
5	564110.292	1346824.544
6	563942.177	1347035.388
7	563798.085	1347262.932
13	563640.935	1346563.252
14	563616.849	1346867.611
15	563142.646	1346385.948
16	563033.741	1346355.645
19	564063.623	1346438.928
20	564073.818	1346318.918
21	562082.553	1346723.066

FOREST CONSERVATION EASEMENT AREA 'D1' LINE TABLE

L1	S33°25'16"E	427.74'
L2	N88°40'39"W	79.18'
L3	S88°36'01"W	53.54'
L4	N51°00'31"W	106.42'
L5	N54°09'49"W	234.96'
L6	N30°31'41"E	158.43'
L7	N50°06'01"E	59.59'
C1	Chd. S62°42'56"E	
	L=49.60'	
	R=1242.37'	
	Arc=49.61'	

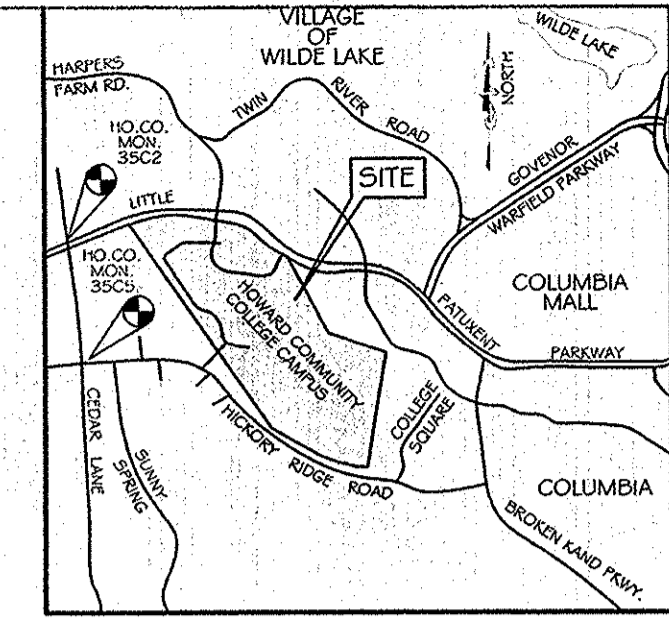
FOREST CONSERVATION EASEMENT AREA 'D2' LINE TABLE

L8	S33°25'16"E	252.63'
L9	NG6°31'05"W	79.86'
L10	S19°15'33"E	101.32'
L11	N57°59'27"W	124.56'
L12	N28°49'50"W	125.77'
L13	N07°00'04"W	87.36'
L14	N61°22'30"E	78.49'

TABULATION CHART FOR FOREST CONSERVATION EASEMENT AREA THIS SUBMISSION

AREA	SQ. FEET	ACRES
A-1**	51,811	1.189
B-1**	100,447	2.306
C-1**	464,270	10.658
D-1	67,873	1.558
D-2	27,000	0.620
E	69,999	1.607
F	16,422	0.377
H*	13,870	0.318
I*	3,047	0.070
J-1**	103,497	2.376
TOTAL	918,236	21.079
EXISTING TOTAL	928,629	21.318
AREA TO BE ABANDONED BY THIS PLAT	10,393	0.239
REMAINING TOTAL	918,236	21.079

THIS PLAT IS NOT A COMPLETE SURVEY OF BULK PARCEL B BUT IS TO ONLY SHOW THE ABANDONMENT OF A PORTION OF FOREST CONSERVATION D. FOR A COMPLETE SURVEY DESCRIPTION OF BULK PARCEL B SEE F-07-010, PLAT NOS. 19049 TO 19051.



VICINITY MAP
SCALE: 1" = 2000'

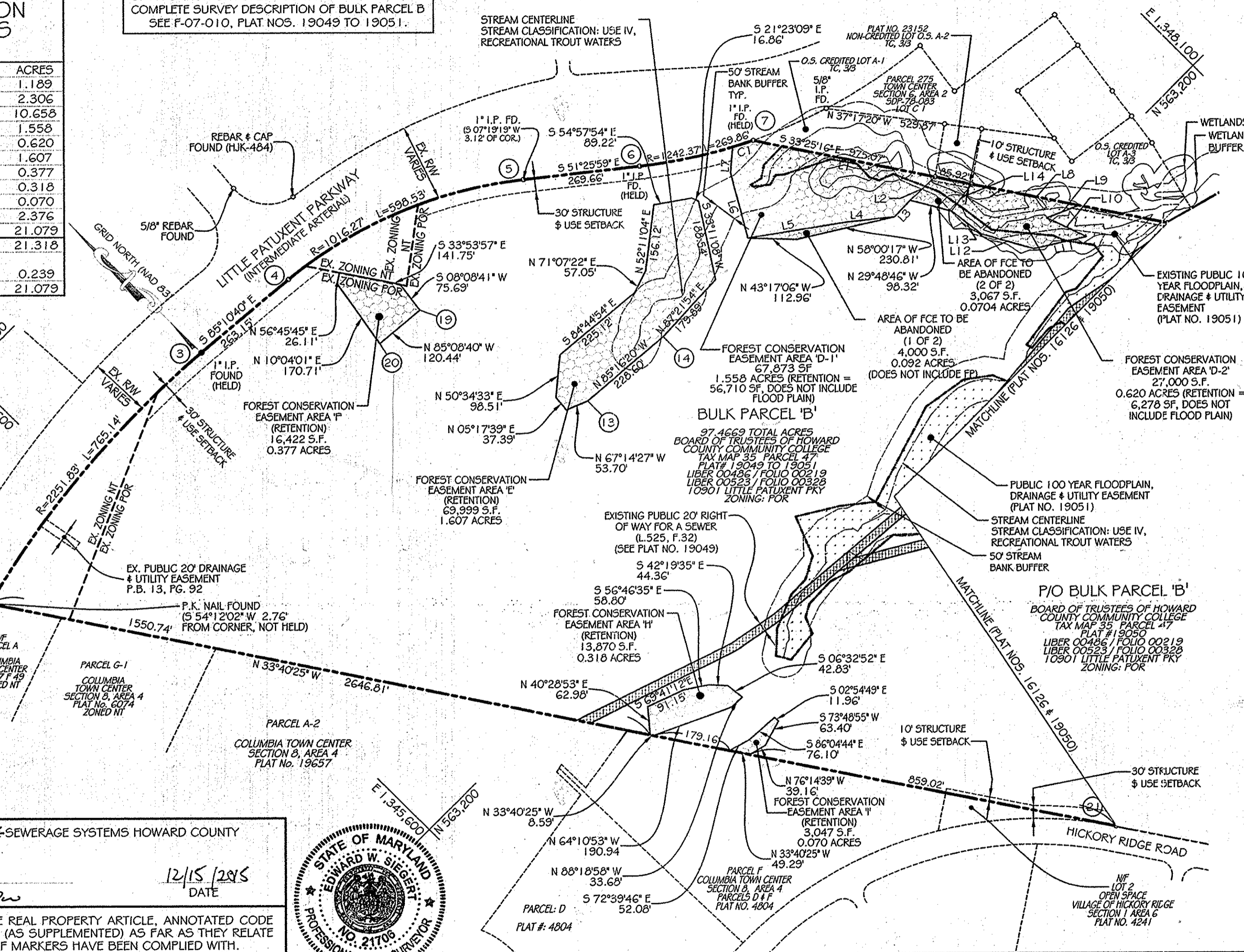
GENERAL NOTES

- SUBJECT PROPERTY ZONED FOR AND NT PER THE 10/18/93 COMPREHENSIVE ZONING PLAN.
- COORDINATES BASED ON NAD 83 MARYLAND COORDINATES SYSTEM AS PROJECTED BY HOWARD COUNTY GEODETIC CONTROL STATIONS NO. 35C2 & 35C5. (PER PLAT 19049)
- THE OUTLINES OF BULK PARCEL B SHOWN ON THIS PLAT, AND THE MONUMENTATION CALL-OUTS ASSOCIATED WITH THEM, WERE TAKEN FROM THOSE SHOWN ON PLAT NOS. 16125 AND 19049 PREPARED BY PATTON HARRIS RUST & ASSOCIATES, P.C. AND SAID TO BE BASED ON A FIELD RUN BOUNDARY SURVEY PERFORMED ON OR ABOUT DECEMBER 2000 BY RIEHER WIGGE, A DIVISION OF PATTON HARRIS RUST & ASSOCIATES, P.C. NO ADDITIONAL OR INDEPENDENT BOUNDARY SURVEY WAS PERFORMED BY KCI TECHNOLOGIES FOR THE PURPOSE OF THIS PLAT.
- FOREST CONSERVATION EASEMENTS: A-1, B-1, C-1 AND J-1 HAVE BEEN ESTABLISHED UNDER F-07-10, PLAT NOS. 19049, 19050 AND 19051; EASEMENTS (A TO C), D, E, F, H, I (AND J) HAVE BEEN ESTABLISHED UNDER SDF-01-058/FC, PLAT NOS. 14956 AND 14957; EASEMENT G WAS ABANDONED UNDER SDF-03-156/FC, PLAT NOS. 16125 AND 16126 AND A FEE-IN-LIEU PAID: OFF-SITE EASEMENTS A, B, C AND D WERE ESTABLISHED AT THE BELMONT CENTER UNDER SDF-06-106/FC, PLAT NOS. 21640 AND 21641. THESE EASEMENTS AREAS AND PVIOUS PAYMENTS OF A FEE-IN-LIEU, AND CREATION OF EASEMENT AREAS D-1 AND D-2, AS WELL AS, PAYMENT OF A FEE-IN-LIEU REQUIRED UNDER THIS FINAL PLAT, F-16-057 HAS FULFILLED THE FOREST CONSERVATION OBLIGATIONS FOR THE ENTIRE HOWARD COMMUNITY COLLEGE SITE IN ACCORDANCE WITH SECTION 16.1202 OF THE HOWARD COUNTY CODE AND FOREST CONSERVATION MANUAL.
- THIS PLAN WILL ABANDON PART OF EXISTING FOREST CONSERVATION AREA 'D' AS ESTABLISHED THROUGH PLAT NOS. 14956 AND 14957 BY PAYING AN ABANDONMENT FEE OF \$8,833.75. 10,393 TOTAL SQUARE FEET OF FC EASEMENT AREA WILL BE ABANDONED WITH 7,067 SQUARE FEET OUTSIDE THE NON-CREDITED FLOODPLAIN EASEMENT. THE FEE IS BASED ON THE AREA OUTSIDE THE FLOODPLAIN EASEMENT (\$1.25 PER SQUARE FOOT X 7,067 SQUARE FEET = \$8,833.75).

Owner/Developer:
Howard Community College
10901 Little Patuxent Parkway
Columbia, MD 21044

LEGEND

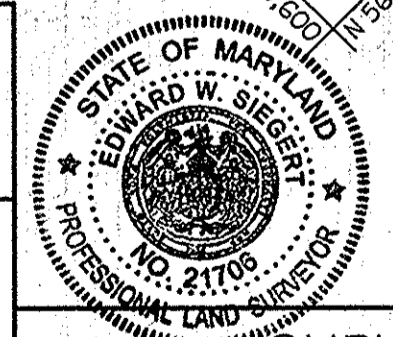
- 100 YEAR FLOOD PLAIN
- FOREST CONSERVATION EASEMENT
- FOREST CONSERVATION EASEMENT TO BE ABANDONED
- PUBLIC UTILITY EASEMENT
- WETLANDS



APPROVED: FOR PRIVATE WATER AND PRIVATE SEWERAGE SYSTEMS HOWARD COUNTY HEALTH DEPARTMENT.
B. Wilson for Maureen Rossman
HOWARD COUNTY HEALTH OFFICER
DATE: 12/15/2015

THE REQUIREMENTS OF SECTION 3-108, THE REAL PROPERTY ARTICLE, ANNOTATED CODE OF MARYLAND, 1988 REPLACEMENT VOLUME (AS SUPPLEMENTED) AS FAR AS THEY RELATE TO THE MAKING OF THIS PLAT AND SETTING OF MARKERS HAVE BEEN COMPLIED WITH.
Edward W. Siegart
EDWARD W. SIEGERT
PROFESSIONAL LAND SURVEYOR NO. 21706
BOARD OF HOWARD COMMUNITY COLLEGE
BY: CHARLES NIGHTINGALE, EXECUTIVE DIRECTOR OF FACILITIES/CAPITAL PROJECTS
DATE: 12-9-2015

APPROVED: HOWARD COUNTY DEPARTMENT OF PLANNING AND ZONING.
Chad Edmonson
CHIEF, DEVELOPMENT ENGINEERING DIVISION
DATE: 12-18-15
Neil S. [Signature]
DIRECTOR
DATE: 12-21-15



SURVEYOR'S CERTIFICATE

I HEREBY CERTIFY THAT THE REVISION TO THE FINAL EASEMENT SHOWN HEREON IS CORRECT; THAT IT DEFINES A REVISION TO THE FOREST CONSERVATION EASEMENT ON PART OF THE LANDS CONVEYED BY THE HOWARD RESEARCH AND DEVELOPMENT CORPORATION TO BOARD OF HOWARD COMMUNITY COLLEGE BY DEED DATED APRIL 18, 1968 AND RECORDED AMONG THE LAND RECORDS OF HOWARD COUNTY, MARYLAND IN LIBER 486 AT FOLIO 219 AND INQUISITION MADE BY THE BOARD OF TRUSTEES OF HOWARD COMMUNITY COLLEGE VS. SAMUEL AUGUSTUS COOK, ET AL, BY THE DEED DATED OCTOBER 8, 1969 AND RECORDED AMONG THE LAND RECORDS OF HOWARD COUNTY, MARYLAND IN LIBER NO. 523 AT FOLIO 328.
Edward W. Siegart
EDWARD W. SIEGERT
PROFESSIONAL LAND SURVEYOR
MARYLAND LICENSE NO. 21706 EXP. 06-02-2017
DATE: 12/09/15

OWNER'S CERTIFICATE

WE, THE BOARD OF HOWARD COMMUNITY COLLEGE, OWNERS OF THE PROPERTY SHOWN AND DESCRIBED HEREON, HEREBY ADOPT THIS PLAT OF REVISION; AND IN CONSIDERATION OF THE APPROVAL OF THIS PLAT OF REVISION BY THE DEPARTMENT OF PLANNING AND ZONING ESTABLISH THE MINIMUM BUILDING RESTRICTION LINES.
WITNESS MY HAND THIS 9th DAY OF December, 2015
BOARD OF HOWARD COMMUNITY COLLEGE
Charles Nightingale
CHARLES NIGHTINGALE, EXECUTIVE DIRECTOR OF FACILITIES/CAPITAL PROJECTS
WITNESS: *[Signature]*

PURPOSE STATEMENT

THE PURPOSE OF THIS PLAT IS TO ABANDON PARTS OF FOREST CONSERVATION EASEMENT D AS PREVIOUSLY RECORDED ON PLAT NOS. 14956 AND 16125 TO CREATE FC EASEMENTS D-1 AND D-2 FOR IMPROVEMENTS AS SHOWN ON SDF-16-003.

KCI TECHNOLOGIES
ENGINEERS
PLANNERS
SCIENTISTS
CONSTRUCTION MANAGERS
936 RIDGEBROOK ROAD
SHARPS, MARYLAND 21152
TELEPHONE: (410) 316-7800
FAX: (410) 316-7818

RECORDED AS PLAT NUMBER 23574
12/20/15
AMONG THE
LAND RECORDS OF HOWARD COUNTY, MARYLAND.

PLAT OF REVISION AND FOREST CONSERVATION PLAT OF ABANDONMENT/PROPERTY OF HOWARD COMMUNITY COLLEGE, PARCEL B (SDP-16-033)

SDP-01-58
PREVIOUS DPZ FILE NOS.: F-07-10, SDF-01-058/FC, SDF-03-156/FC & SDF-06-106/FC.
5TH ELECTION DISTRICT HOWARD COUNTY, MARYLAND
TAX MAP 35 GRID NO. 6 #12 PARCEL 47
ZONED: FOR # NT
SCALE: 1" = 200' DECEMBER 7, 2015
SHEET 1 OF 1
M:\2014\27146550\Drawings\FCE\SDP-01-58_PLAT 1