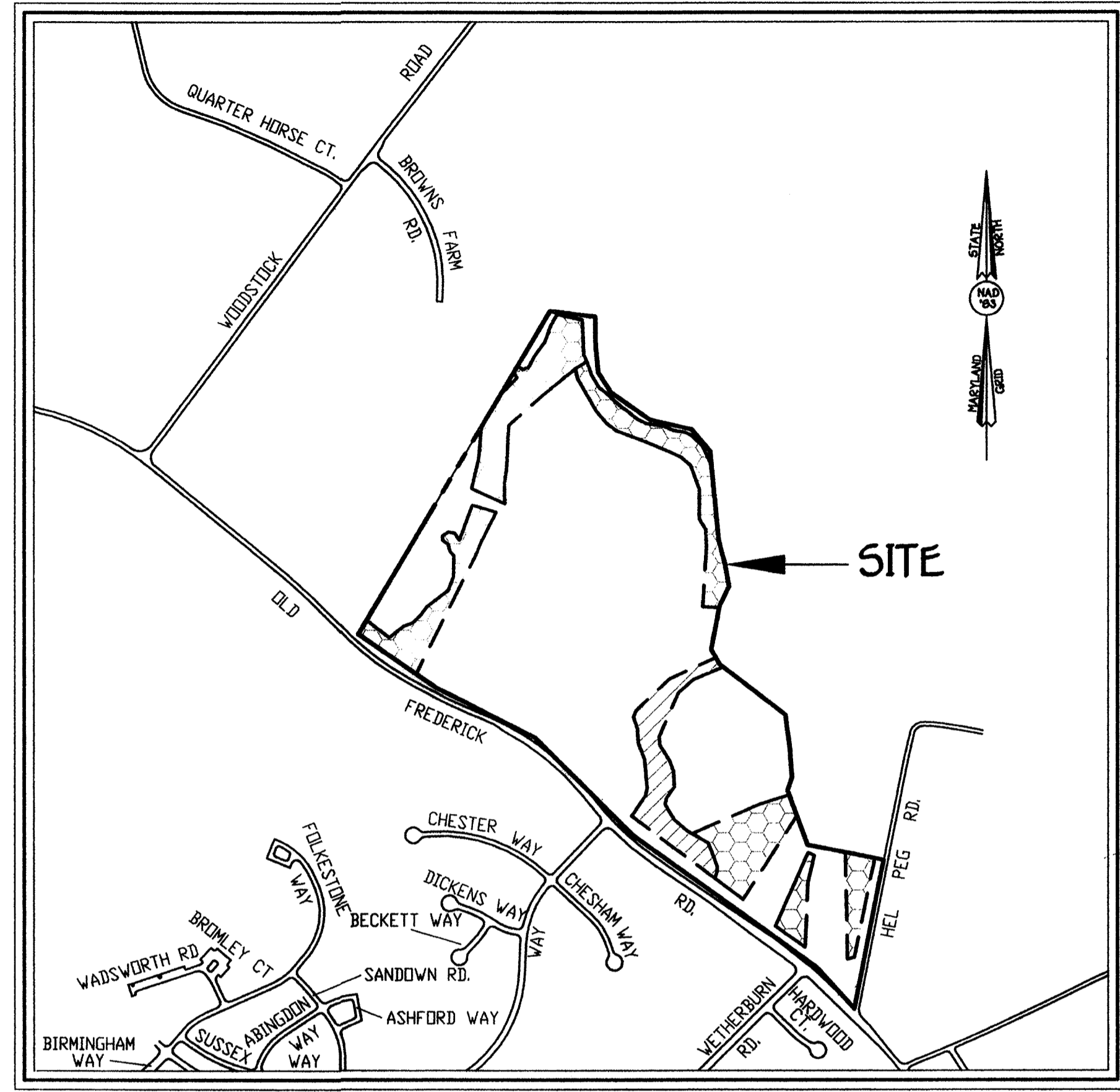


U.S. Equivalent Coordinate Table			Metric Coordinate Table		
POINT	NORTH (feet)	EAST (feet)	POINT	NORTH (meters)	EAST (meters)
700	601762.1640	1347322.9930	700	183423.570453	410664.870247
701	601752.6982	1347591.9980	701	183414.588635	410734.870145
702	601825.8662	1347591.9983	702	183375.930773	410734.868458
703	60471.3926	1347565.2321	703	183328.847136	410738.784260
704	601366.8278	1347631.1660	704	183297.585312	410758.801186
705	602230.5191	1347826.1899	705	183255.428763	410818.218770
706	600822.0937	1348035.3843	706	183240.888655	410881.982594
707	60070.8994	1348127.7886	707	183206.784379	410910.152924
708	600621.1766	1348171.6285	708	183089.700776	410923.531750
709	600497.2196	1348204.1334	709	183031.988625	410933.441754
710	600387.0050	1348223.3387	710	182998.329134	410939.478443
711	600286.7788	1348276.1822	711	182967.779332	410924.903939
712	600066.1842	1348333.3854	712	182900.538774	410911.868601
713	599989.3703	1348177.8887	713	182877.125832	410925.375629
714	599736.8861	1348507.1884	714	182800.188805	410925.806417
715	599564.0854	1348530.2888	715	182747.498738	410932.828126
716	599419.5420	1348538.4716	716	182703.441828	410935.653065
717	599355.2497	1348518.0411	717	182683.845480	410929.121035
718	599078.9178	1348618.8332	718	182599.619360	410959.842518
719	599002.2840	1349000.5466	719	182576.261329	411176.188991
720	598248.8577	1348853.8884	720	182346.555579	411314.477431
721	598458.8792	1348664.8885	721	182410.631214	410733.879585
722	598227.9714	1348016.3183	722	182553.610811	410876.195612
723	599126.0974	1347742.3887	723	182613.999742	410792.701714
724	599620.4737	1347249.7181	724	182764.685920	410642.534790
725	599812.7883	1348073.6352	725	182823.303528	410527.905098
726	599872.5884	1348752.2888	726	182841.530032	410490.911953
727	600144.2479	1348360.5404	727	182924.328841	410371.513473



GENERAL NOTES:

- Subject Property Zoned RC-DEO And RR-DEO Per 02/02/04 Comprehensive Zoning Plan.
- Coordinates Based On Nad '83, Maryland Coordinate System As Projected By Howard County Geodetic Control Stations No. 101a And No. 17ab.
- This Plat Is Based On The Plat Meridian Of A Plat Entitled "Plat For Forest Conservation Easement Property Of Howard County Conservancy", Plat No. 16654 Which States That The Plat Is Based On A Field Run Monumented Boundary Survey Performed On Or About October 1998 By E.F. Raphael And Associates.
- All Areas Are More Or Less (+ Or -).
- Previous Department Of Planning And Zoning File Number SDP-03-123.
- Forest Stand Delineation Was Prepared By Ecotone, Inc. Dated December 21, 2004.
- Denotes Existing Recorded Forest Conservation Easement On Plat Nos. 16654. The Forest Conservation Easement Has Been Established To Fulfill The Requirements Of Section 161200 Of The Howard County Code Forest Conservation Act. No Clearing, Grading Or Construction Is Permitted Within The Forest Conservation Easement; However, Forest Management Practices As Defined In The Deed Of Forest Conservation Easement Are Allowed.
- Denotes Forest Conservation Easement (Afforestation) To Satisfy An Offsite Forest Conservation Obligation For GTW's Waverly Woods (F-04-105) Totalling 16.22 Acres. The Amount Of Surety For This Off-site Planting Is \$353,271.60 Based On 16.22Ac X 43,560 Sq.Ft./Ac X \$4.50/Sq.Ft.
- Developer Reserves Unto Itself, Its Successors And Assigns, The Easements Shown On This Plat For Forest Conservation (Designated As "Forest Conservation Area"), Located In, On, Over And Through Parcel 315, Any Conveyances Of The Aforesaid Parcel Shall Be Subject To The Easements Herein Reserved, Whether On Not Expressly Stated In The Deed Conveying Said Parcel. Developer Shall Execute And Deliver Deeds For The Easement Herein Reserved To Howard County With A Metes And Bounds Description Of The Forest Conservation Area. Upon Completion Of The Public Utilities And Their Acceptance By Howard County, And In The Case Of The Forest Conservation Easements, Upon Completion Of The Developer's Obligations Under The Forest Conservation Installation And Maintenance Agreement Executed By The Developer And The County, And The Release Of Developer's Surety Posted With Said Agreement, The County Shall Accept The Easements And Record The Deed Of Easement In The Land Records Of Howard County, Maryland.
- This Plat Provides Fee Nos. 2 Thru 6 Which Contain A Total 16.22 Acres Of Afforestation To Satisfy Part Of The Of The Overall forest Conservation For GTW's Waverly Woods, F-04-105.
 - Fee No. 2 Contains 2.72 Acres.
 - Fee No. 3 Contains 3.82 Acres.
 - Fee No. 4 Contains 3.35 Acres.
 - Fee No. 5 Contains 5.23 Acres.
 - Fee No. 6 Contains 1.10 Acres.
- The Remaining Forest Obligation After The Recordation Of The Plat Entitled "Amended Plat, GTW's Waverly Woods, F-04-105" And Recorded As Plat Nos. 17248 Thru 17264 Was 17.82 Acres Retention And 31.33 Acres Afforestation.
- After The Recording Of This Plat The Remaining Forest Obligation Is 17.82 Acres Retention Or (95.7 Acres - 77.88 Acres) And 14.75 Acres Afforestation Or (108.8 Acres - 94.05 Acres).

The Requirements S3-108, The Real Property Article, Annotated Code Of Maryland 1988 Replacement Volume, (As Supplemented As Far As They Relate To The Making Of This Plat And The Setting Of Markers Have Been Complied With

Terrell A. Fisher 7/13/06
Terrell A. Fisher, L.S. #10692
(Registered Land Surveyor)

James E. Tillman 8-7-06
Howard County Conservancy, Inc.
By: James E. Tillman, President

Anne H. Jones 7-25-06
Howard County Conservancy, Inc.
By: Anne H. Jones, Secretary

OWNER
Howard County Conservancy, Inc.
P.O. Box 175
Woodstock, Maryland 21163-0175

DEVELOPER
Waverly Woods Development Corp.
C/O Mr. Donald Reuser
5300 Dorsey Hall Drive
Ellicott City, Maryland 21042

The Purpose Of This Plat Is To Establish The Off-Site Forest Conservation Easements No. 2 Thru No. 6 Within The Property Of Howard County Conservancy, Inc. For The Forest Obligation Of GTW's Waverly Woods (F-04-105).

APPROVED: Not For Construction, No Facilities Proposed.

Robert J. Wade 9/29/06
Howard County Health Officer

APPROVED: Howard County Department Of Planning And Zoning

Michael J. Williams 10/16/06
Chief, Development Engineering Division

Frank A. Cuyler 10/14/06
Director

OWNER'S CERTIFICATE

The Howard County Conservancy, Inc. By James E. Tillman, President And Anne H. Jones, Secretary, Owners Of The Property Shown And Described Hereon, Hereby Adopt This Plat; And In Consideration Of The Approval Of This Plat Of Forest Conservation Easement Shown Hereon.

Witness My/Our Hands This 7th Day Aug. 2006

James E. Tillman 8-7-06
James E. Tillman, President

Anne H. Jones 7-25-06
Anne H. Jones, Secretary

SURVEYOR'S CERTIFICATE

I hereby Certify That The Final Easement Shown Hereon Is Correct; That It Defines A Forest Conservation Easement On Part Of The Lands Conveyed By And Between Wilson P. McManus, Personal Representative Of The Estate Of Ruth D. Brown, Craig J. Hornig, Personal Representative Of The Estate Of Frances L. Brown To The Howard County Conservancy, Inc. By Deed Dated April 22, 1993 And Recorded Among The Land Records Of Howard County, Maryland In Liber 2841 At Folio 428.

Terrell A. Fisher 7/13/06
Terrell A. Fisher, L.S. #10692
Registered Land Surveyor No. 10692

RECORDED AS PLAT No. 18611 ON 10-26-06
AMONG THE LAND RECORDS OF HOWARD COUNTY, MARYLAND.

Amended Plat For Forest Conservation Easement Property Of Howard County Conservancy, Inc.

(Plat Entitled "Plat For Forest Conservation Easement Property Of Howard County Conservancy" - Plat No. 16654)
Zoned: RC-DEO and RR-DEO

Tax Map: 10 Parcel: 315 Grid: 24
Third Election District
Howard County, Maryland

Scale: As Shown
Date: July 11, 2006
Sheet 1 of 3

Forest Conservation Easement #2 (2.72 Ac.) Upland Forest

Line	Bearing & Distance
FCE2-1	S89°00'09"W 126.83'
FCE2-2	S89°00'09"W 126.83'
FCE2-3	S89°00'09"W 126.83'
FCE2-4	S89°00'09"W 126.83'
FCE2-5	S89°00'09"W 126.83'
FCE2-6	S89°00'09"W 126.83'
FCE2-7	S89°00'09"W 126.83'
FCE2-8	S89°00'09"W 126.83'
FCE2-9	S89°00'09"W 126.83'
FCE2-10	S89°00'09"W 126.83'
FCE2-11	S89°00'09"W 126.83'
FCE2-12	S89°00'09"W 126.83'
FCE2-13	S89°00'09"W 126.83'
FCE2-14	S89°00'09"W 126.83'
FCE2-15	S89°00'09"W 126.83'
FCE2-16	S89°00'09"W 126.83'
FCE2-17	S89°00'09"W 126.83'
FCE2-18	S89°00'09"W 126.83'
FCE2-19	S89°00'09"W 126.83'
FCE2-20	S89°00'09"W 126.83'
FCE2-21	S89°00'09"W 126.83'
FCE2-22	S89°00'09"W 126.83'

Forest Conservation Easement #4 (3.35 Ac.) Riparian Forest

Line	Bearing & Distance
FCE4-1	S50°00'09"W 126.83'
FCE4-2	S50°00'09"W 126.83'
FCE4-3	S50°00'09"W 126.83'
FCE4-4	S50°00'09"W 126.83'
FCE4-5	S50°00'09"W 126.83'
FCE4-6	S50°00'09"W 126.83'
FCE4-7	S50°00'09"W 126.83'
FCE4-8	S50°00'09"W 126.83'
FCE4-9	S50°00'09"W 126.83'
FCE4-10	S50°00'09"W 126.83'
FCE4-11	S50°00'09"W 126.83'
FCE4-12	S50°00'09"W 126.83'
FCE4-13	S50°00'09"W 126.83'
FCE4-14	S50°00'09"W 126.83'
FCE4-15	S50°00'09"W 126.83'
FCE4-16	S50°00'09"W 126.83'
FCE4-17	S50°00'09"W 126.83'
FCE4-18	S50°00'09"W 126.83'
FCE4-19	S50°00'09"W 126.83'
FCE4-20	S50°00'09"W 126.83'
FCE4-21	S50°00'09"W 126.83'
FCE4-22	S50°00'09"W 126.83'

Forest Conservation Easement #3 (3.82 Ac.) Upland Forest

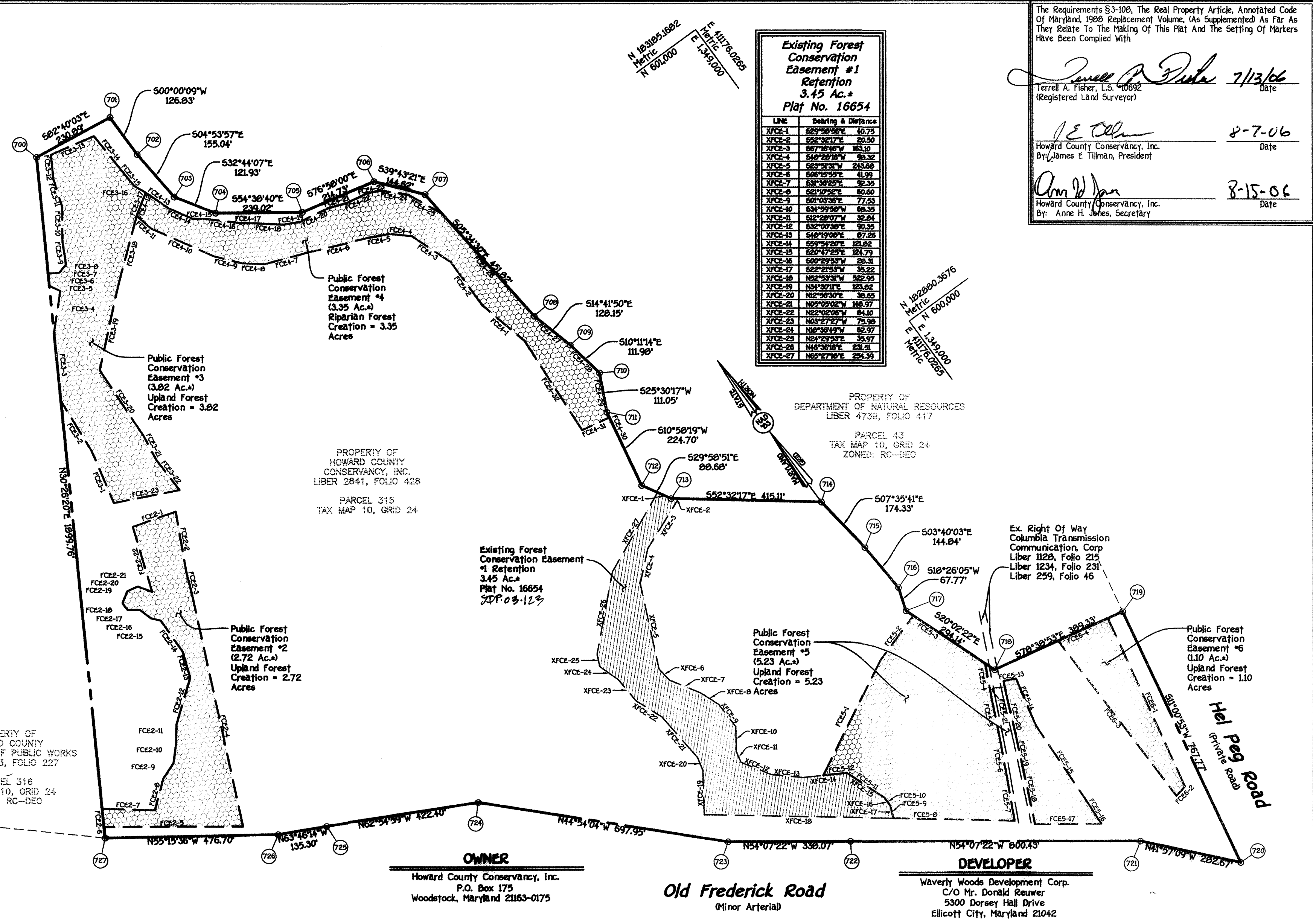
Line	Bearing & Distance
FCE3-1	S89°00'09"W 126.83'
FCE3-2	S89°00'09"W 126.83'
FCE3-3	S89°00'09"W 126.83'
FCE3-4	S89°00'09"W 126.83'
FCE3-5	S89°00'09"W 126.83'
FCE3-6	S89°00'09"W 126.83'
FCE3-7	S89°00'09"W 126.83'
FCE3-8	S89°00'09"W 126.83'
FCE3-9	S89°00'09"W 126.83'
FCE3-10	S89°00'09"W 126.83'
FCE3-11	S89°00'09"W 126.83'
FCE3-12	S89°00'09"W 126.83'
FCE3-13	S89°00'09"W 126.83'
FCE3-14	S89°00'09"W 126.83'
FCE3-15	S89°00'09"W 126.83'
FCE3-16	S89°00'09"W 126.83'
FCE3-17	S89°00'09"W 126.83'
FCE3-18	S89°00'09"W 126.83'
FCE3-19	S89°00'09"W 126.83'
FCE3-20	S89°00'09"W 126.83'
FCE3-21	S89°00'09"W 126.83'
FCE3-22	S89°00'09"W 126.83'

Forest Conservation Easement #5 (5.23 Ac.) Upland Forest

Line	Bearing & Distance
FCE5-1	S89°00'09"W 126.83'
FCE5-2	S89°00'09"W 126.83'
FCE5-3	S89°00'09"W 126.83'
FCE5-4	S89°00'09"W 126.83'
FCE5-5	S89°00'09"W 126.83'
FCE5-6	S89°00'09"W 126.83'
FCE5-7	S89°00'09"W 126.83'
FCE5-8	S89°00'09"W 126.83'
FCE5-9	S89°00'09"W 126.83'
FCE5-10	S89°00'09"W 126.83'
FCE5-11	S89°00'09"W 126.83'
FCE5-12	S89°00'09"W 126.83'
FCE5-13	S89°00'09"W 126.83'
FCE5-14	S89°00'09"W 126.83'
FCE5-15	S89°00'09"W 126.83'
FCE5-16	S89°00'09"W 126.83'
FCE5-17	S89°00'09"W 126.83'
FCE5-18	S89°00'09"W 126.83'
FCE5-19	S89°00'09"W 126.83'
FCE5-20	S89°00'09"W 126.83'
FCE5-21	S89°00'09"W 126.83'
FCE5-22	S89°00'09"W 126.83'

Forest Conservation Easement #6 (1.10 Ac.) Upland Forest

Line	Bearing & Distance
FCE6-1	S89°00'09"W 126.83'
FCE6-2	S89°00'09"W 126.83'
FCE6-3	S89°00'09"W 126.83'
FCE6-4	S89°00'09"W 126.83'



Existing Forest Conservation Easement #1 Retention 3.45 Ac. Plat No. 16654

Line	Bearing & Distance
XFCE-1	S67°38'36"E 40.75'
XFCE-2	S67°38'36"E 40.75'
XFCE-3	S67°38'36"E 40.75'
XFCE-4	S67°38'36"E 40.75'
XFCE-5	S67°38'36"E 40.75'
XFCE-6	S67°38'36"E 40.75'
XFCE-7	S67°38'36"E 40.75'
XFCE-8	S67°38'36"E 40.75'
XFCE-9	S67°38'36"E 40.75'
XFCE-10	S67°38'36"E 40.75'
XFCE-11	S67°38'36"E 40.75'
XFCE-12	S67°38'36"E 40.75'
XFCE-13	S67°38'36"E 40.75'
XFCE-14	S67°38'36"E 40.75'
XFCE-15	S67°38'36"E 40.75'
XFCE-16	S67°38'36"E 40.75'
XFCE-17	S67°38'36"E 40.75'
XFCE-18	S67°38'36"E 40.75'
XFCE-19	S67°38'36"E 40.75'
XFCE-20	S67°38'36"E 40.75'
XFCE-21	S67°38'36"E 40.75'
XFCE-22	S67°38'36"E 40.75'
XFCE-23	S67°38'36"E 40.75'
XFCE-24	S67°38'36"E 40.75'
XFCE-25	S67°38'36"E 40.75'
XFCE-26	S67°38'36"E 40.75'
XFCE-27	S67°38'36"E 40.75'

The Requirements §3-108, The Real Property Article, Annotated Code Of Maryland, 1986 Replacement Volume, (As Supplemented As Far As They Relate To The Making Of This Plat And The Setting Of Markers Have Been Complied With

James A. Fisher 7/13/06
Terrell A. Fisher, L.S. 10692
(Registered Land Surveyor)

J.E. Tillman 8-7-06
Howard County Conservancy, Inc.
By: James E. Tillman, President

Anne H. Jones 8-15-06
Howard County Conservancy, Inc.
By: Anne H. Jones, Secretary

PROPERTY OF HOWARD COUNTY DEPARTMENT OF PUBLIC WORKS LIBER 2963, FOLIO 227

PARCEL 316 TAX MAP 10, GRID 24 ZONED: RC-DEO

PROPERTY OF HOWARD COUNTY CONSERVANCY, INC. LIBER 2841, FOLIO 428

PARCEL 315 TAX MAP 10, GRID 24

PROPERTY OF DEPARTMENT OF NATURAL RESOURCES LIBER 4739, FOLIO 417

PARCEL 43 TAX MAP 10, GRID 24 ZONED: RC-DEO

OWNER
Howard County Conservancy, Inc.
P.O. Box 175
Woodstock, Maryland 21163-0175

DEVELOPER
Waverly Woods Development Corp.
C/O Mr. Donald Reuser
5300 Dorsey Hall Drive
Ellicott City, Maryland 21042

APPROVED: Not For Construction, No Facilities Proposed.

Robert J. Wehr 9/29/06
Howard County Health Officer 1997 Date

APPROVED: Howard County Department Of Planning And Zoning.

Mark P. C. ... 10/16/06
Chief, Development Engineering Division Date

Mark P. C. ... 10/16/06
Director Date

OWNER'S CERTIFICATE

The Howard County Conservancy, Inc. By James E. Tillman, President And Anne H. Jones, Secretary, Owners Of The Property Shown And Described Hereon, Hereby Adopt This Plat; And In Consideration Of The Approval Of This Plat Of Forest Conservation Easement Shown Hereon.

Witness My/Our Hands This 7th Day Aug. 2006.

J.E. Tillman 8-7-06
James E. Tillman, President Date

J.H.C. 8/7/06
Witness Date

Anne H. Jones 7-25-06
Anne H. Jones, Secretary Date

[Signature] 7-25-06
Witness Date

SURVEYOR'S CERTIFICATE

I Hereby Certify That The Final Easement Shown Hereon Is Correct; That It Defines A Forest Conservation Easement On Part Of The Lands Conveyed By And Between Wilson P. McManus, Personal Representative Of The Estate Of Ruth D. Brown, Craig J. Hornig, Personal Representative Of The Estate Of Frances L. Brown To The Howard County Conservancy, Inc., By Deed Dated April 22, 1993 And Recorded Among The Land Records Of Howard County, Maryland In Liber 2841 At Folio 428.

Terrell A. Fisher 7/13/06
Terrell A. Fisher, Professional Land Surveyor No. 10692 Date

RECORDED AS PLAT No. 18612 ON 10-26-06
AMONG THE LAND RECORDS OF HOWARD COUNTY, MARYLAND.

Amended Plat For Forest Conservation Easement Property Of Howard County Conservancy, Inc.

(Plat Entitled "Plat For Forest Conservation Easement Property Of Howard County Conservancy" - Plat No. 16654) Zoned: RC-DEO and RR-DEO

Tax Map: 10 Parcel: 315 Grid: 24
Third Election District
Howard County, Maryland

Scale: 1" = 200'
Date: March 20, 2006
Sheet 2 of 3

MASTER OVERALL FOREST CONSERVATION - GTW'S WAVERLY WOODS

SECTION/AREA DESIGNATION LEGEND	HOWARD COUNTY DPZ FILE No.	FOREST RECORDING REFERENCE	AREA OF FOREST RETENTION REQUIRED	AREA OF CREDITED FOREST RETENTION PROVIDED	AREA OF FOREST PLANTING REQUIRED	AREA OF CREDITED FOREST PLANTING PROVIDED	AREA OF SURPLUS FOREST RETENTION	AREA OF SURPLUS FOREST PLANTING
SECTION 4/AREA 1 SECTION 4/AREA 2	F-95-173 F-95-174	PLAT No. 12249 PLAT No. 12250	4.09 AC.*	O.S. LOT 19 = 3.10 AC.* O.S. LOT 10 = 0.98 AC.* OFF-SITE = 0.18 AC.* TOTAL = 4.26 AC.*	0.11 AC.*	WEST FRIENDSHIP ESTATES PRES. PARCEL "B" TOTAL = 0.13 AC.*	+0.17 AC.*	+0.02 AC.*
SECTION 5	F-96-179	PLAT No. 12717 PLAT No. 12718	2.58 AC.*	O.S. LOT 55 = 1.97 AC.* O.S. LOT 6 = 0.82 AC.* TOTAL = 2.59 AC.*	2.55 AC.*	O.S. LOT 55 = 1.77 AC.* O.S. LOT 6 = 0.78 AC.* TOTAL = 2.55 AC.*	+0.01 AC.*	+0.00 AC.*
SECTION 6	F-98-00 F-98-00 F-98-00 F-98-00 F-98-00 F-98-00 F-98-00 F-98-00 F-98-00 F-98-00 F-98-00	PLAT No. 13513 PLAT No. 13514 PLAT No. 13515 PLAT No. 13516 PLAT No. 13516 PLAT F-98-00-J-2 (Part No. 1) PLAT F-98-00-J-2 (Part No. 2) PLAT F-98-00-J-2 (Part No. 3) PLAT F-98-00-J-2 (Part No. 4) PLAT F-98-00-J-1 (Part No. 1) PLAT F-98-00-J-1 (Part No. 2)	2.01 AC.*	0.42 AC.* 1.83 AC.* 0.00 AC.* 0.00 AC.* 0.34 AC.* 0.00 AC.* 0.00 AC.* 0.00 AC.* 0.00 AC.* 0.00 AC.* TOTAL = 2.59 AC.*	4.77 AC.*	0.00 AC.* 0.00 AC.* 0.28 AC.* 0.02 AC.* 0.67 AC.* 0.28 AC.* 0.81 AC.* 0.62 AC.* 1.46 AC.* 0.27 AC.* (O.S. LOT 19, 54, AD) 0.84 AC.* (O.S. LOT 19, 54, AD) TOTAL = 5.23 AC.*	+0.58 AC.*	+0.46 AC.*
SECTION 7	F-97-180 F-00-133	PLAT No. 13439 & 13440 PLAT No. 14271	13.14 AC.	O.S. LOT 1 & PARCEL B = 7.019 Ac O.S. LOT 1 = 8.944 Ac	0.00 AC.	0.00 AC.*	2.823 AC.	0.00 AC.*
SECTION 10	F-00-06 F-00-06	PLAT No. 14140 PLAT No. 14119	0.00 AC.	0.00 AC. 0.00 AC. TOTAL = 0.00 AC.	0.62 AC.	O.S. LOT 34 = 0.71 AC.* O.S. LOT 34 (SECT. 6) = 0.84 AC.* TOTAL = 1.55 AC.*	+0.00 AC.	+0.93 AC.*
SECTION 11, AREA 1	F-01-91	PLAT No. 15022	1.30 AC.	WEST SIDE MARRIOTTVILLE ROAD 1.30 AC. (SEE SHEET 10 OF 11 ROAD PLANS)	0.00 AC.	0.00 AC.	+0.00 AC.	0.00 AC.
SECTION 11, AREA 2	F-01-148	PLAT No. 15199	0.18 AC.	0.18 AC.	0.00 AC.	0.00 AC.	+0.00 AC.	+0.00 AC.
SECTION 11, AREA 3	F-01-147	PLAT No. 15228 PLAT No. 15223	1.13 AC.	WEST SIDE MARRIOTTVILLE ROAD 0.72 AC. (SEE ROAD SHEET 8) O.S. LOT 11 = 0.41 AC. TOTAL = 1.13 AC.	0.00 AC.	0.00 AC.	+0.00 AC.	+0.00 AC.
SECTION 11, AREA 4	F-01-93	PLAT No. 15069 PLAT No. 15060 THRU 15063	14.59 AC.	WEST SIDE MARRIOTTVILLE ROAD 10.52 AC. (SEE ROAD SHEET 12) O.S. LOT 22 = 74.75 = 4.07 AC. TOTAL = 14.59 AC.	0.00 AC.	0.00 AC.	+0.00 AC.	+0.00 AC.
SECTION 12	F-01-31 F-01-31 F-01-31	PLAT No. 14792 PLAT No. 14790 PLAT No. 14791	0.00 AC.	0.00 AC. TOTAL = 0.00 AC.	1.86 AC.	O.S. LOT 8 = 0.40 AC.* O.S. LOT 48 = 0.31 AC.* O.S. LOT 97 = 0.26 AC.* TOTAL = 0.97 AC.*	+0.00 AC.	(-10.89 AC.)
SECTION 13	F-04-58 F-04-58	PLAT NO. 16941-16962 PLAT NO. 16963	23.99 AC. 0.00 AC.	23.99 AC.* 0.00 AC.	30.90 AC. 0.00 AC.	O.S. LOT 3 = 4.13 AC.* HOWARD HUNT PROPERTIES 41.00 AC.* TOTAL = 45.13 AC.*	+0.00 AC.	+14.23 AC.
AMENDED PLATS SECTION 4, AREA 1; SECTION 5; SECTION 7; SECTION 11, AREA 2; AND SECTION 11, AREA 3	F-04-105	PLAT NO. 17248-17264	0.00 AC.	11.283 AC.*	0.00 AC.	7.766 AC.	11.283 AC.	7.766 AC.
GAITHER HUNT SECTION 1 AREA 1 NON-BUILDABLE PRESERVATION PARCEL "B"	F-05-100	PLAT NO. 17243-17247	0.00 AC.	0.00 AC.*	0.00 AC.	6.14 AC.	0.00 AC.	6.14 AC.
AMENDED PLATS GTW'S WAVERLY WOODS SECTION 13, OPEN SPACE LOT 5	F-06-175	PLAT NO.	0.00 AC.	0.00 AC.*	0.00 AC.	0.36 AC.	0.00 AC.	0.36 AC.
AMENDED PLATS HOWARD COUNTY CONSERVANCY, INC	F-02-35	PLAT NO.	0.00 AC.	0.00 AC.*	0.00 AC.	16.22 AC.	0.00 AC.	16.22 AC.
TOTALS			63.01 AC.*	77.88 AC.*	48.81 AC.*	94.05 AC.	14.87 AC.*	45.24 AC.

Developer
Waverly Woods Development Corporation
Suite 102
5300 Dorsey Hill Drive
Ellicott City, Maryland 21042

OWNER
Howard County Conservancy, Inc.
P.O. Box 175
Woodstock, Maryland 21163-0175

FISHER, COLLINS & CARTER, INC.
CIVIL ENGINEERING CONSULTANTS & LAND SURVEYORS
CENTENNIAL SQUARE OFFICE PARK - 8672 BALTIMORE NATIONAL PIKE
ELLCOTT CITY, MARYLAND 21042
410-461-2855

APPROVED: Not For Construction, No Facilities Proposed.

Robert J. Walsh 9/29/06
Howard County Health Officer Date

APPROVED: Howard County Department Of Planning And Zoning

William D. ... 10/10/06
Chief, Development Engineering Division Date

... 11/10/06
Director Date

Owner's Certificate

The Howard County Conservancy, Inc. By James E. Tillman, President And Anne H. Jones, Secretary, Owners Of The Property Shown And Described Hereon, Hereby Adopt This Plat; And In Consideration Of The Approval Of This Plat Of Forest Conservation Easement Shown Hereon.

Witness My/Our Hands This 7th Day Aug, 2006.

James E. Tillman 8-7-06
James E. Tillman, President Date

Anne H. Jones 7-25-06
Anne H. Jones, Secretary Date

... 8-7-06
Witness Date

... 7-25-06
Witness Date

Surveyor's Certificate

I Herby Certify That The Final Easement Shown Hereon is Correct; That It Defines A Forest Conservation Easement On Part Of The Lands Conveyed By And Between Wilson P. McManus, Personal Representative Of The Estate Of Ruth D. Brown, Craig J. Hornig, Personal Representative Of The Estate Of Frances L. Brown To The Howard County Conservancy, Inc., By Deed Dated April 22, 1993 And Recorded Among The Land Records Of Howard County, Maryland In Liber 2841 At Folio 428.

Terrell A. Fisher 7/19/06
Terrell A. Fisher, Professional Land Surveyor No. 10692 Date

RECORDED AS PLAT No. 18613 ON 10-26-06
AMONG THE LAND RECORDS OF HOWARD COUNTY, MARYLAND.

**Amended Plat For
Forest Conservation Easement
Property Of
Howard County Conservancy, Inc.**

(Plat Entitled "Plat For Forest Conservation Easement
Property Of Howard County Conservancy" - Plat No. 16854)
Zoned: RC-DEO and RR-DEO

Tax Map: 10 Parcel: 315 Grid: 24
Third Election District
Howard County, Maryland

Scale: 1"=100'

Date: March 20, 2006
Sheet 3 of 3