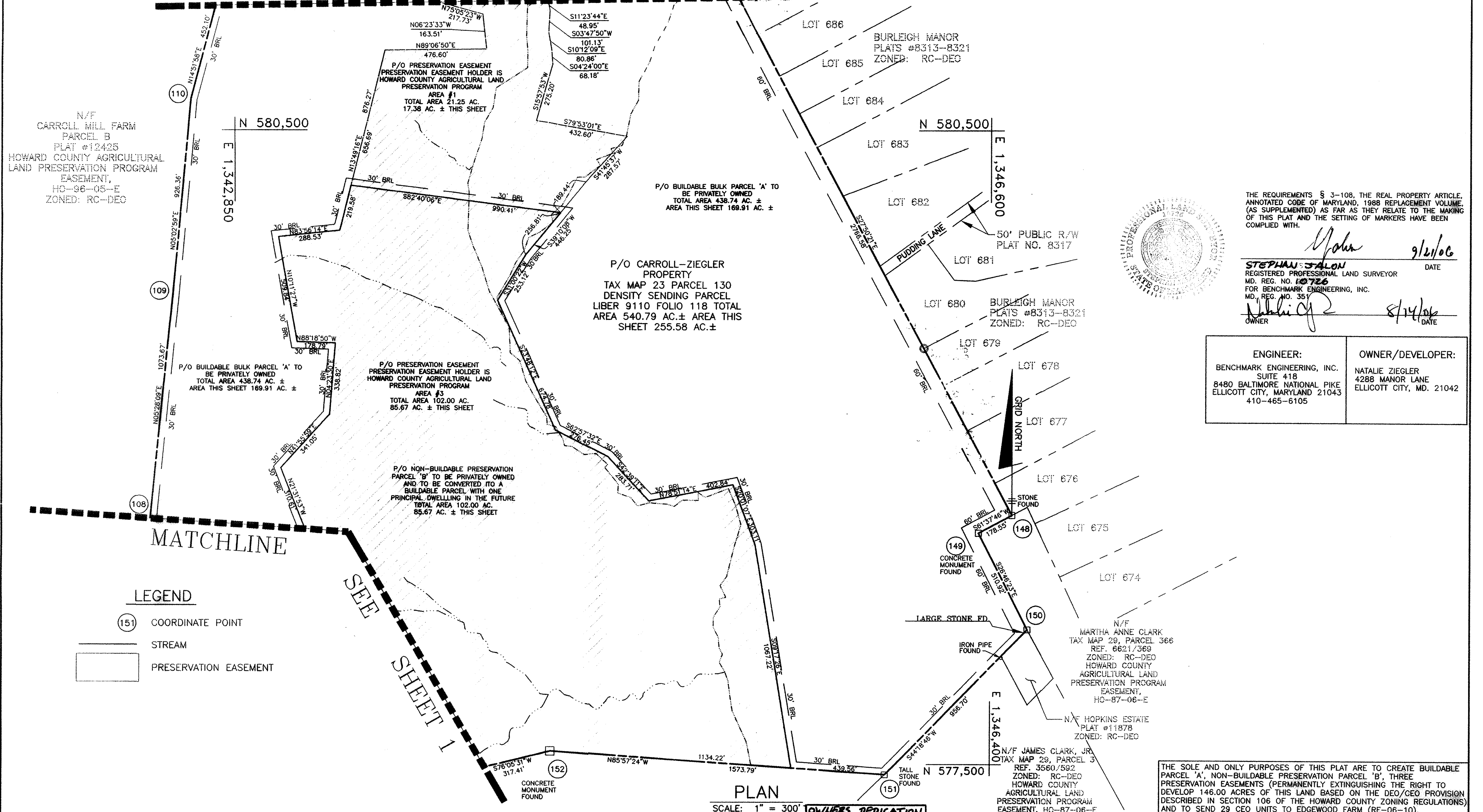


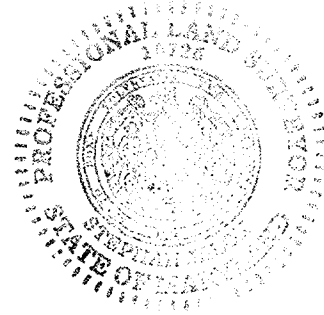




MATCHLINE SEE SHEET 3



LEGEND
(151) COORDINATE POINT
STREAM
PRESERVATION EASEMENT



THE REQUIREMENTS § 3-108, THE REAL PROPERTY ARTICLE, ANNOTATED CODE OF MARYLAND, 1988 REPLACEMENT VOLUME...

STEPHAN JALON
REGISTERED PROFESSIONAL LAND SURVEYOR
MD. REG. NO. 10726
FOR BENCHMARK ENGINEERING, INC.
MD. REG. NO. 351

ENGINEER: BENCHMARK ENGINEERING, INC.
OWNER/DEVELOPER: NATALIE ZIEGLER

MATCHLINE SEE SHEET 1

PLAN
SCALE: 1" = 300'

THE SOLE AND ONLY PURPOSES OF THIS PLAT ARE TO CREATE BUILDABLE PARCEL 'A', NON-BUILDABLE PRESERVATION PARCEL 'B', THREE PRESERVATION EASEMENTS...

APPROVED: FOR PRIVATE WATER AND PRIVATE SEWER SYSTEMS: HOWARD COUNTY HEALTH DEPARTMENT
Robert J. Walsh 10/27/06

APPROVED: HOWARD COUNTY DEPARTMENT OF PLANNING AND ZONING
Division
Director: Stephen Jalon 11/13/06

SURVEYOR'S CERTIFICATE
I HEREBY CERTIFY THAT, TO THE BEST OF MY PROFESSIONAL KNOWLEDGE, INFORMATION AND BELIEF, THAT THE FINAL PLAT SHOWN HEREON IS CORRECT...

OWNERS DEDICATION
WE, MARY CARTER CARROLL ZIEGLER, JOHN LEE CARROLL, JR.; THOMAS T. CARROLL; GENEVIVE ANNE CARROLL; NATALIE C. ZIEGLER (AKA NATALIE ZIEGLER ZIRSCHKY); SOPHIE ZIEGLER; JESSICA M. ZIEGLER; JONATHAN IAN SCHWARTZ; SOPHIE A. ZIEGLER, AND NATALIE C. ZIEGLER, TRUSTEES OF THE REED E. ZIEGLER SCHWARTZ TRUST-2000; NATALIE C. ZIEGLER, TRUSTEE OF THE JESSICA ZIEGLER TRUST 2000; JONATHAN IAN SCHWARTZ, SOPHIE A. ZIEGLER, AND NATALIE C. ZIEGLER, TRUSTEES OF THE RAY ZIEGLER SCHWARTZ TRUST-2002; AND JESSICA ZIEGLER, SUCCESSOR TRUSTEE OF THE ZIEGLER FAMILY IRREVOCABLE TRUST FOR THE BENEFIT OF ALEXANDRA N. ZIRSCHKY AND J. CHRISTIAN ZIRSCHKY...

RECORDED AS PLAT NO. 18641
ON 11-17-06
BUILDABLE BULK PARCEL 'A', NON-BUILDABLE PRESERVATION PARCEL 'B' SUBDIVISION PLAT AND PLAT OF EASEMENT FOR SENDING PARCEL
CARROLL-ZIEGLER PROPERTY
3841 MANOR LANE, ELLICOTT CITY, MD 21042
2nd AND 3rd ELECTION DISTRICTS OF HOWARD COUNTY, MARYLAND
ZONING: RC-DEO
GRID: 10
PARCEL: 130
SCALE: AS SHOWN
DATE: JULY, 2006
SHEET: 2 of 3

F-06-228

