

TABULATION CHART FOR FOREST CONSERVATION EASEMENT AREA THIS SHEET

AREA	SG. FEET	ACRES
D	105,266	2.417
E	69,999	1.607
F	16,422	0.377
H*	13,870	0.318
I*	3,047	0.070
TOTAL	208,604	4.789

TABULATION CHART FOR FOREST CONSERVATION EASEMENT AREA THIS SUBMISSION

AREA	SG. FEET	ACRES
A	77,426	1.777
B	106,753	2.451
C	484,270	11.117
D	105,266	2.417
E	69,999	1.607
F	16,422	0.377
H*	13,870	0.318
I*	3,047	0.070
J	108,460	2.440
TOTAL	985,513	22.624

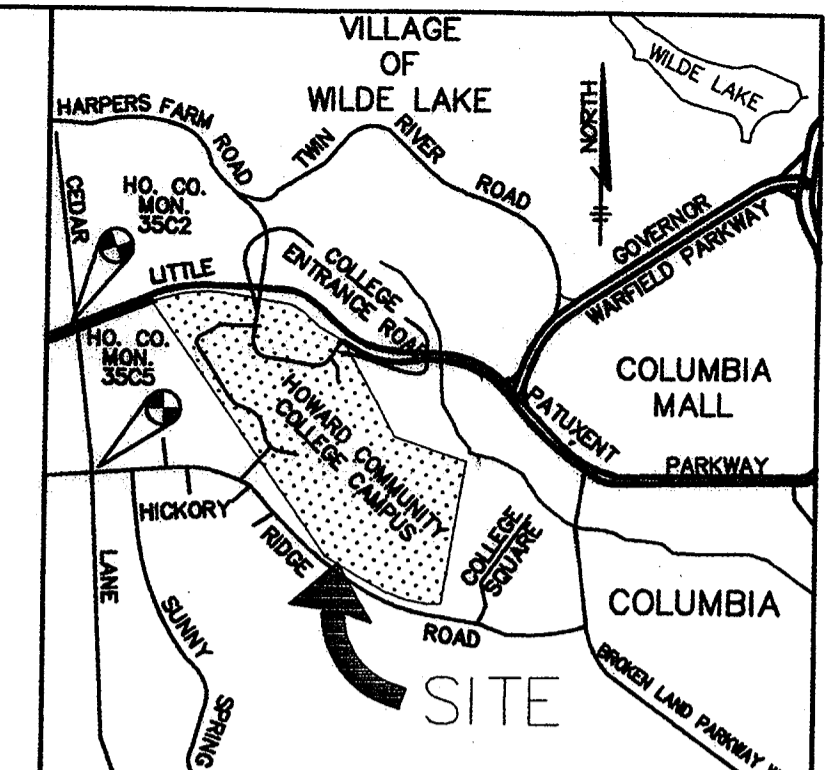
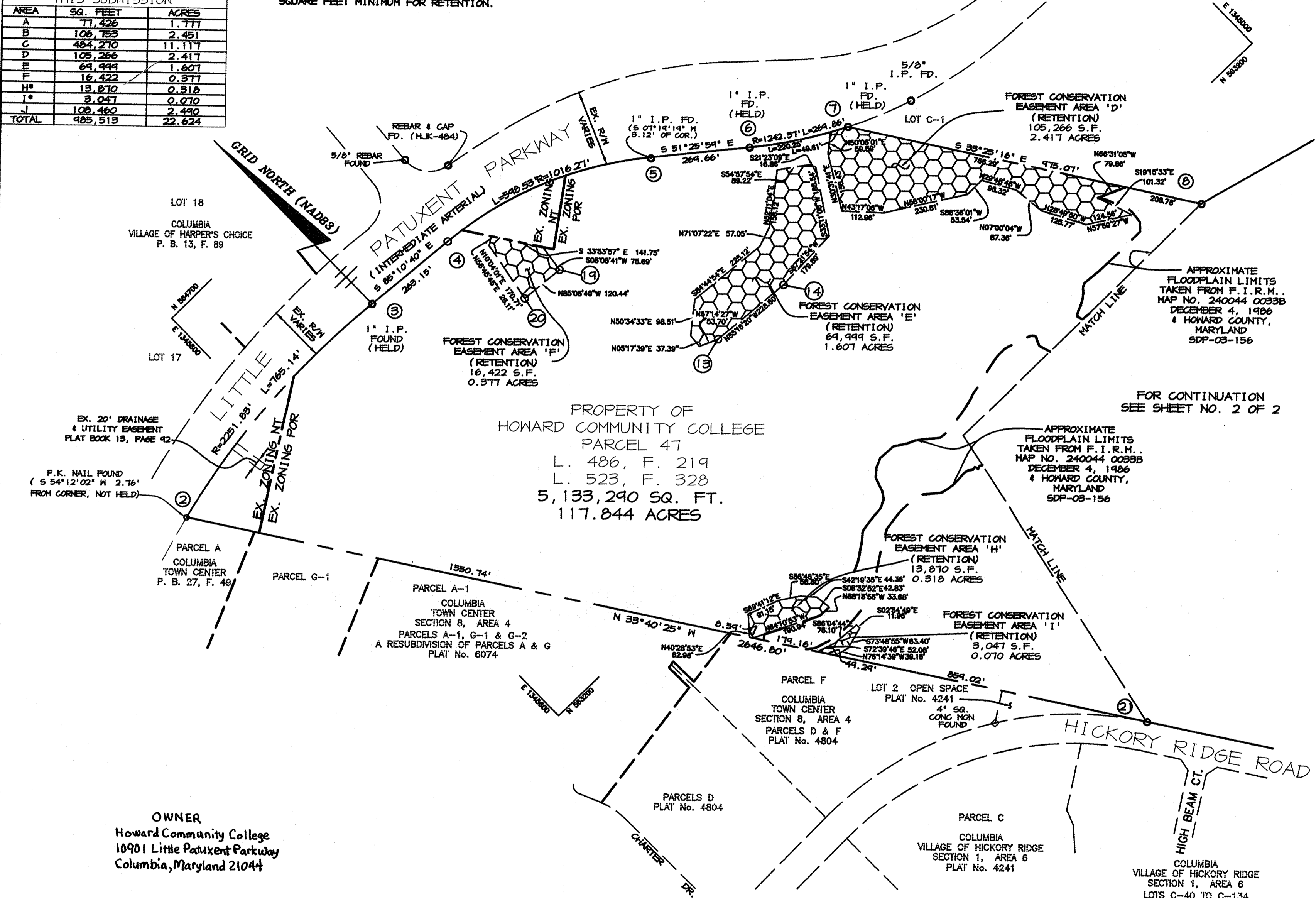
CURVE DATA

CURVE	RADIUS	LENGTH	TANGENT	BEARING	CHORD	DELTA
2-3	2251.83'	785.14'	386.29'	N 85°05'09" E	781.47'	19°28'06"
4-5	1018.27'	598.53'	308.23'	S 68°18'20" E	589.92'	33°44'40"
6-7	1242.37'	269.86'	135.46'	S 57°39'22" E	269.33'	12°26'44"

COORDINATE LIST

No.	NORTH	EAST
2	564285.252	1345255.519
3	564350.482	1346014.186
4	564328.360	1346276.408
5	564110.242	1346824.544
6	563942.177	1347085.388
7	563798.065	1347262.932
13	563640.935	1346563.252
14	563616.844	1346867.811
19	564063.623	1346439.428
20	564075.818	1346318.418
21	562082.553	1346723.066

NOTE:
* AREAS H AND I NOT COMBINED DUE TO FLOODPLAIN BETWEEN. HOWEVER INCLUSION OF FLOODPLAIN FOREST ALLOWS THESE AREAS TO MEET THE 10,000 SQUARE FEET MINIMUM FOR RETENTION.



VICINITY MAP
SCALE: 1" = 2000'

- GENERAL NOTES:
- SUBJECT PROPERTY ZONED FOR AND NT PER THE 02/02/04.
 - COORDINATES BASED ON NAD '83 MARYLAND COORDINATES SYSTEM AS PROJECTED BY HOWARD COUNTY GEODETIC CONTROL STATIONS NO. 35C2 & 35C5.
 - THIS PLAT IS BASED ON A FIELD RUN MONUMENTED BOUNDARY SURVEY PERFORMED ON OR ABOUT DECEMBER 2000 BY RIEMER MUESSGE, A DIVISION OF PATTON HARRIS RUST & ASSOCIATES, PC.
 - DENOTES AN IRON PIPE FOUND
● DENOTES AN REBAR & CAP FOUND
⊙ DENOTES AN P.K. NAIL FOUND
 - FOREST CONSERVATION EASEMENTS 'A' THRU 'J' HAVE BEEN ESTABLISHED TO FULFILL THE REQUIREMENTS FOR SDP-01-58, WITH RESPECT TO SECTION 16.1200 OF THE HOWARD COUNTY FOREST CONSERVATION ACT. NO CLEARING, GRADING, OR CONSTRUCTION IS PERMITTED WITHIN THE FOREST CONSERVATION EASEMENT; HOWEVER, FOREST MANAGEMENT PRACTICES, AS DEFINED IN THE DEED OF FOREST CONSERVATION EASEMENT, ARE ALLOWED.
 - NO SURETY IS REQUIRED SINCE THIS IS A GOVERNMENT USE. FOREST CONSERVATION OBLIGATIONS FOR ENTIRE CAMPUS, IN ACCORDANCE WITH SECTION 16.202 OF THE HOWARD COUNTY CODE AND FOREST CONSERVATION MANUAL, HAVE BEEN MET BY THE PLACEMENT OF 23.53 ACRES OF FOREST RETENTION EASEMENTS AND PAYMENT OF FEE-IN-LIEU FOR 0.07 ACRES OF REFORESTATION OBLIGATION IN THE AMOUNT OF \$1524.60 UNDER SDP-01-58. FOREST CONSERVATION EASEMENT 'G' (0.904 AC. OF RETENTION) WAS PREVIOUSLY ABANDONED UNDER PLAT Nos. 16125 & 16126, AND A FEE OF ABANDONMENT IN THE AMOUNT OF \$39,347 WAS PAID TO THE FOREST CONSERVATION FUND AT THAT TIME.

PURPOSE STATEMENT
THE PURPOSE OF THIS PLAT IS TO REVISE THE FLOODPLAIN DELINEATION AS PREVIOUSLY SHOWN ON PLAT Nos. 16125 AND 16126.

Patton Harris Rust & Associates, pc
ENGINEERING • ENVIRONMENTAL SERVICES • PLANNING • SURVEYING
8818 Centre Park Drive, Columbia, MD 21045
tel 410.997.8900 fax 410.997.9282

RECORDED AS PLAT NUMBER 18177
3-29-06 AMONG THE
LAND RECORDS OF HOWARD COUNTY, MARYLAND.

THE REQUIREMENTS OF SECTION 3-106, THE REAL PROPERTY ARTICLE, ANNOTATED CODE OF MARYLAND, 1988 REPLACEMENT VOLUME (AS SUPPLEMENTED) AS FAR AS THEY RELATE TO THE MAKING OF THIS PLAT AND THE SETTING OF MARKERS HAVE BEEN COMPLIED WITH.

A. Botto 3/08/06
ARTHUR M. BOTTERILL
PROFESSIONAL LAND SURVEYOR #10286
DATE

Chuck Nightingale 3/19/06
CHUCK NIGHTINGALE ACTING DIRECTOR
OF FACILITIES
DATE

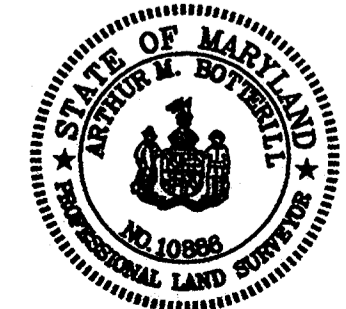
APPROVED: *[Signature]* 3/22/06
BRIEF, DEVELOPMENT ENGINEERING DIVISION
DATE

[Signature] 3/24/06
DIRECTOR
DATE

SURVEYOR'S CERTIFICATE

I HEREBY CERTIFY THAT THE FINAL EASEMENT SHOWN HEREON ARE CORRECT; THAT THEY DEFINE FOREST CONSERVATION EASEMENTS ON PART OF THE LANDS CONVEYED BY THE HOWARD RESEARCH AND DEVELOPMENT CORPORATION TO BOARD OF HOWARD COMMUNITY COLLEGE BY DEED DATED APRIL 19, 1988 AND RECORDED AMONG THE LAND RECORDS OF HOWARD COUNTY, MARYLAND IN LIBER 486 AT FOLIO 219 AND INQUISSION MADE BY THE BOARD OF TRUSTEES OF HOWARD COMMUNITY COLLEGE VS. SAMUEL AUGUSTUS COOK, ET AL., BY THE DEED DATED OCTOBER 8, 1964 AND RECORDED AMONG THE LAND RECORDS OF HOWARD COUNTY, MARYLAND IN LIBER 523 AT FOLIO 324.

A. Botto 3/08/06
ARTHUR M. BOTTERILL
PROFESSIONAL LAND SURVEYOR
MD REGISTRATION No. 10286
DATE



OWNER'S CERTIFICATE

BOARD OF HOWARD COMMUNITY COLLEGE, BY CHUCK NIGHTINGALE, ACTING DIRECTOR OF FACILITIES/CAPITAL PROJECTS OWNER OF THE PROPERTY SHOWN AND DESCRIBED HEREON, HEREBY ADOPT THIS PLAT; AND IN CONSIDERATION OF THE APPROVAL OF THIS PLAT OF FOREST CONSERVATION EASEMENT SHOWN HEREON, WITNESS MY HAND THIS 4th DAY OF MARCH, 2006.

BOARD OF HOWARD COMMUNITY COLLEGE
Chuck Nightingale
CHUCK NIGHTINGALE, ACTING DIRECTOR
OF FACILITIES

Heady van Antwerp
WITNESS

PLAT OF REVISION
FOREST CONSERVATION
EASEMENT PLAT
PROPERTY OF HOWARD
COMMUNITY COLLEGE
SDP-01-58
5TH ELECTION DISTRICT HOWARD COUNTY, MARYLAND
TAX MAP No. 35 PARCEL 47 ZONED: POR & NT
GRID No. 6 & 12
SCALE: 1" = 200' DATE: 03-08-06 SHEET 1 OF 2
0016111-0-SURVEY/WORK AREA/PLATS-REV.DWG
F-06-178

TABULATION CHART FOR FOREST CONSERVATION EASEMENT AREA THIS SHEET

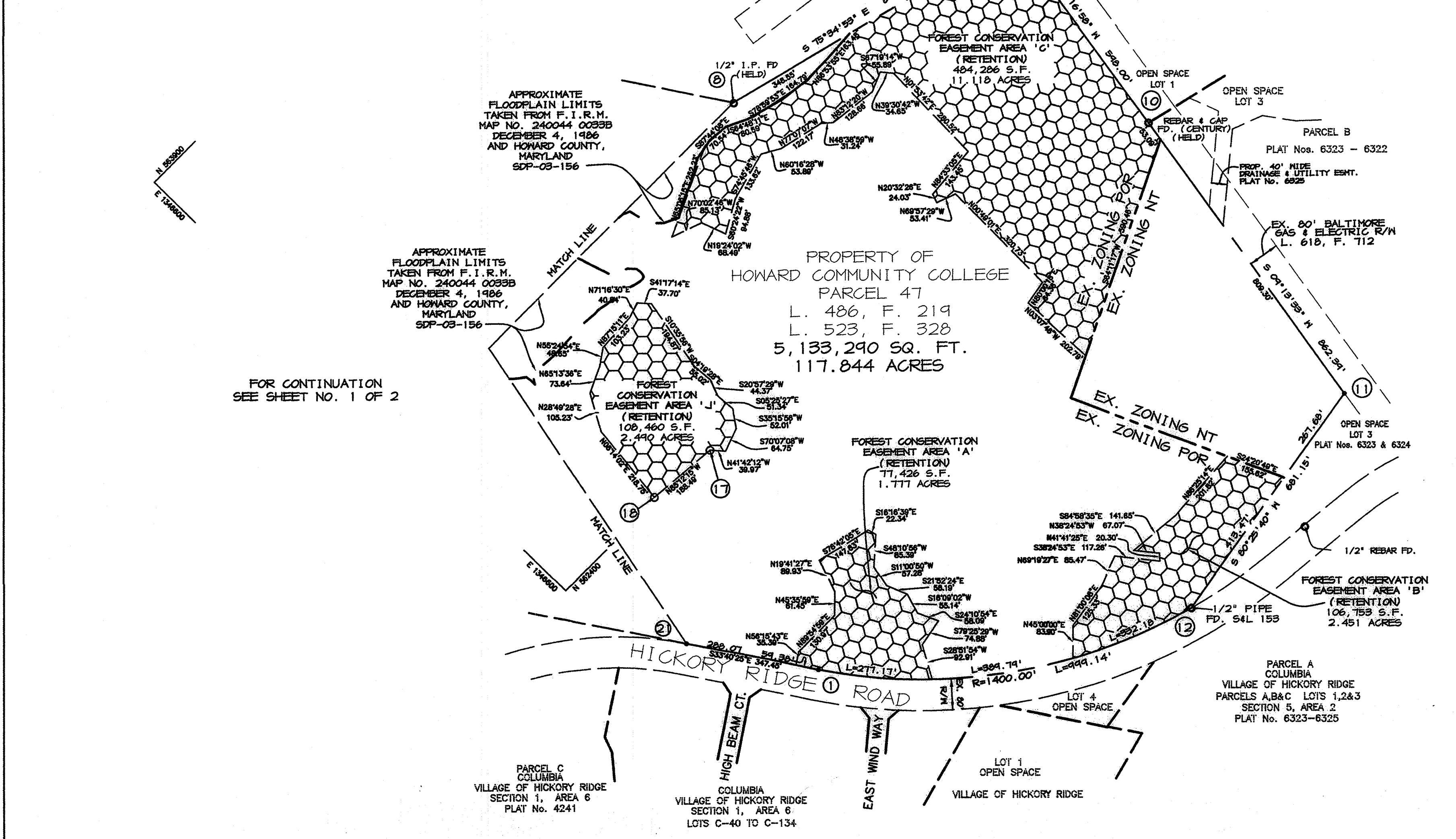
AREA	SQ. FEET	ACRES
A	77,426	1.777
B	106,753	2.451
C	484,270	11.117
J	108,460	2.440
TOTALS	776,909	17.885

CURVE DATA

CURVE	RADIUS	LENGTH	TANGENT	BEARING	CHORD	DELTA
12-1	1400.00'	999.14'	521.91'	N 54°07'08" W	978.07'	40°53'26"

COORDINATE DATA

No.	NORTH	EAST
1	561793.944	1346445.714
2	562484.248	1347199.988
3	562774.814	1348614.577
10	562184.641	1348518.113
11	561333.411	1348379.844
12	561220.148	1347708.183
17	562342.348	1347120.614
18	562408.157	1346432.783



FOR CONTINUATION SEE SHEET NO. 1 OF 2

Patton Harris Rust & Associates, pc
 ENGINEERING • ENVIRONMENTAL SERVICES • PLANNING • SURVEYING
 8818 Centre Park Drive, Columbia, MD 21045
 tel 410.997.8900 fax 410.997.8282

RECORDED AS PLAT NUMBER 18178
3-29-06 AMONG THE
 LAND RECORDS OF HOWARD COUNTY, MARYLAND.

THE REQUIREMENTS OF SECTION 3-106, THE REAL PROPERTY ARTICLE, ANNOTATED CODE OF MARYLAND, 1986 REPLACEMENT VOLUME (AS SUPPLEMENTED) AS FAR AS THEY RELATE TO THE MAKING OF THIS PLAT AND THE SEPTIMS OF MARKERS HAVE BEEN COMPLIED WITH.

A. Botterill 3/08/06
 ARTHUR M. BOTTERILL
 PROFESSIONAL LAND SURVEYOR #10886
 DATE

C. Nightingale 3/9/06
 BOARD OF HOWARD COMMUNITY COLLEGE
 BY: CHUCK NIGHTINGALE, ACTING DIRECTOR OF FACILITIES
 DATE

APPROVED: HOWARD COUNTY DEPARTMENT OF PLANNING AND ZONING.
[Signature] 3/21/06
 CHIEF DEVELOPMENT ENGINEERING DIVISION
 DATE
 DIRECTOR

SURVEYOR'S CERTIFICATE

I HEREBY CERTIFY THAT THE FINAL EASEMENT SHOWN HEREON ARE CORRECT; THAT THEY DEFINE FOREST CONSERVATION EASEMENTS ON PART OF THE LANDS CONVEYED BY THE HOWARD RESEARCH AND DEVELOPMENT CORPORATION TO BOARD OF HOWARD COMMUNITY COLLEGE BY DEED DATED APRIL 18, 1968 AND RECORDED AMONG THE LAND RECORDS OF HOWARD COUNTY, MARYLAND IN LIBER 486 AT FOLIO 219 AND INQUISITION MADE BY THE BOARD OF TRUSTEES OF HOWARD COMMUNITY COLLEGE VS. SAMUEL AUGUSTUS COOK, ET AL., BY THE DEED DATED OCTOBER 8, 1969 AND RECORDED AMONG THE LAND RECORDS OF HOWARD COUNTY, MARYLAND IN LIBER 523 AT FOLIO 329.

A. Botterill 3/08/06
 ARTHUR M. BOTTERILL
 PROFESSIONAL LAND SURVEYOR
 MD REGISTRATION No. 10886
 DATE



OWNER'S CERTIFICATE

BOARD OF HOWARD COMMUNITY COLLEGE, BY CHUCK NIGHTINGALE, ACTING DIRECTOR OF FACILITIES/CAPITAL PROJECTS OWNER OF THE PROPERTY SHOWN AND DESCRIBED HEREON, HEREBY ADOPT THIS PLAT; AND IN CONSIDERATION OF THE APPROVAL OF THIS PLAT OF FOREST CONSERVATION EASEMENT SHOWN HEREON. WITNESS MY HAND THIS 3rd DAY OF March, 2006.

C. Nightingale
 BOARD OF HOWARD COMMUNITY COLLEGE
 CHUCK NIGHTINGALE, ACTING DIRECTOR OF FACILITIES

Wendy Ann Rotter
 WITNESS

PLAT OF REVISION
 FOREST CONSERVATION
 EASEMENT PLAT
 PROPERTY OF HOWARD
 COMMUNITY COLLEGE

SDP-01-58
 5TH ELECTION DISTRICT HOWARD COUNTY, MARYLAND
 TAX MAP No. 35 PARCEL 47 ZONED: POR & NT
 GRID No. 6 & 12
 SCALE: 1" = 200' DATE: 03-08-06 SHEET 2 OF 2
 001611-0-SURVEYWORK AREA FOR PLAT 4-REV.DWG

F-06-178