

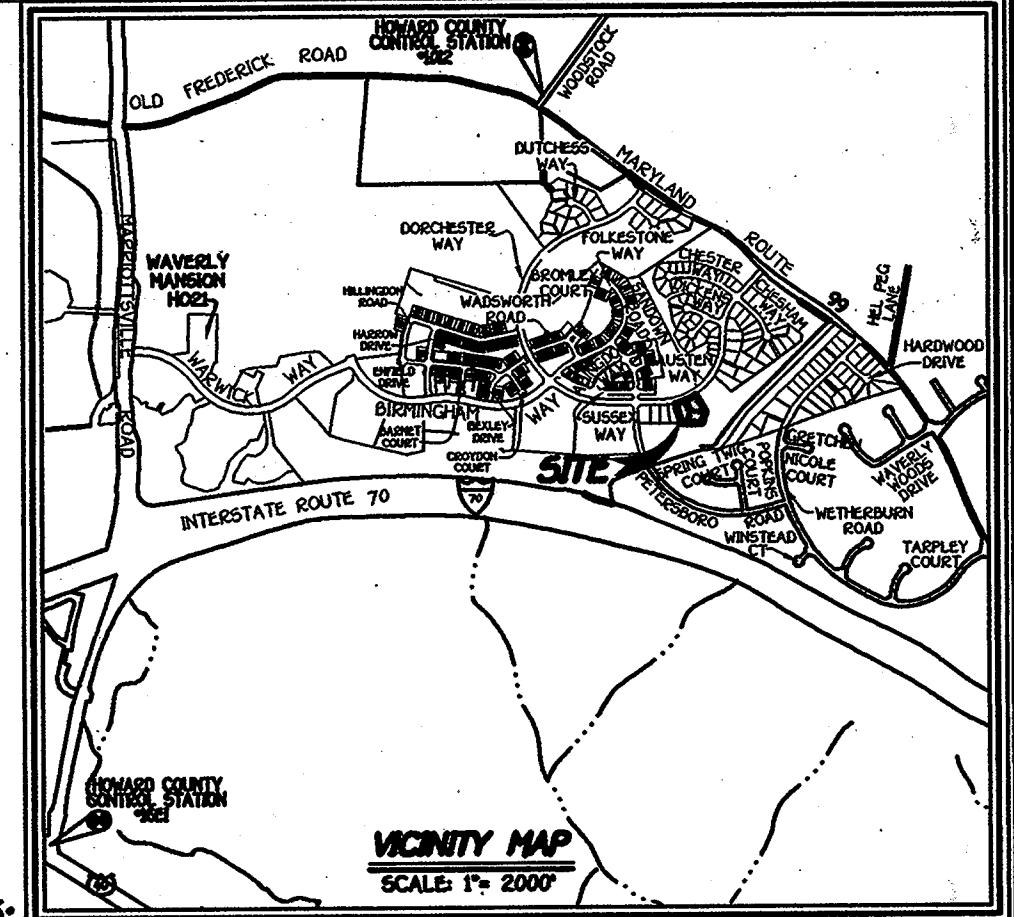
US EQUIVALENT COORDINATE TABULATION		
POINT	NORTH	EAST
1144	597622.9140	1346962.7944
1155	597623.3188	1346756.9589
1156	597826.6460	1346694.4727
6350	597741.2793	1347007.3432
6361	597918.8739	1346908.0794

METRIC COORDINATE TABULATION		
POINT	NORTH	EAST
550	102155.8295	410555.0908
551	102155.9519	410492.9517
5001	102217.9261	410473.2962
5002	102191.9063	410568.5984
5004	102246.0373	410536.4037

Curve Data Tabulation					
CURVE	RADIUS	ARC	TANGENT	DELTA	CHORD
1156-6361	680.00	233.02	118.07	19°42'04"	N66°38'49"E 232.67'

Reservation Of Public Utility Easements

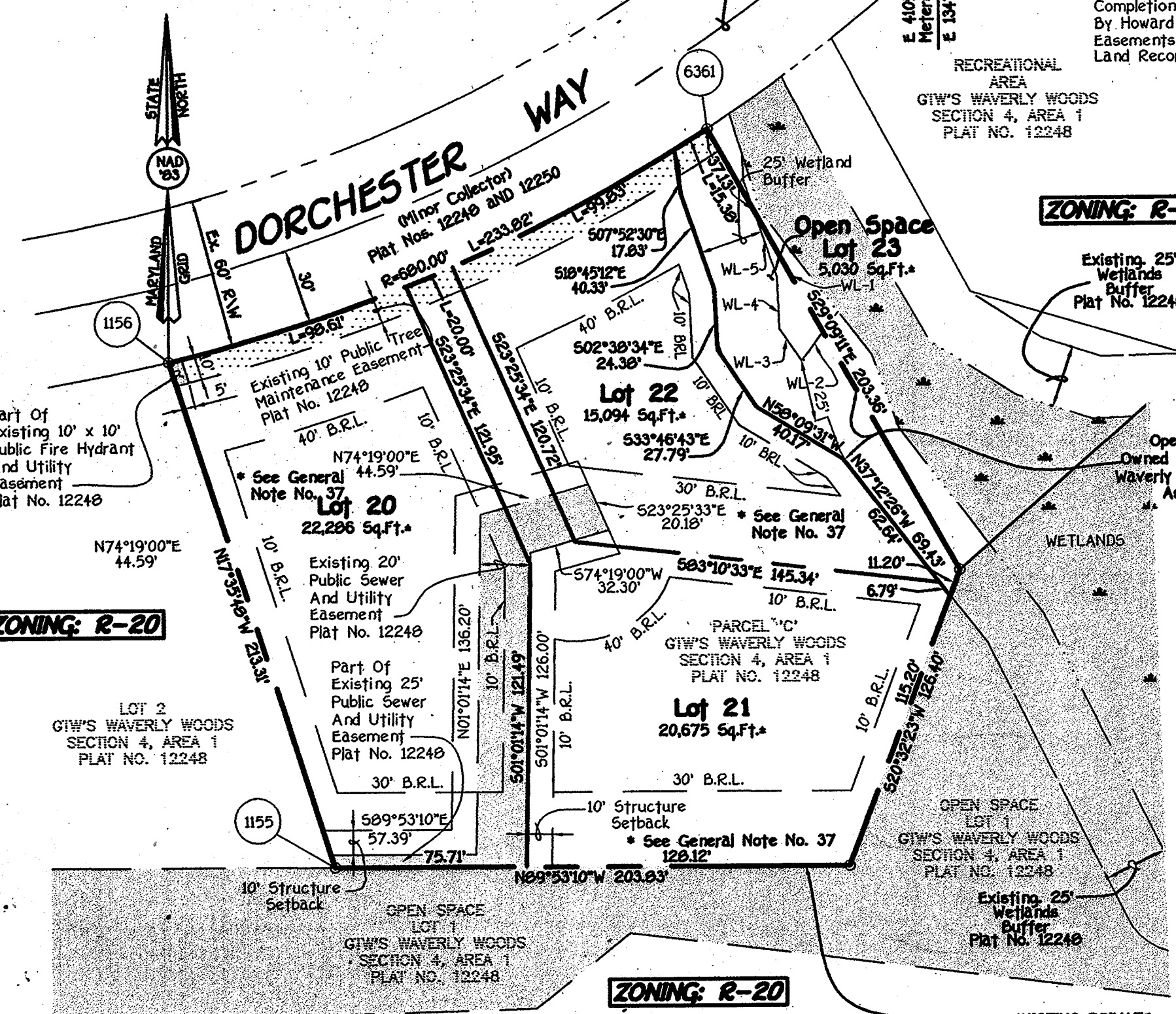
Developer Reserves Unto Itself, Its Successors And Assigns, All Easements Shown On This Plan For Water, Sewer, Storm Drainage, Other Public Utilities, Located In, On, Over, And Through Lots 20 Thru 23. Any Conveyances Of The Aforesaid Lots Shall Be Subject To The Easements Herein Reserved, Whether Or Not Expressly Stated In The Deeds Conveying Said Lot(s). Developer Shall Execute And Deliver Deeds For The Easements Herein Reserved To Howard County. Upon Completion Of The Public Utilities And Their Acceptance By Howard County, The County Shall Accept The Easements And Record The Deeds Of Easement In The Land Records Of Howard County.



WETLAND TABULATION	
NO.	BEARING AND DISTANCE
WL-1	S29°09'11"E 56.20'
WL-2	S36°30'21"W 14.55'
WL-3	N33°46'43"W 13.43'
WL-4	N02°38'34"W 20.95'
WL-5	N10°45'12"W 20.54'

GENERAL NOTES:

- Subject Property Zoned R-20 Per 10/10/93 Comprehensive Zoning Plan.
- Coordinates Based On Nad 83, Maryland Coordinate System As Projected By Howard County Geodetic Control Stations No. 1012 And No. 16E1. Spt. 1012 N 601060.1777 E 1345336.7260 Spt. 16E1 N 593250.3922 E 134092.7110
- This Plat Is Based On Field Run Monumented Boundary Survey Performed On Or About August, 1990, By Fisher, Collins And Carter, Inc.
- B.R.L. Denotes Building Restriction Line.
- Denotes Iron Pin Set Capped T.C.C. 106."
- Denotes Iron Pipe Or Iron Bar Found.
- Denotes Angular Change In Bearing Or Right-Of-Way.
- Denotes Concrete Monument Set With Aluminum Plat T.C.C. 106."
- Denotes Concrete Monument Or Stone Found.
- All Lot Areas Are More Or Less (±).
- Denotes Public Tree Maintenance Easement. A Public Tree Maintenance Easement Ten Feet In Width Running Along The Edge Of The Public Road Right-Of-Way As Shown On This Plat Is Reserved Upon All Lots Fronting On The Said Public Road Right-Of-Way. This Easement Allows Howard County The Right To Access The Property, When Necessary, For The Specific Purpose Of Installation, Repair And Maintenance Of County-Owned Trees Located Within The Boundaries Of Private Lots. No Building Of Any Kind Shall Be Located On Or Over The Said Easement Area.
- Distances Shown Are Based On Surface Measurement And Not Reduced To Nad 83' Grid Measurement.
- Declaration Of Covenants Of Waverly Homeowner's Association, Inc. Filed With Maryland State Department Of Assessments And Taxation On February 6, 1996, As Account #D420107.
- Master Declaration Of Covenants And Restrictions In Liber 4067 At Folio 422.
- Traffic Report Prepared By The Traffic Group.
- Previous Department Planning And Zoning File Nos. 594-07, P95-07 And P95-173.
- Wetland Locations Determined By Environmental Systems Analysis On September 5, 1991 And Approved On November 30, 1993 Under 5-94-07.
- No Wetlands Within Limits Of This Submission.
- Forest Conservation Obligation Provided Under GTW Waverly Woods, Section 4, Area 1, P95-173.
- Storm Water Management For This Subdivision Is Provided By The Existing Wet Pool Design Facility Constructed At The Northwest Corner Of The Intersection Of Dorchester Way And Maryland Route 99 In Open Space Lot 2L Section 4, Area 2, GTW's Waverly Woods (P-95-174).
- This Plat Is Subject To Zoning Board Case No. Z9929-M, Which Approved On March 22, 1993, A Request To Rezone 682.18 Acres Of Rural Land Into The Mixed Use Area.
- Perimeter Landscaping Is Not Required For This Resubdivision Since These Lots Are Internal To The Site.
- For Flag Or Pipestem Lots, Refuse Collection, Snow Removal And Road Maintenance Are Provided To The Junction Of The Flag Or Pipestem And Road Right-Of-Way Line And Not Onto The Pipestem Lot Driveway.
- Driveway(s) Shall Be Provided Prior To Issuance Of A Residential Occupancy Permit For Any New Dwelling To Insure Safe Access For Fire And Emergency Vehicles Per The Following Minimum Requirements:
 - Width - 12 Feet (8 Feet Serving More Than One Residence)
 - Surface - Six (6) Inches Of Compacted Crusher Run Base With Tar And Chip Coating. 0-1/2" Minimum
 - Geometry - Maximum 15% Grade, Maximum 10% Grade Change And 45-Foot Turning Radius
 - Structures (Culverts/Bridges) - Capable Of Supporting 25 Gross Tons (4-125-Loading)
 - Drainage Elements - Capable Of Safely Passing 100 Year Flood With No More Than 1 Foot Depth Over Surface
 - Structure Clearances - Minimum 12 Feet
 - Maintenance - Sufficient To Ensure All Weather Use.
- No Grading, Removal Of Vegetative Cover Or Trees, Or Placement Of New Structures Is Permitted Within The Limits Of Wetlands, Stream (s), Or Their Buffers And Forest Conservation Easement Areas.
- No 100 Year Floodplain Exists On Site.
- No Cemeteries Exist On Site By Visual Observation.
- For Open Space Tabulation See Sheet 2.
- GENERAL NOTES CONTINUED SEE THIS SHEET



GENERAL NOTES CONTINUED:

- Lots 20, 21 And 22 Require The Submission And Approval Of A Site Development Plan In Accordance With Section 16.155(A)(2)(XII) Of The Subdivision Regulations.
- This Plat Is In Compliance With The Fifth Edition Of The Subdivision And Land Development Regulations.
- The Open Space Shown Hereon Is Hereby Dedicated To A Property Owners Association For The Residents Of This Subdivision And Recording References Of The Articles Of Incorporation And Restrictions Are Shown Hereon.
- For Recreational Area, See Tabulation On Sheet 3.
- Water And Sewer Service To These Lots Will Be Granted Under The Provisions Of Section 18.122.B Of The Howard County Code.
- Public Water And Sewerage Allocations Will Be Granted At Time Of Issuance Of The Building Permit If Capacity Is Available At That Time.
- Gravity Sewer Service, First Floor Only, For Lots 20, 21 And 22. Basement Sewer Service Shall Be Provided By Private On-Site Pump.

OWNER AND DEVELOPER
 WAVERLY WOODS DEVELOPMENT CORPORATION
 c/o LAND DESIGN AND DEVELOPMENT, INC.
 8000 MAIN STREET
 ELLICOTT CITY, MARYLAND 21043

Minimum Lot Size Chart			
Lot No.	Gross Area	Pipestem Area	Minimum Lot Size
Lot 21	20,675 Sq.Ft.	2416 Sq.Ft.	18,259 Sq.Ft.

The Requirements §3-106, The Real Property Article, Annotated Code Of Maryland, 1986 Replacement Volume, (As Supplemented As Far As They Relate To The Making Of This Plat And The Setting Of Markers Have Been Complied With

Terrell A. Fisher, L.S. #10692 9/3/03 Date
 (Registered Land Surveyor)

Bruce Taylor, Secretary 9/1/03 Date
 Waverly Woods Development Corporation

Kennard Warfield, Jr., Vice-President 9-6-03 Date
 Waverly Woods Development Corporation

Area Tabulation

Total Number Of Buildable Lots To Be Recorded	3
Total Number Of Open Space Lots To Be Recorded	1
Total Number Of Plat Parcels To Be Recorded	0
Total Number Of Lots/Parcels To Be Recorded	4
Total Area Of Buildable Lots To Be Recorded	1,333 Ac.
Total Area Of Open Space Lots To Be Recorded	0.015 Ac.
Total Area Of Plat Parcels To Be Recorded	0.000 Ac.
Total Area Of Lots/Parcels To Be Recorded	1,448 Ac.
Total Area Of Roadway To Be Recorded	0.000 Ac.
Total Area To Be Recorded	1,448 Ac.

APPROVED: For Public Water And Public Sewerage Systems In Conformance With The Master Plan Of Water And Sewerage For Howard County.

Penny Brenstein M.D. J.S.M. 9/29/03 Date
 Howard County Health Officer

APPROVED: Howard County Department Of Planning And Zoning.

Chad O'Connell 9/23/03 Date
 Chief, Development Engineering Division

James D. Doyle 9/30/03 Date
 Director

OWNER'S CERTIFICATE

Waverly Woods Development Corporation By Bruce Taylor, Secretary And Kennard Warfield, Jr., Vice President, Owners Of The Property Shown And Described Hereon, Hereby Adopt This Plan Of Subdivision, And In Consideration Of The Approval Of This Final Plat By The Department Of Planning And Zoning, Establish The Minimum Building Restriction Lines And Grant Unto Howard County, Maryland, Its Successors And Assigns: (1) The Right To Lay, Construct And Maintain Sewers, Drains, Water Pipes And Other Municipal Utilities And Services In And Under All Roads And Street Rights-Of-Way And The Specific Easement Areas Shown Hereon; (2) The Right To Require Dedication For Public Use The Beds Of The Streets And/Or Roads And Floodplains And Open Space Where Applicable And For Good And Other Valuable Consideration, Hereby Grant The Right And Option To Howard County To Acquire The Fee Simple Title To The Beds Of The Streets And/Or Roads And Floodplains, Storm Drainage Facilities And Open Space Where Applicable; (3) The Right To Require Dedication Of Waterways And Drainage Easements For The Specific Purpose Of Their Construction, Repair And Maintenance; And (4) That No Building Or Similar Structure Of Any Kind Shall Be Erected On Or Over The Said Easements And Rights-Of-Way. Witness Our Hands This 30th Day Of Sept., 2003.

BY: Kennard Warfield, Jr., Vice-President
 Waverly Woods Development Corporation

BY: Bruce Taylor, Secretary
 Waverly Woods Development Corporation

Robert Webster Witness
Robert Webster Witness

SURVEYOR'S CERTIFICATE

I Hereby Certify That The Final Plat Shown Hereon Is Correct: That It Is A Subdivision Of Part Of The Lands Conveyed By G.T.W. Joint Venture, A Maryland General Partnership To Waverly Woods Development Corporation, A Maryland Corporation By Deed Dated November 1, 1996 And Recorded In The Land Records Of Howard County, Maryland In Liber No. 3991 At Folio 171, And Also Being Parcel 'C' As Shown On Plat Entitled "GTW's Waverly Woods, Section 4, Area 1, Lots 1 Thru 19, Parcels A Thru E" Recorded As Plat No. 12248 And That All Monuments Are In Place Or Will Be In Place Prior To Acceptance Of The Streets In The Subdivision By Howard County, Maryland As Shown, In Accordance With The Annotated Code Of Maryland, As Amended, And Monumentation Is In Accordance With The Howard County Subdivision Regulations.

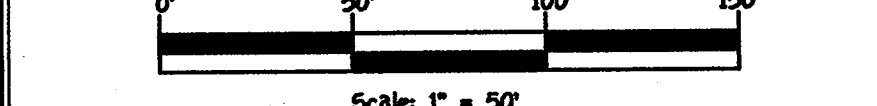
Terrell A. Fisher 9/3/03 Date
 Terrell A. Fisher, L.S. #10692 Land Surveyor No. 10692

RECORDED AS PLAT No. 116222 ON 10/01/03
 AMONG THE LAND RECORDS OF HOWARD COUNTY, MARYLAND.

GTW'S WAVERLY WOODS
 Section 4, Area 1
 Lots 20 Thru 22 And Open Space Lot 23

(A Resubdivision Of Parcel 'C', GTW's Waverly Woods, Section 4, Area 1 - Plat No. 12248)

Zoning: R-20
 Tax Map No.: 16 Part Of Parcel: 417 Grid: 6
 Third Election District: Howard County, Maryland



Scale: 1" = 50'
 Date: September 3, 2003
 Sheet 1 Of 5

F-04-06

DENSITY TABULATIONS R-A-15 ZONING

SECTION, AREA (F NUMBER)	No. OF DWELLING UNITS	LOT AREA	PARCEL AREA	OPEN SPACE AREA	NON-BUILDABLE GOLF COURSE AREA	ROAD RIGHT-OF-WAY AREA	TOTAL R-A-15 AREA	FLOODPLAIN AREA	STEEP SLOPE AREA	NET AREA
SECTION 3, AREA 1 (F94-125)	0	0.000 Ac.	0.000 Ac.	0.000 Ac.	0.000 Ac.	0.000 Ac.	0.000 Ac.	0.000 Ac.	0.000 Ac.	0.000 Ac.
SECTION 3, AREA 2 (F95-27)	0	0.000 Ac.	0.000 Ac.	0.000 Ac.	0.000 Ac.	0.000 Ac.	0.000 Ac.	0.000 Ac.	0.000 Ac.	0.000 Ac.
SECTION 4, AREA 1 (F95-173)	184	0.000 Ac.	17,292 Ac.	10,281 Ac.	5,407 Ac.	1,690 Ac.	34,660 Ac.	0.000 Ac.	0.000 Ac.	34,660 Ac.
SECTION 4, AREA 2 (F95-174)	0	0.000 Ac.	0.000 Ac.	0.000 Ac.	0.000 Ac.	0.000 Ac.	0.000 Ac.	0.000 Ac.	0.000 Ac.	0.000 Ac.
SECTION 5 (F96-179)	104	0.000 Ac.	7,674 Ac.	1,972 Ac.	0.161 Ac.	0.637 Ac.	10,444 Ac.	0.000 Ac.	0.000 Ac.	10,444 Ac.
SECTION 6 (F98-28)	0	0.000 Ac.	0.000 Ac.	0.000 Ac.	0.000 Ac.	0.000 Ac.	0.000 Ac.	0.000 Ac.	0.000 Ac.	0.000 Ac.
SECTION 7 (F97-180)	0	0.000 Ac.	0.000 Ac.	0.000 Ac.	0.000 Ac.	0.000 Ac.	0.000 Ac.	0.000 Ac.	0.000 Ac.	0.000 Ac.
SECTION 8 (F98-25)	0	0.000 Ac.	0.000 Ac.	0.000 Ac.	0.000 Ac.	0.000 Ac.	0.000 Ac.	0.000 Ac.	0.000 Ac.	0.000 Ac.
SECTION 9 (F99-28)	0	0.000 Ac.	0.000 Ac.	0.000 Ac.	0.000 Ac.	0.000 Ac.	0.000 Ac.	0.000 Ac.	0.000 Ac.	0.000 Ac.
SECTION 10 (F00-06)	0	0.000 Ac.	0.000 Ac.	0.000 Ac.	0.000 Ac.	0.000 Ac.	0.000 Ac.	0.000 Ac.	0.000 Ac.	0.000 Ac.
RESUBDIVISION SECT 4, AREA 1 (F99-79)	0	0.000 Ac.	0.355 Ac.	-0.355 Ac.	0.000 Ac.	0.000 Ac.	0.000 Ac.	0.000 Ac.	0.000 Ac.	0.000 Ac.
REVISION SECTION 5 (F99-202)	12	0.000 Ac.	-1,870 Ac.	1,870 Ac.	0.000 Ac.	0.000 Ac.	0.000 Ac.	0.000 Ac.	0.000 Ac.	0.000 Ac.
RESUBDIVISION SECTION 6 (F99-174)	0	0.000 Ac.	0.030 Ac.	-0.030 Ac.	0.000 Ac.	0.000 Ac.	0.000 Ac.	0.000 Ac.	0.000 Ac.	0.000 Ac.
TOTALS	300	0.000 Ac.	23,471 Ac.	13,738 Ac.	5,568 Ac.	2,327 Ac.	45,104 Ac.	0.000 Ac.	0.000 Ac.	45,104 Ac.

NET AREA OF R-A-15 ZONED PROPERTY = 45,104 Acres
 ALLOWABLE DWELLING UNITS FOR R-A-15 ZONED PROPERTY = 676
 (45,104 Ac. x 15 UNITS/NET ACRE) = 676.56 DWELLING UNITS
 PROPOSED DWELLING UNITS FOR RSC ZONED PROPERTY = 300

DENSITY TABULATIONS RSC ZONING

SECTION, AREA (F NUMBER)	No. OF DWELLING UNITS	LOT AREA	PARCEL AREA	OPEN SPACE AREA	NON-BUILDABLE GOLF COURSE AREA	ROAD RIGHT-OF-WAY AREA	TOTAL RSC AREA	FLOODPLAIN AREA	STEEP SLOPE AREA	NET AREA
SECTION 3, AREA 1 (F94-125)	0	0.000 Ac.	0.000 Ac.	0.000 Ac.	0.000 Ac.	0.000 Ac.	0.000 Ac.	0.000 Ac.	0.000 Ac.	0.000 Ac.
SECTION 3, AREA 2 (F95-27)	0	0.000 Ac.	0.000 Ac.	0.000 Ac.	0.000 Ac.	0.000 Ac.	0.000 Ac.	0.000 Ac.	0.000 Ac.	0.000 Ac.
SECTION 4, AREA 1 (F95-173)	0	0.000 Ac.	0.000 Ac.	0.000 Ac.	0.000 Ac.	1,566 Ac.	1,566 Ac.	0.000 Ac.	0.000 Ac.	1,566 Ac.
SECTION 4, AREA 2 (F95-174)	0	0.000 Ac.	0.000 Ac.	0.000 Ac.	0.000 Ac.	0.000 Ac.	0.000 Ac.	0.000 Ac.	0.000 Ac.	0.000 Ac.
SECTION 5 (F96-179)	22	4,487 Ac.	0.000 Ac.	4,444 Ac.	2,165 Ac.	0.933 Ac.	12,029 Ac.	0.000 Ac.	0.000 Ac.	12,029 Ac.
SECTION 6 (F01-49) Lots 103 - 113 *See Note No. 1 Below	9	1,683 Ac.	-1,695 Ac.	0.012 Ac.	0.000 Ac.	0.000 Ac.	0.000 Ac.	0.000 Ac.	0.000 Ac.	0.000 Ac.
SECTION 6 (F98-28)	27	5,456 Ac.	1,695 Ac.	2,960 Ac.	0.000 Ac.	0.923 Ac.	11,034 Ac.	0.000 Ac.	0.000 Ac.	11,034 Ac.
SECTION 7 (F97-180)	0	0.000 Ac.	0.000 Ac.	0.000 Ac.	0.000 Ac.	0.000 Ac.	0.000 Ac.	0.000 Ac.	0.000 Ac.	0.000 Ac.
SECTION 8 (F98-25)	0	0.000 Ac.	0.000 Ac.	0.000 Ac.	0.000 Ac.	0.000 Ac.	0.000 Ac.	0.000 Ac.	0.000 Ac.	0.000 Ac.
SECTION 9 (F99-28)	0	0.000 Ac.	0.000 Ac.	0.000 Ac.	0.000 Ac.	0.000 Ac.	0.000 Ac.	0.000 Ac.	0.000 Ac.	0.000 Ac.
SECTION 10 (F00-06)	0	0.000 Ac.	0.000 Ac.	0.000 Ac.	0.000 Ac.	0.000 Ac.	0.000 Ac.	0.000 Ac.	0.000 Ac.	0.000 Ac.
SECTION 11, AREA 1 (F01-91)	0	0.000 Ac.	0.000 Ac.	0.000 Ac.	0.000 Ac.	0.515 Ac.	0.515 Ac.	0.000 Ac.	0.000 Ac.	0.515 Ac.
SECTION 11, AREA 4 (F01-93)	51	9,282 Ac.	0.000 Ac.	12,067 Ac.	10,112 Ac.	2,150 Ac.	33,611 Ac.	1,669 Ac.	0.000 Ac.	31,942 Ac.
SECTION 12 (F01-31)	0	0.000 Ac.	0.000 Ac.	0.000 Ac.	0.000 Ac.	0.000 Ac.	0.000 Ac.	0.000 Ac.	0.000 Ac.	0.000 Ac.
RESUBDIVISION SECT 4, AREA 1 (F99-79)	0	0.000 Ac.	0.000 Ac.	0.000 Ac.	0.000 Ac.	0.000 Ac.	0.000 Ac.	0.000 Ac.	0.000 Ac.	0.000 Ac.
REVISION SECTION 5 (F99-202)	0	0.000 Ac.	0.000 Ac.	0.000 Ac.	0.000 Ac.	0.000 Ac.	0.000 Ac.	0.000 Ac.	0.000 Ac.	0.000 Ac.
RESUBDIVISION SECTION 6 (F99-174)	0	0.000 Ac.	0.000 Ac.	0.000 Ac.	0.000 Ac.	0.000 Ac.	0.000 Ac.	0.000 Ac.	0.000 Ac.	0.000 Ac.
TOTALS	109	20,908 Ac.	0.000 Ac.	19,483 Ac.	12,277 Ac.	6,087 Ac.	58,755 Ac.	1,669 Ac.	0.000 Ac.	57,086 Ac.

NET AREA OF RSC ZONED PROPERTY = 57,086 Acres
 ALLOWABLE DWELLING UNITS FOR RSC ZONED PROPERTY = 228
 (57,086 Ac. x 4 UNITS/NET ACRE) = 228.34 DWELLING UNITS
 PROPOSED DWELLING UNITS FOR RSC ZONED PROPERTY = 109

* NOTE No. 1: AREA OF PARCEL B RECORDED IN SECTION 6 (F98-28) IS BEING RESUBDIVIDED TO CREATE LOTS 103 - 113. THE AREA OF THIS RESUBDIVISION IS INCLUDED IN SECTION 6 (F98-28)

OWNER AND DEVELOPER

WAVERLY WOODS DEVELOPMENT CORPORATION
 c/o LAND DESIGN AND DEVELOPMENT, INC.
 8000 MAIN STREET
 ELLICOTT CITY, MARYLAND 21043

FISHER, COLLINS & CARTER, INC.
 CIVIL ENGINEERING CONSULTANTS & LAND SURVEYORS
 CENTENNIAL SQUARE OFFICE PARK - 10272 BALTIMORE NATIONAL PIKE
 ELLICOTT CITY, MARYLAND 21042
 (410) 461 - 2955

DENSITY TABULATIONS PEC ZONING

SECTION, AREA (F NUMBER)	No. OF DWELLING UNITS	LOT AREA	PARCEL AREA	OPEN SPACE AREA	NON-BUILDABLE GOLF COURSE AREA	ROAD RIGHT-OF-WAY AREA	TOTAL PEC AREA	FLOODPLAIN AREA	STEEP SLOPE AREA	NET AREA
SECTION 3, AREA 1 (F94-125)	0	0.000 Ac.	0.000 Ac.	0.000 Ac.	0.000 Ac.	0.000 Ac.	0.000 Ac.	0.000 Ac.	0.000 Ac.	0.000 Ac.
SECTION 3, AREA 2 (F95-27)	0	0.000 Ac.	0.000 Ac.	0.000 Ac.	0.000 Ac.	0.000 Ac.	0.000 Ac.	0.000 Ac.	0.000 Ac.	0.000 Ac.
SECTION 4, AREA 1 (F95-173)	0	0.000 Ac.	0.000 Ac.	0.000 Ac.	0.000 Ac.	0.000 Ac.	0.000 Ac.	0.000 Ac.	0.000 Ac.	0.000 Ac.
SECTION 4, AREA 2 (F95-174)	0	0.000 Ac.	0.000 Ac.	0.000 Ac.	0.000 Ac.	0.000 Ac.	0.000 Ac.	0.000 Ac.	0.000 Ac.	0.000 Ac.
SECTION 5 (F96-179)	0	0.000 Ac.	0.000 Ac.	0.000 Ac.	0.000 Ac.	0.000 Ac.	0.000 Ac.	0.000 Ac.	0.000 Ac.	0.000 Ac.
SECTION 6 (F98-28)	0	0.000 Ac.	0.000 Ac.	0.000 Ac.	0.000 Ac.	0.000 Ac.	0.000 Ac.	0.000 Ac.	0.000 Ac.	0.000 Ac.
SECTION 7 (F97-180)	0	0.000 Ac.	29,286 Ac.	19,417 Ac.	14,286 Ac.	4,242 Ac.	67,231 Ac.	0.000 Ac.	0.000 Ac.	67,231 Ac.
SECTION 8 (F98-25)	0	0.000 Ac.	0.000 Ac.	0.000 Ac.	0.000 Ac.	0.439 Ac.	0.439 Ac.	0.000 Ac.	0.000 Ac.	0.439 Ac.
SECTION 9 (F99-28)	0	0.000 Ac.	8,112 Ac.	0.000 Ac.	0.000 Ac.	0.000 Ac.	8,112 Ac.	0.000 Ac.	0.000 Ac.	8,112 Ac.
SECTION 10 (F00-06)	0	0.000 Ac.	0.000 Ac.	0.000 Ac.	0.000 Ac.	0.000 Ac.	0.000 Ac.	0.000 Ac.	0.000 Ac.	0.000 Ac.
RESUBDIVISION SECT 4, AREA 1 (F99-79)	0	0.000 Ac.	0.000 Ac.	0.000 Ac.	0.000 Ac.	0.000 Ac.	0.000 Ac.	0.000 Ac.	0.000 Ac.	0.000 Ac.
REVISION SECTION 5 (F99-202)	0	0.000 Ac.	0.000 Ac.	0.000 Ac.	0.000 Ac.	0.000 Ac.	0.000 Ac.	0.000 Ac.	0.000 Ac.	0.000 Ac.
RESUBDIVISION SECTION 6 (F99-174)	0	0.000 Ac.	0.000 Ac.	0.000 Ac.	0.000 Ac.	0.000 Ac.	0.000 Ac.	0.000 Ac.	0.000 Ac.	0.000 Ac.
TOTALS	0	0.000 Ac.	37,398 Ac.	19,417 Ac.	14,286 Ac.	4,720 Ac.	75,821 Ac.	0.000 Ac.	0.000 Ac.	75,821 Ac.

TABULATIONS B-1 ZONING

SECTION, AREA (F NUMBER)	No. OF DWELLING UNITS	LOT AREA	PARCEL AREA	OPEN SPACE AREA	NON-BUILDABLE GOLF COURSE AREA	ROAD RIGHT-OF-WAY AREA	TOTAL B-1 AREA	FLOODPLAIN AREA	STEEP SLOPE AREA	NET AREA
SECTION 3, AREA 1 (F94-125)	0	0.000 Ac.	0.000 Ac.	0.000 Ac.	0.000 Ac.	0.000 Ac.	0.000 Ac.	0.000 Ac.	0.000 Ac.	0.000 Ac.
SECTION 3, AREA 2 (F95-27)	0	0.000 Ac.	0.000 Ac.	0.000 Ac.	0.000 Ac.	0.000 Ac.	0.000 Ac.	0.000 Ac.	0.000 Ac.	0.000 Ac.
SECTION 4, AREA 1 (F95-173)	0	0.000 Ac.	0.000 Ac.	0.000 Ac.	0.000 Ac.	0.000 Ac.	0.000 Ac.	0.000 Ac.	0.000 Ac.	0.000 Ac.
SECTION 4, AREA 2 (F95-174)	0	0.000 Ac.	0.000 Ac.	0.000 Ac.	0.000 Ac.	0.000 Ac.	0.000 Ac.	0.000 Ac.	0.000 Ac.	0.000 Ac.
SECTION 5 (F96-179)	0	0.000 Ac.	0.000 Ac.	0.000 Ac.	0.000 Ac.	0.000 Ac.	0.000 Ac.	0.000 Ac.	0.000 Ac.	0.000 Ac.
SECTION 6 (F98-28)	0	0.000 Ac.	0.000 Ac.	0.000 Ac.	0.000 Ac.	0.000 Ac.	0.000 Ac.	0.000 Ac.	0.000 Ac.	0.000 Ac.
SECTION 7 (F97-180)	0	0.000 Ac.	0.000 Ac.	0.000 Ac.	0.000 Ac.	0.725 Ac.	0.725 Ac.	0.000 Ac.	0.000 Ac.	0.725 Ac.
SECTION 8 (F98-25)	0	0.000 Ac.	0.000 Ac.	0.000 Ac.	0.000 Ac.	0.270 Ac.	0.270 Ac.	0.000 Ac.	0.000 Ac.	0.270 Ac.
SECTION 9 (F99-28)	0	0.000 Ac.	7,469 Ac.	0.000 Ac.	0.000 Ac.	0.000 Ac.	7,469 Ac.	0.000 Ac.	0.000 Ac.	7,469 Ac.
SECTION 10 (F00-06)	0	0.000 Ac.	0.000 Ac.	0.000 Ac.	0.000 Ac.	0.000 Ac.	0.000 Ac.	0.000 Ac.	0.000 Ac.	0.000 Ac.
RESUBDIVISION SECT 4, AREA 1 (F99-79)	0	0.000 Ac.	0.000 Ac.	0.000 Ac.	0.000 Ac.	0.000 Ac.	0.000 Ac.	0.000 Ac.	0.000 Ac.	0.000 Ac.
REVISION SECTION 5 (F99-202)	0	0.000 Ac.	0.000 Ac.	0.000 Ac.	0.000 Ac.	0.000 Ac.	0.000 Ac.	0.000 Ac.	0.000 Ac.	0.000 Ac.
RESUBDIVISION SECTION 6 (F99-174)	0	0.000 Ac.	0.000 Ac.	0.000 Ac.	0.000 Ac.	0.000 Ac.	0.000 Ac.	0.000 Ac.	0.000 Ac.	0.000 Ac.
TOTALS	0	0.000 Ac.	7,469 Ac.	0.000 Ac.	0.000 Ac.	0.995 Ac.	8,464 Ac.	0.000 Ac.	0.000 Ac.	8,464 Ac.

DENSITY TABULATIONS R-SA-B ZONING

SECTION, AREA (F NUMBER)	No. OF DWELLING UNITS	LOT AREA	PARCEL AREA	OPEN SPACE AREA	NON-BUILDABLE GOLF COURSE AREA	ROAD RIGHT-OF-WAY AREA	TOTAL R-SA-B AREA	FLOODPLAIN AREA	STEEP SLOPE AREA	NET AREA
SECTION 3, AREA 1 (F94-125)	0	0.000 Ac.	0.000 Ac.	0.000 Ac.	0.000 Ac.	0.000 Ac.	0.000 Ac.	0.000 Ac.	0.000 Ac.	0.000 Ac.
SECTION 3, AREA 2 (F95-27)	0	0.000 Ac.	0.000 Ac.	0.000 Ac.	0.000 Ac.	0.000 Ac.	0.000 Ac.	0.000 Ac.	0.000 Ac.	0.000 Ac.
SECTION 4, AREA 1 (F95-173)	6	0.466 Ac.	0.000 Ac.	6,128 Ac.	0.000 Ac.	2,199 Ac.	8,793 Ac.	0.000 Ac.	0.000 Ac.	8,793 Ac.
SECTION 4, AREA 2 (F95-174)	0	0.000 Ac.	0.000 Ac.	0.000 Ac.	0.000 Ac.	0.033 Ac.	0.033 Ac.	0.000 Ac.	0.000 Ac.	0.033 Ac.
SECTION 5 (F96-179)	128	7,575 Ac.	0.000 Ac.	10,311 Ac.	0.000 Ac.	4,514 Ac.	22,400 Ac.	0.212 Ac.	0.000 Ac.	22,188 Ac.
SECTION 6 (F98-28)	66	3,433 Ac.	0.215 Ac.	4,116 Ac.	0.000 Ac.	1,645 Ac.	9,409 Ac.	0.000 Ac.	0.000 Ac.	9,409 Ac.
SECTION 7 (F97-180)	0	0.000 Ac.	0.000 Ac.	0.000 Ac.	0.000 Ac.	0.178 Ac.	0.178 Ac.	0.000 Ac.	0.000 Ac.	0.178 Ac.
SECTION 8 (F98-25)	0	0.000 Ac.	0.000 Ac.	0.000 Ac.	0.000 Ac.	0.668 Ac.	0.668 Ac.	0.000 Ac.	0.000 Ac.	0.668 Ac.
SECTION 9 (F99-28)	0	0.000 Ac.	0.000 Ac.	0.000 Ac.	0.000 Ac.	0.000 Ac.	0.000 Ac.	0.000 Ac.	0.000 Ac.	0.000 Ac.
SECTION 10 (F00-06)	53	2,765 Ac.	0.000 Ac.	2,341 Ac.	0.000 Ac.	1,257 Ac.	6,363 Ac.	0.000 Ac.	0.000 Ac.	6,363 Ac.
SECTION 11, AREA 1 (F01-91)	0	0.000 Ac.	0.000 Ac.	0.000 Ac.	0.000 Ac.	2,083 Ac.	2,083 Ac.	0.000 Ac.	0.000 Ac.	2,083 Ac.
SECTION 11, AREA 2 (F01-148)	0	0.000 Ac.	0.000 Ac.	8,148 Ac.	4,058 Ac.	0.419 Ac.	12,625 Ac.	0.000 Ac.	0.000 Ac.	12,625 Ac.
SECTION 11, AREA 4 (F01-93)	0	0.000 Ac.	0.000 Ac.	0.000 Ac.	0.000 Ac.	0.000 Ac.	0.000 Ac.	0.000 Ac.	0.000 Ac.	0.000 Ac.
SECTION 12 (F01-31)	120	7,381 Ac.	1,958 Ac.	9,665 Ac.	4,261 Ac.	3,741 Ac.	27,006 Ac.	0.000 Ac.	0.000 Ac.	27,006 Ac.
RESUBDIVISION SECT 4, AREA 1 (F99-79)	0	0.000 Ac.	0.000 Ac.	0.000 Ac.	0.000 Ac.	0.000 Ac.	0.000 Ac.	0.000 Ac.	0.000 Ac.	0.000 Ac.
REVISION SECTION 5 (F99-202)	0	0.000 Ac.	0.000 Ac.	0.000 Ac.	0.000 Ac.	0.000 Ac.	0.000 Ac.	0.000 Ac.	0.000 Ac.	0.000 Ac.
RESUBDIVISION SECTION 6 (F99-174)	5	0.215 Ac.	-0.215 Ac.	0.000 Ac.	0.000 Ac.	0.000 Ac.	0.000 Ac.	0.000 Ac.	0.000 Ac.	0.000 Ac.
SECTION 10 (F00-15) REVISION	0	0.000 Ac.	0.000 Ac.	0.009 Ac.	0.000 Ac.	-0.009 Ac.	0.000 Ac.	0.000 Ac.	0.000 Ac.	0.000 Ac.
TOTALS	378	21,835 Ac.	1,958 Ac.	40,718 Ac.	8,319 Ac.	16,728 Ac.	89,558 Ac.	0.212 Ac.	0.000 Ac.	89,346 Ac.

NET AREA OF R-SA-B ZONED PROPERTY = 89,346 Acres
 ALLOWABLE DWELLING UNITS FOR R-SA-B ZONED PROPERTY = 715
 (89,346 Ac. x 8 UNITS/NET ACRE) = 714.8 DWELLING UNITS
 PROPOSED DWELLING UNITS FOR R-SA-B ZONED PROPERTY = 378

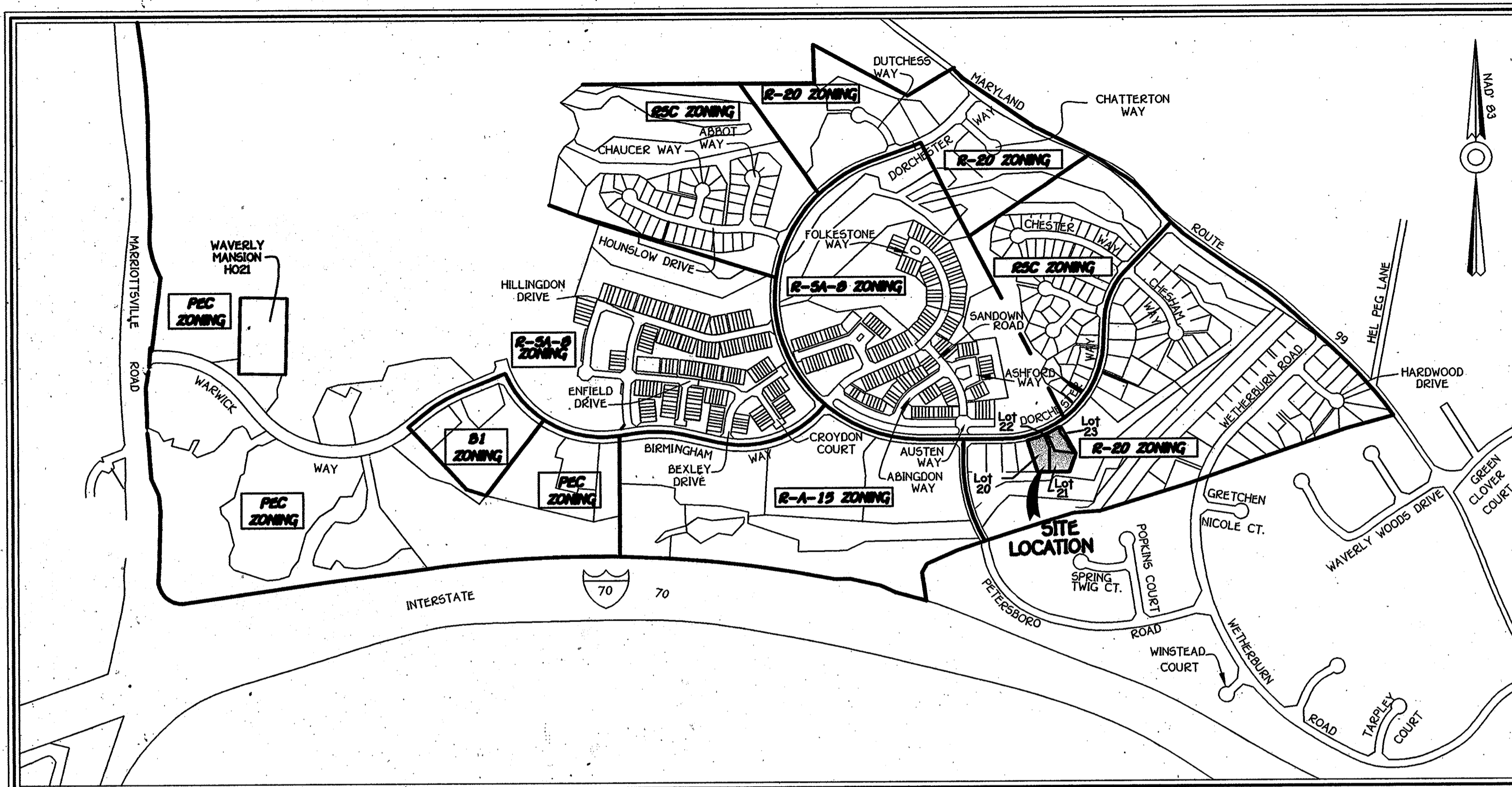
SEE SHEET 5 FOR ZONING MAP

APPROVED: For Public Water And Public Sewerage Systems In Conformance With The Master Plan Of Water And Sewerage For Howard County.

Penny Benzelman M.D. 9/29/03
 Howard County Health Officer Date

APPROVED: Howard County Department Of Planning And Zoning.

Chris Damm 9/29/03
 Chief, Development



ZONING CLASSIFICATIONS

SCALE: 1" = 600'

FISHER, COLLINS & CARTER, INC.
 CIVIL ENGINEERING CONSULTANTS & LAND SURVEYORS
 CENTENNIAL SQUARE OFFICE PARK - 10272 BALTIMORE NATIONAL PKE
 ELLICOTT CITY, MARYLAND 21042
 (410) 461-2955

OWNER AND DEVELOPER
 WAVERLY WOODS DEVELOPMENT CORPORATION
 c/o LAND DESIGN AND DEVELOPMENT, INC.
 8000 MAIN STREET
 ELLICOTT CITY, MARYLAND 21043

SEE SHEETS 2 & 3 FOR OPEN SPACE TABULATION
 SEE SHEET 4 FOR DENSITY TABULATIONS

APPROVED: For Public Water And Public Sewerage Systems In Conformance With The Master Plan Of Water And Sewerage For Howard County.

Penny Borenstein M.D. 9/29/03
 Howard County Health Officer *ML* Date

APPROVED: Howard County Department Of Planning And Zoning.

Chris Danner 9/23/03
 Chief, Development Engineering Division Date

Janice A. Taylor 9/10/03
 Director Date

Waverly Woods Development Corporation By Bruce Taylor, Secretary And Kennard Warfield, Jr., Vice President, Owners Of The Property Shown And Described Hereon, Hereby Adopt This Plan Of Subdivision, And In Consideration Of The Approval Of This Final Plat By The Department Of Planning And Zoning, Establish The Minimum Building Restriction Lines And Grant Unto Howard County, Maryland, Its Successors And Assigns: (1) The Right To Lay, Construct And Maintain Sewers, Drains, Water Pipes And Other Municipal Utilities And Services In And Under All Roads And Street Rights-Of-Way And The Specific Easement Areas Shown Hereon; (2) The Right To Require Dedication For Public Use The Beds Of The Streets And/Or Roads And Floodplains And Open Space Where Applicable And For Good And Other Valuable Consideration, Hereby Grant The Right And Option To Howard County To Acquire The Fee Simple Title To The Beds Of The Streets And/Or Roads And Floodplains, Storm Drainage Facilities And Open Space Where Applicable; (3) The Right To Require Dedication Of Waterways And Drainage Easements For The Specific Purpose Of Their Construction, Repair And Maintenance; And (4) That No Building Or Similar Structure Of Any Kind Shall Be Erected On Or Over The Said Easements And Rights-Of-Way. Witness Our Hands This 31st DAY OF Sept, 2003.

Kennard Warfield, Jr.
 BY: Kennard Warfield, Jr., Vice-President
 Waverly Woods Development Corporation

Bruce Taylor
 BY: Bruce Taylor, Secretary
 Waverly Woods Development Corporation

Robert Webster
 Witness

Robert Webster
 Witness

SURVEYOR'S CERTIFICATE

I Herby Certify That The Final Plat Shown Hereon Is Correct; That It Is A Subdivision Of Part Of The Lands Conveyed By G.T.W. Joint Venture, A Maryland General Partnership To Waverly Woods Development Corporation, A Maryland Corporation By Deed Dated November 1, 1996 And Recorded In The Land Records Of Howard County, Maryland In Liber No. 3991 At Folio 171, And Also Being Parcel 'C' As Shown On Plat Entitled "GTW'S Waverly Woods, Section 4, Area 1, Lots 1 Thru 19, Parcels A Thru E" Recorded As Plat No. 12240 And That All Monuments Are In Place Or Will Be In Place Prior To Acceptance Of The Streets In The Subdivision By Howard County, Maryland As Shown, In Accordance With The Annotated Code Of Maryland, As Amended, And Monumentation In Accordance With The Howard County Subdivision Regulations.

Terrell A. Fisher
 Terrell A. Fisher, Professional Land Surveyor No. 10692
 Date: 9/3/03

RECORDED AS PLAT No. 10220 ON 10/01/03
 AMONG THE LAND RECORDS OF HOWARD COUNTY, MARYLAND.

GTW'S WAVERLY WOODS
 Section 4, Area 1
 Lots 20 Thru 22 And Open Space Lot 23
 (A Resubdivision Of Parcel 'C' - GTW'S Waverly Woods, Section 4, Area 1 - Plat No. 12240)

Zoning: R-20
 Tax Map No: 16 Part Of Parcel: 417 Grid: 6
 Third Election District Howard County, Maryland



Scale: 1" = 50'
 Date: September 3, 2003
 Sheet 5 Of 5

F-04-06