

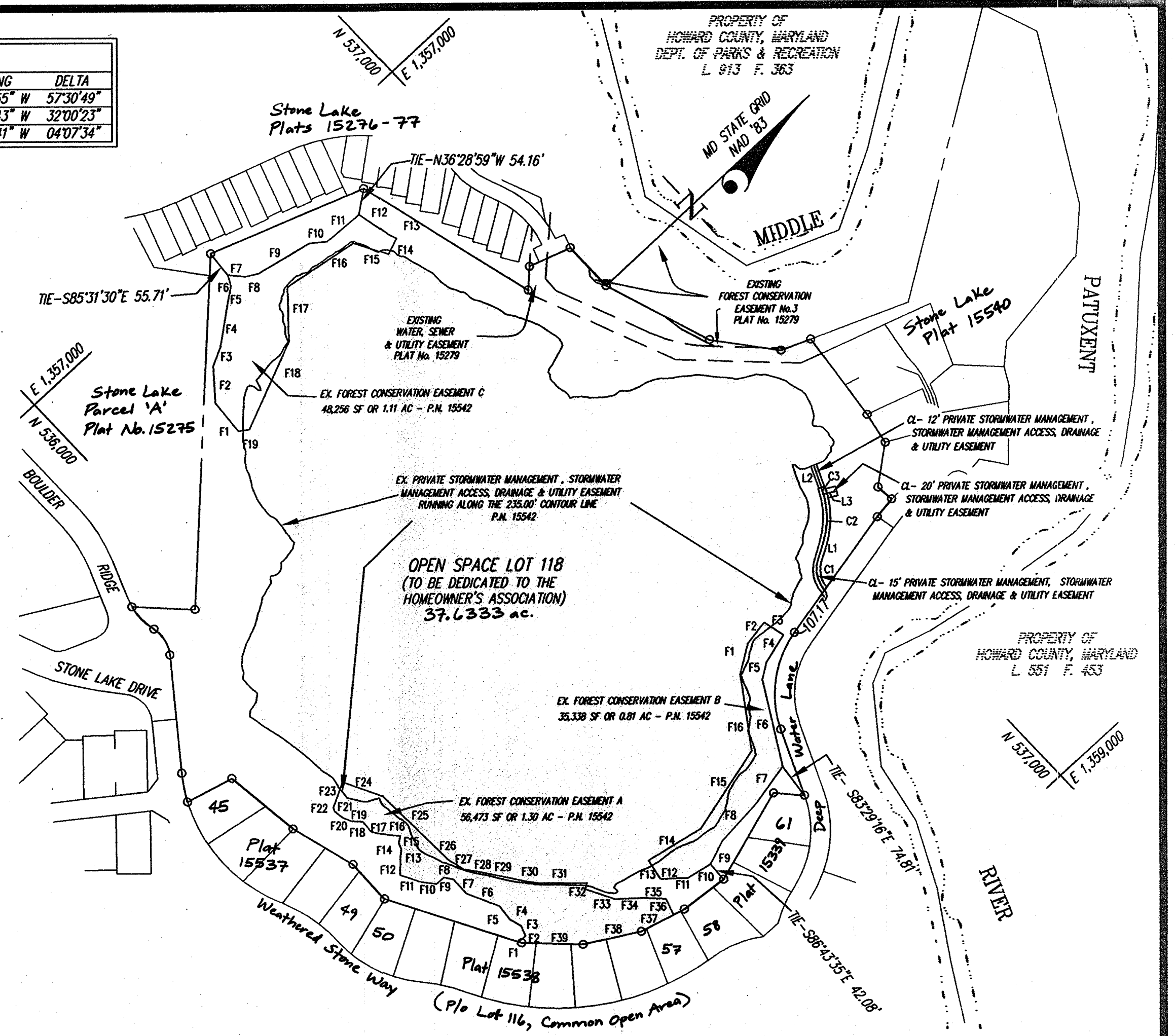
FOREST CONSERVATION EASEMENT A LINE TABLE											
LINE	BEARING	DISTANCE	LINE	BEARING	DISTANCE	LINE	BEARING	DISTANCE	LINE	BEARING	DISTANCE
F1	S 81°09'20" W	7.23	F16	S 49°45'51" W	26.40	F31	N 43°31'30" E	96.20			
F2	N 04°12'21" E	18.98	F17	S 59°40'27" W	33.32	F32	S 37°20'11" E	12.38			
F3	N 70°00'39" W	21.95	F18	N 86°07'03" W	27.69	F33	N 62°18'15" E	63.39			
F4	S 73°04'23" W	25.86	F19	S 45°18'16" W	24.10	F34	N 41°16'52" E	60.16			
F5	S 84°17'37" W	35.65	F20	S 65°33'47" W	18.92	F35	N 45°18'30" E	44.55			
F6	S 64°21'40" W	72.33	F21	S 81°25'13" W	20.72	F36	S 71°41'54" E	37.02			
F7	N 89°06'07" W	40.39	F22	N 67°42'43" W	8.53	F37	S 15°51'58" W	74.16			
F8	S 54°02'29" W	20.05	F23	N 26°50'13" W	96.82	F38	S 30°33'59" W	121.94			
F9	S 02°28'45" W	20.37	F24	N 63°09'45" E	85.33	F39	S 45°00'00" W	125.87			
F10	S 51°20'54" W	33.34	F25	N 87°54'08" E	132.49						
F11	S 62°01'02" W	43.02	F26	N 88°10'14" E	58.42						
F12	N 46°47'01" W	39.08	F27	N 75°11'02" E	35.18						
F13	N 36°52'26" W	14.14	F28	N 54°14'20" E	44.06						
F14	N 69°51'25" W	14.96	F29	N 54°38'19" E	86.61						
F15	N 32°35'47" W	14.63	F30	N 51°18'20" E	28.99						

CURVE TABULATION						
CURVE	RADIUS	LENGTH	TANGENT	CHORD	BEARING	DELTA
C1	67.50'	67.76'	37.04'	64.95'	N 58°50'55" W	57°30'49"
C2	188.00'	105.02'	53.92'	103.66'	N 46°05'43" W	32°00'23"
C3	188.00'	13.54'	6.77'	13.54'	N 64°09'41" W	04°07'34"

LINE TABULATION		
LINE	BEARING	DIST.
L1	N 30°05'31" W	35.55'
L2	N 66°13'28" W	49.54'
L3	N 30°00'00" E	27.73'

FOREST CONSERVATION EASEMENT B LINE TABLE											
LINE	BEARING	DISTANCE	LINE	BEARING	DISTANCE	LINE	BEARING	DISTANCE	LINE	BEARING	DISTANCE
F1	N 33°05'13" W	64.47	F7	S 11°46'25" E	94.68	F13	N 78°28'44" E	45.15			
F2	N 09°19'40" W	55.45	F8	S 04°58'51" E	103.49	F14	N 11°31'17" E	125.36			
F3	N 76°09'12" E	47.43	F9	S 19°58'14" E	53.18	F15	N 14°01'48" W	191.52			
F4	S 14°59'34" E	66.79	F10	S 11°07'04" W	55.73	F16	N 55°24'07" W	161.48			
F5	S 34°10'51" E	36.36	F11	S 43°25'59" W	23.14						
F6	S 59°47'48" E	185.51	F12	S 41°04'49" E	32.21						

FOREST CONSERVATION EASEMENT C LINE TABLE											
LINE	BEARING	DISTANCE	LINE	BEARING	DISTANCE	LINE	BEARING	DISTANCE	LINE	BEARING	DISTANCE
F1	N 85°48'11" W	75.15	F8	N 29°46'35" E	28.62	F15	S 61°32'13" W	75.45			
F2	N 50°18'19" W	76.60	F9	N 12°20'45" E	119.96	F16	S 09°21'47" W	162.21			
F3	N 26°21'18" W	41.59	F10	N 37°02'03" E	36.09	F17	S 48°19'55" E	113.34			
F4	N 37°20'17" W	93.74	F11	N 03°21'49" E	84.39	F18	S 23°10'36" E	198.83			
F5	N 36°16'19" W	35.07	F12	N 77°26'13" E	76.10	F19	S 34°41'02" W	23.19			
F6	N 63°14'30" W	24.25	F13	N 69°50'06" E	15.28						
F7	N 48°19'54" E	36.43	F14	S 20°09'53" E	35.49						



THE REQUIREMENTS OF SECTION 3-108, THE REAL PROPERTY ARTICLE, ANNOTATED CODE OF MARYLAND, 1988 REPLACEMENT VOLUME, (AS SUPPLEMENTED) AS FAR AS THEY RELATE TO THE MAKING OF THIS PLAT AND THE SETTING OF MARKERS, HAVE BEEN COMPLIED WITH.

David S. Weber
 DAVID S. WEBER
 PROFESSIONAL LAND SURVEYOR
 MD. REG. NO. 10852
 DEC. 4, 2002
 DATE

STONE LAKE COMMUNITY ASSOCIATION, INC.
Joseph H. Necker, Jr.
 JOSEPH H. NECKER, JR., VICE-PRESIDENT
 11/26/02
 DATE

THE PURPOSE OF THIS PLAT OF CORRECTION IS TO CHANGE THE WIDTH AND ALIGNMENT OF THE EXISTING 24" WIDE AND 15" WIDE PRIVATE STORMWATER MANAGEMENT, STORMWATER MANAGEMENT ACCESS, DRAINAGE & UTILITY EASEMENTS ON OPEN SPACE LOT 118, WHICH WERE CREATED ON PLAT NO. 15542; FOR SUBDIVISION INFORMATION SEE PLAT NO. 15541.

APPROVED: FOR PUBLIC WATER & PUBLIC SEWERAGE SYSTEMS IN CONFORMANCE WITH THE MASTER PLAN OF WATER & SEWERAGE FOR HOWARD COUNTY, MD.

Perry Covatta
 COUNTY HEALTH OFFICER
 1-13-03
 DATE

APPROVED: HOWARD COUNTY DEPARTMENT OF PLANNING & ZONING

David Dammann
 CHIEF, DEVELOPMENT ENGINEERING DIVISION
 1/9/03
 DATE

Joseph H. Necker, Jr.
 DIRECTOR
 11/19/02
 DATE

OWNER'S DEDICATION
 STONE LAKE COMMUNITY ASSOCIATION, INC., A MARYLAND CORPORATION, BY JOSEPH H. NECKER, JR., VICE-PRESIDENT AND JAMES D. LANO, ASSISTANT SECRETARY, OWNER OF THE PROPERTY SHOWN AND DESCRIBED HEREON, HEREBY ADOPTS THIS PLAN OF SUBDIVISION, AND IN CONSIDERATION OF THE APPROVAL OF THIS FINAL PLAT BY THE DEPARTMENT OF PLANNING AND ZONING, ESTABLISHES THE MINIMUM BUILDING RESTRICTION LINES AND GRANTS UNTO HOWARD COUNTY, MARYLAND, ITS SUCCESSORS AND ASSIGNS:
 (1) THE RIGHT TO LAY, CONSTRUCT AND MAINTAIN SEWERS, DRAINS, WATER PIPES AND OTHER MUNICIPAL UTILITIES AND SERVICES, IN AND UNDER ALL ROADS AND STREET RIGHTS-OF-WAY AND THE SPECIFIC EASEMENT AREAS SHOWN HEREON;
 (2) THE RIGHT TO REQUIRE DEDICATION FOR PUBLIC USE, THE BEDS OF THE STREETS AND/OR ROADS, FLOODPLAINS AND OPEN SPACE WHERE APPLICABLE AND FOR GOOD AND OTHER VALUABLE CONSIDERATION, HEREBY GRANTS THE RIGHT AND OPTION TO HOWARD COUNTY TO ACQUIRE THE FEE SIMPLE TITLE TO THE BEDS OF THE STREETS AND/OR ROADS, FLOODPLAINS, STORM DRAINAGE FACILITIES AND OPEN SPACE WHERE APPLICABLE;
 (3) THE RIGHT TO REQUIRE DEDICATION OF WATERWAYS AND DRAINAGE EASEMENTS FOR THE SPECIFIC PURPOSE OF THEIR CONSTRUCTION, REPAIR AND MAINTENANCE; AND
 (4) THAT NO BUILDING OR SIMILAR STRUCTURE OF ANY KIND SHALL BE ERRECTED ON OR OVER THE SAID EASEMENTS AND RIGHTS-OF-WAY.
 WITNESS OUR HANDS THIS DAY OF
 STONE LAKE COMMUNITY ASSOCIATION, INC.
 BY: *Joseph H. Necker, Jr.*
 JOSEPH H. NECKER, JR., VICE-PRESIDENT
 ATTEST: *James D. Lano*
 JAMES D. LANO, ASSISTANT SECRETARY

SURVEYOR'S CERTIFICATE
 I HEREBY CERTIFY TO THE BEST OF MY KNOWLEDGE, INFORMATION AND BELIEF, THAT THE PLAT OF CORRECTION SHOWN HEREON IS CORRECT; THAT IT IS A SUBDIVISION OF PART OF THE LAND CONVEYED BY STONE LAKE HEREON IS CORRECT; THAT IT IS A SUBDIVISION OF PART OF THE LAND CONVEYED BY STONE LAKE CORPORATION TO STONE LAKE COMMUNITY ASSOCIATION, INC., BY DEED DATED JULY 10, 2002 AND RECORDED AMONG THE LAND RECORDS OF HOWARD COUNTY, MARYLAND IN LIBER 6346 AT FOLIO 462, AND BEING ALL OF OPEN SPACE LOT 118 AS SHOWN ON A PLAT OF SUBDIVISION ENTITLED, "STONE LAKE, LOTS 45 THRU 118, SHEET 8 OF 8" AND RECORDED AMONG SAID LAND RECORDS AS PLAT NO. 15542, AND THAT ALL MONUMENTS ARE IN PLACE OR WILL BE IN PLACE PRIOR TO ACCEPTANCE OF THE STREETS IN THE SUBDIVISION BY HOWARD COUNTY IN ACCORDANCE WITH THE ANNOTATED CODE OF MARYLAND AS AMENDED.
David S. Weber
 DAVID S. WEBER
 PROFESSIONAL LAND SURVEYOR
 MARYLAND REGISTRATION NO. 10852
 DEC. 4, 2002
 DATE



RECORDED AS PLAT NUMBER 15770 ON
 Jan. 14, 2003, AMONG THE LAND RECORDS OF
 HOWARD COUNTY, MARYLAND

PLAT OF CORRECTION
STONE LAKE
 Open Space Lot 118
 (Plat Nos. 15542, F-01-204)
 SHEET 1 TAX MAP 47, GRID 7, P/O PARCEL 837
 6th ELECTION DISTRICT HOWARD COUNTY, MARYLAND
 SCALE: 1"=200' NOVEMBER, 2002
GLW GUTSCHICK LITTLE & WEBER, P.A.
 CIVIL ENGINEERS, LAND SURVEYORS, LAND PLANNERS, LANDSCAPE ARCHITECTS
 3909 NATIONAL DRIVE - SUITE 250 - BURTONSVILLE OFFICE PARK
 BURTONSVILLE, MARYLAND 20866
 TEL: 301-421-4024 FAX: 301-421-4185
 DRAWN BY: *DWC* CHECK BY: *HW*