

The undersigned, owner of the property shown on this plat, grants unto Howard County, Maryland, its successors and assigns, the right to lay, construct and maintain sewers, drains, water pipes, and other municipal utilities and services, in and through the specific easement area shown hereon, to the end that the specific lots shall be thereby burdened with the right of way shown hereon, and it is agreed that no buildings or similar structures of any kind shall be erected in, on or over the said right of way by the grantor, its successors and assigns, or Howard County, Maryland.

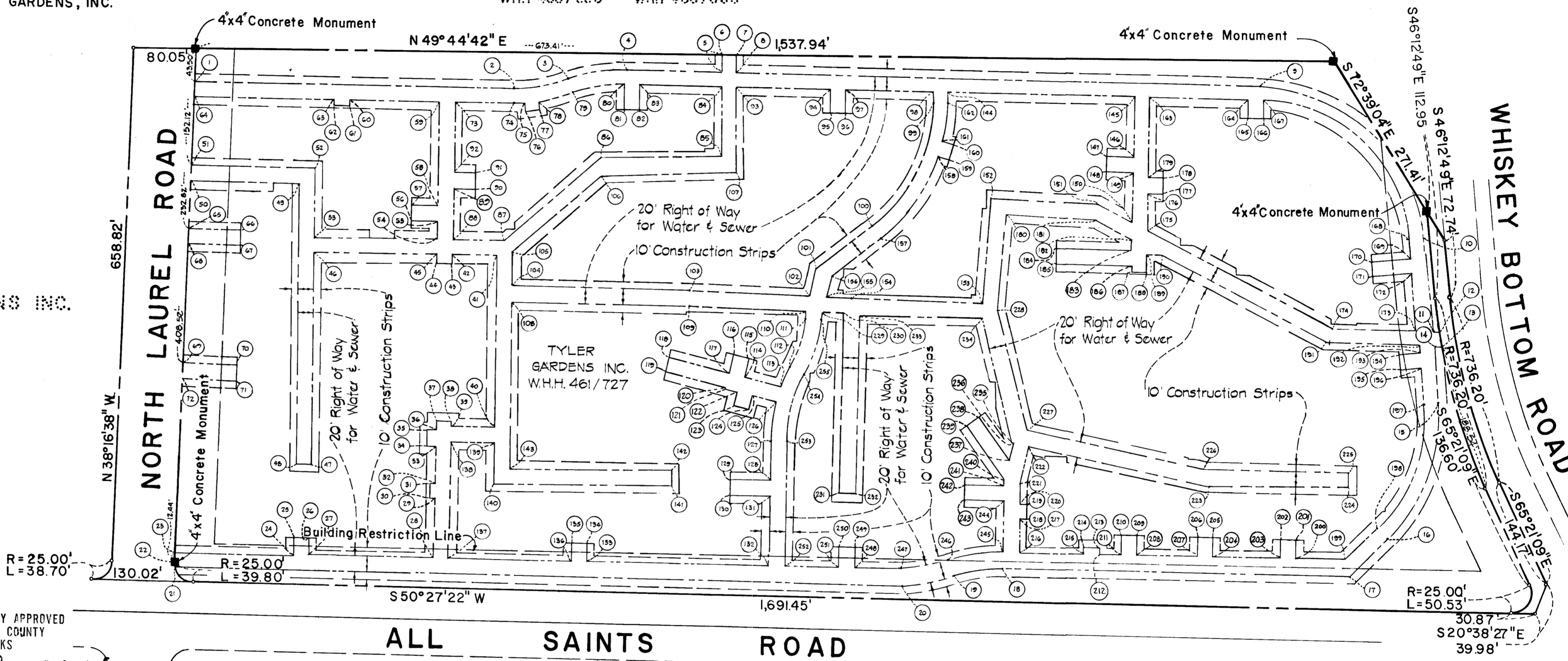
By: *Alan Astor*
 TYLER GARDENS, INC.

GEORGE REVITZ ET AL.
 WHH 458/550 WHH 460/566

E842.500 N469.500

N471.000 E844.000

TYLER GARDENS INC.
 WHH 461/727



EASEMENTS & RIGHTS OF WAY APPROVED & ACCEPTED BY THE HOWARD COUNTY DEPARTMENT OF PUBLIC WORKS
 BY: *W O Fulbert C-2627-D-605*
 8-26-74

PLAT FOR GRANT OF EASEMENTS FOR WATER AND SEWER TO HOWARD COUNTY, MARYLAND
 TYLER GARDENS PHASE 1
 6th ELECTION DISTRICT, HOWARD COUNTY, MARYLAND
 SCALE: 1" = 100' JUNE 21, 1974

PURDUM & JESCHKE
 CONSULTING ENGINEERS
 & LAND SURVEYORS
 1023 NORTH CALVERT STREET
 BALTIMORE, MARYLAND 21202

PROFESSIONAL ENGINEER & LAND SURVEYOR
 CURT A.H. JESCHKE REG. NO. 2351
 BY: *Curt A.H. Jeschke*

SHEET NO. 2 OF 2
 RECORDED IN PLAT BOOK 29 FOLIO 61
 ON September 20, 1974, AMONG THE
 LAND RECORDS OF HOWARD, COUNTY, MARYLAND