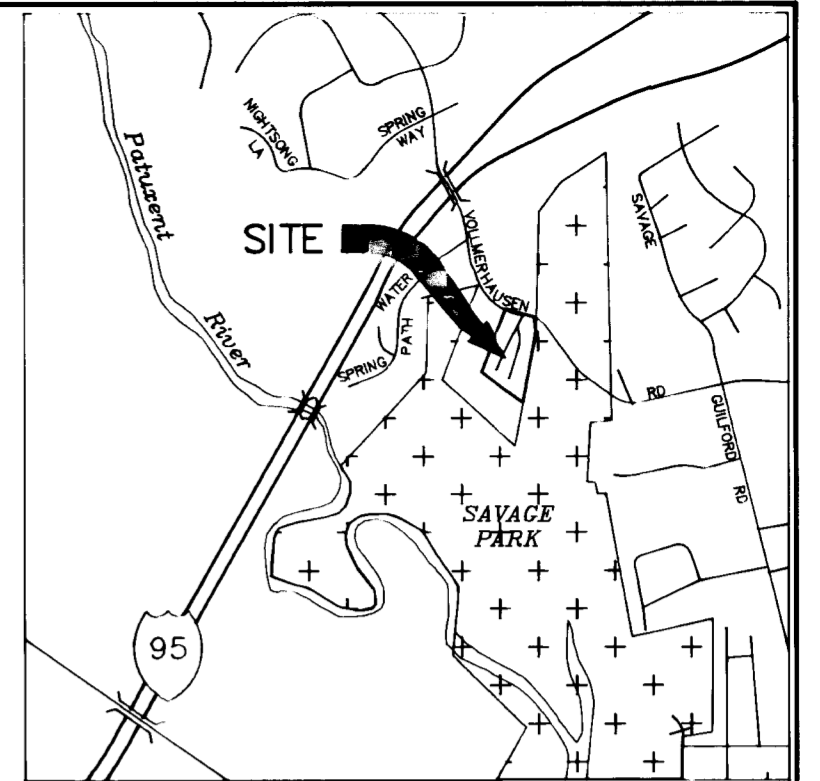


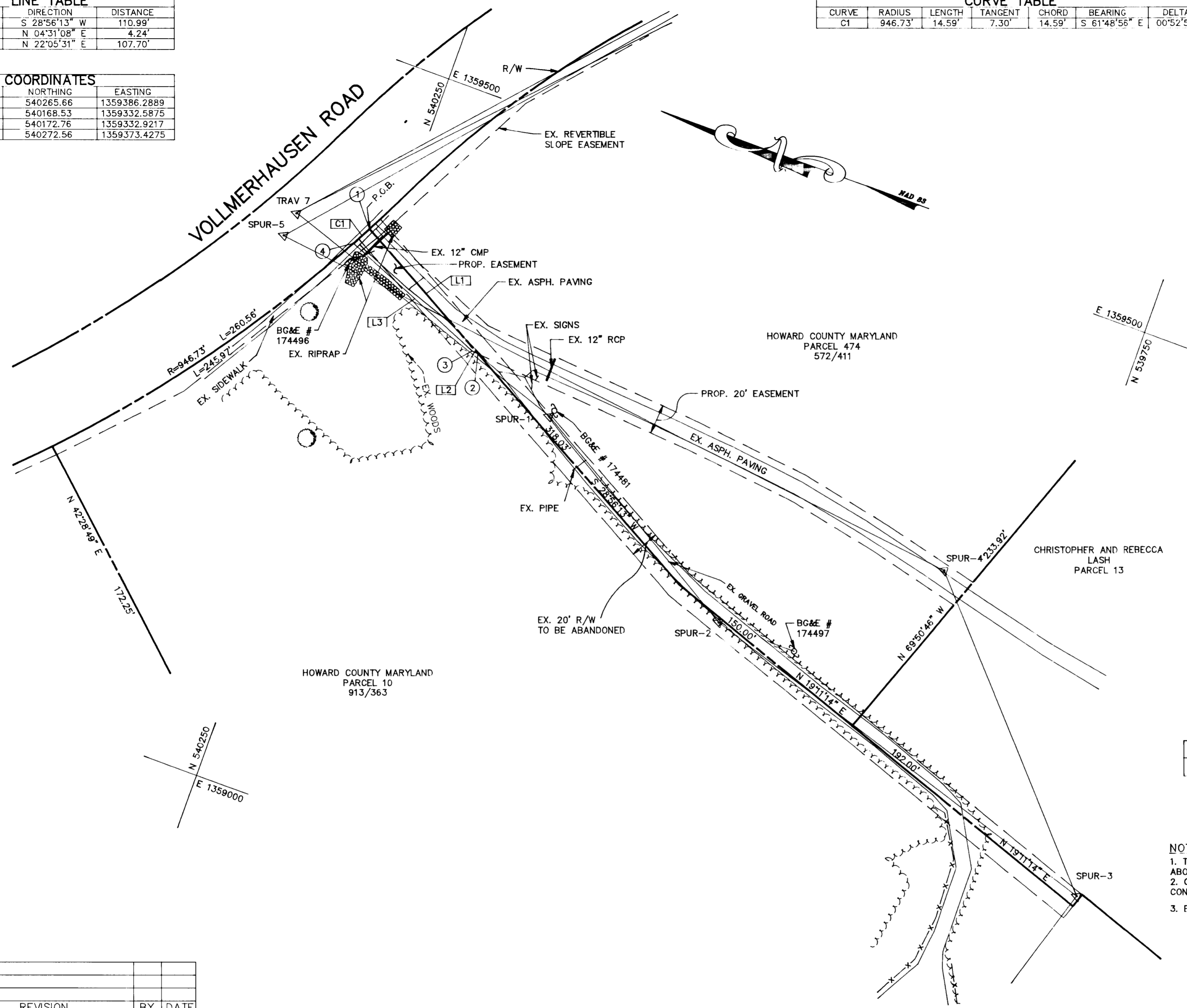
LINE TABLE		
LINE	DIRECTION	DISTANCE
L1	S 28°56'13" W	110.99'
L2	N 04°31'08" E	4.24'
L3	N 22°05'31" E	107.70'

COORDINATES		
NUMBER	NORTHING	EASTING
1	540265.66	1359386.2889
2	540168.53	1359332.5875
3	540172.76	1359332.9217
4	540272.56	1359373.4275

CURVE TABLE						
CURVE	RADIUS	LENGTH	TANGENT	CHORD	BEARING	DELTA
CT	946.73'	14.59'	7.30'	14.59'	S 61°48'56" E	00°52'59"



VICINITY MAP
SCALE: 1"=2000'



AREA TABULATION
AREA OF EASEMENT = 879 SF OR 0.02 AC.

- NOTES
1. THIS BOUNDARY IS BASED ON A FIELD-RUN SURVEY ON OR ABOUT MAY, 1996, BY DFI, INC.
 2. COORDINATES SHOWN HEREON ARE BASED ON HOWARD COUNTY CONTROL STATIONS 47C4 AND 47R1, NAD-83.
 3. EASEMENT AREA AS SHOWN:

NO.	REVISION	BY	DATE

APPROVED: DEPARTMENT OF PUBLIC WORKS

Elizabeth A. Laker 12/10/96
CHIEF: BUREAU OF ENGINEERING, DIV. TRANSPORTATION/WATERWAYS

CHIEF: SURVEY AND DRAFTING DIVISION *na*

CHIEF: REAL ESTATE SERVICES DIVISION

REVISIONS

Mark E. Powell
14 May 96 Field

MARK E. POWELL
PROPERTY LINE SURVEYOR
MARYLAND REG. No. 578

dfi CONSULTING ENGINEERS, SURVEYORS,
AND LAND PLANNERS

504 BALTIMORE/ANNAPOLIS BOULEVARD
SEVERNA PARK, MD 21146 (410)647-2727
FAX (410)647-7127

HOWARD COUNTY DEPARTMENT OF PUBLIC WORKS
GRANT OF EASEMENT PLAT

TAX MAP 47 PARCEL 10 LIBER 913 FOLIO 363
6th ELECTION DISTRICT HOWARD COUNTY, MARYLAND

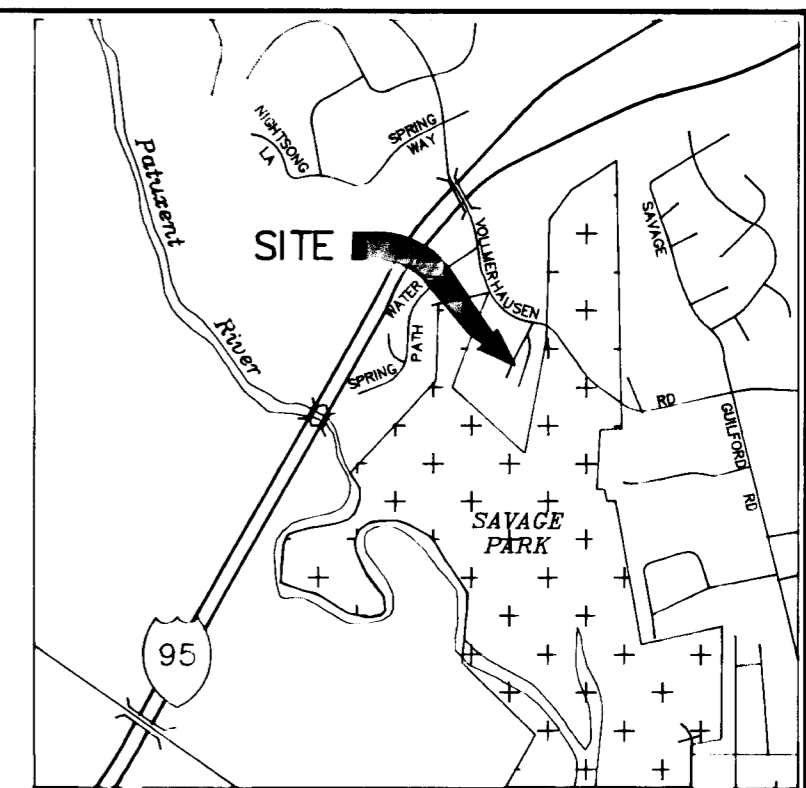
SCALE: 1"=50'
SHEET No. 1 OF 2

DATE: 7-96 PROJECT No.: N-3944 PLAT No. N-3944-1

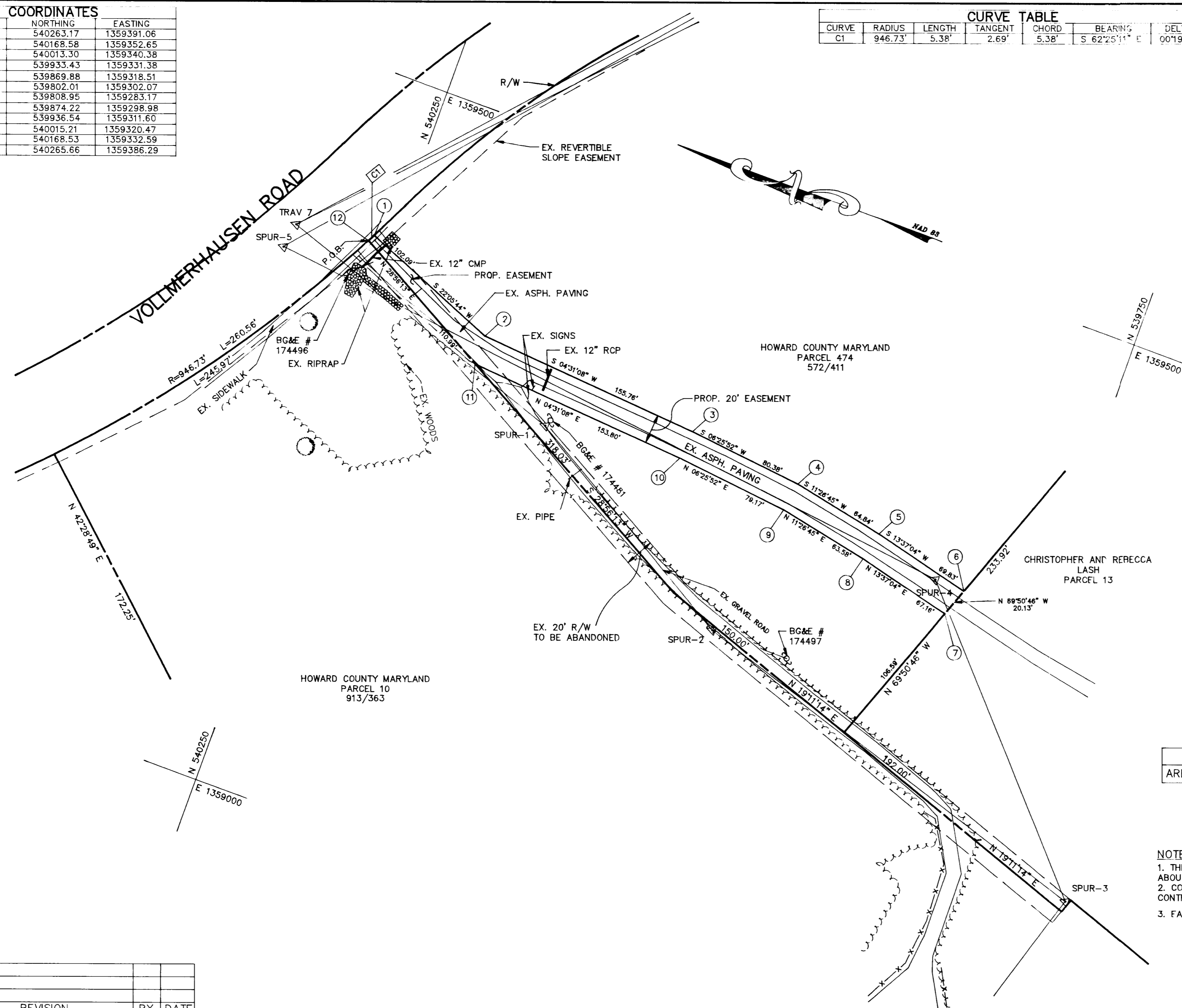
EX. VOLLMERHAUSEN ROAD CORNER 0-28-96

COORDINATES		
NUMBER	NORTHING	EASTING
1	540263.17	1359391.06
2	540168.58	1359352.65
3	540013.30	1359340.38
4	539933.43	1359331.38
5	539869.88	1359318.51
6	539802.01	1359302.07
7	539808.95	1359283.17
8	539874.22	1359298.98
9	539936.54	1359311.60
10	540015.21	1359320.47
11	540168.53	1359332.59
12	540265.66	1359386.29

CURVE TABLE						
CURVE	RADIUS	LENGTH	TANGENT	CHORD	BEARING	DELTA
C1	946.73'	5.38'	2.69'	5.38'	S 62°25'11" E	00°19'32"



VICINITY MAP
SCALE: 1"=200'



AREA TABULATION
AREA OF EASEMENT = 8592 SF OR 0.20 AC.

- NOTES
1. THIS BOUNDARY IS BASED ON A FIELD-RUN SURVEY ON OR ABOUT MAY, 1996, BY DFI, INC.
 2. COORDINATES SHOWN HEREON ARE BASED ON HOWARD COUNTY CONTROL STATIONS 47C4 AND 47R1, NAD-83.
 3. EASEMENT AREA AS SHOWN:

NO.	REVISION	BY	DATE

APPROVED: DEPARTMENT OF PUBLIC WORKS

Elizabeth A. Calice 12/10/96
CHIEF: BUREAU OF ENGINEERING: DIV. TRANSP. & WATERWAYS

CHIEF: SURVEY AND DRAFTING DIVISION *na*

CHIEF: REAL ESTATE SERVICES DIVISION

REVISIONS

Mark E. Powell
14 May 96

MARK E. POWELL
PROPERTY LINE SURVEYOR
MARYLAND REG. No. 578

dfi CONSULTING ENGINEERS, SURVEYORS,
AND LAND PLANNERS

504 BALTIMORE/ANNAPOLIS BOULEVARD
SEVERNA PARK, MD 21146 (410)647-2727
FAX (410)647-7127

HOWARD COUNTY DEPARTMENT OF PUBLIC WORKS
GRANT OF EASEMENT PLAT

TAX MAP 47 PARCEL 474 LIBER 572 FOLIO 411
6th ELECTION DISTRICT HOWARD COUNTY, MARYLAND

SCALE: 1"=50'
SHEET No. 2 OF 2

DATE: 7-96 PROJECT No.: N-3944 PLAT No. N-3944-2

EX. MURRAY, MURPHY, TOZ, COHEN, V. 29-96