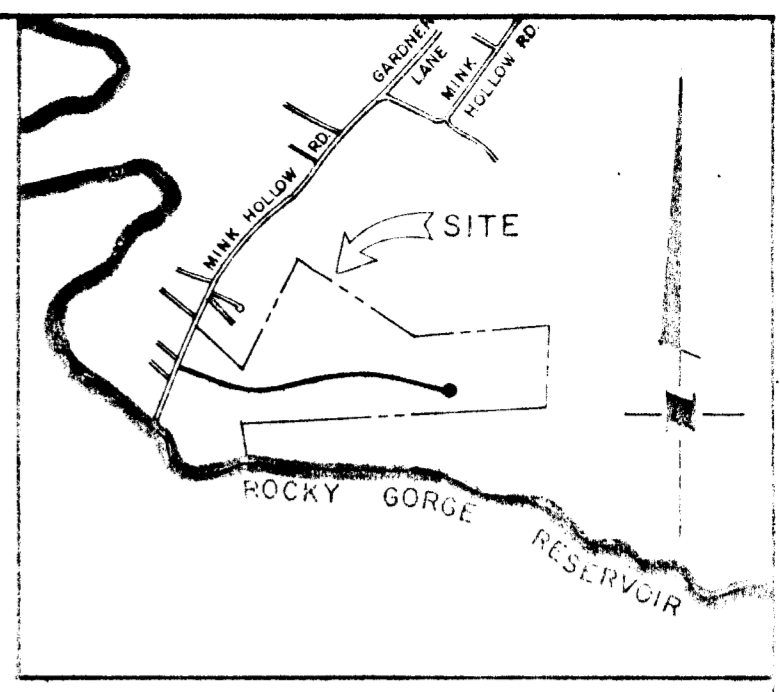


COORDINATES TABLE		
STATION	NORTH	EAST
STA. 0+00	486547.41	800706.86
STA. 0+15.56	486545.79	800722.33
STA. 0+48.92 PC	486542.31	800755.50
STA. 2+46.83 PT	486487.73	800944.67
STA. 5+27.51 PC	486363.72	801196.47
STA. 6+45.26 PT	486342.97	801310.84
STA. 7+45.24 PC	486352.83	801410.33
STA. 8+68.52 PT	486380.95	801529.99
STA. 9+46.28 PC	486408.56	801602.69

CURVE DATA					
NO	DELTA	RADIUS	TAN	ARC	CHORD BEARING & DISTANCE
1	20°-14'-42"	560.12'	100.00'	197.91'	S 73°-54'-12" E 196.89'
2	31°-52'-32"	211.65'	60.44'	117.75'	S 79°-43'-07" E 116.23'
3	15°-08'-16"	466.60'	62.00'	123.28'	N 76°-46'-29" E 122.92'



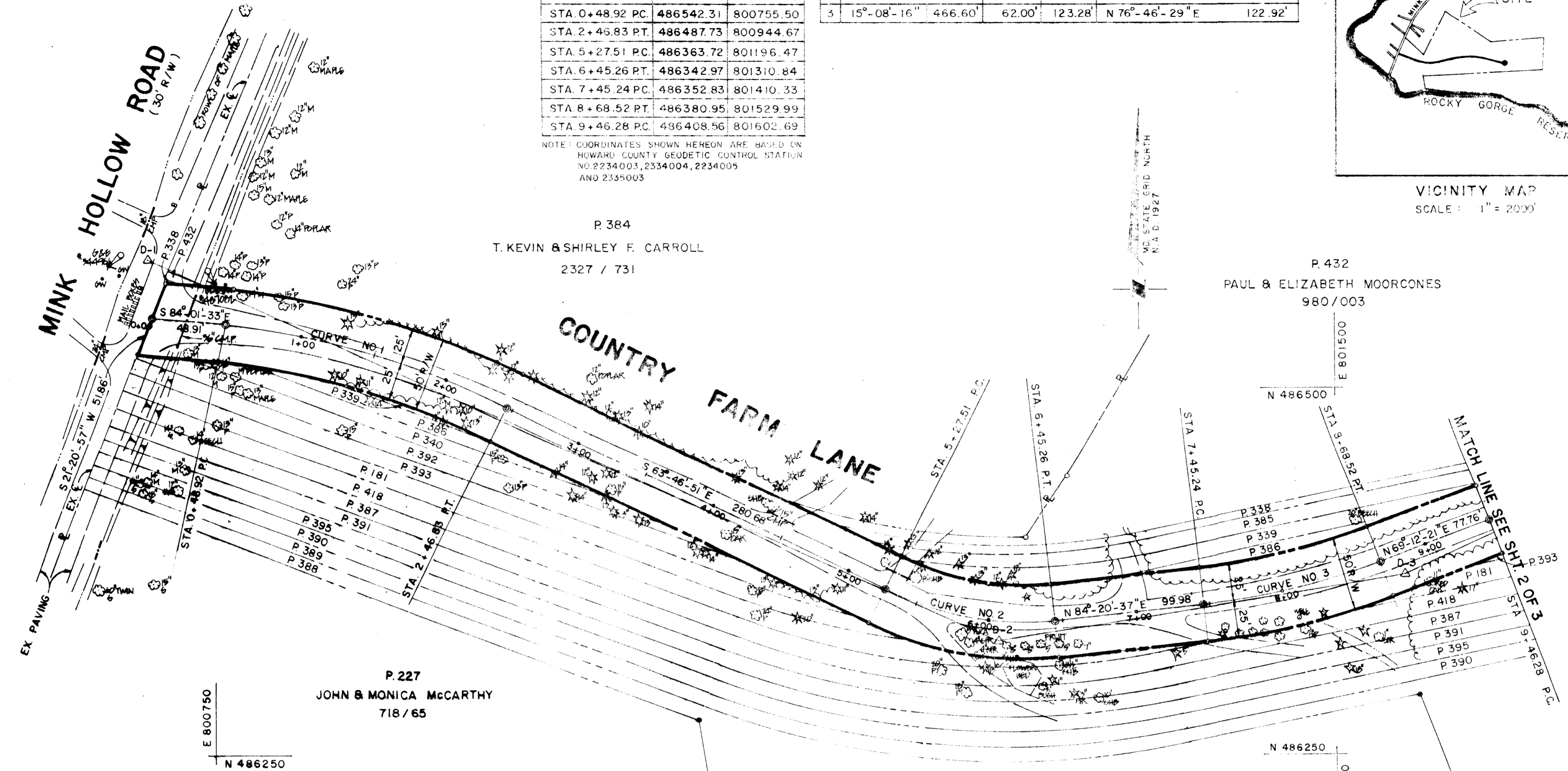
NOTE: COORDINATES SHOWN HEREON ARE BASED ON HOWARD COUNTY GEODETIC CONTROL STATION NO. 2234003, 2334004, 2234005 AND 2335003

P. 384
T. KEVIN & SHIRLEY F. CARROLL
2327 / 731

P. 432
PAUL & ELIZABETH MOORCONES
980 / 003

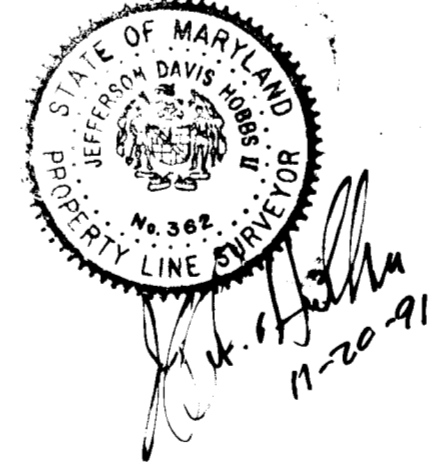
P. 227
JOHN & MONICA MCCARTHY
718 / 65

P. 388
JOHN & MONICA MCCARTHY
718 / 68



AREA TABULATION

GROSS AREA OF DRAINAGE & UTILITY EASEMENT	= 4,140,458 SQ. FT. OR 0.129 AC. OF LAND MORE OR LESS
AREA OF WETLANDS WITHIN DRAINAGE & UTILITY EASEMENT	= 1,434 SQ. FT. OR 0.033 AC. OF LAND MORE OR LESS.
GROSS AREA OF FEE SIMPLE ACQUISITION	= 145,644 SQ. FT. OR 3.3435 AC. OF LAND MORE OR LESS.
GROSS AREA OF REVERTABLE SLOPE EASEMENT	= 14,686.4 SQ. FT. OR 0.337 AC. OF LAND MORE OR LESS
AREA OF WETLANDS WITHIN FEE SIMPLE ACQUISITION	= 1,215 SQ. FT. OR 0.028 AC. OF LAND MORE OR LESS
AREA OF WETLANDS WITHIN REVERTABLE SLOPE EASEMENT	= 2,026 SQ. FT. OR 0.047 AC. OF LAND MORE OR LESS



LEGEND	REVISIONS
<ul style="list-style-type: none"> — PERPETUAL EASEMENT TO DISCHARGE FLOW OF WATER FROM ON/INTO EXISTING WATER WAY OR NATURAL DRAINAGE COURSE. — DIRECTION OF EXISTING DRAINAGE — REVERTABLE SLOPE EASEMENT — WETLANDS WITHIN REVERTABLE SLOPE EASEMENT — WETLANDS WITHIN THIS ACQUISITION 	
COMPUTED BY: A.M.B.	
DRAWN BY: Y.P.	
CHECKED BY: W.H. / J.D.H.	

APPROVED: BUREAU OF ENGINEERING
<i>William E. Riley</i> 11-26-91 CHIEF - BUREAU OF ENGINEERING DATE
<i>John D. Hackett</i> 11-20-91 CHIEF - SURVEY & DRAFTING DIV. DATE
APPROVED: LAND ACQUISITION
<i>Tina D. Hackett</i> 11-21-91 CHIEF - LAND ACQUISITION DATE

HOWARD COUNTY, MARYLAND
DEPARTMENT OF PUBLIC WORKS
BUREAU OF ENGINEERING
SURVEY AND DRAFTING DIVISION

RIGHT OF WAY PROJECT: COUNTRY FARM LANE
PROJECT NO: J-4098-BB
DATE: 9-26-91

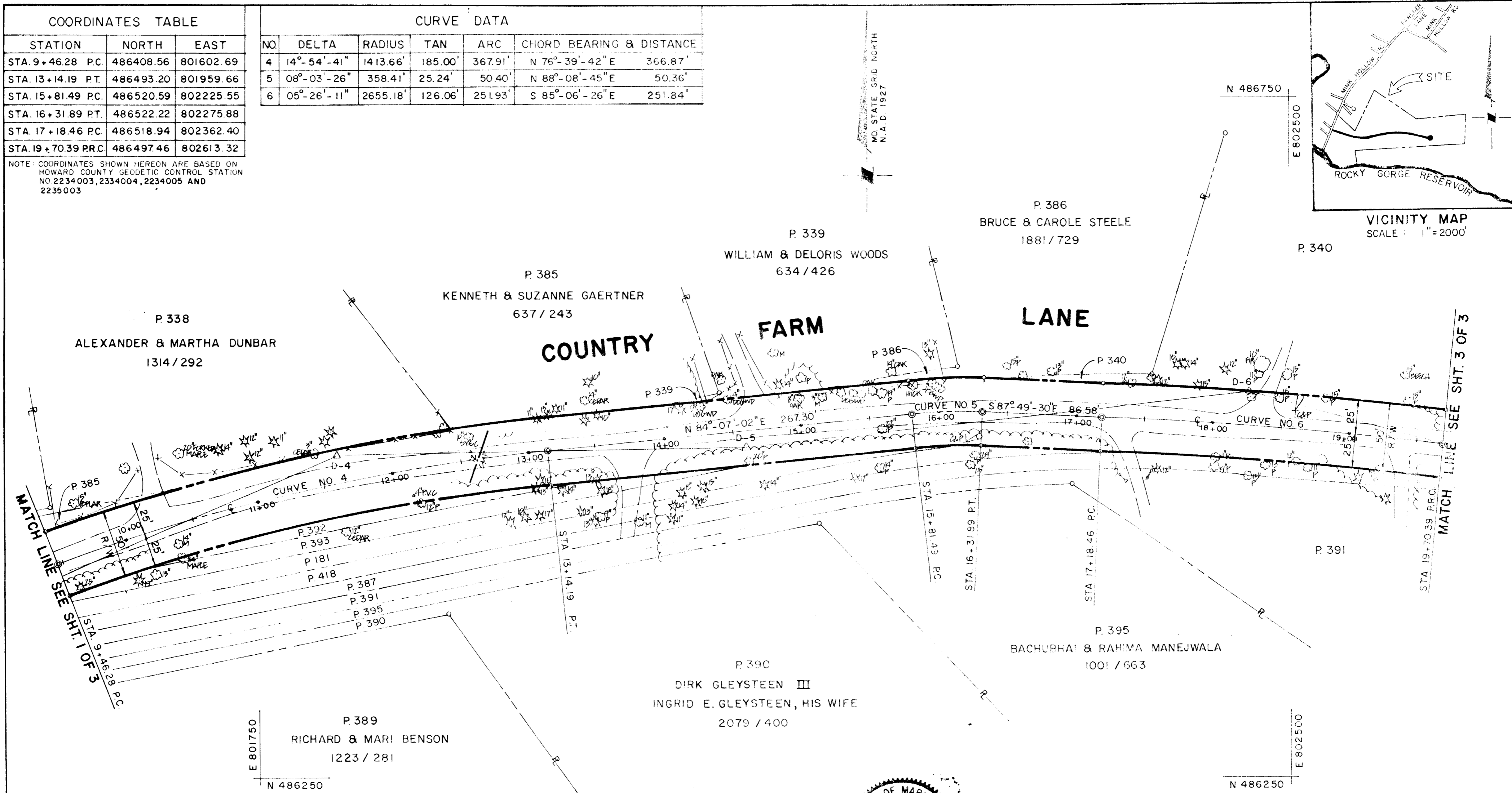
Copyright © 1990
SCALE: 1" = 50'
SHEET 1 OF 3
PLAT NO: J-4098-BB

James P. [Signature] 11/21/91
DIRECTOR - DEPARTMENT OF PUBLIC WORKS

COORDINATES TABLE		
STATION	NORTH	EAST
STA. 9+46.28 P.C.	486408.56	801602.69
STA. 13+14.19 P.T.	486493.20	801959.66
STA. 15+81.49 P.C.	486520.59	802225.55
STA. 16+31.89 P.T.	486522.22	802275.88
STA. 17+18.46 P.C.	486518.94	802362.40
STA. 19+70.39 P.R.C.	486497.46	802613.32

CURVE DATA					
NO.	DELTA	RADIUS	TAN	ARC	CHORD BEARING & DISTANCE
4	14°-54'-41"	1413.66'	185.00'	367.91'	N 76°-39'-42" E 366.87'
5	08°-03'-26"	358.41'	25.24'	50.40'	N 88°-08'-45" E 50.36'
6	05°-26'-11"	2655.18'	126.06'	251.93'	S 85°-06'-26" E 251.84'

NOTE: COORDINATES SHOWN HEREON ARE BASED ON HOWARD COUNTY GEODETIC CONTROL STATION NO 2234003, 2334004, 2234005 AND 2235003



AREA TABULATION

GROSS AREA OF DRAINAGE AND UTILITY EASEMENT	= 4,140,458 SQ. FT. OR 0.129 AC. OF LAND MORE OR LESS
AREA OF WETLANDS WITHIN DRAINAGE AND UTILITY EASEMENT	= 1,434 SQ. FT. OR 0.033 AC. OF LAND MORE OR LESS
GROSS AREA OF FEE SIMPLE ACQUISITION	= 145,644 SQ. FT. OR 3.3435 AC. OF LAND MORE OR LESS
GROSS AREA OF REVERTABLE SLOPE EASEMENT	= 14,686.4 SQ. FT. OR 0.337 AC. OF LAND MORE OR LESS
AREA OF WETLANDS WITHIN FEE SIMPLE ACQUISITION	= 1,215 SQ. FT. OR 0.028 AC. OF LAND MORE OR LESS
AREA OF WETLANDS WITHIN REVERTABLE SLOPE EASEMENT	= 2,026 SQ. FT. OR 0.047 AC. OF LAND MORE OR LESS

LEGEND
PERPETUAL EASEMENT TO DISCHARGE FLOW OF WATER FROM ON/INTO EXISTING WATER WAY OR NATURAL DRAINAGE COURSE.
DIRECTION OF EXISTING DRAINAGE
REVERTABLE SLOPE EASEMENT
WETLANDS WITHIN REVERTABLE SLOPE EASEMENT
WETLANDS WITHIN THIS ACQUISITION
COMPUTED BY: A.M.B.
DRAWN BY: Y.P.
CHECKED BY: W.H. / J.D.H.

REVISIONS

APPROVED: BUREAU OF ENGINEERING	
<i>William Z. Riden</i>	11-21-91
CHIEF - BUREAU OF ENGINEERING	DATE
<i>J.P. Hallett</i>	11-20-91
CHIEF SURVEY & DRAFTING DIV.	DATE
APPROVED: LAND ACQUISITION	
<i>Lina D. Hackett</i>	11-21-91
CHIEF - LAND ACQUISITION	DATE

HOWARD COUNTY, MARYLAND
DEPARTMENT OF PUBLIC WORKS
BUREAU OF ENGINEERING
SURVEY AND DRAFTING DIVISION

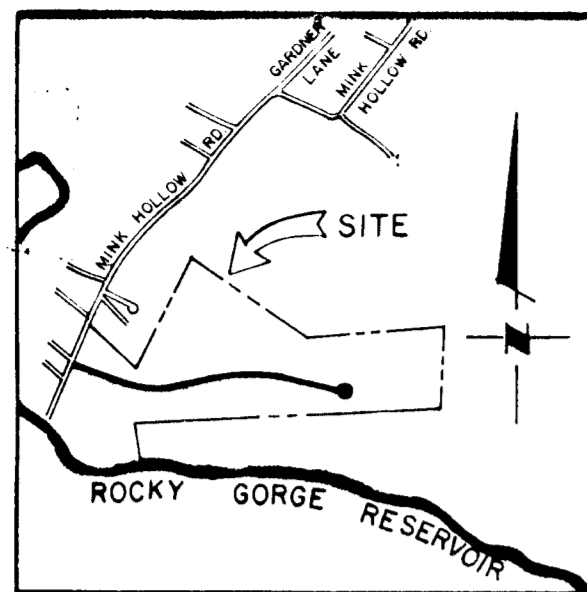
RIGHT OF WAY PROJECT: COUNTRY FARM LANE
PROJECT NO: J-4098-BB
DATE: 9-26-91

SCALE: 1" = 50'
SHEET 2 OF 3
PLAT NO: J-4098-BB

Copyright © 1990

James P. ... 11/21/91
DIRECTOR - DEPARTMENT OF PUBLIC WORKS



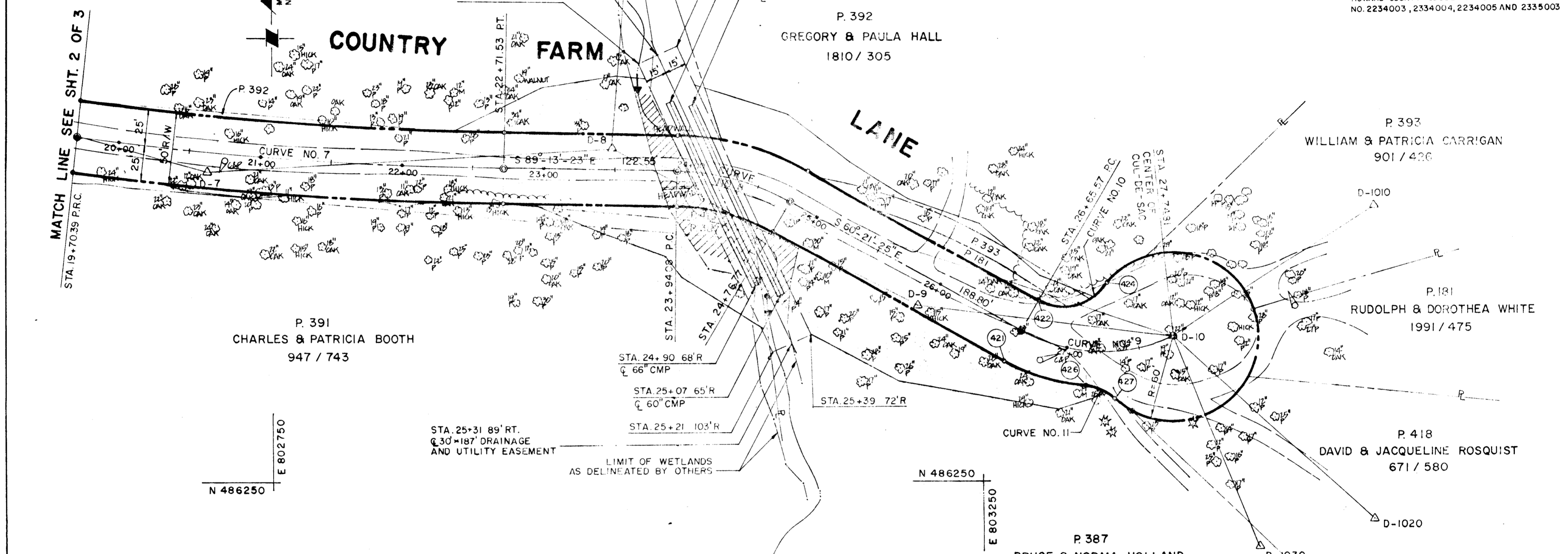


VICINITY MAP
SCALE: 1" = 2000'

CURVE DATA						
NO.	DELTA	RADIUS	TAN	ARC	CHORD BEARING & DISTANCE	
7	06°-50'-02"	2524.80'	150.75'	301.14'	S 85°-48'-22" E 300.96'	
8	28°-51'-58"	164.12'	42.24'	82.69'	S 74°-47'-22" E 81.81'	
9	53°-40'-12"	116.61'	58.99'	109.23'	S 87°-11'-31" E 105.28'	
10	87°-39'-12"	35.00'	33.59'	53.54'	N 75°-48'-59" E 48.47'	
11	37°-30'-36"	35.00'	11.88'	22.91'	S 65°-32'-01" E 22.51'	

COORDINATES TABLE		
STATION	NORTH	EAST
STA. 19+70.39 PRC.	486497.46	802613.32
STA. 22+71.53 PT.	486475.45	802913.48
STA. 23+94.08 PC	486473.78	803036.02
STA. 24+76.77 PT.	486306.95	803424.99
STA. 26+65.57 PC	486358.94	803279.05
STA. 27+74.81	486353.78	803384.21
(421)	486337.21	803266.69
(422)	486380.67	803291.42
(424)	486392.55	803338.41
(426)	486319.38	803322.63
(427)	486310.06	803343.12

NOTE: COORDINATES SHOWN HEREON ARE BASED ON HOWARD COUNTY GEODETIC CONTROL STATION NO. 2234003, 2234004, 2234005 AND 2335003



AREA TABULATION

- GROSS AREA OF DRAINAGE AND UTILITY EASEMENT = 4,140,458 SQ. FT. OR 0.129 AC. OF LAND MORE OR LESS
- AREA OF WETLANDS WITHIN DRAINAGE AND UTILITY EASEMENT = 1,434 SQ. FT. OR 0.033 AC. OF LAND MORE OR LESS
- GROSS AREA OF FEE SIMPLE ACQUISITION = 145,644 SQ. FT. OR 3.3435 AC. OF LAND MORE OR LESS
- GROSS AREA OF REVERTABLE SLOPE EASEMENT = 14,686.4 SQ. FT. OR 0.337 AC. OF LAND MORE OR LESS
- AREA OF WETLANDS WITHIN FEE SIMPLE ACQUISITION = 1,215 SQ. FT. OR 0.028 AC. OF LAND MORE OR LESS
- AREA OF WETLANDS WITHIN REVERTABLE SLOPE EASEMENT = 2,026 SQ. FT. OR 0.047 AC. OF LAND MORE OR LESS



LEGEND	
	PERPETUAL EASEMENT TO DISCHARGE FLOW OF WATER FROM ON/INTO EXISTING WATER WAY OR NATURAL DRAINAGE COURSE.
	DIRECTION OF EXISTING DRAINAGE.
	REVERTABLE SLOPE EASEMENT.
	WETLANDS WITHIN REVERTABLE SLOPE EASEMENT.
	WETLANDS WITHIN THIS ACQUISITION.

REVISIONS	

APPROVED: BUREAU OF ENGINEERING	
<i>McCaum S. Riley</i>	11-21-91
CHIEF - BUREAU OF ENGINEERING	DATE
<i>J.P. Hallett</i>	11-20-91
CHIEF - SURVEY & DRAFTING DIV.	DATE
APPROVED: LAND ACQUISITION	
<i>Lina D. Hackett</i>	11-21-91
CHIEF - LAND ACQUISITION	DATE

HOWARD COUNTY, MARYLAND
DEPARTMENT OF PUBLIC WORKS
BUREAU OF ENGINEERING
SURVEY AND DRAFTING DIVISION

RIGHT OF WAY PROJECT: COUNTRY FARM LANE
PROJECT NO: J-4098-BB
DATE: 9-26-91

James P. Sullivan
DIRECTOR-DEPARTMENT OF PUBLIC WORKS

SCALE: 1" = 50'
SHEET 3 OF 3
PLAT NO: J-4098-BB

Copyright © 1990